

NATIONAL PARK CONCESSIONS, INC.
BIG BEND NATIONAL PARK, TEXAS 79834-9999
CHISOS MOUNTAINS LODGE

GENERAL INFORMATION

Dining Room — Coffee Shop — Open All Year
Food Service
7:00 A.M. — 7:30 P.M. (Winter)
7:00 A.M. — 8:00 P.M. (Summer)
Breakfast — A La Carte
Luncheon or Dinner — \$5.00-\$11.90
Sandwiches are served in Coffee Shop

LODGE — GIFT AND PHOTO SHOP — Quality gifts, souvenirs and a wide selection of photographic supplies, color slides and books.

STORE AND POST OFFICE — (Open 9:00 A.M. to 8:45 P.M. May 1 to October 31). (Open 9:00 A.M. to 5:30 P.M. November 1 to April 30). Groceries, beer, picnic supplies, gifts, back packing and hiking supplies. The store offers a wide selection including freeze dried foods, canned goods, bread, meats, eggs, milk and ice.

PANTHER JUNCTION

SERVICE STATION — (Open 7:30 A.M. to 7:00 P.M. May 1 to October 31). (Open 8:00 A.M. to 6:00 P.M. November 1 to April 30). Gas (No Lead and Regular). Minor Mechanical Repairs, Tires, Tubes, Oil, Accessories, Sundries, Groceries and Ice. (Wrecker Service Call 915-477-2291.)

CASTOLON — HISTORIC AREA

FRONTIER STORE — (10:00 A.M. — 6:00 P.M.) Located near Santa Elena Canyon offers picnic supplies, Mexican crafts, groceries, ice, general merchandise, gasoline (No Lead only) and oil.

RIO GRANDE VILLAGE

(9:00 A.M. to 6:00 P.M. June 1-February 28)
(9:00 A.M. to 8:00 P.M. March 1-May 31)

CAMP STORE — Coin Laundry, showers, groceries, beer, picnic supplies, photo supplies, general merchandise, sundries, ice, gas (No Lead and Regular) and oil. Propane gas will be available daily at designated hours.

TRAILER SITES — Register at Camp Store. 25 Sites, electric, water and sewer connections. Trailer sites are on the "First come — First served" basis.

Wrecker Service — Phone 915-477-2291

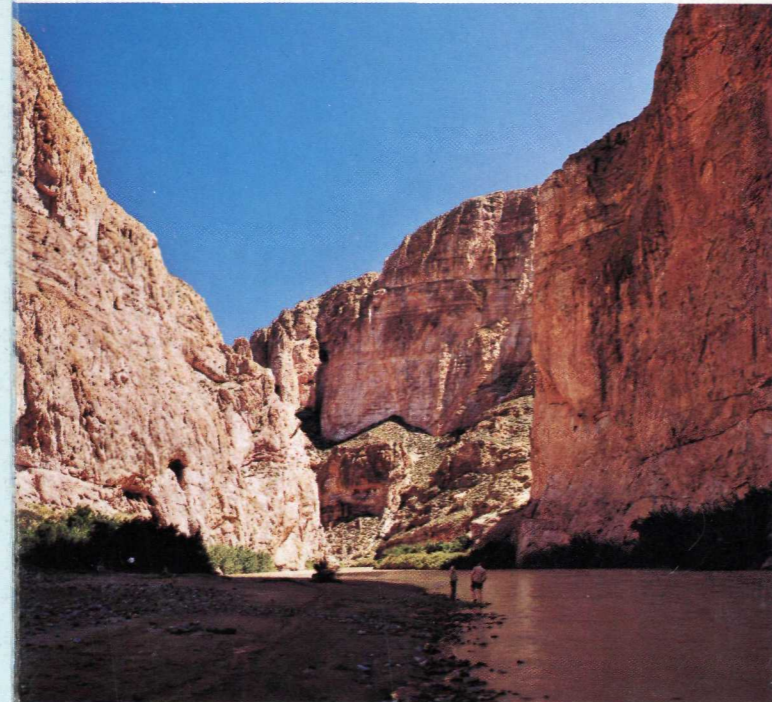
**SADDLE HORSES
IN BIG BEND NATIONAL PARK**

Chisos Remuda Phone 915-477-2374
Box 57, Big Bend National Park, Texas 79834

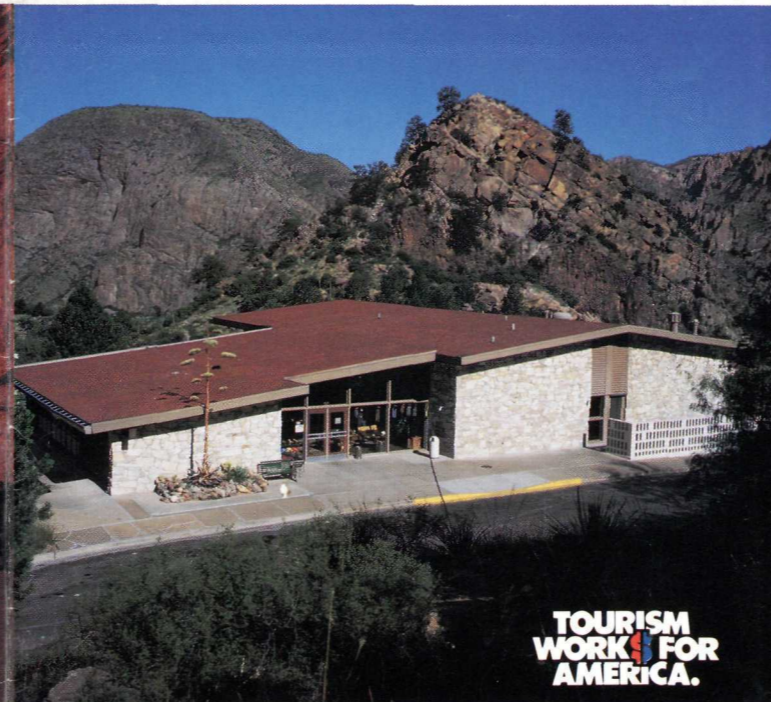
The outstanding attractions of Big Bend National Park may be enjoyed by Horseback Trips to the SOUTH RIM and THE WINDOW. Excellent Trails. Magnificent scenery and fine horses. Overnight pack trips are available.

BIG BEND NATIONAL PARK AND ACCOMMODATIONS ARE OPEN THE YEAR AROUND

Big Bend NATIONAL PARK Texas



Big Bend NATIONAL PARK Texas



**TOURISM
WORK
FOR
AMERICA.**

SAFETY NEEDS YOUR HELP!
Protect the Park and your Life
Don't Litter, Drive Friendly.

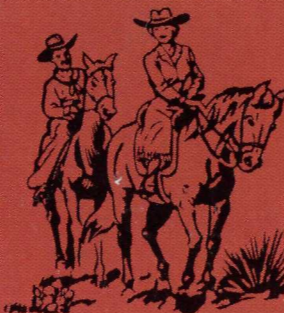
We will be pleased to provide information and arrange for your reservations at any of the following National Parks —

ISLE ROYALE NATIONAL PARK, MICHIGAN
MAMMOTH CAVE NATIONAL PARK, KY
OLYMPIC NATIONAL PARK, WASHINGTON
BLUE RIDGE PARKWAY, VA-NC



Write
NATIONAL PARK CONCESSIONS, INC.
GENERAL OFFICES
MAMMOTH CAVE, KY 42259-0027

ISSUED BY
NATIONAL PARK CONCESSIONS, INC.



**Big Bend
NATIONAL PARK**
TEXAS 79834-9999
915-477-2291
FAX 915-477-2352

RECREATION... ACTIVITIES

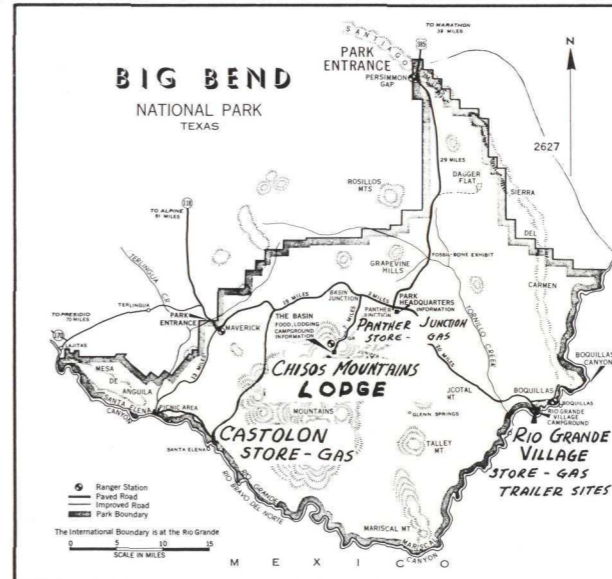
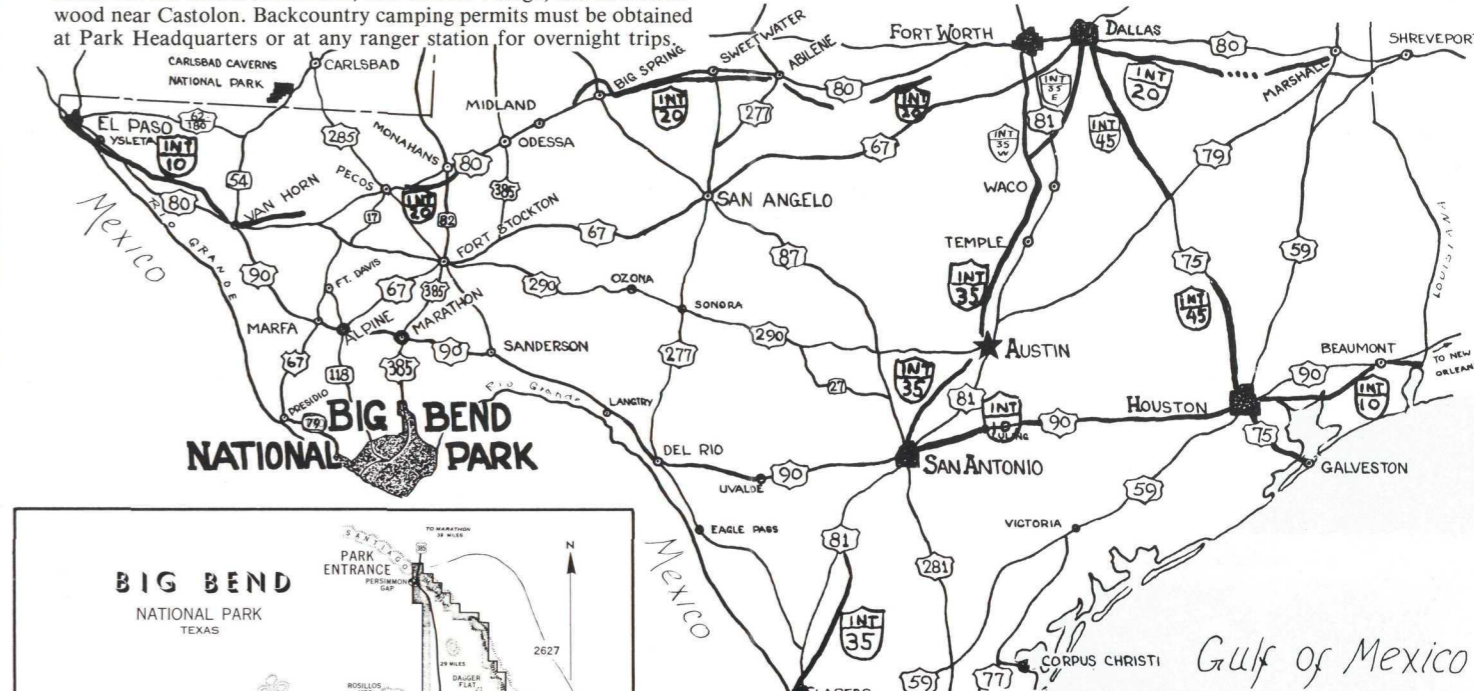
HORSEBACK RIDING — You can take short scenic trails or ride to the spectacular South Rim on an all-day guided trip. Overnight pack trips can also be arranged. Courteous, experienced guides and fine saddle horses. (Sack lunches available at the Lodge.)

HIKING — Hike the South Rim, Lost Mine or Window Trails in the high Chisos which provide mountain vistas. Tuff Canyon, Blue Creek or the Chimneys provide a first hand look at the rugged beauty of the Chihuahuan Desert. Short trails into Boquillas and Santa Elena Canyons provide close-up views of the power of the Rio Grande River. (Check with National Park Service since back-country use is limited on some trails and permits required on other than day hikes.)

NATIONAL PARK SERVICE PROGRAMS — National Park Service Programs are scheduled throughout the year, including narrated slide programs, workshops, and guided walks. Inquire locally for detailed information on park activities.

PHOTOGRAPHY — The colorful mountains, flowering desert plants, wildlife, panoramas and the intriguing Rio Grande are excellent subjects for the camera.

CAMPGROUNDS — Administered by the National Park Service are located in the Chisos Mountains, Rio Grande Village, and at Cottonwood near Castolon. Backcountry camping permits must be obtained at Park Headquarters or at any ranger station for overnight trips.



DISTANCE ... to BIG BEND NATIONAL PARK from —

	Miles
Houston	603
Dallas-Fort Worth	550
Amarillo	484
San Antonio	405
Lubbock	360
El Paso	328
San Angelo	300
Carlsbad Caverns National Park	295
Del Rio	251
Odessa	222
Van Horn	200
Monahans	178
Old Fort Davis National Historical Site	137
Fort Stockton	137
Alpine	110
Marathon	80

ELEVATIONS

Alpine	4,485 feet
Marathon	4,045 feet
Chisos Basin Area	5,400 feet
Santa Elena Canyon	2,145 feet
Rio Grande Village	1,850 feet
Panther Junction	3,750 feet

National Park Concessions, Inc., is authorized by the National Park Service, U.S. Department of the Interior, to serve the public in Big Bend National Park.

How to get to -- BIG BEND NATIONAL PARK

Big Bend National Park, located along the Big Bend of the Rio Grande, 328 miles southeast of El Paso, was established in 1944. Excellent paved roads provide access to the park from the east, north and west, over U.S. Highways 90, 385 and 67 and State Roads 118 and 170. U.S. 385 leads south through Marathon and State Road 118 leads south through Alpine to the park. U.S. 67 extends south from Marfa, connecting with State Road 170, the scenic CAMINO del RIO to Big Bend National Park.

TRAILER SITES — 25 Trailer Sites with electrical, water and sewer connections are located at Rio Grande Village Camp Store on the "first come-first served" basis.

TRANSPORTATION — American West, American, and Southwest Airlines, and rental car services at the Midland-Odessa Airport.

WHAT TO WEAR — Outdoor clothing suitable for hiking and horseback riding is desirable. There is an informal and hospitable atmosphere at the park and outdoor clothing to protect your body from the sun such as hat, sunscreen, and long sleeves are always appropriate.

Big Bend National Park, Texas



CASTOLON ↑



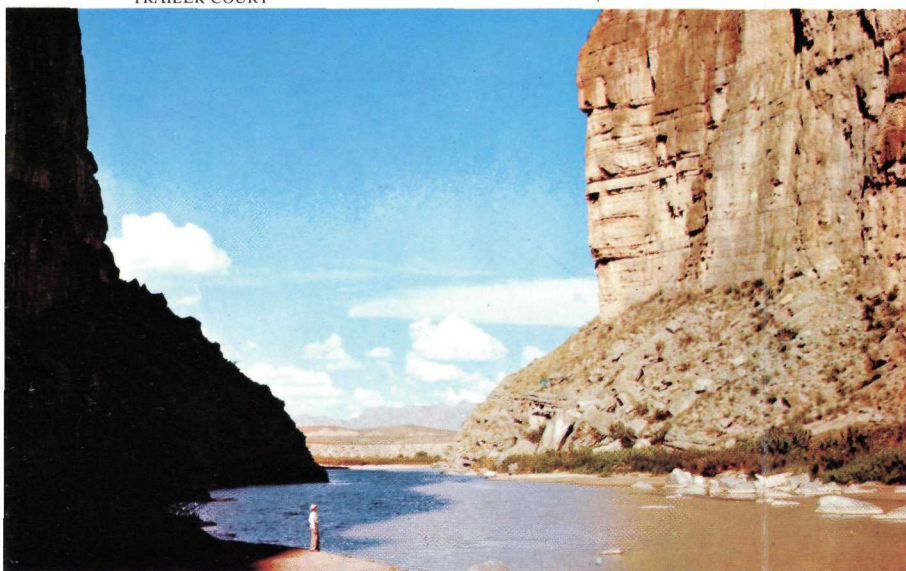
CHOLLA ↑



RIO GRANDE VILLAGE TRAILER COURT ↑



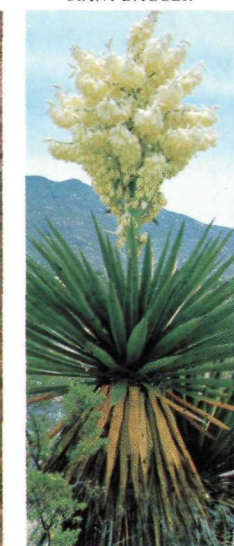
SANTA ELENA CANYON ↓ ↑ CASTOLON STORE



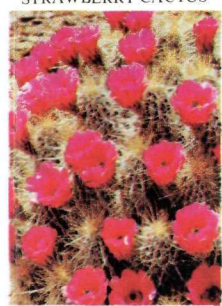
THE "WINDOW" ↓



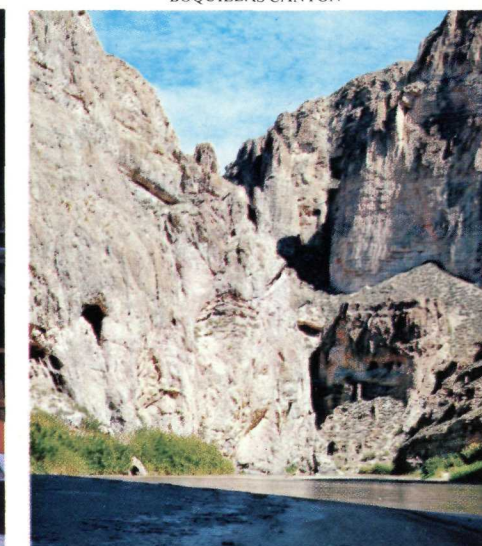
GIANT DAGGER



STRAWBERRY CACTUS



CHISOS MOUNTAINS LODGE — DINING ROOM



BOQUILLAS CANYON

BIG BEND NATIONAL PARK is located in the center of the "Big Bend Country" of west Texas and is known as the Last Frontier of Texas. From the lush vegetation in the Rio Grande flood plain to the high country of the Chisos Mountains rising from the sea of surrounding Chihuahuan Desert, the stark contrasts make this one of the most diverse national park areas.

CLIMATE — Cool summer temperatures in the Chisos Mountains contrast with mild winters making Big Bend National Park an ideal year-round place to visit.

SEEING BIG BEND — The park is accessible to all. Touring by automobile or motorcycle on the well paved roads within the park provides an opportunity to see the grandeur of the Chisos, the stark but beautiful Chihuahuan Desert, and the majestic canyons of Boquillas and Santa Elena. The atmosphere of Old Mexico is evident when viewing the village of Boquillas with the backdrop of the Sierra del Carmen and Fronteriza mountain ranges. All paved park roads have numerous interpretive signs explaining historical and natural features found in a particular area. Hiking trails vary greatly in length, difficulty and location from the four mile, self-guided Lost Mine Trail to desert hikes of many miles circum navigating the Chisos Mountains. The Window View Trail Loop is only one-quarter mile. Entrance fees are charged to enter the park.

CHISOS MOUNTAINS LODGE

Elevation 5,400 Feet
Open All Year — European Plan

The Chisos Mountains Lodge, in a magnificent scenic setting 5,400 feet above sea level. All seventy-two rooms have a delightful view of the mountains. You can enjoy our hospitality and the friendly "western atmosphere" while relaxing and sightseeing in a dry, sunny climate.

FOOD SERVICE — Chisos Mountains Lodge Dining Room and Coffee Shop both serve a variety of American, Mexican and Tex-Mex foods. Sandwiches and refreshments are served throughout the day.

GIFTS and CRAFTS — A large selection of Mexican and Indian crafts, gift items, souvenirs, post cards, books and mineral specimens.

PHOTO SUPPLIES — Films, color slides and cameras.

STORES — Four stores are located in the park. These stores are at the Chisos Mountains Lodge, Castolon, Panther Junction and Rio Grande Village. Each store sells a variety of groceries, campers supplies, picnic supplies, sundries and gifts.

SERVICE STATION — located at Panther Junction, near Park Headquarters. Gasoline, oil, accessories and minor repairs. Gas and oil at Castolon and Rio Grande Village. (Diesel fuel may be purchased in Alpine, Marathon and Study Butte.)

POST OFFICE — Big Bend National Park, Texas 79834. Mail delivery 5 times weekly — Monday through Friday.

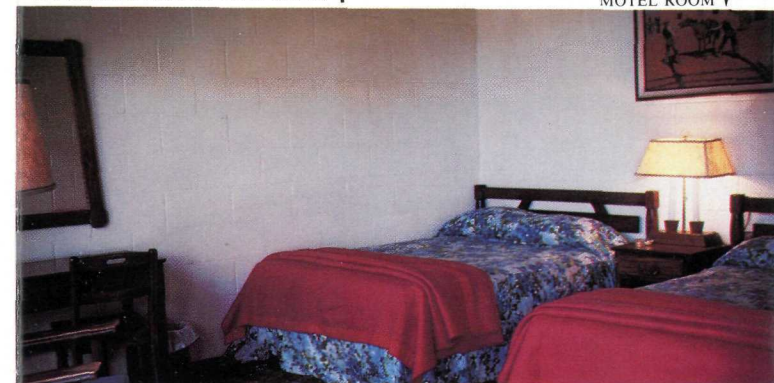
WESTERN UNION TELEGRAPH SERVICE — Telegrams and Money Orders. (incoming traffic only)

RESERVATIONS and INFORMATION — Write, call or wire —

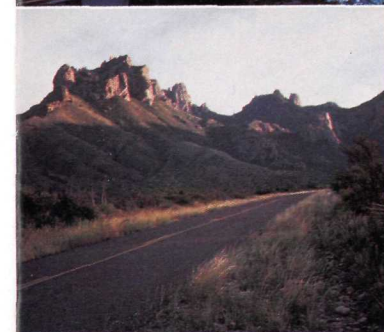
NATIONAL PARK CONCESSIONS, INC.
BIG BEND NATIONAL PARK, TEXAS 79834-9999
Phone 915-477-2291
FAX 915-477-2352



RIO GRANDE VILLAGE CAMP STORE ↑



MOTEL ROOM ↓

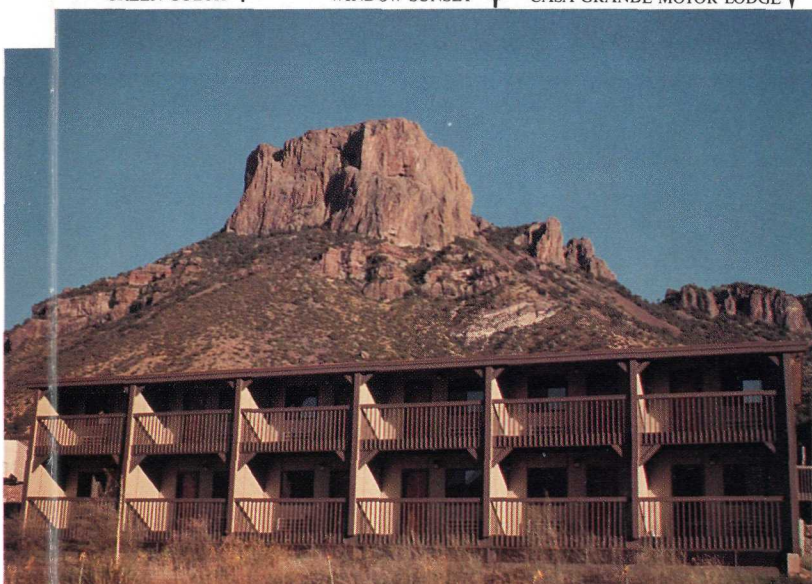


GREEN GULCH ↑



WINDOW SUNSET ↑

CASA GRANDE MOTOR LODGE ↓



NATIONAL PARK CONCESSIONS, INC.
CHISOS MOUNTAINS LODGE
BIG BEND NATIONAL PARK, TEXAS 79834-9999
Phone 915-477-2291
FAX 915-477-2352

OPEN ALL YEAR
RESERVATIONS
ADVISABLE

(Reservation Office Hours
7 a.m.-9 p.m.)



Rate Schedule

CASA GRANDE MOTOR LODGE — Each room has two beds, tile bath, tub and shower, wall-to-wall carpet and thermostat controlled air conditioning and heating. Some rooms are equipped with handicapped facilities and some non-smoking rooms are available.

- One Person\$53.00
- Two Persons 60.00
- Each Additional Person 7.00

MOTEL — Motel type unit. Each room has two double beds, tile bath, tub and shower, wall-to-wall carpet and room controlled air conditioning and heating.

- One Person\$51.00
- Two Persons 58.00
- Each Additional Person 7.00

LODGE-UNIT — One Room, one double bed, one single bed, wall-to-wall carpet, tile bath, tub and shower combination, electric heat.

- One Person\$45.00
- Two Persons 53.00
- Each Additional Person 7.00

STONE COTTAGES — One Room, private shower bath, closet, three double beds.

- Three Persons\$62.00
- Each Additional Person 7.00

A deposit equal to one night's lodging should accompany your room request in order to confirm your reservations. Deposits will be refunded if cancellation is received 48 hours prior to scheduled arrival. **Make check payable to: NATIONAL PARK CONCESSIONS, INC.** Check-in time is 4:00 p.m. Check-out time for room guests is 12:30 P.M.

TO THE RESERVATION DEPARTMENT:

Please reserve the accommodations checked for the period arriving _____ 19____, departing _____ 19____. There will be _____ persons in my party. We will need _____ beds.

Amount of deposit enclosed \$ _____
(The amount of one night's lodging plus 6% room tax is necessary to confirm your reservation.)

NAME _____
ADDRESS _____
CITY _____
STATE _____ ZIP CODE _____
PHONE _____
(Please Print)

CREDIT CARDS HONORED: Diners, VISA, American Express, MasterCard and Carte Blanche.
(Rates are subject to change with the prior approval of the National Park Service, Department of the Interior.)

DETACH AND USE FOR RESERVATION REQUEST