

Big Bend

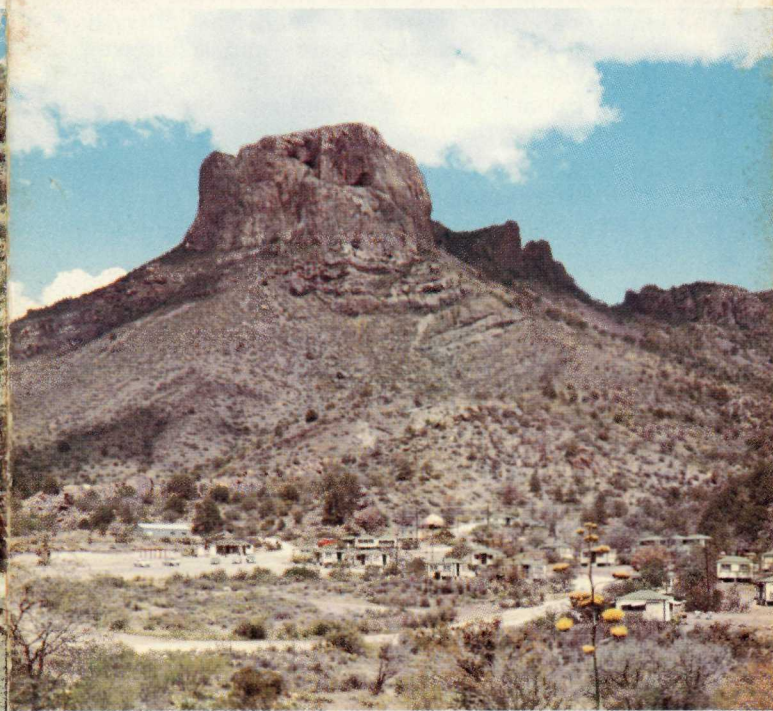
NATIONAL PARK

Texas

Big Bend

NATIONAL PARK

Texas



Be A National Park Traveler!

We will be pleased to provide information and arrange for your reservations at any of the following National Parks —

- ISLE ROYALE NATIONAL PARK, MICHIGAN
- MAMMOTH CAVE NATIONAL PARK, KY.
- OLYMPIC NATIONAL PARK, WASHINGTON
- BLUE RIDGE PARKWAY, VA.-N. C.

Write

NATIONAL PARK CONCESSIONS, INC.

Public Relations Department
MAMMOTH CAVE, KENTUCKY

ISSUED BY
NATIONAL PARK CONCESSIONS, INC.



Big Bend

NATIONAL PARK

TEXAS

RECREATION . . . ACTIVITIES

TRAIL RIDING—Saddle Horses are available for trail riding. There are short scenic trails or all-day guided trips to suit the choice of the visitor.

HIKING—Several miles of trails lead to the Lost Mine Ridge, the "Window," and to the South Rim, revealing impressive vistas of the foothills, plains and distant mountain ranges.

CAMPFIRE PROGRAMS—Ranger talks are given nightly, except Sunday, throughout the year when visitation demands. Outside during summer and inside during cold weather.

PHOTOGRAPHY—The colorful mountains, flowering desert plants, wildlife, magnificent panoramas and the intriguing Rio Grande provide excellent subjects for the camera.

How to get to --

BIG BEND NATIONAL PARK

Big Bend National Park, established in 1944, is located along the Big Bend of the Rio Grande, 328 miles southeast of El Paso. The two paved approach roads to the Park are U. S. Highway 385, which intersects U. S. Highway 90 at Marathon and State Road 118, which intersects U. S. Highway 90 at Alpine. A paved road in the Park connects these State Roads, forming a "Loop" through Big Bend National Park from east and west.

TRANSPORTATION—Southern Pacific Sunset Route transcontinental trains stop at Alpine and Marathon.

WHAT TO WEAR—Outdoor clothing suitable for hiking and horseback riding is desirable. Living conditions are informal and the visitor is always comfortable in outdoor and sports clothing.



DISTANCE . . . to BIG BEND NATIONAL PARK from—

| | MILES | ELEVATIONS | |
|--------------------------------|-------|--------------------|------------|
| San Antonio | 405 | Alpine | 4,485 feet |
| White Sands National Monument | 406 | Marathon | 4,045 " |
| Carlsbad Caverns National Park | 317 | Chisos Mtn. Area | 5,400 " |
| El Paso | 328 | Santa Elena Canyon | 2,145 " |
| San Angelo | 314 | Boquillas | 1,850 " |
| McDonald Observatory | 157 | | |
| Alpine | 110 | | |
| Marathon | 80 | | |

Big Bend National Park, Texas

BIG BEND NATIONAL PARK, located along the Rio Grande in southwestern Texas, is an area of dramatic contrasts. You will experience new travel adventures when you drive into the mile-high Chisos Mountains or join a horseback party for an exciting ride to the lofty plateau of the South Rim, 7,200 feet in elevation. The imposing canyons, colorful arroyos, flowering desert and the expansive plains offer unlimited sightseeing opportunities and excellent subjects for your camera. There is an atmosphere of the old frontier along the Rio Grande, where the Sierra del Carmen and Fronteriza ranges of Mexico dominate the landscape to the south. From your cottage, more

than a mile above sea level, you can enjoy superb mountain vistas in the invigorating air. Big Bend, land of legend and range rider, has been called the "Last Frontier." You will be captivated by the charm and western flavor, where the strange phenomena of mountains, desert and plains merge to form picturesque and dramatic landscapes.

SIGHTSEEING—Touring Big Bend by automobile provides access to much of the National Park. Roads lead to the Rio Grande, where the desert terrain and mountain ranges of Old Mexico lend an atmosphere of drama and stark, rugged beauty. The Santa Elena Canyon and Boquillas areas provide splendid all-day outings from the Chisos Mountains.

CHISOS MOUNTAINS COTTAGES

Elevation 5,400 Feet

Open All Year — European Plan

The Chisos Mountains Cottages, in a magnificent scenic setting, 5,400 feet above sea level, provide accommodations for more than 100 guests. Eight new lodge rooms, each with tile bath, and several stone cottages, offer delightful views of the mountains. All cottages and lodge rooms have private bath and electric heat. The frame cottages, designed for comfort at minimum rates, are adjacent to a central building with rest rooms and showers. All cottages and other facilities are equipped with electric lights. You can enjoy our hospitality and the friendly "western atmosphere" while relaxing and sightseeing in a dry, sunny climate. Excellent food service in the Dining Room. Sandwiches and refreshments are served throughout the day.

CURIOS and SOUVENIRS — A variety of Mexican crafts, gift items, souvenirs, post cards and books.

PHOTO SUPPLIES — Films, color slides and cameras.

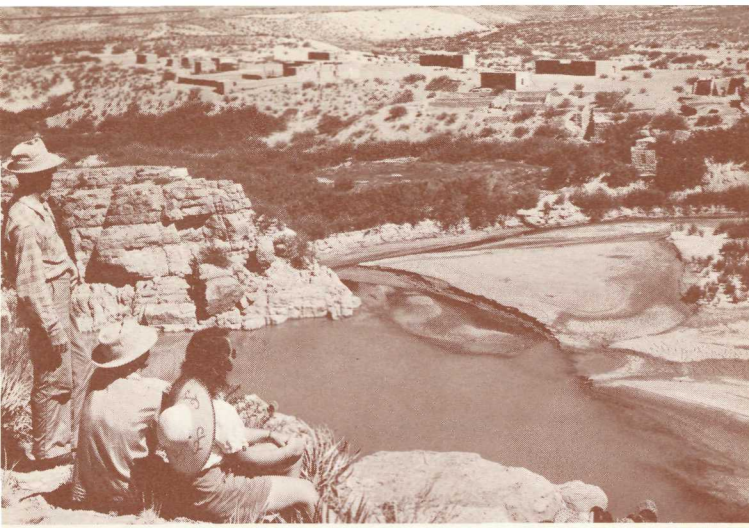
STORES — (In Chisos Mountains and at Castolon, in Santa Elena Canyon area) Candy, cigarettes, cold drinks and a limited stock of staple groceries and campers' supplies.

SERVICE STATIONS — Gasoline stations are located in the Chisos Mountains and at Panther Junctions, near Park Headquarters. Gasoline, oil, accessories and minor repairs. Gas and oil at Castolon.

POST OFFICE — Big Bend National Park, Texas. Mail delivery 5 times weekly — Monday through Friday.

WESTERN UNION TELEGRAPH SERVICE — Wires and Money Orders.

RESERVATIONS and INFORMATION — Write, call or wire—
NATIONAL PARK CONCESSIONS, INC.
BIG BEND NATIONAL PARK, TEXAS
Phone GR 7-2291



BOQUILLAS, MEXICO FROM BIG BEND

SANTA ELENA CANYON



SOUTH RIM OF THE CHISOS MOUNTAINS

ROAD APPROACHING THE CHISOS MOUNTAINS



NEW LODGE UNIT



STONE COTTAGE IN CHISOS MOUNTAINS. 5,400 FT. ELEVATION

TRAIL RIDERS — SOUTH RIM TRAIL

