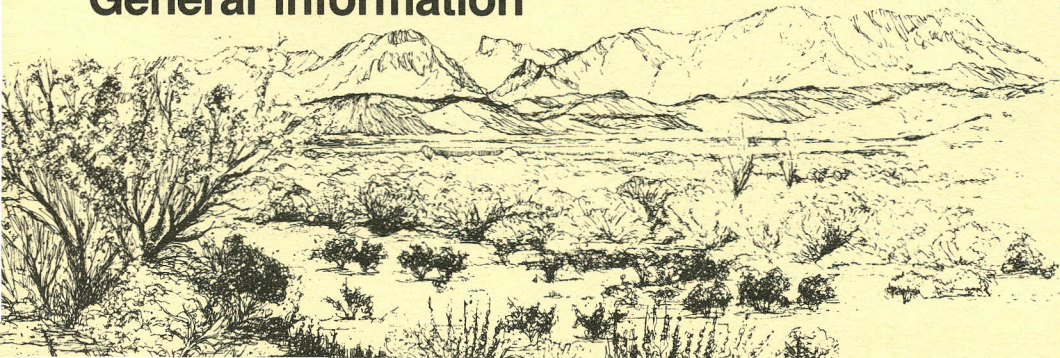
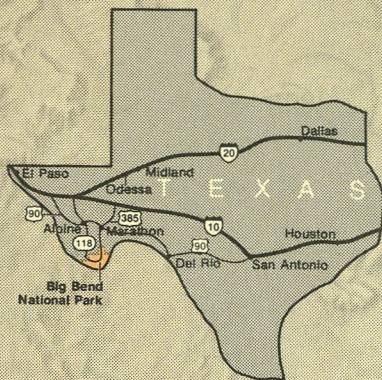


BIG BEND

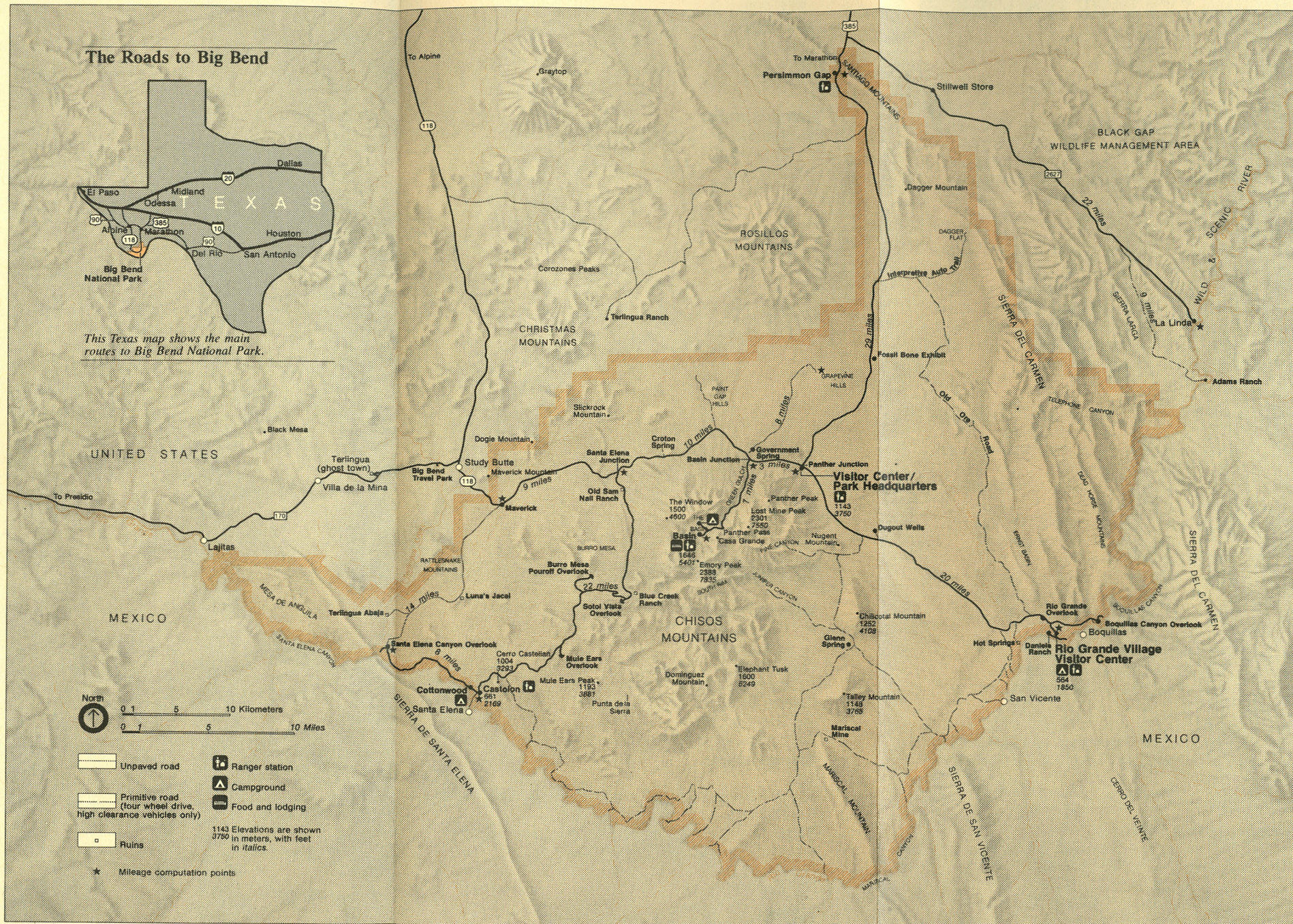
General Information



The Roads to Big Bend



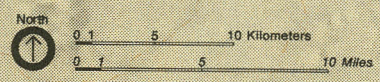
This Texas map shows the main routes to Big Bend National Park.



UNITED STATES

MEXICO

MEXICO



- Unpaved road
 - Primitive road (four wheel drive, high clearance vehicles only)
 - Ruins
 - Ranger station
 - Campground
 - Food and lodging
- 1143 Elevations are shown in meters, with feet in italics.
- ★ Mileage computation points

GENERAL INFORMATION

Fees: No entrance fees. Campground fees applicable. See *Camping*.

Services: Lodging, meals, and service stations are provided by National Park Concessions, Inc. Gas and groceries are available near all campgrounds. (No gas in the Chisos Basin.) Showers and laundry facilities are available only at the grocery store/service station at Rio Grande Village between 9:00 AM and 5:00 PM, with extended hours during Spring Break. Prepared food and lodging are available only in the Chisos Basin. Call (915) 477-2291 for room reservations. *Advance reservations recommended!*

Tours: Guided horseback trips are provided by the Chisos Remuda. Advance reservations required. (915) 477-2374.

Naturalist Programs: Nature walks, workshops, and evening slide programs are provided by park naturalists. Check bulletin boards and visitor centers for current schedule.

Roads: Three paved roads lead to the park: 1) U.S. 385 from Marathon, TX, to north entrance; 2) State 118 from Alpine, TX, to west entrance; 3) Marfa to Presidio on U.S. 67, Presidio to Study Butte on Ranch Road 170, then State 118 to west entrance. Note: Highways 67, 118, and 385 all turn south off U.S. 90.

All principal roads in the park are paved. Use caution if water is present at low-water crossings following thunderstorms. The water usually recedes rapidly. Improved dirt roads are usually in good condition and accessible to normal passenger cars except following rainstorms. Unimproved backcountry roads generally require high-clearance vehicles and/or four wheel drive. Check current road conditions, posted daily, at a ranger station before traveling any of the park's dirt roads.

Transportation: No public transportation is available to or within the park. Bus and rail connections are available to Alpine, TX. Nearest commercial airport is Midland/Odessa, TX, 250 miles northeast. Transportation is available from Alpine to Study Butte and Lajitas, but not into the park. Call (915) 424-3471 for schedule, fees, and information.

Recreational vehicles: Steep grades and sharp curves to the Basin and north out of Castolon. Not advised for automobiles towing trailers over 20 feet in length or RVs over 24 feet in length.

Utility hookups: Available only at Rio Grande Village store/service station. First come/first serve only.

Swimming: Swimming in the Rio Grande is neither prohibited nor encouraged. However, it can be dangerous due to strong undercurrents, step-offs, and quicksand.

Fishing: Fishing is allowed in the Rio Grande. No license is required. Catfish are commonly taken.

Hunting: NO HUNTING ALLOWED.

Wildlife: Seventy-five species of mammals, over 400 species of birds and 65 species of reptiles and amphibians have been recorded in the park.

WEATHER

Month	Average	Average	Precipitation	
	Max.	Min.	Average	Ytd Total
	(°F)	(°F)	(inches)	
January	60.9	35.0	.46	.46
February	66.2	37.8	.34	.80
March	74.4	45.3	.31	1.11
April	80.7	52.3	.70	1.81
May	88.0	59.3	1.50	3.31
June	94.2	65.5	1.93	5.24
July	92.9	68.3	2.09	7.33
August	91.1	66.4	2.35	9.68
September	86.4	61.9	2.12	11.80
October	78.8	52.7	2.27	14.07
November	68.5	42.3	.70	14.77
December	62.2	36.4	.57	15.34

The above statistics are from Park Headquarters, elev. 3,750 ft., for the ten-year period ending December, 1983. Temperatures in the higher mountain areas vary about 5-10 degrees below those shown, while temperatures along the Rio Grande run from 5-10 degrees higher. Sunshine is abundant the year round. Infrequent and brief periods of cloudy weather are confined mostly to the winter months. Snow falls very rarely and is generally light, lasting only a short time. Relative humidity is usually quite low. The "rainy season" extends from mid-June through October, during which there can be locally heavy thunderstorms and some flash-flooding. The water recedes rapidly, however, and the rainy season is a delightful time to visit the desert.

Because national parks were established to protect the land and to leave all within their boundaries unimpaired for the enjoyment of future generations, the collecting or disturbing of rocks, cactus and other plants, animals, or historic or prehistoric artifacts is prohibited. In addition, no off-road vehicular travel is permitted.

HIKING

Hiking is the best way to experience, enjoy, and appreciate Big Bend National Park. Keep in mind, however, that Big Bend is still wild and you should be prepared for the unexpected. Because of the unreliability of desert springs, it is virtually impossible to plan an extended backpacking trip prior to your arrival in the park. The best idea is to have in mind how much distance you want to cover and how much time you have. Based on that information and current spring conditions, personnel at park headquarters can assist you in planning a trip tailored to your needs and abilities. You can begin to familiarize yourself with what Big Bend has to offer by obtaining a *Hiker's Guide* and a topo map of the park. These aids can help you to get a rough idea of hikes and distances. Be open-minded, though, in case your original plans prove unfeasible.

DOs and DON'Ts

The following list is intended to make your visit, and that of those near you, more pleasant.

DO

- Carry water with you on hikes — at least 1 gallon/person/day.
- Treat spring water before use.
- Wear good-fitting clothing, good hiking boots, and a hat.
- Acquire a permit for backcountry overnight hiking.
- Camp at least 200 yards from any historical structure or water supply, 500 yards from any tinaja on the Mesa de Anguila, and 200 feet from any trail or cliff edge.
- Stay on the hiking trails.
- PACK OUT WHAT YOU PACK IN.

DON'T

- Rely on backcountry springs.
- Camp in dry washes, arroyos, and below the high-water mark of the river.
- Build wood or ground fires. They are strictly prohibited.
- Climb unstable rock. Most rock faces in the park are very fragile.
- Molest, harm, or kill snakes or other wildlife. All are protected.
- Cut across switchbacks.
- Take your pet into the backcountry with you.

CAMPING

All campgrounds accommodate people on a first come/first serve basis only. Campsite occupancy is limited to eight people or two vehicles or one RV. Advance reservations for groups (scouts, schools, etc.) may be made by writing the Superintendent, Big Bend NP, TX 79834. Group campground reservations may be made up to 90 days in advance.

Campgrounds:

Chisos Basin — Comfort stations, charcoal grills, tables, water, and some overhead shelters. No hookups. Dump station and water hose. Elevation 5,400 ft. 14 day limit. 63 sites. Fee: \$4.00/site/night.

Rio Grande Village — Comfort stations, charcoal grills, tables, water, and some overhead shelters. No hookups. Dump station and water hose. Elevation 1,850 ft. 14 day limit. 100 sites. Fee: \$4.00/site/night.

Also at Rio Grande Village there is a Class B campground, used only when the Class A facility, above, is full. Drinking water and pit toilets are available, but there are no picnic tables or grills. If you plan to visit Big Bend during a busy holiday period (primarily Easter/Spring Break, Thanksgiving, or Christmas), you might come prepared to camp in this facility or at one of the backcountry roadside campsites. Bring a portable table, folding chairs, water containers, and a portable grill or stove.

NOTE: Hookups are available at the concession-operated trailer park at the grocery store/service station. Full hookup capability is required.

Cottonwood — Charcoal grills, tables, water, and pit toilets. No hookups. Elevation 1,900 ft. 14 day limit. 35 sites. Fee: \$2.00/site/night.

Primitive Campgrounds:

Numerous backcountry roadside campsites are located throughout the park. No services or facilities are available at these primitive campsites. A backcountry camping permit is required and can be obtained free at any ranger station.

CAMPING LIMITATION

A parkwide limit of 14 days occupancy is in effect February 1 to April 15 for any developed campsite including the concession-operated trailer sites at Rio Grande Village. During the rest of the year, a limit of 14 days occupancy is in effect per campground visit. Occupancy beyond 14 days may be authorized by campground managing personnel on a day-to-day basis if sites are available for new arrivals.

CAMPGROUND STATUS

During holiday periods, particularly Easter (spring break), Thanksgiving, and Christmas, the main campgrounds are likely to be full. However, there is generally adequate space for properly equipped campers in primitive areas. If you plan to visit Big Bend during any of the above time periods, come prepared with a portable table, folding chairs, water containers, and a portable grill. In addition to primitive areas within the park, there are several private camping facilities adjacent to the park. They are listed below "Facilities and Services Outside the Park." For additional information call the park at (915) 477-2251.

DOs and DON'Ts

DO

- Camp only at designated campsites.
- Keep your pets on a leash and under physical control at all times.
- Observe quiet hours: Basin — 10:00 PM to 6:00 AM.
Rio Grande Village — 10:00 PM to 8:00 AM.
Muffled RV generators may be used after 8:00 AM.
- Dispose of sink water in camper sinks only — not on the ground!
- Have fun — and enjoy yourself!

DON'T

- Build wood or ground fires.
- Leave stoves or charcoal fires unattended.
- Drain sewage or sink waste water on the ground.
- Leave property unattended in the park in excess of 24 hours.
- Use firearms or metal detectors. Both are strictly prohibited.

PETS

Pets are not permitted on any of the trails, in any public buildings, on the Rio Grande or anywhere in the backcountry. There are no kennels in or near the park and pets may not be left unattended in the campground or in vehicles. Consider your plans very carefully before planning to bring your pet with you.

RIVER INFORMATION

The Rio Grande forms the southern boundary of Big Bend National Park as well as the international boundary between the U.S. and Mexico. The river borders the park for 118 miles. In this distance it has carved three major canyons which vary in depth from 1,200 feet to 1,500 feet. Pursuant to a 1978 act designating the Rio Grande Wild and Scenic River, an additional 127 miles of river downstream from the park is managed for recreation and preservation by the National Park Service. Like the three canyons of Big Bend, the "Lower Canyons" are steep and sheer-walled. Their rims cannot be easily reached by climbing out. In certain locations there is considerable white water which can be very dangerous to the novice. Between the canyons, the Rio Grande is generally slow and quiet.

The river distance from Lajitas to La Linda is approximately 127 miles and requires six or more days to travel. A similar distance and travel time are involved in continuing from La Linda to the terminus of the Wild and Scenic River near Langtry. The Park Service maintains a "clearinghouse" for Lower Canyons use to insure that groups do not "bunch up" on the Lower Canyons and spoil the wilderness quality of the trip. Call (915) 477-2393 for Lower Canyons information.

For river trips in Big Bend National Park or on the Wild and Scenic River, a free permit, obtainable at any ranger station, is required. Three options are available to those desiring to take a river trip: 1) You can bring your own equipment; 2) You can rent equipment at Lajitas or Study Butte; or 3) You can hire a guide service that will provide all permits, food, equipment, and shuttles.

Please request specific river regulations and information prior to making final plans for your trip.

Average River Level

Month	(meters/feet)
January	.81/2.67
February	.81/2.67
March	.89/2.94
April	.90/2.97
May	1.02/3.37
June	.97/3.20
July	1.04/3.43
August	1.30/4.29
September	1.39/4.59
October	1.35/4.46
November	.98/3.23
December	.83/2.74

FACILITIES & SERVICES OUTSIDE THE PARK

(Mileages are from Panther Junction.)

Where To Stay

- Chisos Mining Company — Study Butte, 26 miles west on TX 118 371-2254
Badlands Hotel/Cavalry Post — Lajitas, 40 miles west on TX 170 424-3471 or 424-3451
Terlingua Lodge — Terlingua Ranch, 26 miles west on TX 118, then 18 miles north on TX 118, then 18 miles east on marked gravel road. 371-2416

Where To Eat

- Poncho's Pizza and Mexican Food — Study Butte, 27 miles west on TX 118.
Uncle Joe's — Study Butte, 27 miles west on TX 118.
Badlands Hotel — Lajitas, 40 miles west on TX 170.
Terlingua Lodge — Terlingua Ranch, 26 miles west on TX 118, then 18 miles north on TX 118, then 18 miles east on marked gravel road.

Camping

- Big Bend Travel Park — Study Butte, 28 miles west on TX 170. 371-2250. Tents and RVs.
Lajitas on the Rio Grande — Lajitas, 40 miles west on TX 170. 424-3471. RVs only.
Stillwell's Trailer Camp — 30 miles north on NPS entrance road to U.S. 385, then 6 miles east on TX 2627. 376-2244. RVs only.
Cattle Country Camper — 45 miles north on U.S. 385. 376-2241. Tents and RVs.
Terlingua Ranch — 26 miles west on TX 118, then 18 miles north on TX 118, then 18 miles east on marked gravel road. 371-2416. Tents and RVs.

Service Stations & Grocery Stores

- Study Butte Store and Station, Phillips 66.
Diesel fuel and propane available. 26 miles west on TX 118. 371-2231.
Stillwell Store and Gas Station, Fina.
30 miles north on NPS entrance road to U.S. 385, then 6 miles east on TX 2627. 376-2244.
Poncho's, Exxon
27 miles west on TX 118.

Rio Grande Float Trips

- Far Flung Adventures — Terlingua Ghost Town.
30 miles west on TX 170. 371-2489.
Outback Expeditions — Study Butte.
26 miles west on TX 118. 371-2490.
Big Bend River Tours — Lajitas.
40 miles west on TX 170. 424-3219.
Rough Run Outfitters — Marathon, TX.
68 miles north on U.S. 385. 386-4544.
Also in Boquillas, Mexico.

Equipment (Sales or rentals)

- Study Butte Store — 26 miles west on TX 118.
371-2231.
Desert Sports — Terlingua Ghost Town, 30 miles west on TX 170. 371-2489.
Lajitas Trading Post — Lajitas, 40 miles west on TX 170. 424-3234.

Terlingua Medics

- First Aid Station, Study Butte, 27 miles west on TX 170. 371-2222.

Telephone numbers: (all area codes are 915)

- Big Bend National Park
Headquarters 477-2251
Chisos Mountains Lodge
Overnight accommodations 477-2291
Chisos Remuda Horseback rides 477-2374
Rio Grande Village Store
RV sites (First come/first serve only) 477-2293

Emergencies:

- Day 477-2251
Night Numbers posted at all bulletin boards, Visitor Centers and pay telephones
(Note: When calling within the park, dial **only** the last four digits of the telephone number.)



Published by
Big Bend
Natural History Association
in cooperation with the
National Park Service