



Camas Monitoring at Big Hole National Battlefield

2011 Annual Report

Natural Resource Technical Report NPS/UCBN/NRTR—2013/755



Andrea Foust Carlson © 2005

ON THE COVER

Illustration of *Camassia quamash* (Pursh) Greene.

Reproduced with permission from Andrea Foust Carlson.

Camas Monitoring in Big Hole National Battlefield

2011 Annual Report

Natural Resource Technical Report NPS/UCBN/NRTR—2013/755

Thomas J. Rodhouse

National Park Service
63095 Deschutes Market Road
Bend, Oregon 97701

June 2013

U.S. Department of the Interior
National Park Service
Natural Resource Stewardship and Science
Fort Collins, Colorado

The National Park Service, Natural Resource Stewardship and Science office in Fort Collins, Colorado, publishes a range of reports that address natural resource topics. These reports are of interest and applicability to a broad audience in the National Park Service and others in natural resource management, including scientists, conservation and environmental constituencies, and the public.

The Natural Resource Technical Report Series is used to disseminate results of scientific studies in the physical, biological, and social sciences for both the advancement of science and the achievement of the National Park Service mission. The series provides contributors with a forum for displaying comprehensive data that are often deleted from journals because of page limitations.

All manuscripts in the series receive the appropriate level of peer review to ensure that the information is scientifically credible, technically accurate, appropriately written for the intended audience, and designed and published in a professional manner.

Data in this report were collected and analyzed using methods based on established peer-reviewed protocols and were analyzed and interpreted within guidelines of the protocols.

Views, statements, findings, conclusions, recommendations, and data in this report do not necessarily reflect views and policies of the National Park Service, U.S. Department of the Interior. Mention of trade names or commercial products does not constitute endorsement or recommendation for use by the U.S. Government.

This report is available from the Upper Columbia Basin Network website (<http://science.nature.nps.gov/im/units/ucbn/index.cfm>) and the Natural Resource Publications Management website (<http://www.nature.nps.gov/publications/nrpm/>).

Please cite this publication as:

Rodhouse, T. J. 2013. Camas monitoring in Big Hole National Battlefield: 2011 Annual Report. Natural Resource Technical Report NPS/UCBN/NRTR—2013/XXX. National Park Service, Fort Collins, Colorado.

Contents

	Page
Figures.....	iv
Tables	iv
Abstract	v
Acknowledgments.....	vi
Introduction.....	1
Methods.....	4
Results.....	7
Discussion.....	12
Literature Cited	13

Figures

	Page
Figure 1. The sampling frame along the Big Hole River floodplain in BIHO, with 2011 quadrat locations (black points) and predicted patterns of camas density based on a kriging interpolation from 2011 established camas plant counts.....	6
Figure 2. A “conformance” chart that plots annual established camas plant densities and 90% confidence intervals relative to control limits that are $\pm 25\%$ of the 2007-2008 baseline average density.	8
Figure 3. A “conformance” chart that plots annual flowering camas plant densities and 90% confidence intervals relative to control limits that are $\pm 25\%$ of the 2007-2008 baseline average density.	9
Figure 4. Annual and 10-year running means for precipitation recorded at the Wisdom, Montana NOAA co-op weather station (#249067, http://www.wrcc.dri.edu/), located 250 feet below and 10 miles east of the Battlefield.....	10
Figure 5. Annual and 10-year running means for temperature recorded at the Wisdom, Montana NOAA co-op weather station (#249067, http://www.wrcc.dri.edu/), located 250 feet below and 10 miles east of the Battlefield.....	11

Tables

	Page
Table 1. Estimated means and 90% confidence intervals for established camas plant density and flowering plant density.	7

Abstract

As part of the Upper Columbia Basin Network's effort to conduct vital signs monitoring, we completed monitoring of camas (*Camassia quamash*) in 2011 in Big Hole National Battlefield (BIHO). This is the sixth year of camas monitoring in BIHO. Camas is a unique resource for BIHO because it is both culturally and ecologically significant. Camas was and remains one of the most widely utilized indigenous foods in the Pacific Northwest and it is strongly associated with the wet prairie ecosystems of the region that have been degraded or lost due to historic land use practices. A long-term monitoring program for detecting status and trends in camas populations at BIHO serves as a central information source for park adaptive management decision making and will provide essential feedback on any eventual restoration efforts of park wet prairie habitats.

This annual report details findings from 2011, and puts these findings within the context of the entire 6-year monitoring program. Trend analysis for the BIHO camas population over the period 2006-2010 was provided by Rodhouse et al. (2011), who reported an overall estimate of 3% per year increase, on average, in the median number of established camas plants/ m², excluding seedlings, but with a relatively wide 95% credible interval of -0.02 – 0.07, indicating uncertainty in both the direction and magnitude of the trend. Another detailed camas monitoring trend report will be provided for BIHO following the 2012 season. Based on the 2011 survey, overall trends in camas density now appear to be more clearly stable or slightly increasing in BIHO. In 2011, based on counts of camas in one-hundred-fifty-four 0.6 m² quadrats, mean density of established camas plants/m² was estimated to be 6.8 (90% confidence interval 4.8-9.0). This was the highest estimate over the 6-year study period. Estimated mean density of flowering camas plants/m² was 1.5 (90% confidence interval 1.1-2.0), up from 2010 but down slightly from earlier estimates. Flowering plant density is more variable than overall established plant density. Historical camas densities in some high-quality Pacific Northwest sites available from anthropological sources were estimated to be 100 plants/m² or more. These would have been highly-prized by indigenous peoples as camas bulb digging grounds. It is not clear whether these exceptional historical conditions apply to the BIHO population, which was more of a pass-through area for Nez Perce hunters (J. Lyon, personal communication), but it does provide some context for interpreting the current findings. No invasive weeds were encountered in plots in 2011, although Canada thistle (*Cirsium arvense*) was noted by some of the field crew while walking between plots.

Acknowledgments

This project is made possible by the strong support of both Big Hole National Battlefield and Nez Perce National Historical Park staff. Each year since 2006, staff from these parks has joined the Upper Columbia Basin Network I&M staff to survey for camas. This teamwork allows for camas surveys to be conducted very efficiently in just 2 days.

Introduction

Camas (*Camassia quamash* [Pursh] Greene) is a perennial bulb-producing lily (Family Liliaceae; alternatively Agavaceae, APG 2003) that was and remains one of the most widely utilized plant foods of the Nez Perce people (Harbinger 1964, Hunn 1981, Turner and Kuhnlein 1983, Thoms 1989, Mastrogiuseppe 2000). Camas was also a focal resource at many of the significant historical events memorialized by Big Hole National Battlefield (BIHO) and Nez Perce National Historical Park (NEPE). It was during the camas harvest at Weippe Prairie, a subunit of NEPE, that the Lewis and Clark Corps of Discovery first encountered the Nez Perce. The battle at Big Hole occurred at a traditional Nez Perce camas harvesting campsite. It is also noteworthy that the botanical “type” specimen for the *Camassia* genus as well as for *C. quamash* itself was collected by the Lewis and Clark expedition returning through the Weippe Prairie during the spring of 1806 (Meehan 1898, Gould 1942).

Camas is considered a facultative wetland species (Reed 1988) that is strongly associated with the seasonal wet prairie ecosystems of the interior Columbia Plateau and northern Rocky Mountains which are represented at the Weippe Prairie and along the North Fork of the Big Hole River, where BIHO is located. Large expanses of camas in bloom were noted by numerous explorers and botanists that entered the Pacific Northwest in the 19th century, including the Lewis and Clark expedition, and which were frequently described as “blue lakes” when viewed from a distance (Havard 1895, Leiberg 1897, Murphey 1987, Thoms 1989). The extent of the wet prairie ecosystem type has been drastically reduced throughout the Pacific Northwest as a result of agricultural conversion, irrigation and flood control development, and other land use practices (Thoms 1989, Dahl 1990, Taft and Haig 2003). Remaining wet prairies in the region are often structurally altered and compromised by non-native and woody native invasive species. The NPS-owned portions of Weippe Prairie and the Big Hole valley are no exception. Both sites have historic agricultural developments that have altered site hydrology, are impacted by invasive weeds, and Weippe Prairie has also been used for intensive haying and grazing. Orange hawkweed (*Hieracium aurantiacum*) and sulfur cinquefoil (*Potentilla recta*), invasive plants in Idaho, are present at Weippe Prairie and part of the focus of current park weed management. Canada thistle (*Cirsium arvense*) is an emerging invader along the floodplain where the BIHO camas population is monitored. Competition from invasive weed species, including the aforementioned forbs as well as thatch-building grasses such as timothy (*Phleum pratense*), may impact camas populations within the UCBN through competition. Herbicide applications at Weippe Prairie, and to a lesser extent at BIHO, continue as part of the parks’ integrated weed management programs. The impacts of these activities on camas populations are not well understood at this time but are potential stressors as well.

Despite the continued impacts of modern anthropogenic stressors on what appear to be markedly reduced camas populations, the wet prairies of BIHO and NEPE, like their better studied analogues in Oregon’s Willamette Valley, are highly productive ecosystems that exhibit a good potential for restoration (Pendergrass et al. 1998, Taft and Haig 2003). A long-term monitoring program for detecting status and trends in camas populations at BIHO and Weippe Prairie serves as a central information source for park adaptive management decision making and will provide essential feedback on any eventual restoration efforts (Rodhouse et al. 2011). Camas monitoring is particularly important at Weippe Prairie because it is the focal resource for the site, and because invasive plant treatment is an ongoing management concern there. The site is also a

likely target for park restoration efforts in the future. The National Park Service acquired the Weippe Prairie property in 2003 and does not yet have a developed management plan. The implementation of camas monitoring early in the process of NPS management at Weippe Prairie is timely and is greatly facilitating science-based decision making. Park management has considerable latitude in the strategies and tools employed there. At BIHO, where management is less intense and opportunities for restoration are few, given the cultural sensitivity of the battlefield, camas monitoring still provides a valuable indication of overall status and trend of the camas population and its supporting wetland over time.

It is hoped that the UCBN camas monitoring program will deliver timely and helpful information to park managers. Both park sites are managed to preserve the historic landscapes of which camas is a central component. Camas is a facultative wetland species that should respond conspicuously to perturbations in the wet prairie ecosystems of Weippe Prairie and BIHO, thus making it an effective indicator of overall ecological condition. An initial restoration-oriented trend assessment was published by Rodhouse et al. (2011) for both Weippe Prairie and BIHO over the 2005-2010 period, which provided encouraging evidence of increasing trend. We have adopted the recommendations made by Bennetts et al. (2007) and begun the identification of early-warning assessment points. Our first assessment point is a 25% decline in mean camas density. A concomitant 25% increase is also an assessment point, but one better described as an initial desired future condition benchmark rather than an early-warning sign (Bennetts et al. 2007). These were arrived at as starting points in the face of considerable uncertainty concerning camas synecology, were logistically and statistically feasible, and inherently conservative. We will look to add new assessment points as our knowledge about camas and the wet prairie ecosystem grows. Annual reports such as this are important elements in this process.

The National Park Service initiated a camas monitoring program at NEPE in 2005 and at BIHO in 2006, assisted in large part by student "citizen scientists" who participate in annual spring field data collection. The field effort involves counting all established camas plants within quadrats, as well as those plants that flower during that growing season. Thatch depth and the presence of target invasive weeds have also been measured in each quadrat, although thatch depth measurements were discontinued in 2010 following recommendations made by Rodhouse and Jocius (2009). Weather is an additional important driver of camas population dynamics, and summaries from weather stations near each of the parks will be used in modeling long-term trends. The monitoring protocol developed by Rodhouse et al. (2007) was reviewed and approved for implementation by the Pacific West Regional I&M Program Coordinator in October 2007.

I report here on the 2011 sampling results from BIHO, and include results from 2006-2010 to provide context for current estimates of camas density. Changes were made in design and methodology of the sampling protocol during the first three years. We have made some adjustments to the data from these early years, enabling preliminary comparisons among years and identification of baseline patterns of density. Some interesting patterns are emerging in these data, which will serve to stimulate new hypotheses and assessment points. With the protocol complete and the design and methodology stabilized, we have begun to accumulate a robust long-term data set. Given the predictions of climate change in the Pacific Northwest and the legacy of past land use, monitoring UCBN camas prairies over time is sure to shed new light on the important issues of ecosystem recovery and ecological resilience.

Objectives

The monitoring objectives for this program are:

- Estimate mean established plant and flowering stem densities (status) in the camas populations of Weippe Prairie and within the targeted portion of BIHO.
- Determine trends (net trend, as reviewed by MacDonald 2003) in the densities of established camas populations in Weippe Prairie and BIHO.
- Determine trends in the proportion of flowering to non-flowering camas plants in Weippe Prairie and BIHO.
- Determine trends in the frequency of occurrence of targeted invasive plants (currently these are orange hawkweed, sulfur cinquefoil, oxeye daisy, and reed canarygrass at Weippe Prairie and Canada thistle at BIHO).
- Determine the magnitude and direction of camas density response to measurable explanatory variables such as winter precipitation and specific management activities.

Note: “Established camas plants” are those plants expressing 2 or more leaves and excludes single-leaved seedlings. The significance of this distinction is discussed in greater detail in the UCBN camas monitoring protocol (Rodhouse et al. 2007).

This report summarizes estimates of established camas density and flowering plant density in the BIHO camas population over the period 2006-2011. A companion report will be provided for Weippe Prairie for the same time period as well. We consider the trends reported here to be encouraging but preliminary estimates that should be interpreted cautiously. A more in depth trend analysis report will be provided after the 2012 field season.

Methods

The UCBN initiated camas monitoring at BIHO, located near Wisdom, Montana, in 2006. Figure 1 shows the sampling frame and 2011 quadrat locations. Sampling methods followed those detailed by Rodhouse et al. (2007). The approach is quadrat-based and involves the measurement of camas plant density, camas flowering stem density, and the presence of targeted invasive plant species in a random sample of 0.6 m² quadrats from within a sampling frame that captures the most important portion of the BIHO camas population. Cultural concerns led to the development of a targeted sampling frame with arbitrary boundaries that encompassed the largest and most abundant portion of the camas population in the park (Figure 1). Therefore, the scope of inference from monitoring is strictly limited to this core area rather than to the entire population in the Battlefield. Quadrats are 4 m long x 15 cm wide, designed to reach across the patchy distribution of camas in the meadow and reduce the number of plots without camas. Quadrats were placed at randomly-selected locations, and locations were generated from the Generalized Random Tessellation Stratified (GRTS) sampling design algorithm. This sampling design results in a well dispersed, spatially-balanced sample (Figure 1). Sample sizes at BIHO were 81, 124, 150, 150, 160 and 154 for the years 2006-2011. Sample sizes were increased following power analysis in 2007 (Rodhouse et al. 2007) and as field capacity increased through the support of park staff. The target sample size has been 150 since 2008, although oversamples have been picked up during the last 2 years. All camas plants were included in camas density counts in 2006, but a protocol change beginning in 2007 led to the exclusion of single-leaved seedlings. Camas seedlings are ephemeral and highly variable in their germination, and this led us to focus the protocol on *established* camas plants beginning in 2007. This is the most significant methodological change and one that requires careful and cautious consideration of comparisons among the first 2 years.

Camas flowering stem density was also measured at each quadrat. Mature camas plants can produce one conspicuous and persistent inflorescence each year (see cover illustration), making flowering stem counts reliable and direct. Not all mature plants flower in a given year, however, and variability in flowering is of interest to the UCBN. Graminoid thatch depth was measured at each quadrat beginning in 2006 as well. Thatch depth was measured in three pre-established locations along the quadrat long axis and averaged. This practice was discontinued in 2010 due to lack of evidence of any relationship between thatch depth and density (Rodhouse and Jocius 2009). There currently are no weed species being recorded in quadrats at BIHO, although there is growing concern that the Canada thistle infestation is increasing and may be encountered in quadrats in the near future.

Early monitoring results indicated that density counts were extremely skewed and required alternative analytical procedures that did not require assumptions of normality (Rodhouse et al. 2007). I used a non-parametric bootstrap computer-intensive method to conduct power analyses with 2006 and 2007 data following methods outlined by Hamilton and Collings (1991). For this report, 90% confidence intervals around means were calculated using the simple bootstrap percentile method described by Efron and Tibshirani (1993) and Manly (2001). All six years of data are displayed graphically using a control or “conformance” chart approach following recommendations by Beauregard et al. (1992) and Morrison (2008). Because of our initial interest in “assessment points” \pm 25% of a baseline mean value, the charts displayed here are a-statistical in the sense that control or “action” limits are not based on an underlying probability

distribution but arbitrarily established at assessment point values. I used the mean of 2007 and 2008 mean values as a preliminary baseline, but note that baseline decisions will be updated as additional years of data become available. I used ordinary kriging (Fortin and Dale 2009) to produce an interpolated density map for BIHO using 2011 data. Predictive density maps provide useful interpretive tools to illustrate density patterns across the floodplain. Finally, I summarize recent weather patterns by plotting annual and 10-year running means for annual precipitation and temperature records from the Wisdom, Montana NOAA co-op weather station (station # 249067, western regional climate center). All analyses and graphics were prepared in the R software and computing environment (R version 2.8, <http://www.r-project.org/>) and ArcGIS (ESRI, Inc., Redlands, California).



Big Hole Camas Density 2011

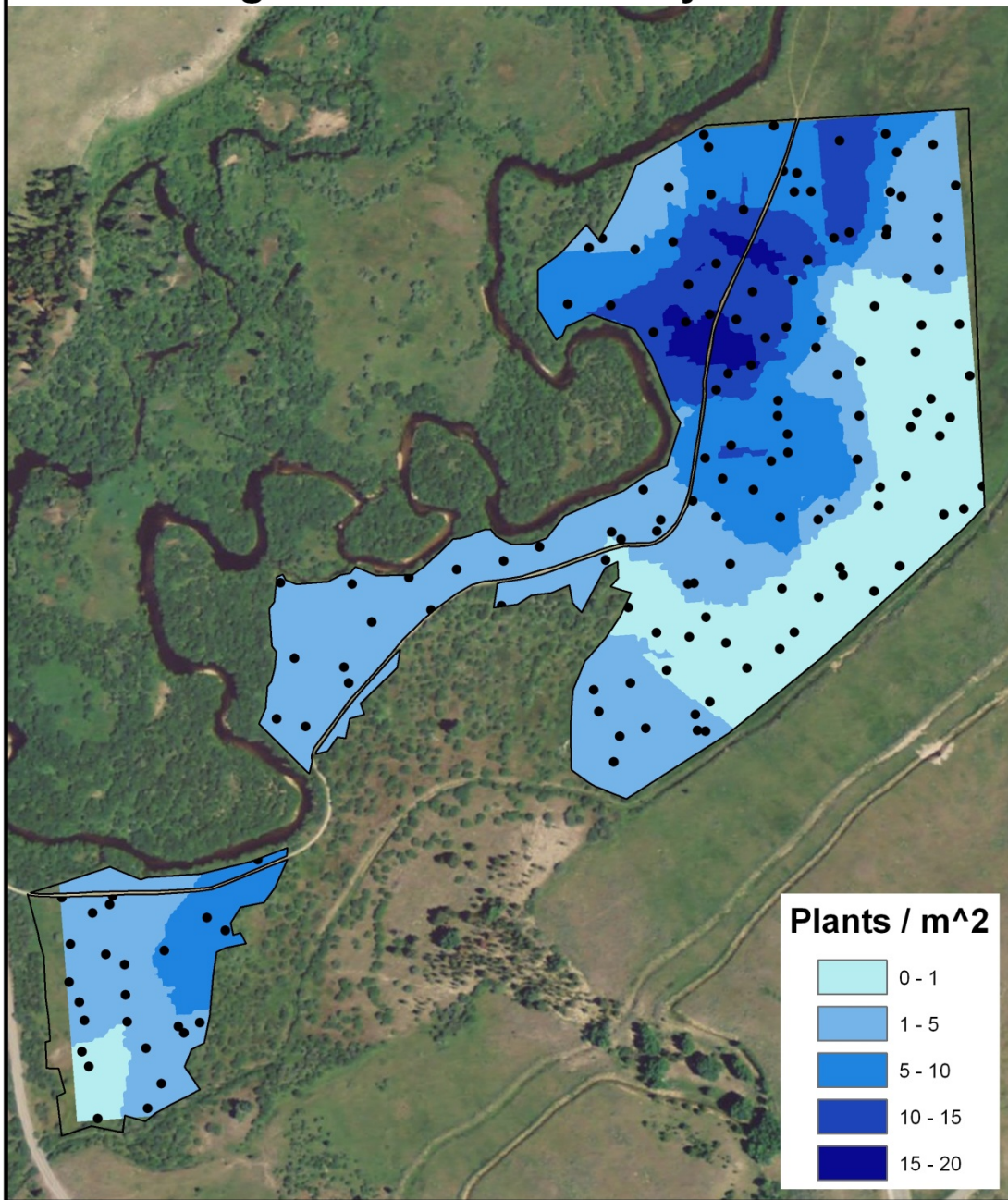


Figure 1. The sampling frame along the Big Hole River floodplain in BIHO, with 2011 quadrat locations (black points) and predicted patterns of camas density based on a kriging interpolation from 2011 established camas plant counts.

Results

In 2011, based on counts of camas in one-hundred-fifty-four 0.6 m² quadrats, mean density of established camas plants/m² at BIHO was estimated to be 6.8 (90% confidence interval 4.8-9.0). This was the highest estimate over the 6-year study period (Table 1). Estimated mean density of flowering camas plants/m² was 1.5 (90% confidence interval 1.1-2.0), up from 2010 but down slightly from earlier estimates (Table 1). Flowering plant density is more variable than overall established plant density (Table 1).

Table 1. Estimated means and 90% confidence intervals for established camas plant density and flowering plant density.

Year	n	Plants/m ²		90% percentile		Stems/m ²		90% Percentile		Flowering
		Density	lower	upper	Flowers	lower	upper	Ratio		
2011	154	6.79	4.80	9.00	1.53	1.08	1.99	0.22		
2010	160	5.40	3.82	7.14	0.56	0.38	0.76	0.1		
2009	150	5.78	4.18	7.52	1.58	1.06	2.16	0.27		
2008	150	5.71	3.97	7.67	2.69	1.83	3.69	0.47		
2007	124	3.86	2.53	5.52	1.90	1.25	2.68	0.49		
2006	81	4.22	2.19	6.58	0.68	0.37	1.02	0.16		

Figures 2 and 3 provide a graphical description of the yearly variation in camas density and flowering density over the 6-year period, relative to a 2007-2008 baseline. A steadily increasing trend in camas density is apparent from Figure 2. Spatial variation in camas density is described by the predicted density map (Figure 1). This pattern has been relatively consistent over time (Rodhouse and Jocius 2009, 2011) and indicates that the area of highest density is along the trail in the northern portion of the frame, near the Nez Perce encampment area. No invasive weeds were encountered in plots in 2011, although Canada thistle was noted by some of the field crew while walking between plots. Recent weather patterns have been wetter and warmer than average during the last several years (Figures 4 and 5), which may have influenced both the upward trends in camas density as well as the apparent increase in Canada thistle encounters.

Camas Density 2006-2011

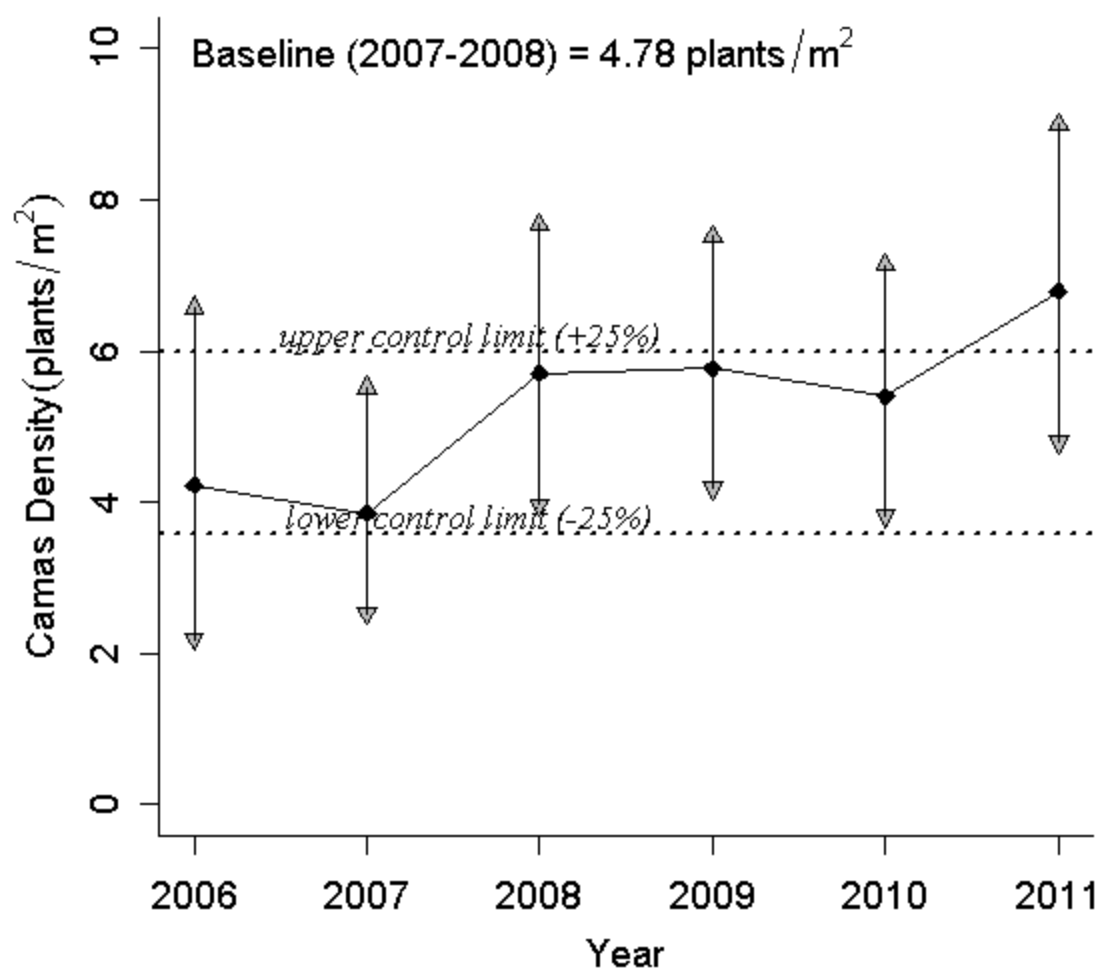


Figure 2. A “conformance” chart that plots annual established camas plant densities and 90% confidence intervals relative to control limits that are $\pm 25\%$ of the 2007-2008 baseline average density.

Flowering Camas Density 2006-2011

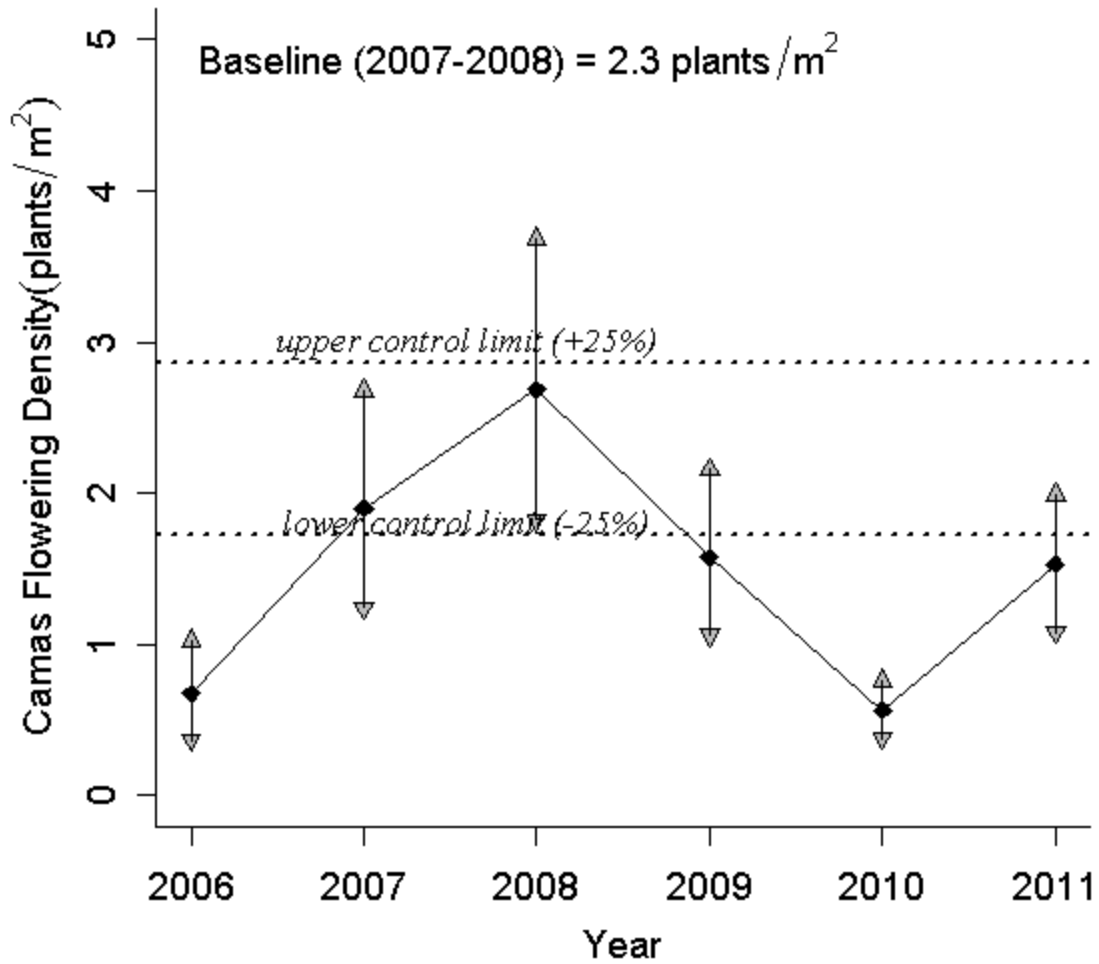


Figure 3. A “conformance” chart that plots annual flowering camas plant densities and 90% confidence intervals relative to control limits that are $\pm 25\%$ of the 2007-2008 baseline average density.

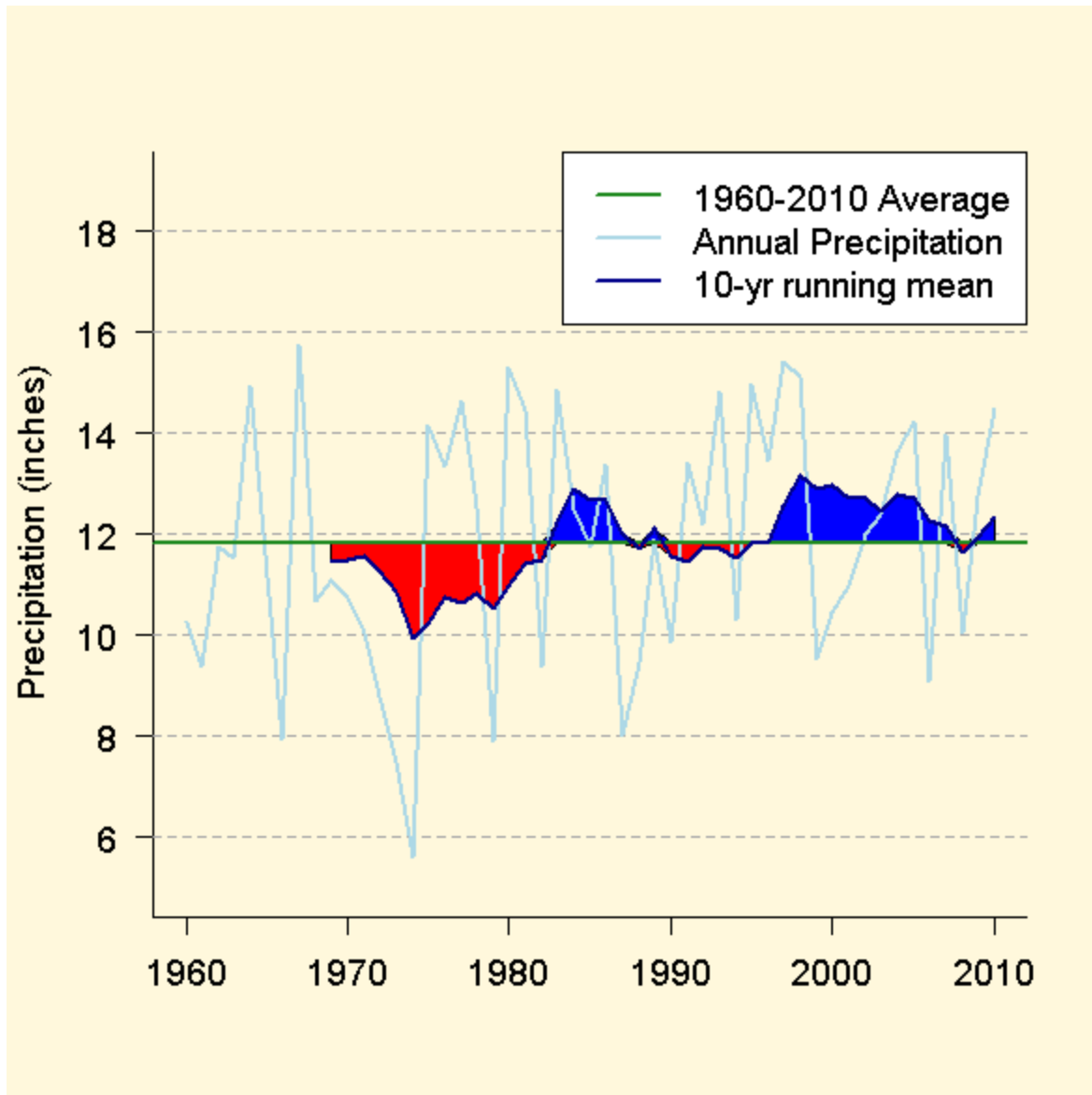


Figure 4. Annual and 10-year running means for precipitation recorded at the Wisdom, Montana NOAA co-op weather station (#249067, <http://www.wrcc.dri.edu>), located 250 feet below and 10 miles east of the Battlefield.

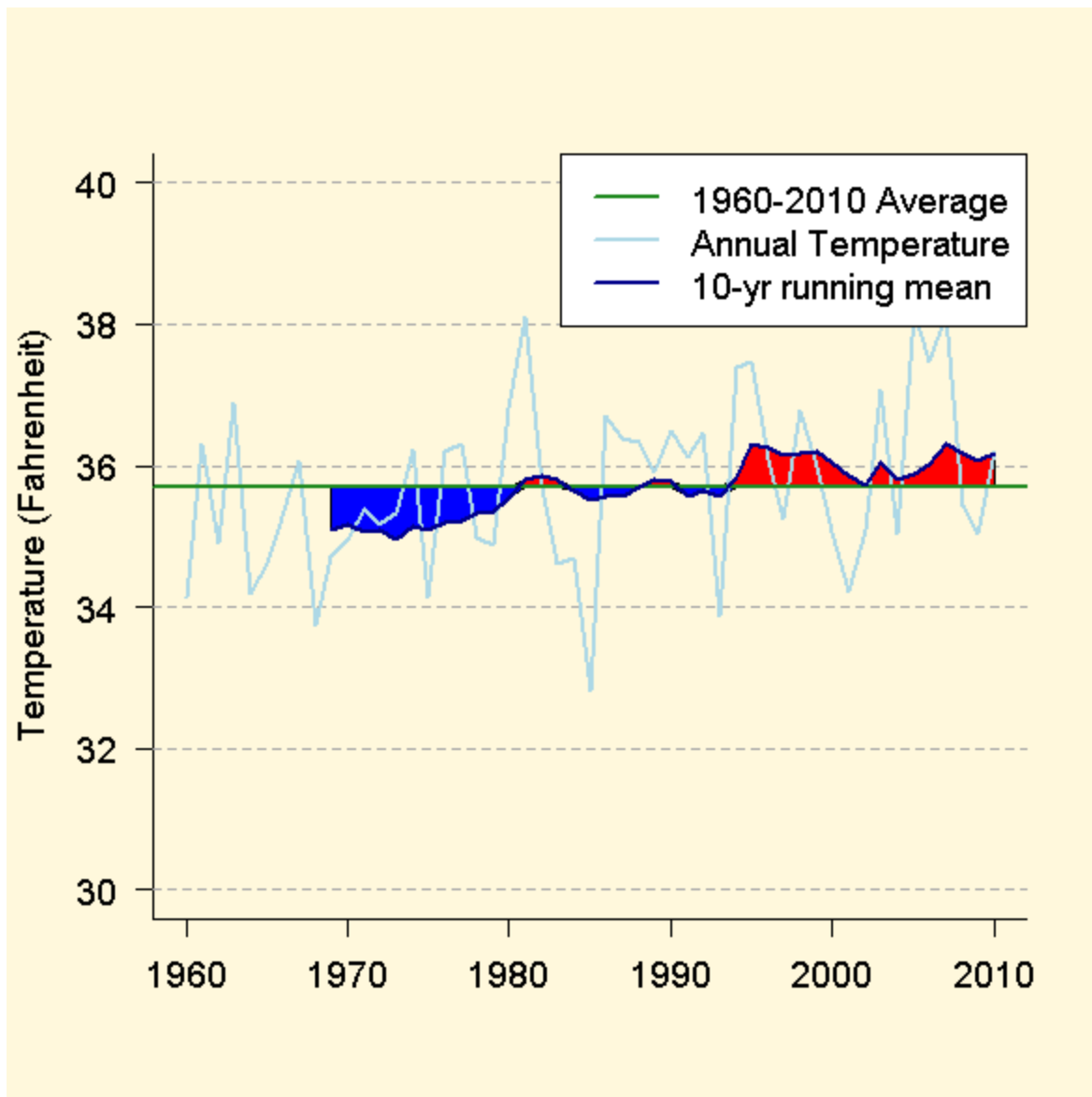


Figure 5. Annual and 10-year running means for temperature recorded at the Wisdom, Montana NOAA co-op weather station (#249067, <http://www.wrcc.dri.edu>), located 250 feet below and 10 miles east of the Battlefield.

Discussion

Based on results from surveys in 2011, placed within the context of the previous 5 years of surveys, the camas population is increasing in density within the monitored portion of the floodplain meadow in Big Hole National Battlefield. It is not clear yet how sustained this trend will be, or why such a trend is occurring. Management of the meadow has been relatively passive in recent years, with only modest amounts of herbicide applications in targeted areas to control Canada thistle. Weather patterns over the study period have been generally wetter and warmer than previous decades and this may be influencing camas trend. Interestingly, the pattern of flowering density does not track the overall increase in plant density. It is not clear yet how tightly the variation in annual flowering tracks annual variation in weather and climate. A longer time series will be required to assess this. It is possible that flowering lags behind peaks in precipitation by 1 or more years. Currently there is no data available on the Canada thistle infestation in the sampling frame, other than anecdotal observations of an apparent increase. However, crews are alert to the plant and, given its conspicuous growth form, it will be noted in future years if it is found within camas monitoring quadrats. It is not clear how much of a threat Canada thistle poses to the camas population, but regardless, it is undesirable from the perspective of ecological integrity and historical fidelity, and is a growing concern for Battlefield staff.

Literature Cited

- Angiosperm Phylogeny Group (APG). 2003. An update of the Angiosperm Phylogeny Group classification for the orders and families of flowering plants: APG II. *Botanical Journal of the Linnean Society* 141:399-436.
- Bennetts, R. E., J. E. Gross, K. Cahill, C. McIntyre, B. B. Bingham, A. Hubbard, L. Cameron, and S. L. Carter. 2007. Linking monitoring to management and planning: assessment points as a generalized approach. *George Wright Forum* 24:59-77.
- Beauregard, M. R., R. J. Mikulak, and B. A. Olson. 1992. *A practical guide to statistical quality improvement: opening up the statistical toolbox*. Van Nostrand Reinhold, New York.
- Dahl, T. E. 1990. *Wetlands: losses in the United States: 1780's to 1980's*. US Fish and Wildlife Service, Washington DC.
- Efron, B., and R. Tibshirani. 1993. *An introduction to the bootstrap*. Chapman and Hall, London, England.
- Fortin, M.-J, and M. Dale. 2005. *Spatial analysis: a guide for ecologists*. Cambridge University Press, Cambridge, England.
- Gould, F. W. 1942. A systematic treatment of the genus *Camassia* Lindl. *American Midland Naturalist* 28:712-742.
- Hamilton, M. A., and B. J. Collings. 1991. Determining the appropriate sample size for nonparametric tests for location shift. *Technometrics* 33:327-337.
- Harbinger L. J. 1964. The importance of food plants in the maintenance of Nez Perce cultural identity. Thesis. Washington State University, Pullman, Washington.
- Havard, V. 1895. Food plants of the American Indians. *Bulletin of the Torrey Botanical Club* 22:98-123.
- Hunn E. S. 1981. On the relative contribution of men and women to subsistence among hunter-gathers of the Columbia Plateau: a comparison with Ethnographic Atlas summaries. *Journal of Ethnobiology* 1:124-134.
- Leiberg, J. B. 1897. General report on a botanical survey of the Coeur d'Alene mountains in Idaho. *Contributions of the U.S. National Herbarium*. Vol V., No. 1., Washington DC.
- MacDonald, T. 2003. Review of environmental monitoring methods: survey designs. *Environmental Monitoring and Review* 85:277-292.
- Manly, B. F. J. 2001. *Randomization, Bootstrap and Monte Carlo Methods in Biology*. Chapman and Hall/CRC, Boca Raton, Florida.

- Mastrogiuseppe, J. 2000. Nez Perce ethnobotany: a synthetic review. Report to Nez Perce National Historic Park, Spalding, ID. Project # PX9370-97-024.
- Meehan, T. 1898. The plants of Lewis and Clark's expedition across the continent, 1804-1806. *Proceedings of the Academy of Natural Sciences of Philadelphia* 50:12-49.
- Morrison, L. 2008. The use of control charts to interpret monitoring data. *Natural Areas Journal* 28:66-73.
- Murphey, E. V. A. 1987. *Indian Uses of Native Plants*. Mendocino County Historical Society, Ukiah, California.
- Pendergrass, K. L., P. M. Miller, and J. B. Kauffmann. 1998. Prescribed fire and the response of woody species in Willamette Valley wetland prairies. *Restoration Ecology* 6:303-311.
- Reed, P. B., Jr. 1988. National list of plant species that occur in wetlands: 1988 national summary. U.S. Fish and Wildlife Service. Biological Report 88 (24).
- Rodhouse, T. J., K. M. Irvine, K. T. Vierling, and L. A. Vierling. 2011. Modeling temporal trend in the presence of spatial complexity: a Bayesian approach for a wetland forb population undergoing restoration. *PLoS ONE* 6:e28635.
- Rodhouse, T. J., M. V. Wilson, K. M. Irvine, R. K. Steinhorst, G. H. Dicus, L. K. Garrett, and J. W. Lyon. 2007. Camas lily monitoring protocol. Version 1.0. Natural Resource Report NPS/UCBN/NRR—2007/011. National Park Service, Fort Collins, Colorado.
- Rodhouse, T. J., and J. L. Jocius. 2009. Camas monitoring at Nez Perce National Historical Park and Big Hole National Battlefield: 2009 annual report. Natural Resource Technical Report NPS/UCBN/NRTR—2009/265. National Park Service, Fort Collins, Colorado.
- Rodhouse, T. J., and J. L. Jocius. 2011. Camas monitoring at Nez Perce National Historical Park and Big Hole National Battlefield: 2010 annual report. Natural Resource Technical Report NPS/UCBN/NRTR—2011/430. National Park Service, Fort Collins, Colorado.
- Taft, O. W., and S. M. Haig. 2003. Historical wetlands in Oregon's Willamette Valley: implications for restoration of winter waterbird habitat. *Wetlands* 23:51-64.
- Thoms, A. 1989. The northern roots of hunter-gatherer intensification: camas and the Pacific Northwest. Dissertation. Washington State University, Pullman, Washington.
- Turner, N. J., and H. V. Kuhnlein. 1983. Camas (*Camassia* spp.) and riceroot (*Fritillaria* spp.): two liliaceous "root" foods of the Northwest Coast Indians. *Ecology of Food and Nutrition* 13:199-219.

The Department of the Interior protects and manages the nation's natural resources and cultural heritage; provides scientific and other information about those resources; and honors its special responsibilities to American Indians, Alaska Natives, and affiliated Island Communities.

NPS 341/121237, June 2013

National Park Service
U.S. Department of the Interior



Natural Resource Stewardship and Science

1201 Oakridge Drive, Suite 150
Fort Collins, CO 80525

www.nature.nps.gov

EXPERIENCE YOUR AMERICA™