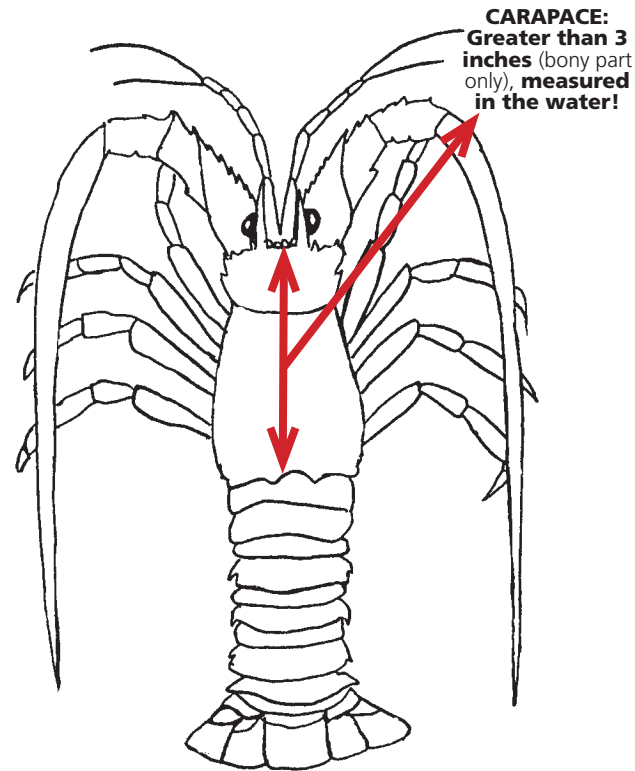


HOW TO MEASURE

A measuring device must be utilized when harvesting spiny lobsters. Each person in the water must have a measuring device with them. **MEASUREMENTS MUST BE MADE *BEFORE* THE LOBSTER IS REMOVED FROM THE WATER.**

The CARAPACE is the front or head and body section of the lobster.

When measuring, begin at the front edge of the bony part between the horns (does not include the softer portion between the eyes). Proceed along the middle of the back to the rear edge of the top part of the carapace. Measurements pertain only to the carapace length. **TAIL MEASUREMENTS ARE NOT VALID.**



SIZE

Lobsters that are kept must have a **carapace length of more than 3 inches, measured in the water.** Undersized lobster must be immediately released unharmed. **ALL LOBSTERS MUST BE IN WHOLE CONDITION UNTIL RETURNED TO THE MAINLAND.** "Wringing" or separating the tail from the body is prohibited in Park waters. Possession of "wrung" or separated tails in or on the Park's waters is prohibited. **Regulations are enforced on and off the water.**

EGG-BEARING FEMALES

Any egg-bearing females, regardless of size or species, **must be immediately returned to the water unharmed.** Eggs are found on the underside of the tail and appear as orange, berry-like formations. Eggs must not be removed or molested.

DIVING/SNORKELING

State law requires the prominent display of a diver-down flag when diving or snorkeling.

The dive flag must be 20"x 24" when displayed from a vessel, and a stiffener is required to keep the flag unfurled.

The dive flag must be prominently displayed from the highest point on vessel with 360° visibility. Divers must stay within 300 feet of dive flag in open water, and within 100 feet in rivers, inlets and narrow channels.

Diver-down symbols displayed from the water must be at least 12"x 12" and can be in the form of a flag or a buoy.

Vessels within 300 feet of a dive flag in open waters or within 100 feet in rivers, inlets and narrow channels must operate at idle speed.

It is prohibited for anyone to dive or snorkel in, or within 100 feet of any marked channel within Biscayne National Park or in any harbor within the park.

To report a violation of law within Biscayne National Park or for emergency assistance call 305-242-7740 or #NPS

BISCAYNE NATIONAL PARK SEASONS AND BAG LIMITS for 2015

Regulations Enforced On and Off the Water!

2-DAY SPORT SEASON

Wednesday and Thursday,

July 29 & 30, 2015

6 lobster per ACTIVE HARVESTER* per day

REGULAR SEASON

August 6, 2015 – March 31, 2016

6 lobster per ACTIVE HARVESTER* per day

**ACTIVE HARVESTER: People harvesting may not take someone else's bag limit (including children) who are not actively harvesting, and/or from those who are not properly licensed.*

For information on recreational regulations outside of Biscayne National Park contact Florida Fish and Wildlife Conservation Commission at 850-488-6058, or visit myfwc.com/fishing/saltwater/recreational/lobster/

LICENSE REQUIREMENTS

The harvest of lobster in Biscayne National Park is in accordance with state fishing regulations. A recreational saltwater license and spiny lobster permit are required for harvest. For more information or to purchase by phone call 1-888-347-4356 or online at www.myfwc.com/license

METHODS

Lobsters may only be taken using hands, hand-held nets, bully nets, or other means which permit the lobsters to be released unharmed if not legal size. USE OF GRAINS, SPEARS, GRABS, HOOKS, OR SIMILAR DEVICES IS PROHIBITED. Traps may not be used without a permit from the Florida Fish and Wildlife Conservation Commission.

For further information on lobstering or diving in Biscayne National Park call 305-230-7275 or visit www.nps.gov/bisc/lobster.htm

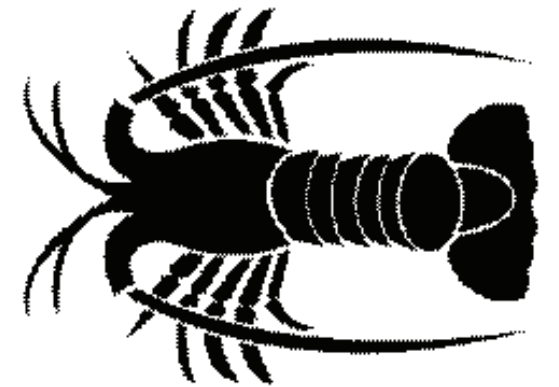
Biscayne National Park



National Park Service

U.S. Department of the Interior

LOBSTERING 2015



Your guide to Biscayne National Park Lobster Regulations

The National Park Service cares for special places saved by the American people so that all may experience our heritage.

EXPERIENCE YOUR AMERICA™

2016
National Park Service
CENTENNIAL
NPS.GOV

FIND YOUR
PARK

BISCAYNE BAY - CARD SOUND LOBSTER SANCTUARY

THE TAKING OF LOBSTER IS PROHIBITED AT ANY TIME OF THE YEAR in the Biscayne Bay-Card Sound Lobster Sanctuary (see dotted area on map). **Recreational trapping is prohibited.**

All natural, artificial, and tidal creeks between the islands and along the mainland are included in the Sanctuary and are closed to lobstering.

Lobsters may be taken **east of the islands during the legal seasons**, except in the Legare Anchorage (see map) where swimming, snorkeling, and diving is prohibited year-round.

Legally taken lobsters may be transported through the Sanctuary as long as no one from the boat is overboard (in the water) while inside the Sanctuary.

RED LIONFISH



Lionfish are a venomous invasive species that have negative impacts on our native species and habitats. Divers and anglers are encouraged to remove lionfish from Florida waters.

FACTS:

- **Lionfish are delicious!** When cooked, it is firm, white and flaky with a non-fishy taste comparable to flounder, black sea bass or hogfish. Broil, bake, steam, poach or grill it. You can even find it in some local restaurants.
- **Only the spines contain venom**, the flesh does not! When handled carefully by the gill plates, simply cut the spines off and fillet like any other fish. Avoid the spines along the dorsal, pelvic and anal fins. Remember, even when the fish has been on ice, puncture by lionfish spines can cause painful injuries.
- **There are no minimum size limits, closed seasons or bag limits, and a recreational fishing license is not required to harvest lionfish** when using dip nets, pole spears, Hawaiian slings or any spearing device designed and marketed exclusively for lionfish.

