

# Charit Creek Lodge

Pioneer Hospitality  
with Added Comforts



Charit Creek Lodge is the perfect way to rough it. Away from the everyday world, you'll enjoy:

- Cozy accommodations.
- A hearty dinner and country breakfast.
- Outdoor games, such as volleyball and horseshoes.
- Meeting space for group retreats.
- A horse stable including hay.

There is no electricity, but each cabin is equipped with kerosene lamps and wood burning stoves. The restrooms have running water, and there are showers heated by solar energy.

Maps of hiking and horse trails leading to Charit Creek Lodge will be sent to you with your reservation confirmation. **All meals are scheduled by Eastern Time.**

### Call or write for reservations

Charit Creek Lodge  
250 Apple Valley Road, Sevierville, TN 37862  
423/429-5704

### For additional Big South Fork Information Contact:

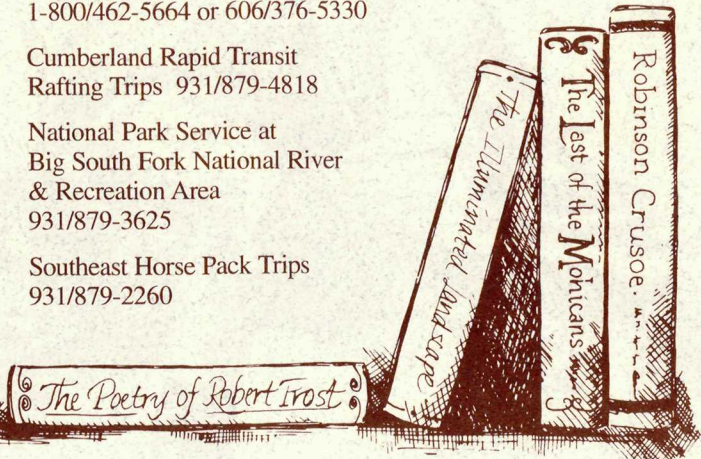
Bandy Creek Horse Stables, 931/879-4013

Big South Fork Scenic Railway  
1-800/462-5664 or 606/376-5330

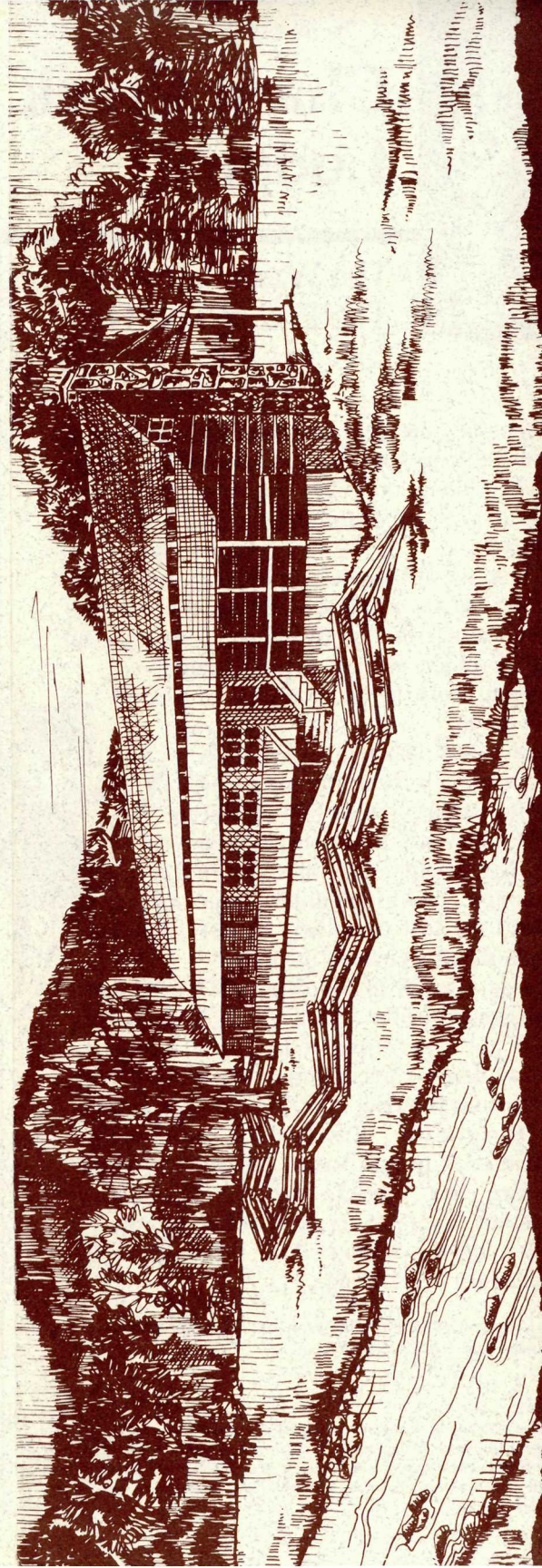
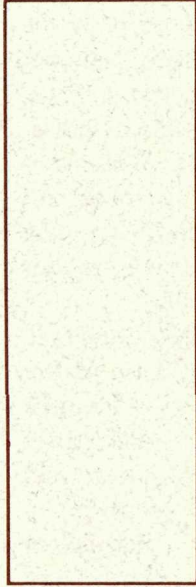
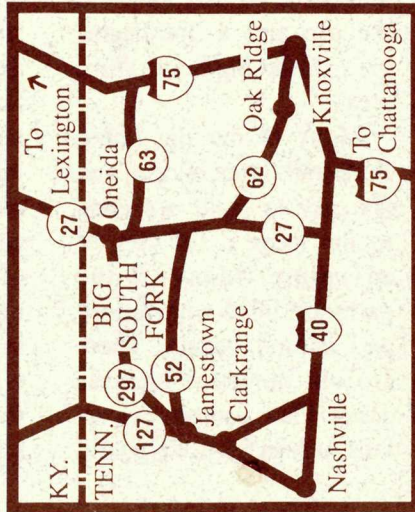
Cumberland Rapid Transit  
Rafting Trips 931/879-4818

National Park Service at  
Big South Fork National River  
& Recreation Area  
931/879-3625

Southeast Horse Pack Trips  
931/879-2260

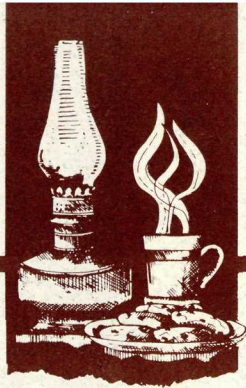


250 Apple Valley Road  
Sevierville, Tennessee 37862  
423/429-5704



# Charit Creek Lodge

Big South Fork National  
River and Recreation Area



# Charit Creek Lodge

# Getting There Is The Real Fun

## The Warm Glow At The End of The Trail

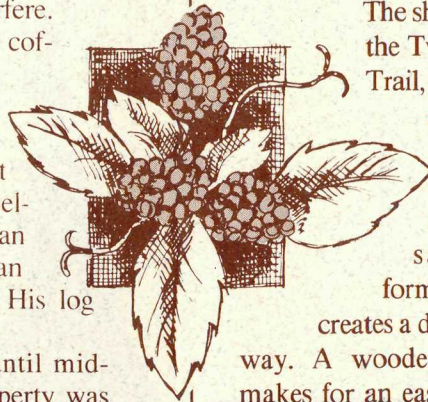
Let the pleasure you get from the wilderness continue long after the sun goes down. Charit Creek Lodge\* offers congenial accommodations and hearty meals without disturbing the nature you've come to enjoy.

After a true country dinner, sit back in your front-porch rocker and see a sky full of stars, listen to the stream, and watch the firefly display; no hum of machinery or bright electric lights to interfere. Each morning, wake to the smell of fresh coffee on the stove.

Located where Charit Creek and Station Camp Creek meet, the lodge rests in a beautiful pasture framed by magnificent bluffs. This valley has given shelter to travelers in the Big South Fork since the Indian hunting camps. A white hunter, Jonathan Blevins, built the first cabin here in 1817. His log structure still stands as part of the lodge.

Operated as a youth hostel from 1987 until mid-1989, management of the Charit Creek property was awarded to the operators of LeConte Lodge, a renowned wilderness accommodation in the Great Smoky Mountains National Park. The new proprietors, Stokely Hospitality Enterprises, under the management of Tim and Lisa Line, are currently transforming the hostel into a full-service accommodation, while preserving its rustic integrity.

Your visit to the Big South Fork isn't complete without a stay at Charit Creek Lodge.



Charit Creek Lodge, located deep in the Big South Fork National River and Recreation Area, is only accessible by horseback or foot. Well-maintained hiking and horse trails lead you through interesting and beautiful places on your way to the lodge.

The shortest trail, the Twin Arches Trail, is 1.8 miles and passes over and under a magnificent sandstone formation that creates a double archway. A wooden staircase makes for an easy climb to the top and a 360-degree view of the Big South Fork area.

Many of the Big South Fork trails interconnect, and it's easy to make traveling to the lodge a full day of adventure. Many of the paths are filled with history and natural beauty. There are old homesites such as Jakes Place, serene waterfalls such as Slave Falls, and

on every trail you'll be surrounded by commanding bluffs, peaceful forests and whatever wonders you discover along the way.

Summer is hot in the Big South Fork, and the spring and autumn are pleasantly cool. For your trip to Charit Creek Lodge, you'll need water for the trail, rain gear, sturdy shoes, a flashlight and a knapsack for your overnight necessities.

The activities available in Big South Fork National River and Recreation Area are endless. Recently obtained by the National Park Service, the area encompasses more than 100,000 acres on the Cumberland Plateau straddling the Kentucky/Tennessee border. The Big South Fork of the Cumberland River flows through the area. The Big South Fork has more than 80 miles of navigable river and hundreds of miles of hiking and horse trails. Sports such as canoeing, kayaking, fishing, white-water rafting, swimming, rock climbing, and, of course,

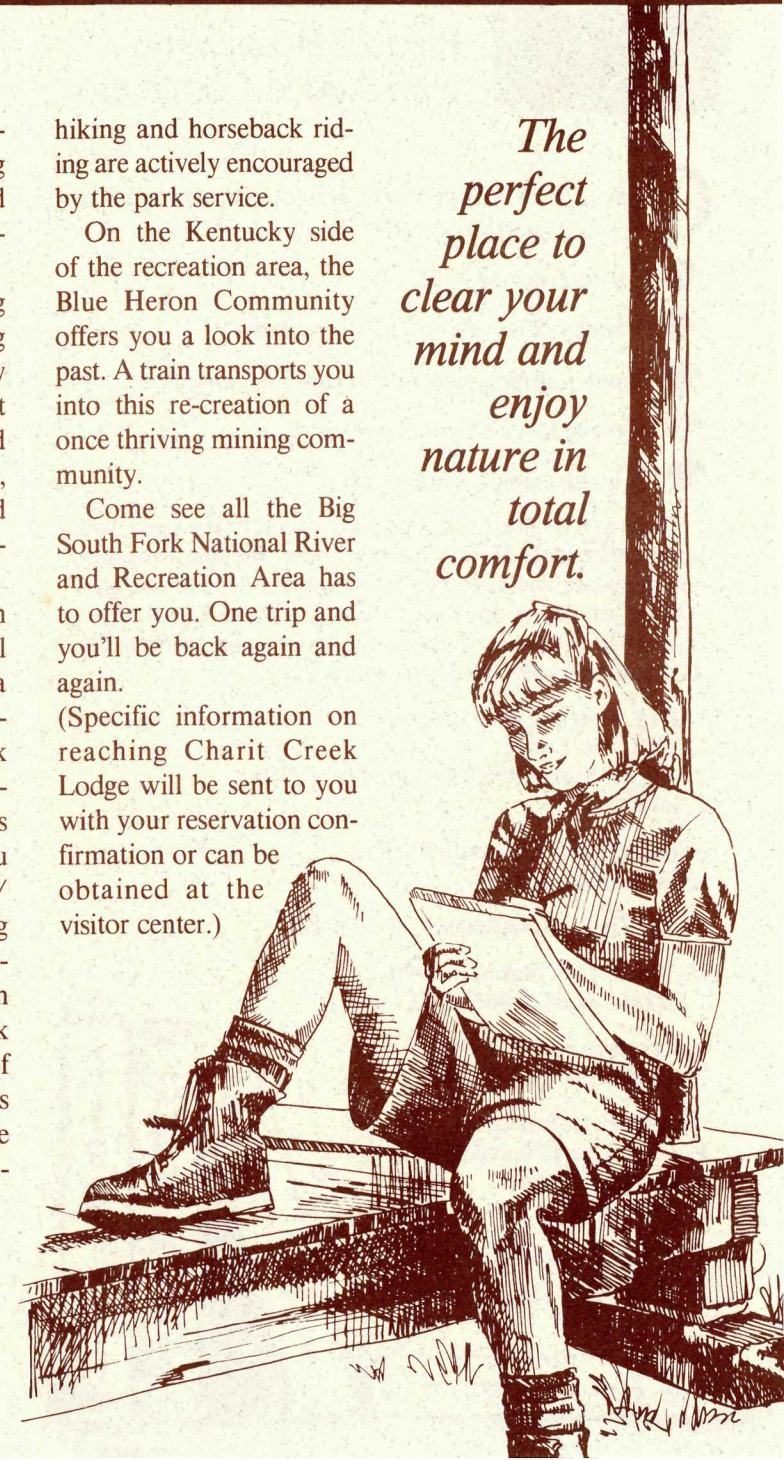
hiking and horseback riding are actively encouraged by the park service.

On the Kentucky side of the recreation area, the Blue Heron Community offers you a look into the past. A train transports you into this re-creation of a once thriving mining community.

Come see all the Big South Fork National River and Recreation Area has to offer you. One trip and you'll be back again and again.

(Specific information on reaching Charit Creek Lodge will be sent to you with your reservation confirmation or can be obtained at the visitor center.)

*The perfect place to clear your mind and enjoy nature in total comfort.*



\*Charit Creek Lodge is managed by LeConte Lodge LTD., Partnership, an authorized National Park Service concession.

### Cancellation Policy

Much advance planning is necessary to properly run a wilderness lodge. If you must cancel your reservation, 30 days notice is required to guarantee a full refund of your payment. If you need to cancel with less than 30 days notice, still notify us as soon as possible. While we can't guarantee a refund, if we can rent your spot, we'll gladly return your payment.