

*Moses H. Cone Memorial Park*

BLUE RIDGE PARKWAY



*North Carolina*

# Moses H. Cone Memorial Park

... a public pleasuring ground and recreation area for all to enjoy ...

High in the heart of the Blue Ridge lies Moses H. Cone Memorial Park, a 3,600-acre recreational area straddling the Blue Ridge Parkway. The park is 1 of 11 such areas developed along the parkway by the National Park Service. It was deeded to the Federal Government in 1950 by the Moses H. Cone Memorial Hospital, Greensboro, N.C., the hospital having acquired it under a trust created in 1911 by Bertha Lindau Cone, widow of Moses H. Cone.

Upon Mrs. Cone's death in 1947, virtually all of her estate became the property of the hospital. These lands and this park are maintained in accordance with her wishes as a public "pleasure ground" and recreation area for all to enjoy as an everlasting memorial to her husband. Under the terms of Mrs. Cone's indenture, the hospital continues to contribute \$10,000 annually to the upkeep of the park.

The Parkway Craft Center, now a busy home of the Southern Highland Handicraft Guild, was originally known as Flat Top Manor. Built at the turn of the century by Moses H. Cone, it represents the undertaking of a man of perseverance and decision. Practically all of the material, including lumber and furnishing for the 20-room dwelling, was hauled by oxen up steep mountain roads from the railhead at Lenoir, 25 arduous miles away.

The architecture of the manor and the landscaping of the park reflect the personal tastes of Mr. and Mrs. Cone. The estate had its own water supply piped directly from a spring nearby. A carbide plant back of the manor produced gas for lighting and cooking. Two huge forced-air, wood-burning furnaces heated the spacious rooms, the fireplaces being used merely as ornaments.

Moses H. Cone was popularly known as the "Denim King." As a young man, he and his brother Ceasar traveled throughout the South as representatives of their father's wholesale grocery business. They soon recognized the great possibilities for growth of the textile industry, then moving southward to take advantage of proximity to the vast cottonfields. In fact, their first mill, erected in 1896 near Greensboro, N.C., for the manufacture of denim, was named "Proximity Cotton Mill." It and other cotton mills and finishing plants, since established throughout the Southern States, form the extensive Cone Mills Corporation.

At his Flat Top Manor estate, Moses H. Cone escaped from the cares of business. Here he could indulge in his principal hobbies of road building and tree planting. Horseback and carriage riding on the 20 miles of roads and bridle paths which he engineered and

The National Park System, of which Blue Ridge Parkway is a unit, is dedicated to conserving the scenic, scientific, and historic heritage of the United States for the benefit and enjoyment of its people.



Bass Lake from the porch of the craft center.

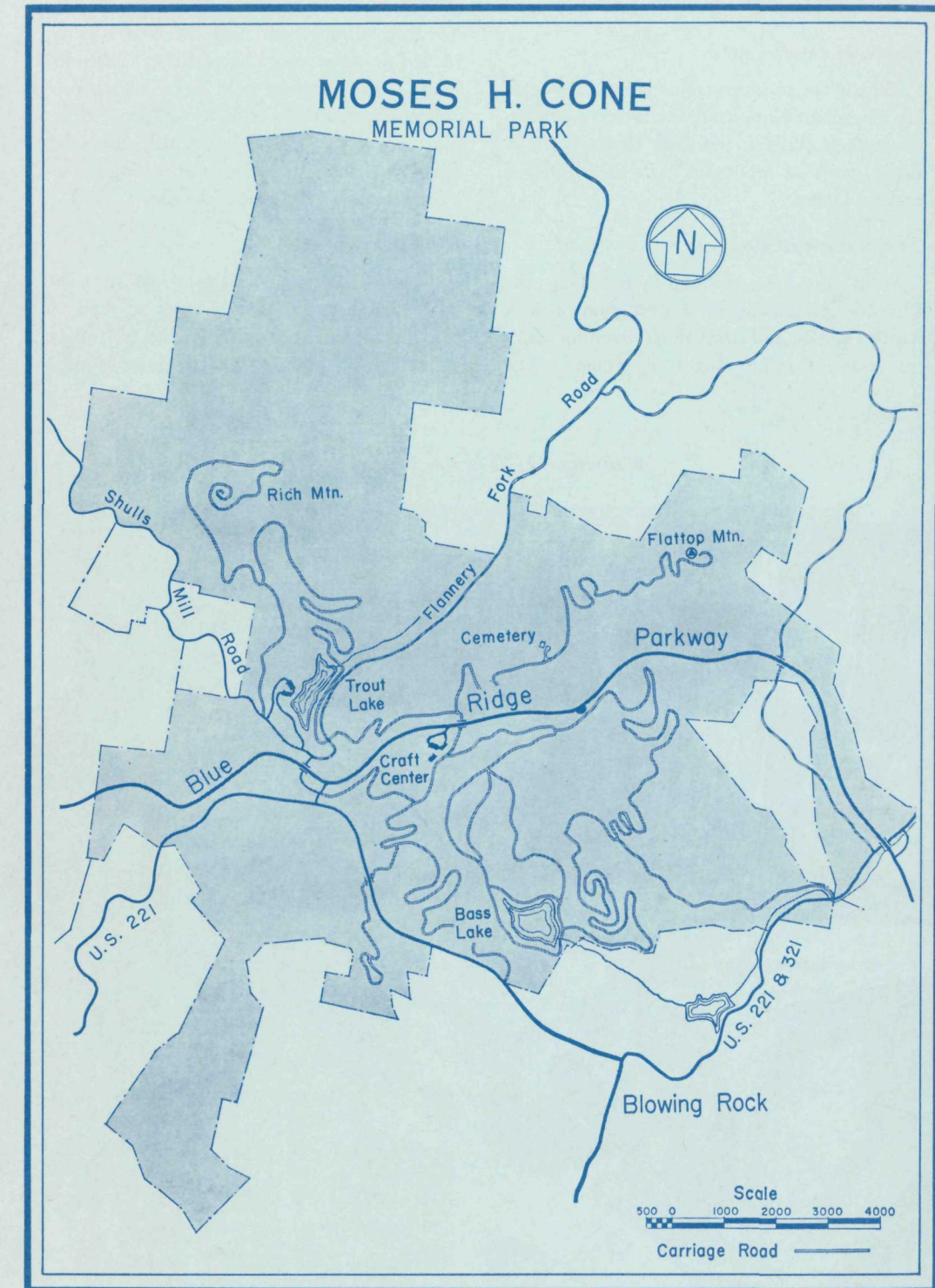
built were favorite pastimes. He also constructed a 16-acre trout lake and a 22-acre bass lake on the estate. He was one of the first orchardists whose apple trees now trim the mountain flanks. Here hardy varieties of apples were grown with scientific care, and fruit exhibited in a Washington State fair won him a first in its class.

Forests, including tracts of virgin timber, interspersed the 500 acres of farmland. No tree was ever cut unless diseased or damaged. The woods, which also served as a wildlife sanctuary, were stocked with deer from Pennsylvania. To tend the enterprises of the estate, Mr. Cone maintained a tenant community of 26 homes.

Mr. Cone died in 1908, but Mrs. Cone survived her husband by nearly 39 years, and

during this time she maintained the park and manor in the way she felt he would have kept it. Both are buried on an open slope of Flat Top Mountain less than a mile north of the manor.

Following the park's inclusion in the Blue Ridge Parkway, the National Park Service restored the trout lake, which had washed out in the 1916 flood, and stocked both it and the bass lake for fishing. Carriage roads and trails were rehabilitated, handicraft demonstrations and sales through a concessions contract with the Southern Highland Handicraft Guild were arranged and a 2.3-mile section of the parkway was constructed—all to make it more accessible and to perpetuate its use as a public "pleasure ground" under the name "Moses H. Cone Memorial Park."



## WHAT TO SEE AND DO

### *Parkway Craft Center*

During the summer, craftsmen of the Southern Highland Handicraft Guild often demonstrate their skills at the Craft Center. Handmade items of mountain craft are displayed and sold here.

### *The Naturalist Program*

From mid-June through Labor Day, the Blue Ridge Parkway offers a program of short nature walks and illustrated evening talks for your information and enjoyment. The

walks, which start from Julian Price Memorial Park Campground and the Craft Center, are led by experienced naturalists. Illustrated campfire programs are held in Price Park Amphitheater on the shore of Price Lake, 3 miles south along the parkway. Consult the Naturalist Program at the Craft Center for a complete schedule of walks and talks.

### *Hiking*

Horse trails and carriage roads in Cone Park lead from the Craft Center to such interesting destinations as Bass Lake, 1 3/4 miles; Trout Lake, 1 mile; Rich Mountain, 4 miles;

and the commanding summit of Flat Top Mountain, 2 1/4 miles. From the southern end of Sims Pond, in Price Park, a lovely trail follows Sims Creek, climbs the ridge to Green Knob, and then leads back to the pond, a distance of 2 miles. Other trails are being developed in both parks under the Mission 66 program of the parkway.

### *Riding*

Riding horses can be rented from stables in nearby Blowing Rock. Trails lead from there to the 20 miles of carriage roads and bridle paths of Cone Park.

### *Fishing*

A North Carolina license is required to fish in the waters of Cone and Price Parks. Trout and Price Lakes are stocked with trout. There is bass fishing in Bass Lake. North Carolina fishing regulations apply except that the trout season ends with Labor Day.

### *Boating*

Rowboats and canoes, without motors or sails, are permitted on Price Lake only. All boats are subject to inspection for durability and safety. Boats must be launched at the launching ramp and removed from the lake at night. They may not be pulled onto the shore at any time.

### *Swimming*

Swimming is prohibited in the parkway lakes, but there is an Olympic-sized pool in Blowing Rock.

### *Camping*

Price Park Campground, 3 miles south, is one of the largest along the parkway, with 81 tent sites and 24 trailer sites. Each site has a table, fireplace, and garbage can. Comfort stations, drinking fountains, and water hydrants are convenient. Use of the campground is free, but there is a 14-day camping limit. Season: May through October.

## ADMINISTRATION

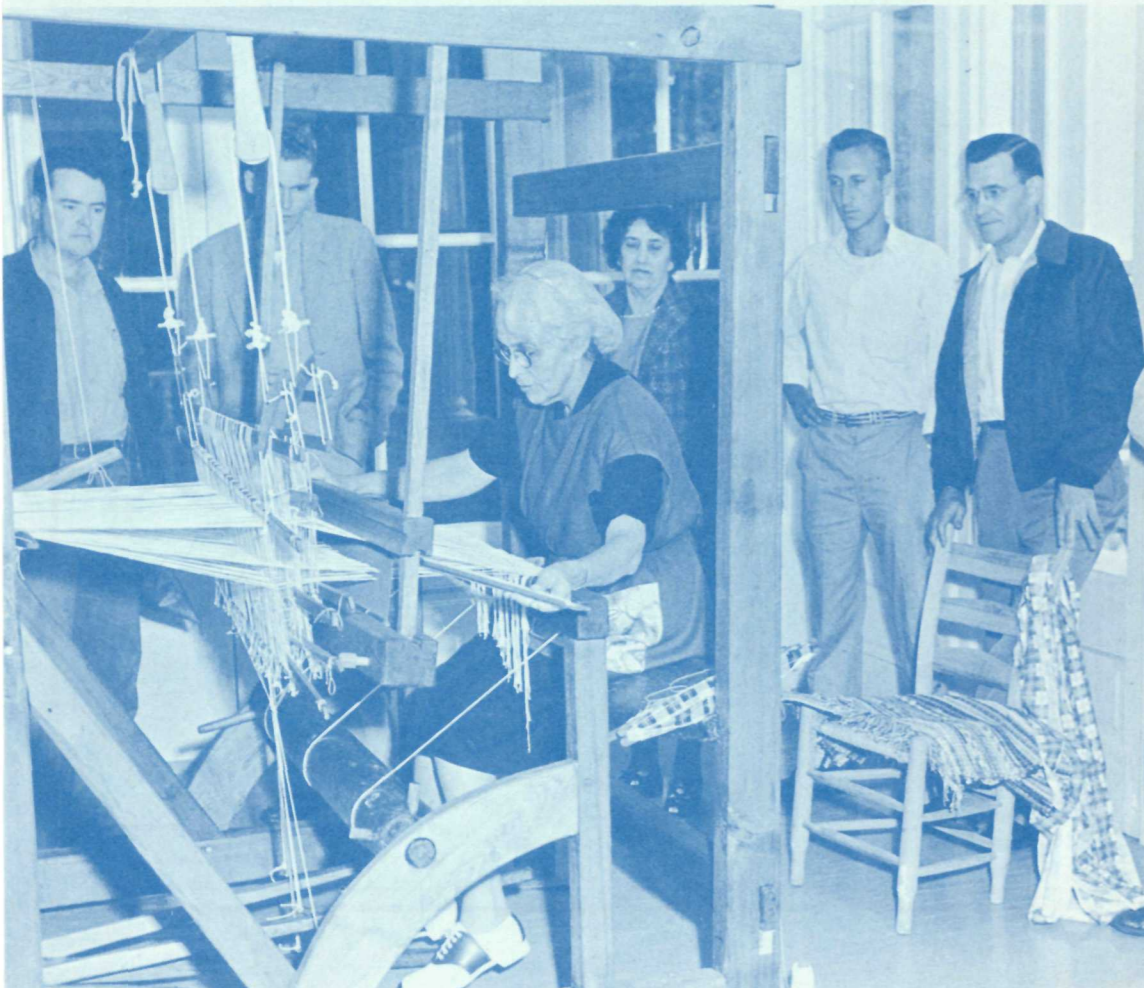
MOSES H. CONE MEMORIAL PARK is maintained and operated as a unit of the Blue Ridge Parkway, which is administered by the National Park Service, U.S. Department of the Interior. For further information about the parkway, write to the Superintendent, Blue Ridge Parkway, P.O. Box 1710, Roanoke, Va.

Created in 1849, the Department of the Interior—America's Department of Natural Resources—is concerned with the management, conservation, and development of the Nation's water, wildlife, mineral, forest, and park and recreational resources. It also has major responsibilities for Indian and Territorial affairs.

As the Nation's principal conservation agency, the Department works to assure that nonrenewable resources are developed and used wisely, that park and recreational resources are conserved for the future, and that renewable resources make their full contribution to the progress, prosperity, and security of the United States—now and in the future.

COVER: Parkway Craft Center.

*Weaving exhibit at the craft center.*



UNITED STATES  
DEPARTMENT OF THE INTERIOR

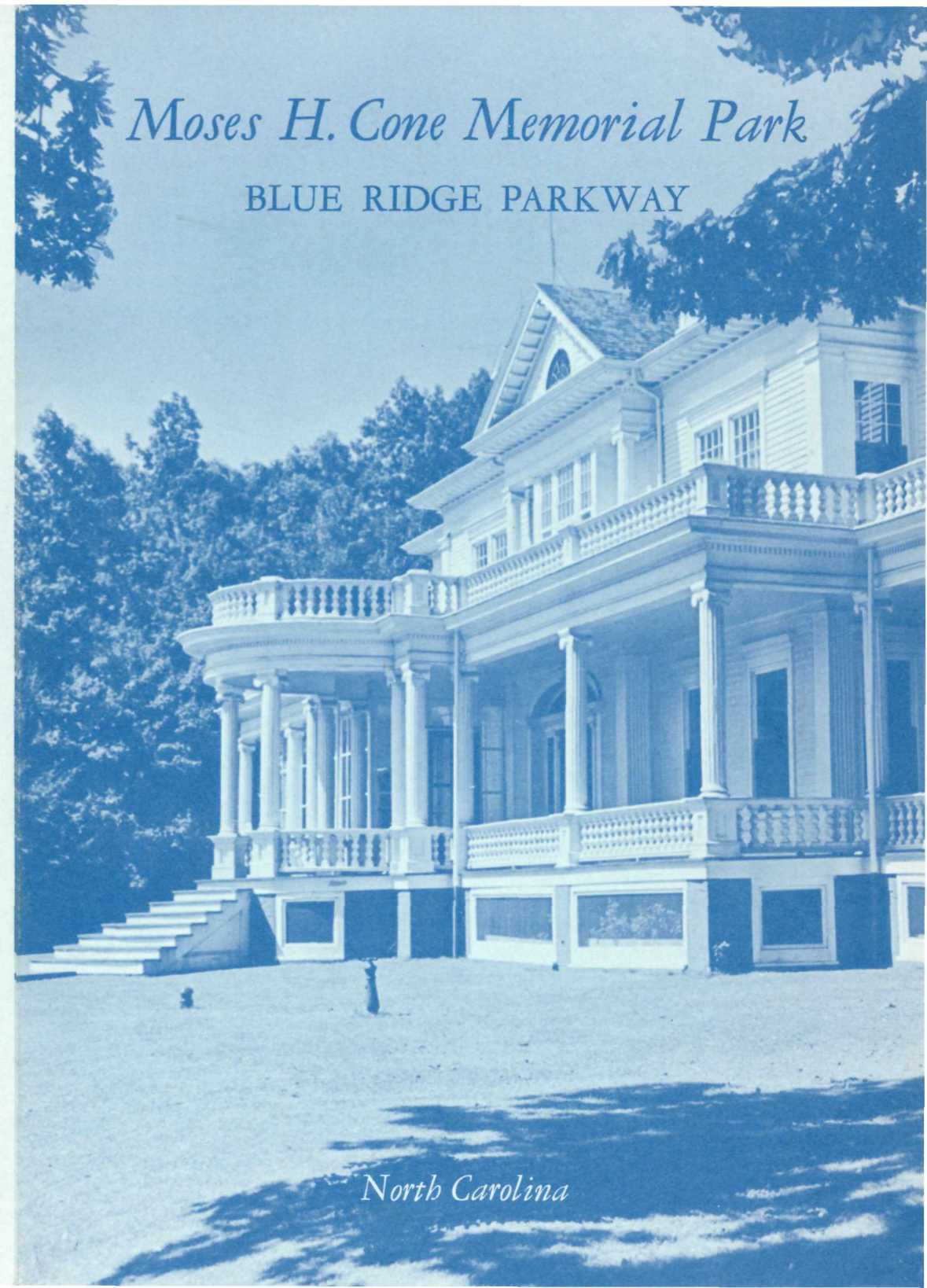
NATIONAL PARK SERVICE



U.S. GOVERNMENT PRINTING OFFICE : 1962 OF-668177

# Moses H. Cone Memorial Park

## BLUE RIDGE PARKWAY



*North Carolina*