

Hiking Guide *Easy, Moderate, or Strenuous*

TRAIL NAME	DISTANCE	ELEV CHANGE	DESCRIPTION
Mossy Cave North end of park, 4 mi east on Hwy 12	0.8 mi 1.3 km	200 feet / 61 meters	Streamside walk up to a mossy grotto that fills with spectacular icicles in winter, and dripping mosses in summer.
Sunset to Sunrise Sunset Point <i>Eastern Walk</i>	1.0 mi 1.6 km	34 feet / 10 meters	Paved portion of Rim Trail; easiest hike in the park with views of the scenic Bryce Amphitheater. 0.5 mi each way.
Rim Trail Walk the rim of the scenic Bryce Amphitheater (not a loop)	1.0-11.0 mi 1.6-17.7 km	1177 feet / 359 meters	Connects one-way from Bryce Point to Fairyland Point. View the hoodoos from above. Trail paved and flat between Sunrise and Sunset Points. Moderate difficulty elsewhere.
Bristlecone Loop Rainbow Point or Yovimpa Point	1.0 mi 1.6 km	200 feet / 61 meters	Hike through sub-alpine fir forests with bristlecone pines and expansive vistas. Pair with the 18-mile scenic drive.
Queen's Garden Sunset Point (not a loop)	1.8 mi 2.9 km	357 feet / 109 meters	The least difficult trail descending into Bryce Amphitheater. Down-and-back hike to Queen Victoria hoodoo.
Navajo Loop Sunset Point <i>Only a loop in summer</i>	1.3 mi 2.2 km	550 feet / 168 meters	See Thor's Hammer along Two Bridges and Wall Street sides of this loop. Wall Street only open in summer.
Queen's/Navajo Combination Loop Sunset / Sunrise Point <i>Most Popular Trail</i>	2.9 mi 4.6 km	600 feet / 183 meters	Combine Queen's Garden & Navajo Loop to form a 2.9-mile loop. Clockwise direction recommended; use two bridges in winter.
Tower Bridge North of Sunrise Point (Portion of Fairyland Loop, not a loop)	3.0 mi 4.8 km	802 feet / 245 meters	See Bristlecone pines and the Chinese Wall. Down-and-back hike to a shady 1.4-mile spur trail leading to the bridge.
Sheep Creek / Swamp Canyon Swamp Canyon Loop	4.0 mi 6.4 km	647 feet / 198 meters	A beautiful hike through a section of the park's quiet backcountry. Less signed than Bryce Amphitheater trails.
Hat Shop Bryce Point (not a loop)	4.0 mi 6.4 km	1075 feet / 328 meters	Descend the expansive Under-the-Rim Trail on a down-and-back hike to see a cluster of balanced-rock hoodoos.
Fairyland Loop Fairyland Point or north of Sunrise Point	8.0 mi 12.9 km	1716 feet / 523 meters	Combine hiking along the plateau rim near Boat Mesa with long views of the Bryce Amphitheater surrounded by unique hoodoos on this quiet hike.
Peekaboo Loop Bryce Point	5.5 mi 8.8 km	1571 feet / 479 meters	Steep, ever-changing hike spent entirely below the rim. See the Wall of Windows. <i>Clockwise direction in summer</i>
Navajo / Peekaboo Combination Loop Sunset Point	4.9 mi 7.8 km	1581 feet / 482 meters	Combine the Navajo Loop and Peekaboo Loop Trails into a mini Figure-8 Combination. Use two bridges both ways in winter.
The Figure-8 Combination Sunset Point	6.4 mi 10.2 km	1631 feet / 497 meters	Combine the Queen's/Navajo Combination and Peekaboo Loop into one ultimate hike! Creates a Figure-8 shape.
Bryce Amphitheater Traverse Bryce Point	4.7 mi 7.5 km	1010 feet / 308 meters	Descend from Bryce Point, turn left (clockwise) on Peekaboo Loop, connect to Queen's Garden and Ascend to Sunrise Point. Use shuttle or 2.7 mi Rim return.

Plan Your Visit

Welcome to Bryce Canyon, home to the largest collection of hoodoos (irregularly-eroded rock spires) in the world! Situated along the east edge of a plateau, the park has one main 18-mile north-to-south road and only one entrance/exit. As you enter the park, all viewpoints and hikes are on the left.

BRYCE AMPHITHEATER (1-3 HOUR VISIT)
The most iconic and popular views of Bryce Canyon are found along the rim of the Bryce Amphitheater: **Bryce, Inspiration, Sunset, and Sunrise Points**. Try to see this area as early in the day as possible. Enjoy a flat, paved walk between Sunset and Sunrise Points (0.5 mi each way) or a more challenging hike below the rim. Most visitors like to begin with the wonderful diversity found along the moderately difficult **2.9-mile Queen's/Navajo Combination Loop** (Hiking Guide above). **Beat the crowds April-October and use the park shuttle to see this area.** The shuttle also allows beautiful one-way walks along the Rim Trail.

SCENIC SOUTHERN DRIVE (4+ HOUR VISIT)
Drive the main road 18 miles (35 min) until it ends at the park's highest elevations at Rainbow and Yovimpa Points. Consider the 1-mile Bristlecone Loop to stretch your legs. Stop at viewpoints like Natural Bridge and Agua Canyon on your return trip north.

MOSSY CAVE (4+ HOUR VISIT)
Located off Highway 12 in the north end of the park, this is the only easy walk that begins below the hoodoos (others remain along the rim or begin along the rim and descend below). See a waterfall in summer and icicles in winter. This area is popular, but is typically least busy in early morning and the evening.

Enjoy Your Park Responsibly

- NO DRONES**
Unmanned aircraft is restricted from use in all national parks, including Bryce Canyon National Park. Violators are subject to legal action and fines in accordance with 36 CFR 1.5. Report drone use to nearest park ranger.
 - LIGHTNING**
If you hear thunder, a storm is within 10 miles, and a strike is possible. The plateau rim is the most dangerous place. Move to a building or vehicle, avoiding trees, hoodoos, and other tall objects. Lightning has claimed 4 lives and injured 6 in the past 25 years at Bryce Canyon.
 - INJURIES**
Ankle injuries from improper footwear, dehydration, falling from off-limits areas, and altitude-related illnesses are the most common emergencies. Winter hikers should use traction devices (available to purchase at Visitor Center).
 - PROTECT WILDLIFE**
Feeding wildlife changes animal behavior, and may result in severe injuries to you or other visitors to this park. Speeding vehicles are the number one killer of park wildlife. Do not feed or approach wildlife, and observe all posted speed limits.
- EMERGENCY:** 800-582-4351 or 9-1-1
NEAREST MEDICAL FACILITY: Garfield Hospital and Clinic is located in Panguitch, UT. Return to Highway 12 and head West 13.6 mi to US-89 N. Travel 6.5 mi to Panguitch and turn right on N 400 E St. **Hospital:** 435-676-8811

Ranger Programs and Activities

Online schedule at www.nps.gov/bcra/planyourvisit/calendar.htm

- RANGER PROGRAMS**
Ranger talks and walks are provided every day. All ranger programs are free, and require no reservations. Outdoor programs are weather dependent and may be cancelled due to inclement weather, such as lightning within 8 miles and temperatures below 10 F/-12 C. Additional programs may be added to those below. Check our schedule online (see above) or at the Visitor Center.
 - MEMORIAL DAY - SEPT 30 - "SUMMER SEASON"**
Daily 11 a.m. 20 min **Geology Talk** Sun-Wed 8 p.m. 45 min **Evening Program** at Lodge
Daily 1 p.m. 75 min **Rim Walk** Thu-Sat 9 p.m. 45 min **Astronomy Program** at North
Daily 2 p.m. 20 min **Geology Talk** Campground Amphitheater
Daily 4 p.m. 75 min **Rim Walk** Thu-Sat 10 p.m. 90 min **Telescopes** at Visitor Center
 - OCT 1 - MEMORIAL DAY - "WINTER SEASON"**
Daily 11 a.m. 20 min **Geology Talk** Daily 2 p.m. 20 min **Geology Talk** *
Daily 1 p.m. 75 min **Rim Walk** or 2 hr **Snowshoe Hike** Saturday Varies 90 min **Telescopes** at Visitor Center
(Depends on winter staffing, check at Visitor Center or online)
 - *Meets at Sunset Point
 - GEOLGY AND ASTRONOMY FESTIVALS**
Annual festivals feature renowned guest speakers, special ranger programs, and more. The Astronomy Festival occurs in June, and the Geology Festival occurs in July each year. See our website at www.nps.gov/bcra for more information.
 - BECOME A JUNIOR RANGER**
Visitors of all ages are welcome to participate. Please allocate 3-6 hours of your visit to this experience. See Visitor Center for free materials (pencils not provided) and instructions on completing the Jr. Ranger booklet. This is a great activity to pair with our Hike the Hoodoos program! See below for more information. Family programs are often offered in the summer season. See schedule in the Visitor Center or by visiting our website.
 - FULL MOON HIKES**
Hikes are by lottery only. Lotteries begin at 4 p.m. and are held at the Lodge April through October, and the Visitor Center from November through March. All members of the group must be present at the lottery and bring the footwear they plan to wear. Untreaded soles, such as tennis shoes or sandals, are not permitted. See our website for annual hike dates. Ages 8+.
 - SNOWSHOE HIKES, X-COUNTRY SKIING, & SAFETY**
Snowshoe programs are offered when snowpack and staffing allow. Hikes are typically 1.5 miles/2 hours, are limited to 25 people ages 8+ with winter boots. Snowshoes are provided. Sign up day-of at the Visitor Center. Cross-country skiing is permitted in all areas of the park except beneath the rim. Obtain a map of groomed and ungroomed trails at the Visitor Center. Snowshoes, skis, & more can be rented at Ruby's Inn Winter Adventure Center.
- The park can be extremely icy in winter and traction devices are strongly recommended for those visiting the park, and especially those planning to hike. Traction devices can be purchased in the Visitor Center bookstore.

Things to Do

- HIKING**
Bryce Canyon has approximately 60 miles of trails to explore, and every single one will show you a unique side of this park. Refer to the Hiking Guide on the opposite page. Protect this delicate landscape by always staying on trail. Walking off-trail in park meadows is not permitted. Remember appropriate footwear and water.
- PETS IN THE PARK**
Pets are only allowed on paved areas, including park viewpoints, the Shared-Use Path, the Rim Trail between Sunset and Sunrise Points, and park campgrounds. Pets must always be leashed, and cleaned up after. Pets are not allowed on any unpaved hiking trails.
- BACKCOUNTRY CAMPING**
Areas include the 9-mile Riggs Spring Loop, and the 23-mile Under-the-Rim Trail. Fees are \$5/person. Backcountry permits are issued on a first-come, first-served basis at the Visitor Center up to 48-hours in advance. Sites limited to 6 campers. 2 group sites available with a limit of 15 per night. Maps available at the Visitor Center and park website.
- HORSEBACK RIDING**
Wrangler-led trail rides are provided within the park Spring-Fall and range \$65 to \$90 dollars for 1.5 to 3 hr rides. Inquire at the Bryce Canyon Lodge or call 435-834-5500. The use of privately-owned stock is permitted. Please e-mail us at bcra_horserides@nps.gov at least 72 hours in advance to schedule a reservation inspection for your stock.
- NIGHT SKIES**
All viewpoints present a spectacular view of the night sky. In August of 2019, the NPS and the International Dark-Sky Association announced Bryce Canyon as an International Dark Sky Park, recognizing the exceptional quality of the park's night skies and promoting astronomy programming and outdoor lighting upgrades. More at www.darksky.org

"I Hiked the Hoodoos" Program

Hiking is great exercise and Bryce Canyon's "I Hiked the Hoodoos" program is not just hiking, it's also a scavenger hunt with a special reward!

- In order to qualify for the reward, hike a minimum of 3.0 miles, or find at least 3 benchmarks and complete steps 2 through 4 below.
- Each individual must have either a pencil rubbing of the benchmark (see Jr. Ranger Book) or a "selfie" with the benchmark.
- Only special "I Hiked the Hoodoos" benchmarks qualify for the reward. USGS benchmarks found at various locations within the park do not qualify.
- Rewards are available at the Visitor Center, so bring your photos or pencil rubbings to the front desk!

Benchmark	Distance miles	Distance km
Mossy Cave	0.8	1.3
Rim Trail	2.5	4.0
Tower Bridge	3.0	4.8
Queen's Garden	1.8	2.9
Navajo Loop	1.3	2.2
Peekaboo Loop	2.4	3.9
Wall of Windows	1.6	2.6
Sheep Creek	4.0	6.4
Bristlecone Loop	1.0	1.6

Check out the Hiking Guide on the front of this Visitor Guide for help choosing an appropriate hike for your group!

Bryce Canyon Natural History Association

Supporting Bryce Canyon since 1961

The Bryce Canyon Natural History Association (BCNHA) supports education, research, infrastructure, and unique programs for the benefit of Bryce Canyon National Park. Combined with sales from our bookstore, BCNHA has provided over \$9 million dollars of support to this world-renowned natural resource and the experience of its visitors.

Consider becoming a dedicated friend of Bryce Canyon National Park today!

What Members mean to this Park...

By becoming a member of the BCNHA you'll receive a 15% discount in BCNHA stores, a one-time free gift, and discounts at most cooperating association bookstores in national parks and public lands across the country.

Your tax-deductible dues will then directly support beloved programs in the park.

Visit our website or the Visitor Center bookstore to see how you can help support:

- The Junior Ranger Program
- This Visitor Guide and other free publications
- The Geology Festival, Astronomy Festival and other special events
- Supports internships and education initiatives both within and outside the park
- Public interpretive programs and collegiate internships each summer
- Research and training for park staff on the geology of the Colorado Plateau

The Lodge at Bryce Canyon and Ruby's Inn have implemented a \$1 Donation Program: Hotel guests can donate a dollar to the park each night of their visit. Since 2004 over \$900,000 has been contributed to fund seasonal employees and visitor services.

Visit Us and Shop Online: www.brycecanyon.org or call at 888-362-2642

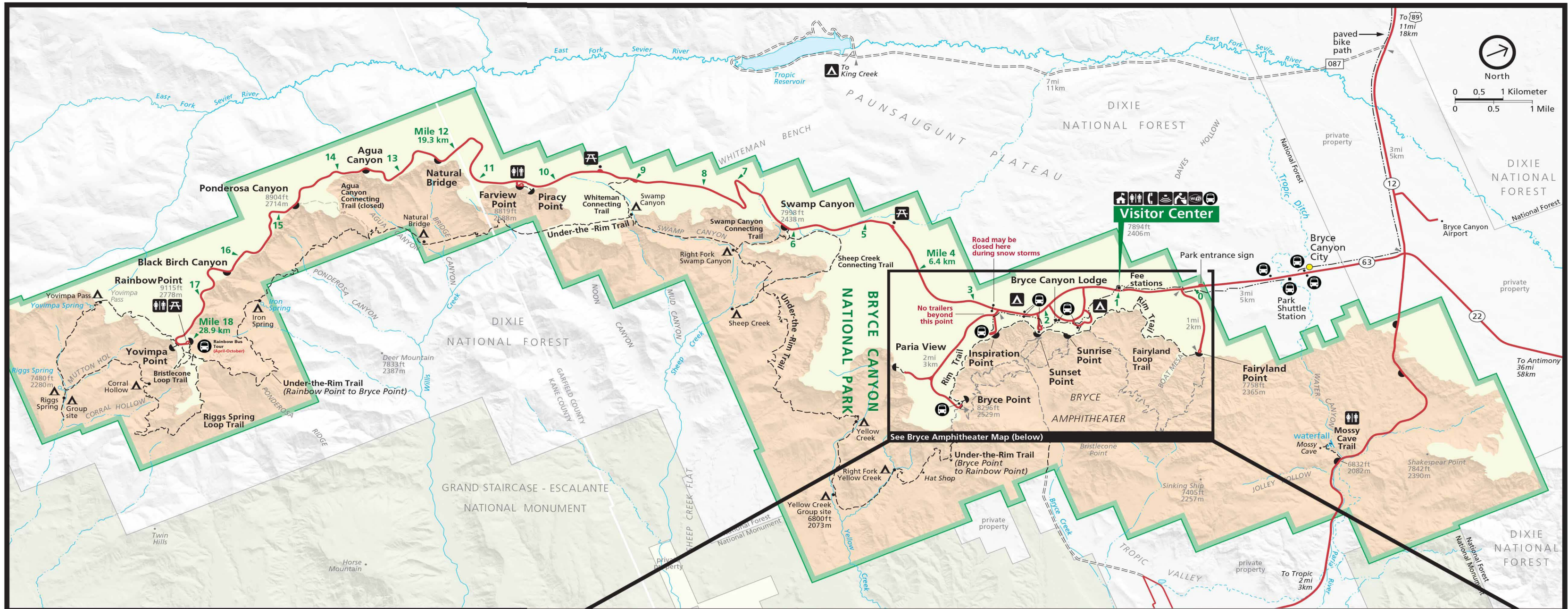
YOU CAN HELP US GROW

BECOME A MEMBER TODAY, RECEIVE 15% OFF YOUR PURCHASE AND A FREE GIFT

YOUR SUPPORT WILL HELP US PRESERVE AND PROTECT BRYCE CANYON NATIONAL PARK

Purchases from the Visitor Center bookstore directly support the park

Bryce Canyon Visitor Guide



Scenic Areas

Rainbow Point Mile 18 29 km

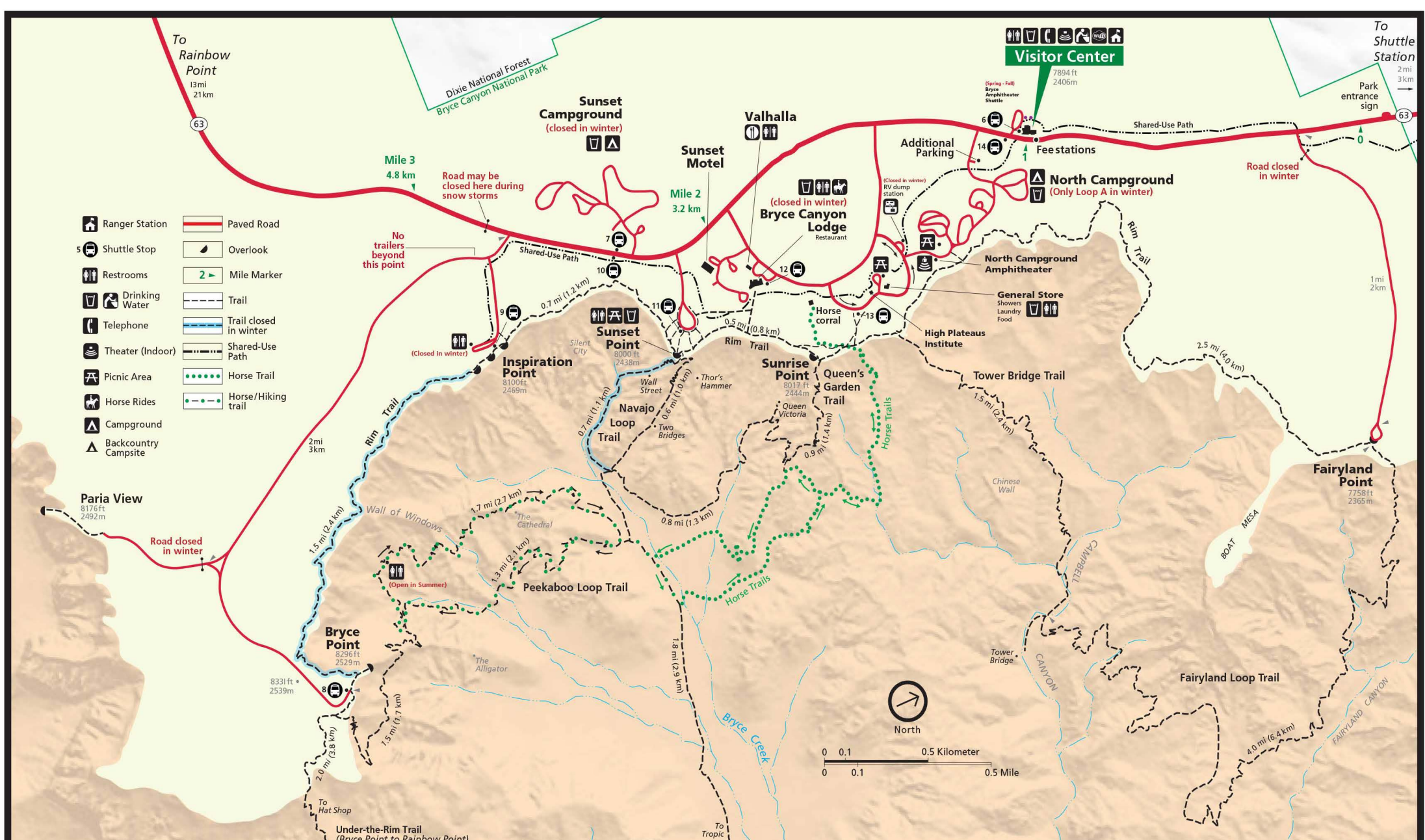
Bryce Amphitheater Miles 1-3 1.6-4.8 km

Natural Bridge Mile 12.5 20 km

Mossy Cave 4 mi/6.4 km east on Highway 12

Want to see it all? Read "Plan Your Visit" section

Bryce Amphitheater (Enlarged)



Shuttle System April through October

Want to know when the next shuttle arrives? Check out the shuttle tracker app at brycecanyonshuttle.com

BRYCE AMPHITHEATER SHUTTLE
Shuttle is free with admission. We recommend boarding at the Shuttle Station, Visitor Center, your campground or hotel. Create unique one-way hikes, and connect viewpoints together by walking along the Rim Trail. Shuttles arrive every 10-15 minutes. Runs 8 a.m. to 6 p.m. with extended hours to 8 p.m. in summer.

RAINBOW BUS TOUR
A free twice-daily tour along the 18-mile scenic drive. Reservations can be made up to 48 hrs in advance by calling the shuttle station. Approximately 3 hours long. Shuttle Station: (435) 834-5290. Departs 9 a.m. and 1:30 p.m.

BRYCE AMPHITHEATER SHUTTLE ROUTE

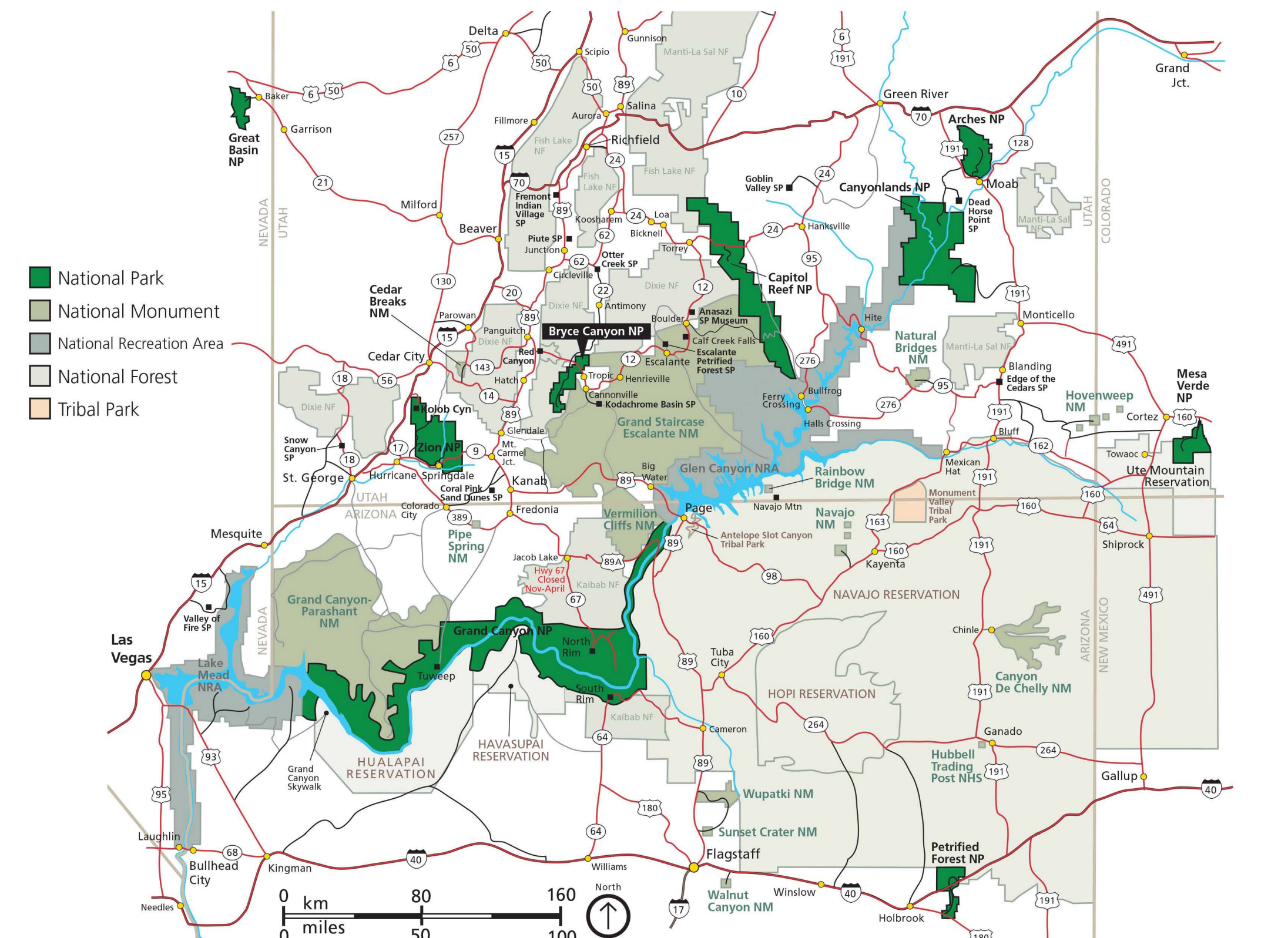
During shuttle hours, vehicles 20 ft / 6 m or longer are restricted from parking in the Bryce Amphitheater shuttle service area (Sunrise, Sunset, Inspiration, Bryce, and Paria Viewpoints, as well as the Lodge and Visitor Center). Park at shuttle station, the additional parking lot across the main road from Visitor Center, or your campsite (shuttle services both Ruby's Inn Campground and North & Sunset CG areas within the park).

Services

For additional local services such as food, lodging, and more in the local area visit www.brycecanyoncountry.com

- LODGING**
The Lodge at Bryce Canyon is open Spring-Fall. Winter lodging is available at the Sunset Motel. Reservations: (435) 834-8700 or visit brycecanyonforever.com. See above for local options.
- RESTAURANTS**
Spring - Fall, the Lodge at Bryce Canyon offers a full menu. The General Store offers basic groceries. Valhalla offers pizza, coffee, and a basic menu.
- PICNIC AND GRILL AREAS**
Available at Sunset Point, N. Campground (with grills), General Store, mile 4.5, Whiteman Bench, and Yovimpa Point.
- LAUNDRY**
Available Spring-Fall at the General Store. Winter facilities at Ruby's Inn.
- MONEY**
An ATM is available at the Lodge at Bryce Canyon and at Ruby's Inn General Store.
- GIFT SHOPS AND PENNY MACHINES**
Gift Shops at Visitor Center and the Lodge at Bryce Canyon. Penny machines found at the General Store and Ruby's Inn General Store.
- RESTROOMS**
Available at the Visitor Center, N. Campground, Mossy Cave, Sunset, Fairview, Rainbow Points. In summer at Inspiration Point, Peekaboo Loop.
- POST OFFICE**
Dropbox mailbox is located at the Visitor Center. Post Office at Ruby's Inn is open Mon to Sat. Stamps available at the Visitor Center.
- SHOWERS**
Showers are available Spring-Fall at the General Store. Winter facilities at Ruby's Inn.
- WIFI**
Public WiFi connection available at the Visitor Center.
- FIREWOOD**
Available at the General Store and Ruby's Inn General Store. Collecting firewood in the park is not permitted.

Regional Map



ROAD CONDITIONS
Current Utah Road Conditions: utahcommuterlink.com
Call or visit Parks or Agencies for internal roads.

AVERAGE DRIVE TIMES (HOURS)

Cedar Breaks NM (via UT-89 & I-70)	1 1/4	Las Vegas	4
Arches NP (via UT-12)	4 1/2	Page, AZ	3
Capitol Reef NP (via UT-12)	2 1/2	Salt Lake City	4 1/2
Canyonlands (N. Ent. 89 & 70)	4 1/2	Grand Canyon NP (North Rim)	3
		Grand Canyon NP (South Rim)	5
		Zion NP (East Entrance)	1 1/2
		Zion NP (West Entrance)	2 1/2

Connect with Your Park

- SUPERINTENDENT**
Linda Mazzu
- MAILING ADDRESS**
PO Box 640201
Bryce, UT 84764-0201
- PARK INFORMATION**
435-834-5322
- WEBSITE**
www.nps.gov/bcra
- SOCIAL MEDIA**
www.facebook.com/brycecanyonnps
www.instagram.com/brycecanyonnps
www.twitter.com/brycecanyonnps
www.youtube.com/brycecanyonnps
- E-MAIL (LOST AND FOUND)**
bcra_information@nps.gov
- EMERGENCIES**
435-582-4351 or 9-1-1
- REPORTING FIRES**
Locate a park ranger to report fires. Observed fires are often controlled burns. **Wildland Fire Reporting: 435-865-4611**
- LEAVE A COMMENT**
We want to hear how our staff, facilities, and partners contributed to your experience. Comment forms are available at the front desk at the Visitor Center. Alternatively, send us an e-mail, find us on social media, or call.
- BECOME A VOLUNTEER**
Volunteers work with park employees to preserve park resources, play a vital role in educating and engaging our visitors, and to live in one of the world's most beautiful environments. Call the park at 435-834-5322 or e-mail_bcra_information@nps.gov
- WORK WITH THE NATIONAL PARK SERVICE**
The National Park Service doesn't just hire rangers. We employ mechanics, museum curators, data analysts, landscape architects, engineers, educators, law enforcement and more. All job vacancies are posted on USAJobs.gov
- YOUR FEE DOLLARS AT WORK**
Learn more about how Bryce Canyon and other parks use your fee dollars at: <https://www.nps.gov/aboutus/fees-at-work.htm>