

### National Park Service Riding Rules:

- PWCs must remain at least 150 feet from the shore except when landing at one of the ten (10) designated sound- side landing zones.
- PWCs must operate at flat wake (no wake) speed within one of the designated landing zones and come directly to the shore.
- PWCs may not land on the ocean beach within Cape Lookout National Seashore's boundaries.
- PWCs must also adhere to the State of North Carolina rules for operation.



This PWC is operating at flat -wake speed

### Please ride courteously:

North Carolina PWC riding law requires that --

- PWCs must be operated at all times in a reasonable and prudent manner. Manuevers that endanger people or property constitute reckless operation\*\*.
- Within 100 feet of an anchored or moored vessel, a dock, pier, swim float, marked swimming area, swimmers, surfers, anglers or any manually propelled vessel, a PWC must travel at no-wake speed.

#### \*\* Reckless Operation Includes:

- Unreasonable or unnecessary weaving through congested boat traffic
- Jumping the wake of a vessel within 100 feet of the vessel or when visibility is obstructed
- Intentionally approaching a vessel in order to swerve at the last moment
- Operating contrary to the "rules of the road"
- Following too closely to another vessel, including another PWC

### For more information:

- on PWC use around the islands of Cape Lookout National Seashore see our website at: [www.nps.gov/caloc](http://www.nps.gov/caloc) or give us a call at: (252) 728-2250
- on North Carolina's PWC riding law: a summary of the law may be found on the North Carolina Wildlife Resources Commission website at: <http://www.ncwildlife.org/>

National Park Service  
U.S. Department of the Interior

Cape Lookout National Seashore  
North Carolina



## Personal Watercraft Use at Cape Lookout National Seashore



### Rider Information

*PWCs are allowed to land at ten (10) designated sound-side access locations on the islands of North Core Banks, South Core Banks and Shackleford Banks.*

The designated PWC access zones are described in this brochure and will be marked by signs.



A green circle means its okay to land.

A red circle with a slash means this area is closed to PWCs.

Note: Please watch out for temporary wildlife closures on sound-side beaches within the PWC access zones. These temporary closures may occur near inlets or along the spit for short periods from April to August.

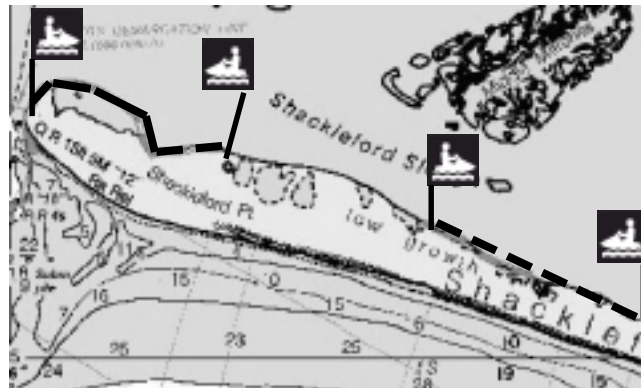
### National Park Service PWC Access Zones:

#### North Core Banks:

- Ocracoke Inlet from Wallace Channel Dock to the demarcation line in Ocracoke Inlet near milepost #1
- Milepost #11B at existing sound-side dock approximately 4 miles north of Long Point
- Long Point at the ferry landing in the Long Point Cabin area
- Old Drum Inlet -- 50 foot area designated by signs near milepost #19 about 1/2 mile north of the inlet

#### Shackleford Banks

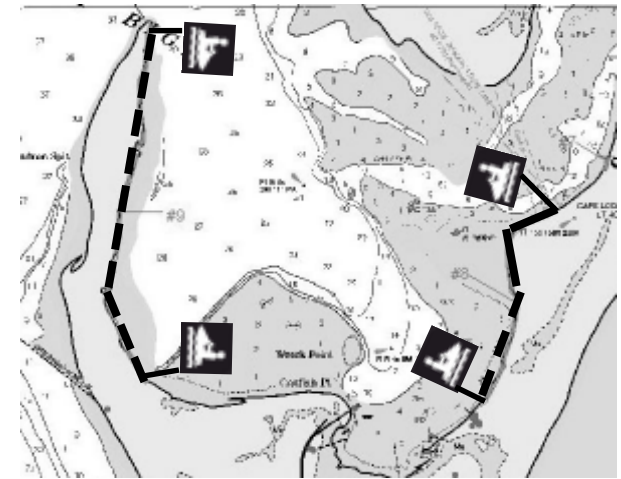
- West End Access -- Sound-side beach from Whale Creek west to Beaufort Inlet, except the area between Wade Shore's toilet facility and the passenger ferry dock



Shackleford Banks landing areas

#### South Core Banks

- New Drum Inlet -- 1/4 mile long sound-side beach as designated by signs near milepost #23; area is about 1/2 mile south of New Drum Inlet.
- Great Island near milepost #30, northern dock known as the Carly Dock
- Lighthouse Area North -- A zone 300 feet north of the lighthouse ferry dock near milepost #41
- Lighthouse Area South -- From 100 feet south of the Summer Kitchen, along the sound-side beach to 200 feet north of the Cape Lookout Environmental Education Center Dock (formerly known as Les & Sally's)
- Power Squadron Spit -- Sound-side beach across from the rock jetty to the end of the spit



Cape Lookout Bight landing areas