



### Fort Jones/Overlook Trail (1.2 miles)

More adventurous hikers can continue along this trail through the woods to Fort Jones and the two Stone Forts. Fort Jones, with its extensive stone revetment walls, is one of the best-preserved Civil War forts in Kentucky.



The Stone Fort overlook (another Boy Scout project) also affords a breathtaking view of the Hickman Creek Valley and the Hickman Creek Nature and Conference Center, which is available to rent for various functions.



*Graveyard No. 1, along the Fort Putnam trail.*



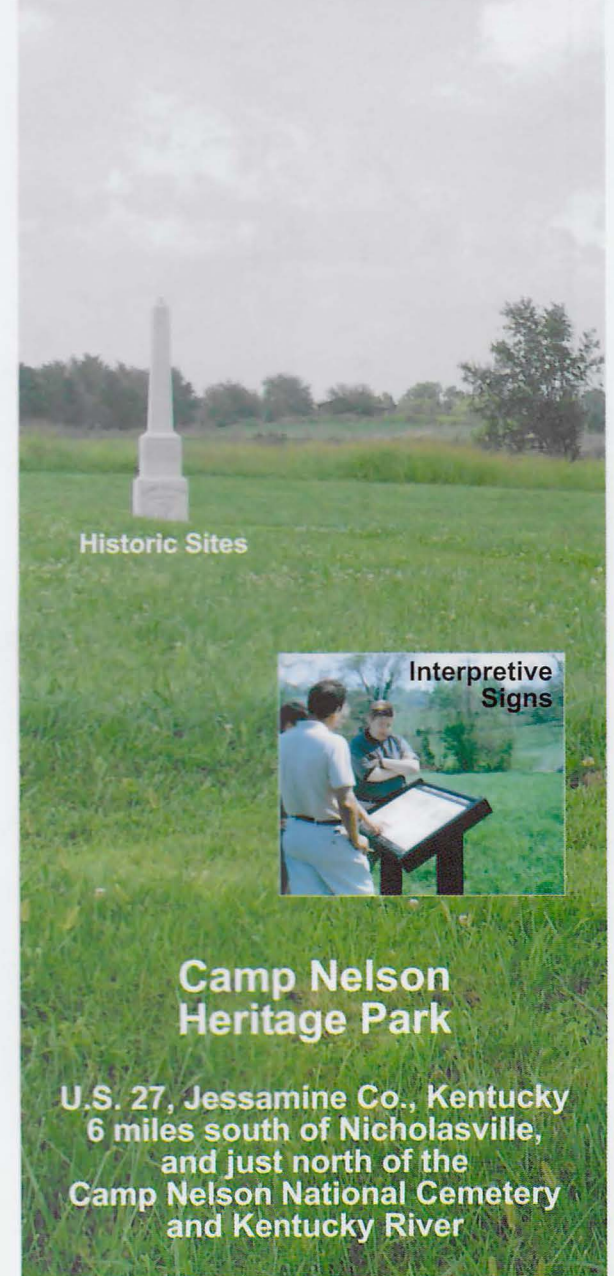
*Entrenchment along the Fort Trail.*

Call (859) 881-5716  
or visit our web site  
for more history and event information.  
[www.campnelson.org](http://www.campnelson.org)

Trail development funded by:  
Kentucky Governor's Office for  
Local Development  
National Recreational Trails Program  
Kentucky Heritage Land Conservation Fund

# CAMP NELSON

## INTERPRETIVE TRAILS GUIDE



Historic Sites



Interpretive  
Signs

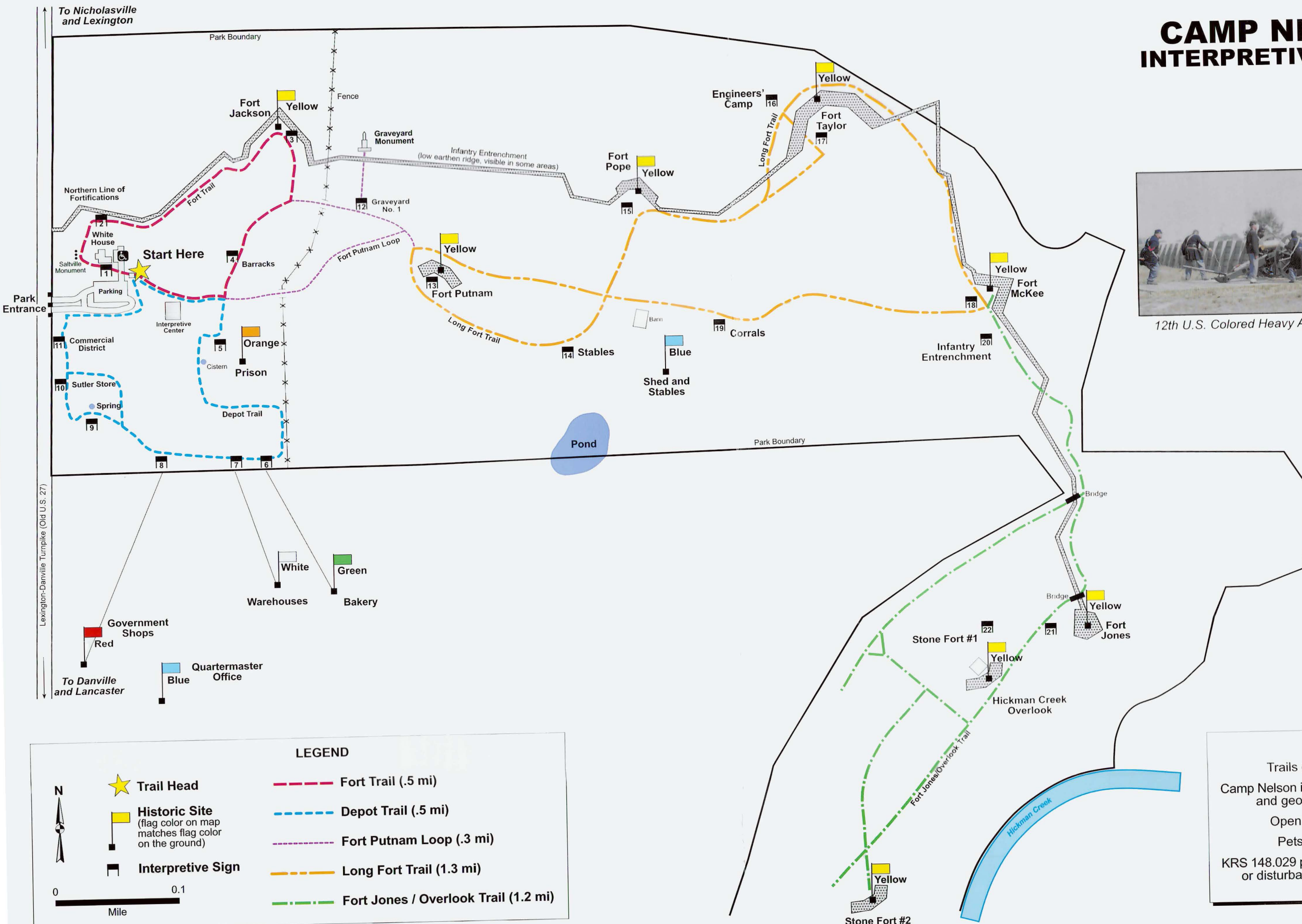
### Camp Nelson Heritage Park

U.S. 27, Jessamine Co., Kentucky  
6 miles south of Nicholasville,  
and just north of the  
Camp Nelson National Cemetery  
and Kentucky River

# CAMP NELSON INTERPRETIVE TRAILS

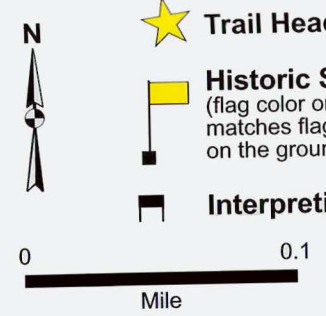


12th U.S. Colored Heavy Artillery at Fort Putnam



**LEGEND**

<b>Trail Head</b>	<b>Fort Trail (.5 mi)</b>
<b>Historic Site</b> (flag color on map matches flag color on the ground)	<b>Depot Trail (.5 mi)</b>
<b>Interpretive Sign</b>	<b>Fort Putnam Loop (.3 mi)</b>
	<b>Long Fort Trail (1.3 mi)</b>
	<b>Fort Jones / Overlook Trail (1.2 mi)</b>

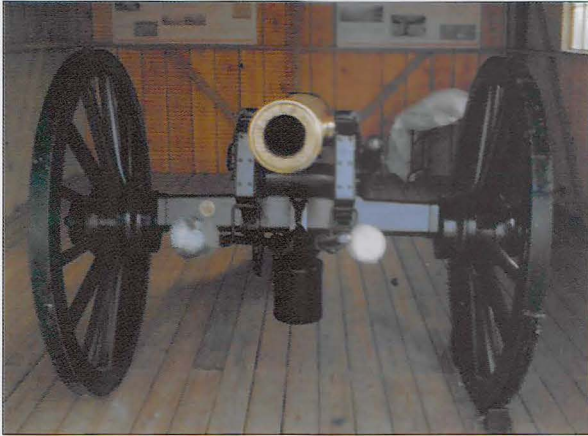


**RULES:**

- Trails open dawn to dusk.
- Camp Nelson is a protected archaeological and geological recovery area.
- Open fires not permitted.
- Pets must be leashed.
- KRS 148.029 prohibits the collection, harm, or disturbance of plants or animals.

# Trails at Camp Nelson

The trails of Camp Nelson Civil War Heritage Park provide visitors an opportunity to view this beautiful central Kentucky landscape and to learn about the significant role Camp Nelson played in the Civil War. Camp Nelson was one of the U.S. Army's largest enlistment centers for African-American soldiers as well as a refugee camp for African-American civilians. It was also one of Kentucky's largest supply depots and hospitals. Interpretive signs at the Trail Head and along the four miles of trails explain the site's fascinating history.



## ★ Trail Head

Visitors should begin their tour at the Trail Head (former buggy shed) located just northeast of the parking lot (see star on map). Here interpretive signs present an overview history of Camp Nelson.



Near the trail head is the White House, a restored antebellum house which served as officers' quarters during the Civil War. It is open for tours Tuesday-Saturday, 10 a.m. - 5 p.m.



## The Fort Trail (0.5 miles)

Visitors can enter this meadow trail from the north side of the White House, or from just north of the prison site, and view infantry entrenchments and one of the earthen forts (Fort Jackson) built to protect this camp. The fortification barracks is also interpreted on this trail.



## The Depot Trail (0.5 miles)

This meadow trail begins at the Trail Head or the White House, which was officers' quarters, and extends southward toward sites associated with the supply function of the camp, such as the warehouses, government shops, and bakery, and sites with more specialized functions, such as the merchants' row and the prison. This trail also passes by the officers' spring with its dry-laid limestone retaining walls and footbridge built as a Boy Scout project. The well-preserved and scenic springs, sink holes, caverns, and geologic faulting of Camp Nelson have led the area to be designated Kentucky Distinguished Geologic Site No. 2 by the Kentucky Geological Survey.



## Fort Putnam Loop (0.3 miles)

One of the forts, Fort Putnam, has been reconstructed following archaeological excavations so that visitors can experience the Civil War appearance of these forts. Graveyard No. 1, where numerous civilian refugees are buried, is also interpreted and memorialized along this trail.



## Long Fort Trail (1.3 miles)

East of Fort Putnam, three more fortifications and the sites of the engineers' quarters and the camp's corrals and stables can be viewed along this trail through meadowlands. The engineer battalion was responsible for the design and construction of the fortifications. Camp Nelson was also a major horse and mule supply and rehabilitation center with facilities for 14,000 animals.