



SEASONAL PERMITS are granted to civic, social, and religious organizations from June to September and are subject to approval by the Superintendent, National Capital Parks.

SHORT-TERM PERMITS are available to the same types of groups for one to six day periods from April to June and from Labor Day to November. The minimum required attendance for short-term use is 25 persons.

Applications for short-term permits will not be accepted or processed until after January 1st of the year in which they are to be used.

A fee of 50 cents per person is charged for overnight use and 25 cents per person is charged for day use.

No fee is required for persons using the roads and trails of the park.

Applications for all organized camping permits must be submitted in writing to: The Park Manager, Catoctin Mountain Park, Thurmont, Maryland.

#### Tent Camping and Picnicking

Facilities for tent camping and picnicking are available in the adjoining Cunningham Falls State Park. For information, write to: The Superintendent, Cunningham Falls State Park, Thurmont, Maryland.

#### Hiking

Several of the park's higher summits, commanding excellent views of the scenic countryside, may be reached by the area's 10 miles of hiking trails. These trails offer great opportunities for hikers, photographers, artists, nature students, and those wishing to enjoy the quiet atmosphere of the forest

#### Fishing

Trout are in season in Big Hunting Creek and Owens Creek from April 15 to March 15. A Maryland fishing license is required, and regulations are set to conform with those of the Maryland Inland Game and Fish Commission.

Detailed information and fishing regulations may be acquired from Thurmont merchants selling sporting goods and equipment or from the Maryland Inland Game and Fish Commission, Baltimore 2, Maryland.

#### Interpretive Services

Organized groups of visitors to the park may arrange for the services of the Park Naturalist who is available throughout the year for interpretive activities. Appointments should be made in advance by writing or calling Park Headquarters.

A self-guiding nature trail is also available to the public starting at the park's main road and proceeding one-half mile to Hog Rock. This trail is designed to introduce the visitor to a few of the natural features of the area.

#### LOCATION

The park is located 60 miles west of Washington, D. C. The main entrance is on State Route 77, three miles west of Thurmont, Maryland. Thurmont is on U. S. Highway 15 between Frederick, Maryland and Gettysburg, Pennsylvania.



#### ADMINISTRATION

Catoctin Mountain Park is a unit of National Capital Parks, National Park Service, United States Department of the Interior.

If you desire further information regarding the park, you may call at the park's office located three miles west of Thurmont, Maryland on State Route 77, or you may telephone Smithsburg, Vandyke 4-3821. You may also write to:

The Park Manager  
Catoctin Mountain Park  
Thurmont, Maryland



#### MISSION 66

Mission 66 is a long-range program designed to assure maximum protection to the scenic, historic, and scientific resources of all areas within the National Park System and to make them more available for use by present and future generations. Improvements in the park are a part of this plan which is to be completed in 1966.

The National Park System, of which National Capital Parks is a unit, is dedicated to conserving the scenic, scientific, and historic heritage of the United States for the benefit and inspiration of its people.

UNITED STATES DEPARTMENT OF THE INTERIOR



Stewart L. Udall, Secretary

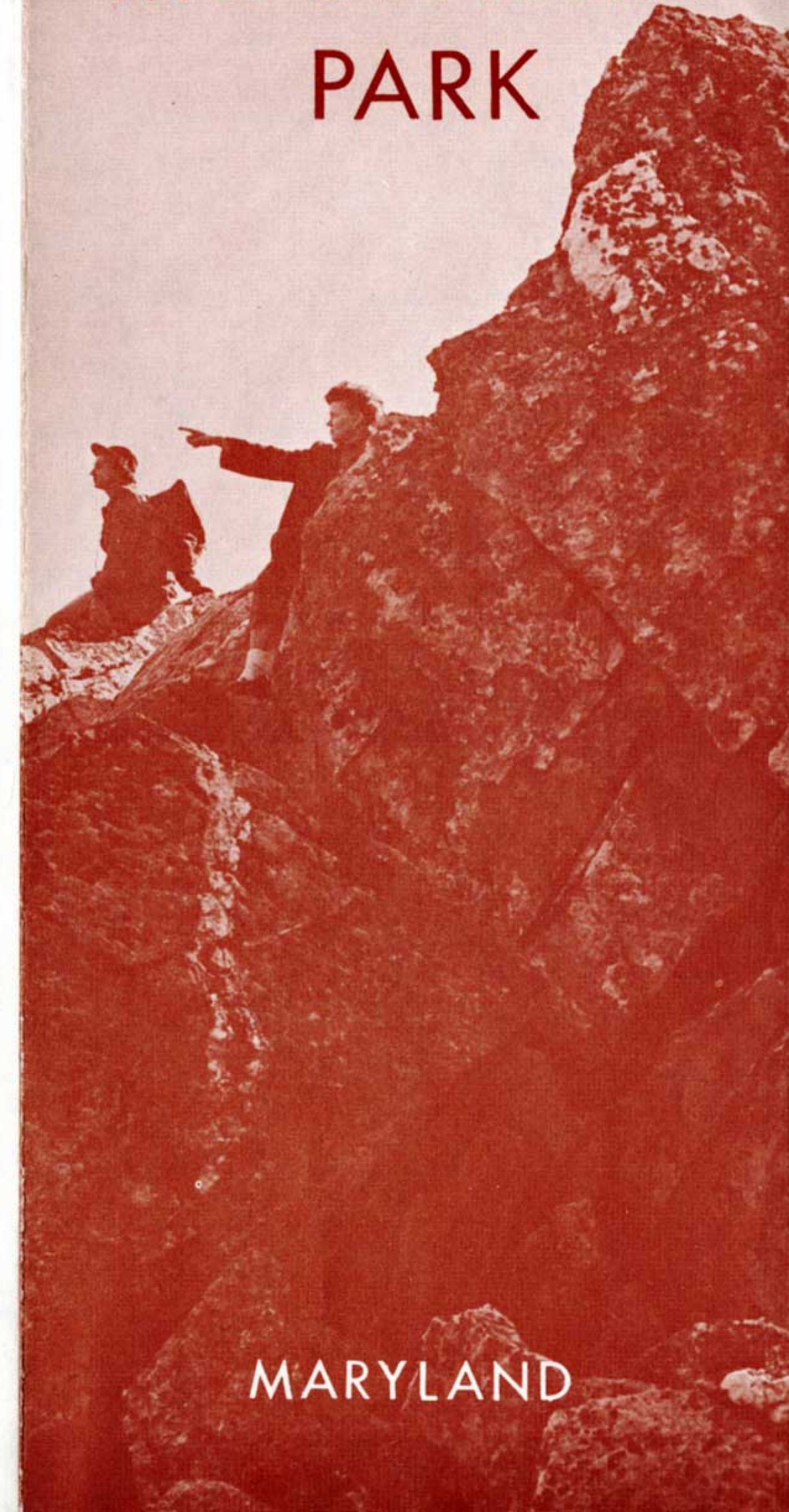
NATIONAL PARK SERVICE

Conrad L. Wirth, Director



INT. DUP., D.C. 64-48421

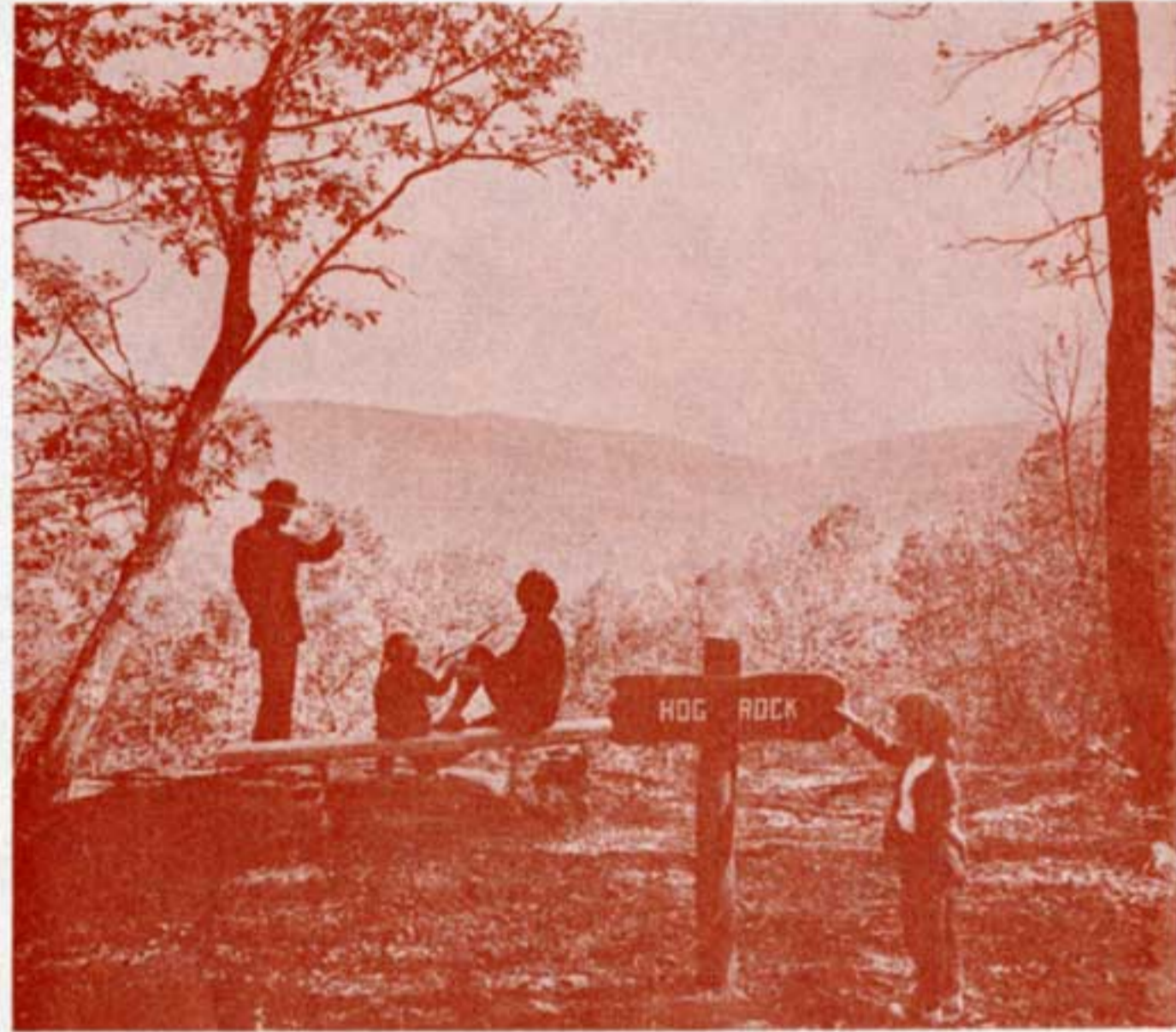
# CATOCTIN MOUNTAIN PARK



MARYLAND

# Catoctin Mountain Park

Welcome to Catoctin Mountain Park. We hope that your contact with the quiet beauty of this area will be a satisfying experience. By using the park with consideration, you may take pride in the knowledge that you are protecting it for the enjoyment of future generations.



## NATURAL FEATURES

Ranging in elevation from 700 to 1,890 feet above sea level, the park's 5,746 acres are on the easternmost ridge of Maryland's Appalachian Province.

The forest, covering approximately 95 per cent of the park's mountainous terrain, varies widely according to past use and present growing conditions. Black Locust trees are abundant in old pasture and field areas abandoned in the early 1930's. Oak, Hickory, and Maple trees dominate the hillsides. Beeches and Hemlocks are seen along the streams, while Pitch Pine is found in the higher elevations.

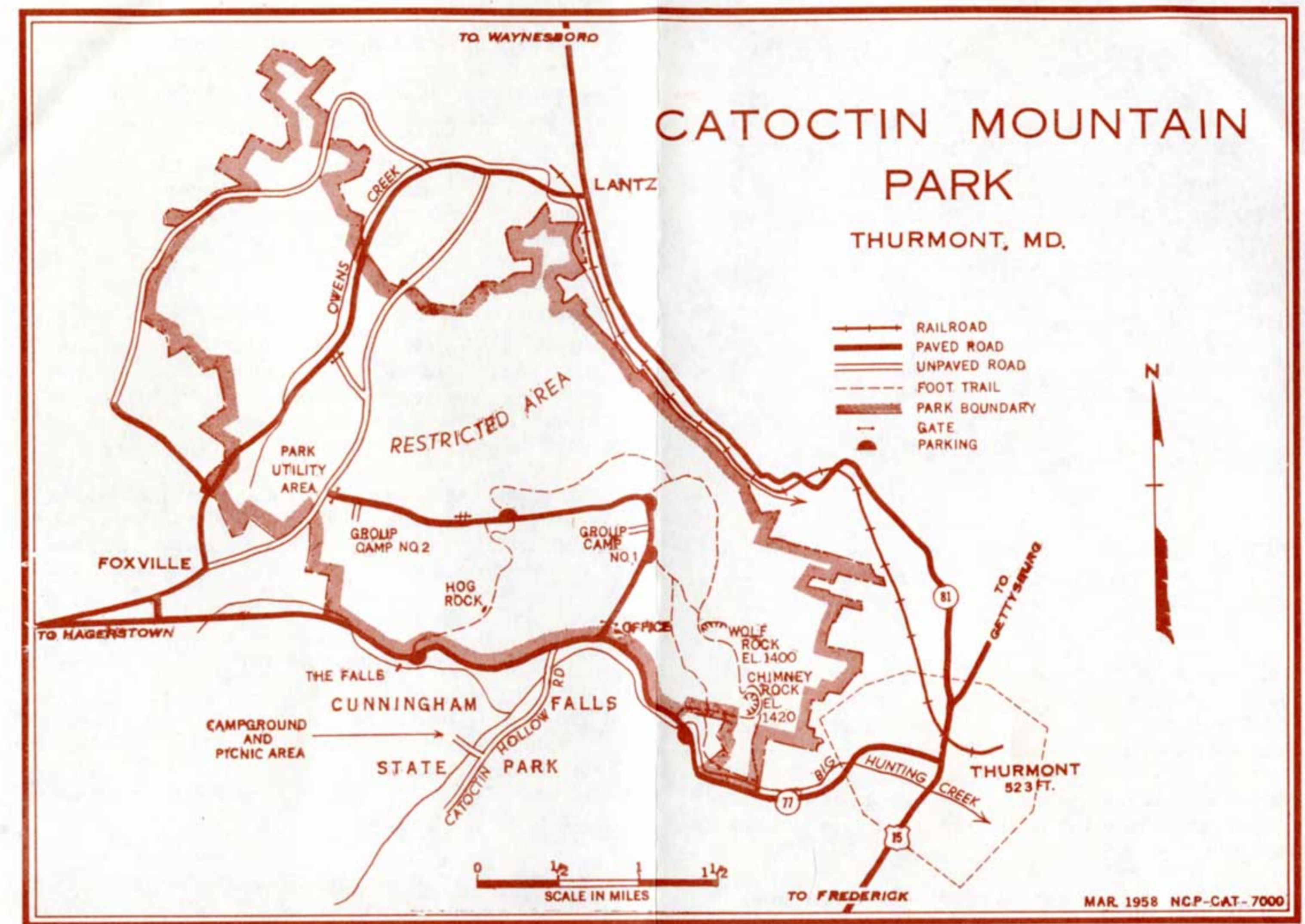
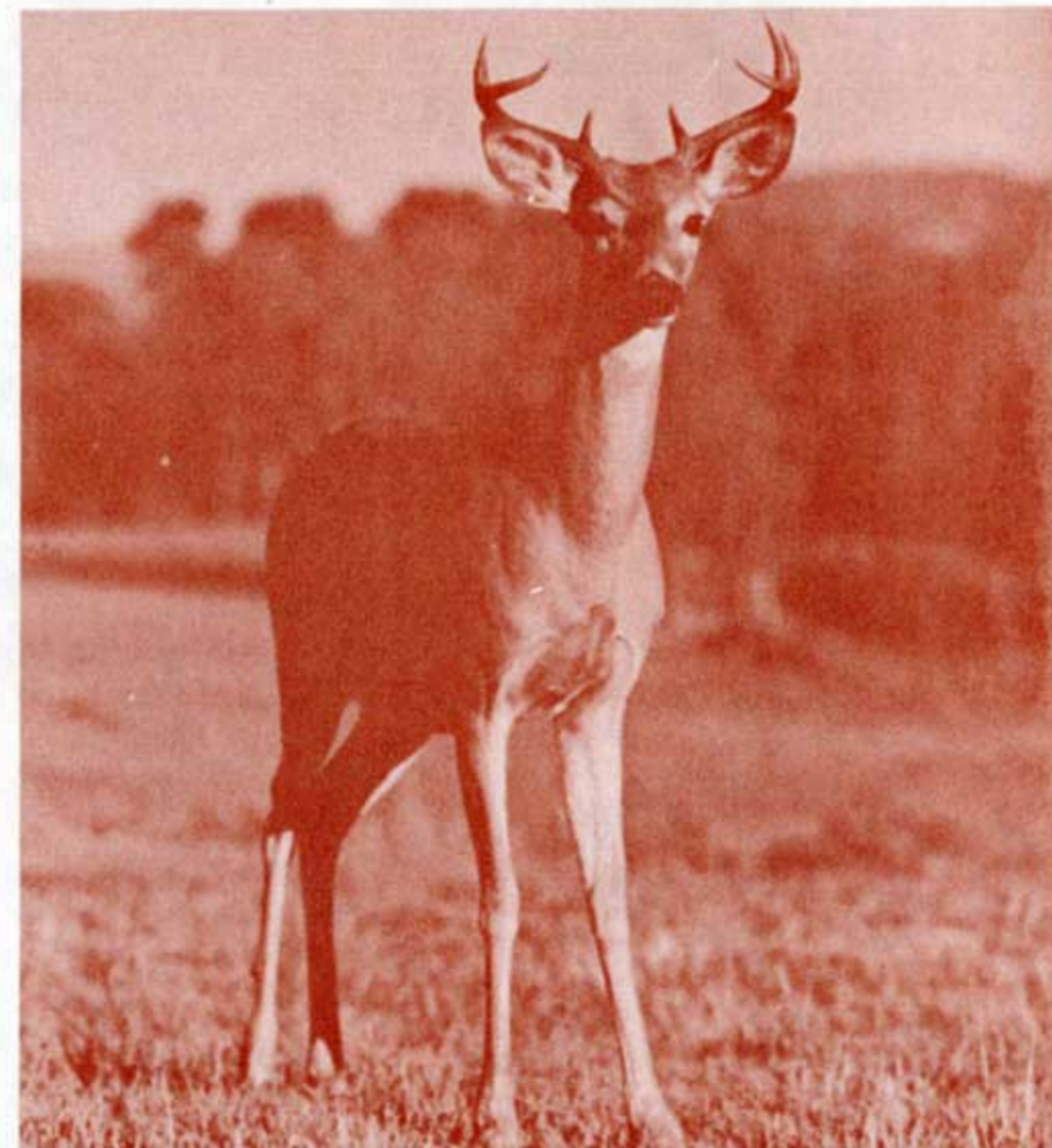
The forest undergrowth contains a delightful variety of plants including many species of shrubs, wildflowers, ferns, and mosses.

The park's protected natural environment has favored the growth of an interesting animal population. White-tail Deer, Gray Squirrels, Chipmunks, and Woodchucks are seen frequently. On occasion, Red or Gray Fox, Raccoons, and Opossums may be seen.



Ruffed Grouse, Barred Owls, and Turkey Vultures, as well as many smaller species of birds, are common in the area throughout the year. A variety of migratory birds visit the park in the spring, summer, and fall of the year.

Reptiles, amphibians, and many smaller members of the animal community are protected as a natural part of the forest and are of great interest to students of the out-of-doors.



## RECREATIONAL USE

### Development

Catoctin Mountain Park was developed by the Federal Government in the early 1930's to provide low-cost, organized camping facilities for accredited character--and health-building groups. Therefore, the park is used primarily by organized groups of campers. However, the general public is invited, and encouraged, to use the roads, trails, and fishing streams of the area as much as possible.

### Organized Camping Facilities

The park has two camps for use by organized camper groups. Each camp is equipped with a central unit consisting of a dining hall and kitchen, infirmary, washhouse, staff quarters, craft shop, and administration building. Camp facilities consisting of cabins, unit lodges, and latrines extend beyond the central unit. Each camp is also equipped with a swimming pool.

