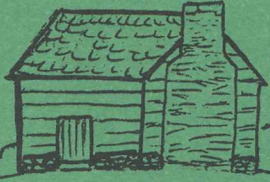


CHICKAMAUGA BATTLEFIELD



TRAIL GUIDE



The Trails: Chickamauga trails are marked and signed, each with a specific color. Listed below is the color-code system used in the park:

PERIMETER	_____
MEMORIAL	_____
CANNON	_____
CONFEDERATE LINE	_____
GENERAL BRAGG	_____
HISTORICAL	_____
NATURE	_____
HORSE TRAIL	_____

Chickamauga/Chattanooga National Military Park is administered by the National Park Service, U.S. Department of the Interior. A superintendent, whose address is P.O. Box 2128, Fort Oglethorpe, GA 30742, is in immediate charge.

As the nation's principal conservation agency, the Dept. of Interior has responsibility for most of our nationally owned public lands and natural resources. This includes fostering the wisest use of our land and water resources, protecting our fish and wildlife, preserving the natural and cultural values of our national parks and historic places, and providing for the enjoyment of life through outdoor recreation. The department also has a major responsibility for the American Indian Reservation communities and for people who live in island territories under U.S. administration.

National Park Service
U.S. Department of the Interior



NATIONAL
PARK
SERVICE

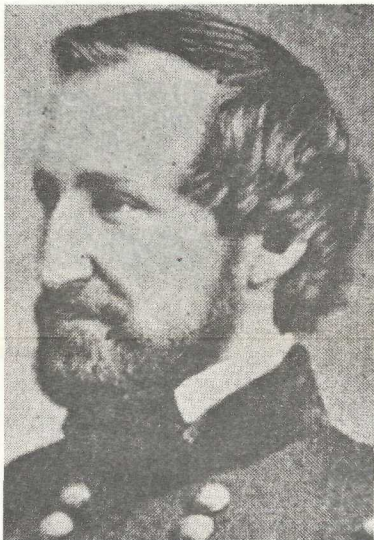
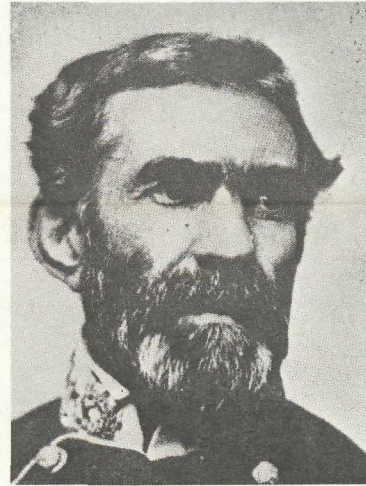


Please report any unusual sightings or problems (downed trees, vehicles on trails, unique animal sightings, etc.) to a park ranger. In the event of an emergency please phone park headquarters at (404) 866-9241 or contact any park ranger.

Horseback riding is permitted in the park, but is limited to designated horse trails only.

No horses are allowed on foot trails or roadways (with the exception of specified horse crossings) or off-trail in fields and woodlands. Please load and unload horses in the designated area only.

Do not leave horses unattended or tied to trees; ride single file at a walking pace and exercise courtesy to fellow riders and hikers encountered along the trail.



Please use the back country gently.



— For Your Information —

No permits are required for hiking the trails, but overnight use is prohibited. Firearms, pets, motorized vehicles and bicycles are not permitted on park trails. Fires, metal detectors and relic hunting are prohibited in the park. All plants, wildlife, natural and historic features—including park monuments—are protected by law and must not be disturbed.

This brochure is made available through a grant from the Rossville Kiwanis Club, Rossville, Ga., a public service agency dedicated to the education, intellectual fulfillment, and achievement of area youth.

Achievement awards for hikes completed on park trails are available through this agency: Please inquire at park headquarters for further information.

Chickamauga Battlefield Trails

Provide a unique and enjoyable encounter with the historical past in a natural setting. The 40-mile National Park Service Trail System includes a diversity of plant and animal life, varying terrain, and a natural perspective on the story of the Civil War at Chickamauga.

Much of the Battle of Chickamauga was fought in the woodlands and fields through which these trails pass; many beautiful monuments and markers tell a story impossible to see from developed roadways. . . .

Perimeter: Blue, 20 Miles

Trailhead at Park Visitor Center.

Encompasses much of the 5,500-acre battlefield, illustrating the critical influences of the southern landscape: both for the 24 or so families who lived here, and for the armies which came so suddenly together in the rolling hills and dense forests of Chickamauga.

Historical: Pink, 14 Miles

Trailhead at Park Visitor Center.

Piecemeal Confederate assaults on the strong Union line, Longstreet's fierce charge, the Confederate breakthrough, and the brilliant stands of Wilder and Thomas for the Union defense are the focus of this trail.

Cannon: Yellow, 14 Miles

Trailhead at South Post Gate.

Artillery batteries, the "long arm of the army," may be seen from this trail as it passes from one cannon grouping to another, each in place as they were during the battle.

Memorial: White, 12 Miles

Trailhead at South Post Gate.

Eight brigade commanders lost their lives at Chickamauga. Their monuments and stories may be seen and read along this trail.

General Bragg: Red, 7 Miles

Trailhead at South Post Gate.

The Confederate Commander Bragg was a man of strong will and ability, but had his flaws; this trail's theme concerns this complex southern leader.

Confederate Line: Orange, 6 Miles

Trailhead at Texas Monument, Battleline Road.

The dense southern forest was a nightmare of tangled vegetation for the men who fought here, and is typified by the Confederate battle line which this trail follows.

Nature: Green, 5 Miles

Trailhead near Rock Quarry at Highway 27 and Glenn-Viniard Roads.

Emerald-green Chickamauga Creek and a stately forest of mature oak, pine, and hickory characterize this beautiful trail near which many families dwelt in 1863.

— For Your Safety —

These items are highly recommended for a safe and pleasant experience on the Chickamauga Trail System:

First-aid kit, high-energy food, rain gear, comfortable walking shoes, and a park map. We encourage you to stay on marked trails, and not to travel alone. Learn to recognize and avoid poison oak, poison ivy, and poisonous snakes. Insects are prevalent during the summer; prepare for them. High temperatures are the rule in summer. Carry water with you!! No safe natural water sources are available within the park.

Please walk facing traffic when on developed roadways.

Horses have the right-of-way on park trails; when encountered please step aside and allow horse and rider to pass.

