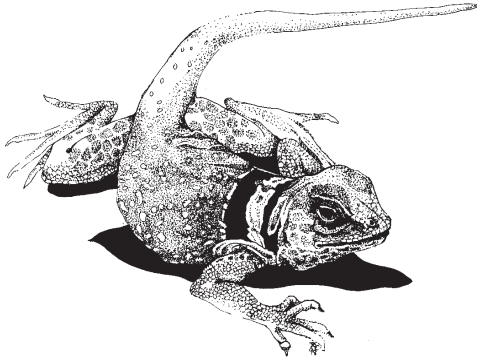
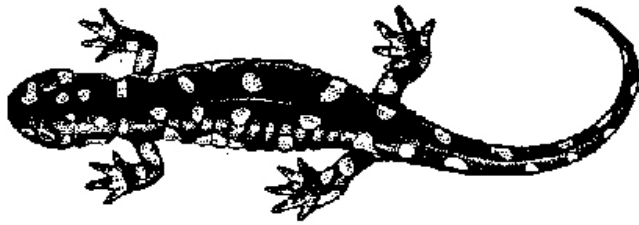




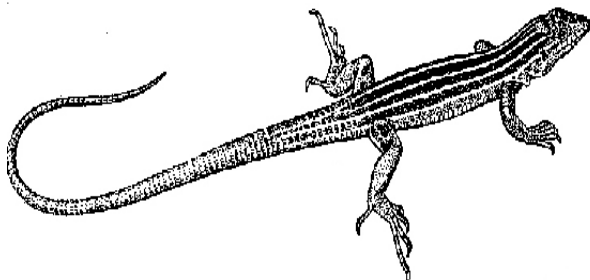
## Reptiles and Amphibians



**EASTERN COLLARED LIZARD** (*CROTAPHYTUS COLLARIS*)  
These brightly colored (turquoise, yellow, and black) lizards are a favorite of many park visitors. Highly visible and very common in the park, watch for these creatures near Pueblo Alto and nearly all of the sites.



**TIGER SALAMANDER** (*AMBYSTOMA TIGRINUM*)  
The tiger salamander occurs throughout the park environs, but is not commonly seen. Their larvae have been seen in pools of water in the Chaco Wash.

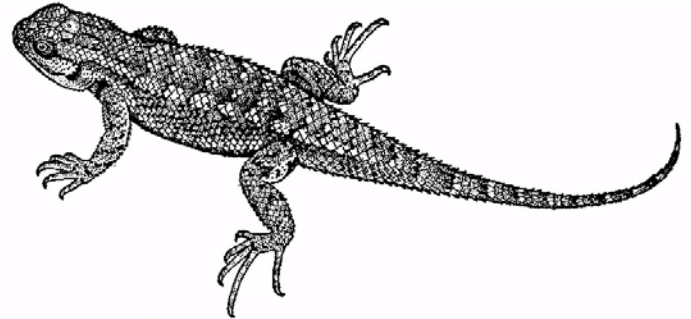


**PLATEAU STRIPED WHIPTAIL** (*CNEMIDOPHORUS VALOR*)  
Also very visible in the park, the whiptail can be seen on many trails in the frontcountry and backcountry.



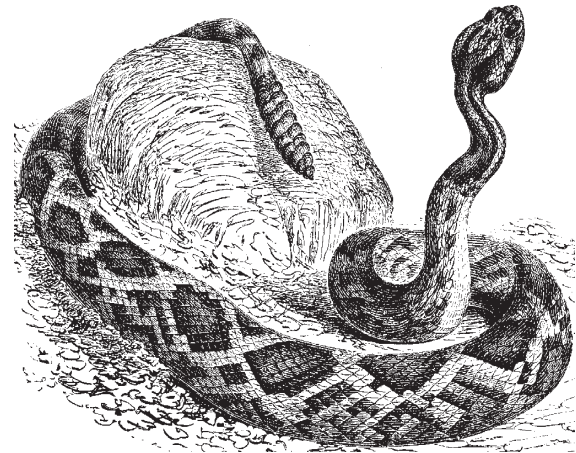
**MEXICAN SPADEFOOT TOAD**  
(*SPEA MULTIPLICATA*)

Best seen on summer nights after rains, the Mexican spadefoot toad is one of two spadefoot toads located in the canyon. Look for rock art in the park representing this amphibian.



**EASTERN FENCE OR SAGEBRUSH LIZARD**  
(*SCELOPORUS GRACIOSUS*)

Found in all of the habitats in Chaco, the fence lizard is the most abundant lizard in the canyon. You can see them climbing on rocks, at the Chacoan buildings and around the Visitor Center.



**WESTERN RATTLESNAKE** (*CROTALUS VIRIDIS*)

Chaco does host a population of rattlesnakes! Don't be too alarmed, the snakes tend to be rather shy. Watch for them in the summer months particularly along trails and sunning themselves on paved roads. Avoid hitting them!

# Amphibian and Reptile List

---

Chaco Culture National Historical Park is home to a wide variety of amphibians and reptiles. Some of these are quite numerous and seen frequently by park visitors, while others are rarer and only seen very occasionally. Please keep in mind while visiting that all wildlife within the park is protected in accordance with the mission of the National Park Service. Be aware of wildlife and take care not to disturb or harm it. This is particularly important when driving at night, when many animals such as snakes are more active and at risk of being run over.

## AMPHIBIANS

- **Tiger salamander (*Ambystoma tigrinum*) - common**
- **Plains spadefoot toad (*Spea bombifrons*) - uncommon**
- **Mexican spadefoot toad (*Spea multiplicata*) - common**

## REPTILES

### Lizards

- **Collared lizard (*Crotaphytus collaris*) - common**
- **Side-blotched lizard (*Uta stansburiana*) - common**
- **Lesser earless lizard (*Holbrookia maculata*) - common**
- **Sagebrush lizard (*Sceloporus graciosus*) - common**
- **Ornate tree lizard (*Urosaurus ornatus*) - uncommon**
- **Plateau whiptail lizard (*Cnemidophorus valor*) - common**
- **Greater short-horned lizard (*Phrynosoma douglasii*) - uncommon**

### Snakes

- **Gopher/bull snake (*Pituophis melanoleucus*) - common**
- **Western rattlesnake (*Crotalus viridis*) - common**
- **Western territorial garter snake (*Thamnophis elegans*) - uncommon**
- **Striped whipsnake (*Masticophis taeniatus*) - uncommon**
- **Glossy snake (*Arizona elegans*) - rare**
- **Night snake (*Hypsiglena torquata*) - common**

Source: Nowak, E.M., and Trevor B. Parsons. 2008. *Inventory of Amphibians and Reptiles for Twelve National Parks in the Southern Colorado Plateau Network*. Final Report to the National Park Service, Southern Colorado Plateau Network, Flagstaff, AZ.

---