

Platt

NATIONAL PARK

Arbuckle

RECREATION AREA • OKLAHOMA

Platt National Park and Arbuckle Recreation Area provide activities for the vacationer or nature lover. Platt National Park is a refreshing sweep of woodlands, and Arbuckle Recreation Area provides water-oriented sports in the Oklahoma prairie.

PLATT NATIONAL PARK

At the source of Travertine Creek in the east end of the park are Buffalo and Antelope Springs, the two large fresh-water springs in the park. Normally these springs have a combined flow of several million gallons of water a day; but during prolonged dry periods, they may stop flowing. At such time, Travertine Creek will also be dry.

Of the many cold mineral-water springs in the park, most can be classified broadly as sulphur springs, and three as bromide springs. Pavilion Springs, Hillside Spring, and Black Sulphur Spring are in the central part of the park near the main entrance. Bromide Spring and Medicine Spring are in the western part of the park, issuing from the base of Bromide Hill. Water from these two springs and sulphur water are dispensed at Bromide Pavilion. *While the spring waters are for the use of all visitors, they should not be taken in quantity except on the advice of a physician.* The National Park Service facilitates the use of the springs only by protecting and maintaining them according to the best possible standards; it makes no claim as to the medicinal value of the mineral waters.

HOW TO SEE THE PARK

Your first stop within the park should be at the Travertine Nature Center, which contains exhibits on the natural history of the area. A park naturalist is on duty to answer your questions and to interpret features of the area.

A 15-minute sound-slide program on environmental awareness is shown in the auditorium several times daily.

The following activities are conducted in summer to add to your knowledge and enjoyment of the park:

A nature walk is led daily by a park naturalist from the nature center, identifying plants, wildlife, and other objects of interest.

An aquatic nature walk, wading a short section of Rock Creek or Travertine Creek, is led by a park naturalist, who interprets the plant and animal community.

A children's nature program is held every day at the nature center.

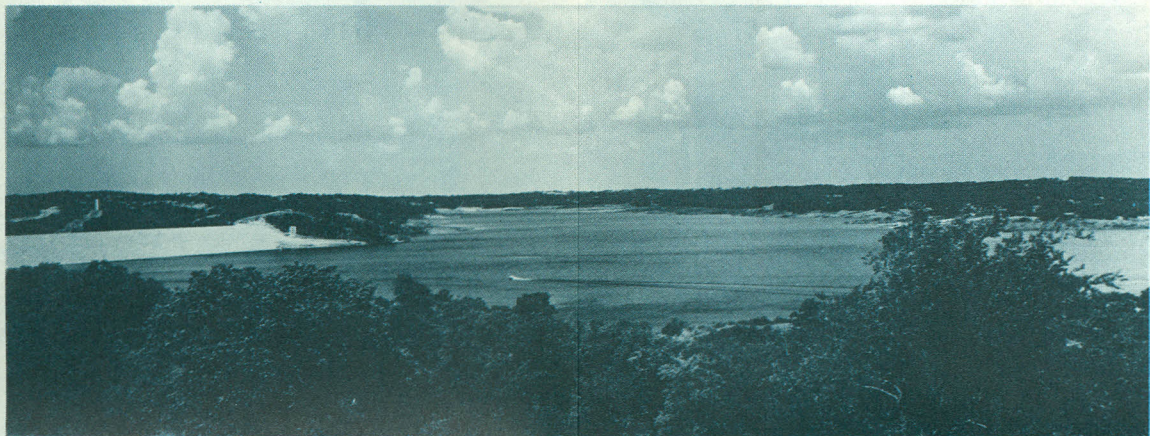
Evening programs are conducted in the nature center auditorium on a variety of subjects dealing with the natural world.

Campfire programs are held on weekends at Arbuckle Recreation Area. Weekly schedules showing time, place, and subjects are posted at the nature center and at all ranger stations.



Platt National Park

Arbuckle Recreation Area



CAMPING AND PICNICKING

The three campgrounds contain a total of 206 equipped campsites. Camping is limited to 30 days a calendar year and 14 days in summer. Reservations cannot be made.

Tables and fireplaces for picnicking have been placed throughout the park.

Firearms are prohibited unless adequately sealed, cased, broken down, or otherwise packed to prevent their use.

Pets must be kept under physical control. In the interest of sanitation, they may not be taken into pavilions or near pools or springs.

Park features—wildflowers, trees, animals, and rocks and minerals—are to be left in place and undisturbed, so that others may enjoy them.

ARBUCKLE RECREATION AREA

Arbuckle Recreation Area is in the Arbuckle Mountains, about 8 miles southwest of Platt National Park. The region consists of low, rolling hills rising to 1,450 feet above sea level, some 500 to 700 feet above the surrounding prairies. Springs, clear-running streams, rocky bluffs, grassy ridges, and wooded hillsides combine pleasantly to give this place its distinctive character amid the plains that surround the Arbuckle Uplift.

In 1962, Congress authorized the Bureau of Reclamation to construct Arbuckle Dam. The

National Park Service assumed responsibility in 1965 for administering recreational use of 5,646 acres of the land and water areas of the project.

Arbuckle Dam, at the confluence of the Buckhorn, Guy Sandy, and Rock Creeks, has a volume of 2,850,000 cubic yards of earthfill material. Its crest height is 140 feet above the streambed of Rock Creek, and its length is 1,890 feet. Normal, or conservation, pool level of the reservoir is 872 feet above sea level, with an area of approximately 2,350 acres. Depth of the lake at the base of the dam is approximately 90 feet.

All land immediately surrounding the lake is owned by the Federal Government and is reserved for public use. Private lots or building sites having direct access to water are not available.

RECREATIONAL ACTIVITIES

Boating. Boat-launching is permitted *only* at the three designated ramps. Operators of all boats must comply with Federal and State laws pertaining to registration and operation. A boat safety inspection permit is required. The permits can be obtained, without charge, at the launch ramps. Public courtesy loading and unloading docks are near the boat ramps.

Fishing. You may fish throughout the year at the recreation area. Channel catfish, large-mouth bass, sunfish, and crappie are predominate sport fish in the lake. An Oklahoma fishing license is

required, and all applicable State fishing laws are enforced.

Camping. Drinking water, flush or chemical toilets, and campsites, with tables and fireplaces, are at Buckhorn Rock, The Point, and Guy Sandy areas. Trailer and camper units are welcome, but there are no hookups or special facilities for them.

Camping on or from boats is limited to 14 days.

Fires. Build fires only in fireplaces at designated areas. Be sure your campfire is out before you leave it. Be careful with cigarettes and matches.

Picnicking. Facilities include picnic tables, fireplaces, and chemical toilets at The Point, Buckhorn Rock, and Guy Sandy.

Drinking water is available at Buckhorn Rock, The Point, and Guy Sandy.

Swimming. There are no developed beaches, but there are lifeguard-protected swimming areas at The Point and Buckhorn Rock sites.

Water-skiing. As a safety measure, an operator and an observer are required in each boat pulling a skier. Water that is off limits to skiers is posted by markers or signs.

Skindiving. A permit, which may be obtained from any park ranger, is required.

Hunting and trapping are permitted in accordance with Federal and State laws except in designated developed and concentrated public-use areas. Closed areas are posted.

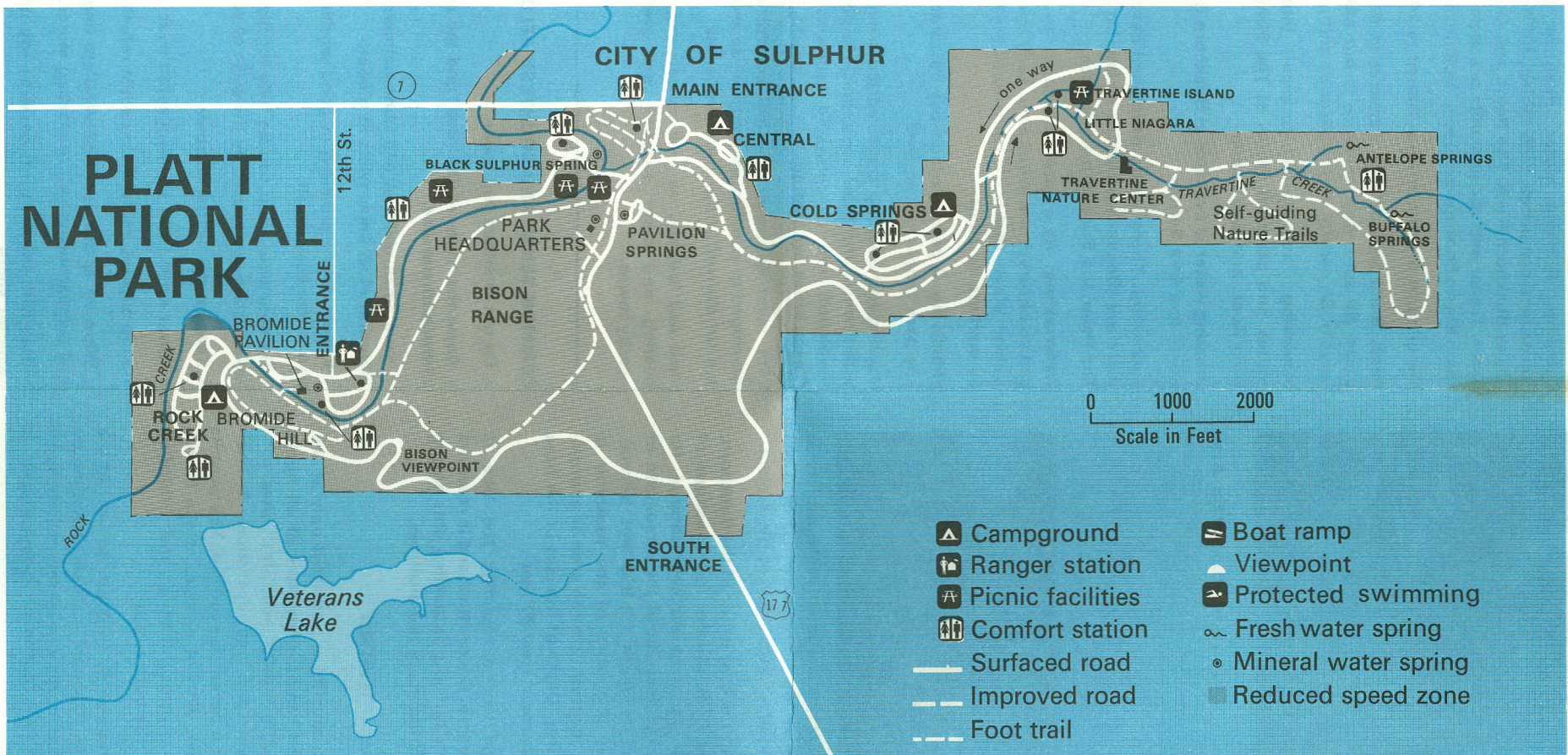
Pets must be under physical control when in developed or concentrated public-use areas. They are not allowed at the swimming areas.

Food and lodging, as well as camping, fishing, boating, and other supplies, are available in nearby towns.

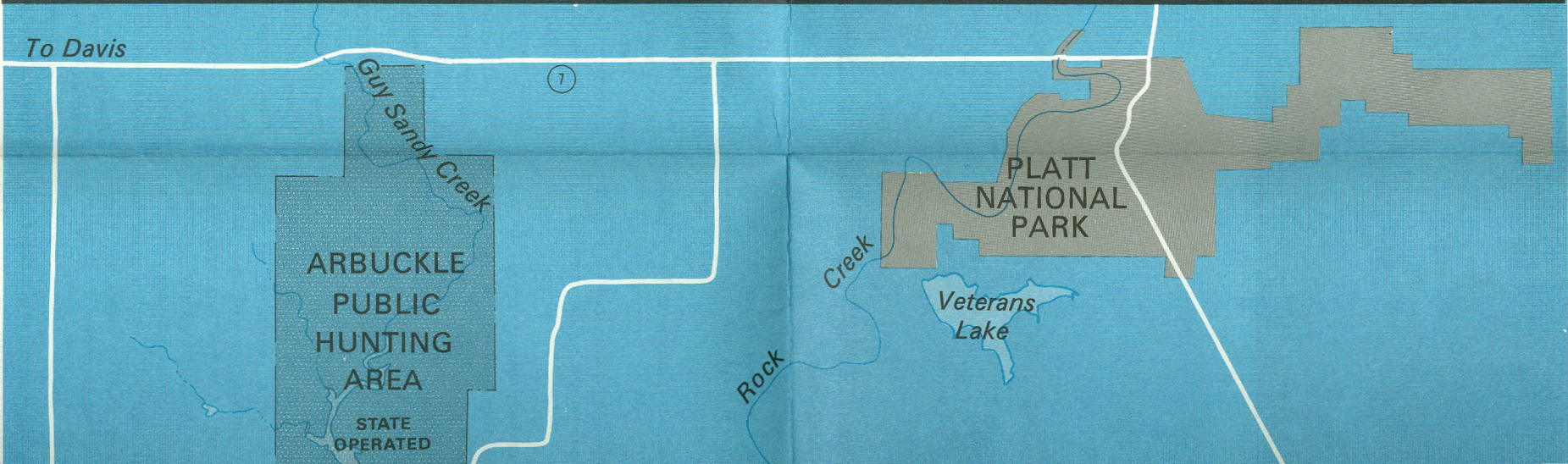
COMMON SENSE AND COURTESY AFLOAT

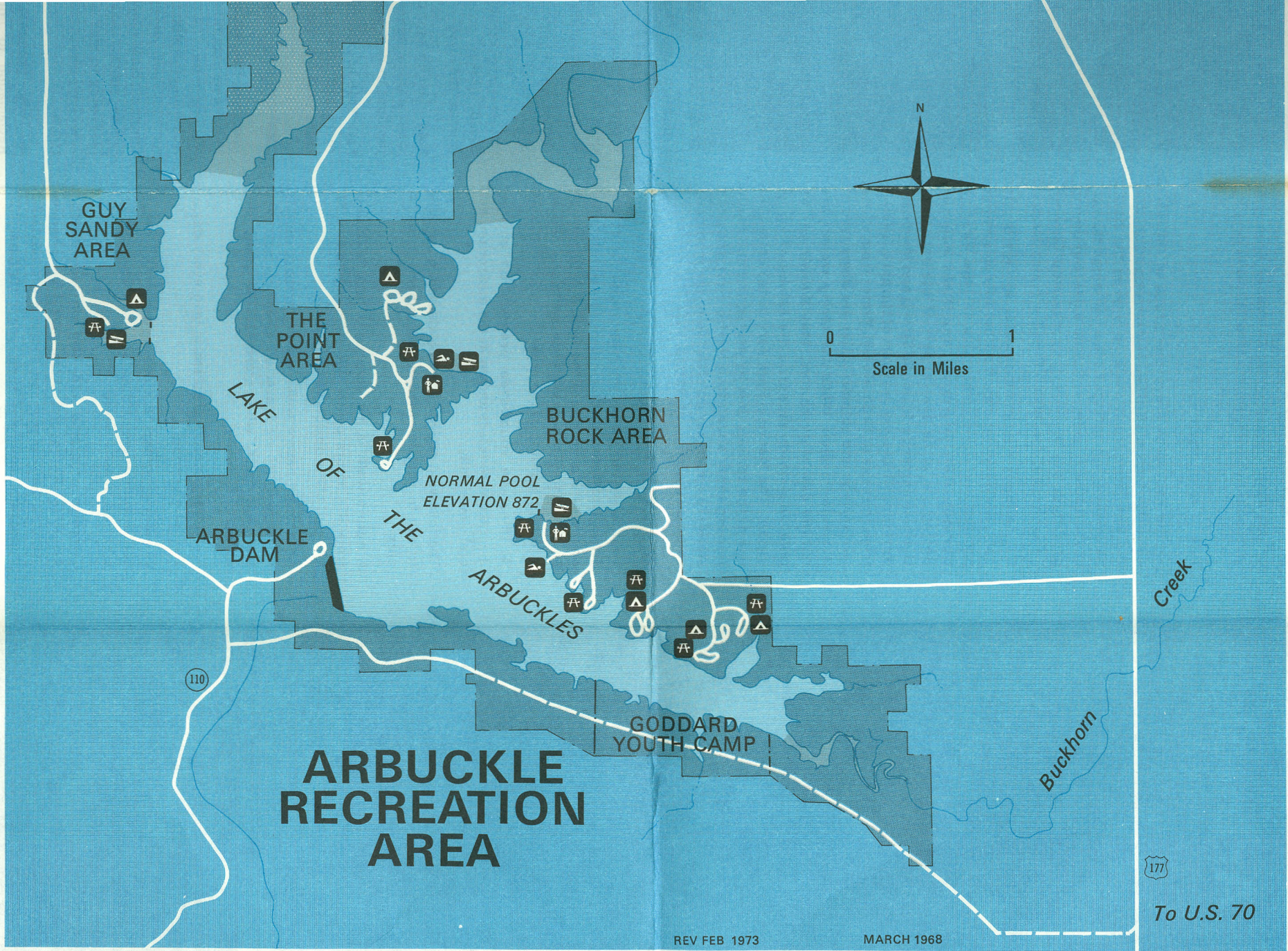
- Do not overload your boat.
- Know the "rules of the road" and the markings of navigational aids.
- Have small children and nonswimmers wear a lifejacket at all times while in a boat.
- Keep safety equipment in good working order and within easy reach.
- Be courteous. You can be held legally responsible for damage caused by the wake of your boat.
- Keep an eye on the weather.
- Never swim from an unanchored boat.
- Stop engines and smoking while refueling.
- Wipe up spilled fuel and ventilate engine and fuel compartments before starting motor.
- Stay with the boat if it capsizes—do not try to swim for shore.

PLATT NATIONAL PARK



To Davis





REV FEB 1973

MARCH 1968

Copyright © 1968 by the State of Tennessee
All rights reserved. No part of this map may be reproduced without the written permission of the State of Tennessee.

FOR YOUR SAFETY

Do not allow your visit to be spoiled by an accident. Efforts have been made to provide for your safety, but there are still hazards which require your alertness and vigilance. Exercise common sense and caution.

ADMINISTRATION

Platt National Park and Arbuckle Recreation Area are administered by the National Park Service, U.S. Department of the Interior. A superintendent, whose address is Box 201, Sulphur, OK 73086, is in immediate charge of both areas.

As the Nation's principal conservation agency, the Department of the Interior has basic responsibilities for water, fish, wildlife, mineral, land, park, and recreational resources. Indian and Territorial affairs are other major concerns of America's "Department of Natural Resources." The Department works to assure the wisest choice in managing all our resources so each will make its full contribution to a better United States—now and in the future.

National Park Service

U.S. DEPARTMENT OF THE INTERIOR