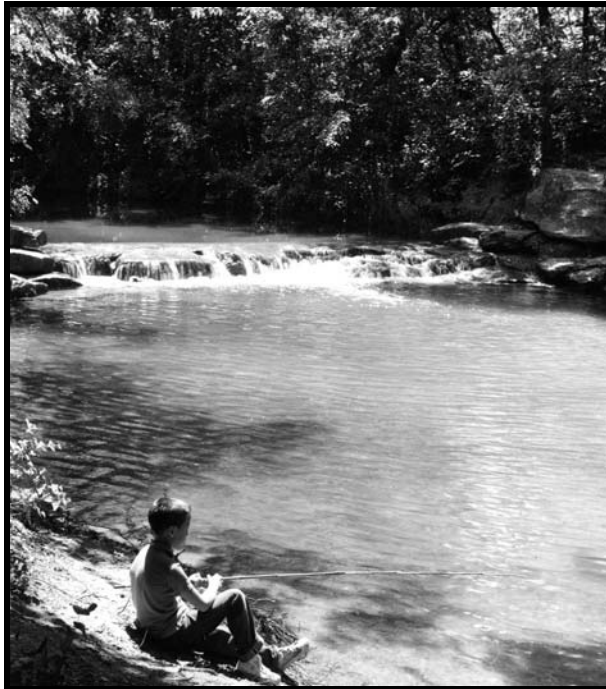




CHICKASAW NATIONAL RECREATION AREA

HYDROLOGY RECORDS OF PLATT NATIONAL PARK

FINDING AID



ACC CHIC- 00089
CAT CHIC 2560

Prepared by
National Park Service Intermountain Region
Museum Services Program
Tucson, Arizona

August 2008

Chickasaw National Recreation Area

**Hydrology Records
of Platt National Park**

**Acc Nbr: CHIC-00089 Cat Nbr: CHIC 2560
Finding Aid**

Description:

The collection contains documents relating to historical hydrological matters of Platt National Park before it became Chickasaw National Recreation Area in 1976. Documents include reports, manuscripts, correspondence, memorandums, and data samples regarding water flow and quality.

Copyright:

No copyrighted material is contained in this collection.

Acquisition:

These records were found at Chickasaw National Recreation Area.

Processing:

This collection was processed and cataloged at the Intermountain Region Museum Services Center by Leslie Matthaei in August 2008.

Arrangement:

This collection is maintained in its original order. The first four folders are arranged according to their original placement within the collection. The remaining folders are arranged by year.

Extent:

This collection totals 1.25 LF.

**Hydrology Records of Platt National Park
ACC CHIC-00089 CAT CHIC 2560****Container List****Box 1 of 3**

File Unit Nbr	Title
001	"OKLAHOMA BASINS PROJECT, PRELIMINARY EVALUATIONS OF WATER RESOURCES AND DEVELOPMENT POTENTIAL FOR MILL CREEK BASIN, JOHNSTON COUNTY, OKLAHOMA"
002	MISCELLANEOUS CORRESPONDENCE, 1907 - 1939
003	WATER SUPPLY AND WATER WORKS SYSTEM - CORRESPONDENCE
004	"OKLAHOMA OASIS"
005	1906 - 1907
006	1907

Box 2 of 3

File Unit Nbr	Title
007.1	1908 - 1910
007.2	1908 - 1910
008.1	1911 - 1912
008.2	1911 - 1912
009	1913 - 1914
010	1915 - 1916

Box 3 of 3

File Unit Nbr	Title
011	1917 - 1928
012	1929 - 1938
013	1939 - 1953
014.1	1967 - 1973
014.2	1967 - 1973

COPYRIGHT AND RESTRICTIONS

The copyright law of the United States (Title 17, United States Code) governs the making of photocopies or other reproductions of copyrighted materials. The various state privacy acts govern the use of materials that document private individuals, groups, and corporations.

Under certain conditions specified in the law, libraries and archives are authorized to furnish a reproduction if the document does not infringe the privacy rights of an individual, group, or corporation. These specified conditions of authorized use include:

- non-commercial and non-profit study, scholarship, or research, or teaching
- criticism, commentary, or news reporting
- as a NPS preservation or security copy
- as a research copy for deposit in another institution

If a user later uses a copy or reproduction for purposes in excess of "fair use," the user may be personally liable for copyright, privacy, or publicity infringement. This institution's permission to obtain a photographic, xerographic, digital, or other copy of a document doesn't indicate permission to publish, exhibit, perform, reproduce, sell, distribute, or prepare derivative works from this document without first obtaining permission from the copyright holder and from any private individual, group, or corporation shown or otherwise recorded.

Permission to publish, exhibit, perform, reproduce, prepare derivative works from, sell, or otherwise distribute the item must be obtained by the user separately in writing from the holder of the original copyright (or if the creator is dead from his/her heirs) as well as from any individual(s), groups, or corporations whose name, image, recorded words, or private information (e.g., employment information) may be reproduced in the source material. The holder of the original copyright isn't necessarily the National Park Service. The National Park Service is not legally liable for copyright, privacy, or publicity infringement when materials are wrongfully used after being provided to researchers for "fair use."

This institution reserves the right to refuse to accept a copying order if fulfillment of the order is judged in violation of copyright or federal or state privacy or publicity law.

SCOPE AND CONTENT

Collection: CHIC 00089

Collection Title: HYDROLOGY RECORDS OF PLATT NATIONAL PARK

Catalog No CHIC 2560

Accession No CHIC-00089

Inclusive Dates 1902-1973

Bulk Dates 1902-1973

History

In an effort to preserve and maintain the springs in the city of Sulphur Springs, Oklahoma, members of the Chickasaw and Choctaw tribes met with the United State government in March 1902. Members of these two tribes agreed to cede land to the government and in an act of congress Sulphur Springs Reservation, a 640-acre tract that protected the land's known natural springs, was created. In 1906 another act of congress officially changed the Reservation's name from Sulphur Springs Reservation to Platt National Park. The name change honored Connecticut Senator Orville Hitchcock Platt, a member of the Committee and Indian Affairs, who contributed much to the cause of Indians. To fully acknowledge visitors' interest in the park and the park's expanding features, Platt National Park became Chickasaw National Recreation Area in the 1970s.

The documents in this collection relate to historical hydrological matters of Platt National Park.

Scope

This collection contains photocopies of Superintendent's Annual Reports, fiscal year reports, ranger reports, and correspondence and memorandum relating to various hydrology concerns including sewage, well and spring pollution and sanitation, preservation and repair of park springs, water issuance, and water diversion from 1902 to 1973. Correspondence and memorandums are primarily between National Park Service and Department of Interior Personnel including the superintendents of Platt National Park and the acting directors of the park service.

Arrangement

This collection is maintained in its original order. The first four folders are arranged according to there original placement within the collection. The remaining folders are arranged by year.

Provenance These records were found at Chickasaw National Recreation Area.

Finding Aid Created by the IMR Museum Services Center, Tucson, AZ, 2008
LVL CTRL, FILE UNIT

Extent 1.25 LF

File Unit: 001

Dates: 03/1969

Title: "OKLAHOMA BASINS PROJECT, PRELIMINARY EVALUATIONS OF WATER RESOURCES AND DEVELOPMENT POTENTIAL FOR MILL CREEK BASIN, JOHNSTON COUNTY, OKLAHOMA"

Summary Notes:

This folder contains "Oklahoma Basins Project, Preliminary Evaluations of Water Resources and Development Potential for Mill Creek Basin, Johnston County, Oklahoma," prepared by the Bureau of Reclamation, Region 5, March 1969.

File Unit: 002

Dates: 1907-1939

Title: MISCELLANEOUS CORRESPONDENCE, 1907 - 1939

Summary Notes:

This folder contains photocopies of correspondence and memorandums regarding water issues, funding appropriations, sanitary improvements to the park, fiscal year reports, annual reports, and appointment of park superintendent(s). Correspondence and memorandums are primarily between the acting superintendent of Platt National Park and the acting director of the National Park Service.

File Unit: 003

Dates: 1902-1917

Title: WATER SUPPLY AND WATER WORKS SYSTEM - CORRESPONDENCE

Summary Notes:

This folder contains photocopies of correspondence and memorandums regarding the water supply and the water works systems including sewage and sewer systems, pipe lines, and pumping water from Sulphur Creek. This folder also contains the rules and regulations for managing the Sulphur Springs Reservation in the Chickasaw Nation, and general regulation outlines for governing in the park.

Series Nbr:

File Unit: 004

Dates: 1902-1917

Title: "OKLAHOMA OASIS"

Summary Notes:

This folder contains a copy of "Oklahoma Oasis" by Palmer H. Boeger.

File Unit: 005
Dates: 1905-1907
Title: 1906 - 1907

Summary Notes:

This folder contains photocopies of correspondence and memorandums regarding Hillside Spring pollution and repair, contamination of park springs and wells, park upkeep and maintenance, employment of park personnel, use of water, and drilling for wells; and a report on specific springs within the park prepared by Charles Gould.

File Unit: 006
Dates: 1907
Title: 1907

Summary Notes:

This folder contains photocopies of correspondence and memorandums regarding repair and preservation of park springs, diversion of water sources including Sulphur Creek, sewage flow, park rules and regulations, park construction plans, payroll and vouchers, and park expenditures.

File Unit: 007.1 – 007.2
Dates: 1908-1910
Title: 1908 - 1910

Summary Notes:

This folder contains photocopies of correspondence and memorandums regarding ranger monthly reports, fiscal year reports, patrol reports including water patrol, Rock Creek and Bromide Spring banks, park concessions, climate, conditions of the springs, privilege licenses, water issuance of bromide water, and appropriations for park improvements; and an oversize map for a proposed water line.

File Unit: 008.1 – 008.2
Dates: 1911-1912
Title: 1911 - 1912

Summary Notes:

This folder contains photocopies of correspondence and memorandums regarding monthly reports, the development of Medicine Springs, sewage system appropriations, fiscal year reports, rebuilding on and around spring areas, fiscal year appropriations, and bromide water issuance; and a 1911 and 1912 report on Platt National Park by the Secretary of the Interior.

File Unit: 009
Dates: 1913-1914
Title: 1913 - 1914

Summary Notes:

This folder contains photocopies of correspondence and memorandums regarding monthly ranger and superintendent reports, and fiscal year reports; a daily record of work from the park special laborer; and a 1913 and a 1914 report of the Platt National Park Superintendent to the Secretary of Interior.

File Unit: 010
Dates: 1915-1916
Title: 1915 - 1916

Summary Notes:

This folder contains photocopies of the correspondence and memorandums regarding a yearly condition of affairs report; a 1915 annual report; reports of the daily record work logs from the park special laborer; and specifications for Bromide pavilion.

File Unit: 011
Dates: 1917 - 1928
Title: 1917 - 1928

Summary Notes:

This folder contains photocopies of correspondence and memorandums regarding an enclosure of the center spring of Rock Creek; yearly reports; concession licenses for shipping water; park general statements; and special use permit applications.

File Unit: 012
Dates: 1929-1938
Title: 1929 - 1938

Summary Notes:

This folder contains photocopies of correspondence and memorandums regarding visitor complaints, and park spring water samples and analyses; park general statements; the Superintendents annual report for 1931-1934 and 1936-1938 annual report; a 1932 and a 1938 report of inspections with related correspondence; water and sewage supply cost estimations; a narrative account of the Civilian Conservation Corp's work at the park; and place names for park sites with related correspondence.

File Unit: 013

Dates: 1939-1953

Title: 1939 - 1953

Summary Notes:

This folder contains photocopies of correspondence and memorandum regarding visitor complaints, underground water supply, data on flowing wells in and near the park with data results, geological report on water conditions, park inspections, and revisions for the 1951 fiscal year; and the Superintendent's annual reports from 1939 through 1953.

File Unit: 014.1 – 014.2

Dates: 1967-1973

Title: 1967 - 1973

Summary Notes:

This folder contains photocopies of correspondence and memorandums regarding Hillside Springs including Hillside Springs water systems inventory, water analysis for Pavilion Springs and Bromide with related data, spring maintenance issues, and observation well sites; a drilling log book for well sites at or near Platt National Park; an economic analysis of tourism and the travel business in Oklahoma for 1968 prepared by Lewis C. Copeland of the University of Tennessee; a report on the recreation potential of Murray County; a 1972 economic base report for Murray County; data for Black Sulphur Springs; and water system data for stream systems and mineral water systems.
