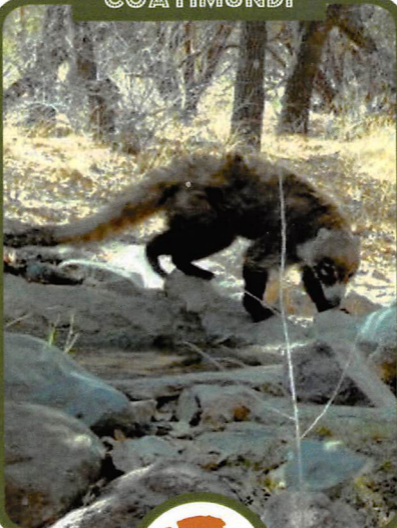


COATIMUNDI



WILLCOX



#10-b

2016

National Park Service
CENTENNIAL

**CHIRICAHUA
NATIONAL MONUMENT**

OF BIRDS FOUND

171

OF REPTILES FOUND

46

OF MAMMAL SPECIES FOUND

71

FUN FACTS #10-b

Animals that live in grasslands, desert scrub, riparian and pine woodlands and other specialized habitats can all find a home in the "sky-island" of the Chiricahua mountains.

NPS 100TH BIRTHDAY