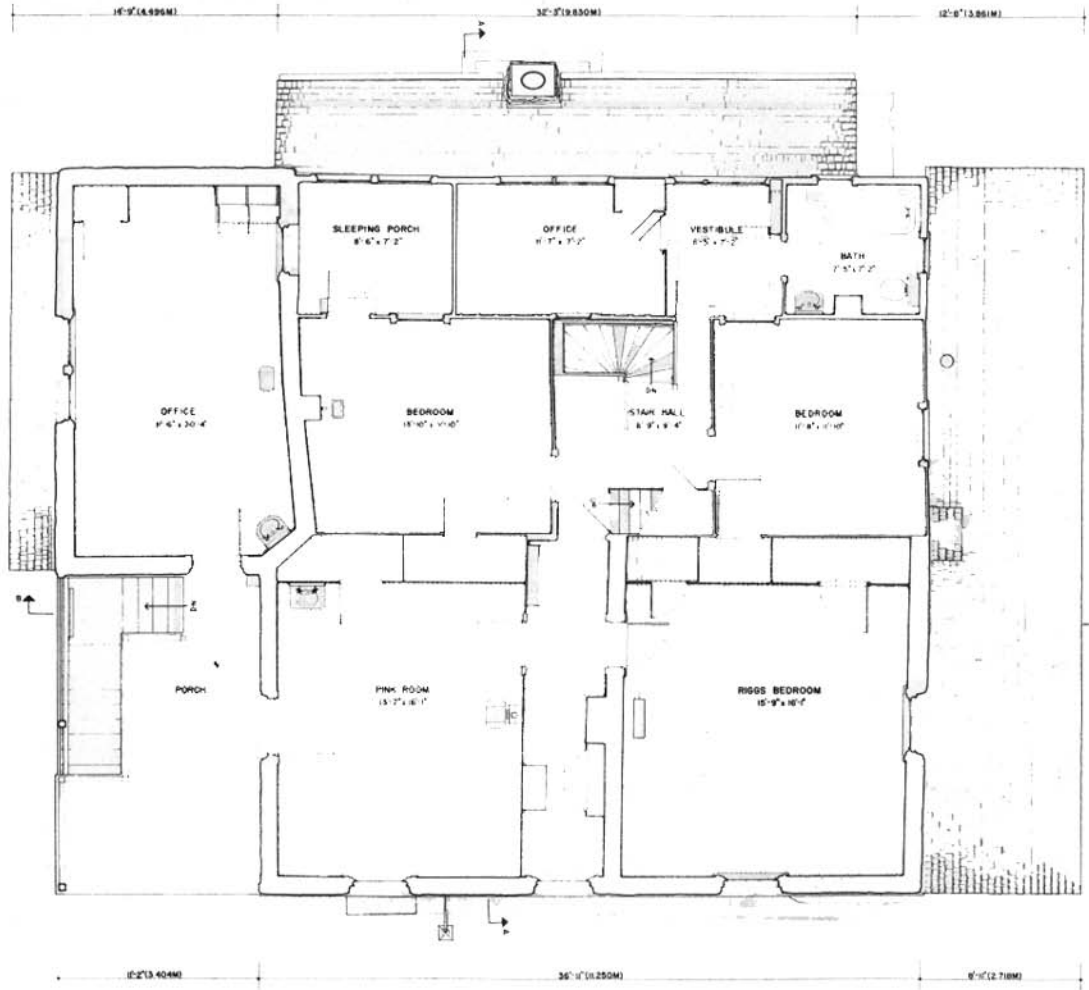


20'-0" (6.096M)

20'-0" (6.096M)

17'-0" (5.181M)



16'-0" (4.878M)

32'-0" (9.753M)

12'-0" (3.658M)

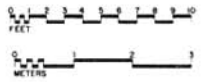
12'-0" (3.658M)

36'-0" (10.950M)

8'-0" (2.438M)

**MATERIALS**

FLOORS FIR TONGUE & GROOVE BOARDS  
 AND LINOLEUM  
 WALLS ADORE BRICK AND VERTICAL BOARD  
 ROOFS WOOD SHINGLES



**SECOND FLOOR PLAN**

DRAWN BY: MICHAEL A. LAVOIO  
 CHIRICAHUA NATIONAL MONUMENT  
 FEDERAL BUREAU OF SURVEY (FBS)  
 UNITED STATES DEPARTMENT OF THE INTERIOR  
 BUREAU OF LAND MANAGEMENT  
 1988

CHECKED BY: MICHAEL A. LAVOIO  
 CHIRICAHUA NATIONAL MONUMENT  
 FEDERAL BUREAU OF SURVEY (FBS)  
 UNITED STATES DEPARTMENT OF THE INTERIOR  
 BUREAU OF LAND MANAGEMENT  
 1988

REPRODUCED FROM THE ORIGINAL DRAWING BY MICHAEL A. LAVOIO, 1988. THE ORIGINAL DRAWING IS IN THE POSSESSION OF THE BUREAU OF LAND MANAGEMENT, U.S. DEPARTMENT OF THE INTERIOR.

ERICKSON - RIGGS RANCH HOUSE  
 CHIRICAHUA NATIONAL MONUMENT, COCHISE COUNTY, ARIZONA

HISTORIC AMERICAN  
 BUILDINGS SURVEY  
 JANUARY 19, 1970