

RESOURCES MANAGEMENT DIVISION (CHIS)  
Role and Function

The role of the Resources Management Division at Channel Islands National Park is:

- To increase knowledge of the natural and cultural resources, and to predict the impacts of actions on those resources,
- To restore natural systems which have been altered by European peoples,
- To mitigate damage to natural and cultural resources, and,
- To maintain natural systems which require human intervention in order to duplicate natural events which no longer occur,

in order to conserve and/or restore the nationally significant natural, cultural, and ecological values of the park.

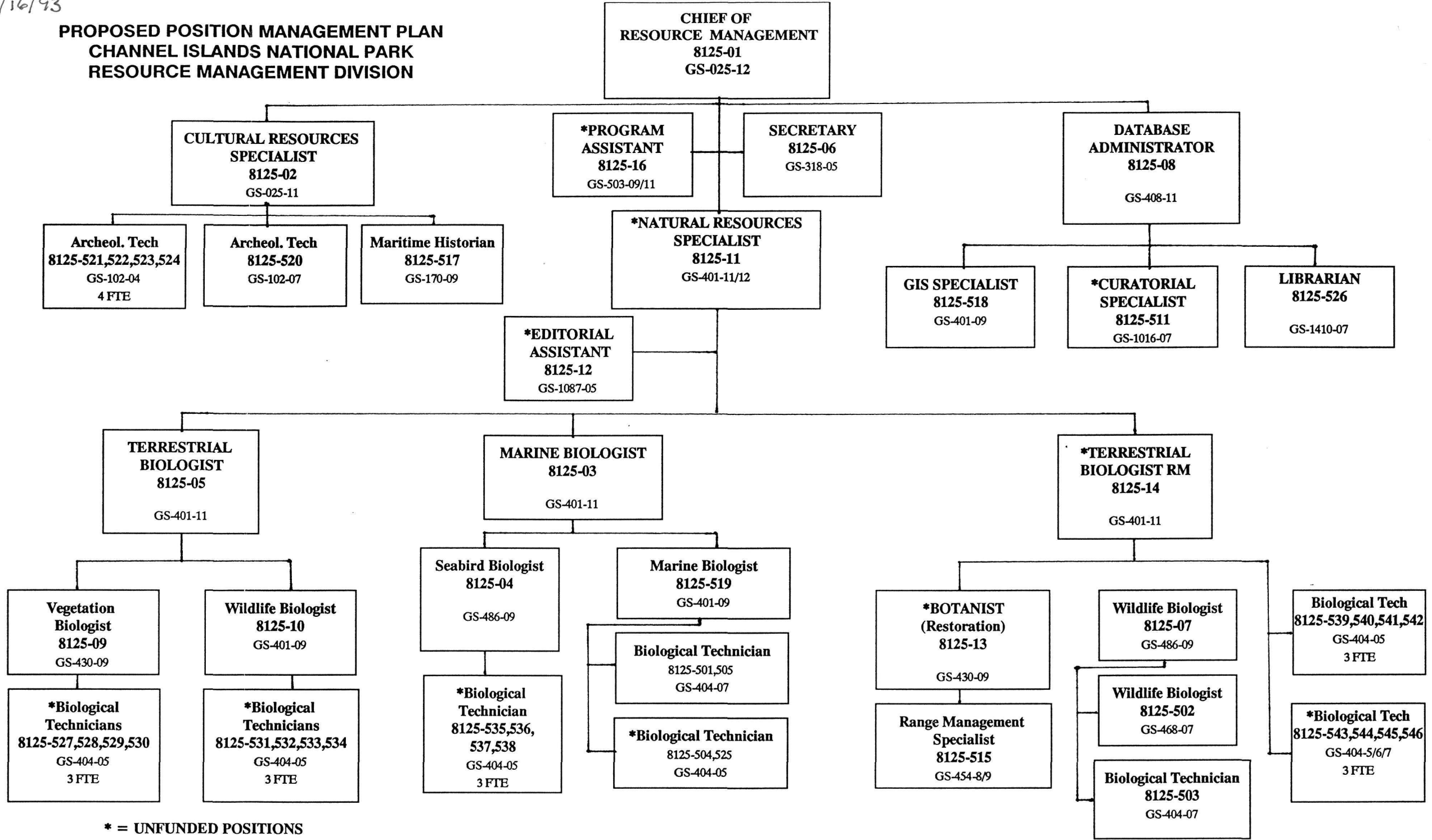
The functions performed by the Resources Management Division are:

- Carry out the protocols as stipulated in the Monitoring handbooks. Analyze and test monitoring methods.
- Prioritize and develop programs for the removal of non-native species and the restoration of native species and communities.
- Develop and/or use data collection methods and data management systems that are accurate, up to date, well organized, and retrievable.
- Prepare and regularly update a Resources Management Plan (RMP) for the park.
- Work closely with the Research Division in the development of the RMP, identification of issues, restoration of ecosystems, interpretation of monitoring data, and information management.
- Ensure compliance with NEPA, National Historic Preservation Act, Endangered Species Act, and other laws which protect park resources.
- Manage the national beach debris monitoring program.
- Serve as primary liaison with other agencies on resource management matters.
- Recommend mitigation actions for activities which compromise the health of park resources (e.g. range management, offshore oil drilling, construction projects, military activities, marine harvests).
- Serve as an information resource to park staff and the public. Communicate resource trends, problems, and management recommendations to park staff.
- Review collecting permit requests and issue, as appropriate. Coordinate research by non-Channel Islands staff.
- Coordinate the following programs: Air quality, wilderness, threatened and endangered species.
- Oversee curation of the park's museum collection.

**APPROVED**  
12 JUL 1993

8/16/93

**PROPOSED POSITION MANAGEMENT PLAN  
CHANNEL ISLANDS NATIONAL PARK  
RESOURCE MANAGEMENT DIVISION**



\* = UNFUNDED POSITIONS