



An 1000-year-old Bald Cypress



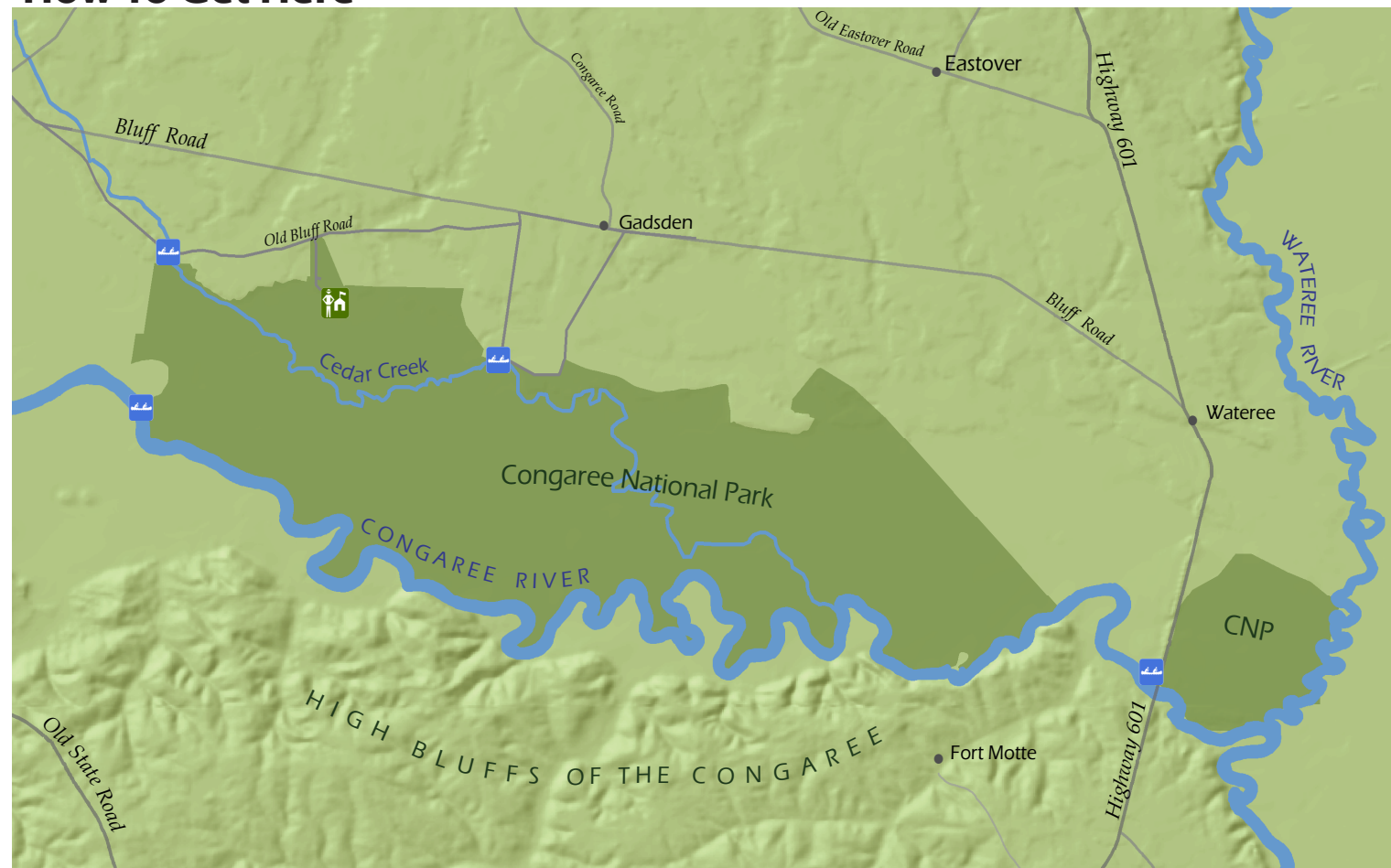
Canoe or kayak down Cedar Creek, which has two easily-accessible boat ramps: one on Old Bluff Road, and another on South Cedar Creek Road.



The park, while most notable for its virgin bottomland forests, is also home to long-leaf pine savannas, which once covered much of South Carolina, but were lost to logging.

To I-77 and Columbia, via Bluff Road

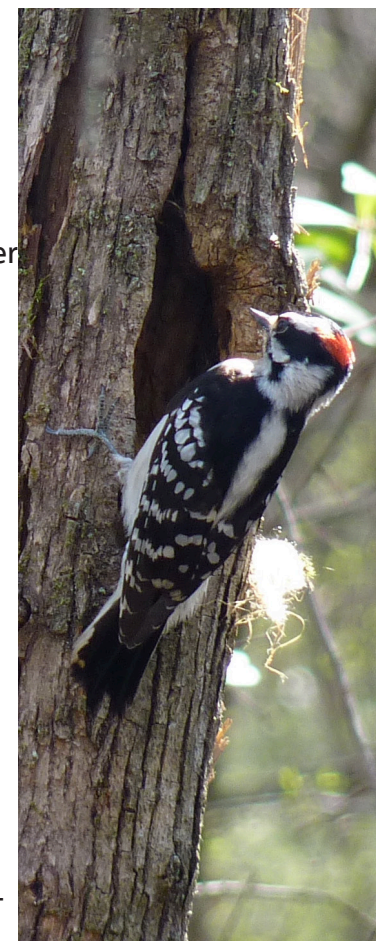
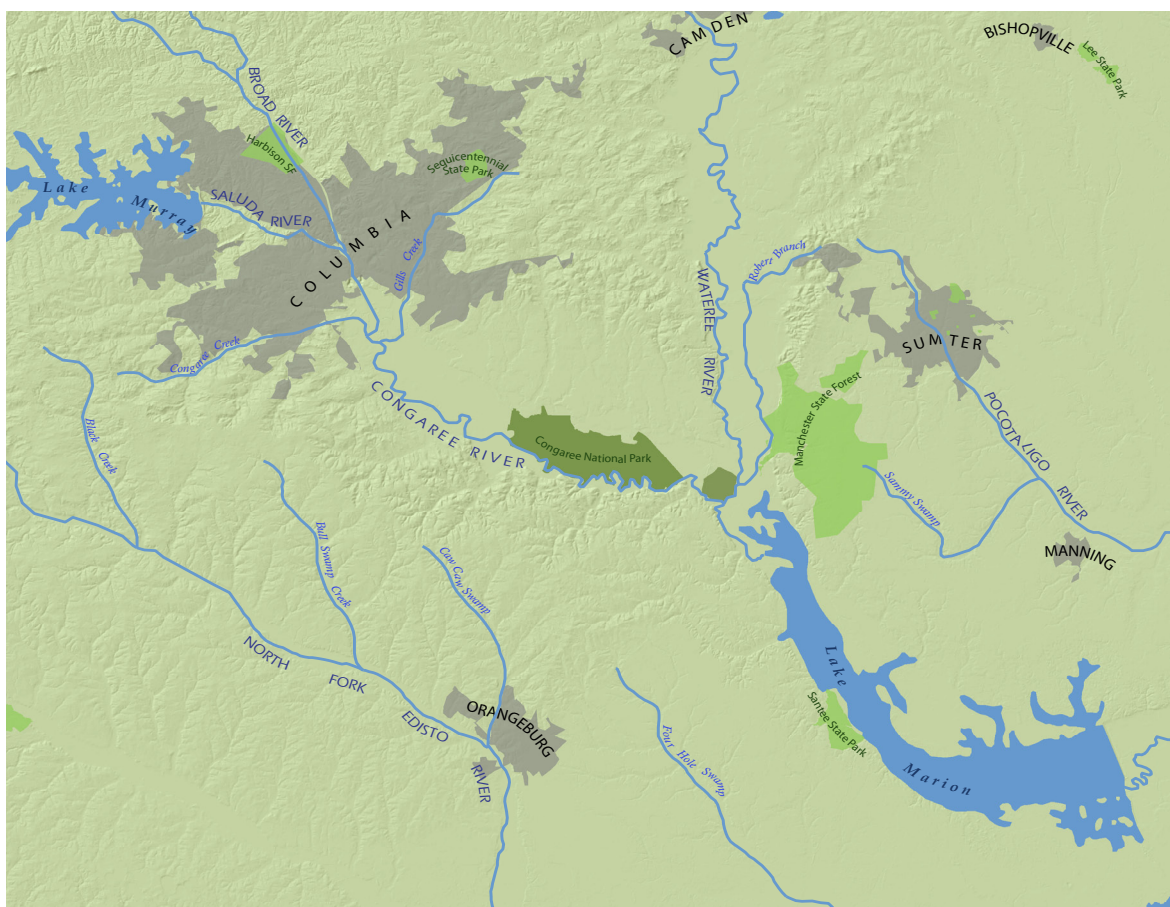
How To Get Here



To I-20 and Camden, via Highway 601 North

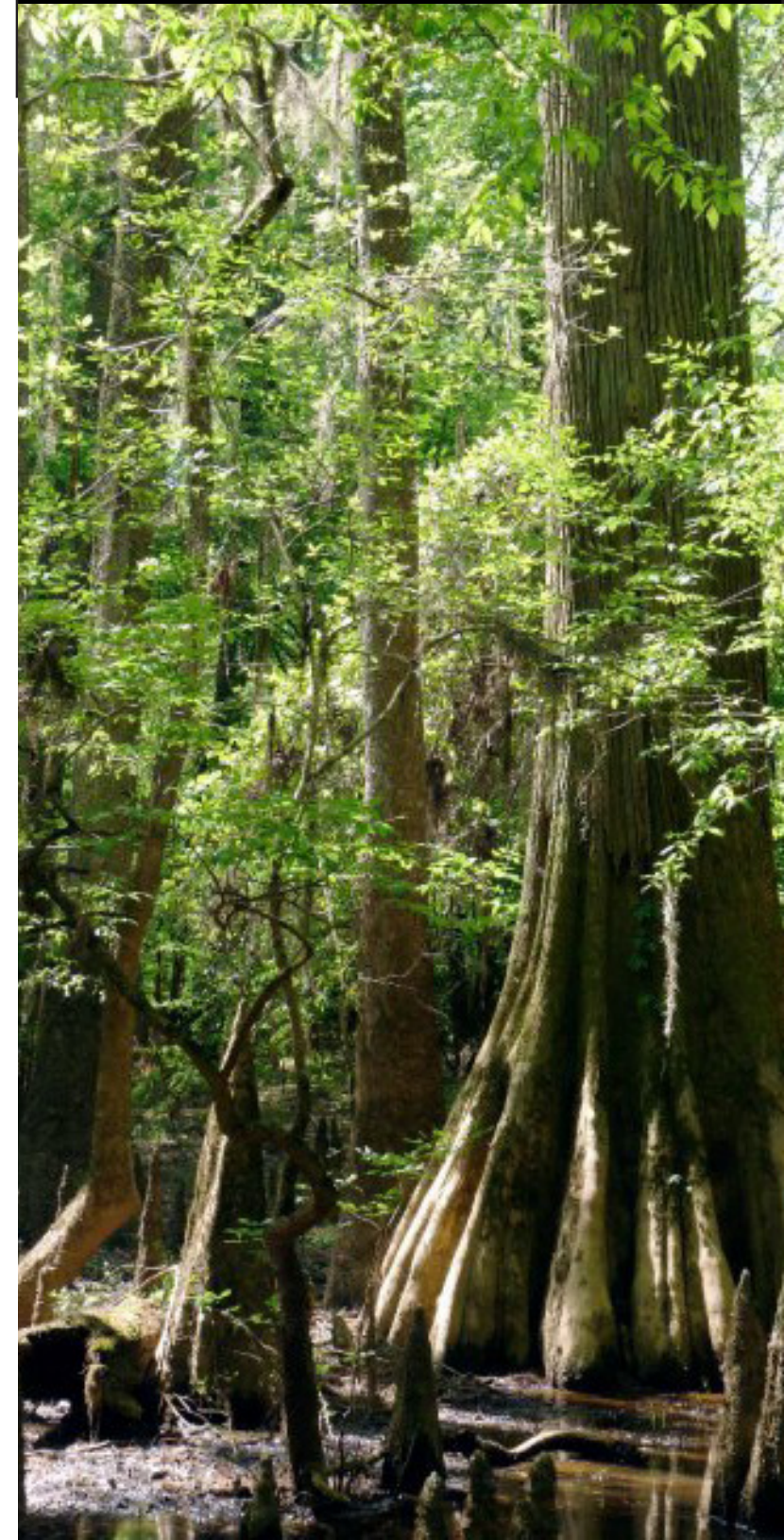
To I-26 and St. Matthews, via Hwy 601 South

How is the Congaree River connected to other waterways in the Midlands of South Carolina?



A Downy Woodpecker

Congaree National Park Trail Guide



Trail Descriptions

Elevated Boardwalk - 1.3 Miles

Take a hike through the park at a comfortable height to see an unusual variety, for a bottomland forest, of hardwoods and pines. The boardwalk starts at the Harry Hampton Visitor Center, dedicated soon after Congaree was designated a national park in 2003, which provides visitors with an overview of the park's history through a series of exhibits. The boardwalk ends at Weston Lake, an oxbow lake.

Low Boardwalk - 1.1 Miles

The Low Boardwalk follows the edge of the muck swamp, a swampy terrain dominated by bald cypress and water tupelo. It also passes near the old Ranger's Station, which is now a research center.

Bluff Trail - 1.7 Miles

Blue Blazes

This short trail shows off the park's low bluffs, which are covered with loblollies and mixed hardwoods. A second campground is off the small spur of the Bluff Trail.

Weston Lake Loop Trail - 4.4 Miles

Yellow Blazes

This trail follows Weston Lake's slough and Cedar Creek, giving the hiker nice views of medium-sized bald cypresses and tupelo.

Oakridge Trail - 6.6 Miles

Red Blazes

The Oakridge Trail goes through the heart of Congaree National Park: old-growth, bottomland forest. It also crosses a number of guts, or former stream beds.

River Trail - 10 Miles

White Blazes

This trail provides access to the Congaree River, best seen from a large sandbar (if the water isn't too high!). This area is among one of the most heavily logged in the park.

Kingsnake Trail - 11.7 Miles

Orange Blazes

The Kingsnake Trail follows a number of large sloughs and is more isolated than the other trails in the park, which means better wildlife viewing! At the trailhead is boat access to Cedar Creek, which is itself a "trail."

