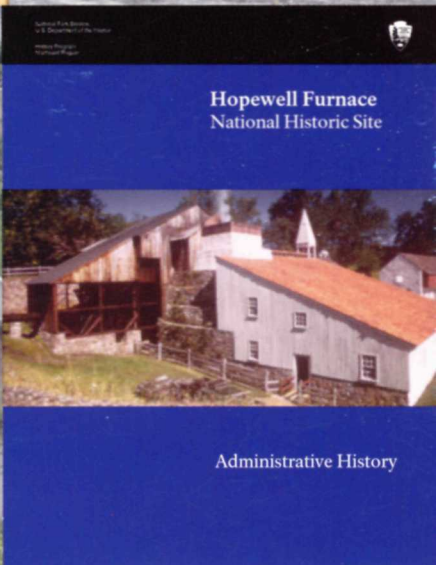




CULTURAL RESOURCES PROGRAMS IN THE NORTHEAST REGION



Hopewell Furnace
National Historic Site

Administrative History

FRONT COVER ILLUSTRATIONS

(clockwise from upper left)

Northern Canal Guard Gates Gate House - Lowell National Historical Park (aka Pawtucket Gate House)

George Washington ink and watercolor fraktur drawing on paper by the "Washington-Sussel Artist" circa 1785 (INDE 2768). Collections of Independence National Historical Park

Mitigation plan for waterproofing Sterling's Quarters, Valley Forge National Historical Park

Cover, *Hopewell Furnace National Historic Site Administrative History*

Gardens, Longfellow National Historic Site, Cambridge, MA

Marker indicating the site of the reinterment of the Delaware Indian burials uncovered on Ellis and Liberty Islands

CULTURAL RESOURCES PROGRAMS IN THE NORTHEAST REGION

Do you need a paint analysis to accurately determine the historic colors to be used in the restoration of an historic structure? Are you looking for technical training to guide specimen tree management or historic orchard preservation? Do you desire to have a Historic Resource Study to inform and support management priorities for a park's array of resources? Do you want to engage constituent groups who presently feel disconnected from park interests and values? These are but a few of the needs which can be capably addressed by the largest assemblage of cultural resource management professionals in any region in the country, namely the Northeast Region.

The Northeast Region is the most densely populated, ethnically diverse area of the United States, offering experiences to 55 million people at seventy-six park units representing more than 20% of the entire national park system. Given this rich heritage, it is not surprising our Northeast Regional park units contain an incredible concentration of cultural resources requiring the best possible management practices. For example, the region is home to:

- One quarter (27,000,000) of all museum collections in the national park system
- One quarter (330) of all cultural landscapes in the national park system
- One quarter (5,373) of all historic structures in the national park system
- An estimated 35,000 archeological sites

Given this magnitude and the programs that have been established and maintained to assist our national parks and partners, the Northeast Region has become a national leader in cultural resources management. These programs are often called upon to assist other regions in addressing their complex resource management needs.

The six park cultural resource programs which comprise the Cultural Resources Division with the Resource Stewardship & Science Directorate are described on the following pages. These include the:

- Archeology Program
- Historic Architecture Program
- History Program
- Northeast Museum Services Center
- Olmsted Center for Landscape Preservation

I invite you to contact our dedicated staff and to visit our offices and facilities to better understand and utilize the services we offer. All of our programs continue to look for ways to improve communication with the field and enhance customer service.



Keith Everett
Associate Director
Resource Stewardship & Science

ARCHEOLOGY PROGRAM

MISSION

The Northeast Archeology Group is committed to providing archeological resource management expertise in the Northeast Region to the following communities through a program of research, compliance, education, and information management. This program is authorized under the Organic Act of 1916, the National Historic Preservation Act of 1966 (as amended), the Archeological Resources Protection Act of 1979, and the Native American Graves Protection and Repatriation Act of 1990.

The Park Community: To provide accountable, efficient, uniform, integrated archeological services guided by the principle of resource conservation, incorporating archeological information with planning and resource management.

The Public Community: To assist parks in providing interpretation of archeological resources and in developing staff expertise in archeological interpretation. To assist parks with issues regarding the intersection of archeology and descendent communities.

The Academic Community: To participate in professional meetings by presenting papers and through co-sponsorship. To encourage publications, and create educational opportunities through cooperative agreements and internships.



Contract archeologists from KSK, Inc. reconstruct vessels from the Dexter Site, home of a prominent member of the early nineteenth-century Philadelphia African-American community.



Late 18th century transfer-printed pearlware bowl excavated at Fort Stanwix National Monument

SERVICES

- Policy guidance
- 106 compliance advice
- LIC archeology project management
- Inventory project management including Archeological Overviews and Assessments, Identification, and Evaluation Studies
- Archeological planning support
- Geophysical prospecting
- ASMIS database management
- ARPA damage assessments



Contract archeologists from John Milner Associates excavate a multiple privy feature, Block 2 of Independence Mall, Independence National Historical Park.

ETHNOGRAPHY PROGRAM



NAGPRA consultations with representatives of three Delaware tribes.
Delaware Water Gap National Recreation Area

MISSION

The Ethnography Program provides support and guidance to parks in the Northeast Region for the documentation, management, preservation, planning and interpretation of park resources that are culturally important to traditionally associated peoples and other park associated groups, and facilitates consultations and collaborative relationships with park neighbors and communities of interest. The program serves as the region's NAGPRA lead and offers technical and direct support for fulfilling park NAGPRA responsibilities. The program also serves as American Indian Liaison in the region, advising and assisting parks to establish and maintain government to government relationships with Indian tribes, and to conduct consultations with Indian tribes.

The screenshot shows a web page titled "9.11.01 REMEMBRANCE" with the National Park Service logo. The page features a navigation menu with links for HOME / MAP, ABOUT, DIRECTOR'S MESSAGE, REMEMBRANCES, RELATED LINKS, and CREDITS. The main content area is titled "Statue of Liberty/Ellis Island" and includes a photograph of the Statue of Liberty and the World Trade Center towers on September 11, 2001. Below the photo is a caption: "View of the Statue of Liberty as seen from the water on the morning of September 11, 2001 with the World Trade Center towers in the New York Skyline. Photo: National Park Service." To the right of the photo is a list of links: Interviews / Oral Histories, Photos, Ranger Speech, Remembrances from Statue of Liberty, Remembrances from Ellis Island, and Incident Report. Below the links is a paragraph of text: "Confronted with a sweeping view of the Manhattan skyline under siege, park staff were acutely aware that both the Statue and Ellis Island represented potential targets. Despite their fear and an unsettling sense of uneasiness, they responded swiftly to the crisis by immediately closing the park, evacuating all visitors, and stepping up security measures." Below this is another paragraph: "Four U.S. Park Police vessels, staffed with SWAT teams, were sent to secure the waters around both islands. Taking full advantage of their proximity to New York City, NPS staff quickly rallied their energies, resources and equipment to transport people and supplies via New York harbor and assist in medical evacuations of injured people from lower Manhattan." Below that is a paragraph: "A triage center for treating the wounded was set up on Ellis Island, and NPS staff were soon joined by dozens of EMT's, paramedics and emergency room physicians brought by boat from area towns and hospitals." Below this is a paragraph: "When the parks reopened three months later, interpretive staff were peppered with questions about the attack. 'We'll have to relive that day for years to the public,' says Gene Kuziw, interpreter at the Statue of Liberty, 'because the first question they ask is... where were the towers?'" At the bottom of the page are two links: "Click here for general information on Statue of Liberty, National Memorial." and "Click here for general information on Ellis Island, Immigration Museum." A "TOP" link is also present.

9.11 Remembrance web site featuring NPS responses at 12 parks around the country (2002).

SERVICES

Research

- Assists parks in planning, designing, monitoring and technical oversight for baseline and special ethnographic research projects
- Assists parks to identify, document and consult with park associated groups and the resources that are culturally important to them
- Assists parks to broaden management and interpretive perspectives by documenting the “whole story” at parks

NAGPRA

- Explains to park managers when NAGPRA applies to the park, including provisions concerning museum collections, planned excavations, inadvertent discoveries, consultations, and tribal MOAs
- Designs and coordinates NAGPRA research projects including cultural affiliation studies, osteological documentations of human remains, and object documentations
- Assists parks to conduct effective NAGPRA consultations with Indian tribes
- Coordinates and writes NAGPRA Plans of Action, Comprehensive Agreements, and MOUs

American Indian Liaison

- Assists parks to identify park-associated Indian tribes and groups and carry out Section 106, NAGPRA and NEPA consultations and procedures on a government-to-government basis
- Writes MOUs for establishing government to government relations between parks and tribes
- Trains and educates parks and regional staff (planning, compliance) about how to consult with Indian tribes under Section 106 and NAGPRA, and federal Indian laws and policies



Dune shack used by Harry Kemp, “Poet of the Dunes,” Cape Cod National Seashore, (2004)



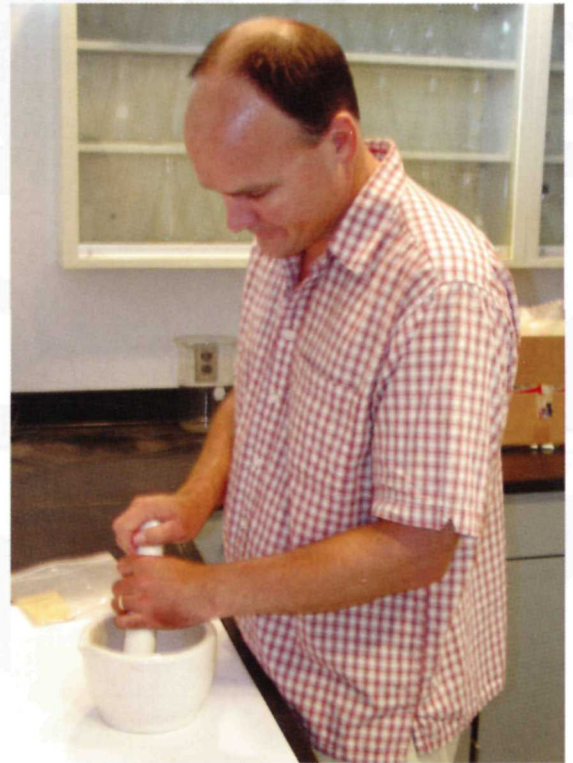
Four Provincetown women at the Tasha Shack, Cape Cod National Seashore (2004). These two photographs are from a study of the traditional cultural significance of the dune shacks of the Peaked Hill Bars Historic District, Cape Cod (2005).

HISTORIC ARCHITECTURE PROGRAM

MISSION

The Northeast Region Historic Architecture Program (HAP) provides leadership and coordination for research and planning activities undertaken to preserve the more than five thousand historic structures in the Northeast Region (NER). The program assists parks with achieving both short and long-term goals regarding historic structure preservation. Specific program activities include research, inventory, documentation, building materials analysis, treatment planning, technical assistance and training.

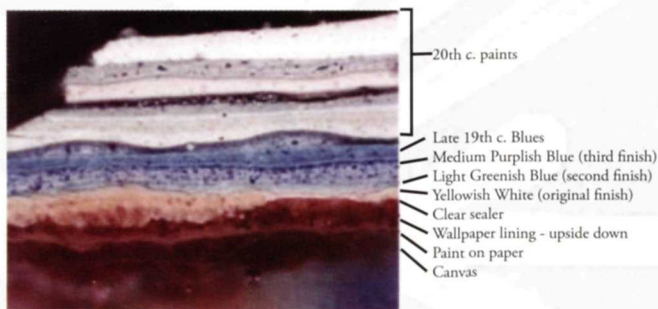
The Historic Architecture Program is dedicated to providing responsible stewardship for historic structures in the Northeast Region. The program team brings a depth of knowledge and breadth of expertise to projects that support regional and park staff in the management of historic structures, incorporating learned awareness of the latest developments in historic preservation and NPS policies, regulations, and initiatives. The Program is committed to providing interdisciplinary support in the planning process and quality products and services.



Architectural Conservator James Lee III begins mortar analysis by grinding a sample.

SERVICES

- assists in strategic planning to define regional priorities regarding historic structures research and planning
- assists parks and NER senior management with the interpretation and application of federal cultural resources management laws, regulations, and executive orders, and NPS policies, guidelines, standards, and technical information to ensure consistent treatment of historic structures throughout the region
- works with parks and heritage areas, other cultural resources programs within the region, and other directorates to formulate interdisciplinary approaches to research and planning efforts



Photomicrograph of a paint sample from an early 18th century architectural element (under magnification).

- prepares Historic Structure Reports (HSRs), conducts building materials analysis, and reviews and contributes to a variety of related planning documents
- maintains the List of Classified Structures (LCS) for the Northeast Region
- provides technical assistance to parks and heritage areas related to planning and compliance issues, and for preparing scopes of work and PMIS project statements
- provides advice for NEPA and Section 106 compliance upon request
- participates in preplanning activities such as Value Analyses
- develops training for park, regional, and national staff in areas of historic structure research, investigation, inventory, documentation, building materials analysis, and planning
- serves as point of contact with the Washington Office's Park Historic Structures and Cultural Landscape Program for historic structures
- participates in professional and trade organizations and with academic institutions and other public/private groups to share information and promote the advancement of the architectural preservation field



Ironworks House (17th Century), Saugus Ironworks National Historic Site.



"The rude bridge," Concord Bridge, Minute Man National Historical Park.



Wallpaper sample from the Russian Bishop's House, Sitka National Historical Park.

HISTORY PROGRAM

MISSION

The History Program supports park resource management and interpretation through historical research and historic property evaluation. The program coordinates the region's efforts in documenting park properties eligible for the National Register of Historic Places. The information gained through research and documentation supports general management planning, treatment of historic resources, interpretation, and strategic planning. Research findings and documentation provide critical information to support day-to-day resource management decision making. The program accomplishes its works through in-house assistance to parks and by contract; and by working cooperatively with academic institutions, state historic preservation offices, and nonprofit organizations.

SERVICES

Historical Research

The History Program assists parks in undertaking and directly manages baseline historical research:

- Historic Resource Studies
- Administrative Histories

Section 110

The History Program assists parks and other CRM programs in fulfilling their responsibilities under Section 110 of the National Historic Preservation Act. Specific program activities include:

- Review of NPS List of Classified Structure and Cultural Landscape inventory data
- Project management for National Register documentation
- Technical guidance, review, and processing of historic property evaluations

Other Activities

Specific staff activities include:

- General Management Planning consultation and support
- Special Resource Studies consultation and support
- Facilitating historians site visits and evaluations
- Serving on park Section 106 CRM teams



RECENT PROJECTS

Martin Van Buren NHS Historic Resource Study explores the Van Buren's central involvement in the politics of anti-slavery as well as the personal side of Van Buren life in the 1840s and 1850s. The research will be used in revising the park's interpretive themes and for GMP planning.

Sagamore Hill Administrative History traces the history of planning and development issues that date to the origin of the park and provides present day planners and managers with information vital to current decision-making.

Historic Resources of Acadia National Park Multiple Property Documentation Form addresses comprehensively for the first time in the park's history designed historic, architectural, and landscape resources. This documentation will facilitate future compliance. This is the first MPDF in the Northeast Region.

NORTHEAST MUSEUM SERVICES CENTER



NMSC technical assistance projects at Fort Stanwix National Monument, Petersburg National Battlefield and Colonial National Historical Park.

MISSION

The Northeast Museum Services Center was established to provide direct technical support to parks in the Northeast Region in the preservation, protection, management, documentation, and conservation of museum collections. Working in partnership with national parks, universities, government agencies, and private nonprofit organizations, NMSC provides a full range of technical assistance in museum collections research, planning, and stewardship to care for the Region's more than 27 million archives and objects. The NMSC is the only center servicewide that provides comprehensive museum expertise to assist parks in managing museum collections.

SERVICES

The work of the Northeast Museum Services Center is organized into four inter-related program areas.

Cataloging

The NMSC assists parks with the processing and cataloging of archives, archeology and history collections.

Specific program activities include:

- General oversight of Backlog Cataloging Program
- Survey, cataloging and production of finding aids for historic archival collections and park resource management records
- Identifying, sorting, classifying and cataloging archeological collections
- Managing the NER Cultural Resources Bibliography (CRBIB) Library program

Research and Planning

The NMSC assists parks with baseline data to provide solutions for all aspects of each curatorial program.

Specific program activities include:

- Collection Management Plans
- Collection Storage Plans
- Historic Furnishing Reports
- Historic Furnishing Assessments
- Historic Resource Studies
- General Management Plans consultation and support
- Section 106 assistance

Collections Conservation

The NMSC assists parks with preventative maintenance and treatment of museum collections including outdoor sculpture.

Specific program activities include:

- Collections Conservation Surveys
- Conservation treatment of historic and decorative arts objects

- Environmental Surveys
- Housekeeping Plans
- Integrated Pest Management Plans for Museum Collections

Technical Assistance

NMSC assists parks through general technical assistance and coordination of on-site technical projects.

Specific program activities include:

- Oversight of the Museum Collection Preservation and Protection Program
- Coordination of technical assistance to implement collection storage planning
- Training in curatorial methods and preventive conservation
- Internships
- Policy development and review related to collections
- Coordination of the NER Cultural Resources Emergency Response Team



Conservator Margaret Breuker cleaning a status of Champlain at St. Croix Island International Historic Site.

OLMSTED CENTER FOR LANDSCAPE PRESERVATION



Rustic fencing restored at Weir Fram National Historic Site in 2003 based on historical research documented in a Cultural Landscape Report prepared by the Olmsted Center.

MISSION

The Olmsted Center for Landscape Preservation strengthens the capacity of parks to manage cultural landscapes as part of our national heritage. Working in partnership with national parks, universities, government agencies, and non-profit organizations, the Olmsted Center provides a full range of technical assistance in cultural landscape research, planning, stewardship, and education. In collaboration with the Frederick Law Olmsted National Historic Site, the Olmsted Center perpetuates the traditions of the Olmsted Offices and Frederick Law Olmsted, Sr.'s lifelong commitment to people, parks, and public spaces.

SERVICES

RESEARCH AND PLANNING

Historical research defines the features, values, and associations that make a landscape historically significant and furthers knowledge regarding the importance of individual cultural landscapes. Preservation planning establishes the framework for sound stewardship, ensuring that future treatment and maintenance provides long-term protection of these resources. Olmsted Center research and planning projects include:

- Cultural Landscapes Inventory
- Cultural Landscape Reports
- Preservation Maintenance Plans
- Landscape Stabilization and Protection Plans
- Historic Plant Inventories
- Pre-construction planning
- Section 106 compliance



In collaboration with Richmond National Battlefield Park, the Olmsted Center coordinated a servicewide training on assessing condition and stabilizing hazardous trees. Participants accomplished critical hazard reduction work on more than twenty five trees at the park.

STEWARDSHIP

Stewardship seeks to protect historic materials and maintain the historic character of cultural landscapes. Sustainable preservation maintenance, involving a wide range of stabilization and resource protection activities, is essential to preserve these resources. Multi-park crew projects, organized by the Olmsted Center, provide preservation maintenance services to address immediate health and safety issues or serious resource deterioration. Examples of Olmsted Center stewardship projects include:

- Facility Management Software System (FMSS)
- Maintained Landscape Condition assessments and park application
- Field project scoping and management
- Cyclic preservation maintenance work
- Resource protection and emergency stabilization
- Historic specimen tree and orchard preservation
- Construction mitigation
- Treatment implementation
- Historic plant propagation and nursery growing

EDUCATION

Education provides professional development opportunities and training that enhance skills and abilities in preservation practice, and builds the capacity of parks to preserve their cultural landscapes. The Olmsted Center organizes training programs and workshops, and disseminates information on the principles and techniques of preservation practice. Training programs involve upward mobility and career development, along with opportunities for cross training through staff exchange. Examples of projects include:

- Cultural landscape management workshops and conferences
- Preservation maintenance skills training
- Apprenticeships, internships, and work details
- Interpretive Brochure Series
- Arborist Training Program
- *Clippings*, a technical information series on concepts and techniques for maintaining cultural landscapes



Mature sugar maple on the edge of a plantation at Marsh-Billings-Rockefeller National Historical Park.

BACKDROP IMAGES

Archeology Program: *Plan Sections and Details*. Jamestown excavations of 1958, drawn by Russell Jones. From the archives of Colonial National Historical Park (COLOJ 45006).

Historic Architecture Program: Wallpaper sample from the Russian Bishop's House, Sitka National Historical Park.

History Program: Photograph of Hopewell Furnace ca. 1920 From the archives of Hopewell Furnace National Historic Site (HOFU 35420).

Northeast Museum Services Center: Postcard, Alexander Wadsworth Longfellow (1854-1934) to Alice Mary Longfellow (1850-1928), 2 September 1927. Alexander Wadsworth Longfellow Papers. Courtesy of the Longfellow National Historic Site.

Olmsted Center for Landscape Preservation: Olmsted Lithograph Collection, Olmsted Job #918 Franklin Park, Boston, MA. General Plan of Franklin Park, 1891. F.L. Olmsted and Co., Landscape Architects (Boston: Heliotype Printing Co., n.d.). Courtesy of the Frederick Law Olmsted National Historic Site.

RIGHT (TOP TO BOTTOM)

Spring Box, Booker T. Washington National Monument

Victory, Sherman Monument (1897-1902). Bronze Reduction, 1912. 40x14x22 inches. Saint-Gaudens National Historic Site (SAGA #940), Gift of Charles D. Norton, 1924.
Photo: Jeffrey Nintzel

Carriage House, Adams National Historic Park



PROGRAM CONTACTS

Archeology Program

Allen H. Cooper
Manager, Northeast Region Archeology Program
200 Chestnut Street
Philadelphia, PA 19106
Office: 215.597.1099
Fax: 215.597.5747
Mobile: 267.767.3247

Ethnography Program

Chuck Smythe
Manager, Northeast Region Ethnography Program
15 State Street
Boston, MA 02109
Office: 617.223.5014
Fax: 617.223.5260

Historic Architecture Program

Peggy A. Albee
Manager, Northeast Region Historic Architecture Program
115 John Street - 4th Floor
Lowell, MA 01852
Office: 978.970.5131
Fax: 978.970.5121

History Program

Paul Weinbaum
Manager, Northeast Region History Program
15 State Street
Boston, MA 02109
Office: 617.223.5057
Fax: 617.223.5195
Mobile: 617.413.7212

Northeast Museum Services Center

Sara J. Wolf
Director, Northeast Museum Services Center
Building I, Charlestown Navy Yard
Charlestown, MA 02129
Office: 617.242.5613 x 13
Fax: 617.242.1833
Mobile: 617.438.6058

Olmsted Center for Landscape Preservation

Bob Page
Director, Olmsted Center for Landscape Preservation
15 State Street
Boston, MA 02109
Office: 617.223.5099
Fax: 617.223.5158
Mobile: 617.680.1064

BACK COVER ILLUSTRATIONS

(clockwise from upper left)

Multi-park team of arborists mobilized by the Olmsted Center to stabilize hazardous trees and improve cultural landscape condition at Edison National Historic Site.

NMSC and park staff preparing collections for a move to a new collections facility at Fort Stanwix National Monument.

Conservator Carol Warner cleaning the bust of *Jupiter of Otricoli* (LONG 4337) at Longfellow National Historical Site (classical copy in painted plaster).

Archeological mitigation for the National Archives and Records Administration (NARA) library at the Home of Franklin D. Roosevelt National Historic Site uncovered the remains of a greenhouse on the adjacent Bellefield Estate.

Senior Architectural Conservator Barbara Yocum conducts paint analysis using the magnification of a binocular zoom microscope.

