



# CRATER LAKE NATIONAL PARK

OREGON



UNITED STATES  
DEPARTMENT OF THE INTERIOR

HAROLD L. ICKES, Secretary

-----  
NATIONAL PARK SERVICE

ARNO B. CAMMERER, Director

-----  
CRATER LAKE NATIONAL PARK  
Oregon

Cupped in the crater of an extinct volcano in the Cascade Range of southern Oregon, Crater Lake is an inspiring and unsurpassed blend of scenic and scientific values. The lake, the central feature of the park, is famous for its ever-changing hues of blue and patterns of color. It is 20 square miles in extent, 2,000 feet deep, has a maximum diameter of 6 miles, and is surrounded by precipitous tree-mantled slopes and sheer rock cliffs that rise 500 to 2,000 feet above the water. The crater walls frame the lake in color and grandeur and tell the story of the building and destruction of a mighty volcano whose peak once stood where now there is a vast crater cupping a lake. Rising out of the water are two islands, the Phantom Ship and Wizard Island. The latter is a perfect example of a volcanic cone and evidence of an eruption, occurring after the mighty forces of nature formed the crater in which Crater Lake rests.

The gentle slopes which visitors ascend in approaching the lake are mantled with virgin stands of pine, hemlock, and fir. There are meadows of colorful wild flowers. Throughout the forests are many species of birds and small mammals, as well as deer and black bear.

Llao Rock and Wizard Island





## ADMINISTRATION

The park is administered by the National Park Service of the United States Department of the Interior. E. P. Leavitt, superintendent, is in immediate charge, maintaining offices at headquarters in the park during the summer and in Medford during the winter. The superintendent has supervision of all activities in the park, including protection, development, and services rendered by the utilities operator.

## RULES AND REGULATIONS

Regulations are designed for the protection of the park and the comfort and convenience of visitors. Following is a synopsis of park regulations. Complete information is available at park headquarters.

Fires - Light fires only in designated campgrounds. Know your fire is out.

Camps - Camping permitted only in designated campgrounds. Limited to 30 days.

Natural Features - Destruction, injury, or disturbance of the flora, fauna, and other natural features is prohibited. It is unlawful to feed, tease or molest the bears.

Dogs - Dogs are prohibited in the park overnight and are not permitted in the rim concentration area. When not in an automobile, dogs must be on leash.

Fishing - Catch is limited to 12 fish per day per person. No license necessary.

## ACCOMMODATIONS

The park is open all year, although in the winter accommodations are limited.

Camping - During the summer months the park maintains four free public campgrounds, one in the Rim Village having all modern conveniences, and three at lower elevations with somewhat limited facilities.

Overnight, Meals, and Transportation - Crater Lake National Park Company, operating under contract with the Federal Government, provides all expense accommodations including hotel, dining room, cabin, cafeteria, and store which are available in the Rim Village from June 10 to September 20. There is daily round-trip bus service from Klamath Falls and Medford from July 1 to September 20. During July and August the company operates launches on the lake and maintains rowboats for fishing.

Telephone and Telegraph - This service is available at park headquarters.

Winter Accommodations - From September 20 to June 10 meals are available at park headquarters. Overnight accommodations available 20 miles outside the park.

## WHAT TO DO AND SEE AT CRATER LAKE

Sinnott Memorial - Located in the Rim Village, visitors should see this station first. Displays, field glasses, and a naturalist will assist visitors in becoming oriented with respect to the scenic and scientific features of the park.

Information Building - In this building, located in the Rim Village, information service and displays are maintained for public use. A naturalist is on duty.

Rim Road - The 35-mile drive over the new road on the rim of Crater Lake offers excellent views of the lake and region extending for miles beyond the park. Trails to interesting points lead off the rim road. In entering the park, visitors should plan to utilize the rim road.

Watchman Fire Lookout - Located on a high peak on the west rim of Crater Lake, this lookout offers exceptional views of the lake and surrounding region. The peak is accessible by a half-mile trail from the rim road. A ranger stationed on the peak explains to visitors the work of forest protection.

Mt. Scott Fire Lookout - This lookout, accessible by a 2½-mile trail from the rim road, is located on the highest point in the park. A ranger is on duty.

Pinnacles - On the walls of Wheeler Creek Canyon, along the east entrance road, erosion has produced many fantastic spires known as the Pinnacles.

Castle Crest Wild Flower Garden Trail - Located at park headquarters, this half-mile trail leads through a natural garden rich in colorful alpine flowers.

Sunset Point Trail - A 1-mile scenic trail on the west rim of Crater Lake.



Crater Wall Trail - This 1½-mile trail leads from the Rim Village to the lake. The beauty and magnitude of Crater Lake cannot be fully appreciated until one has reached the water's edge.

Launch Trips - During July and August launches make daily trips around the lake and to Wizard Island. For scenic beauty, launch trips on Crater Lake are unsurpassed.

Wizard Island - The summit of the island, 800 feet above the lake, is accessible by a trail offering many excellent views of the lake and crater.

Fishing - During July and August rowboats are available at the foot of the Crater Wall Trail. No license is required to fish in Crater Lake. The limit catch is 12 fish per person per day.

Guide Service - During the summer a regular daily schedule of hikes, launch trips, and auto caravans is conducted by the ranger naturalist staff. Short lectures are given daily at the Sinnott Memorial, Lodge, and Community House. Inquire at the Information Building for a schedule of activities.

#### HOW TO REACH THE PARK

The Southern Pacific Railroad serves the park via Klamath Falls, 62 miles south, and Medford, 82 miles west of the park. Daily bus service is available from either city between July 1 and September 20.

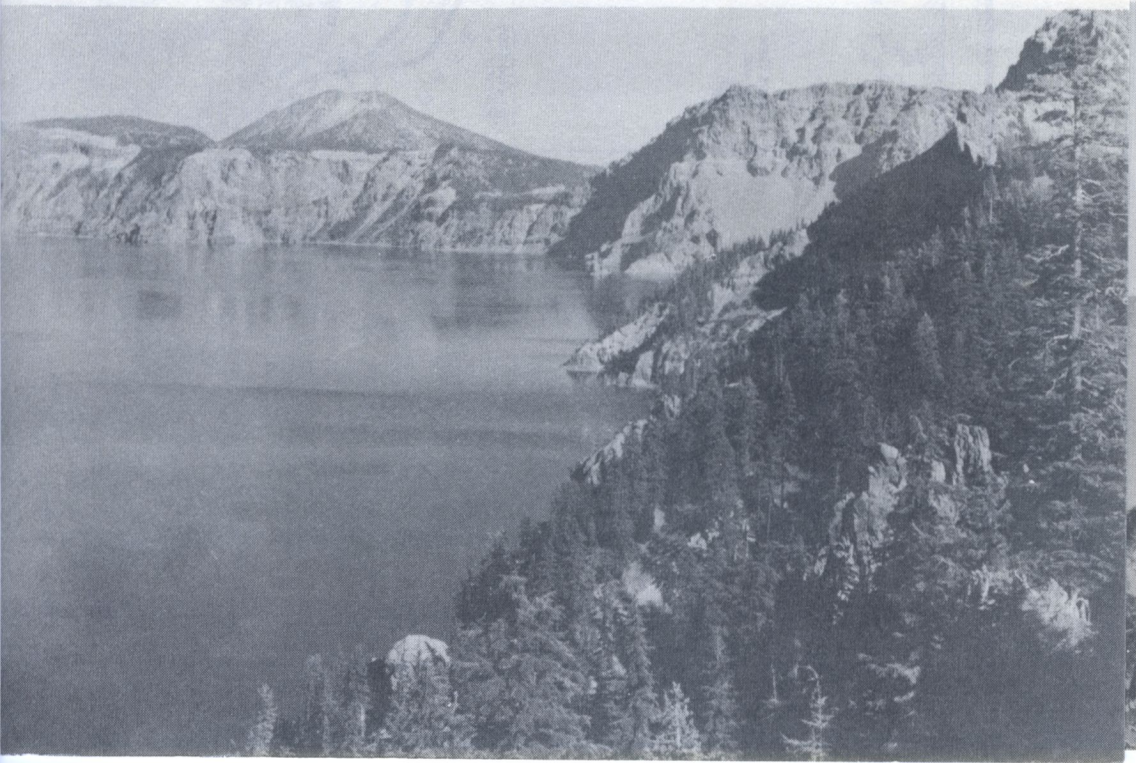
Paved highways lead into the park from main north-south highways, U. S. 97 on the east, and U. S. 99 and 101 on the west.

United Air Lines maintains daily plane service through Medford.

Pacific Greyhound Lines operate through Klamath Falls and Medford.

April 1939

Mount Scott and Crater Lake

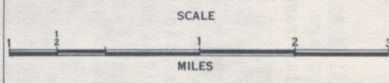






**LEGEND**

- Automobile roads
- Trails
- Fire Lookout
- Distances given are by road



TO CHILOQUIN 20 MILES.  
KLAMATH FALLS 45.7 MILES.  
ASHLAND 113 MILES. (R. R. STATION)

SOUTH ENTRANCE