



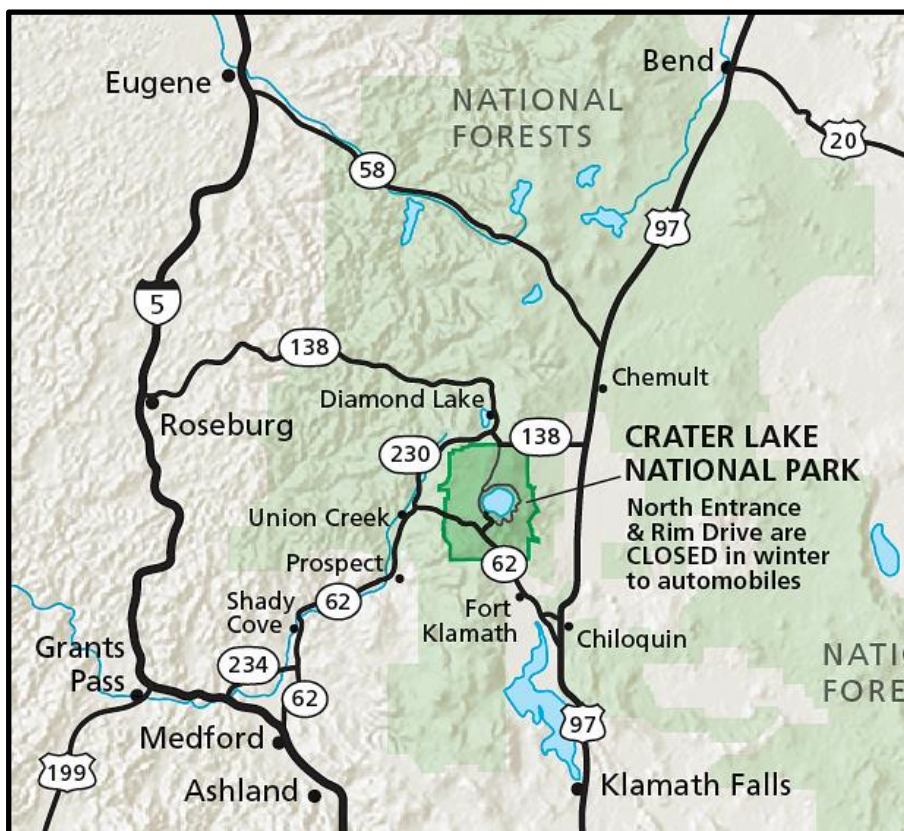
Lodging & Camping (Winter)

There are no lodges, campgrounds, or gas stations open in the park from mid-October to late May.

Below is a list of the nearest accommodations outside the park that are open year-round. More options can be found in Shady Cove (55 miles from Park Headquarters), Klamath Falls (57 miles), Chemult (71 miles), and other cities in southern Oregon.

Staying overnight inside the park requires a backcountry permit. Permits are available free of charge at Park Headquarters during business hours, which are typically 10 am to 4 pm daily in the winter. Backcountry campers must travel at least 1 mile from their vehicle in order to camp. Sleeping in vehicles is not allowed.

The closest year-round gas stations are in Prospect, Chiloquin, and Diamond Lake.



Fort Klamath & Vicinity

20 miles south of Park Headquarters

Annie Creek Sno-Park

Overnight parking and camping. Vault toilets and shelter. No water. Sno-Park permit required Nov. 1-April 30. 1/4 mile south of the park on Hwy 62. www.oregon.gov/odot

Crater Lake Bed & Breakfast

3 rooms. Pets welcome. Just south of Fort Klamath on Weed Rd. (866) 517-9560, www.craterlakebandb.com

Crater Lake Resort

7 cabins. Pets welcome. 2 miles south of Fort Klamath on Hwy 62. (541) 381-2349, www.craterlakeresort.com

Jackson F. Kimball State Park

11 campsites. Vault toilets, no water. Open April 1-Dec. 21 (weather permitting). 4 miles north of Fort Klamath off Dixon Rd. (541) 783-2471, www.oregonstateparks.org

Jo's Motel & Campground

5 rooms, 7 RV sites w/hookups, 5 tent sites. Campground may close during cold/snowy weather. Organic grocery store and deli. (541) 381-2234, www.josmotel.com

Sun Mountain Ranch

Family-owned vacation home available for rent. 1 mile south of the park on Hwy 62. (541) 538-0426, www.sunmountainranch.com

Union Creek & Vicinity

21 miles
west of Park
Headquarters

Farewell Bend Sno-Park

Overnight parking and camping. Vault toilets, sled hill. No water. Sno-Park permit required Nov. 1-April 30. 20 miles west of Park Headquarters on Hwy 62. www.oregon.gov/odot

Union Creek Resort

9 lodge rooms and 23 cabins. General store and restaurant. Cross-country ski and snowshoe rentals. Sno-Park permits for sale. Pets welcome. (866) 560-3565, www.unioncreekoregon.com

Thousand Springs Sno-Park

Overnight parking and camping. Vault toilets and shelter. No water. Sno-Park permit required Nov. 1-April 30. 14 miles west of Park Headquarters on Hwy 62. www.oregon.gov/odot

Prospect

32 miles
west of Park
Headquarters

Crater Lake RV Park

57 RV sites w/hookups. Showers. On Hwy 62. (541) 560-3399, www.craterlakerv.com

Prospect Historic Hotel

10 hotel and 14 motel rooms. Pets welcome in motel only. Off Hwy 62 on Mill Creek Dr. (800) 944-6490, www.prospecthotel.com

Chiloquin & Vicinity

33 miles
south of Park
Headquarters

Lonesome Duck Ranch

2 guest houses. On Hwy 97, just south of Hwy 62. (541) 783-2783, www.lonesomeduck.com

Sportsman's River Retreat

22 RV sites w/hookups. Tent sites. Modoc Point Road. (541) 783-3857, www.campingfriend.com/sportsmansriverretreat

Melita's Motel

13 rooms. Restaurant. Hwy 97. (541) 783-2044, www.melitascraterlake.com

Water Wheel Campground

33 RV sites w/hookups. Tent sites. Showers, laundry. On Hwy 97, just south of Hwy 62. (541) 783-2738, www.waterwheelrvpark.com

Diamond Lake & Vicinity

47 miles
north of Park
Headquarters

Diamond Lake Resort

50 motel rooms, 40 cabins. Restaurant, store, gas station. Cross-country ski, snowshoe, and snowmobile rentals. Guided trips, snowcat trips, and tubing hill. Pets welcome. (541) 793-3333, www.diamondlake.net

Toketee Campground

33 sites in the Umpqua National Forest. Vault toilets. No water or hookups. Maximum vehicle length 30 feet. 22 miles west of Diamond Lake off Hwy 138. (541) 498-2531, www.fs.usda.gov/recareal/umpqualrecareal?recid=63630

Lemolo Lake Resort

4 motel rooms, 11 cabins. General store. Pets welcome. 12 miles north of Diamond Lake, off Hwy 138 on Birds Point Rd. (541) 643-0750, www.lemololakeresort.com

Whispering Pines Motel

10 rooms. Store. Pets welcome. Open year-round. 15 miles east of the park's North Entrance at the junction of Hwy 138 and Hwy 97. (541) 365-2222