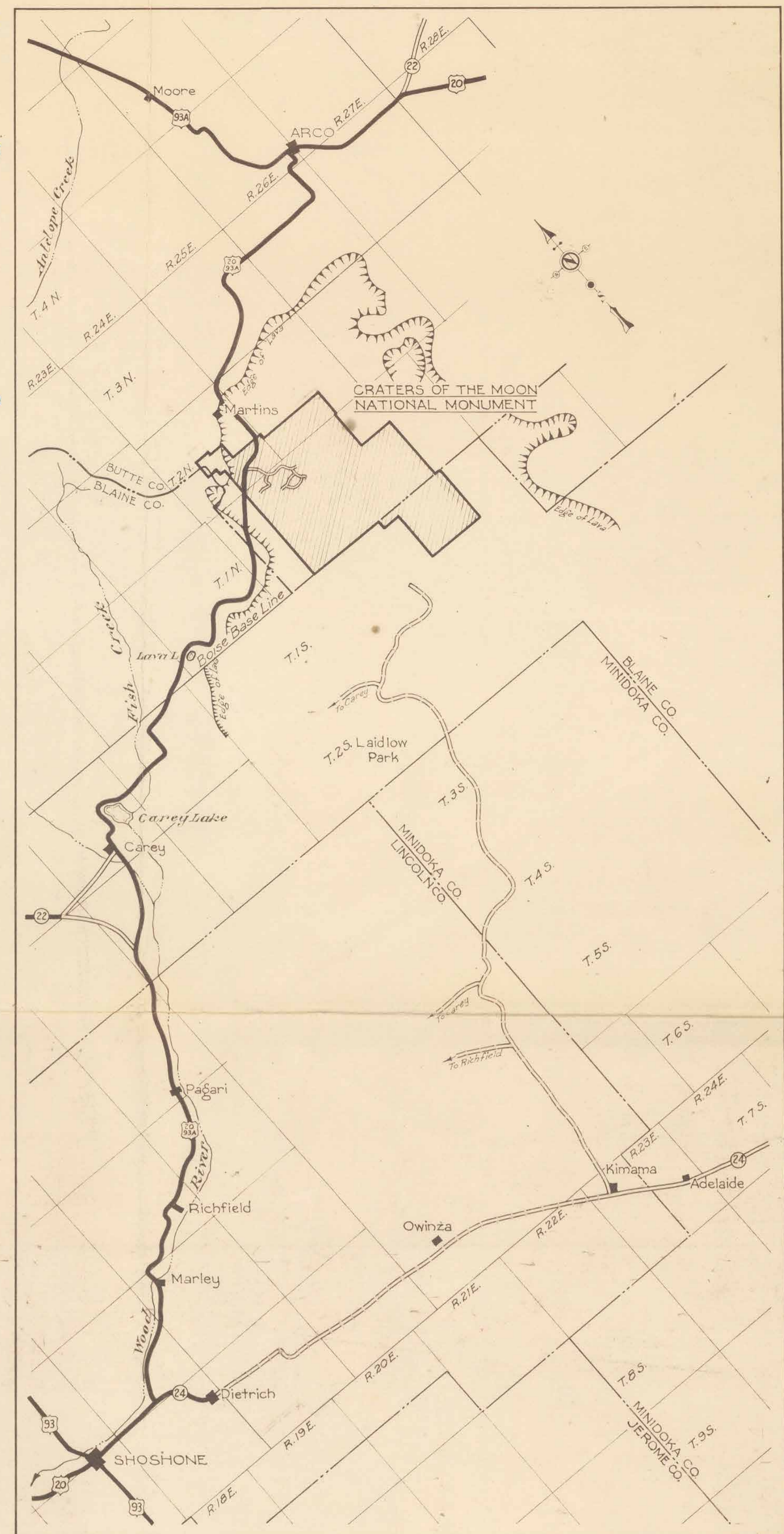
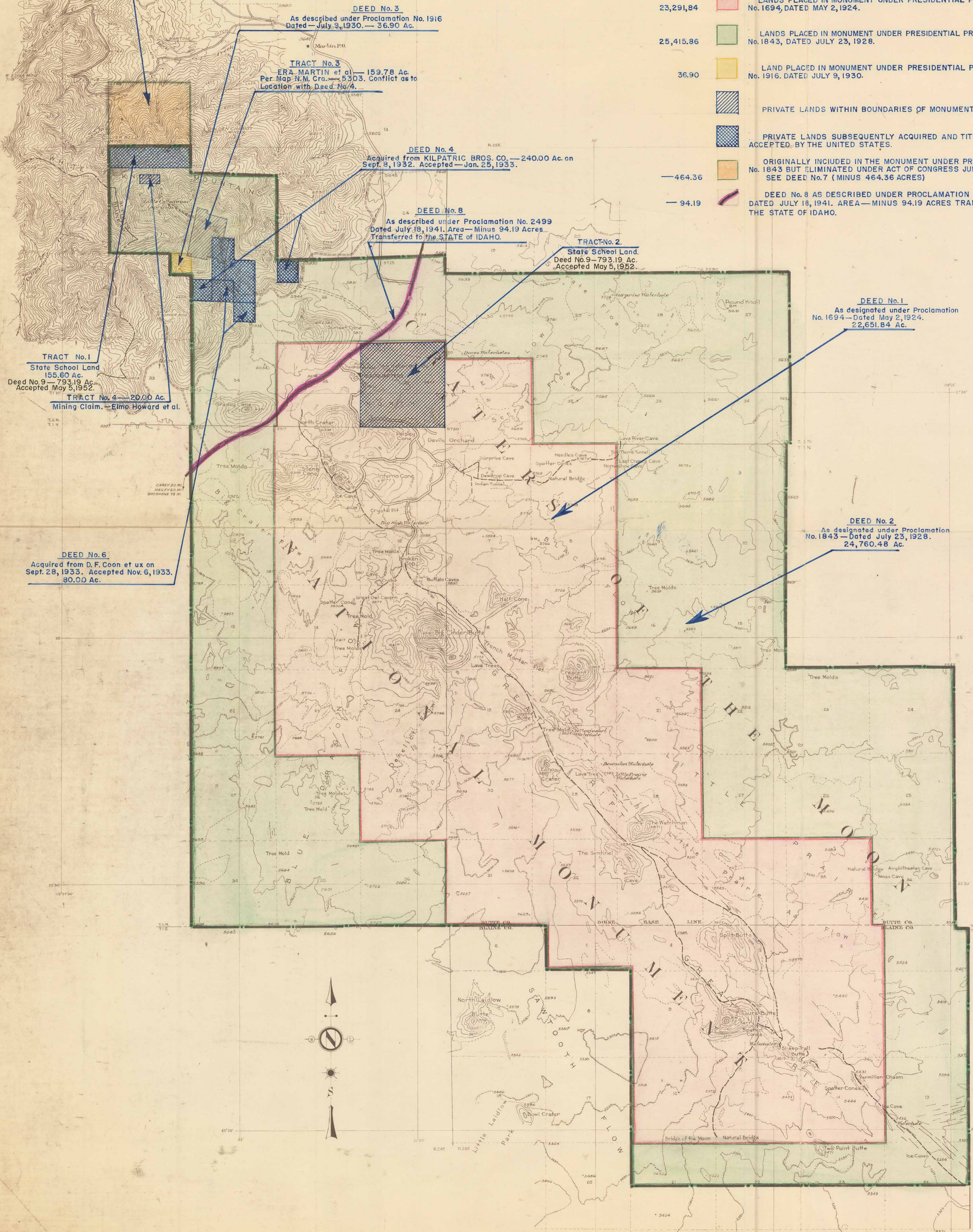


ORIGINALLY INCLUDED WITHIN MONUMENT UNDER PROCLAMATION No. 1843 BUT ELIMINATED UNDER ACT OF CONGRESS DATED JUNE 5, 1936. SEE DEED No. 7 (MINUS 464.36 ACRES).

TOTAL ACRES

LEGEND

- 23,291.84 LANDS PLACED IN MONUMENT UNDER PRESIDENTIAL PROCLAMATION No. 1694, DATED MAY 2, 1924.
- 25,415.86 LANDS PLACED IN MONUMENT UNDER PRESIDENTIAL PROCLAMATION No. 1843, DATED JULY 23, 1928.
- 36.90 LAND PLACED IN MONUMENT UNDER PRESIDENTIAL PROCLAMATION No. 1916, DATED JULY 9, 1930.
- PRIVATE LANDS WITHIN BOUNDARIES OF MONUMENT.
- PRIVATE LANDS SUBSEQUENTLY ACQUIRED AND TITLE ACCEPTED BY THE UNITED STATES.
- 464.36 ORIGINALLY INCLUDED IN THE MONUMENT UNDER PROCLAMATION No. 1843 BUT ELIMINATED UNDER ACT OF CONGRESS JUNE 5, 1936. SEE DEED No. 7 (MINUS 464.36 ACRES)
- 94.19 DEED No. 8 AS DESCRIBED UNDER PROCLAMATION No. 2499 DATED JULY 18, 1941. AREA—MINUS 94.19 ACRES TRANSFERRED TO THE STATE OF IDAHO.



APPROACH ROAD & VICINITY MAP

UNITED STATES
DEPARTMENT OF THE INTERIOR
NATIONAL PARK SERVICE

CRATERS OF THE MOON NATIONAL MONUMENT

TOPOGRAPHIC BASE MAP
BRANCH OF ENGINEERING
1946

SCALE 1/2 2MI.

CONTOUR INTERVALS 50 FEET
BOISE BASE & MERIDIAN

- LEGEND**
- MON. BOUNDARY
 - PAVED ROAD
 - DIRT ROAD
 - LAVA FLOW
 - GRADED ROAD
 - TRAIL

COMPILED BY	TRACED BY	CHK. BY	REVISED	REVISED
EL AVESCA	EL AVESCA	EL AVESCA	11-19-46	

Compiled From U.S.G.S. Base Map And Other Sources.

DRWG. NO. NM-CRA 4946C