

Congress, which authorized \$34.5 million for land acquisition and \$500,000 for facilities over a five-year period, made a first appropriation of \$5 million for the year ending Sept. 30, 1976 and will double this for the 1977 fiscal year. The Ohio General Assembly voted to turn over 3,200 acres of state-owned land to the park. Many home owners will stay where they are in this green haven, retaining life estate or full ownership with a promise that the scenic status quo will be maintained.

The park is becoming a reality. Meanwhile, the Cuyahoga Valley Park Federation, representing more than 80 concerned organizations, continues to be a liaison between citizens and the National Park Service. One of its prime concerns is to make sure that the surrounding area responds to development pressures in an orderly and constructive manner.

The Federation provides guides and speakers so that more people may know and enjoy the values of our valley.

Thanks to the continuing participation of many people, the dream is coming true:

The Cuyahoga valley is being preserved for the benefit and enjoyment of all.



THE CUYAHOGA VALLEY PARK FEDERATION

Sheridan S. Steele, Director
1600 Mill St., Peninsula Ohio 44264
Phones: Peninsula (toll free from Akron) 657-2767
Cleveland 467-6171

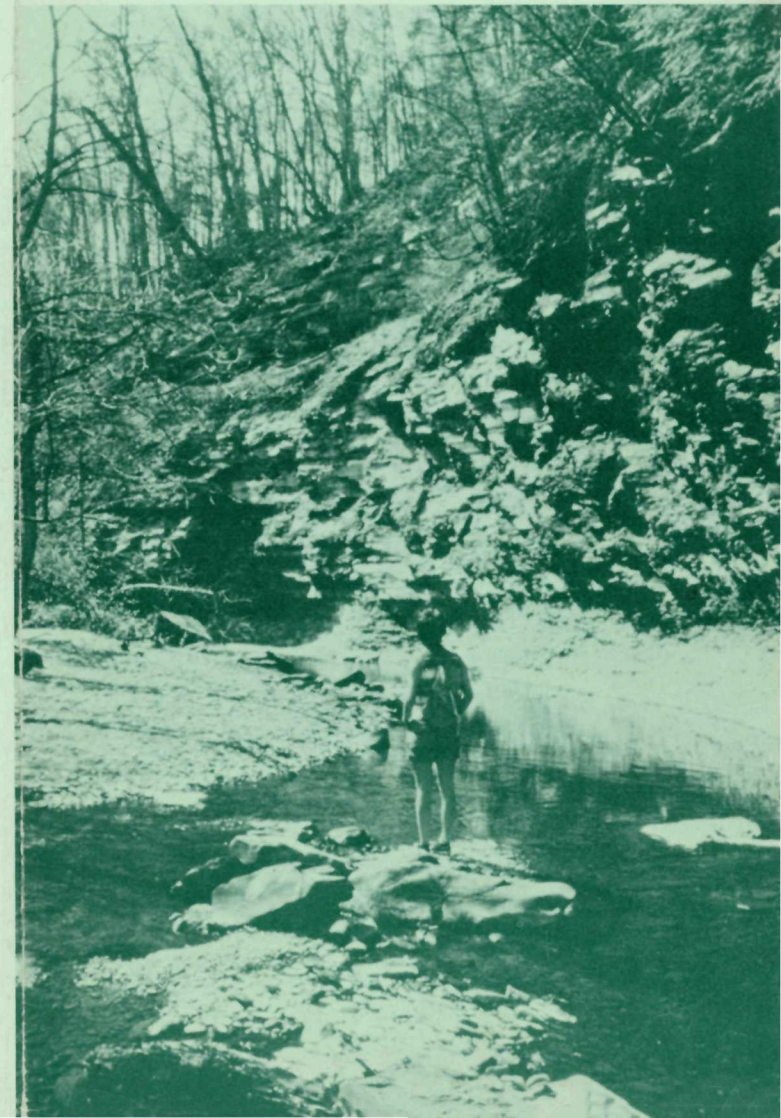
Affiliated Member Organizations:

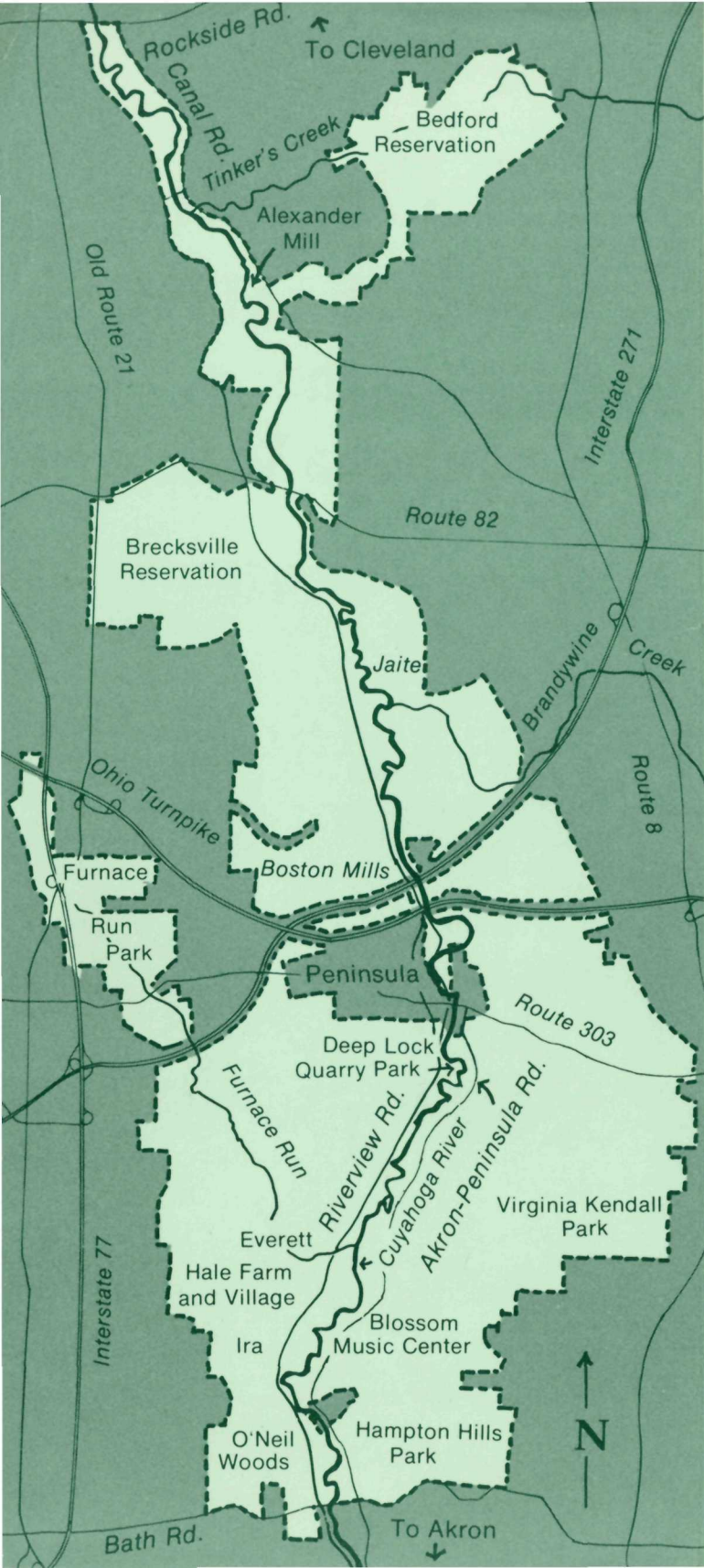
- | | |
|--|---|
| Akron Garden Club | League of Women Voters of Hudson |
| Akron Metropolitan Park District | League of Women Voters of Stow |
| Akron Y.M.C.A. | Leagues of Women Voters of Summit County |
| American Association of Retired Persons, Berea Area Chapter # 1348 | Medina County Park District |
| American Institute of Architects, Cleveland Chapter | Medina County Park District Association |
| Burroughs Nature Club | Musical Arts Association |
| Citizens for Land & Water Use | New Clevelanders Club |
| Cleveland Audubon Society | Northeast Ohio Group, Sierra Club |
| Cleveland Beautiful Committee | Northeastern Ohio Camera Club Council, Inc. |
| Cleveland Engineering Society | Ohio Conservation Foundation |
| Cleveland Metroparks System | Ohio Department of Natural Resources |
| Cleveland Museum of Natural History | Ohio Landscapers Association |
| Committee on Electric Power Transmission & the Environment | Ohio State Association of the National Campers & Hikers Association |
| Concordia Lutheran Church | Old Trail School |
| Cuyahoga Valley Association | Optimist Club of Fairlawn, Ohio |
| Emerald Necklace Garden Club | Phillis Wheatley Association |
| Experience with Nature, Cleveland Heights High School | Portage Trail Group of Sierra Club |
| Fairlawn Junior Women's Club | Revere Student Council |
| Fork and Hoe Garden Club | Rockside P.T.A. |
| Funchasers, National Campers and Hikers Association | Sharon Township Heritage Society |
| Great Trail Council, Boy Scouts of America | Siberian Husky Club of Greater Cleveland |
| Greater Cleveland Council, Boy Scouts of America | Social Action Committee, Brecksville United Church of Christ |
| Hale Farm and Western Reserve Village | Social Concerns Committee of West Shore Unitarian Church |
| Hudson Garden Club | South Ridge Civic Association |
| Institute for Environmental Education | Stow Garden Club |
| Iradale Garden Club | Summit-Portage County Comprehensive Health Planning Agency |
| Junior League of Akron, Inc. | Summit Soil & Water Conservation District |
| Junior League of Cleveland, Inc. | The Cleveland Hiking Club, Inc. |
| Keel-Haulers Canoe Club, Inc. | The Garden Center of Greater Cleveland |
| Kent Environmental Council | The Holden Arboretum |
| Kiwanis Club of North Royalton, Inc. | The Park Conservation Committee of Greater Cleveland |
| Kiwanis 24th Division | Tri-County Police, Inc. |
| Lake County Metropolitan Park District | University Heights Women's Club |
| Lake Erie Council of American Youth Hostels | Valley Garden Club |
| Lake Erie Girl Scout Council | Wadsworth Garden Club |
| Lake Erie Watershed Conservation Foundation | West Shore Unitarian Junior Church |
| Lake Shore Women's Club | Western Reserve Canal and Transportation Society |
| Lakewood Campers Club | Western Reserve Girl Scout Council |
| League of Women Voters of Akron | Women's Advisory Council of the Western Reserve Historical Society |
| Leagues of Women Voters of Cuyahoga County | Youth Enrichment Service, Inc. |
| Leagues of Women Voters of Geauga County | |

The local office of
The National Park Service
is located at

501 W. Streetsboro rd. (Rt. 303)
P. O. address: Box 158, Peninsula, Oh 44264
William C. Birdsell, superintendent

A Dream Comes True in the Cuyahoga Valley





Prehistoric peoples had villages here. The Indians, criss-crossing by canoe and on foot, called it "sacred ground." Jonathan Hale, in 1810, wrote back to Connecticut: "The land I live on is as good as any man can wish for."

Landscape architects retained in 1925 by the newly-formed Akron Metropolitan Park District praised "the great and impressive beauty" of the Cuyahoga valley, adding: "To save that scenery for all time for the benefit and enjoyment of the people . . . would be an accomplishment justifying unusual effort and worthy of great praise."

Cleveland and Akron Metropolitan Park Districts have created seven fine parks in and near the valley. Boy and Girl Scouts have established camps. Hale's farm, with its Western Reserve village, has become a living museum. Blossom Music Center is a renowned cultural attraction. Two privately-owned ski centers and a golf course are open to the public. Pleasant homes, old and new, are scattered through the countryside.

But, in the early 1970's, much of the 20-mile strip along the winding Cuyahoga River between Cleveland and Akron was a prime target for residential and commercial development. To save the wooded hillsides and lush green meadows as an oasis of green, thousands of concerned citizens and scores of organizations urged Congress to make it a national park.



Their plea was heeded. On Dec. 27, 1974, President Ford signed a bill adopted unanimously by House and Senate calling for establishment of the Cuyahoga Valley National Recreation Area "for the purpose of preserving and protecting for public use and enjoyment the historic, scenic, natural and recreational values . . . and of providing for the maintenance of needed recreational open space necessary to the urban environment."



The National Park Service moved swiftly to set up a local office, to draft plans for park management and to start acquiring land. Citizens were urged to make suggestions; hundreds participated in three series of public meetings. The result: A 120-page plan that emphasizes "the need to protect landscapes that refresh the spirit" and which calls for preservation of natural and historic sites.