

Snowmobile Regulations

National Park Service
U.S. Department of the Interior

Denali National Park and Preserve, Alaska



Welcome to Denali. The purpose of this bulletin is to provide safety and regulation information for snowmobile use in Denali National Park and Preserve.

NPS PHOTO

Federal regulations prohibit the use of snowmobiles at all times within the boundaries of the former Mount McKinley National Park. (Maps and GPS waypoints are provided on the reverse side.) When the Superintendent announces that part or all of the remaining areas of the park and preserve have an adequate snowcover, then snowmobiles are permitted for traditional activities or for travel to and from villages and homesites.

Adequate Snow Cover

Adequate snow cover is necessary to prevent damage to vegetation and soils. Factors include snow depth, snow structure and characteristics of vegetation in the area.

It is the rider's responsibility to avoid areas where damage to vegetation or soils could occur. Call the park or visit its website for current closures and snow cover determinations.

Regulations

Federal regulations require that snowmobile users do not:

- Intentionally disturb or frighten wildlife.
- Operate a snowmobile that makes excessive noise.
- Operate a snowmobile without a headlamp and red tail lamp from one-half hour after sunset until one-half hour before sunrise or when persons and vehicles are not clearly visible for 500 feet.
- Operate in excess of 45 miles per hour, or engage in racing.

Additionally:

- Riders must report to park rangers, by the quickest means possible, accidents resulting in property damage, injury or death of a person.
- State statutes require snowmobiles to be registered and numbered.
- Operators must be at least 16 years of age unless supervised by a responsible person 21 years of age or older. The supervising rider must keep the other rider in sight and may not supervise more than one person.

Safety Concerns

Weather in the Alaska Range can change quickly and become severe with high winds and temperature fluctuations.

- Always carry survival gear in the backcountry and inform others of your plans. Travel in groups.
- Avalanche hazards are elevated by wind crusts or ice layers in the snow pack. Avoid steep slopes, narrow valleys, and ravines.

- Carry and know how to use avalanche rescue equipment, such as a shovel, probe, and a personal avalanche transceiver.
- Waterways can be very dangerous for travel. Extreme caution is advised.

GPS Waypoints

Numbered sites correspond to WGS84 latitude and longitude coordinates.

Boundary Points

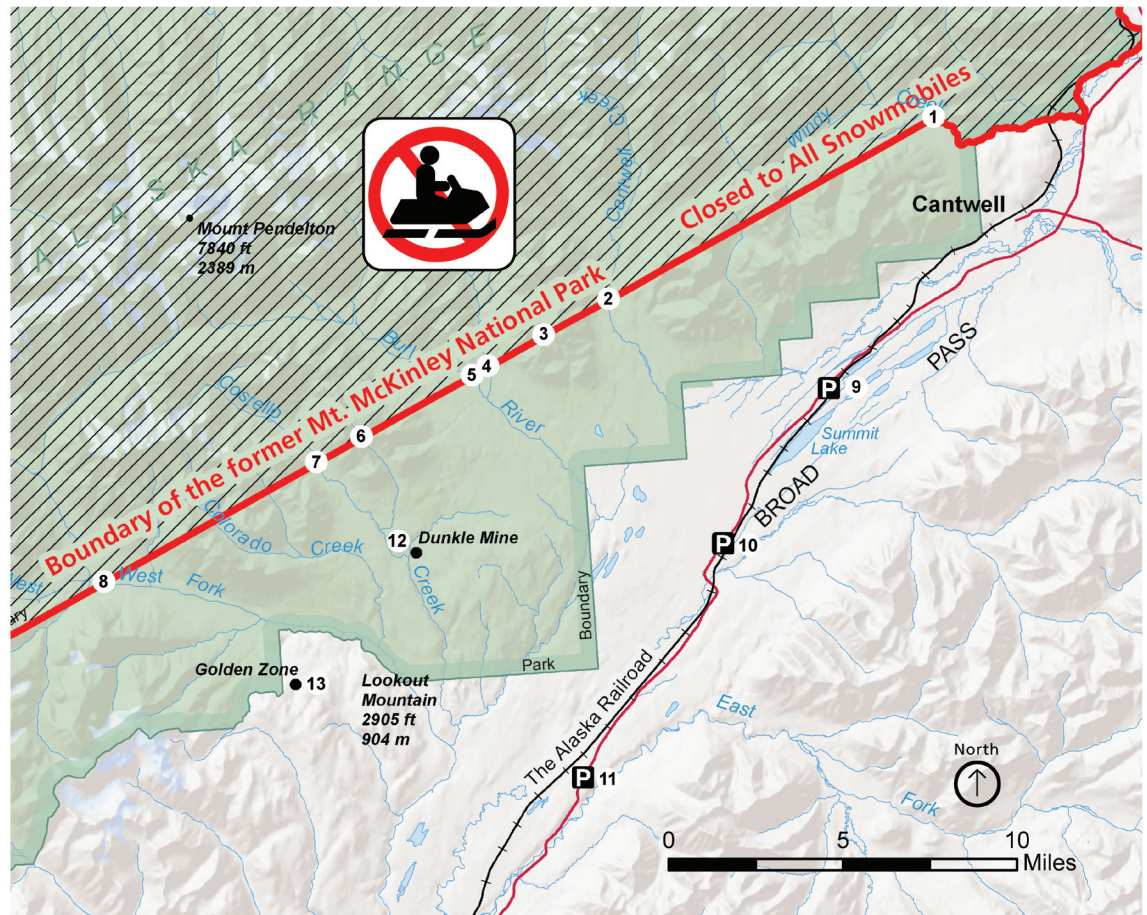
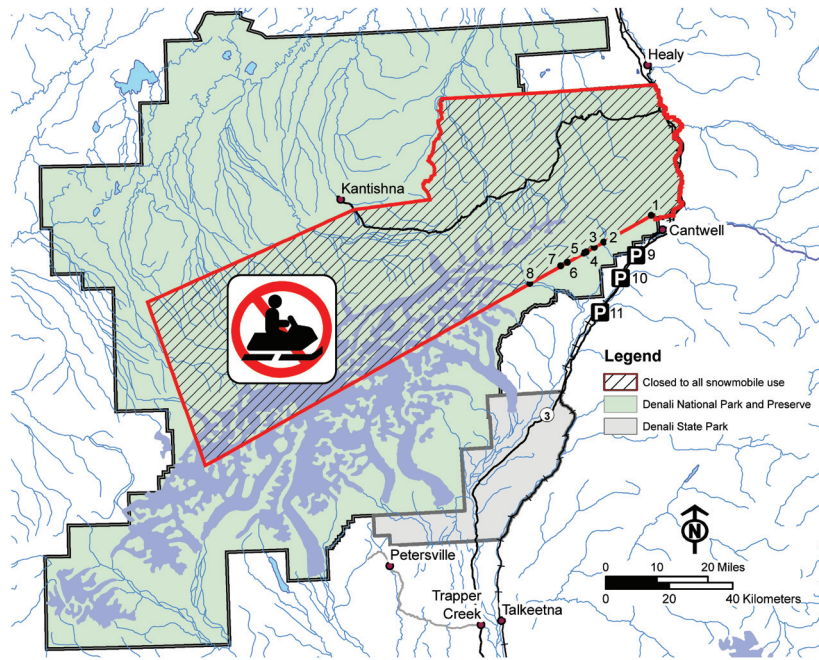
- 1 N 63° 26.0570'
W 149° 0.9762'
- 2 N 63° 22.1488'
W 149° 19.7157'
- 3 N 63° 21.3674'
W 149° 23.4535'
- 4 N 63° 20.6973'
W 149° 26.6411'
- 5 N 63° 20.5003'
W 149° 27.5625'
- 6 N 63° 19.1628'
W 149° 33.9056'
- 7 N 63° 18.6100'
W 149° 36.4896'
- 8 N 63° 15.9970'
W 149° 48.6341'

Parking Areas

- 9 Milepost 201
(Summit)
N 63° 19.377'
W 149° 8.433'
- 10 Milepost 196
N 63° 15.959'
W 149° 14.285'
- 11 Milepost 188
(Colorado)
N 63° 10.407'
W 149° 23.007'

Other References

- 12 Dunkle Mine
N 63° 16.2429'
W 149° 31.3200'
- 13 Golden Zone
N 63° 13.1920'
W 149° 38.4416'



Emergency

Cell Phone **911**
Satellite Phone **907 474-7721**

Denali National Park and Preserve
PO Box 9
Denali Park, Alaska 99755
907 683-2294
www.nps.gov/dena