

Corkscrew Peak

Death Valley National Park
California / Nevada



This hike has no designated trail and is in wilderness. Expect some rock scrambling and route finding. Visitors should be proficient in cross country navigation.

Length: 7.3 miles (11.7 km) out and back round trip.

Difficulty: Difficult. 3,080 feet (939 m) elevation gain. This is a steep ascent, climbing at 1,000 ft/mi (190 m/km). There are also small sections of rock scrambling. There is no formal trail.

Location: Along Daylight Pass Road at 36.73458, -116.97209. There is a small parking area along the north side of the road. You can also access the hike from the Corkscrew Peak sign, although the previous trailhead makes route finding easier.

Before You Go: Check the weather prior to your trip. Carry water at all times. There is no cellular coverage in the area. Bring a map, compass, and GPS device to assist with navigation. There is no trail.

Get free GPS files for your smartphone, tablet, or GPS device:

nps.gov/deva/planyourvisit/hiking.htm

Route Description: The trail starts at an unmarked parking area. Begin by climbing the small hill immediately next to the parking area and road.

Travel north toward Corkscrew Peak in a hilly wash area. Aim just to the right of the peak as you follow this large wash. Eventually it will fork, and to the left the wash constricts. There is a large boulder standing before this narrow gully about 1.6 miles (2.5 km) from the starting point.

The gully can almost be described as a small canyon, with worn rocks bordering the sides. This continues for nearly 1/3 of a mile (.5 km) before veering left. Look for indications of use, such as footprints, stacked rocks, or a path that may help you navigate. The gully narrows further here, and forces you to scramble over a 5 foot (1.5 m) dry waterfall.

Above the dry waterfall, the route leads you out of the wash, as a faint path appears and comes into the foothills of the Grapevine Mountains. This affords you a beautiful view of Corkscrew Peak, which looms ahead.

The path continues to roll through these hills, steadily wrapping around the side of the peak. Bighorn Sheep are sometimes spotted in the area, passing through to nearby hidden springs.

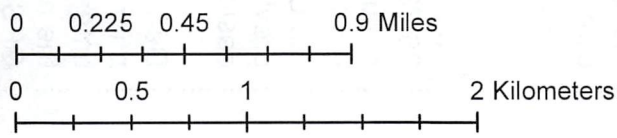
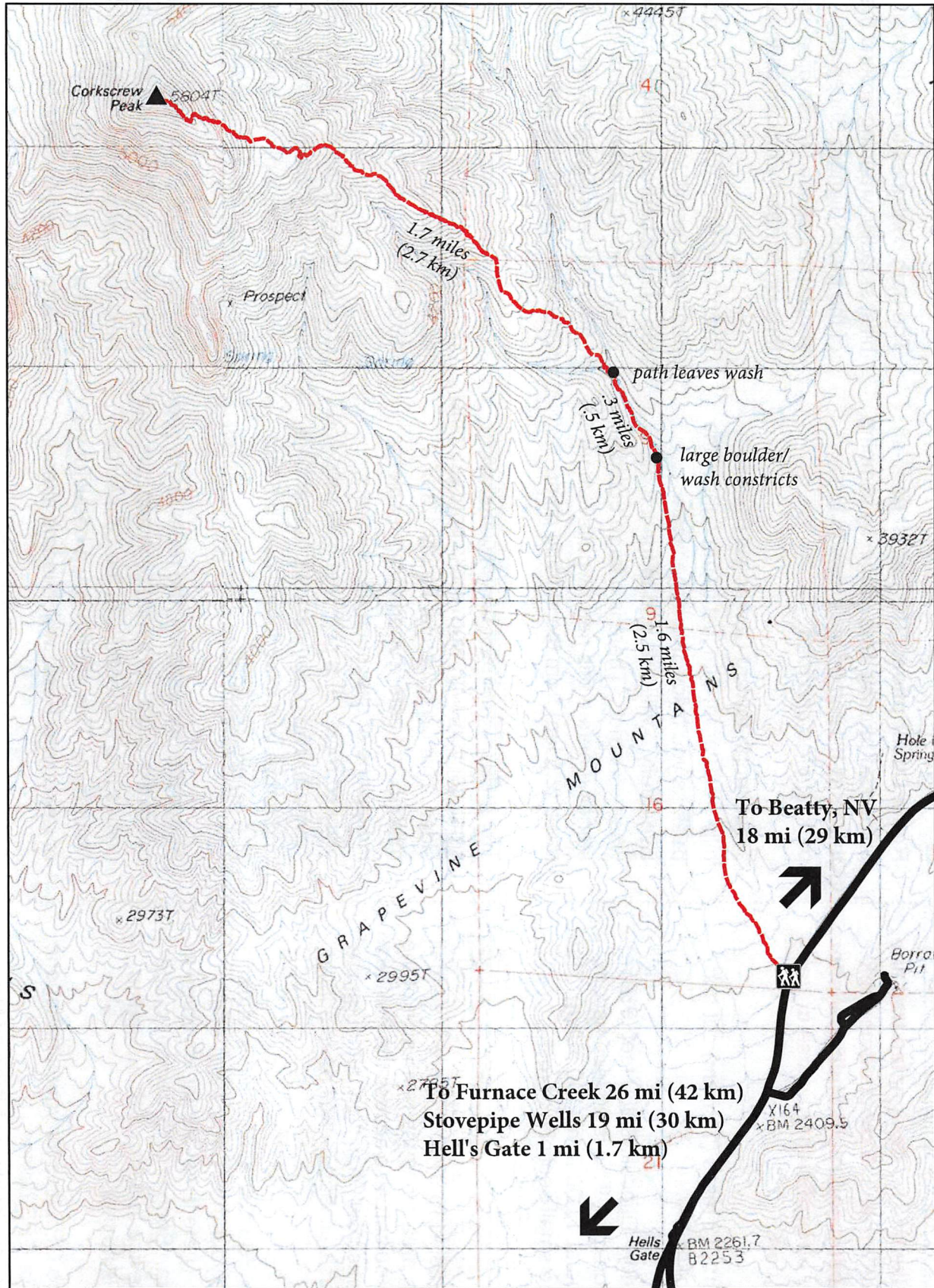
Eventually the path climbs more steeply near the summit. With small rocks on top of hard bedrock, footing can be tricky. This strenuous part of the hike affords increasingly great views of the Grapevine Mountains and Death Valley as you reward.

Once on the top of the ridgeline there is an impressive rock arch structure about 10 feet tall.

Continue along the rocky ridgeline to the highest point at the peak. Be sure to mark your accomplishment in the trail register, secured in a metal box.

As you descend, you may find using hiking poles on the steep surface will help you navigate the rugged terrain. Retrace your steps along your route and back towards your vehicle.

Corkscrew Peak



1 inch = 0.51 miles

Mileages shown are approximate for reference