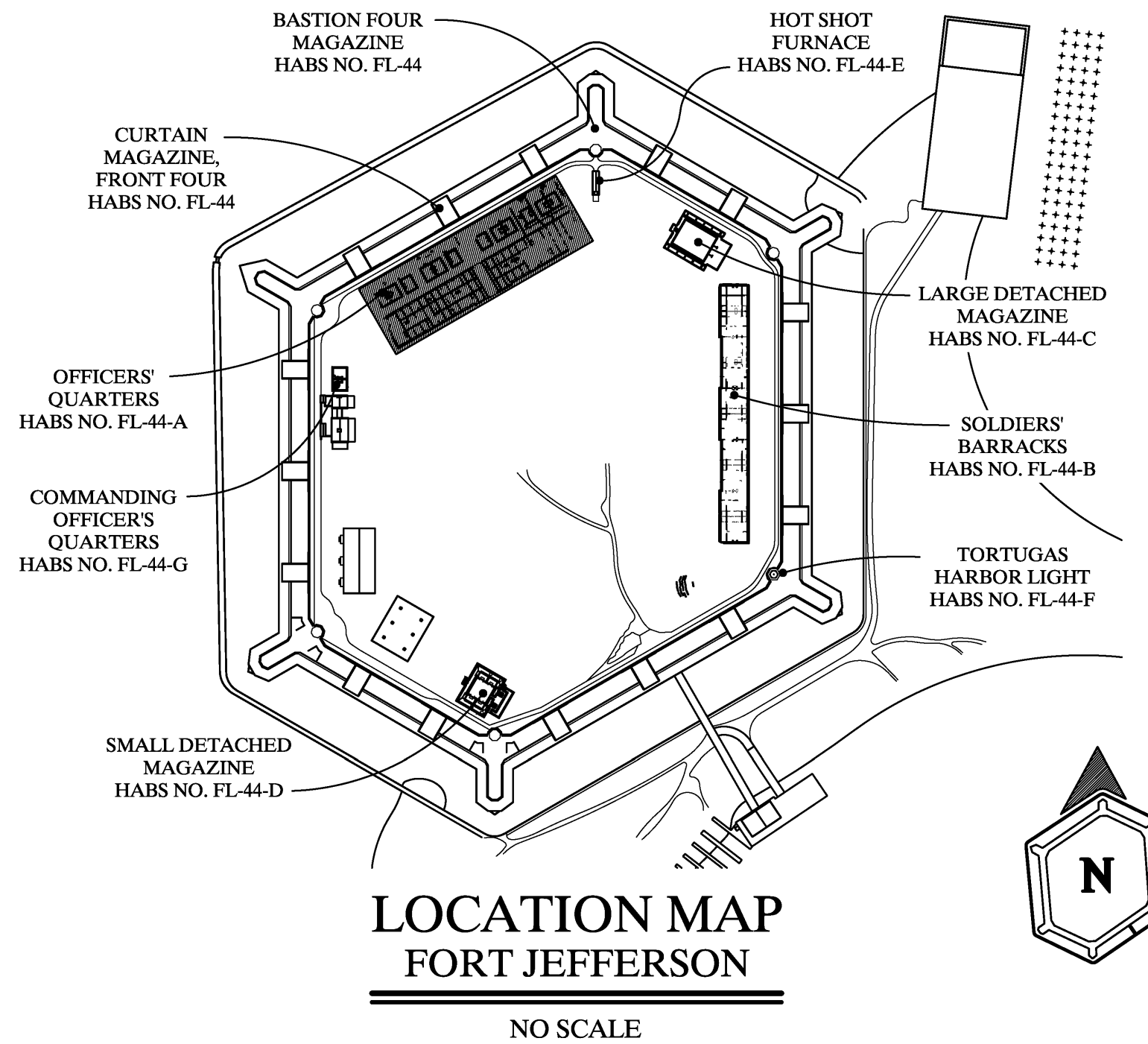


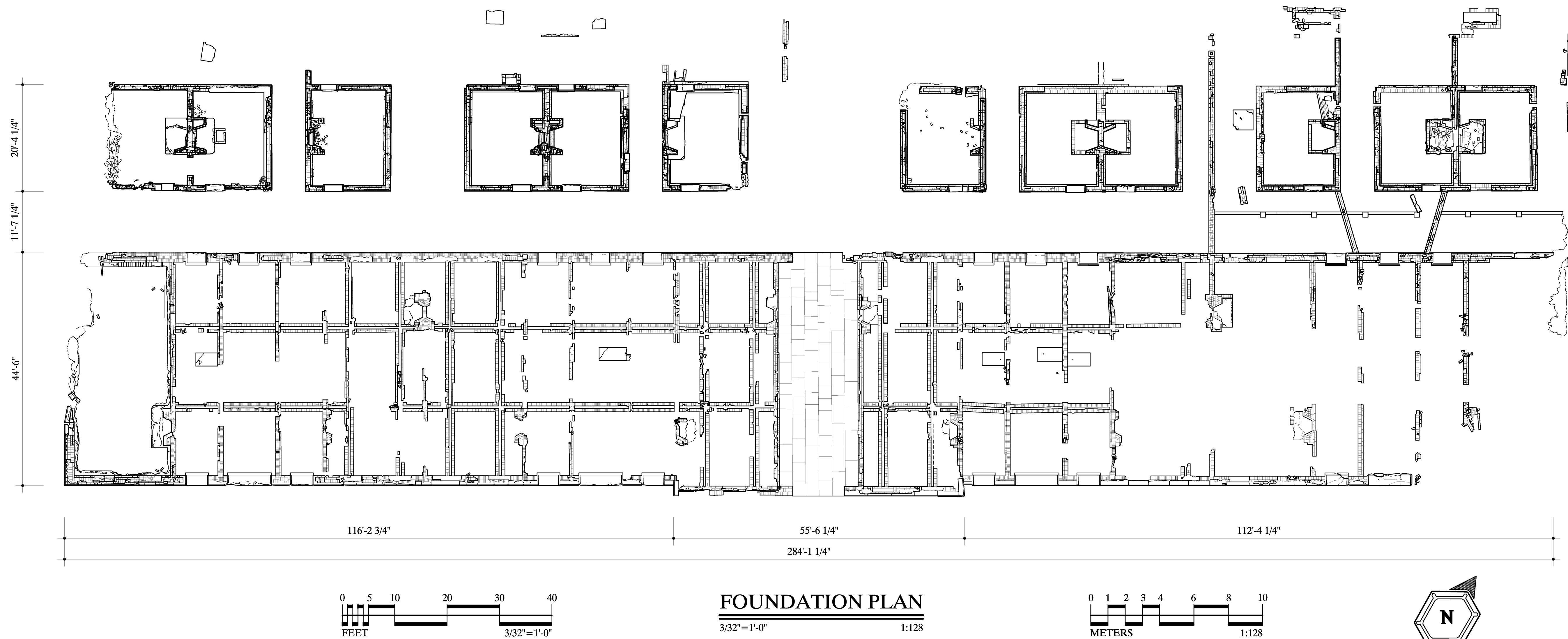
OFFICERS' QUARTERS

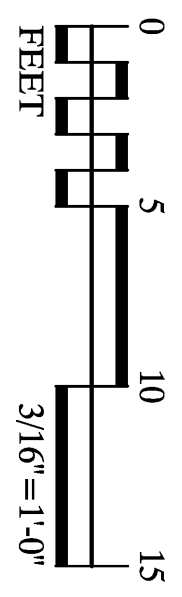
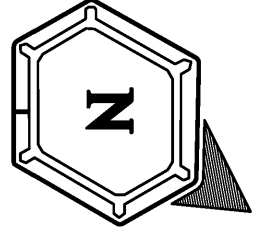
When Fort Jefferson was established in 1846, priority was given to the construction of permanent officers' quarters, enlisted men's (soldiers) barracks, and associated kitchens. While the Officers' Quarters was to measure 286' x 44' a smaller section was built first. According to the specifications, there was to be erected a "length of about 68 feet, which being the full allowance of quarters for two companies, will afford ample accommodation for all the persons engaged in supervising and overseeing." The design was undertaken by Chief Engineer of the U.S. Army General Totten and drawings prepared by Lieutenant Montgomery C. Meigs. The Quarters were built of brick with concrete foundations, three stories in height. They included refinements such as a full-height piazza to the rear, front entries with half-round lights, cut stone water tables, sills and lintels, and venetian blinds. Construction began in October 1847 and was undertaken by contractors, who were also responsible for supplying all the necessary building materials and component parts. Work was supplemented over the years by slave and prison labor. The first section was completed in 1850 for use by the engineer or officer in charge, his assistant, clerk, physician, and an overseer.



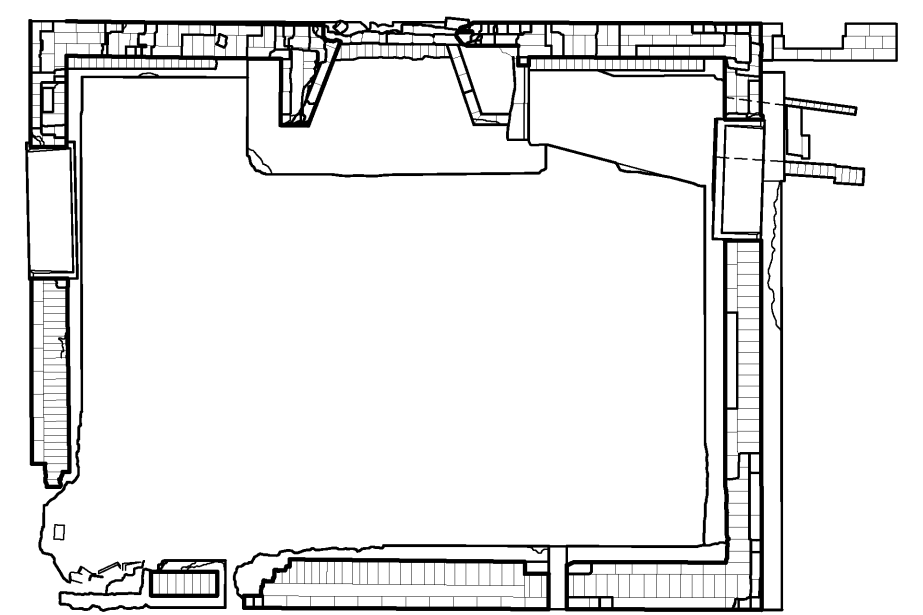
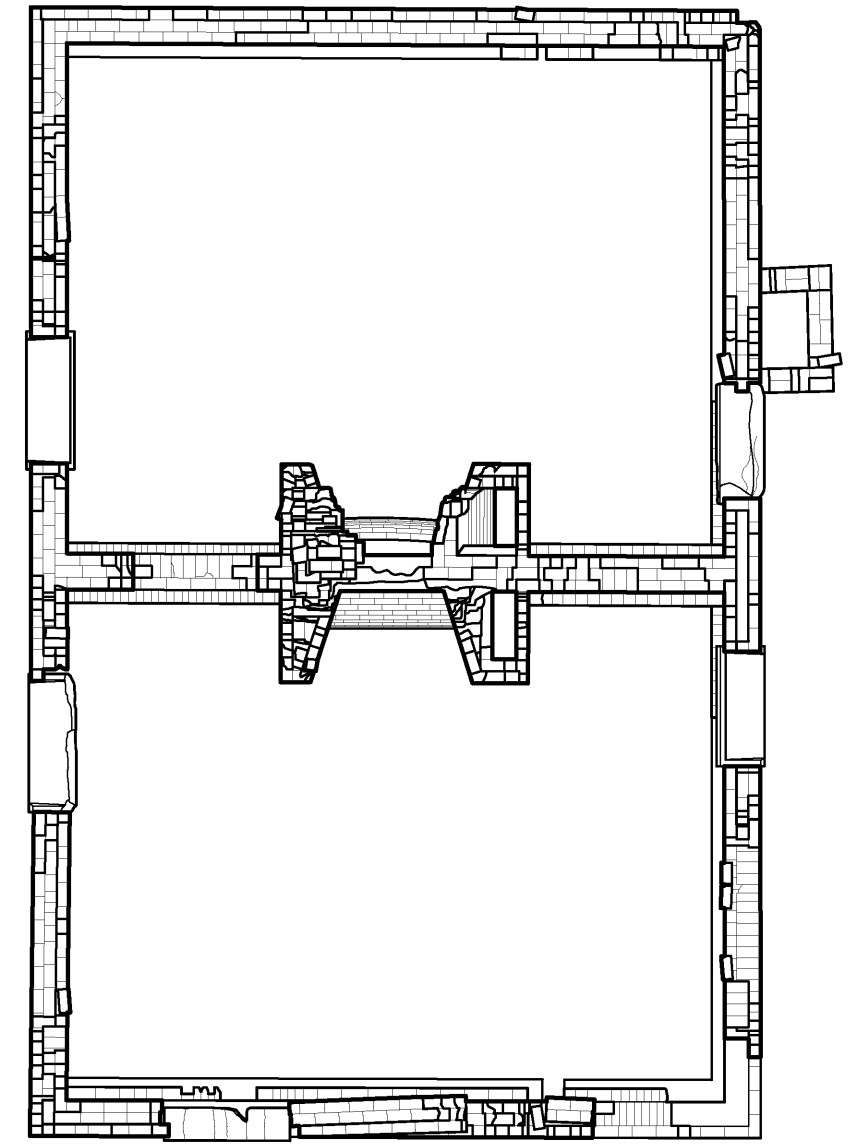
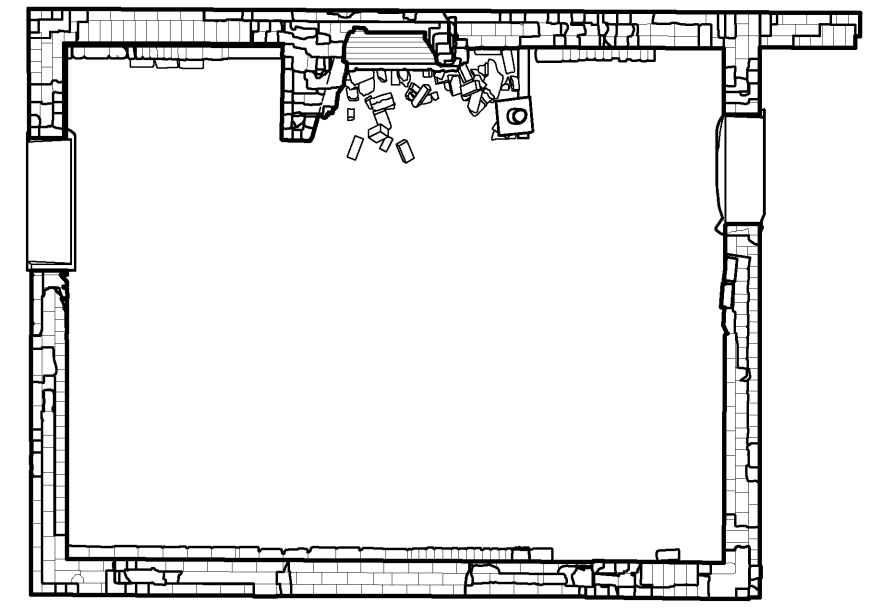
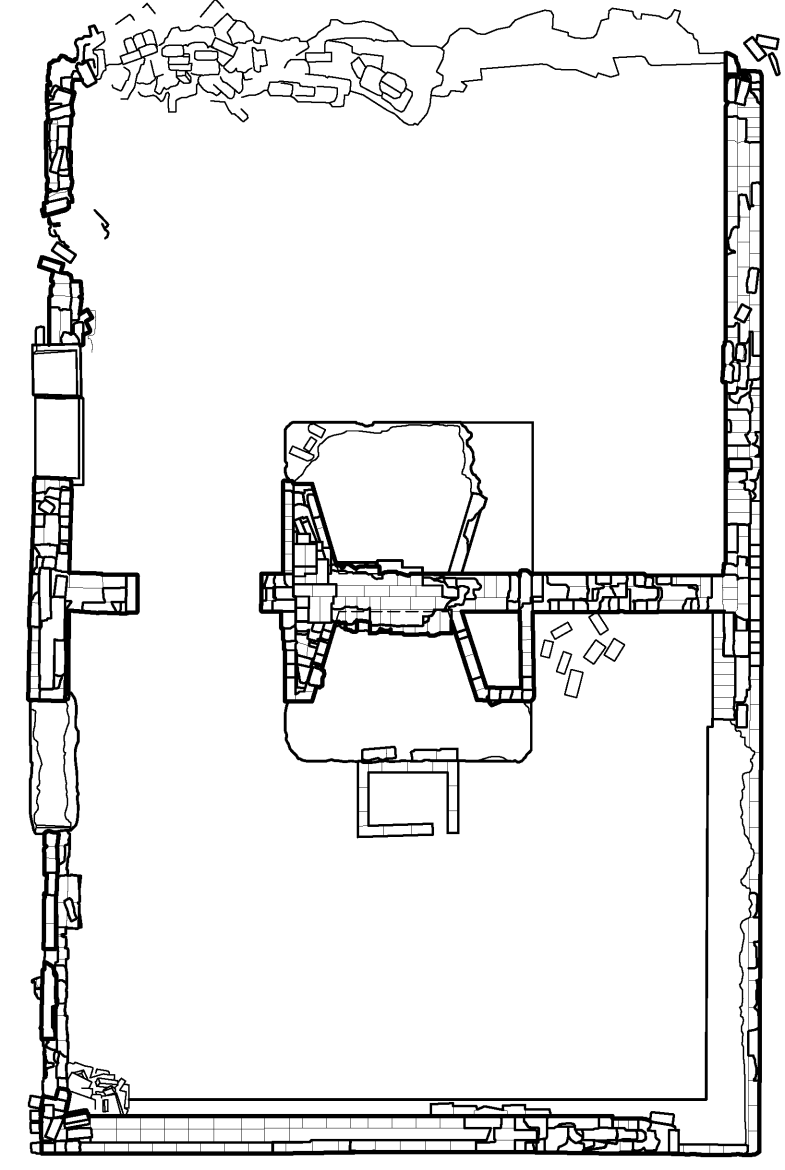
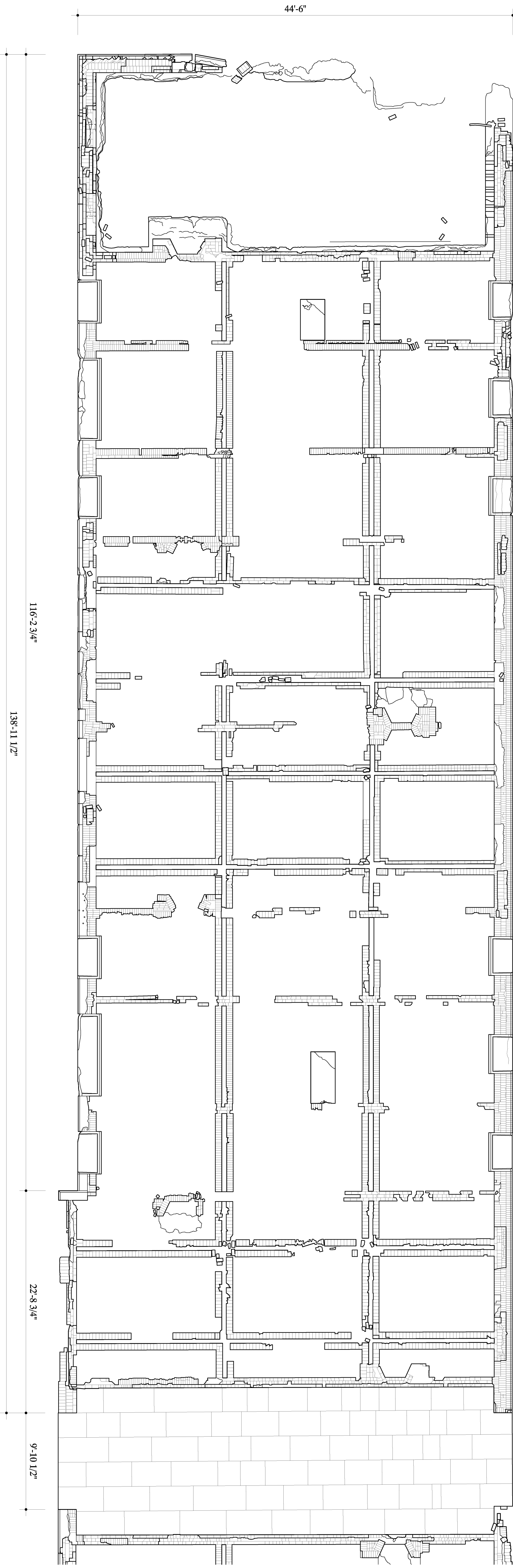
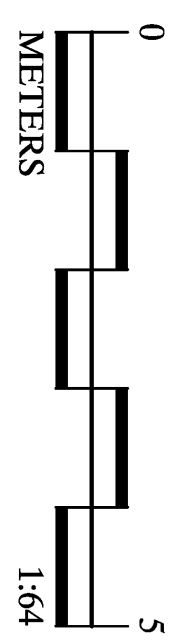
Due to delays caused by the fort's isolated location, extreme weather conditions, epidemics, lack of funding and an able workforce, it was 1874 before the structure was considered finished; even then only thirty-six of the planned sixty-eight rooms were usable. The Officers' Quarters burned in 1927 and the above grade remains demolished in 1962.

Documentation of the Officers' Quarters was undertaken by the Historic American Buildings Survey (HABS), Heritage Documentation Programs (HDP) of the National Park Service (Catherine C. Lavoie, Chief, HABS; Richard O'Connor, Chief, HDP) in Winter 2016. The project was undertaken by HABS in cooperation with Dry Tortugas National Park (Glenn Simpson, Park Manager; Kelly Clark, Cultural Resources Specialist) and Lord Aeck Sargent (Rob Yallop, Senior Associate; Kelly Gawinek, Project Architect). The HABS documentation of the Fort Jefferson Parade Ground Structures was funded with a grant from the HTR Foundation. Field recording and measured drawings were completed by Paul Davidson and Daniel De Sousa, HABS Architects. The large-format photography was undertaken by Todd Croteau, HAER Architect.





FOUNDATION PLAN
3/16"=1'-0"
1:64



MATCH LINE
SHEET 3

MATCH LINE
SHEET 3

DRAWN BY: DANIEL DE SOUSA

FORT JEFFERSON DOCUMENTATION PROJECT, 2015
NATIONAL PARK SERVICE
UNITED STATES DEPARTMENT OF THE INTERIOR

FORT JEFFERSON, OFFICERS' QUARTERS
DRY TORTUGAS NATIONAL PARK KEY WEST MONROE COUNTY FLORIDA

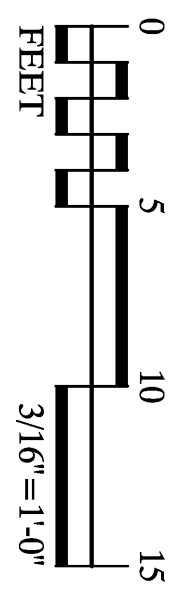
SURVEY NO.
FL-44-A

HISTORIC AMERICAN
BUILDINGS SURVEY
SHEET 2 OF 3 SHEETS

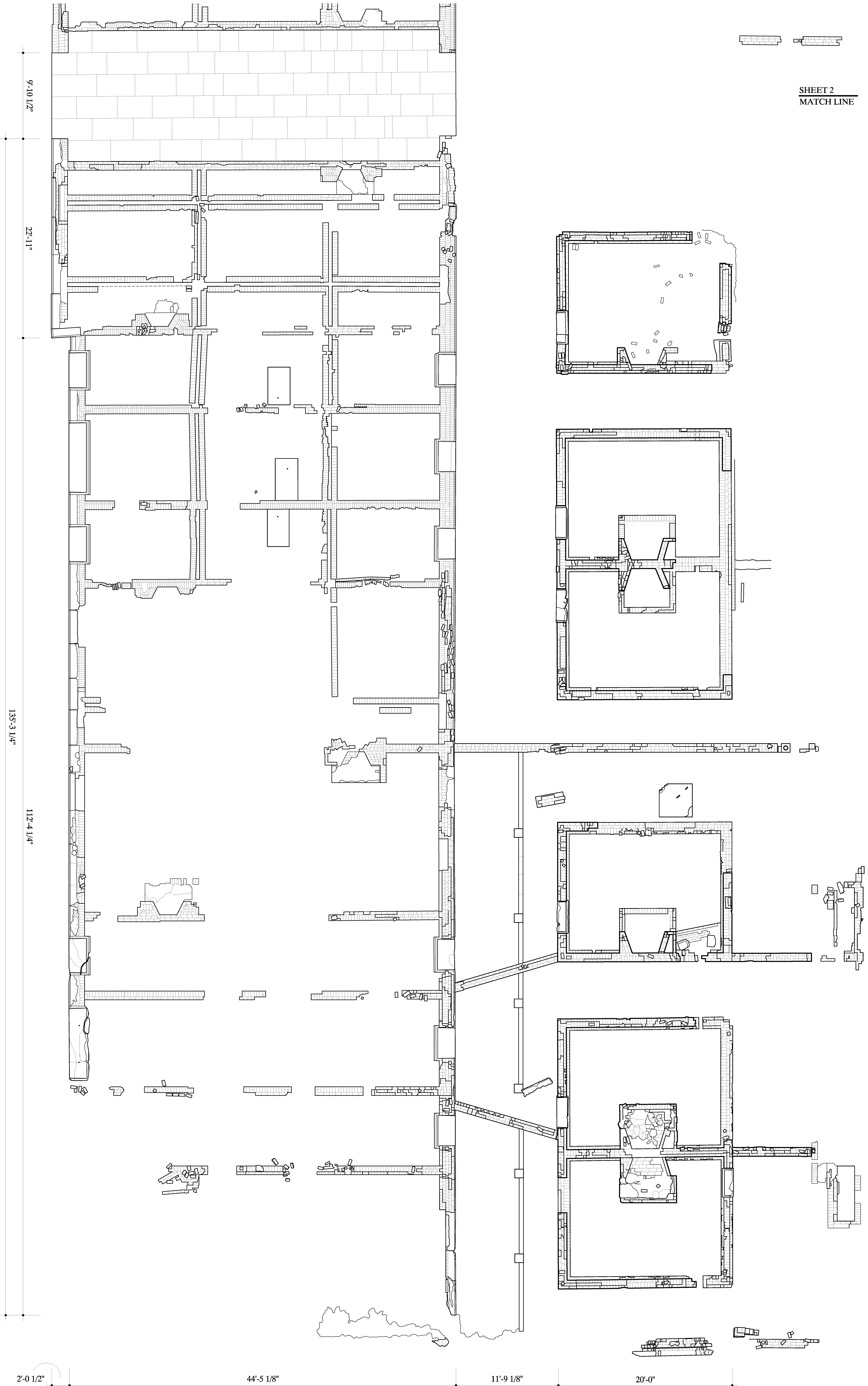
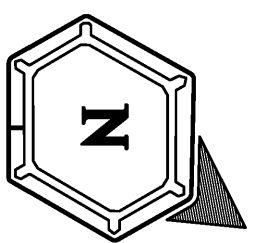
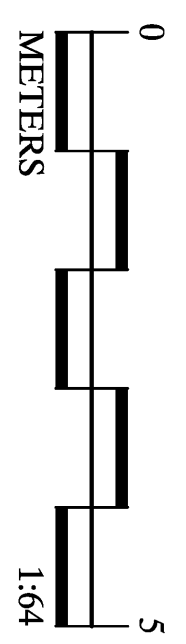
LIBRARY OF CONGRESS
INDEX NUMBER

SHEET 2
MATCH LINE

SHEET 2
MATCH LINE



FOUNDATION PLAN
3/16" = 1'-0"
1-64



DRAWN BY: DANIEL DE SOUSA

FORT JEFFERSON DOCUMENTATION PROJECT, 2015
NATIONAL PARK SERVICE
UNITED STATES DEPARTMENT OF THE INTERIOR

FORT JEFFERSON, OFFICERS' QUARTERS
DRY TORTUGAS NATIONAL PARK
KEY WEST
MONROE COUNTY
FLORIDA

SURVEY NO.
FL-44-A

HISTORIC AMERICAN
BUILDINGS SURVEY
SHEET 3 OF 3 SHEETS

LIBRARY OF CONGRESS
INDEX NUMBER



HARS No. FL-44 A-1



HABS No. FL-44 A-2