



Portrait: J. Anthony Willis
White House Historical Assoc.

... above all else, the good leader needs integrity—a deeply ingrained honor, honesty and decency.

Dwight D. Eisenhower, October 17, 1961



PHOTOS: LEFT: EISENHOWER LIBRARY; PORTRAIT: RIGHT: THOMAS STEVENS, WHITE HOUSE HISTORICAL ASSOC.

From Farm Boy to Five Star General to President

Dwight David Eisenhower was born in Texas and grew up in Kansas. Ike (a nickname from grade school) had no designs on an army career, much less the Presidency of the United States. But he wanted to go to college and discovered that free education awaited young men appointed to the U.S. Military Academy. At West Point Eisenhower pursued football, his first love, until a knee injury barred him from the gridiron for good.

When the United States entered World War I in 1917, Eisenhower hoped for duty overseas. Instead, he spent the war at Camp Colt in Gettysburg, Penn., in charge of training soldiers for the army's tank corps. Ike loved this town in the Appalachian foothills, about 50 miles south of where his ancestors had settled in the 1700s.

During the 1920s and 1930s Eisenhower held a series of staff jobs and steadily rose in rank. By the early 1940s, with another war at hand, he began to earn promotions—and stars—at record speed. In December 1943 he was named Supreme Allied Commander for "Operation Overlord," the cross-English Channel invasion. His orders were simple: "You will land in Europe and, proceeding to Germany, will destroy

Hitler and all his forces." On June 6, 1944, at Eisenhower's direction, invasion forces hit the beaches at Normandy. The heroic efforts of the Allies brought an end to Nazi Germany—and peace to Western Europe.

Eisenhower's wartime success earned him worldwide adoration. Politicians deemed the General—as he now was known—an attractive candidate. Instead, he chose the presidency of Columbia University in 1948. Anticipating retirement, Dwight and Mamie searched for rural property. In 1950 they bought a farm near Gettysburg, but their retirement was delayed for another decade. At the request of President Harry S. Truman, Eisenhower assumed command of the North Atlantic Treaty Organization forces in Europe.

In 1952 Eisenhower won election as 34th President of the United States. During his campaign he promised that, if elected, he would bring an end to the Korean Conflict, a bitter war that pitted United States and United Nations troops against North Korean and Communist Chinese forces. After his election Eisenhower visited Korea; negotiations resulted in an armistice on July 27, 1953.

The Eisenhowers planned to relax on weekends at their farm. In November 1955 their country home became a temporary White House while Eisenhower recuperated from a heart attack. Back in Washington, D.C., the President received a steady stream of dignitaries. He invited visitors to Camp David, Md., for conferences, then for a tour of his farm. Leaving Washington in 1961 meant retirement at last. Mamie had once said, "How nice it will be to be free, to rest and to do as we like." Instead, for the next eight years Eisenhower worked at his Gettysburg College office, met with political and business associates, and wrote his memoirs.

The Eisenhowers made a gift of their farm to the Federal Government in 1967 (with the agreement that Dwight and Mamie would live there for life), and Congress designated the property as Eisenhower National Historic Site. In 1978 Mamie explained why their Gettysburg property was so important to the couple who had once changed habitats about once a year, "We had only one home—our farm."

David and Ida Eisenhower pose with their six sons in 1902. Dwight is at far left (above far left).

Eisenhower poses before a tank at Camp Meade, Md., 1919 (above middle).

Eisenhower talks with men of Company E, 502d Parachute Infantry Regiment, at the 101st Airborne Division's camp, Greenham Common, England, June 5, 1944 (above left).

Mamie Eisenhower sat for this portrait in her pink silk inaugural gown embroidered with 2,000 rhinestones. Mamie regularly appeared on the Most Admired Women and Best Dressed lists. Her tightly curled bangs, styled by Elizabeth Arden, completed the "Mamie Look" (above).

Highlights of Eisenhower's Life

1890

1890 Born October 14, in Denison, Tex. to David and Ida Eisenhower, third of six sons.

1891–1909 Moves with family and grows up in Abilene, Kans.; graduates from Abilene High School.

1911 Enters U.S. Military Academy, West Point, N.Y.

1915–1916 Graduates from West Point, reports to Fort Sam Houston, Tex.; meets Denver socialite Mamie Geneva Doud in Texas; they marry in 1916.

1917 United States enters WWI; son Doud Dwight (affectionately nicknamed "Icky") born September 24.

1918 Appointed commander at Camp Colt, Army Tank Corps training center, Gettysburg, Penn.

1919–1921 Sent to Camp Meade, Md.; son Icky dies of scarlet fever January 2, 1921.

1922 Joins 20th Infantry Brigade at Camp Gaillard, Panama; receives Distinguished Service Medal for work at Camp Colt; son John Sheldon Doud born August 3.

1925 Graduates first in class from Command and General Staff School in Kansas.

1926–1927 Works on the American Battle Monuments Commission under General Pershing; is contributing writer for *American Armies and Battlefields in Europe*, a guide to U.S. involvement in WWI; enters Army War College, Fort McNair, Washington, D.C.

1928 Travels to Paris, France, as member of Battle Monuments Commission; gains greater familiarity with WWI battlefields.

1929 Assigned to Office of Assistant Secretary of War; prepares plans for mobilization of American industry and military, in case of war.

1933–1939 Becomes General MacArthur's personal assistant; travels to Philippines with MacArthur.

1939–1940 Germany invades Poland; World War II (WWII) begins in Europe; Eisenhower becomes Chief of Staff, Third Army.

1941 Japanese attack Pearl Harbor; U.S. enters WWII; Eisenhower called to Wash. D.C., works in War Dept.

1942 Named Asst. Chief of Staff in charge of War Plans; is named Asst. Chief of Staff of new Operations Division; is appointed Commander of European Theatre of Opera-



Dwight and Mamie married on July 1, 1916, in a simple ceremony at the Doud home in Denver.

tions; African American John Mooney joins Eisenhower's personal staff (beginning a friendship that lasts for 27 years of service); Eisenhower commands Allied invasion of North Africa.

1943 Commands invasion of Italy; is appointed Supreme Commander of Allied Expeditionary Forces to command invasion of Europe.

1944–1945 Directs invasion of Normandy June 6, D-day; accepts Germany's unconditional surrender; is appointed commander of the U.S. Occupation Zone in Germany; is appointed Army Chief of Staff.

1948 Retires from active military service; writes *Cru-*

sade in Europe; is president of Columbia University.

1949–1951 Informally chairs the Joint Chiefs of Staff under the newly created defense department; Korean War begins (1950); is appointed Supreme Commander of North Atlantic Treaty Organization (NATO); Dwight and Mamie buy the Gettysburg farm.

1952 Resigns as NATO's Supreme Commander; U.S. tests hydrogen bomb in South Pacific; Eisenhower is elected the first Republican President in 20 years.

1953 Establishes Dept. of Health, Education, and Welfare; ends Korean War; Soviet Union (U.S.S.R.) begins

testing hydrogen bomb; Eisenhower delivers Atoms for Peace speech, proposing worldwide development of atomic energy.

1954–1955 Approves development of spy satellites and the U-2, a high-altitude aerial reconnaissance aircraft; Supreme Court rules that segregated schools are illegal (*Brown v. Board of Education*); Eisenhower proposes Open Skies, a policy allowing mutual overflights of U.S. and U.S.S.R. (Khrushchev rejects); signs bill raising minimum hourly wage to \$1.00; suffers heart attack and sets up temporary White House at the farm in Gettysburg.

1956 Signs federal highway bill authorizing construction of interstate highways; elected President for second term.

1957–1958 Promises aid for Middle Eastern nations to fight Communist aggression (Eisenhower Doctrine); signs Civil Rights Act (first civil rights legislation in 82 years); sends troops to Little Rock, Ark., to enforce desegregation of Central High School; U.S.S.R. launches *Sputnik*, world's first satellite; Eisenhower signs bill establishing National Aeronautics and Space Agency (NASA); U.S. tests intercontinental ballistic missiles (ICBM).

1959 Signs legislation designating Alaska and Hawaii as 49th and 50th states; meets with Soviet Premier Khrushchev at Camp David, Md.; Khrushchev visits Eisenhower farm and invites Eisenhower to visit U.S.S.R.

1960–1961 U-2 spy plane crisis erupts; U.S. and U.S.S.R. relations deteriorate (Eisenhower's trip to U.S.S.R. is cancelled); CIA's covert Corona program launches its first successful photoreconnaissance satellite; Eisenhower retires to Gettysburg farm.

1969 Dies March 28, age 78; is buried with full military honors in Abilene, Kans.

1979 Mamie Eisenhower dies November 1, age 82; is buried beside her husband at the Eisenhower Presidential Library in Abilene.

The family at the White House, Easter Sunday, 1956. (Seated left to right): Grandchildren Anne, David, Susan, and baby Mary, Mamie Eisenhower, and daughter-in-law Barbara. (Standing): President Eisenhower and son John.



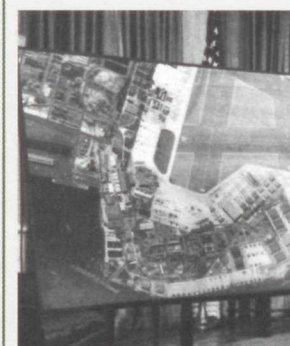
The Cold War U-2 Crisis 1960

CIA pilot Francis Gary Powers was flying a Lockheed U-2 reconnaissance airplane 70,000 feet over Soviet airspace when he was shot down on May 1, 1960. The Soviets tracking Powers launched a surface-to-air missile, damaging the U-2's wings. Powers ejected from the tumbling plane at 40,000 feet and opened his parachute at 15,000 feet. When he

landed the Soviets were waiting. The U.S.S.R. had captured a Cold War prize—proof that the U.S. was secretly photographing Soviet military sites.

The White House knew a plane was missing but, at first, did not know that the pilot had been captured. NASA issued a statement on May 3 that a "U-2 weather research plane" may have "accidentally violated Soviet airspace." On May 7 Eisenhower received word at his Gettysburg farm that Khrushchev had smugly told the world that the Soviets had Powers (alive), his damaged plane, and its spy cameras. The U.S. finally admitted "... such a flight

Khrushchev examines the captured U-2 wreckage on May 11, 1960. The plane is still on display today in a Moscow museum (left).



Eisenhower defends his U-2 policy on national television on May 25, 1960, explaining that aerial surveillance can help assure all humanity "... that they are safe from any surprise attack ..."

This photo of the San Diego North Island Naval Station (taken at an altitude 70,000 feet) shows aircraft and details as small as six-inch-wide parking lines (left).



Life on the General's Farm

Home—At Last As John F. Kennedy's inauguration drew to a close on January 20, 1961, the departing President and First Lady quietly left Capitol Hill. After a farewell luncheon they headed north from Washington on snow covered roads. "And so we came to Gettysburg," wrote General Eisenhower in the mid-1960s, "and to the farm we had bought eleven years earlier, where we expected to spend the remainder of our lives."

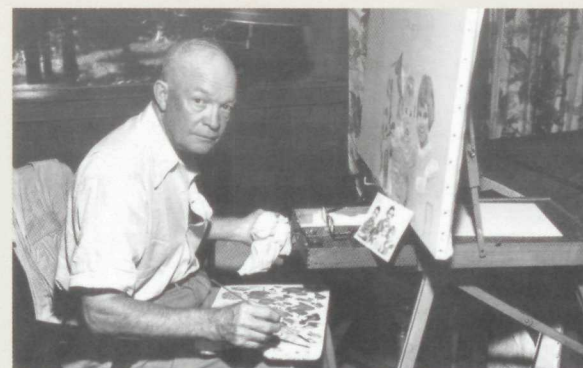
To Dwight and Mamie Eisenhower the red brick farmhouse that they purchased in 1950 from Allen Redding seemed custom-made for retirement. Although the house was in disrepair, its

"big homey kitchen" appealed to Mamie, who explained that Ike loved to cook in his spare time, and they "could never think of buying a home that didn't have a kitchen big enough for him to use with comfort." When the remodeling began, the architects were surprised to find a decaying 200-year-old log cabin beneath the brick veneer. The house could not be saved.

Disappointed, but determined to preserve a small piece of history, Mamie told construction workers to salvage what materials they could while dismantling the original structure. Builders retained part of the brickwork and the summer kitchen fireplace with a bake oven and built a

new house around these features. By March 1955 the house was finished, and Dwight and Mamie were owners of what architect Milton Osborne termed a "modified Georgian farmhouse," complete with eight bedrooms, nine bathrooms, a stately living room, formal dining room, kitchen and butler's pantry, and glassed-in porch.

The porch was Dwight and Mamie's favorite room. Here they enjoyed the morning sun over breakfast and spent hours visiting with family and friends, reading, playing cards, watching television, and just relaxing while looking out over Pennsylvania's rolling hills.



Eisenhower began painting in 1948. He spoke modestly of his talent, "I don't know anything about painting. . . . They are daubs, born of my love of color. . . ." Mamie was an ardent admirer and displayed his works prominently.

Eisenhower's Black Angus Enterprise

Eisenhower maintained a successful cattle enterprise, Eisenhower Farms, for 15 years. The business was composed of 189 acres of Eisenhower's land and 306 adjoining acres owned by his partners. The Eisenhower Farms show cattle rapidly gained recognition in the Angus-raising community, winning grand championships at the Pennsylvania State Farm Show and blue ribbons in major competitions across the United States.

As President, Eisenhower used the farm for personal diplomacy, inviting world leaders to visit the house and cattle barns. It was a welcome respite from formal talks at nearby Camp David.

Touring the Farm

Reception Center and Shuttle Bus Stop Begin your visit at the Reception Center. It has information, a video, restrooms, and a bookstore. Exhibits highlight Eisenhower's life, from his boyhood days in Abilene, Kans., through his military and Presidential years, to retirement at his Gettysburg farm.

Self-Guiding Tours: Eisenhower Home, Grounds, Skeet Range, and Farm 2

- The *Eisenhower Home* retains nearly all its original furnishings and offers a glimpse into the life and times of Dwight and Mamie Eisenhower.
- The *grounds* tour includes gardens, greenhouses, a tea house, and the brick barbecue, where Eisenhower grilled enormous black Angus steaks. The garage (south end of barn) houses Eisenhower's jeep, golf carts, and station wagon. He used the "Surrey with the Fringe on Top" to show guests around the farm.
- The *skeet range* is an easy walk from the Reception Center. An exhibit details Eisenhower's shooting prowess and explains the rules of trap and skeet.
- The *Farm 2* tour explores Eisenhower's cattle operation. The show barn contains the herdsman's office, cattle stalls, and farm machinery.

Barn This 1887 bank barn held hay and straw on the top floor. The lower level first contained dairy

cattle stanchions and stalls. In the mid-1950s it held stables for the horses and ponies Eisenhower kept for his grandchildren.

Secret Service Office Secret Service protection began at the farm in 1955, ceased in 1961, and resumed after President Kennedy's assassination.

Guest House Young David Eisenhower stayed here one summer while working for his grandfather as a farmhand. The bell is from the Pitzer schoolhouse that stood on the nearby property where son John and Barbara Eisenhower lived from 1959 to 1964.

Eisenhower Home North of the fieldstone wing of the main house is a section salvaged from the original Redding farmhouse.

Putting Green Ike loved golf. The Professional Golfers Association installed this putting green in the 1950s, complete with a sand trap.

Flag Pole When President Eisenhower stayed here the flagpole displayed the Presidential standard and the Stars and Stripes. After leaving the White House in 1961 he was reinstated as General of the Army and flew the five-star flag, today a symbol of Eisenhower at Gettysburg.

Path to Farm 2 Cross the bridge to the site of the cattle operation (trail not recommended for wheelchairs). The culvert in the stream marks the boundary between Eisenhower's farm and Farm 2 (acquired in 1954 by Eisenhower's partner, W. Alton Jones, to raise purebred Angus).

Herdsman's Home This 1797 house was home for Bob Hartley, Eisenhower's herdsman. Hartley charted breeding schedules, selected new Angus to improve the breed, and oversaw farm operations.

Maternity Barn This barn, a luxury for a livestock operation, sheltered cows and newborn calves.

Breeding and Tool Shed The north bay provided a breeding area for bulls and cows. Each mating was carefully recorded. The south bay held a workbench and tools.

Loafing Shed This three-sided shed provided dry shelter in winter and a shaded retreat in summer.

Bull Pens Breeding bulls lived here. Ankonian 3551 sired prize-winning offspring for more than 10 years.

Show Barn To prepare for competitions, animals were brushed daily and bathed weekly.



Eisenhower and herdsman Bob Hartley display a bull ready for the show ring. Eisenhower shared his enthusiasm for the cattle business with foreign leaders such as Soviet Premier Nikita Khrushchev, French President Charles de Gaulle, and Great Britain's former Prime Minister Winston Churchill. An invitation to the farm was a highlight for dignitaries.

Planning Your Visit

Tours and Fees Buy tour tickets (first-come, first-served) at the Gettysburg National Military Park Visitor Center, located one mile south of Gettysburg on U.S. Business 15. Prices include shuttle bus ticket and entrance to the home, grounds, and farm.

Shuttle Bus Entrance to the Eisenhower farm is by shuttle bus only. Catch the bus at the Gettysburg National Military Park Visitor Center. Schedules vary seasonally.

When to Visit The site is open daily, except Thanksgiving, December 25, and January 1.

Activities After you arrive at the park you are welcome to explore on your own. Ranger-led programs are offered season-

ally. Families with children can participate in the Junior Secret Service Agent program.

Accessibility The shuttle bus, Reception Center, farm grounds, and first floor of the home are accessible for visitors with disabilities.

For More Information Eisenhower National Historic Site
97 Taneytown Road
Gettysburg, PA 17325
717-338-9114
www.nps.gov/eise

Eisenhower National Historic Site is one of more than 380 parks in the National Park System. The National Park Service cares for these special places so that all may experience our heritage. Visit www.nps.gov.

©GPO:2005-310-394/00232
Printed on recycled paper.

