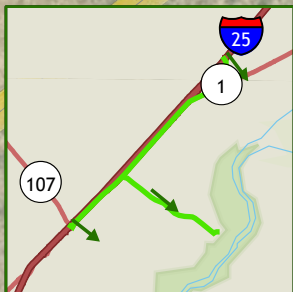


# Fort Craig Trail Map



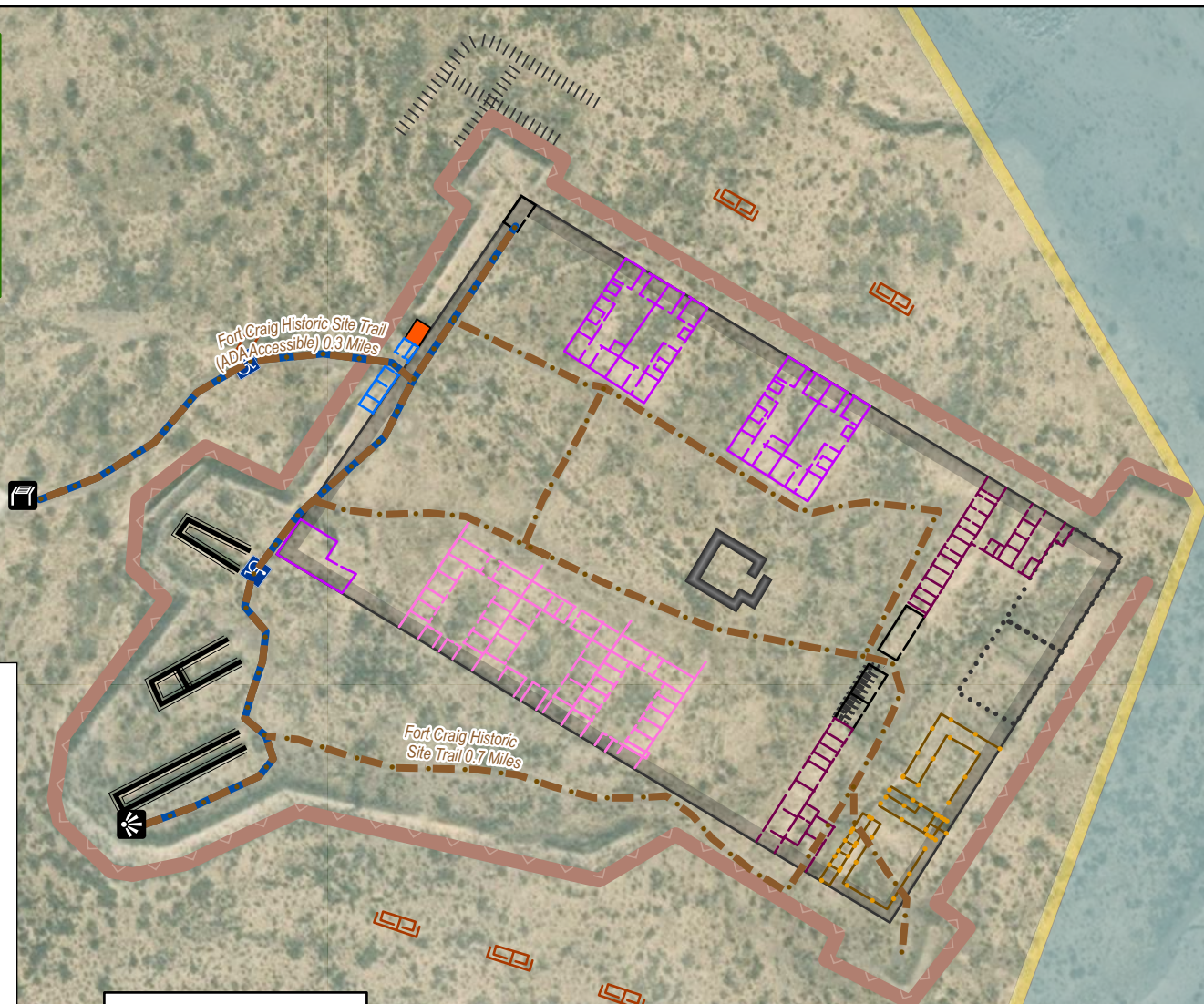
**Directions:**  
 Fort Craig is about 35 miles south of Socorro. From the north, take I-25 to the San Marcial exit, then east over the Interstate, and south on old Highway 1 (about 11 miles). Then follow the signs to Fort Craig. (If traveling on I-25 from the south, take exit 115.)



US Bureau of Land Management	Corral
Private	Inner Wall
New Mexico State Park	Extended N Bastion
Directions	Prison Room
Officers' Quarters	Magazine
Soldier's Quarters	Log Structures
Adj Office	Parking
Guard House	Visitor Center
Stables	Picnic Area
Southeast Rooms	Scenic Overlook
Log Stone Structures	Kiosk
Commissary	Restroom
Latrine	Trail
Ditch	Trail (ADA Accessible)

Hiking	Keep Pets on Leash	No Motorized Vehicles



Contact us at:  
 Bureau of Land Management  
 Socorro Field Office  
 901 S. Highway 85  
 Socorro, NM 87801  
 575-835-0412  
[www.blm.gov/new-mexico](http://www.blm.gov/new-mexico)



No warranty is made by the Bureau of Land Management as to the accuracy, reliability, or completeness of this data for individual or aggregate use with other data. Original data was compiled from various sources and may be updated without notification.

This map is for reference only. You must have written or verbal permission from private property owners for use of their legally posted private lands for any purpose including crossing these lands by foot or vehicle to get to public and State Trust lands not accessible by public means. The BLM, reminds Public Land users to practice safe, responsible recreation. Remember, you are a guest when using or crossing private lands, and this access is a privilege, not a right.

