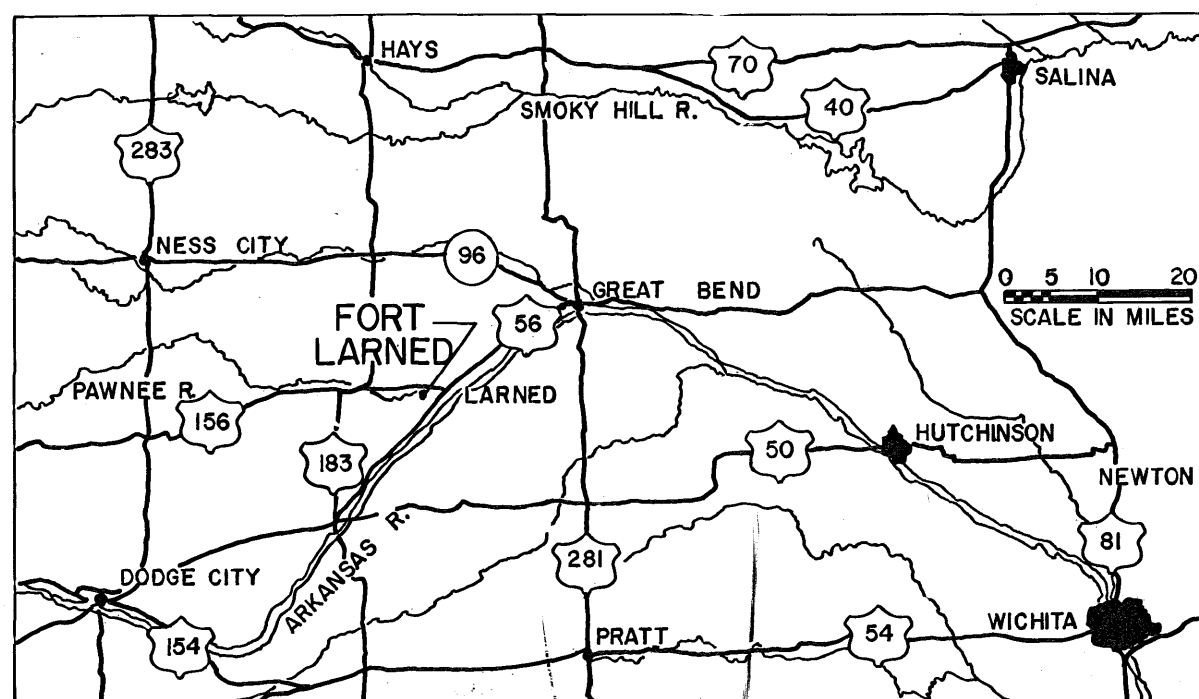


FORT LARNED

PAWNEE COUNTY KANSAS

BARRACKS

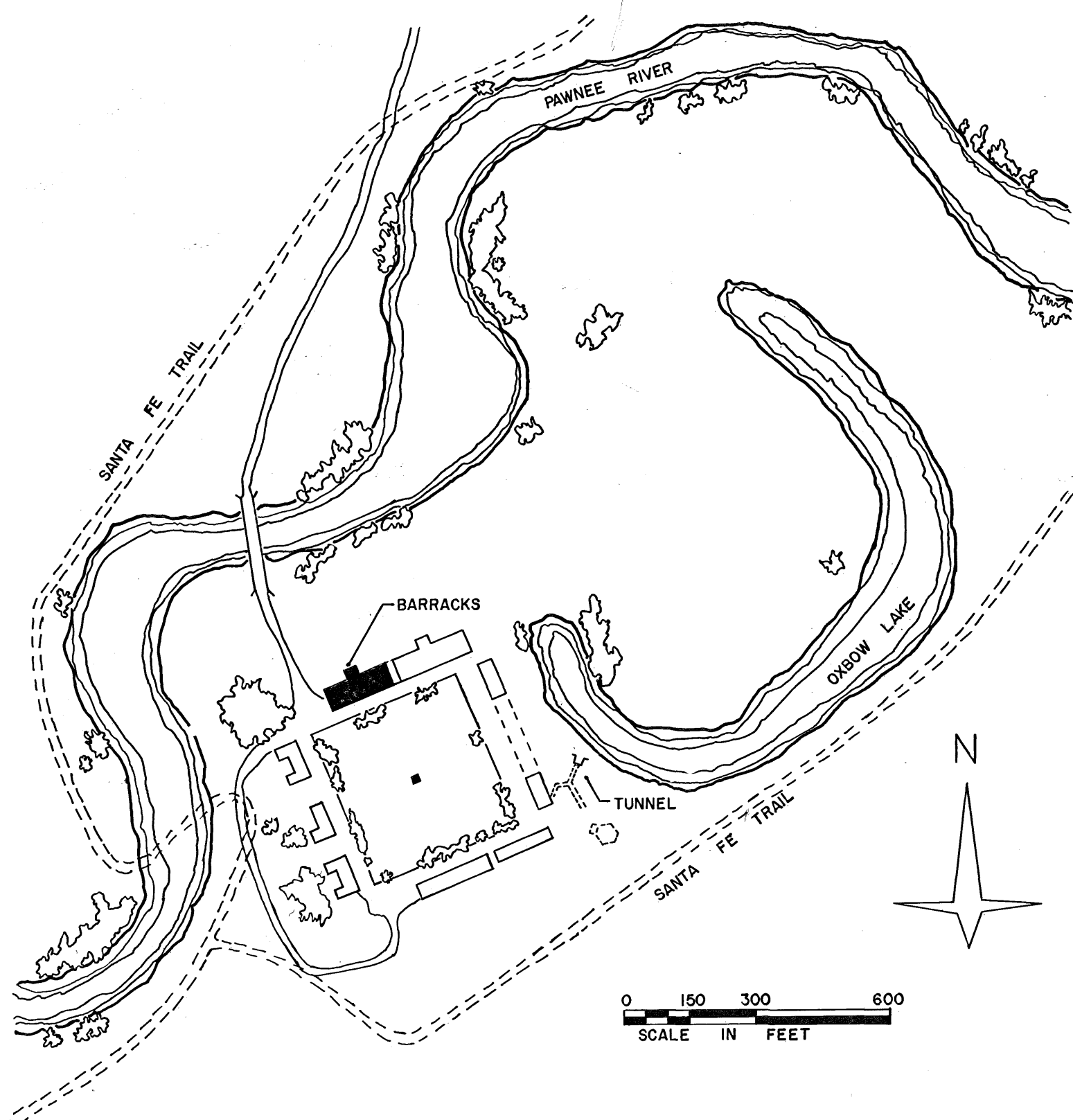


FORT LARNED WAS ORIGINALLY BUILT OF ADOBE. IN 1865 THE FIRST STONE STRUCTURE WAS ERECTED. BY 1868 THERE WERE TEN PERMANENT SANDSTONE BUILDINGS. NINE OF THESE STILL STAND TO BE VIEWED BY THE PUBLIC. THE BUILDING OF BARRACKS PROBABLY BEGAN IN LATE 1866, SINCE A DRAWING MADE IN JUNE, 1867 SHOWS ONE SET OF BARRACKS COMPLETED. EACH BUILDING WAS DESIGNED TO ACCOMMODATE TWO COMPANIES. THE SPACE ALLOTTED EACH COMPANY WAS 40' x 40' WITH A CEILING OF ABOUT 10'; THE WALLS WERE NATIVE SANDSTONE, WITH THE ROOF STRUCTURE OF PINE TIMBERS. THESE TWO BUILDINGS CONTAINED, BESIDES THE DORMITORIES: MESS ROOMS, KITCHENS, ORDERLY ROOMS, STORAGE, AND WASHHOUSE. BY 1874 THE FORT HAD BECOME LESS IMPORTANT, AS REFLECTED BY THE SMALLER GARRISONS STATIONED THERE. SINCE A SUBSTANTIAL PART OF THE BARRACKS WAS EMPTY, THE NORTHEASTERN HALF OF THE BARRACKS WAS MADE INTO A HOSPITAL. THIS NEW HOSPITAL HAD TWO WARDS, A MESS ROOM, DISPENSARY, KITCHEN, STOREROOM, AND ATTENDANT'S ROOM.

HISTORIC FORT LARNED WAS ESTABLISHED BY THE GOVERNMENT IN 1859 BECAUSE IT HAD BECOME ESSENTIAL THAT A PERMANENT BASE FOR TROOPS TO GUARD THE SANTA FE TRAIL BE LOCATED BETWEEN FORTS LEAVENWORTH AND RILEY TO THE EAST AND FORT UNION, NEW MEXICO, TO THE WEST. AS TREATIES WERE SIGNED WITH VARIOUS INDIAN TRIBES, FORT LARNED BECAME THE STATION FROM WHICH ANNUITIES WERE HANDED OUT TO PLAINS INDIANS. KIOWAS, COMMANCHES, CHEYENNES, AND ARAPAHOS GATHERED THERE.

IN SPITE OF THE TREATIES INDIAN WARS BROKE OUT IN 1864 AND 1868 CAUSING FORT LARNED TO BE USED AS A BASE FOR MAJOR CAMPAIGNS. SUCH MEN AS — MAJ. J. E. B. STUART, COL. KIT CARSON, WILD BILL HICKOK, BUFFALO BILL CODY, AND GENERALS HANDCOCK, SHERIDAN, AND CUSTER WERE BASED AT THIS FORT.

THE LAST IMPORTANT CONFLICT OCCURRED IN NOVEMBER, 1868. FROM THIS TIME ON, THE FORT BECAME LESS AND LESS IMPORTANT UNTIL 1884 WHEN IT WAS SOLD TO A PRIVATE CONCERN WHICH CONVERTED IT INTO A STOCK RANCH. AROUND 1919-20 SOME OF THE BUILDINGS WERE MODIFIED TO PROVIDE A BETTER BASIS AS A RANCH. IN 1957 THE FORT WAS OPENED TO THE PUBLIC AS A TOURIST ATTRACTION.



RECORDED BY THE UNITED STATES NATIONAL PARK SERVICE

THIS PROJECT WAS FINANCED FROM FUNDS OF THE "MISSION 66" PROGRAM OF THE NATIONAL PARK SERVICE PROJECT UNDER THE DIRECTION OF CHARLES S. POPE, SUPERVISING ARCHITECT, HISTORIC STRUCTURES.

MEASURED AND DRAWN JULY-AUGUST, 1965, UNDER THE SUPERVISION OF MORRIS H. BECKMAN, AIA, ARCHITECT, KANSAS STATE UNIVERSITY BY STUDENT ARCHITECTS OF KANSAS STATE UNIVERSITY:

MARY F. CHILDRES
BRUCE W. HECKMAN

GARY R. JARVIS
DON M. SEYFERT

CORYDON SMITH

DRAWN BY: MARY CHILDRES

WESTERN OFFICE
NATIONAL PARK SERVICE
UNDER DIRECTION OF THE NATIONAL PARK SERVICE,
UNITED STATES DEPARTMENT OF THE INTERIOR

BARRACKS (WEST)

NAME AND LOCATION OF STRUCTURE

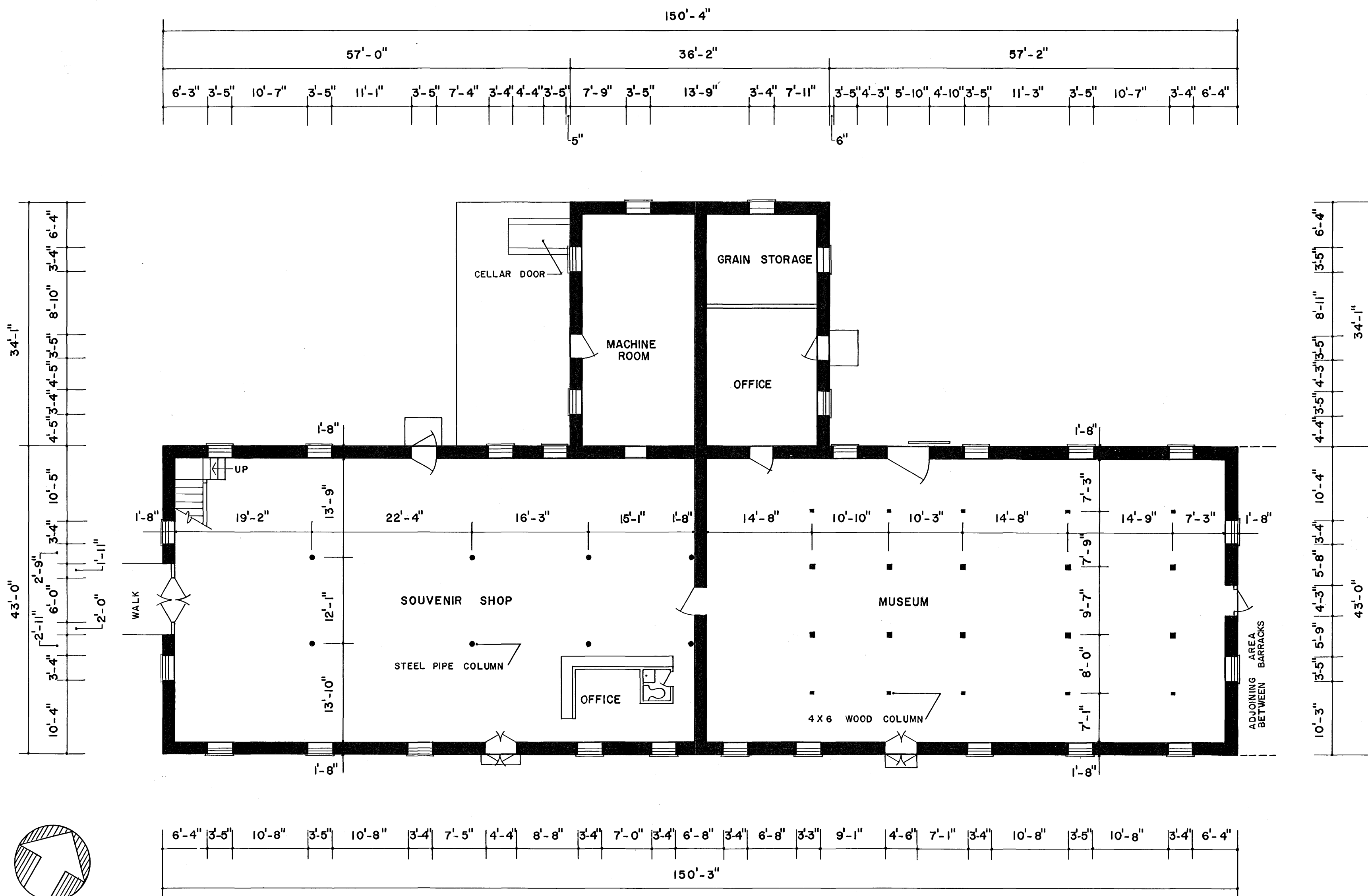
FORT LARNED

PAWNEE COUNTY, KANSAS

SURVEY NO.
KANS
21

HISTORIC AMERICAN
BUILDINGS SURVEY
SHEET 1 OF 5 SHEETS

LIBRARY OF CONGRESS
INDEX NUMBER



FIRST FLOOR PLAN



DRAWN BY: GARY R. JARVIS

WESTERN OFFICE
 NATIONAL PARK SERVICE
 UNDER DIRECTION OF THE NATIONAL PARK SERVICE,
 UNITED STATES DEPARTMENT OF THE INTERIOR

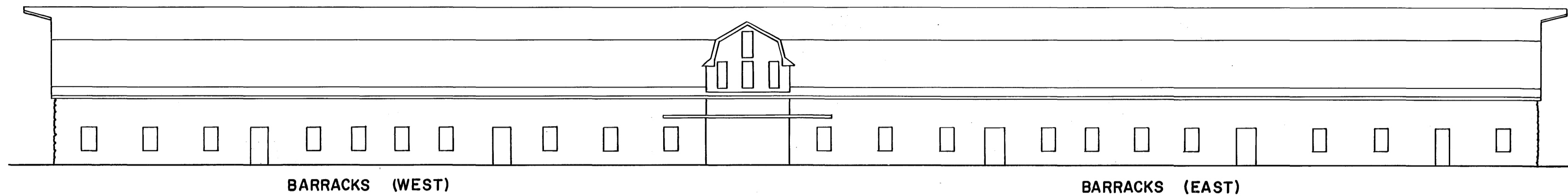
BARRACKS (WEST)

NAME AND LOCATION OF STRUCTURE
FORT LARNED
 PAWNEE COUNTY, KANSAS

SURVEY NO.
 KANSAS
 21

HISTORIC AMERICAN
 BUILDINGS SURVEY
 SHEET 2 OF 5 SHEETS

LIBRARY OF CONGRESS INDEX NUMBER

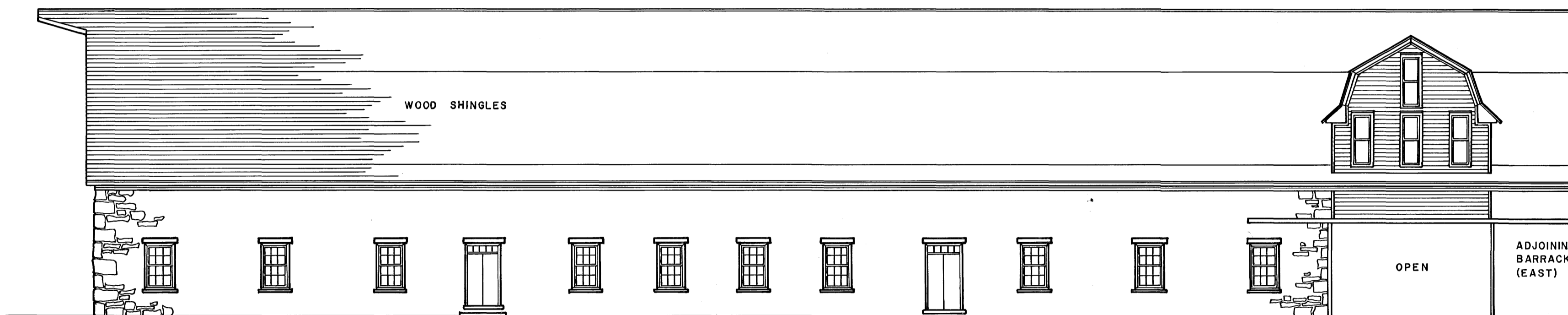


BARRACKS (WEST)

BARRACKS (EAST)

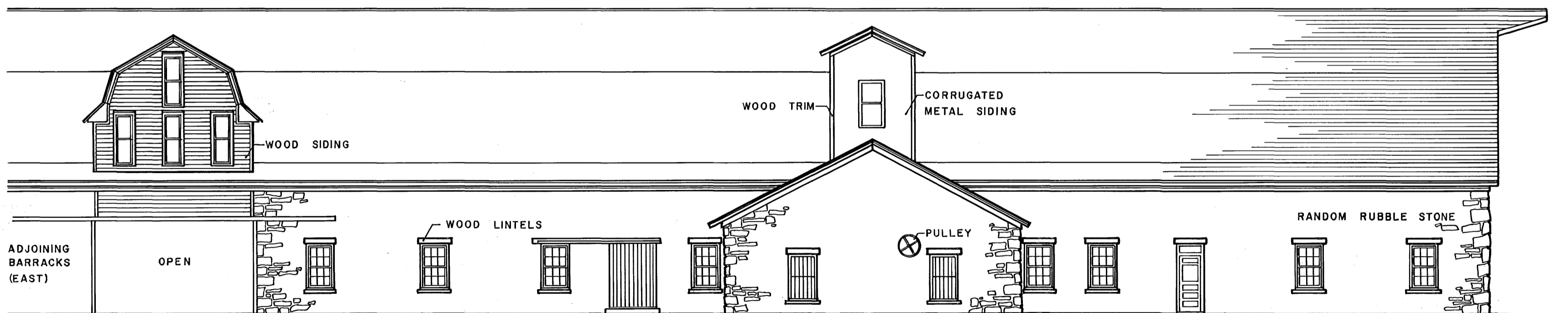
DIAGRAM OF SOUTH ELEVATION

SCALE 2



FRONT (SOUTH) ELEVATION

SCALE 1



REAR (NORTH) ELEVATION

SCALE 1

SCALE 1 0 2 4 6 8 10 12 32 FEET

SCALE 2 0 4 8 12 16 20 24 64 FEET

DRAWN BY: DON M. SEYFERT

WESTERN OFFICE
NATIONAL PARK SERVICE
UNDER DIRECTION OF THE NATIONAL PARK SERVICE,
UNITED STATES DEPARTMENT OF THE INTERIOR

BARRACKS (WEST)

NAME AND LOCATION OF STRUCTURE

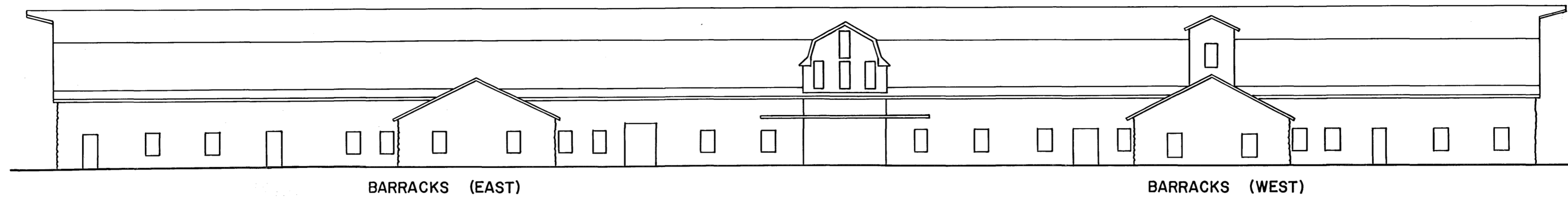
FORT LARNED

PAWNEE COUNTY, KANSAS

SURVEY NO.
KANS.
21

HISTORIC AMERICAN
BUILDINGS SURVEY
SHEET 3 OF 5 SHEETS

LIBRARY OF CONGRESS
INDEX NUMBER

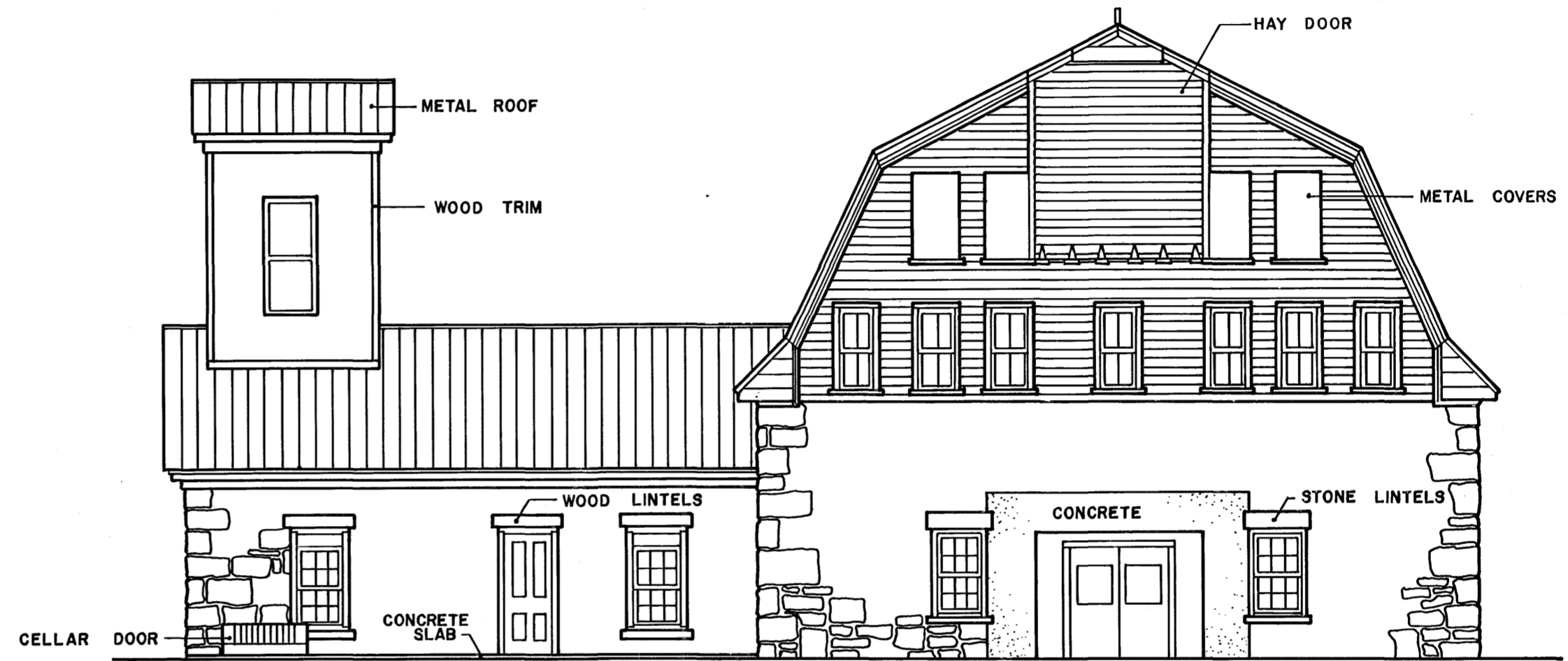


BARRACKS (EAST)

BARRACKS (WEST)

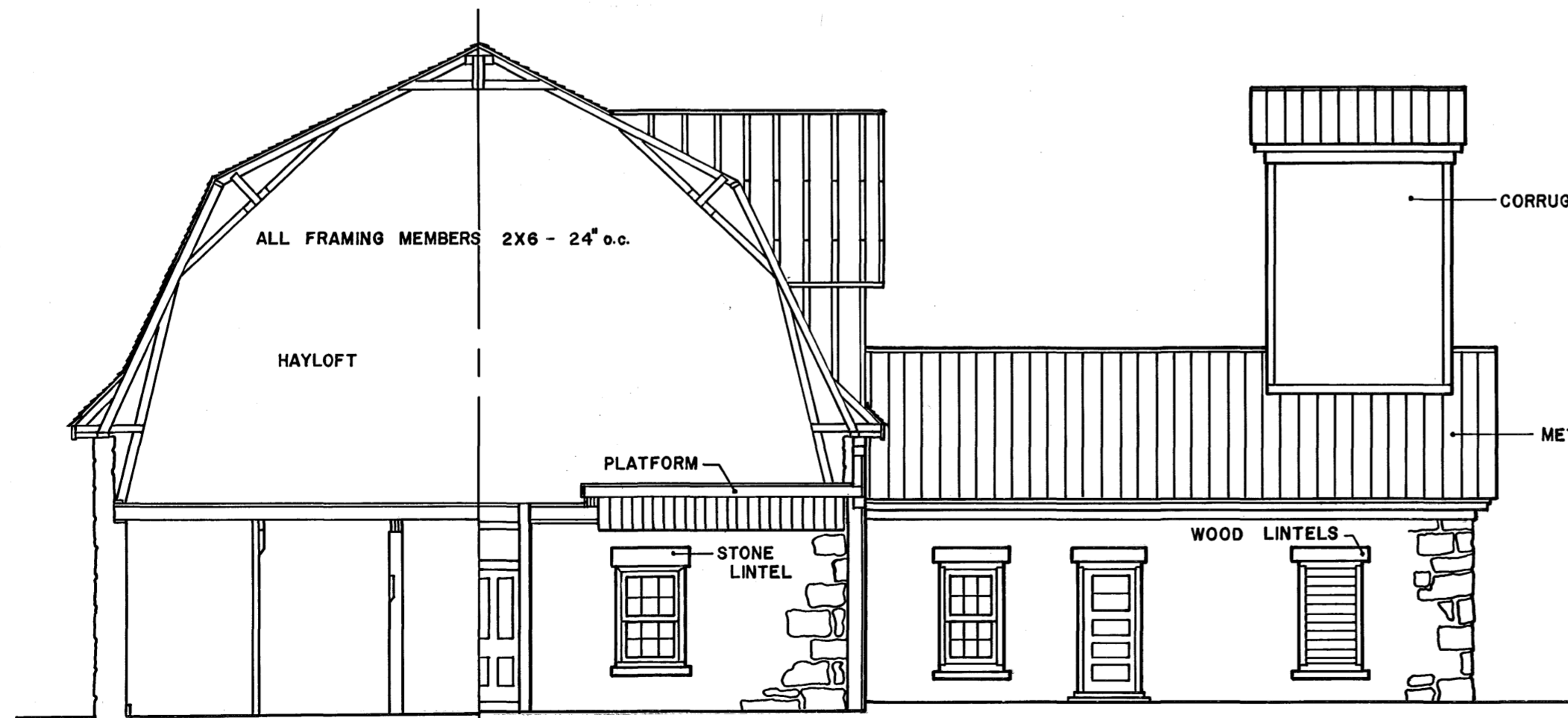
DIAGRAM OF NORTH ELEVATION

SCALE 1



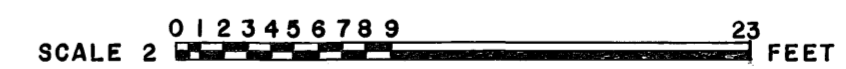
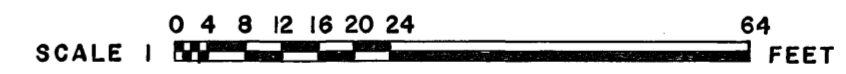
WEST ELEVATION

SCALE 2



CROSS SECTION & EAST ELEVATION

SCALE 2



DRAWN BY: BRUCE HECKMAN

WESTERN OFFICE
 NATIONAL PARK SERVICE
 UNDER DIRECTION OF THE NATIONAL PARK SERVICE,
 UNITED STATES DEPARTMENT OF THE INTERIOR

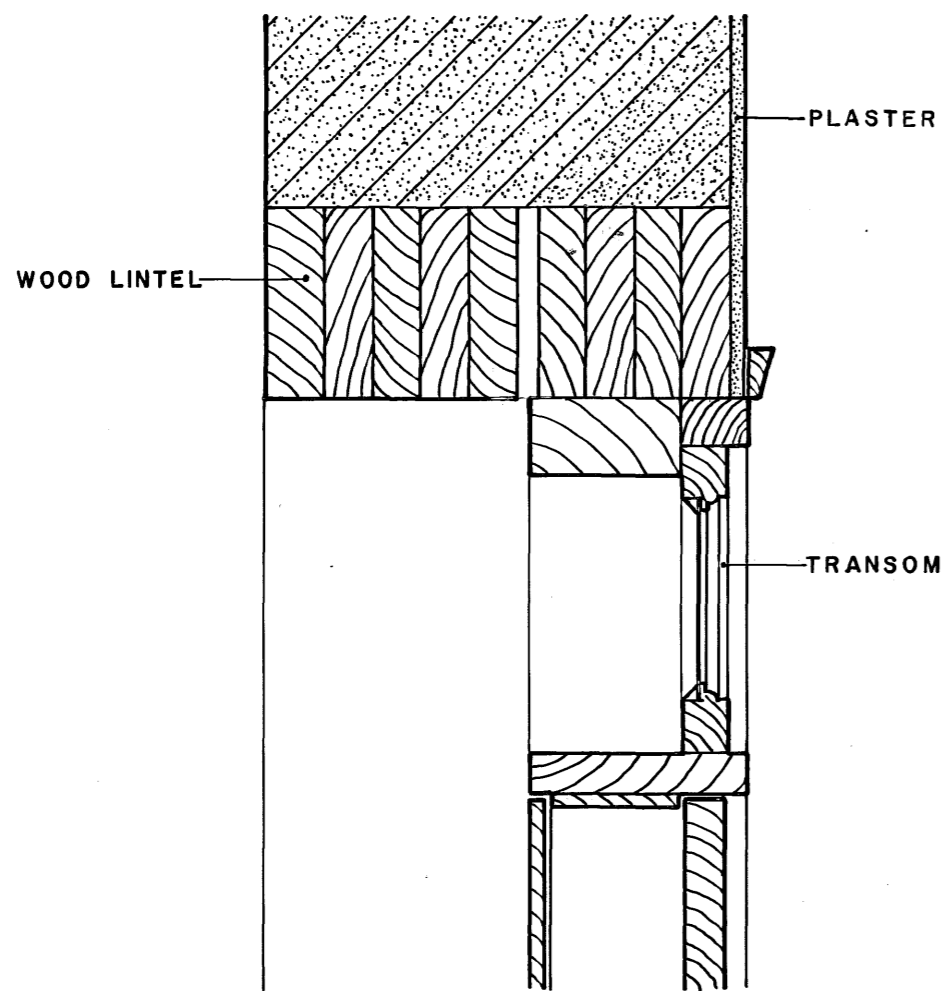
NAME AND LOCATION OF STRUCTURE

FORT LARNED
 BARRACKS (WEST) PAWNEE COUNTY, KANSAS

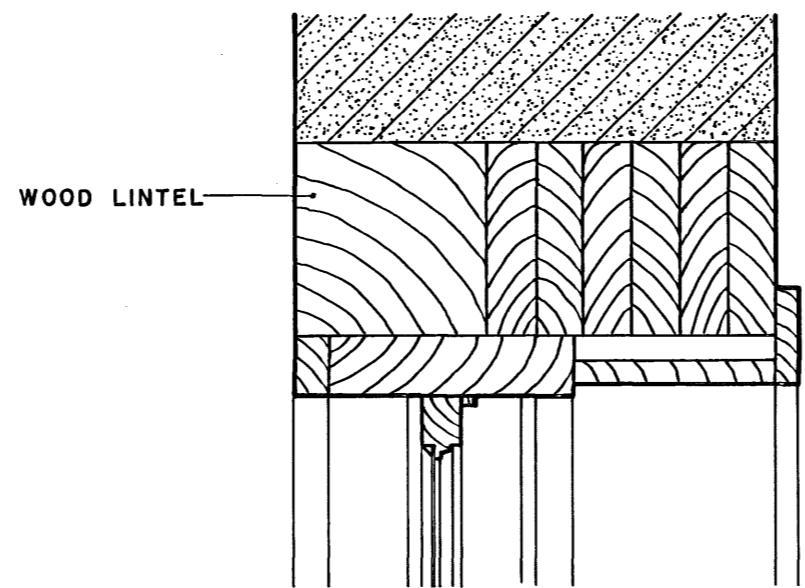
SURVEY NO.
 KANS
 21

HISTORIC AMERICAN
 BUILDINGS SURVEY
 SHEET 4 OF 5 SHEETS

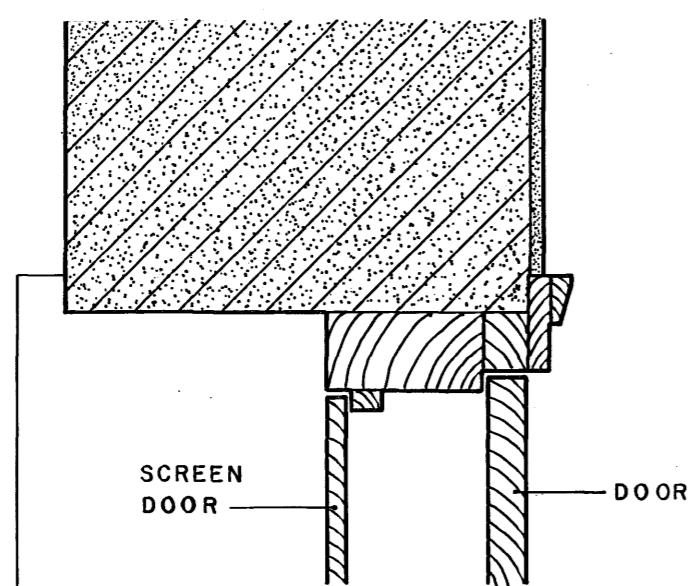
LIBRARY OF CONGRESS INDEX NUMBER



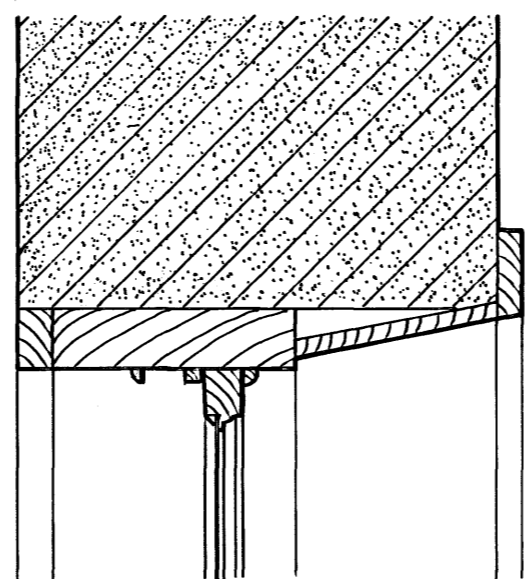
HEAD



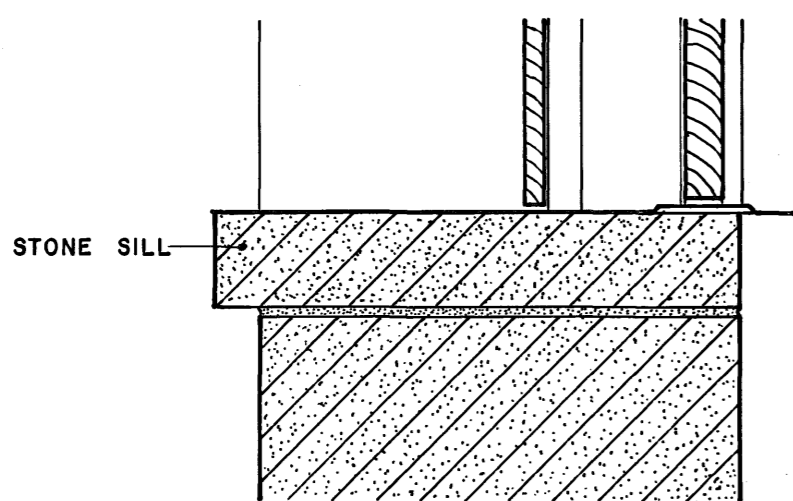
HEAD



JAMB

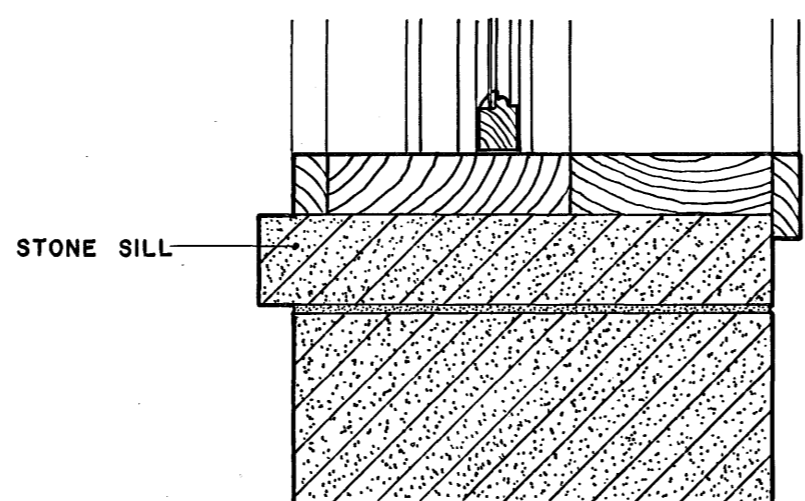


JAMB



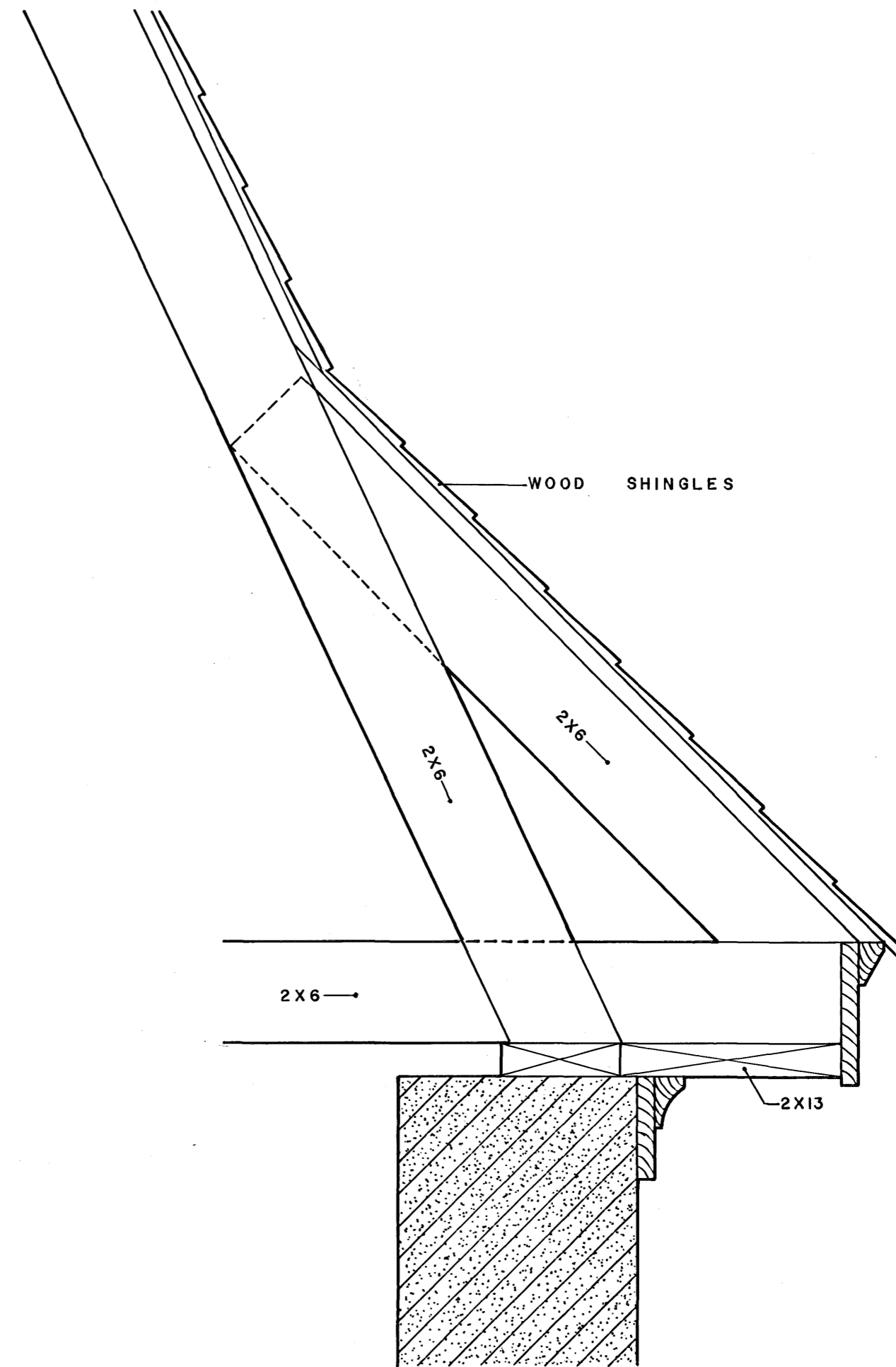
SILL

DOOR

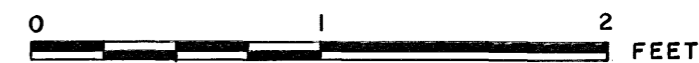


SILL

WINDOW



CORNICE



DRAWN BY: CORYDON SMITH

WESTERN OFFICE
 NATIONAL PARK SERVICE
 UNDER DIRECTION OF THE NATIONAL PARK SERVICE,
 UNITED STATES DEPARTMENT OF THE INTERIOR

NAME AND LOCATION OF STRUCTURE

BARRACKS (WEST) FORT LARNED PAWNEE COUNTY, KANSAS

SURVEY NO.
 KANS
 21

HISTORIC AMERICAN
 BUILDINGS SURVEY
 SHEET 5 OF 5 SHEETS

LIBRARY OF CONGRESS INDEX NUMBER



HABS KANSAS 21



KODAK SAFETY FILM

HABS KANSAS 21

WELCOME
TO
FORT LARNED

FORT SUTLER'S STORE

ENTRANCE



COLLECTED
MEXICAN
HERBARIUM

PAERS KAUS 21



LEL
A.L.D.
1871

D.E. DEELY
1871

ALBER
FINEB

ACE
CCE

T. SNOWDEN

EF
STAR
GUC
MARRIS
AND WHITE M

WALK
1870
M.V.T. H. DEL
G. PEPERSO

W. H. C. B.

1874
JULY 5

INDUSTRY
ILL.

EDC
E. P. FLESHER
1874

RR. HEIN
MAY 1877
GWINLAN

HEIN
JACKSON
1877

M. HOUSE

H.C.
W.H.D.F.

W.H.F.
1877





МЛТ - УТТМЭЭ - МАДХ - ЛИГ
HAPS KAYS 21
KODAK - 8 MILETA



МЛТ--УТІТІАВ--КАДК

НВБ КАНС 21

HABS KINGS 21



KODAK SAFETY FILM







МИФ--СЪЛТАН--ААК

Н Д Б С

К А В С 21



МЛП - ХТЭЛЭГЭЭ - ЗАВЦУУЛ - КООДЫН
НАБС ХААДС 21