

FORT LARNED KANSAS.

Sutler's Store

Dimensions 36 ft front by 50 ft deep and 12 ft high containing 3 rooms in which are several stoves
 Kitchen Store Cellar under center building and 10 ft
 of cell and New in them in case of building 1st floor
 Thickness of walls Cellar 4 ft of building 1st floor
 In cellar 3 windows in each room 2 ft square and 2
 with glass panes and 2 windows in each room 2 ft square
 with glass panes and 2 windows in each room 2 ft square
 & Chimneys Brick one pipe in chimney on West end
 building from cellar to top of building on each back room
 Front Room Windows and sliding on side and one of
 this panes made heavy panel work which is
 finished and painted and all the partitions and wood
 work of the best material and workmanship and all well
 by painted. Roof done double with tin on all doors and
 Roof Shingles of the best quality
 Keel in the summer of 1865 at a cost of \$5000-

Stabling and Corral.

Two stables one carriage house one chicken house and
 one knock house built in a continuous bank with stone
 beyond horse stalls measuring 120 ft front 12 ft deep
 Rejoice below hay house and wash Cost \$600
 The other for building and filling in was bought from
 a Mr. Miller and all timber used brought from Texas
 enough to distance of 200 miles.

Mess House - Frame filled with plank

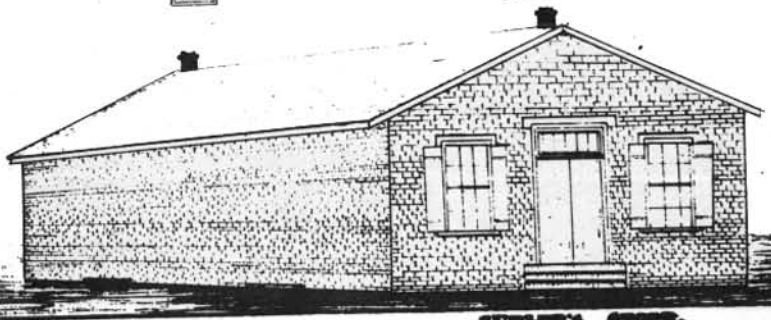
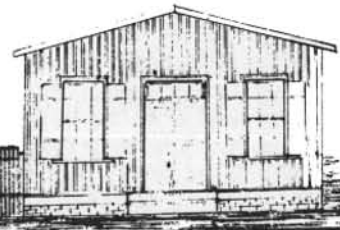
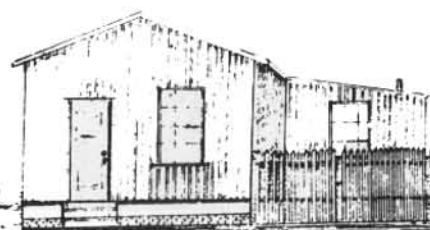
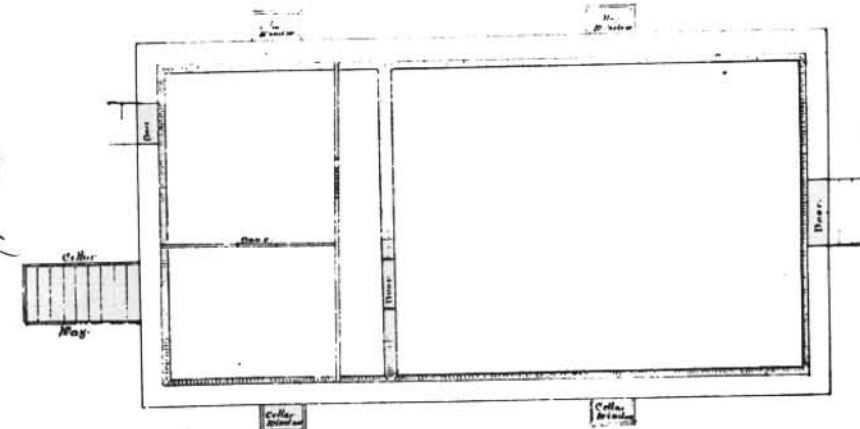
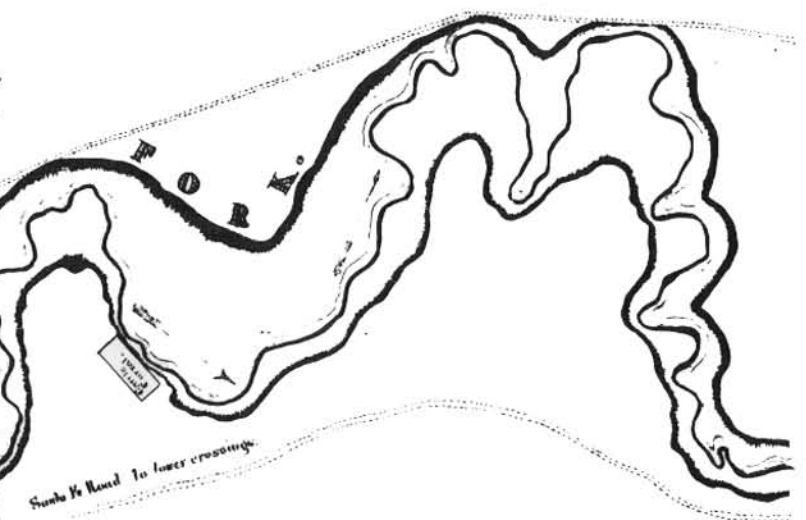
Dimensions 36 ft front by 24 ft deep and 12 ft high
 containing 3 rooms in which are several stoves
 Kitchen Store Cellar under center building and 10 ft
 of cell and New in them in case of building 1st floor
 Thickness of walls Cellar 4 ft of building 1st floor
 In cellar 3 windows in each room 2 ft square and 2
 with glass panes and 2 windows in each room 2 ft square
 with glass panes and 2 windows in each room 2 ft square
 & Chimneys Brick one pipe in chimney on West end
 building from cellar to top of building on each back room
 Front Room Windows and sliding on side and one of
 this panes made heavy panel work which is
 finished and painted and all the partitions and wood
 work of the best material and workmanship and all well
 by painted. Roof done double with tin on all doors and
 Roof Shingles of the best quality
 Keel in the summer of 1865 at a cost of \$1700-

Sutler's Dwelling

Frame filled in with stone and plank
 Dimensions 36 ft front by 24 ft deep and 12 ft high
 containing 3 rooms in which are several stoves
 Kitchen Store Cellar under center building and 10 ft
 of cell and New in them in case of building 1st floor
 Thickness of walls Cellar 4 ft of building 1st floor
 In cellar 3 windows in each room 2 ft square and 2
 with glass panes and 2 windows in each room 2 ft square
 with glass panes and 2 windows in each room 2 ft square
 & Chimneys Brick one pipe in chimney on West end
 building from cellar to top of building on each back room
 Front Room Windows and sliding on side and one of
 this panes made heavy panel work which is
 finished and painted and all the partitions and wood
 work of the best material and workmanship and all well
 by painted. Roof done double with tin on all doors and
 Roof Shingles of the best quality
 Keel in the summer of 1865 at a cost of \$1800-

Cost of improvements

Sutler's Store	\$ 5000
Mess House	1700
Dwelling	1800
Stables etc	600
<hr/>	
	\$ 9100



SUTLER'S MESS ROOMS.

SUTLER'S STORE.