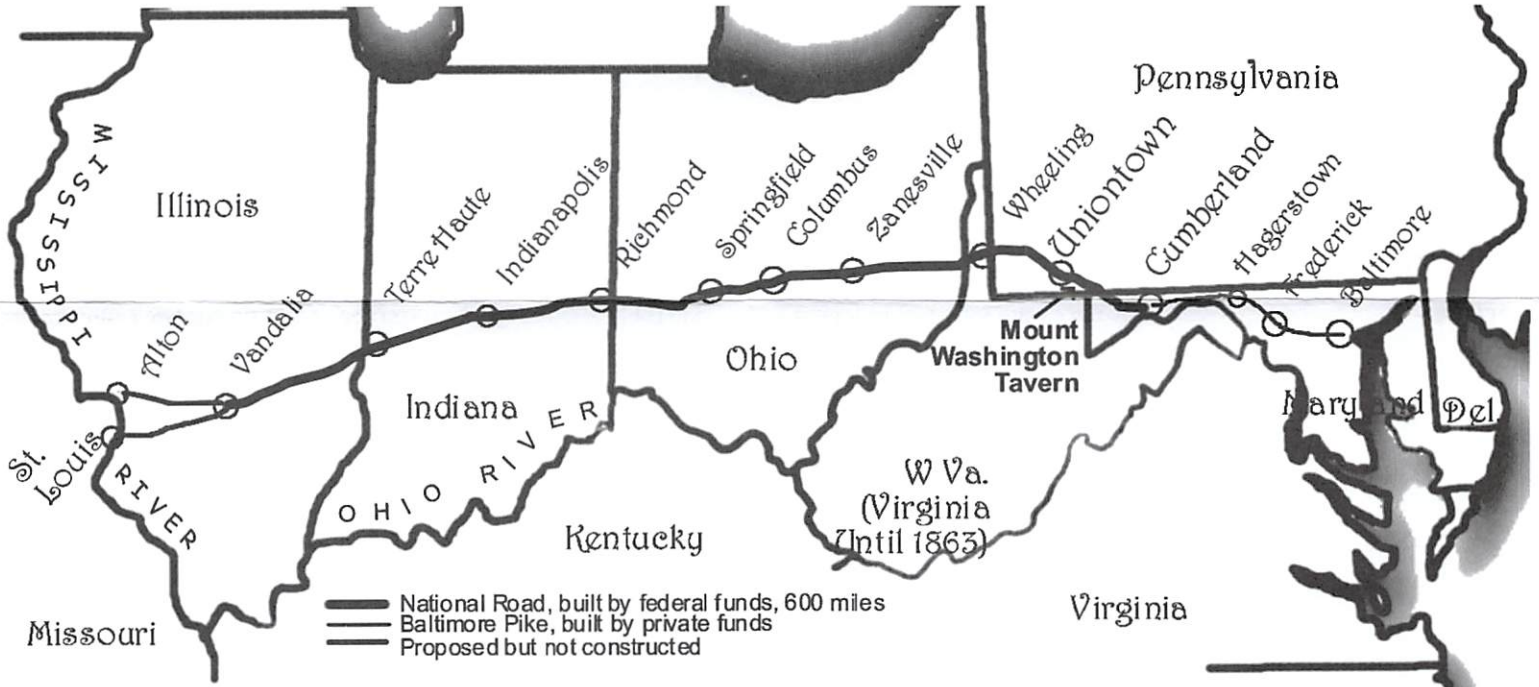




## The National Road



The National Road, designated U.S. Route 40 in 1925, was the first highway built entirely with federal funds. The road was authorized by Congress in 1806 during the Jefferson Administration. Construction began in Cumberland, Maryland in 1811. The route closely paralleled the military road opened by George Washington and General Braddock in 1754-55.

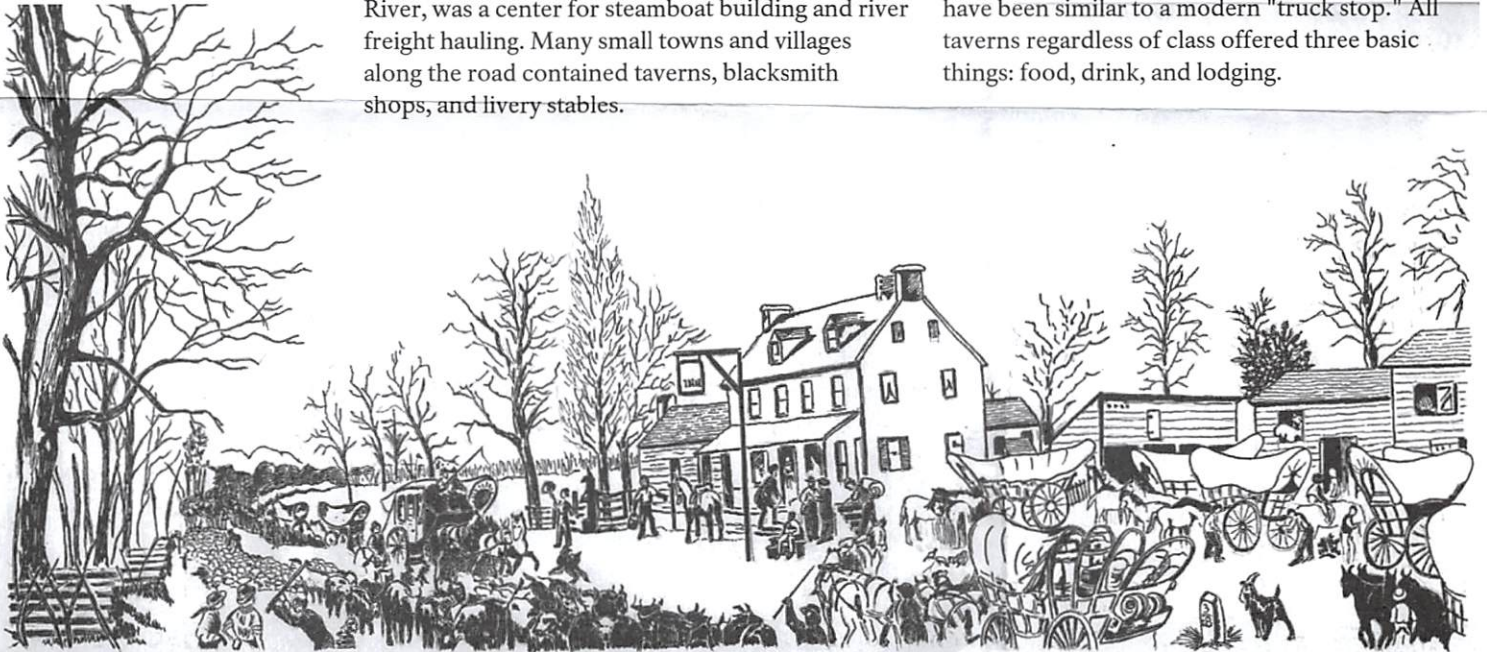
By 1818, the road had been completed to the Ohio River at Wheeling, which was then in Virginia. Eventually the road was pushed through central Ohio and Indiana, reaching Vandalia, Illinois in the 1830s where construction ceased due to a lack of funds. The National Road opened the Ohio River Valley and the Midwest for settlement and commerce.



### Traveling

The opening of the road saw thousands of travelers heading west over the Allegheny Mountains to settle the rich land of the Ohio River Valley. Small towns along the National Road's path began to grow and prosper with the increase in population. Towns such as Cumberland, Uniontown, Brownsville, Washington, and Wheeling evolved into commercial centers of business and industry. Uniontown was the headquarters for two major stagecoach lines which carried passengers over the National Road. Brownsville, on the Monongahela River, was a center for steamboat building and river freight hauling. Many small towns and villages along the road contained taverns, blacksmith shops, and livery stables.

Taverns were probably the most important and numerous businesses found on the National Road. It is estimated there was about one tavern every mile on the National Road. There were two different classes of taverns on the road. The stagecoach tavern was one type. It was the more expensive accommodation, designed for the affluent traveler. Mount Washington Tavern was a stagecoach tavern. The other class of tavern was the wagon stand, which would have been more affordable for most travelers. A wagon stand would have been similar to a modern "truck stop." All taverns regardless of class offered three basic things: food, drink, and lodging.

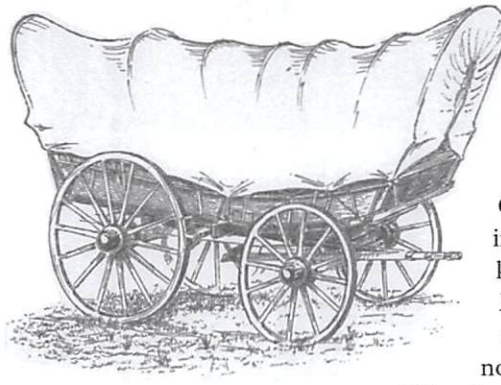




## Traffic

During the heyday of the National Road, traffic was heavy throughout the day and into the early evening. Almost every kind of vehicle could be seen on the road. The two most common vehicles were the stagecoach and the Conestoga wagon. Stagecoach travel was designed with speed in mind. Stages would average 60 to 70 miles in one day.

The Conestoga wagon was the "tractor-trailer" of the 19th century. Conestogas were designed to carry heavy freight both east and west over the Allegheny Mountains.



These wagons were brightly painted with red running gears, Prussian blue bodies, and white canvas coverings. A Conestoga wagon, pulled by a team of six draft horses, averaged 15 miles a day.

Cast iron mile markers, set out in the early 1830s, let travelers know distances on the road. Many of the original road markers may be found on the north side of the highway.

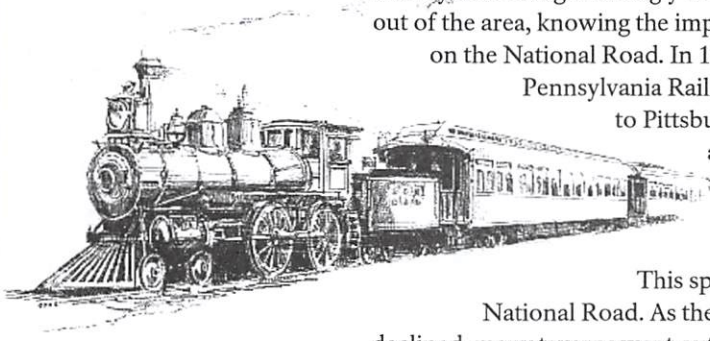
Fiberglass reproduction obelisks were set out to replace the missing cast iron obelisks in 1998.

## Decline

By the early 1850s, technology was changing the way people traveled. The steam locomotive was being perfected and soon railroads would cross the Allegheny Mountains. The people of Southwestern Pennsylvania fought strongly to keep the railroad out of the area, knowing the impact it would have on the National Road. In 1852, the

Pennsylvania Railroad was completed to Pittsburgh and shortly after, the B & O Railroad reached Wheeling.

This spelled doom for the National Road. As the traffic quickly declined, many taverns went out of business.

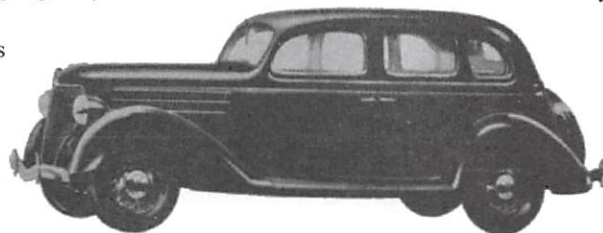


An article in Harper's Magazine in November 1879 declared, "The national turnpike that led over the Alleghenies from the East to the West is a glory departed...Octogenarians who participated in the traffic will tell an enquirer that never before were there such landlords, such taverns, such dinners, such whiskey...or such an endless calvacades of coaches and wagons." A poet lamented "We hear no more the clanging hoof and the stagecoach rattling by, for the steam king rules the traveled world, and the Old Pike is left to die."

## Revival

Just as technology caused the National Road to decline, it also led to its revival with the invention of the automobile in the early 20th century. As "motor touring" became a popular pastime, the need for improved roads began to grow. Many early wagon and coach roads such as the National Road were revived into smoothly-paved automobile roads. The Federal Highway Act of 1921 established a program of federal aid to encourage the states to build "an adequate and connected system of highways, interstate in character." By the mid 1920s, the grid system of numbering highways was in place, thus creating U.S. Route 40 out of the ashes of the National Road.

Due to the increased automobile traffic on U.S. Route 40, a completely new network of businesses grew to aid the 20th-century traveler. Hotels, motels, restaurants, and diners replaced the stage taverns and wagon stands. The service station replaced the livery stables and blacksmith shops. Some of the National Road era buildings regained new life as restaurants, tourist homes, antique shops, and museums. Route 40 served as a major east-west artery until the Federal-Aid Highway Act of 1956 created the interstate system as we know it today. With the opening of the interstates, much traffic was diverted away.



## Future



The "Old Pike" has certainly not been "left to die" as the poet of the 19th century lamented. Technology of the 21st century combined with increased interest in historic preservation has led to the creation of heritage corridors. The National Road Heritage Corridor has been designated a state heritage park to preserve and showcase Pennsylvania's rich industrial heritage. The National Road Heritage Corridor is a partnership among government, businesses, organizations, and individuals all working together to enhance the region's economy through tourism.

The National Road story is told at the Fort Necessity/National Road Interpretive and Education Center. It is a story of American growth, development, and migration — the story of the past, present, and future of American travel.

"The Historic National Road" was designated an All-American Road by U.S. Secretary of Transportation in 2002. The designation means it has features that do not exist elsewhere in the United States and is scenic enough to be a tourist destination unto itself.



For more information on other historic sites and touring along the National Road, visit the National Road Heritage Corridor web site at [www.nationalroadpa.org](http://www.nationalroadpa.org).