



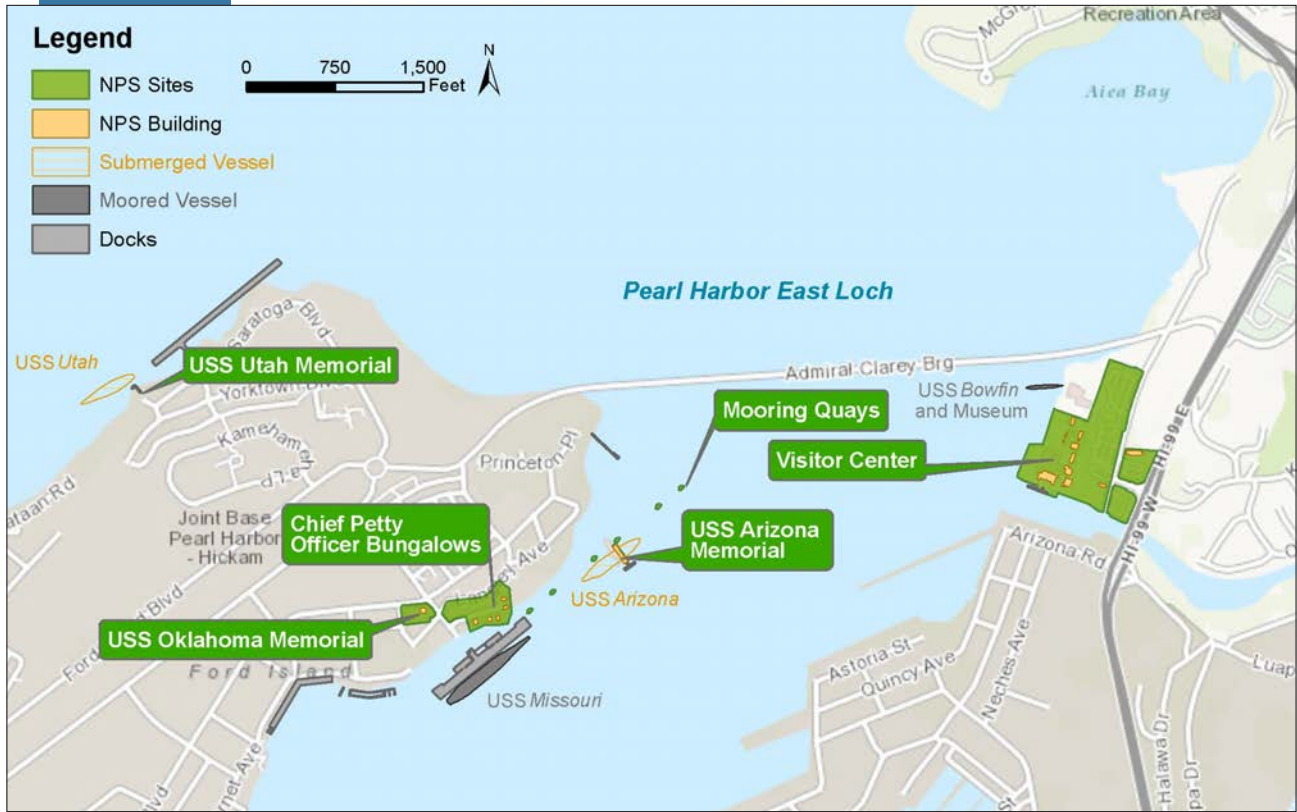
# Foundation Document

## World War II Valor in the Pacific National Monument

Pearl Harbor, Hawai'i

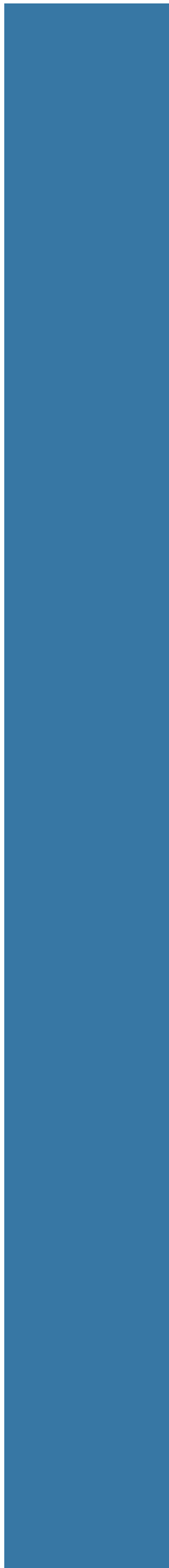
September 2015





# Contents

<b>Mission of the National Park Service . . . . .</b>	<b>1</b>
<b>Introduction. . . . .</b>	<b>2</b>
<b>Part 1: Core Components . . . . .</b>	<b>3</b>
Brief Description of the Park. . . . .	3
Park Purpose . . . . .	5
Park Significance . . . . .	6
Fundamental Resources and Values . . . . .	7
Interpretive Themes . . . . .	8
<b>Part 2: Dynamic Components . . . . .</b>	<b>9</b>
Special Mandates and Administrative Commitments . . . . .	9
Special Mandates. . . . .	9
Administrative Commitments. . . . .	11
Assessment of Planning and Data Needs . . . . .	12
Analysis of Fundamental Resources and Values . . . . .	12
Identification of Key Issues and Associated Planning and Data Needs . . . . .	12
Other Important Issues . . . . .	17
Planning and Data Needs . . . . .	17
High Priority Planning Needs . . . . .	18
High Priority Data Needs . . . . .	21
Summary of High Priority and Other Planning and Data Needs . . . . .	22
<b>Part 3: Contributors. . . . .</b>	<b>23</b>
World War II Valor in the Pacific National Monument, Pearl Harbor . . . . .	23
Pacific West Region. . . . .	23
Other NPS Staff. . . . .	23
Partners . . . . .	23
Others . . . . .	23
<b>Appendixes . . . . .</b>	<b>24</b>
Appendix A: Executive Order and Legislative Acts for World War II Valor in the Pacific National Monument, Pearl Harbor . . . . .	24
Appendix B: Related Federal Legislation . . . . .	31
Appendix C: Analysis of Fundamental Resources and Values . . . . .	32
Appendix D: Recently Completed and Ongoing Planning and Data Collection Efforts Related to Key Park Issues . . . . .	47





## Mission of the National Park Service

The National Park Service (NPS) preserves unimpaired the natural and cultural resources and values of the national park system for the enjoyment, education, and inspiration of this and future generations. The National Park Service cooperates with partners to extend the benefits of natural and cultural resource conservation and outdoor recreation throughout this country and the world.

The NPS core values are a framework in which the National Park Service accomplishes its mission. They express the manner in which, both individually and collectively, the National Park Service pursues its mission. The NPS core values are:

- **Shared stewardship:** We share a commitment to resource stewardship with the global preservation community.
- **Excellence:** We strive continually to learn and improve so that we may achieve the highest ideals of public service.
- **Integrity:** We deal honestly and fairly with the public and one another.
- **Tradition:** We are proud of it; we learn from it; we are not bound by it.
- **Respect:** We embrace each other's differences so that we may enrich the well-being of everyone.

The National Park Service is a bureau within the Department of the Interior. While numerous national park system units were created prior to 1916, it was not until August 25, 1916, that President Woodrow Wilson signed the National Park Service Organic Act formally establishing the National Park Service.

The national park system continues to grow and comprises more than 400 park units covering more than 84 million acres in every state, the District of Columbia, American Samoa, Guam, Puerto Rico, and the Virgin Islands. These units include, but are not limited to, national parks, monuments, battlefields, military parks, historical parks, historic sites, lakeshores, seashores, recreation areas, scenic rivers and trails, and the White House. The variety and diversity of park units throughout the nation require a strong commitment to resource stewardship and management to ensure both the protection and enjoyment of these resources for future generations.



*The arrowhead was authorized as the official National Park Service emblem by the Secretary of the Interior on July 20, 1951. The sequoia tree and bison represent vegetation and wildlife, the mountains and water represent scenic and recreational values, and the arrowhead represents historical and archeological values.*

## Introduction

Every unit of the national park system will have a foundational document to provide basic guidance for planning and management decisions—a foundation for planning and management. The core components of a foundation document include a brief description of the park as well as the park’s purpose, significance, fundamental resources and values, and interpretive themes. The foundation document also includes special mandates and administrative commitments, an assessment of planning and data needs that identifies planning issues, planning products to be developed, and the associated studies and data required for park planning. Along with the core components, the assessment provides a focus for park planning activities and establishes a baseline from which planning documents are developed.

A primary benefit of developing a foundation document is the opportunity to integrate and coordinate all kinds and levels of planning from a single, shared understanding of what is most important about the park. The process of developing a foundation document begins with gathering and integrating information about the park. Next, this information is refined and focused to determine what the most important attributes of the park are. The process of preparing a foundation document aids park managers, staff, and the public in identifying and clearly stating in one document the essential information that is necessary for park management to consider when determining future planning efforts, outlining key planning issues, and protecting resources and values that are integral to park purpose and identity.

While not included in this document, a park atlas is also part of a foundation project. The atlas is a series of maps compiled from available geographic information system (GIS) data on natural and cultural resources, visitor use patterns, facilities, and other topics. It serves as a GIS-based support tool for planning and park operations. The atlas is published as a (hard copy) paper product and as geospatial data for use in a web mapping environment. The park atlas for World War II Valor in the Pacific National Monument, Pearl Harbor can be accessed online at: <http://insideparkatlas.nps.gov/>.



## Part 1: Core Components

The core components of a foundation document include a brief description of the park, park purpose, significance statements, fundamental resources and values, and interpretive themes. These components are core because they typically do not change over time. Core components are expected to be used in future planning and management efforts.

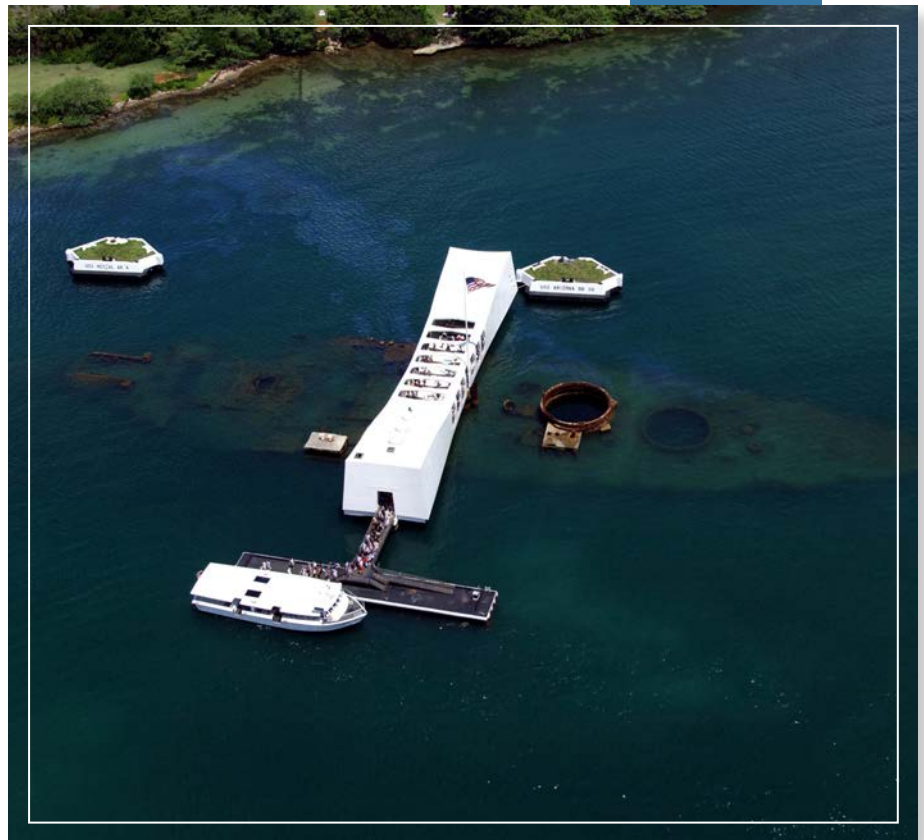
### Brief Description of the Park

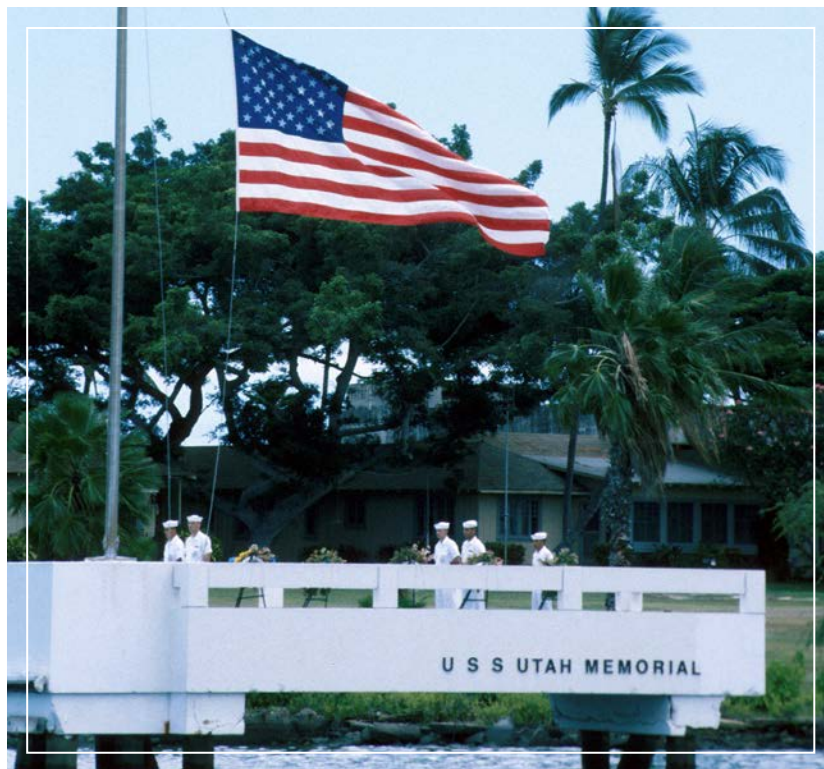
World War II Valor in the Pacific National Monument, Pearl Harbor is located in Joint Base Pearl Harbor-Hickam, on the island of Oahu in the State of Hawai'i. The Pearl Harbor area was designated a national historic landmark in 1964 for its strategic importance related to the United States' annexation of Hawaii, and for the December 7, 1941, Japanese attack during World War II. Within close proximity to downtown Honolulu and the resort area of Waikiki, the Pearl Harbor site is the most visited destination on Oahu.

Pearl Harbor is one of three locations where sites associated with the Pacific War were designated as part of the World War II Valor in the Pacific National Monument to commemorate the heroic sacrifices made in the cause of democracy and freedom during World War II. The monument also includes sites on the Aleutian Islands in Alaska and in Newell, California (Tule Lake Unit). The three locations are managed separately, but together tell the broader story of the Pacific War.

The US Fish and Wildlife Service manages the Aleutian Island sites to honor soldiers and civilians and their sacrifices near the northern limit of Imperial Japan's expansion in the Pacific. At Tule Lake, California, the national monument is managed through a partnership between the National Park Service and the US Fish and Wildlife Service to preserve, study, and interpret the setting and history of the incarceration, and later segregation, of Nikkei (US citizens of Japanese descent and resident aliens of Japanese ancestry) at Tule Lake during World War II.

The role of the National Park Service at Pearl Harbor has evolved over time. In 1958, President Dwight D. Eisenhower approved legislation for the establishment of the USS *Arizona* Memorial to commemorate military personnel killed in the Japanese attack on Pearl Harbor. The USS *Arizona* Memorial was constructed over the hull of the sunken USS *Arizona*, and dedicated by the Pacific War Memorial Commission in 1962. Visitation and management of the memorial was the responsibility of the US Navy until 1980, when operations were turned over to the National Park Service through an agreement with the US Navy. The National Park Service and US Navy jointly constructed and opened the USS *Arizona* Memorial Visitor Center in 1980.





On December 5, 2008, an Executive Order establishing World War II Valor in the Pacific National Monument expanded the NPS mission and directed the National Park Service to manage the following sites at Pearl Harbor: the USS *Arizona* Memorial and Visitor Center (now referred to as the Pearl Harbor visitor center); the USS *Utah* and USS *Oklahoma* memorials (although not the shipwrecks themselves); six Chief Petty Officer Bungalows on Ford Island; and mooring quays F6 North and South, F7 North and South, and F8 North and South (part of Battleship Row). The bungalows represent a significant element of the Battleship Row area—namely, these residences are reminders of the presence of nonmilitary individuals (families of chief petty officers assigned to work on aircraft maintenance) in a battle scene. This neighborhood came under fire during the attack and the buildings themselves provided cover for sailors and Marines swimming through burning waters toward safety.

Central to the NPS mission at Pearl Harbor is memorializing those who fell during the December 7, 1941, attack on Oahu. The USS *Arizona* Memorial honors the 1,177 crewmen who died as a result of the attack. The hull is both a tomb for more than 900 sailors who remain within and also serves as an artificial reef providing habitat for marine life. The USS *Oklahoma* Memorial honors 429 sailors who died when the ship capsized. The USS *Utah* Memorial, with its visible hull nearby, commemorates its 58 dead. Although not within the monument boundaries, both the USS *Arizona* and USS *Utah* shipwrecks are designated national historic landmarks located in Pearl Harbor. Through an agreement with the US Navy, the National Park Service is responsible for management of the archeological material features associated with the USS *Utah* and USS *Arizona* shipwrecks.

The recently expanded and renovated Pearl Harbor visitor center offers excellent opportunities to learn about the Pacific War and the December 7, 1941, attack on Oahu. The complex features two exhibit galleries, outdoor exhibits, a theater, and bookstore. From this area visitors are able to access to other Pearl Harbor Historic Sites such as the USS *Bowfin* Submarine Museum and Park, the Battleship *Missouri* Memorial, and the Pacific Aviation Museum.



## Park Purpose

The purpose statement identifies the specific reason(s) for establishment of a particular park. The purpose statement for World War II Valor in the Pacific National Monument, Pearl Harbor was drafted through a careful analysis of its enabling legislation and proclamation and the legislative history that influenced its development.

President Dwight D. Eisenhower approved creation of the USS *Arizona* Memorial in 1958 to commemorate military personnel killed in the Pearl Harbor attack. On December 5, 2008, an executive order established the USS *Arizona* Memorial and other Pearl Harbor sites as part of the World War II Valor in the Pacific National Monument, Pearl Harbor (see appendixes A and B for this proclamation and other legislation pertaining to the Pearl Harbor site). The purpose statement lays the foundation for understanding what is most important about the monument.

*WORLD WAR II VALOR IN THE PACIFIC NATIONAL MONUMENT, Pearl Harbor and its partners preserve, interpret, and commemorate the history of World War II in the Pacific from the events leading to the December 7, 1941, attack on Oahu, to peace and reconciliation.*



DoD photo by Petty Officer 2nd Class Daniel Barker, U.S. Navy.

## Park Significance

Significance statements express why a park’s resources and values are important enough to merit designation as a unit of the national park system. These statements are linked to the purpose of World War II Valor in the Pacific National Monument, Pearl Harbor and are supported by data, research, and consensus. Statements of significance describe the distinctive nature of the park and why an area is important within a global, national, regional, and systemwide context. They focus on the most important resources and values that will assist in park planning and management.

The following significance statements have been identified for World War II Valor in the Pacific National Monument, Pearl Harbor. (Please note that the sequence of the statements does not reflect the level of significance.)

- **Japan Attacks Oahu.** World War II Valor in the Pacific National Monument, Pearl Harbor interprets and preserves sites and artifacts of the December 7, 1941, Japanese military attack on Oahu, which killed more than 2,300 military and civilian personnel, and compelled the United States’ entry into World War II.
- **Pacific War Oahu.** World War II Valor in the Pacific National Monument, Pearl Harbor works collaboratively to preserve the historic settings of Oahu’s strategic land, air, and sea commands that were crucial to the Pacific War effort.
- **Remember the Sacrifices.** Pearl Harbor serves as a focal point to honor and commemorate the sacrifices made during the Pacific War.
- **Final Resting Place.** Pearl Harbor is the final resting place of hundreds of crew members of the USS *Arizona* and USS *Utah* who made the ultimate sacrifice in the greatest loss of life during a single event in US Naval history. The National Park Service and the US Navy continue to honor WWII veterans through ceremonial and stewardship activities.
- **Portal to the Pacific War Story.** World War II Valor in the Pacific National Monument, Pearl Harbor serves as a portal to the Pacific War story, from its epic land, air, and sea battles to the violations of human rights and the long-lasting impacts of the war.
- **Enduring Peace.** The meaningful setting of Pearl Harbor provides unique opportunities for reconciliation among former Pacific War combatants. The memorials serve as icons of enduring peace and reminders of the healing that is still ongoing.



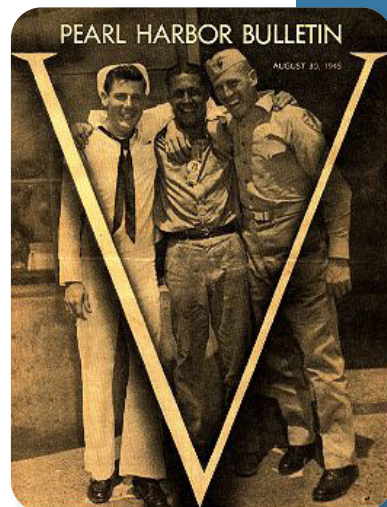
## Fundamental Resources and Values

Fundamental resources and values (FRVs) are those features, systems, processes, experiences, stories, scenes, sounds, smells, or other attributes determined to warrant primary consideration during planning and management processes because they are essential to achieving the purpose of the park and maintaining its significance. Fundamental resources and values are closely related to a park's legislative purpose and are more specific than significance statements.

Fundamental resources and values help focus planning and management efforts on what is truly significant about the park. One of the most important responsibilities of NPS managers is to ensure the conservation and public enjoyment of those qualities that are essential (fundamental) to achieving the purpose of the park and maintaining its significance. If fundamental resources and values are allowed to deteriorate, the park purpose and/or significance could be jeopardized.

The following fundamental resources and values have been identified for World War II Valor in the Pacific National Monument, Pearl Harbor:

- **Historic Structures of Battleship Row.** The shipwrecks; submerged resources; mooring quays F6 North and South, F7 North and South, and F8 North and South; the six Chief Petty Officer Bungalows; and other historic and archeological sites are tangible features of Battleship Row and the Pearl Harbor environs.
- **The USS *Arizona*, the USS *Utah*, and the USS *Oklahoma* Memorials.** The memorials provide opportunities for people to commemorate, remember, and understand the events and sacrifices of December 7, 1941, and the Pacific War.
- **Physical Record.** The original objects, records, manuscripts, photos, and oral histories that document the events of the Pacific War, including the buildup to war and its aftermath.
- **Knowledge and Understanding of the Pacific War during WWII.** The first-hand narratives from those who lived the story; evidence of the social, political, and economic impacts of the war; and ongoing research conducted at the monument contribute to site stewardship, protection of resources, and communicating the story.
- **Ability to Reach People with an Authentic and Relevant Story of the Pacific War.** World War II Valor in the Pacific National Monument, Pearl Harbor is an internationally recognized, accessible, and highly visited site that reaches many people through its exhibits, commemorative and ceremonial events, public programs, and guided boat tours to the USS *Arizona* Memorial.
- **Sense of Place.** Physical access to the Pearl Harbor National Historic Landmark landscape, artifacts, and remnants of the war inspire visitors to form their own meaningful connections with the Pacific War story and the sacrifices that were made.



## Interpretive Themes

Interpretive themes are often described as the key stories or concepts that visitors should understand after visiting a park—they define the most important ideas or concepts communicated to visitors about a park unit. Themes are derived from, and should reflect, park purpose, significance, resources, and values. The set of interpretive themes is complete when it provides the structure necessary for park staff to develop opportunities for visitors to explore and relate to all park significance statements and fundamental resources and values.

Interpretive themes are an organizational tool that reveal and clarify meaning, concepts, contexts, and values represented by park resources. Sound themes are accurate and reflect current scholarship and science. They encourage exploration of the context in which events or natural processes occurred and the effects of those events and processes. Interpretive themes go beyond a mere description of the event or process to foster multiple opportunities to experience and consider the park and its resources. These themes help explain why a park story is relevant to people who may otherwise be unaware of connections they have to an event, time, or place associated with the park.

The following interpretive themes have been identified for World War II Valor in the Pacific National Monument, Pearl Harbor:

- The diverse and complex impacts of World War II on the people of the Pacific shaped and transformed ways of life.
- The memorials constitute places of remembrance and contemplation of the nature of war and the sacrifices of those who lost their lives during the Pacific War.
- The devastating surprise attack on Oahu compelled the United States into an unprecedented world conflict no one was quite ready for, galvanizing all sides for a long, cruel war.
- The war in the Pacific challenged the resolve, ingenuity, and moral compass of every citizen and soldier. The events deeply changed the world socially, geopolitically, environmentally, and militarily.
- Emerging from the destruction of the war, the world is still struggling to find new meanings of trust, respect, and peace for the future.



## Part 2: Dynamic Components

The dynamic components of a foundation document include special mandates and administrative commitments and an assessment of planning and data needs. These components are dynamic because they will change over time. New special mandates can be established and new administrative commitments made. As conditions and trends of fundamental resources and values change over time, the analysis of planning and data needs will need to be revisited and revised, along with key issues. Therefore, this part of the foundation document will be updated accordingly.

### Special Mandates and Administrative Commitments

Many management decisions for a park unit are directed or influenced by special mandates and administrative commitments with other federal agencies, state and local governments, utility companies, partnering organizations, and other entities. Special mandates are requirements specific to a park that must be fulfilled. Mandates can be expressed in enabling legislation, in separate legislation following the establishment of the park, or through a judicial process. They may expand on park purpose or introduce elements unrelated to the purpose of the park. Administrative commitments are, in general, agreements that have been reached through formal, documented processes, often through memorandums of agreement. Examples include easements, rights-of-way, arrangements for emergency service responses, etc. Special mandates and administrative commitments can support, in many cases, a network of partnerships that help fulfill the objectives of the park and facilitate working relationships with other organizations. They are an essential component of managing and planning for World War II Valor in the Pacific National Monument, Pearl Harbor.

#### Special Mandates

*National Defense Authorization Act for Fiscal Year 2006, Section 1017. Establishment of the USS Oklahoma Memorial and Other Memorials at Pearl Harbor, Public Law 109-163*

- **Administration of Memorials.** Once established, the Secretary of the Interior shall administer the USS *Oklahoma* Memorial as a part of the USS *Arizona* Memorial, a unit of the national park system, in accordance with the laws and regulations applicable to land administered by the National Park Service and any agreement between the Secretary of the Interior and the Secretary of the Navy. The Secretary of the Navy shall retain administrative jurisdiction over the land where the USS *Oklahoma* Memorial is established.
- **Requirements for the Memorials at Pearl Harbor.** The site selection, design, and construction of the USS *Oklahoma* Memorial and any memorials established after the date of the enactment of this act that are associated with the attack at Pearl Harbor on December 7, 1941, shall be consistent with the requirements in the document titled “Pearl Harbor Naval Complex Design Guidelines and Evaluation Criteria for Memorials,” dated April 2005.
- **Establishment and Operation of a Transportation System.** The Secretary of the Interior may establish and operate a transportation system over roads linking the USS *Arizona* Memorial visitor center complex with one or more of the existing and future historic sites and historic visitor attractions within the Pearl Harbor Naval Complex, including Ford Island. Transportation on this system may be provided with or without charge, directly or through a contract or concessioner, and without regard to whether service is provided to sites or attractions that are under the jurisdiction of or administered by the National Park Service.

*Establishment of World War II Valor in the Pacific National Monument, December 5, 2008  
(Presidential Proclamation No. 8327)*

- **USS *Arizona* and USS *Utah* Vessels.** Presidential Proclamation 8327 states that the USS *Arizona* and USS *Utah* vessels will not be designated as part of the national monument, but instead will be retained by the Department of Defense (through the Department of Navy) as the final resting place for those entombed there.
- **Partnerships.** Presidential Proclamation 8327 authorizes and directs the Secretary of the Interior to interpret the broader story of World War II in the Pacific in partnership with the Department of Defense, the States of Hawai'i, Alaska, and California, and other governmental and nonprofit organizations.
- **Agreement with the US Navy.** The Department of the Interior through the National Park Service and the Department of Navy may execute an agreement to provide for the operational needs and responsibilities of each Department in implementing this proclamation. The Department of the Defense may retain the authority to control access to those sites.
- **Armed Forces Actions.** The prohibitions required by the proclamation shall not restrict activities and exercises of the Armed Forces (including those carried out by the United States Coast Guard). All activities and exercises of the Armed Forces shall be carried out in a manner that avoids, to the extent practicable and consistent with operational requirements, adverse impacts on national monument resources and qualities. In the event of threatened or actual destruction, loss of, or injury to a national monument resource or quality resulting from an incident, including but not limited to spills and groundings caused by a component of the Department of Defense or any other federal agency, the cognizant component shall promptly coordinate with the Secretary of the Interior for the purpose of taking appropriate actions to respond to and mitigate the harm and, if possible, restore or replace the national monument resource or quality. Nothing in the proclamation or any regulation implementing it shall limit or otherwise affect the Armed Forces' discretion to use, maintain, improve, or manage any real property under the administrative control of a Military Department or otherwise limit the availability of such real property for military mission purposes.

*Department of the Interior, Environment, and Related Agencies Appropriations Act, 2010, Pearl Harbor Naval Complex Joint Ticketing, Public Law 111-88, Sec. 121 (as amended)*

- **Centralized Ticketing Authority.** During the design stage of the Pearl Harbor visitor center, an early idea included the centralized ticketing operations to enhance the experience for visitors to Pearl Harbor. The visitor center was constructed with the specific intent of being a “portal” to Pearl Harbor. This necessarily meant that a single location for visitors to learn about and plan their day was needed (including purchasing general admission tickets). Because the National Park Service does not have authority to allow for “within park” sale of admission to “out-of-park” destinations, a legislative step was taken to provide the National Park Service with the authority to do so. Section 121 of Public Law No. 111-88 (123 Stat. 2930-31) authorizes the Secretary of the Interior to enter into agreements with Pearl Harbor Historic Site partners to facilitate admission to their sites within Joint Base Pearl Harbor-Hickam. A subsequent amendment to Section 121 is found in Section 1733 of Public Law No. 112-10 (125 Stat. 152). This amendment gives the National Park Service the permanent authority to enter into these sort of admission agreements.

## Administrative Commitments

- **Pearl Harbor Historic Sites Partnerships / Ticketing Agreement.** The partnership between the National Park Service and other entities in Pearl Harbor has been established through close working relationships and confirmed through legislation. Section 1017 (d) of Public Law No. 109-163 specifically refers to historic sites and historic visitor attractions in the Pearl Harbor area, without regard to whether the sites are managed by the National Park Service. Section 121 of Public Law No. 111-88 establishes that the Secretary of the Interior may designate a “Pearl Harbor Historic Attraction,” and that they include the Bowfin Submarine Park and Memorial, the Battleship Missouri Memorial, and the Pacific Aviation Museum, Pearl Harbor.

An agreement exists between the National Park Service and the Pearl Harbor Historic Sites to provide for sale of tickets to Pearl Harbor historic attractions from within the Pearl Harbor visitor center, and further allows visitors to those historic attractions to gain access to them by passing through security screening at the visitor center. This agreement has terms and a condition typically found in other agreements and covers a five-year period. The agreement expires on May 1, 2016.

- **Operational Agreement, US Navy Region Hawaii.** World War II Valor in the Pacific National Monument, Pearl Harbor is located almost entirely within the boundary of Joint Base Pearl Harbor-Hickam, an active military installation. As noted above, Presidential Proclamation 8327 states that the National Park Service and the Department of Navy may execute an agreement to provide for the operational needs and responsibilities of each department.

The US Navy and the National Park Services have a five-year, broad operational agreement that provides guidance for security, access (i.e., both public and agency access), law enforcement, utilities, and emergency services. The agreement also specifies cultural resource management services that the National Park Service will provide to the US Navy including management of submerged archeological material features in and on the USS *Arizona* and USS *Utah* shipwrecks, curation and collection of Pacific War artifacts, and development of exhibits for US Navy materials. The agreement expires on November 10, 2016.



## Assessment of Planning and Data Needs

Once the core components of part 1 of the foundation document have been identified, it is important to gather and evaluate existing information about the park's fundamental resources and values, and develop a full assessment of the park's planning and data needs. The assessment of planning and data needs section presents planning issues, the planning projects that will address these issues, and the associated information requirements for planning, such as resource inventories and data collection, including GIS data.

There are three sections in the assessment of planning and data needs:

1. analysis of fundamental resources and values (see appendix C).
2. identification of key issues and associated planning and data needs
3. identification of planning and data needs (including spatial mapping activities or GIS maps)

The analysis of fundamental resources and values and identification of key issues leads up to and supports the identification of planning and data collection needs.

### Analysis of Fundamental Resources and Values

The fundamental resource or value analysis table includes current conditions, potential threats and opportunities, planning and data needs, and selected laws and NPS policies related to management of the identified resource or value. Please see appendix C for the analysis of fundamental resources and values.

### Identification of Key Issues and Associated Planning and Data Needs

This section considers key issues to be addressed in planning and management and therefore takes a broader view over the primary focus of part 1. A key issue focuses on a question that is important for a park. Key issues often raise questions regarding park purpose and significance and fundamental resources and values. For example, a key issue may pertain to the potential for a fundamental resource or value in a park to be detrimentally affected by discretionary management decisions. A key issue may also address crucial questions that are not directly related to purpose and significance, but which still affect them indirectly. Usually, a key issue is one that a future planning effort or data collection needs to address and requires a decision by NPS managers.

The following are key issues for World War II Valor in the Pacific National Monument, Pearl Harbor. Other important issues of concern identified through the foundation process then follow.



- **Ford Island Resource Protection, Access, and Visitor Experience.** With the 2008 presidential proclamation and the addition of sites on Ford Island and Battleship Row, the National Park Service manages a broader array of resources. Previously, the National Park Service only had operational agreements for shared management responsibilities of the USS *Arizona* Memorial and its associated visitor facilities. The US Navy had the primary responsibility for the care and stewardship of cultural resources associated with the attack on Pearl Harbor. Both resource protection and visitor management responsibilities are now spread across a larger geographic area. The monument does not yet have baseline documentation and planning for these cultural resources. Such documentation would inform future use of the facilities, interpretative opportunities, and management needed to maintain their historic integrity.

Cultural resources that the monument gained as a result of the presidential proclamation include the six Chief Petty Officer Bungalows on Ford Island and mooring quays F6 North and South, F7 North and South, F8 North and South, which constituted part of Battleship Row. Visitor opportunities on Ford Island are currently limited by the fact that Ford Island is an active military installation with restricted access. Visitors must use shuttle buses operated by Pearl Harbor Historic Sites partners to access the USS *Utah* and *Oklahoma* Memorials, owned by the National Park Service, and several partner sites such as the USS *Missouri* and the Pacific Aviation Museum. This access can be restricted at the discretion of the US Navy, particularly when security levels are elevated. Visitor experience goals and objectives for resources and facilities on Ford Island have not been established, and NPS interpretation and visitor services are extremely limited.

Some NPS operations at Pearl Harbor have been relocated to leased space in a National Oceanic and Atmospheric Administration (NOAA) building on Ford Island creating more of an NPS presence at this location. A comprehensive look at resource protection, visitor access and experience, and monument operations on Ford Island would provide guidance to address management issues at NPS and other related historic sites on Ford Island.

- *Associated high priority plans and/or data needs include:* Comprehensive management plan for Ford Island memorials and historic structures; historic resources study; historic structures report and treatment plan for the Chief Petty Officer Bungalows and landscape; visitor use data and studies; visitor transportation studies and planning.

- **Visitor Congestion and Crowding.** The monument opened a new visitor center complex in 2010. Since its opening, the monument has experienced a substantial increase in annual visitation, from 1.3 million in 2009 to 1.77 million in 2013. On a daily basis, thousands of visitors move through the site. The National Park Service cannot always meet the demand for visitation, particularly with regard to the USS *Arizona* Memorial visitation and limited parking. Specific times include summer months, cruise ship days, holidays, and spring break. Visitor congestion and circulation conflicts also pose considerable safety issues.

The Pearl Harbor visitor center is the gateway to visitation of all of the Pearl Harbor Historic Sites. The visitor center complex maintains one main security entry point for all site users including over one hundred tour and transportation companies. The main security entrance is often clustered with hundreds of people. Evaluation of visitor use and establishment of strategies to manage congestion and demand would improve visitor experience.

- *Associated high priority plans and/or data needs include:* Strategic interpretive plan, Strategic partnerships evaluation/plan; visitor use management plan; visitor use data and studies; visitor transportation studies and planning; threat vulnerability assessment.

- **Transportation, Circulation, and Security Challenges.** Transportation, traffic flow, and circulation, including vehicles and pedestrians, remain major issues at World War II Valor in the Pacific, Pearl Harbor. Parking lots are usually at capacity, therefore creating an overflow of drivers trying to find parking. This causes major congestion in the parking lots and forces drivers to park off-site and walk a considerable distance to the main entrance. A transportation study currently underway is exploring potential solutions, including an on-site parking structure that would provide increased parking capacity.

Hundreds of commercial vehicles, including taxis, buses and tour vans, travel to the site daily creating additional congestion, motor vehicle accidents, and safety issues. Inadequate parking, roadways, and circulation for commercial vehicles are persistent problems that plague the site. Pedestrian access to existing and planned public transportation is confusing, dangerous, and remains a constant concern due to inadequate infrastructure and signage. Pedestrians frequently walk into the middle of the road not using the existing crosswalks.

The National Park Service has and will continue to pursue public transportation options for getting to World War II Valor in the Pacific National Monument, Pearl Harbor. Several regional transportation projects provide both challenges and opportunities related to visitor access. The City and County of Honolulu has planned a rapid transit system for the island, Honolulu Area Rail Transit. The proposed rail development will follow the major highway near the visitor center, Kamehameha Highway, and will affect the national monument. The rail line is scheduled to be completed by early 2020 with connections between downtown Honolulu and West Oahu. The impact of this transportation mode on monument operations is unknown at this time, but is expected to present both challenges and opportunities to the current manner in which the Pearl Harbor visitor center is operated. Planning and capital investment are needed to ensure that safe visitor access from the proposed rapid transit stations near World War II Valor in the Pacific National Monument, Pearl Harbor will be provided. Another opportunity is the Pearl Harbor bike path for which planning is currently underway.

US Navy security mandates restrict bags, purses, and other personal items from being brought into the visitor center complex. This operating procedure could be reevaluated as it is shown that car break-ins persist in the parking lots. Visitors often leave valuable items in their cars due to the restriction, leaving them vulnerable to an unauthorized entry into a motor vehicle.

- *Associated high priority plans and/or data needs include:* Strategic interpretive plan, Strategic partnerships evaluation/plan; visitor use management plan; visitor use data and studies; visitor transportation studies and planning; threat vulnerability assessment.



- **Changing Interpretation and Education Needs.** Changing demographics and the expanded interpretive mandate of the 2008 presidential proclamation have broadened the interpretive themes that the monument is expected to address. In response to the 2008 presidential proclamation, the monument expanded their programming and staffing through the Division of Interpretation and is seeking to broaden its interpretive programming to include not just the December 7 attack at Pearl Harbor, but the duration and expanse of the Pacific War. There are also opportunities to coordinate planning with other Pacific War national parks such as War in the Pacific National Historical Park in Guam and American Memorial Park in Saipan.

Different interpretive messaging and educational programming are needed to tell the broader Pacific War story in a way that continues to be relevant to a wide range of visitors. As time passes, a decreasing percentage of visitors have personal memories or direct connections to the events of World War II. The increasing number of visitors from countries throughout Asia means that visitors arrive with vastly different perspectives on World War II. Both of these shifts will affect future interpretive needs. The monument will need to evaluate how to continue to share the stories of the Pacific War when there are no living World War II survivors. To continue to ensure a high-quality visitor experience and to stay relevant, the monument will need to continue to update exhibits, special events, multimedia, social media, ranger-led programs, etc. Additionally, the high volume and concentration of visitors at World War II Valor in the Pacific National Monument, Pearl Harbor is a primary factor in the determination of appropriate visitor services and interpretive messaging.

The recently established Pearl Harbor institute will enhance the educational services of the National Park Service and its many partners by providing adults with expanded educational services related to the Pacific War. The Pearl Harbor institute is using the model of park affiliated institutes present elsewhere in the national park system. The institute is currently part of Pacific Historic Parks and is intended to operate in a self-sustaining manner within five years.

The ParkEd Program at the monument (an NPS education program) continues to deliver place-based learning through educational experiences with a primary focus on 5th and 10th grade students. This program has grown from reaching 30,000 students in 2011 to reaching more than 55,000 students in 2014. This growth is a result of increased professionalism, program focus, and tremendous support from Pacific Historic Parks, both financial staffing. The combination of the Pearl Harbor institute and the ParkEd Program will have an impact on the integration between all of the Pearl Harbor venues, as well as the manner in which high-quality educational experiences are delivered to visitors.

- *Associated high priority plans and/or data needs include:* Business plan; comprehensive management plan for Ford Island memorials and historic structures; historic resources study; oral history plan; strategic interpretive plan; strategic partnerships evaluation/plan; visitor use management plan; visitor use data and studies.



- **Operational Challenges as a Result of the New Visitor Center Complex and Expanded Mandates.** The expanded monument mandates, the new visitor center complex with its high-tech facilities, increased visitation, and shifting budgets have created operational challenges for the monument. Staffing needs and required expertise have changed while shifting budgets have constrained hiring flexibility. Operational space for offices, collections storage, and maintenance work are inadequate and current solutions are temporary in nature (e.g., lease of space in the Ford Island NOAA building).

Maintenance demands have increased from more visitors, the addition of historic structures such as the Chief Petty Officer Bungalows, and continued maintenance of complex technical systems and exhibits associated with the new visitor center. As warranties expire, the National Park Service will assume more maintenance responsibility for the technical systems (i.e., heating, ventilation, and air-conditioning; audio visual; etc.). Some exhibits are no longer functioning and the increased visitation has caused more wear and tear on the visitor facilities.

As a result of the visitor center improvements and the expanded monument mandate which includes sites on Ford Island, the monument has significant management requirements related to commercial service operations. Commercial service operations currently play an important role in providing transportation services for visitors.

Opportunities exist to leverage additional funding for monument operations. This could include direct donations, improved fee collections, and assistance from monument partners in maintenance needs and site management.

- *Associated high priority plans and/or data needs include:* Business plan; NPS operational space reallocation analysis; strategic partnerships evaluation/plan; workforce management plan.

- **Collections Management including Oral History Archive.** From the establishment of the USS *Arizona* Memorial as a museum/shrine by Congress, the monument has not had a long-term collections management facility and these resources are fundamental to park purpose and significance. In addition, the opportunities to collect oral histories from survivors of the attack on Pearl Harbor and other World War II veterans are rapidly diminishing, given the age of World War II survivors and veterans. Existing oral histories are not easily accessible to researchers and the public would benefit from the establishment of protocols for such use. Some of these materials are stored off-site in partner facilities making access more problematic.



## Other Important Issues

In addition to the key issues described above, several other important issues were identified.

- **Emergency Response and Visitor Safety.** With so many visitors concentrated in a small area, monument staff must be prepared to address a range of emergency situations. A comprehensive review of safety issues, staff training needs, and emergency response scenarios could help the National Park Service be better prepared in the event of a major emergency.
- **Physical Security.** Development, direction, coordination, compliance, and implementation of the NPS Physical Security Program, including the evaluation of the bag policy and storage, is imperative for protecting the visiting public, staff, and volunteers.

The safety of the employees, volunteers, and visitors remains a focus of physical security planning and implementation. Of utmost importance are the protection and preservation of the resources (i.e., memorial, facilities, exhibits, etc.). Since the completion of the new visitor center there has not been a threat vulnerability assessment completed and one should be done to serve the safety and security of all persons who come to the site.

- **Climate Change.** Given the monument's location at Pearl Harbor, climate change impacts could have a significant effect on monument resources and visitor facilities. Scenario planning could assist the monument in planning for rising sea levels.
- **Memorial Maintenance.** The three memorial structures have ongoing maintenance needs that have not been fully addressed through data gathering and cultural resource assessment and planning. For example, several components of the USS *Arizona* Memorial require attention including the dock and ramp, surface conditions, and marble. Structural evaluation of the USS *Arizona* Memorial bridge and mooring quay concrete is also necessary.
- **US Navy Partnership and Coordination.** The national monument is located almost entirely within the boundary of Joint Base Pearl Harbor-Hickam, an active military installation with significant strategic and operational value to US national defense. Coordination of almost all aspects of monument operations requires continuous communication with Navy leadership and staff.

## Planning and Data Needs

To maintain connection to the core elements of the foundation and the importance of these core foundation elements, the planning and data needs listed here are directly related to protecting fundamental resources and values, park significance, and park purpose, as well as addressing key issues. To successfully undertake a planning effort, information from sources such as inventories, studies, research activities, and analyses may be required to provide adequate knowledge of park resources and visitor information. Such information sources have been identified as data needs. Geospatial mapping tasks and products are included in data needs.

Items considered of the utmost importance were identified as high priority, and other items identified, but not rising to the level of high priority, were listed as either medium- or low-priority needs. These priorities inform park management efforts to secure funding and support for planning projects.

## Criteria and Considerations for Prioritization.

The following criteria were used to evaluate the priority of each planning or data need:

- Ability of the plan to address multiple, or interrelated issues. For example, many visitor capacity issues are interrelated with resource protection issues.
- Emergency/urgency of the issue.
- Prevention of resource degradation. Consideration of protection of the fundamental resources or values.
- Ability to impact visitor use and experience.
- Funding availability for the planning effort, study, or data collection.
- Feasibility of completing the plan or study.
- Opportunities, including interagency partnership or assistance.

## High Priority Planning Needs

### Workforce Management Plan.

*Rationale, scope, and sequencing* — A workforce management plan was identified as the highest priority planning need for World War II Valor in the Pacific National Monument, Pearl Harbor. Expanded resources as a result of the 2008 monument designation; increased visitation associated with the completion of the new visitor center complex in 2010; and new facilities, which include new sustainable building technologies and state-of-the-art exhibits have created additional demands for monument staffing and expertise.

The workforce management plan would include an evaluation of current staffing capacity, review of existing operations, and an assessment of staffing priorities to address the significant changes in visitor use, facility, and resource management, particularly in light of shifting budget priorities. Law enforcement and medical response needs to support current levels of visitation would also be evaluated. The workforce management plan would also provide recommendations for an organization that aligns with the current operational environment. Goals, opportunities, and recommendations for organizational development would be identified. Opportunities to engage partners in more areas of visitor use and facilities management would be explored.

The need for a workforce management plan is immediate. No additional information gathering or data needs are required to start this process. However, evaluation of staffing needs would inform planning for future operational space requirements.

### Business Plan.

*Rationale, scope, and sequencing* — Declining budgets affect World War II Valor in the Pacific National Monument, Pearl Harbor staffing and operations. A business plan would provide a synopsis of the monument’s funding history; present a detailed picture of the state of current monument operations and funding; and outline priorities and funding strategies. Consideration of partnership opportunities would be an important component of developing the business plan. The business plan would serve as a communication tool and provide the monument with financial and operational baseline knowledge for future decision making.

### Visitor Use Management Plan.

*Rationale, scope, and sequencing* — World War II Valor in the Pacific National Monument, Pearl Harbor’s annual visitation has increased by 500,000 since the completion of the new visitor center complex. High volumes of visitors move through the site on a daily basis creating long wait times for tickets, crowding, and circulation conflicts. Demand to visit the USS *Arizona* Memorial exceeds current capacity during peak visitation periods.

A visitor use management plan would evaluate current visitor use patterns and characteristics, identify visitor use management goals and objectives, identify indicators and standards that define acceptable levels of use, and specify appropriate visitor use management strategies (e.g., timing of visitation to minimize crowding, management of entrance lines, reservation systems and ticketing, commercial services for transportation, and visitor circulation between venues). A signage plan could be a component of the visitor use management plan. Appropriate, well-located signage could assist in managing the high volume of visitors.

Evaluation of visitor use patterns would be needed to inform the development of visitor use management indicators and standards.

### Strategic Partnerships Evaluation/Plan.

*Rationale, scope, and sequencing* — The 2008 presidential proclamation establishing the monument identified partners who will work with the National Park Service to achieve the mission of the national monument. Subsequent legislation authorized the National Park Service to work with these partners for centralizing ticketing in Pearl Harbor, and defined them as the Pearl Harbor Historic Site partners. The Pearl Harbor visitor center operations rely heavily on these partners. Likewise, the partners rely on the National Park Service for visitor access to partner run Pearl Harbor Historic Sites. These relationships have developed over a number of years and will continue to become more integrated.

This plan will evaluate the potential of maximizing partnerships to assist with monument operations and maintenance. Additional partners may be identified to assist the monument in accomplishing its mission and would be included in the strategy.

### Comprehensive Management Plan for Ford Island Memorials and Historic Structures (NPS and partner sites).

*Rationale, scope, and sequencing* — The 2008 presidential proclamation transferred to the National Park Service historic properties associated with the December 7, 1941, attack on Pearl Harbor. This included properties on Ford Island such as the six Chief Petty Officer Bungalows, the USS *Oklahoma* Memorial, and the USS *Utah* Memorial. As an active military base, access to Ford Island is restricted. Most visitors can only access the historic site via a shuttle bus.

The comprehensive management plan for Ford Island sites and structures would address protection and planned uses of historic properties, goals for visitor access and experience, and potential use of facilities on Ford Island for monument operations. This plan would address the overall visitor experience on Ford Island including properties managed by the US Navy and partner organizations that commemorate War in the Pacific (e.g., Pacific Aviation Museum, Battleship *Missouri* Memorial, and USS *Bowfin*). Security levels on Ford Island would be a primary factor in the consideration of visitor opportunities and monument operations.

The Ford Island comprehensive management plan would benefit from the completion of a historic structures report for the Chief Petty Officer Bungalows and a broader historic resource study of Pearl Harbor including Ford Island. US Navy participation and partner and public involvement would be important components of the planning process.



### **Oral History Plan.**

*Rationale, scope, and sequencing* — Survivors of World War II are decreasing in numbers. It is important to document their oral histories so that these firsthand accounts can be related to future generations. Previous efforts to collect oral histories have focused on Pearl Harbor survivors and Pacific War veterans and witnesses who could shed light and inform specific interpretation needs—in particular for the development of exhibits associated with the new Pearl Harbor visitor center. Additional interviews were conducted driven by anniversary events and in an opportunistic manner. An oral history plan would evaluate existing oral histories collected by the National Park Service and others, set priorities for collection of additional oral histories, and identify management strategies to better organize and provide access to collections for researchers. The National Park Service would coordinate with partner organizations to evaluate other oral histories as a means of identifying priorities (e.g., University of Hawai‘i has collected oral histories on the effect of the war on Hawai‘i).

### **Interpretive Strategic Plan (five-year work plan).**

*Rationale, scope, and sequencing* — World War II Valor in the Pacific National Monument, Pearl Harbor is in need of technical guidance for interpretive and educational programs at the monument. In response to the 2008 presidential proclamation, the monument is in the process of broadening its interpretive programming to include not just the events at Pearl Harbor but the duration of the Pacific War. To continue to ensure a high-quality visitor experience the monument requires guidance to continue updates of exhibits, special events, multimedia, social media, ranger-led programs, etc.

An interpretive strategic plan would provide overall guidance for the next five years. A five-year plan would give the monument the greatest management flexibility. The interpretive strategic plan would define interpretive themes, establish goals and guidance for educational programs, identify audiences, and specify appropriate methods of delivery for interpretive messages.

Strategic interpretive planning should be coordinated with monument partners and other national park units that tell the story of the Pacific War, particularly War in the Pacific National Historical Park and American Memorial Park.



## High Priority Data Needs

- **Bridge Inspection for USS *Arizona* Memorial.** The structural integrity of the bridge that supports the USS *Arizona* Memorial needs evaluation.
- **Historic Resource Study.** A historic resource study would provide a historical overview of World War II Valor in the Pacific National Monument (Pearl Harbor and Ford Island) and identify and evaluate the monument's cultural resources within each historic context. It would synthesize available cultural resource information from all disciplines in a narrative that would inform managers, planners, interpreters, cultural resource specialists, and the public as a reference for the history of the region and the resources within the monument. A historic resource study would help set priorities for cultural resource management and ensure that the various cultural aspects of the monument are all being represented in decision-making efforts.
- **Historic Structures Report and Treatment Plan for the Chief Petty Officer Bungalows and Landscape.** The 2008 presidential proclamation transferred the maintenance and preservation responsibilities for six historic Chief Petty Officer Bungalows on Ford Island to the National Park Service. The bungalows are currently stabilized and in poor condition. Treatment measures need to be determined to prevent further degradation of the structures. A historic structures report for the bungalows would guide NPS management in terms of potential use and maintenance needs. The historic structures report could also inform the pending value analysis process for the bungalows.
- **NPS Operational Space Reallocation Analysis.** World War II Valor in the Pacific National Monument, Pearl Harbor is currently in the process of transitioning its collections and office space to the NOAA building on Ford Island. The move to the NOAA building will impact the monument's operating base and is not a permanent solution to NPS operational needs. An evaluation of space needs and analysis of potential reallocation would identify opportunities to use existing facilities and operational space more efficiently and would outline options for unmet needs.
- **Threat Vulnerability Assessment.** Since the completion of the new visitor center there has not been a threat vulnerability assessment completed and one should be done to serve the safety and security of all persons that may come to the site. A threat vulnerability assessment is an assessment of threats the site may experience and what vulnerabilities to these threats exist.
- **Visitor Use Data and Studies.** Greater understanding of monument visitation patterns is needed for planning decisions, visitor use management, and interpretive and educational programming. Visitor use data will feed into high-priority planning efforts including the comprehensive management plan for Ford Island sites and structures and the visitor use management plan.
- **Visitor Transportation Studies and Planning.** The monument is currently conducting studies to address issues related to transportation and circulation. Such issues include parking capacity, confusing and dangerous pedestrian and public transportation access, and tour bus and taxi drop-off conflicts. The Federal Highway Administration is providing assistance on two separate transportation studies, a parking and traffic study and an alternative transportation study. The monument has also established a taxi committee to address congestion caused by trolling taxis. Phase II of the studies will offer solutions that the monument could pursue in-house or through contracts.

See appendix D for recently completed and ongoing management activities and planning and data collection efforts that address key park issues.

### Summary of High Priority and Other Planning and Data Needs

Planning or Data Need	Priority Level
Resource Management	
Plans	
Comprehensive management plan for Ford Island memorials and historic structures (NPS and partner sites)	H
Oral history plan	H
Housekeeping plan	M
Integrated pest management plan	M
Resource stewardship strategy	M
Data Needs and Studies	
Bridge inspection for USS <i>Arizona</i> memorial	H
Historic resource study	H
Historic structures report and treatment plan (Chief Petty Officer Bungalows and landscape)	H
Historic structures report and treatment plan (USS <i>Arizona</i> Memorial and mooring quays)	M
Administrative history	M
Cultural landscape inventory	M
Cultural resources base map	M
Ethnographic overview	M
Update National Register of Historic Places documentation and determinations of eligibility	M
Visitor Experience	
Plans	
Interpretive strategic plan (five-year work plan)	H
Visitor use management plan	H
Signage plan	L
Data Needs and Studies	
Visitor use data and studies	H
Facilities and Operations	
Plans	
Business Plan	H
Strategic partnerships evaluation/plan	H
Workforce management plan	H
Plan for partners to share baseline operational needs	M
Sea level rise vulnerability assessment and plan	M
Commercial services plan/strategy	M
Data Needs and Studies	
NPS operational space reallocation analysis	H
Threat vulnerability assessment	H
Total cost of facility ownership study	M
Validate names, rank, etc. for USS <i>Arizona</i> Memorial wall	M
Post-occupancy review for new facilities	M

## Part 3: Contributors

### World War II Valor in the Pacific National Monument, Pearl Harbor

Patty Brown, Chief of Business Services and Administration  
Robert Burk, Former Commercial Services Specialist  
Amanda Carona, Former Historian  
Christine Carr, Former Administrative Systems Technician/Park Dive Officer  
Paul DePrey, Superintendent  
Candace Francis, Former Park Guide  
Michael Leon, Former Park Ranger  
Daniel Martinez, Historian  
Eileen Martinez, Former Chief of Interpretation  
Frank Middleton, Education Specialist  
Scott Pawlowski, Chief of Cultural Resource  
Merry Petrossian, Former Chief of Maintenance  
Dave Stransky, Chief Park Ranger  
Daniel Warner, Former Park Ranger

### Pacific West Region

Barbara Butler Baunsgard, Landscape Architect  
Martha Crusius, Program Chief, Park Planning and Environmental Compliance  
Frank Hays, Former Pacific Area Director  
Cari Kreshak, Former Pacific Islands Cultural Resources Manager  
Meredith Speicher, Outdoor Recreation Planner

### Other NPS Staff

Barbara Alberti, Former Superintendent, War in the Pacific National Historical Park  
Rose Manibusan, Chief of Interpretation, War in the Pacific National Historical Park  
James Oelke, Former Park Ranger, War in the Pacific National Historical Park  
Steve Haller, Historian, Golden Gate National Recreation Area  
Stephan Nofield, Former Senior Planner, Denver Service Center  
Morgan Elmer, Project Manager, Denver Service Center - Planning  
John Paul Jones, Visual Information Specialist, Denver Service Center - Planning  
Leslie Peterson, Project Specialist, Denver Service Center - Planning  
Larry Murphy, Archeologist (retired NPS Submerged Resources Center)

### Partners

Edean Saito, Pacific Historic Parks Business Manager  
Stan Melman, Pacific Historic Parks Museum Technician

### Others

James Michael Wenger, Historian, Pearl Harbor History Associates

## Appendixes

### Appendix A: Executive Order and Legislative Acts for World War II Valor in the Pacific National Monument, Pearl Harbor

#### Legislative Background

Prior to the 2008 presidential proclamation establishing World War II in the Pacific National Monument, there was no enabling legislation or presidential proclamation for the NPS management of the USS *Arizona* Memorial. In 1980, the National Park Service gained stewardship of the USS *Arizona* Memorial through a formal agreement between the US Navy and the National Park Service. The following summary describes the legislation that established the USS *Arizona* Memorial and other memorials that are now managed by the National Park Service as part of World War II Valor in the Pacific National Monument, Pearl Harbor.

#### AN ACT TO AUTHORIZE CONSTRUCTION OF A UNITED STATES SHIP ARIZONA MEMORIAL AT PEARL HARBOR, MARCH 15, 1958 (PL 85-344) (72 STAT. 36)

Public Law 85-344

March 15, 1958  
[H. R. 5809]

AN ACT

To authorize construction of a United States Ship Arizona Memorial at Pearl Harbor.

Memorial; Pearl Harbor.

*Be it enacted by the Senate and House of Representatives of the United States of America in Congress assembled, That the Secretary of the Navy may—*

- (1) accept contributions for the construction of a memorial and museum to be located on the hulk of the United States ship Arizona or adjacent United States property in Pearl Harbor, Territory of Hawaii;
- (2) authorize Navy activities to furnish material to the Pacific War Memorial Commission for use in national promotion of a public subscription campaign to raise funds for a United States Ship Arizona Memorial;
- (3) authorize Navy activities to assist in conceiving a design and in determining the construction cost for the memorial;
- (4) undertake construction of the memorial and museum when sufficient funds have been subscribed for completion of the structure; and
- (5) provide for maintenance of the memorial and museum when completed.

Approved March 15, 1958.

**AN ACT TO AUTHORIZE THE APPROPRIATION OF \$150,000 FOR USE TOWARD THE CONSTRUCTION OF A UNITED STATES PACIFIC WAR MEMORIAL, SEPTEMBER 6, 1961 (PL 87-201) (75 STAT. 470)**

September 6, 1961  
[H. R. 44]

AN ACT

To authorize the appropriation of \$150,000 for use toward the construction of a United States Pacific War Memorial.

U. S. Pacific War Memorial. Pearl Harbor.

*Be it enacted by the Senate and House of Representatives of the United States of America in Congress assembled, That the Act entitled "An Act to authorize construction of a United States Ship Arizona Memorial at Pearl Harbor", approved March 15, 1958 (Public Law 85-344; 72 Stat. 36), is hereby amended by adding at the end thereof the following:*

Appropriation.

"SEC. 2. There is hereby authorized to be appropriated to the Secretary of the Navy, for use toward the construction of such memorial and museum, the sum of \$150,000.

"SEC. 3. Such memorial and museum shall be maintained in honor and in commemoration of the members of the Armed Forces of the United States who gave their lives to their country during the attack on Pearl Harbor, Hawaii, on December 7, 1941."

Approved September 6, 1961.

**MILITARY CONSTRUCTION AUTHORIZATION ACT, 1978. HOUSE OF REPRESENTATIVES 95TH CONGRESS, 1ST SESSION, REPORT NO. 95-494, JULY 12, 1977**

**HOUSE OF REPRESENTATIVES 95TH CONGRESS**

1st Session

REPORT No. 95-494 MILITARY CONSTRUCTION AUTHORIZATION ACT. 1978 July 12. 19ii.-Ordered to be printed

Mr. NEDZI, from the committee of conference, submitted the following

**CONFERENCE REPORT**

[To accompany S. 14741]

**PEARL HARBOR NAVAL STATION. HAWAII-ARIZONA MEMORIAL**

In its bill, the Senate added 53.3 million for visitor facilities at the ARIZONA Memorial. Pearl Harbor, Hawaii. House conferees expressed reservations about providing authority under the Military Construction Authorization Act for the construction of memorial facilities and questioned the scope of the proposed project. The House conferees were of the opinion that \$2.0 million should be sufficient to provide suitable facilities for the memorial. After a thorough review of the history of this project, the conferees agreed to authorize \$2.0 million.

Further, the conferees agreed that prior to the award of any construction contract for the proposed ARIZONA memorial facilities, an agreement must be executed between the Navy and the National Park Service providing that the National Park Service will assume the responsibility for the operation of the memorial upon completion of such facilities.

**ESTABLISHMENT OF THE USS OKLAHOMA MEMORIAL AND OTHER MEMORIALS AT PEARL HARBOR, JANUARY 6, 2006 (PL 109-163) (109 STAT. 1017)**

**SEC. 1017. ESTABLISHMENT OF THE USS OKLAHOMA MEMORIAL AND OTHER MEMORIALS AT PEARL HARBOR.**

Hawaii.  
16 USC 431 note.

(a) **ESTABLISHMENT OF THE USS OKLAHOMA MEMORIAL.**—Not later than 90 days after the date of the enactment of this Act, the Secretary of the Navy, in consultation with the Secretary of the Interior, shall identify an appropriate site on Ford Island, Hawaii, for a memorial for the U.S.S. Oklahoma (BB-37). The Secretary of the Interior shall establish the memorial at the identified site by authorizing the USS Oklahoma Memorial Foundation to construct a memorial. The Secretary shall certify that—

Deadline.

- (1) the USS Oklahoma Memorial Foundation has sufficient funding to complete construction of the memorial; and
- (2) the memorial meets the requirements of subsection (c).

Certification.

(b) **ADMINISTRATION OF THE MEMORIAL.**—Once established, the Secretary of the Interior shall administer the USS Oklahoma Memorial as a part of the USS Arizona Memorial, a unit of the National Park System, in accordance with the laws and regulations applicable to land administered by the National Park Service and any agreement between the Secretary of the Interior and the Secretary of the Navy. The Secretary of the Navy shall retain administrative jurisdiction over the land where the USS Oklahoma Memorial is established.

(c) **REQUIREMENTS FOR PEARL HARBOR MEMORIALS.**—The site selection, design, and construction of the USS Oklahoma Memorial and any memorials established after the date of the enactment of this Act that are associated with the attack at Pearl Harbor on December 7, 1941, shall be consistent with the requirements in the document titled “Pearl Harbor Naval Complex Design Guidelines and Evaluation Criteria for Memorials”, dated April 2005.

(d) **ESTABLISHMENT AND OPERATION OF TRANSPORTATION SYSTEM.**—The Secretary of the Interior may establish and operate a transportation system over roads linking the USS Arizona Memorial Visitor Center with one or more of the existing and future historic sites and historic visitor attractions within the Pearl Harbor Naval Complex, including Ford Island. Transportation on this system may be provided with or without charge, directly or through a contract or concessioner, and without regard to whether service is provided to sites or attractions that are under the jurisdiction of or administered by the National Park Service.

**SEC. 1018. AUTHORITY TO USE NATIONAL DEFENSE SEALIFT FUND TO PURCHASE CERTAIN MARITIME PREPOSITIONING SHIPS CURRENTLY UNDER CHARTER TO THE NAVY.**

(a) **FISCAL YEAR 2006 LIMITATION.**—The authority provided by subsection (c)(1) of section 2218 of title 10, United States Code, may not be used for the purchase of more than six vessels described in subsection (c) using funds appropriated to the National Defense Sealift Fund for fiscal year 2006.

(b) **AUTHORITY.**—The Secretary of Defense may purchase any vessel described in subsection (c) through the use of the authority in subsection (c)(1) of section 2218 of title 10, United States Code, without regard to the limitation in subsection (f)(1) of that section.

(c) **COVERED VESSELS.**—Subsections (a) and (b) apply with respect to any vessel that as of the date of the enactment of this Act—

- (1) is chartered by the Department of Defense under a 25-year lease; and
- (2) is used by the Navy as a maritime prepositioning ship.

(d) **TECHNICAL AMENDMENTS TO UPDATE STATUTE.**—Section 2218(f)(1) of title 10, United States Code, is amended—

- (1) by striking “Not more than a total of five vessels built in foreign ship yards may be” and inserting “A vessel built in a foreign ship yard may not be”; and
- (2) by inserting before the period at the end the following: “, unless specifically authorized by law”.

## ESTABLISHMENT OF THE WORLD WAR II VALOR IN THE PACIFIC NATIONAL MONUMENT, DECEMBER 5, 2008 (PRESIDENTIAL PROCLAMATION NO. 8327)

**By the President of the United States of America**

### **A Proclamation**

Beginning at Pearl Harbor with the day of infamy that saw the sinking of the USS ARIZONA and ending on the deck of the USS MISSOURI in Tokyo Bay, many of the key battles of World War II were waged on and near American shores and throughout the Pacific. We must always remember the debt we owe to the members of the Greatest Generation for our liberty. Their gift is an enduring peace that transformed enemies into steadfast allies in the cause of democracy and freedom around the globe.

Americans will never forget the harrowing sacrifices made in the Pacific by soldiers and civilians that began at dawn on December 7, 1941, at Pearl Harbor on the island of Oahu. The surprise attack killed more than 2,000 American military personnel and dozens of civilians and thrust the United States fully into World War II.

America responded and mobilized our forces to fight side-by-side with our allies in the European, Atlantic, and Pacific theaters. The United States Navy engaged in epic sea battles, such as Midway, and our Armed Forces fought extraordinary land battles for the possession of occupied islands. These battles led to significant loss of life for both sides, as well as for the island's native peoples. Battlegrounds such as Guadalcanal, Tarawa, Saipan, Guam, Peleliu, the Philippines, Iwo Jima, and Okinawa are remembered for the heroic sacrifices and valor displayed there.

The conflict raged as far north as the Alaskan territory. The United States ultimately won the encounter in the Aleutian Island chain but not without protracted and costly battles.

There were also sacrifices on the home front. Tens of millions of Americans rallied to support the war effort, often at great personal cost. Men and women of all backgrounds were called upon as industrial workers, volunteers, and civil servants. Many Americans valiantly supported the war effort even as they struggled for their own civil rights.

In commemoration of this pivotal period in our Nation's history, the World War II Valor in the Pacific National Monument adds nine historic sites to our national heritage of monuments and memorials representing various aspects of the war in the Pacific.

Five of those sites are in the Pearl Harbor area, which is the home of both the USS ARIZONA and the USS MISSOURI—milestones of the Pacific campaign that mark the beginning and the end of the war. The sites in this area include: the USS ARIZONA Memorial and Visitor Center, the USS UTAH Memorial, the USS OKLAHOMA Memorial, the six Chief Petty Officer Bungalows on Ford Island, and mooring quays F6, F7, and F8, which constituted part of Battleship Row. The USS ARIZONA and USS UTAH vessels will not be designated as part of the national monument, but instead will be retained by the Department of Defense (through the Department of the Navy) as the final resting place for those entombed there.

Three sites are located in Alaska's Aleutian Islands. The first is the crash site of a Consolidated B-24D Liberator bomber—an aircraft of a type that played a highly significant role in World War II—located on Atka Island. The second is the site of Imperial Japan's occupation of Kiska Island, beginning in June 1942, which marks the northern limit of Imperial Japan's expansion in the Pacific. The Kiska site includes historic relics such as Imperial Japanese coastal and antiaircraft defenses, camps, roads, an airfield, a submarine base, a seaplane base, and other installations, as well as the remains of Allied defenses, including runway facilities and gun batteries.

The third Aleutian designation is on Attu Island, the site of the only land battle fought in North America during World War II. It still retains the scars of the battle: thousands of shell and bomb craters in the tundra; Japanese trenches, foxholes, and gun encampments; American ammunition magazines and dumps; and spent cartridges, shrapnel, and shells located at the scenes of heavy fighting. Attu later served as a base for bombing missions against Japanese holdings.

The last of the nine designations will bring increased understanding of the high price paid by some Americans on the home front. The Tule Lake Segregation Center National Historic Landmark and nearby Camp Tule Lake in California were both used to house Japanese-Americans relocated from the west coast of the United States. They encompass the original segregation center's stockade, the War Relocation Authority Motor Pool, the Post Engineer's Yard and Motor Pool, a small part of the Military Police Compound, several historic structures used by internees and prisoners of war at Camp Tule Lake, and the sprawling landscape that forms the historic setting.

WHEREAS much of the Federal property within the World War II Valor in the Pacific National Monument is easily accessible to visitors from around the world;

WHEREAS the Secretary of the Interior should be authorized and directed to interpret the broader story of World War II in the Pacific in partnership with the Department of Defense, the States of Hawaii, Alaska, and California, and other governmental and non-profit organizations;

WHEREAS the World War II Valor in the Pacific National Monument will promote understanding of related resources, encourage continuing research, present interpretive opportunities and programs for visitors to better understand and honor the sacrifices borne by the Greatest Generation, and tell the story from Pearl Harbor to Peace;

WHEREAS section 2 of the Act of June 8, 1906 (34 Stat. 225, 16 U.S.C. 431) (the "Antiquities Act") authorizes the President, in his discretion, to declare by public proclamation historic landmarks, historic and prehistoric structures, and other objects of historic or scientific interest that are situated upon lands owned or controlled by the Government of the United States to be national monuments, and to reserve as a part thereof parcels of land, the limits of which in all cases shall be confined to the smallest area compatible with the proper care and management of the objects to be protected;

WHEREAS it is in the public interest to preserve the areas described above and on the attached maps as the World War II Valor in the Pacific National Monument;

NOW, THEREFORE, I, GEORGE W. BUSH, President of the United States of America, by the authority vested in me by section 2 of the Act of June 8, 1906 (34 Stat. 225, 16 U.S.C. 431), do proclaim that there are hereby set apart and reserved as the World War II Valor in the Pacific National Monument for the purpose of protecting the objects described above, all lands and interests in lands owned or controlled by the Government of the United States within the boundaries described on the accompanying maps, which are attached and form a part of this proclamation. The Federal lands and interests in land reserved consist of approximately 6,310 acres, which is the smallest area compatible with the proper care and management of the objects to be protected.

All Federal lands and interests in lands within the boundaries of this monument are hereby appropriated and withdrawn from all forms of entry, location, selection, sale, leasing, or other disposition under the public land laws, including, but not limited to, withdrawal from location, entry, and patent under mining laws, and from disposition under all laws relating to mineral and geothermal leasing.

#### **Management of the National Monument**

The Secretary of the Interior shall manage the monument through the National Park Service and the U.S. Fish and Wildlife Service, pursuant to applicable legal authorities, to implement the purposes of this proclamation.



The National Park Service shall generally administer the national monument, except that the U.S. Fish and Wildlife Service shall administer the portions of the national monument that are within a national wildlife refuge. The National Park Service and the U.S. Fish and Wildlife Service may prepare an agreement to share, consistent with applicable laws, whatever resources are necessary to properly manage the monument.

For the purposes of preserving, interpreting, and enhancing public understanding and appreciation of the national monument and the broader story of World War II in the Pacific, the Secretary of the Interior, in consultation with the Secretary of Defense, shall prepare a management plan within 3 years of the date of this proclamation.

The Secretary of the Interior shall have management responsibility for the monument sites and facilities in Hawaii within the boundaries designated on the accompanying maps to the extent necessary to implement this proclamation, including the responsibility to maintain and repair the Chief Petty Officer Bungalows and other monument facilities. The Department of Defense may retain the authority to control access to those sites. The Department of the Interior through the National Park Service and the Department of the Navy may execute an agreement to provide for the operational needs and responsibilities of each Department in implementing this proclamation.

#### **Armed Forces Actions**

1. The prohibitions required by this proclamation shall not restrict activities and exercises of the Armed Forces (including those carried out by the United States Coast Guard).
2. All activities and exercises of the Armed Forces shall be carried out in a manner that avoids, to the extent practicable and consistent with operational requirements, adverse impacts on monument resources and qualities.
3. In the event of threatened or actual destruction of, loss of, or injury to a monument resource or quality resulting from an incident, including but not limited to spills and groundings, caused by a component of the Department of Defense or any other Federal agency, the cognizant component shall promptly coordinate with the Secretary of the Interior for the purpose of taking appropriate actions to respond to and mitigate the harm and, if possible, restore or replace the monument resource or quality.
4. Nothing in this proclamation or any regulation implementing it shall limit or otherwise affect the Armed Forces' discretion to use, maintain, improve, or manage any real property under the administrative control of a Military Department or otherwise limit the availability of such real property for military mission purposes.

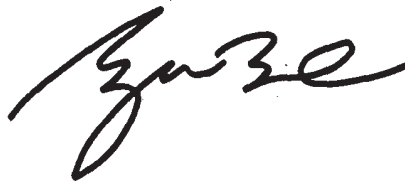
The establishment of this monument is subject to valid existing rights.

Nothing in this proclamation shall be deemed to revoke any existing withdrawal, reservation, or appropriation; however, the national monument shall be the dominant reservation.

Nothing in this proclamation shall alter the authority of any Federal agency to take action in the monument area where otherwise authorized under applicable legal authorities, except as provided by this proclamation.

Warning is hereby given to all unauthorized persons not to appropriate, injure, destroy, or remove any feature of this monument and not to locate or settle upon any lands thereof.

IN WITNESS WHEREOF, I have hereunto set my hand this fifth day of December, in the year of our Lord two thousand eight, and of the Independence of the United States of America the two hundred and thirty-third.



**JOINT TICKETING AUTHORITY – FACILITATION OF ADMISSION TO HISTORIC ATTRACTIONS WITHIN PEARL HARBOR NAVAL COMPLEX, PUBLIC LAW 111-88, OCTOBER 30, 2009 AND AMENDED APRIL 15, 2011 BY PL 112-10**

**PEARL HARBOR NAVAL COMPLEX, JOINT TICKETING**

**SEC. 121. (a) DEFINITIONS.—**In this section:

(1) **HISTORIC ATTRACTION.—**The term “historic attraction” mean a historic attraction within the Pearl Harbor Naval Complex, including—

(A) the USS Bowfin Submarine Museum and Park;

(B) the Battleship Missouri Memorial;

(C) the Pacific Aviation Museum-Pearl Harbor; and

(D) any other historic attraction within the Pearl Harbor Naval Complex that—

(i) the Secretary identifies as a Pearl Harbor historic attraction; and

(ii) is not administered or managed by the Secretary.

(2) **MONUMENT.—**The term “Monument” means the Word War II Valor in the Pacific National Monument in the State of Hawaii.

(3) **SECRETARY.—**The term “Secretary” means the Secretary of the Interior.

(4) **VISITOR CENTER.—**The term “Visitor Center” means the visitor center located within the Pearl Harbor Naval Complex on land that is—

(A) within the Monument; and

(B) managed by the Secretary, acting through the Director of the National Park Service.

(b) **FACILITATION OF ADMISSION TO HISTORIC ATTRACTIONS WITHIN PEARL HARBOR NAVAL COMPLEX.—**

(1) **IN GENERAL.—**In managing the Monument, the Secretary may enter into an agreement with any organization that is authorized to administer or manage a historic attraction—

(A) to allow visitors to the historic attraction to gain access to the historic attraction by passing through security screening at the Visitor Center; and

(B) to allow the sale of tickets to a historic attraction within the Visitor Center by—

(i) employees of the National Park Service; or

(ii) the organization that administers or manages the historic attraction.

(2) **TERMS AND CONDITIONS.—**In any agreement entered into under paragraph (1), the Secretary—

(A) shall require the organization administering or managing the historic attraction to pay to the Secretary a reasonable fee to recover administrative costs of the Secretary associated with the use of the Visitor Center for public access and ticket sales;

(B) shall ensure that the liability of the United States is limited with respect to any liability arising from—

(i) the admission of the public through the Visitor Center to a historic attraction; and

(ii) the sale or issuance of any tickets to the historic attraction; and

(C) may include any other terms and conditions that the Secretary determines to be appropriate.

(3) **USE OF FEES.**—The proceeds of any amounts collected as fees under paragraph (2)(A) shall remain available, without further appropriation, for use by the Secretary for the Monument.

(4) **LIMITATION OF AUTHORITY.**—Nothing in this section authorizes the Secretary—

(A) to regulate or approve the rates for admission to a historic attraction;

(B) to regulate or manage any visitor services within the Pearl Harbor Naval Complex (other than the services managed by the National Park Service as part of the Monument); or

(C) to charge an entrance fee for admission to the Monument.

(5) **PROTECTION OF RESOURCES.**—Nothing in this section authorizes the Secretary or any organization that administers or manages a historic attraction to take any action in derogation of the preservation and protection of the values and resources of the Monument.

## Appendix B: Related Federal Legislation

Public Law / House or Senate Report	Date	Description
House Report 85-1125	August 13, 1957	Report to authorize construction of a USS <i>Arizona</i> memorial at Pearl Harbor
Senate Report 85-1229	January 28, 1958	Report to authorize construction of a USS <i>Arizona</i> memorial at Pearl Harbor
House Report 87-720	July 13, 1961	Report to authorize appropriation for use toward construction of USS <i>Arizona</i> Memorial at Pearl Harbor
Senate Report 87-770	August 24, 1961	Report to authorize appropriation for use toward construction of USS <i>Arizona</i> Memorial at Pearl Harbor
House Report 91-1527 for S 583	September 29, 1970	Report to authorize USS <i>Utah</i> memorial
Senate Report 91-1010	July 9, 1970	Report to authorize USS <i>Utah</i> memorial
Public Law 91-456	October 15, 1970	Authorized flying of American flag over remains of USS <i>Utah</i> in honor of men entombed inside
Acceptance Letter, United States Department of the Interior, Office of the Secretary	August 19, 1975	Established NPS stewardship and management of the USS <i>Arizona</i> Memorial and related visitor facilities, which formally began in 1980
Public Law 103-308	August 23, 1994	Designated December 7 of each year as “National Pearl Harbor Remembrance Day”

## Appendix C: Analysis of Fundamental Resources and Values

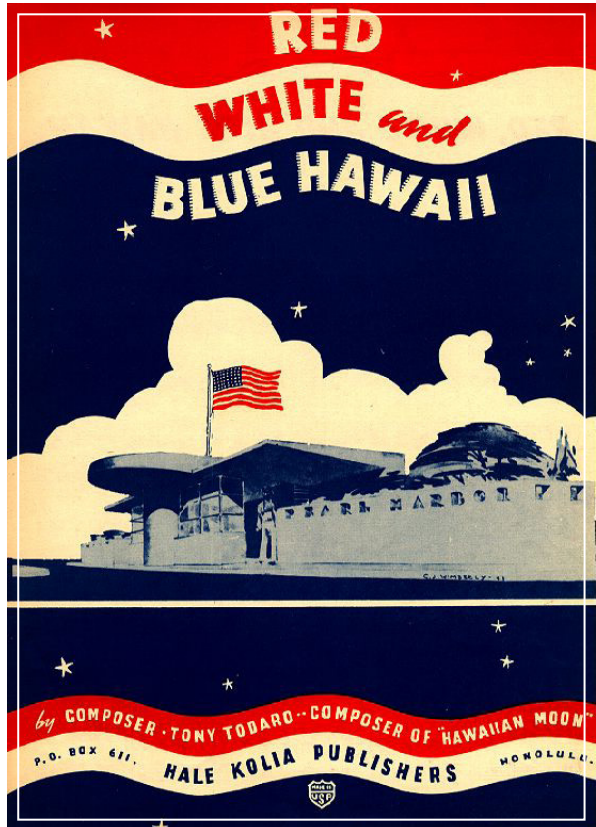
Fundamental Resource or Value	Historic Structures of Battleship Row
<b>Importance</b>	The shipwrecks, submerged resources, mooring quays F6 North and South, F7 North and South, and F8 North and South, and the Chief Petty Officer Bungalows and other historic and archeological sites are tangible features of Battleship Row and the Pearl Harbor environs.
<b>Related Significance Statements</b>	Japan Attacks Oahu; Pacific War Oahu; Remember the Sacrifices; Final Resting Place.
<b>Current Conditions and Trends</b>	<p><b>Conditions</b></p> <ul style="list-style-type: none"> <li>• Most historic structures are not listed in either the List of Classified Structures (LCS) or the Facility Management Software System (FMSS) databases. Both systems (LCS and FMSS) would probably rate the bungalows and mooring quays as “poor” if evaluated.</li> <li>• Chief Petty Officer Bungalows are currently in poor condition. World War II Valor in the Pacific National Monument, Pearl Harbor has not identified uses or priorities for maintenance work on bungalows.</li> <li>• Resources documenting original construction plans, remodel efforts, etc. exist for the bungalows.</li> <li>• The Chief Petty Officer Bungalows environmental assessment used state historic preservation officer consultation to meet National Historic Preservation Act (NHPA) section 110 compliance. Most cultural resources are inventoried and evaluated.</li> <li>• Most historical resources are already listed in the National Register of Historic Places. Documentation for sites listed in the National Register of Historic Places needs to be updated.</li> <li>• There is a good understanding of the mechanisms affecting site stability and taphonomic influences.</li> </ul> <p><b>Trends</b></p> <ul style="list-style-type: none"> <li>• Historic structures are mostly unstable and continue to accrue deferred maintenance.</li> <li>• A continued decrease in base funds for stabilization, maintenance, and operation of historic structures.</li> </ul>
<b>Threats and Opportunities</b>	<p><b>Threats</b></p> <ul style="list-style-type: none"> <li>• Land erosion behind the Chief Petty Officer Bungalows from wave action.</li> <li>• Catastrophic oil release.</li> <li>• Natural disasters (e.g., microburst flooding, tsunami, hurricane, earthquakes).</li> <li>• Insects and mold (bungalows).</li> <li>• Security (active military installation).</li> <li>• Critical deterioration of historic fabric.</li> <li>• Lack of funding for stabilization, maintenance, and operation of historic structures.</li> </ul> <p><b>Opportunities</b></p> <ul style="list-style-type: none"> <li>• Need to determine which historic structures are eligible for listing in the National Register of Historic Places.</li> <li>• Oil releasing from the USS Arizona is both a threat and an interpretive opportunity.</li> </ul>
<b>Related Resources and Values</b>	<ul style="list-style-type: none"> <li>• Oahu’s strategic location and development as a US military outpost (known as Fortress Oahu) was crucial to winning the Pacific War. Throughout the island are naval assets, air bases, seacoast defenses, ground force sites, and submerged resources related to the Pacific War.</li> <li>• These may also include sites in the broader Pacific Theater, such as Midway and Peleliu, which commemorate heroic sacrifices and valor.</li> </ul>

Fundamental Resource or Value	Historic Structures of Battleship Row
<b>Existing Data and Plans Related to the FRV</b>	<ul style="list-style-type: none"> <li>• Scope of collections statement.</li> <li>• Housekeeping plan.</li> <li>• Integrated pest management plan.</li> <li>• Security and fire safety plan.</li> <li>• Conservation surveys.</li> <li>• NPS oil response plan.</li> <li>• US Navy oil response plan.</li> </ul>
<b>Data and/or GIS Needs</b>	<ul style="list-style-type: none"> <li>• Gather information from cultural resources and physical sciences, in regard to potential threats to archeological resources. For example, land erosion behind the Chief Petty Officer Bungalows from wave action.</li> <li>• Need to compile resources (evaluating to see if current resources have more than sufficient depth for our needs) to develop an overview of the historic structures, and how they have changed over time.</li> <li>• Need to complete LCS information on Chief Petty Officer Bungalows, mooring quays, and other historic structures.</li> <li>• Continue observations of the shoreline on Ford Island near the Chief Petty Officer Bungalows / USS <i>Utah</i>.</li> <li>• Ongoing monitoring of the structural integrity of the USS <i>Arizona</i> and the USS <i>Utah</i> (oil release).</li> </ul>
<b>Planning Needs</b>	<ul style="list-style-type: none"> <li>• Comprehensive management plan for Ford Island memorials and historic structures.</li> <li>• Historic structures report and treatment plan (mooring quays and Chief Petty Officer Bungalows).</li> <li>• Resource stewardship strategy to address protection of historic structures.</li> <li>• Create a standardized document to form objectives for each historic structure. Initiate planning for adaptive reuse.</li> <li>• Create value analysis process for Chief Petty Officer Bungalows planning.</li> <li>• The management objectives for the mooring quays need to be determined.</li> <li>• Interpretive strategic plan.</li> <li>• Threat vulnerability assessment.</li> </ul>
<b>Laws, Executive Orders, and Regulations That Apply to the FRV, and NPS Policy-level Guidance</b>	<p><b>Laws, Executive Orders, and Regulations That Apply to the FRV</b></p> <ul style="list-style-type: none"> <li>• National Historic Preservation Act of 1966, as amended (16 USC 470)</li> <li>• Antiquities Act of 1906</li> <li>• Archeological and Historic Preservation Act of 1974</li> <li>• Archaeological Resources Protection Act of 1979</li> <li>• Historic Sites, Buildings, and Antiquities Act of 1935</li> <li>• Executive Order 11593, “Protection and Enhancement of the Cultural Environment”</li> <li>• “Protection of Historic Properties” (36 CFR 800)</li> </ul> <p><b>NPS Policy-level Guidance (NPS Management Policies 2006 and Director’s Orders)</b></p> <ul style="list-style-type: none"> <li>• NPS <i>Management Policies 2006</i> (§2.3.1.4, 5.1, 8.10, 1.6)</li> <li>• Director’s Order 24: <i>NPS Museum Collections Management</i></li> <li>• Director’s Order 28: <i>Cultural Resource Management</i></li> </ul>
<b>Partners and Stakeholders</b>	<ul style="list-style-type: none"> <li>• US military, active, retired, veterans, Ford Island community</li> <li>• WWII veteran groups (AMVETS, sons and daughters, greatest generation, VFW)</li> <li>• Pearl Harbor Historic Partners</li> <li>• Pacific Historic Parks Cooperating Association</li> <li>• Commercial tour industry</li> <li>• Historic Hawai’i Foundation</li> <li>• State, local, and national government</li> </ul>

Fundamental Resource or Value	The USS <i>Arizona</i> , the USS <i>Utah</i> , and the USS <i>Oklahoma</i> Memorials
<b>Importance</b>	The USS <i>Arizona</i> , the USS <i>Utah</i> , and the USS <i>Oklahoma</i> Memorials provide opportunities for people to commemorate, remember, and understand the events and sacrifices of December 7, 1941, and the Pacific War.
<b>Related Significance Statements</b>	Japan Attacks Oahu; Pacific War Oahu; Remember the Sacrifices; Final Resting Place; Portal to the Pacific War Story; Enduring Peace.
<b>Current Conditions and Trends</b>	<p><b>Conditions</b></p> <ul style="list-style-type: none"> <li>• Several components of the USS <i>Arizona</i> Memorial require maintenance including the dock and ramp, terrazzo floors, and shrine room.</li> <li>• The dock and ramp of the USS <i>Arizona</i> Memorial are in the process of being replaced. The USS <i>Arizona</i> Memorial has been researched and examined for treatment.</li> <li>• USS <i>Arizona</i> Memorial is listed as “fair condition” in the Archeological Sites Management and Information System, but is not addressed in the Facility Management Software System.</li> <li>• USS <i>Oklahoma</i> Memorial is visibly deteriorating and is being monitored.</li> <li>• USS <i>Utah</i> Memorial landscape needs refurbishment and monitoring.</li> <li>• The flagpoles for the USS <i>Arizona</i> and USS <i>Utah</i> memorials need safety mitigation given their location over the water.</li> <li>• The information and names on the memorials need data analysis and updating.</li> </ul> <p><b>Trends</b></p> <ul style="list-style-type: none"> <li>• The high profile and visibility of the memorials raises expectations for conditions, maintenance, and safety.</li> <li>• Continued decrease in base funds for stabilization, maintenance, and operation of memorials.</li> </ul>
<b>Threats and Opportunities</b>	<p><b>Threats</b></p> <ul style="list-style-type: none"> <li>• Catastrophic oil release from the USS <i>Arizona</i> and USS <i>Utah</i>.</li> <li>• Natural disasters (e.g., microburst flooding, tsunami, hurricane, earthquakes).</li> <li>• Security (active military installation).</li> <li>• Critical deterioration.</li> <li>• Lack of funding for stabilization, maintenance, and operation of the memorials.</li> </ul> <p><b>Opportunities</b></p> <ul style="list-style-type: none"> <li>• Need to determine if USS <i>Oklahoma</i> Memorial is eligible for listing in the national register.</li> <li>• Oil releasing from USS <i>Arizona</i> is both a threat and an interpretive opportunity.</li> <li>• As an international icon, the USS <i>Arizona</i> Memorial provides opportunities for partners to fundraise for restoration and maintenance.</li> </ul>
<b>Existing Data and Plans Related to the FRV</b>	<ul style="list-style-type: none"> <li>• NPS oil response plan.</li> <li>• US Navy oil response plan.</li> <li>• Wayside exhibit plan.</li> </ul>
<b>Data and/or GIS Needs</b>	<ul style="list-style-type: none"> <li>• Research need – validate or correct names, ranks, etc. of those listed on the wall, before replacing the wall in the USS <i>Arizona</i> Memorial.</li> <li>• Structural analysis of USS <i>Arizona</i> Memorial, identify maintenance needs.</li> <li>• Retrieve the current GIS/survey data from the US Navy and convert it to proper current Cultural Resources Division standards.</li> <li>• Convert USS <i>Arizona</i> data to current standards.</li> <li>• Collect data for USS <i>Utah</i> Memorial.</li> <li>• Develop a map that shows threats through cartographic representation.</li> </ul>

Fundamental Resource or Value	The USS <i>Arizona</i> , the USS <i>Utah</i> , and the USS <i>Oklahoma</i> Memorials
<p><b>Planning Needs</b></p>	<ul style="list-style-type: none"> <li>• Historic structures report and treatment plan for USS <i>Arizona</i> Memorial.</li> <li>• Interpretive strategic plan.</li> <li>• Comprehensive management plan for Ford Island memorials and historic structures.</li> <li>• Threat vulnerability assessment.</li> </ul>
<p><b>Laws, Executive Orders, and Regulations That Apply to the FRV, and NPS Policy-level Guidance</b></p>	<p><b>Laws, Executive Orders, and Regulations That Apply to the FRV</b></p> <ul style="list-style-type: none"> <li>• National Historic Preservation Act of 1966, as amended (16 USC 470)</li> <li>• Antiquities Act of 1906</li> <li>• Archeological and Historic Preservation Act of 1974</li> <li>• Archaeological Resources Protection Act of 1979</li> <li>• Historic Sites, Buildings, and Antiquities Act of 1935</li> <li>• Museum Act of 1955, as amended</li> <li>• “Curation of Federally-Owned and Administered Archeological Collections” (36 CFR 79)</li> <li>• “Protection of Historic Properties” (36 CFR 800)</li> </ul> <p><b>NPS Policy-level Guidance (NPS <i>Management Policies 2006</i> and <i>Director’s Orders</i>)</b></p> <ul style="list-style-type: none"> <li>• NPS <i>Management Policies 2006</i> (§2.3.1.4, 5.1, 8.10, 1.6)</li> <li>• Director’s Order 24: <i>NPS Museum Collections Management</i></li> <li>• Director’s Order 28: <i>Cultural Resource Management</i></li> <li>• NPS <i>Museum Handbook</i>, parts I, II, and III</li> </ul>
<p><b>Partners and Stakeholders</b></p>	<ul style="list-style-type: none"> <li>• US military, active, retired, veterans, Ford Island community</li> <li>• WW II veteran groups (AMVETS, sons and daughters, greatest generation, VFW)</li> <li>• Pearl Harbor Historic Partners</li> <li>• Pacific Historic Parks Cooperating Association</li> <li>• Commercial tour industry</li> <li>• Historic Hawai’i Foundation</li> <li>• State, local, and national government</li> </ul>





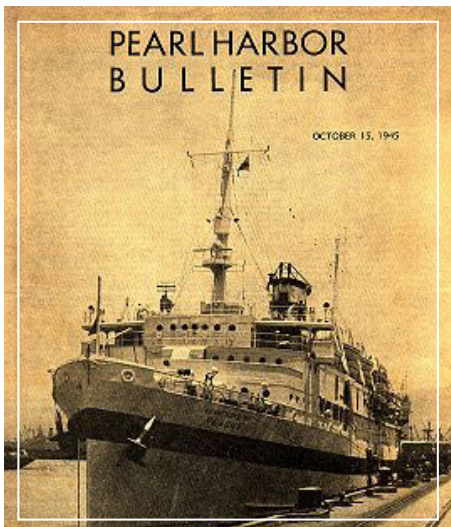
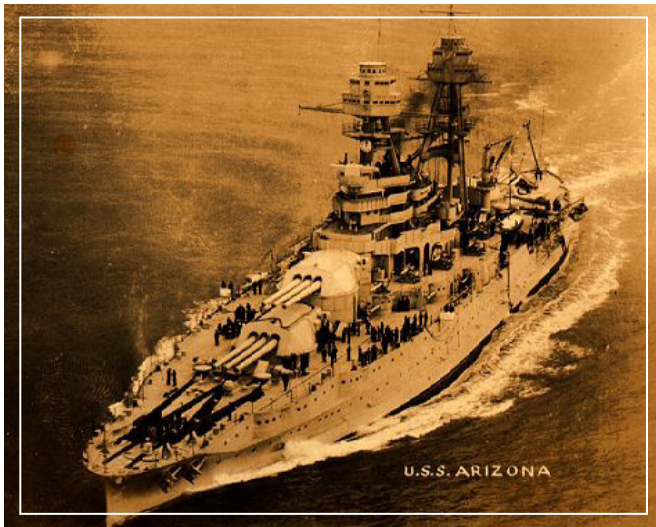
Fundamental Resource or Value	Physical Record
<p><b>Importance</b></p>	<p>The original objects, records, manuscripts, photos, and oral histories that document the events of the Pacific War, including the build-up to war and its aftermath.</p>
<p><b>Related Significance Statements</b></p>	<p>Japan Attacks Oahu; Pacific War Oahu; Remember the Sacrifices; Final Resting Place; Enduring Peace.</p>
<p><b>Current Conditions and Trends</b></p>	<p><b>Conditions</b></p> <ul style="list-style-type: none"> <li>• Oral history research data are available, but there are challenges to making it accessible.</li> <li>• Research is being conducted and analysis completed to understand the relationship of the monument's museum collection to the historic context(s) for the monument.</li> <li>• Museum collection is in fair condition with periodic conservation projects being conducted.</li> </ul> <p><b>Trends</b></p> <ul style="list-style-type: none"> <li>• Primary resources (the survivors, civilian witnesses) are dying.</li> <li>• Staffing and funding for the oral history program has diminished.</li> </ul>



Fundamental Resource or Value	Physical Record
<b>Threats and Opportunities</b>	<p><b>Threats</b></p> <ul style="list-style-type: none"> <li>• Natural disasters (e.g., microburst flooding, tsunami, hurricane, earthquakes).</li> <li>• Security (active military installation).</li> <li>• Critical deterioration of oral history media. Digital files for audio and video interviews require continued updates (in order to be accessible by ever-changing hardware).</li> <li>• Reduced funding for collection, maintenance, operation of historic objects, oral histories.</li> <li>• Reduced funding for staffing.</li> <li>• Lack of a long-term storage facility for collections.</li> <li>• The disappearing availability of primary resources (oral history interviews of elderly individuals).</li> </ul> <p><b>Opportunities</b></p> <ul style="list-style-type: none"> <li>• The oral history program scope needs to be expanded to reflect the broadened mandate for the monument.</li> <li>• There are opportunities to make video oral histories available for public use.</li> <li>• Create a joint federal storage facility (could be military, partners, nonprofit, etc.).</li> <li>• Opportunities to partner with other museums and obtain copies of oral histories related to the Pacific War (e.g., Library of Congress, National Museum of the Pacific War, North Texas State University).</li> <li>• Families of survivors and civilian witnesses can provide additional materials for collections.</li> </ul>
<b>Related Resources and Values</b>	<ul style="list-style-type: none"> <li>• Physical records in other collections documenting the Pacific War, including: <ul style="list-style-type: none"> <li>• National Archives II (Maryland)</li> <li>• Naval Heritage Command</li> <li>• Carlisle Barracks</li> <li>• Hamilton Library of the University of Hawai'i</li> <li>• Library of Congress</li> <li>• US Air Force History Center</li> <li>• North Texas State University</li> <li>• National Museum of the Pacific War</li> <li>• National WWII Museum</li> <li>• Japanese American Museum of Los Angeles (internment experience)</li> <li>• Marine Corps Museum at Quantico</li> </ul> </li> </ul>
<b>Existing Data and Plans Related to the FRV</b>	<ul style="list-style-type: none"> <li>• Collections management plan.</li> <li>• Emergency response plan for museum collections.</li> <li>• Scope of collections.</li> </ul>
<b>Data and/or GIS Needs</b>	<ul style="list-style-type: none"> <li>• Collect oral histories.</li> </ul>

Fundamental Resource or Value	Physical Record
<p><b>Planning Needs</b></p>	<ul style="list-style-type: none"> <li>• Update scope of collection statement. Review the intent of Congress as it relates to the museum collection of the USS <i>Arizona</i> Memorial.</li> <li>• Update collection storage plan.</li> <li>• Housekeeping plan.</li> <li>• Integrated pest management plan.</li> <li>• Upon development of an internal exhibit in a Chief Petty Officer Bungalow, consider a historic furnishings plan.</li> <li>• Oral history plan.</li> <li>• Resource stewardship strategy.</li> <li>• Threat vulnerability assessment.</li> </ul>
<p><b>Laws, Executive Orders, and Regulations That Apply to the FRV, and NPS Policy-level Guidance</b></p>	<p><b>Laws, Executive Orders, and Regulations That Apply to the FRV</b></p> <ul style="list-style-type: none"> <li>• “Protection of Historic Properties” (36 CFR 800)</li> <li>• Act for the Preservation of American Antiquities Act of 1906 (16 USC §§ 431433)</li> <li>• American Indian Religious Freedom Act of 1978</li> <li>• Archaeological Resources Protection Act of 1979, as amended (16 USC §§ 470aanun)</li> <li>• Archeological and Historic Preservation Act of 1974 (16 USC §§ 469-469c)</li> <li>• Bald and Golden Eagle Protection Act of 1940, as amended (16 USC §§ 668-668d)</li> <li>• Copyright Act of 1976 (17 USC § 101 et seq.)</li> <li>• “Curation of Federally-Owned and Administered Archeological Collections” (36 CFR 79)</li> <li>• Disposal of Records of 1968, as amended (44 USC § 3301 et seq.)</li> <li>• Endangered Species Act of 1973, as amended (16 USC §§ 1531-1543), including section 8A (16 USC § 1537a) through which the United States implemented the 1983 Convention on International Trade in Endangered Species of Wild Fauna and Flora</li> <li>• Executive Order 11593, “Protection and Enhancement of the Cultural Environment”</li> <li>• Federal Accounting Standards Advisory Board, Statement of Federal Financial Accounting Standards No. 29 - Heritage Assets and Stewardship Land</li> <li>• Federal Property and Administrative Services Act of 1949, as amended (40 USC § 524)</li> <li>• “Federal Property Management Regulations” (41 CFR 101)</li> <li>• Federal Records Act of 1950, as amended (“Records Management by Federal Agencies” [44 USC § 3101 et seq.]</li> <li>• “Federal Records; General” (36 CFR 1220)</li> <li>• Freedom of Information Act of 1966 (5 USC § 552)</li> <li>• Historic Sites, Buildings, and Antiquities Act of 1935</li> <li>• “Implementing Disposition” (36 CFR 1226)</li> <li>• Lacey Act of 1900 (18 USC 43-44; 16 USC §§ 3371-3378)</li> <li>• Marine Mammal Protection Act of 1972 (16 USC §§ 1361-1407)</li> <li>• Migratory Bird Treaty Act of 1918 (16 USC §§ 703-712)</li> <li>• National Historic Preservation Act of 1966, as amended (16 USC §§ 470-470t)</li> <li>• Native American Graves Protection and Repatriation Act of 1990 (25 USC §§ 3001-3013)</li> <li>• “Native American Graves Protection and Repatriation Act Regulations” (43 CFR 10)</li> <li>• Paleontological Resources Preservation Act of 2009 (16 USC § 470aaa et seq.)</li> <li>• Personal Property Management, 410 DM</li> <li>• “Preservation of American Antiquities” (43 CFR 3)</li> <li>• Preservation, Arrangement, Duplication, Exhibition of Records of 1968, as amended (44 USC § 2109)</li> </ul>

Fundamental Resource or Value	Physical Record
<p><b>Laws, Executive Orders, and Regulations That Apply to the FRV, and NPS Policy-level Guidance</b></p>	<p><b>Laws, Executive Orders, and Regulations That Apply to the FRV (continued)</b></p> <ul style="list-style-type: none"> <li>• "Protection of Archaeological Resources" (43 CFR 7)</li> <li>• "Records Disposition Program" (36 CFR 1224)</li> <li>• Records Management, 380 Departmental Manual (DM)</li> <li>• Reservoir Salvage Act of 1960, as amended (16 USC §§ 469-469c)</li> </ul> <p><b>NPS Policy-level Guidance (NPS Management Policies 2006 and Director's Orders)</b></p> <ul style="list-style-type: none"> <li>• NPS Management Policies 2006 (§2.3.1.4, 5.1, 8.10, 1.6)</li> <li>• Director's Order 24: NPS Museum Collections Management</li> <li>• Director's Order 28: Cultural Resource Management</li> </ul>
<p><b>Partners and Stakeholders</b></p>	<ul style="list-style-type: none"> <li>• North Texas State University</li> <li>• Library of Congress</li> <li>• National Museum of the Pacific War</li> <li>• Pearl Harbor survivors</li> <li>• National WW II Museum</li> <li>• Marine Corps Museum at Quantico</li> </ul>



Fundamental Resource or Value	Knowledge and Understanding of the Pacific War during WW II
<b>Importance</b>	The first-hand narratives from those who lived the story; evidence of the social, political, and economic impacts of the war; and ongoing research conducted at the monument contribute to site stewardship, protection of resources, and communicating the story.
<b>Related Significance Statements</b>	Pacific War Oahu; Remember the Sacrifices; Final Resting Place; Portal to the Pacific War Story; Enduring Peace.
<b>Current Conditions and Trends</b>	<p><b>Conditions</b></p> <ul style="list-style-type: none"> <li>• The monument has an extensive collection of material knowledge about the attack on Pearl Harbor to Midway.</li> <li>• Need literature, oral histories, photographs, documents, artifacts from after the attack to 1951.</li> <li>• Resource management needs for history are adequately addressed in the Performance Management Information System (PMIS).</li> </ul> <p><b>Trends</b></p> <ul style="list-style-type: none"> <li>• In response to the 2008 presidential proclamation, the monument is in the process of broadening its interpretive programming to include not just the events at Pearl Harbor, but the duration of the Pacific War; initial gathering has begun.</li> </ul>
<b>Threats and Opportunities</b>	<p><b>Threats</b></p> <ul style="list-style-type: none"> <li>• Monument staff is aware of the significance of historic structures and major threats (especially in the Chief Petty Officer Bungalows). Such threats include pests, sea level change, tree roots undermining building foundations, and falling tree branches.</li> <li>• Limited funding and staffing for research and collection.</li> <li>• Limited funding to support research, document preparation, oral history program transcription, and recordings.</li> <li>• Lack of a long-term storage facility for monument collections.</li> <li>• Inability to capture events and information shared on social media sites.</li> <li>• Inadequate telecommunications (intranet and internet) and data infrastructure necessary to share and store information.</li> </ul> <p><b>Opportunities</b></p> <ul style="list-style-type: none"> <li>• There are opportunities to make video oral histories available for public use.</li> <li>• Create a joint federal storage facility (could be with military, partners, nonprofit, etc.).</li> <li>• Opportunities to partner with other museums and obtain copies of oral histories related to the Pacific War (e.g., Library of Congress, National Museum of the Pacific War, North Texas State University).</li> <li>• Families of survivors and civilian witnesses can provide additional materials and knowledge for collections and interpretation.</li> <li>• Opportunities to partner with other national parks and universities.</li> </ul>
<b>Existing Data and Plans Related to the FRV</b>	<ul style="list-style-type: none"> <li>• Oral history recordings, supportive documents, transcriptions.</li> <li>• Historic studies of the Chief Petty Officer Bungalows and mooring quays.</li> </ul>
<b>Data and/or GIS Needs</b>	<ul style="list-style-type: none"> <li>• Ethnographic overview.</li> <li>• Historic resources study.</li> <li>• Social media and technological capacity to store and share research.</li> </ul>

Fundamental Resource or Value	Knowledge and Understanding of the Pacific War during WW II
<p><b>Planning Needs</b></p>	<ul style="list-style-type: none"> <li>• Identify baseline documents to support broader cultural resource management.</li> <li>• Develop records management standards for maintaining proper files of administrative records that can be compiled into an administrative history in the future.</li> <li>• Administrative history.</li> <li>• Oral history plan.</li> <li>• Resource stewardship strategy.</li> </ul>
<p><b>Laws, Executive Orders, and Regulations That Apply to the FRV, and NPS Policy-level Guidance</b></p>	<p><b>Laws, Executive Orders, and Regulations That Apply to the FRV</b></p> <ul style="list-style-type: none"> <li>• Antiquities Act of 1906</li> <li>• National Historic Preservation Act of 1966, as amended (16 USC 470)</li> <li>• Archeological and Historic Preservation Act of 1974</li> <li>• Museum Act (16 USC 18f through 18f-3)</li> <li>• Executive Order 11593, “Protection and Enhancement of the Cultural Environment”</li> <li>• “Protection of Historic Properties” (36 CFR 800)</li> </ul> <p><b>NPS Policy-level Guidance (NPS Management Policies 2006 and Director’s Orders)</b></p> <ul style="list-style-type: none"> <li>• NPS Management Policies 2006 (chapter 5)</li> <li>• Director’s Order 24: NPS Museum Collections Management</li> <li>• Director’s Order 28: Cultural Resource Management</li> <li>• Director’s Order 28A: Archeology</li> <li>• NPS Museum Handbook, parts I, II, and III</li> </ul>
<p><b>Partners and Stakeholders</b></p>	<ul style="list-style-type: none"> <li>• Universities (National and International)</li> <li>• World War II national parks</li> <li>• North Texas State University</li> <li>• Library of Congress</li> <li>• National Museum of the Pacific War</li> <li>• Pearl Harbor survivors</li> <li>• National WW II Museum</li> <li>• Marine Corps Museum at Quantico</li> <li>• US Military, active, retired, and veterans, Ford Island community</li> <li>• WW II veteran groups (sons and daughters, greatest generation, veterans of foreign wars)</li> <li>• Pearl Harbor Historic Partners</li> <li>• Pacific Historic Parks Cooperating Association</li> <li>• Historic Hawai’i Foundation</li> <li>• State, local, and national governments</li> </ul>





Fundamental Resource or Value	Ability to Reach People with an Authentic and Relevant Story of the Pacific War
<p><b>Importance</b></p>	<p>World War II Valor in the Pacific National Monument, Pearl Harbor is an internationally recognized, accessible, and highly visited site that reaches many people through its exhibits, commemorative and ceremonial events, public programs, and guided boat tours to the USS <i>Arizona</i> Memorial.</p>
<p><b>Related Significance Statements</b></p>	<p>Portal to the Pacific War Story.</p>
<p><b>Current Conditions and Trends</b></p>	<p><b>Conditions</b></p> <ul style="list-style-type: none"> <li>• The functionality of exhibits requires constant care, maintenance, and repair.</li> <li>• Wear and tear of the museum and outdoor exhibits from high volumes of visitation and the local weather conditions require constant upkeep and maintenance.</li> <li>• Exhibits focus on the Pearl Harbor attack (including events leading up to the attack) and the immediate aftermath; the national monument does not have facilities/methods to tell the broader story.</li> <li>• Any event that takes place at Pearl Harbor is of international interest and focus.</li> <li>• Public programs are well-attended and well-received.</li> <li>• The site is highly sought after for ceremonies and events. However, the national monument lacks the infrastructure to support these events.</li> </ul> <p><b>Trends</b></p> <ul style="list-style-type: none"> <li>• The new, larger, more complex visitor center will continue to need maintenance of its complex technical systems (heating, ventilation, and air-conditioning; audio visual; etc.) to ensure a visitor experience that is meaningful and high caliber.</li> <li>• Funding is not adequate year after year for basic maintenance and care of exhibits, interpretation, and visitor protection.</li> <li>• Every year there are additional visitors.</li> <li>• Changing demographics affect how we tell the story.</li> <li>• Mass transportation options to the monument will improve with the completion of Honolulu Rail Transit.</li> <li>• Increase in commercial and public transportation opportunities.</li> <li>• Continued lack of parking for the number of visitors that come each year.</li> </ul>

Fundamental Resource or Value	Ability to Reach People with an Authentic and Relevant Story of the Pacific War
<b>Threats and Opportunities</b>	<p><b>Threats</b></p> <ul style="list-style-type: none"> <li>• In the coming years the monument faces a loss of human connection to the events of World War II and an increase in international visits from Asia, both of which will affect future interpretive needs. How can we continue to share the stories of World War II in the Pacific as generations get more removed in time from the event and there are fewer World War II survivors?</li> <li>• Monument facilities and resources are at or near sea level. Natural disasters and rising sea levels could affect memorials and facilities.</li> <li>• The National Park Service relies on the US Navy for transportation to the memorial. Without this service, the fundamental interpretive experience of the visitor would be lost.</li> <li>• Lack of funding to support interpretive programs and site and exhibit maintenance and development.</li> <li>• Given the monument’s location in an active military installation, security is a main aspect and concern of monument operations and visitor management.</li> </ul> <p><b>Opportunities</b></p> <ul style="list-style-type: none"> <li>• Interpretive planning should be coordinated with other parks that tell the story of the Pacific War, particularly War in the Pacific National Historical Park and American Memorial Park.</li> <li>• Need to address the “visitors” or audience who will never set foot in the national monument.</li> <li>• Consider potential interactions between World War II Valor in the Pacific National Monument, Pearl Harbor and Honouliuli Internment Camp, if designated.</li> <li>• The monument now includes a wider range of resources and seeks to tell an expanded story about Pearl Harbor and the Pacific War.</li> <li>• To continue to ensure a high-quality visitor experience the monument will need to continue to update exhibits, special events, multimedia, social media, ranger-led programs, etc.</li> <li>• Evaluate the physical security procedure in place at the monument.</li> </ul>
<b>Existing Data and Plans Related to the FRV</b>	<ul style="list-style-type: none"> <li>• Operation and maintenance manuals for exhibits.</li> </ul>
<b>Data and/or GIS Needs</b>	<ul style="list-style-type: none"> <li>• Visitor use studies.</li> <li>• List interpretive assets in the Facility Management Software System (underway).</li> <li>• Better understanding of potential sea level rise projections, scenarios, and implications for the monument facilities.</li> <li>• Cultural landscape inventory II.</li> <li>• Cultural resources base map.</li> <li>• Total cost of facility ownership study. Study completed two years ago, but data were never finalized.</li> </ul>

<b>Fundamental Resource or Value</b>	<b>Ability to Reach People with an Authentic and Relevant Story of the Pacific War</b>
<b>Planning Needs</b>	<ul style="list-style-type: none"> <li>• Business plan.</li> <li>• Commercial services plan/strategy.</li> <li>• Interpretive strategic plan.</li> <li>• Facilities maintenance plan, including preventative maintenance schedule.</li> <li>• Cyclic exhibit maintenance program; annual contract for professional cleaners and conservation.</li> <li>• Post-occupancy review to consider what to do about portions of the new facility that are not properly functioning as planned.</li> <li>• Park asset management plan.</li> <li>• Entrance fee study.</li> <li>• Emergency operations plans.</li> <li>• Safety planning and training.</li> <li>• Strategic partnerships evaluation/plan.</li> <li>• Visitor use management plan.</li> <li>• Visitor transportation studies and planning.</li> </ul>
<b>Laws, Executive Orders, and Regulations That Apply to the FRV, and NPS Policy-level Guidance</b>	<p><b>Laws, Executive Orders, and Regulations That Apply to the FRV</b></p> <ul style="list-style-type: none"> <li>• Americans with Disabilities Act of 1990, 28 CFR 36</li> <li>• Architectural Barriers Act of 1968</li> <li>• Architectural Barriers Act Accessibility Standards 2006</li> <li>• Rehabilitation Act of 1973</li> <li>• NPS Concessions Management Improvement Act of 1998</li> </ul> <p><b>NPS Policy-level Guidance (NPS Management Policies 2006 and Director’s Orders)</b></p> <ul style="list-style-type: none"> <li>• NPS Management Policies 2006 (chapters 7, 8, 9, and 10)</li> <li>• Director’s Order 6: <i>Interpretation and Education</i></li> <li>• Director’s Order 42: <i>Accessibility for Visitors with Disabilities in National Park Service Programs and Services</i></li> <li>• NPS Transportation Planning Guidebook</li> </ul>
<b>Partners and Stakeholders</b>	<ul style="list-style-type: none"> <li>• Universities (National and International)</li> <li>• World War II national parks</li> <li>• North Texas State University</li> <li>• Library of Congress</li> <li>• National Museum of the Pacific War</li> <li>• Pearl Harbor survivors</li> <li>• National WW II Museum</li> <li>• Marine Corps Museum at Quantico</li> <li>• US military, active, retired, and veterans, Ford Island community</li> <li>• WW II veteran groups (AMVETS, sons and daughters, greatest generation, VFW)</li> <li>• Pearl Harbor Historic Partners</li> <li>• Pacific Historic Parks Cooperating Association</li> <li>• Historic Hawai’i Foundation</li> <li>• State, local, and national governments</li> </ul>



Fundamental Resource or Value	Sense of Place
<b>Importance</b>	Physical access to the Pearl Harbor landscape, artifacts, and remnants of the war inspires visitors to form their own meaningful connections with the Pacific War story and the sacrifices that were made.
<b>Related Significance Statements</b>	Japan Attacks Oahu; Pacific War Oahu; Remembering the Sacrifices; Final Resting Place; Portal to the Pacific War Story; Enduring Peace.
<b>Current Conditions and Trends</b>	<p><b>Conditions</b></p> <ul style="list-style-type: none"> <li>• The monument receives almost 500,000 additional visitors annually since the completion of the visitor center renovations.</li> <li>• Thousands of visitors move through the site every day.</li> <li>• Circulation and management of taxis and tour companies is lacking.</li> <li>• Signage and way finding is confusing in general. Information is only provided in one direction.</li> <li>• Visitor capacity challenges affect many aspects of monument management (facilities maintenance, limited tickets, parking, and availability on boats).</li> <li>• There are early morning circulation challenges related to vehicles and people as a result of visitors generally arriving at the same time each day.</li> <li>• Parking lot is at capacity daily and pedestrian access to existing and planned public transportation is confusing and dangerous.</li> <li>• With the exception of active and retired military, the resources on Ford Island are currently only accessible via shuttle bus.</li> <li>• Pearl Harbor is a national historic landmark. Cultural landscapes, as they relate to military use of the land, have been identified and evaluated.</li> <li>• USS <i>Oklahoma</i> is accessible but there is little awareness of this site.</li> <li>• USS <i>Utah</i> is only accessible to active and retired military.</li> </ul> <p><b>Trends</b></p> <ul style="list-style-type: none"> <li>• Supply does not meet the demand – especially regarding access to the USS <i>Arizona</i> memorial. Transportation funding for the general public does not exist. Funding for maintenance and interpretive opportunities for Ford Island sites is limited.</li> </ul>
<b>Threats and Opportunities</b>	<p><b>Threats</b></p> <ul style="list-style-type: none"> <li>• Access is needed to support visitation to Ford Island sites, located inside a secure military installation Joint Base Pearl Harbor-Hickam.</li> <li>• Changes in security levels could affect access to Ford Island.</li> <li>• Despite improvements in traffic flow at the new visitor center complex, transportation issues remain: tour buses drop visitors off at the wrong locations, taxis troll for fares, car break-ins occur in the parking lots.</li> </ul> <p><b>Opportunities</b></p> <ul style="list-style-type: none"> <li>• Development of a long-term solution to address taxi management (potential concessions contract).</li> <li>• The monument has special authority to operate a transit system between historic parks and naval base.</li> <li>• Engage with Pearl Harbor Historic Path and Bikeshare Hawai'i for interpretive ranger program.</li> </ul>
<b>Existing Data and Plans Related to the FRV</b>	<ul style="list-style-type: none"> <li>• The transportation study underway will provide recommendations for access and circulation related to the visitor center and Ford Island sites.</li> <li>• US Navy interpretive trail plan.</li> </ul>

Fundamental Resource or Value	Sense of Place
<p><b>Data and/or GIS Needs</b></p>	<ul style="list-style-type: none"> <li>• Visitor use studies.</li> <li>• List interpretive assets in Facility Management Software System (underway).</li> <li>• Better understanding of potential sea level rise projections, scenarios, and implications for the monument facilities.</li> <li>• Cultural landscape inventory II.</li> <li>• Cultural resources base map.</li> <li>• Total cost of facility ownership study. Study completed two years ago, but data were never finalized.</li> </ul>
<p><b>Planning Needs</b></p>	<ul style="list-style-type: none"> <li>• Interpretive strategic plan.</li> <li>• Facilities maintenance plan. Including preventative maintenance schedule.</li> <li>• Cyclic exhibit maintenance program; annual contract for professional cleaners and conservation.</li> <li>• Post-occupancy review to consider what to do about portions of the new facility that are not properly functioning as planned.</li> <li>• Park asset management plan.</li> <li>• Entrance fee study.</li> <li>• Strategic partnership evaluation/plan.</li> <li>• Emergency operations plans.</li> <li>• Safety planning and training.</li> <li>• Visitor transportation studies and planning.</li> <li>• Visitor use management plan.</li> </ul>
<p><b>Laws, Executive Orders, and Regulations That Apply to the FRV, and NPS Policy-level Guidance</b></p>	<p><b>Laws, Executive Orders, and Regulations That Apply to the FRV</b></p> <ul style="list-style-type: none"> <li>• Americans with Disabilities Act of 1990, 28 CFR 36</li> <li>• Architectural Barriers Act of 1968</li> <li>• Architectural Barriers Act Accessibility Standards 2006</li> <li>• Rehabilitation Act of 1973</li> <li>• NPS Concessions Management Improvement Act of 1998</li> </ul> <p><b>NPS Policy-level Guidance (NPS Management Policies 2006 and Director's Orders)</b></p> <ul style="list-style-type: none"> <li>• NPS <i>Management Policies 2006</i> (chapters 7, 8, 9, and 10)</li> <li>• Director's Order 6: <i>Interpretation and Education</i></li> <li>• Director's Order 42: <i>Accessibility for Visitors with Disabilities in National Park Service Programs and Services</i></li> <li>• NPS <i>Transportation Planning Guidebook</i></li> </ul>
<p><b>Partners and Stakeholders</b></p>	<ul style="list-style-type: none"> <li>• Hawai'i Department of Transportation</li> <li>• Honolulu Rail Transit</li> <li>• City and County of Honolulu Department of Transportation Services</li> <li>• Local taxis</li> <li>• US Navy and broader military, Ford Island community</li> <li>• WW II veteran groups (AMVETS, sons and daughters, greatest generation, VFW)</li> <li>• Commercial tour companies</li> <li>• Pearl Harbor Historic Partners</li> <li>• Pacific Historic Parks Cooperating Association</li> <li>• Historic Hawai'i Foundation</li> <li>• State, local, and national governments</li> </ul>

## Appendix D: Recently Completed and Ongoing Planning and Data Collection Efforts Related to Key Park Issues

- **Chief Petty Officer Bungalows Re-use/Repair Value Analysis.** The Chief Petty Officer Bungalows re-use/repair value analysis is currently underway and will inform management decisions about future use and maintenance of the Chief Petty Officer Bungalows.
- **Cyclic Maintenance Program for Exhibits.** The monument is working on entering all interpretive assets into the FMSS system. After this process is complete the monument will submit a proposal for cyclic exhibit maintenance for long-term maintenance and management of exhibits.
- **Park Asset Management and Facilities Maintenance.** Monument staff will continue progress toward documentation of facility assets and maintenance needs over time. The new structures in the visitor center complex employ newer sustainable building technologies that will require specialized maintenance. Evaluation of the staffing positions necessary for long-term maintenance is needed. Completion of an asset management plan would further assist this process.
- **Submerged Underwater Resources.** The NPS Submerged Resources Center and World War II Valor in the Pacific National Monument, Pearl Harbor conduct and coordinate research to understand the nature and rate of natural processes affecting the deterioration of USS *Arizona* in Pearl Harbor. Initiated in 1982, research is designed to be multi-year, interdisciplinary, and cumulative, with each element contributing to minimize environmental hazard from fuel oil release and provide the basic research required to make informed management decisions for long-term preservation. Initially, the research was focused just on the USS *Arizona*. This work had been designed to serve as a model and have direct application to preservation and management of historical iron and steel vessels worldwide. As such, the scope of the USS *Arizona* research expanded to include work on Pacific War wrecks in Pearl Harbor, around Oahu, and for other park sites in the Pacific (War in the Pacific National Historical Park and American Memorial Park). The survey and documentation work predated the creation of the national monument. This sort of research methodology now includes the USS *Utah* and has been used on various airplane crash sites around Pearl Harbor, West Loch LSTs (e.g., landing ship, tank amphibious assault ships), the Japanese HA-19 Midget Submarine, and approximately 100 others sites. This research rationale is a “living document” that will continue to change as the research evolves and protected resource knowledge changes.





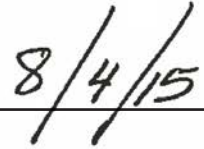
---

**Pacific West Region Foundation Document Recommendation  
World War II Valor in the Pacific National Monument**

August 2015

---

This Foundation Document has been prepared as a collaborative effort between park and regional staff and is recommended for approval by the Pacific West Regional Director.



---

RECOMMENDED

Rhonda Loh, Acting Superintendent, World War II Valor in the Pacific National Monument

Date



---

APPROVED

Martha J. Lee, Acting Regional Director, Pacific West Region

Date



As the nation's principal conservation agency, the Department of the Interior has responsibility for most of our nationally owned public lands and natural resources. This includes fostering sound use of our land and water resources; protecting our fish, wildlife, and biological diversity; preserving the environmental and cultural values of our national parks and historic places; and providing for the enjoyment of life through outdoor recreation. The department assesses our energy and mineral resources and works to ensure that their development is in the best interests of all our people by encouraging stewardship and citizen participation in their care. The department also has a major responsibility for American Indian reservation communities and for people who live in island territories under U.S. administration.

VALR 570/105748  
September 2015

Foundation Document • World War II Valor in the Pacific National Monument

