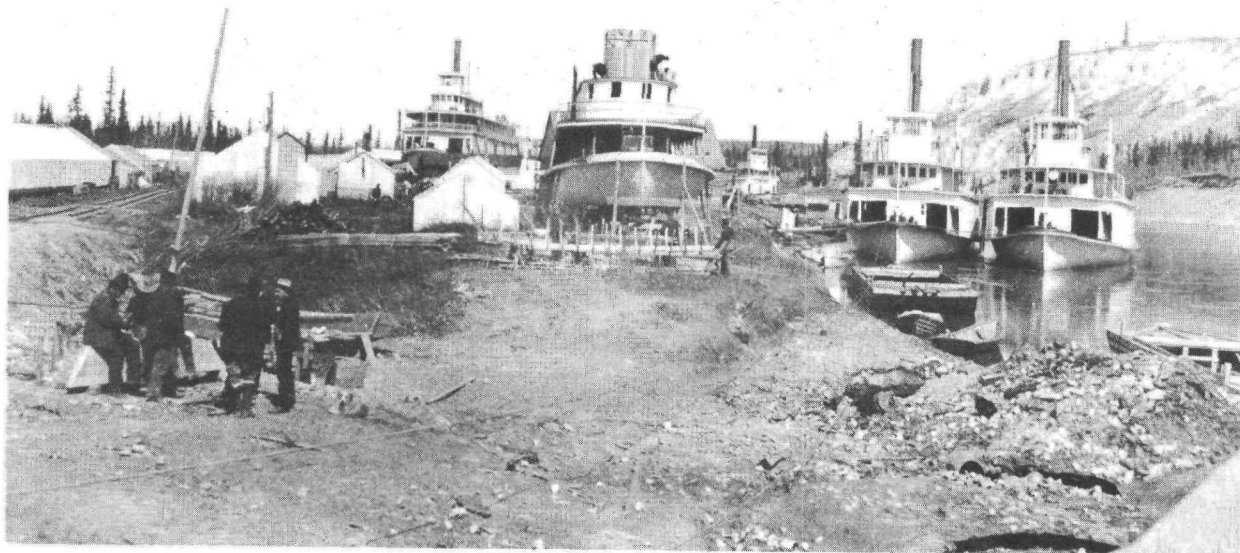




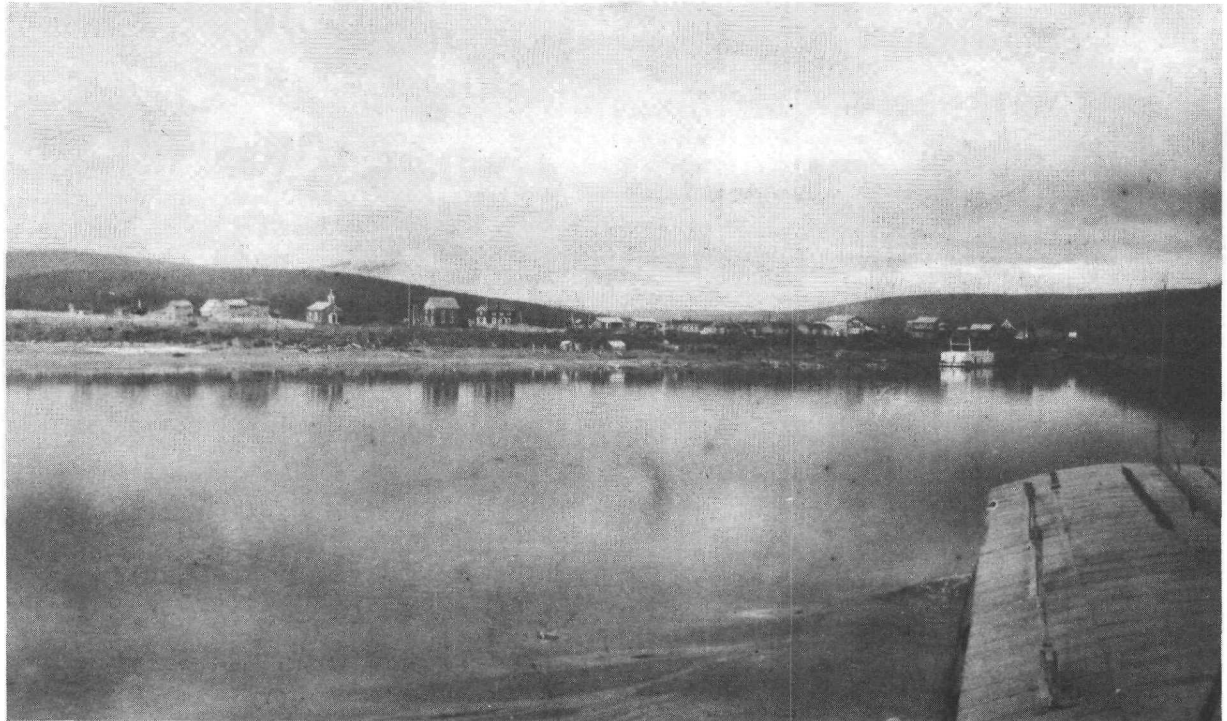
St. Michael and the harbor, with barge near shore. A.H. Brooks photo  
157 of 1898. USGS Historical Photo Library, Denver.



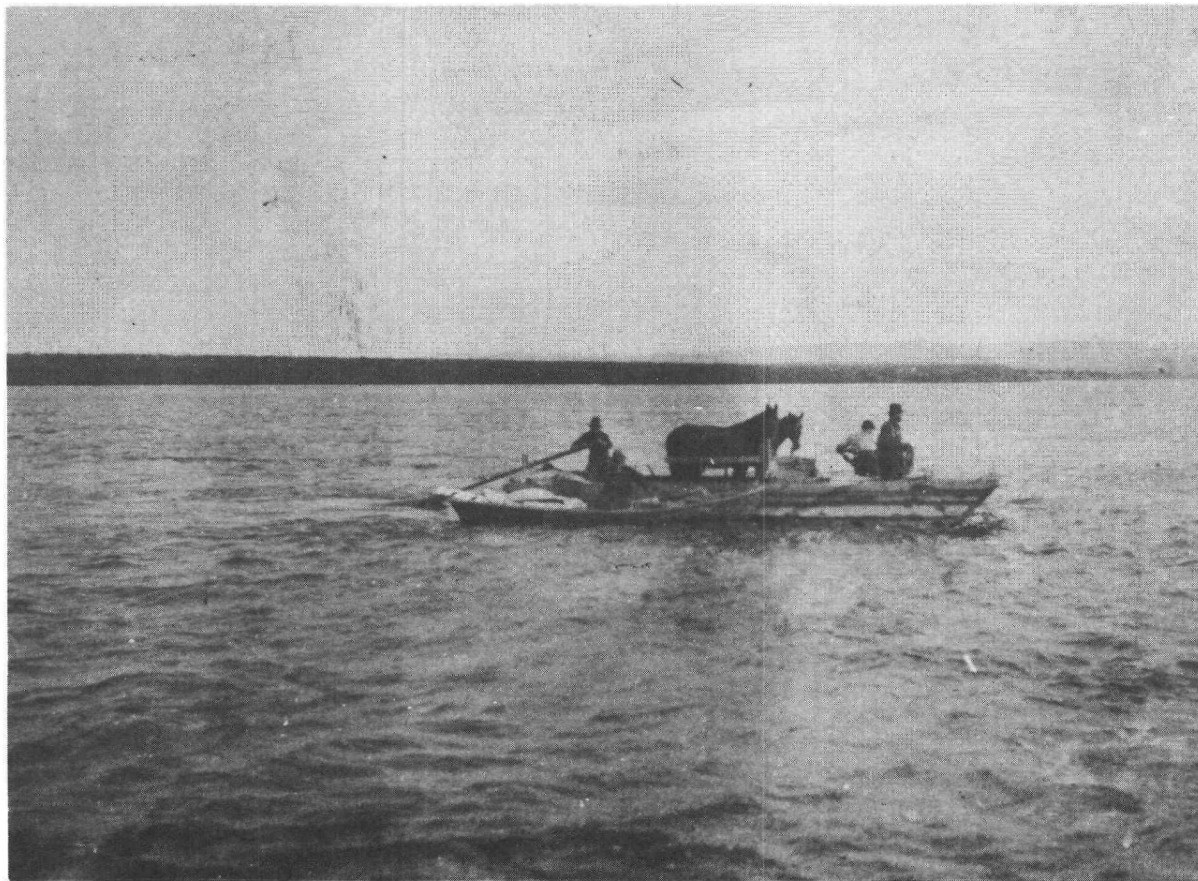
Riverboats on ways at St. Michael. J.B. Mertie photo 488 of 1916.  
USGS Historical Photo Library, Denver.



Building steamboats along river-front at White Horse, Yukon Territory.  
W.C. Mendenhall photo 137 of 1901. USGS Historical Photo  
Library, Denver.



Nulato on the Yukon River, from bow of steamer Sarah, looking across barge being pushed. A.G. Maddren photo 140 of 1909. USGS Historical Photo Library, Denver.



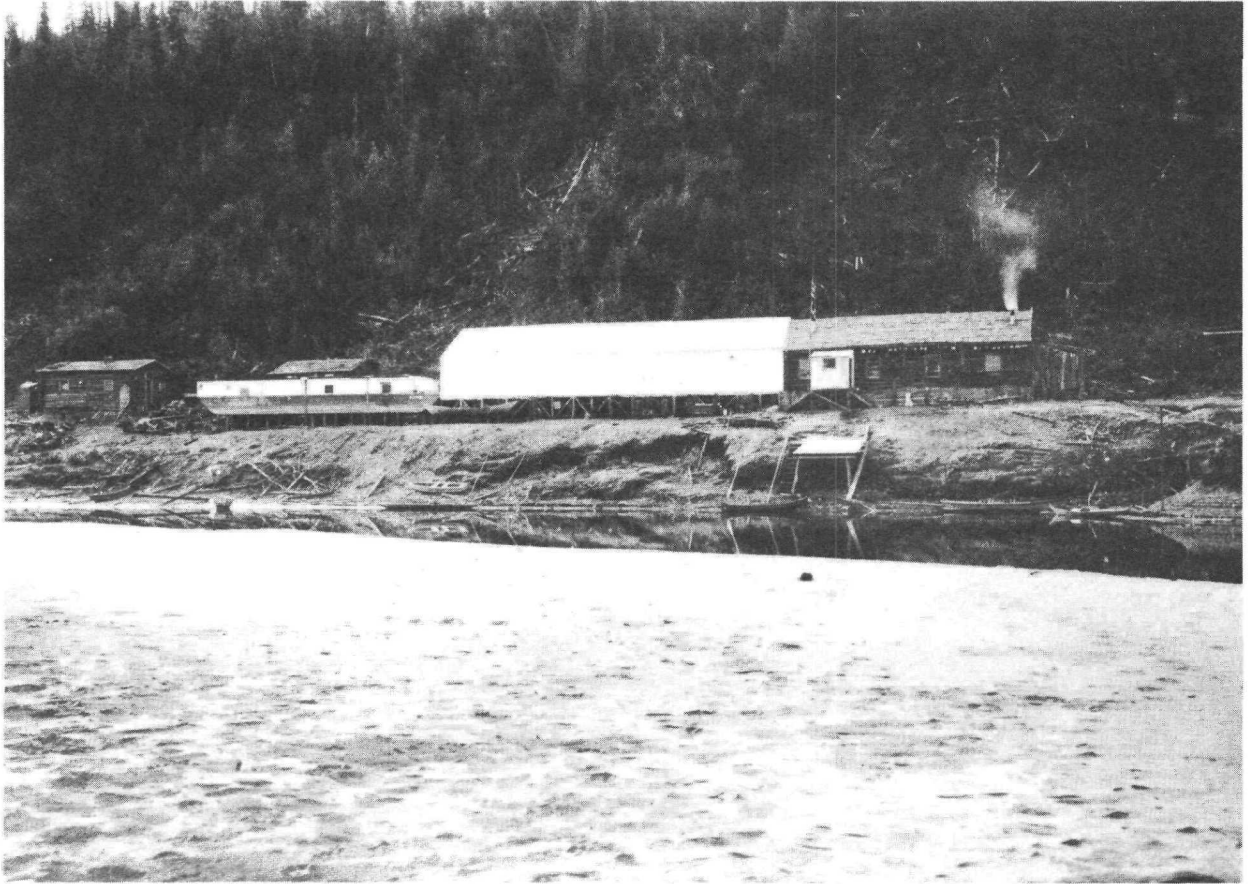
Prospectors with horses on raft approaching Dall River junction  
on the Yukon. W.C. Mendenhall photo 178 of 1901. USGS  
Historical Photo Library, Denver.



Steamer on the Yukon River at Weare (Tanana). A.H. Brooks photo 148  
of 1898. USGS Historical Photo Library, Denver.



Weare (Tanana) Trading Post on Yukon River. A.H. Brooks photo 145 of 1898. USGS Historical Photo Library, Denver.

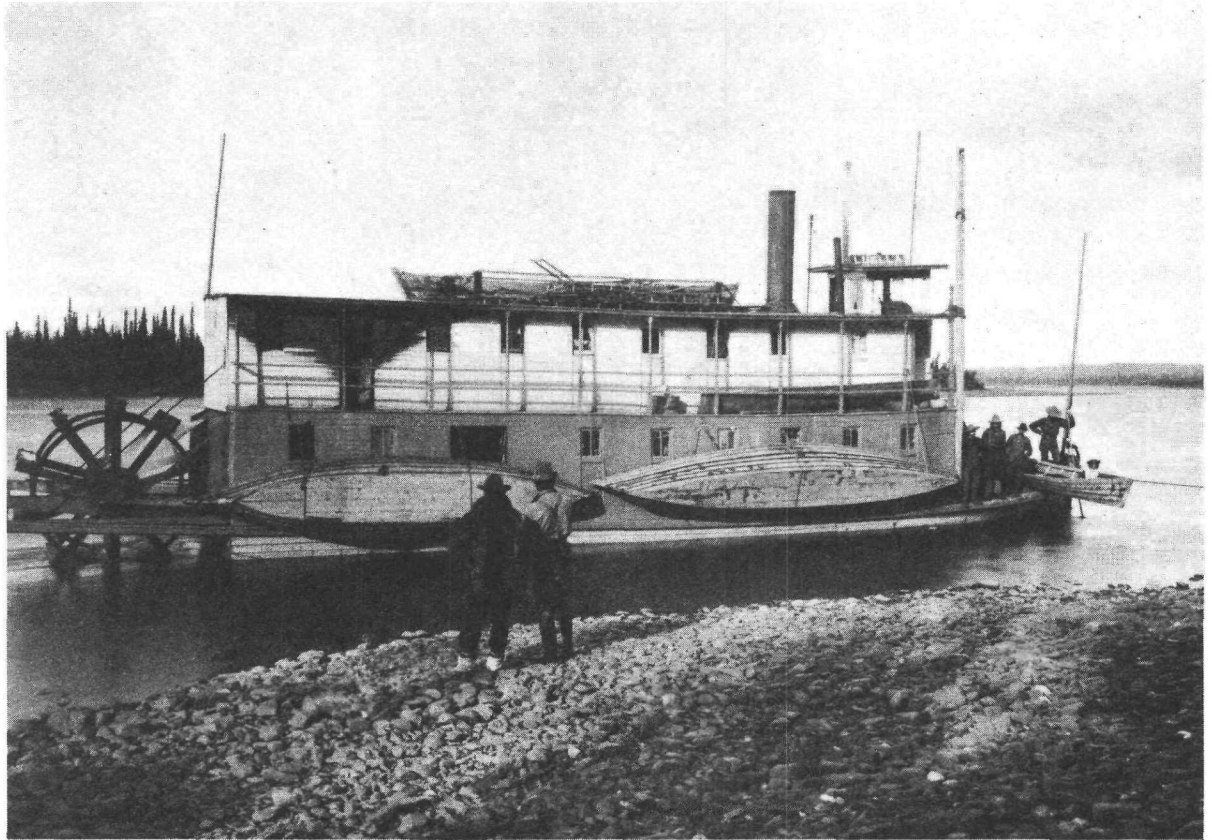


**Bergman on Koyukuk River. F.C. Schrader photo 453 of 1899. USGS  
Historical Photo Library, Denver.**

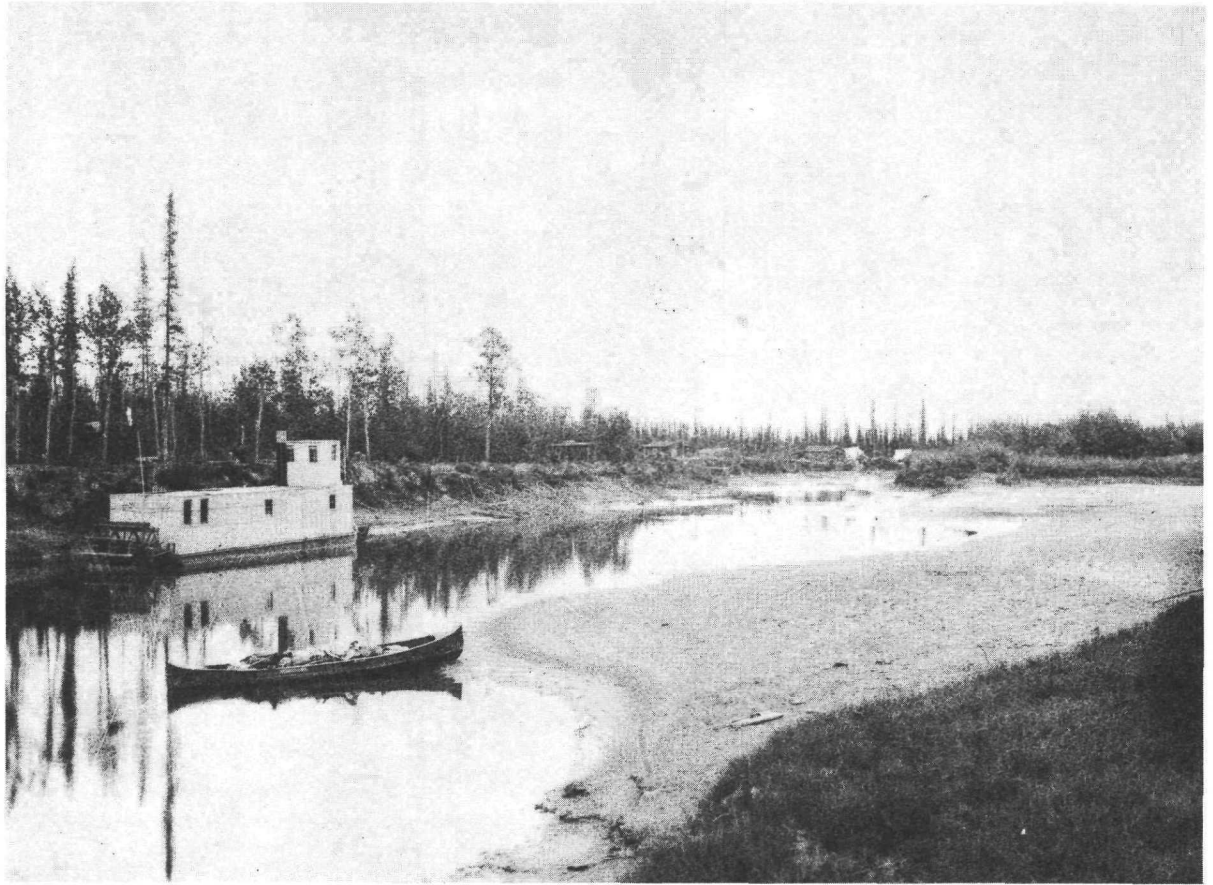




Interior of trading post at Gold Rush town of Bergman on Koyukuk River.  
F.C. Schrader photo 845 of 1899. USGS Historical Photo Library,  
Denver.



Steamer Luella on Koyukuk River above Bergman. F.C. Schrader photo  
449 of 1899. USGS Historical Photo Library, Denver.



Town of Peavy on Koyukuk River below Bettles; note small, shallow-draft steamboat used on upper river. F.C. Schrader photo 437 of 1899. USGS Historical Photo Library, Denver.



Town of Bettles on Koyukuk River; slope of Mt. Lookout rises to left.  
F.C. Schrader photo 808 of 1899. USGS Historical Photo Library,  
Denver.



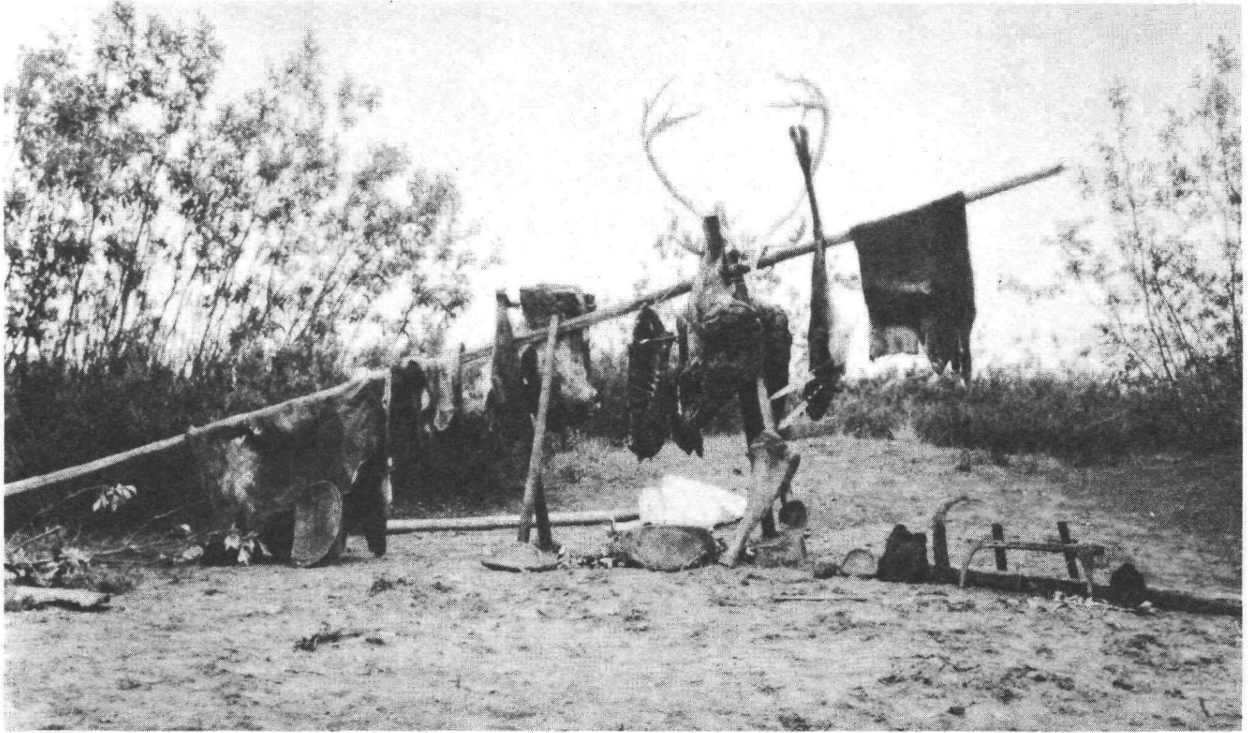
Miner's panning on Myrtle Creek in the Wiseman District, 1899. Note cleavage and attitude of gold-bearing schist. F.C. Shrader photo 402, USGS Historical Photo Library, Denver.



Native fish-drying camp near mouth of Alatna River. F.C. Schrader  
photo 447 of 1899. USGS Historical Photo Library, Denver.



View down Noatak River from hill overlooking Lucky Six Creek. P.S.  
Smith photo 592 of 1911. USGS Historical Photo Library, Denver.



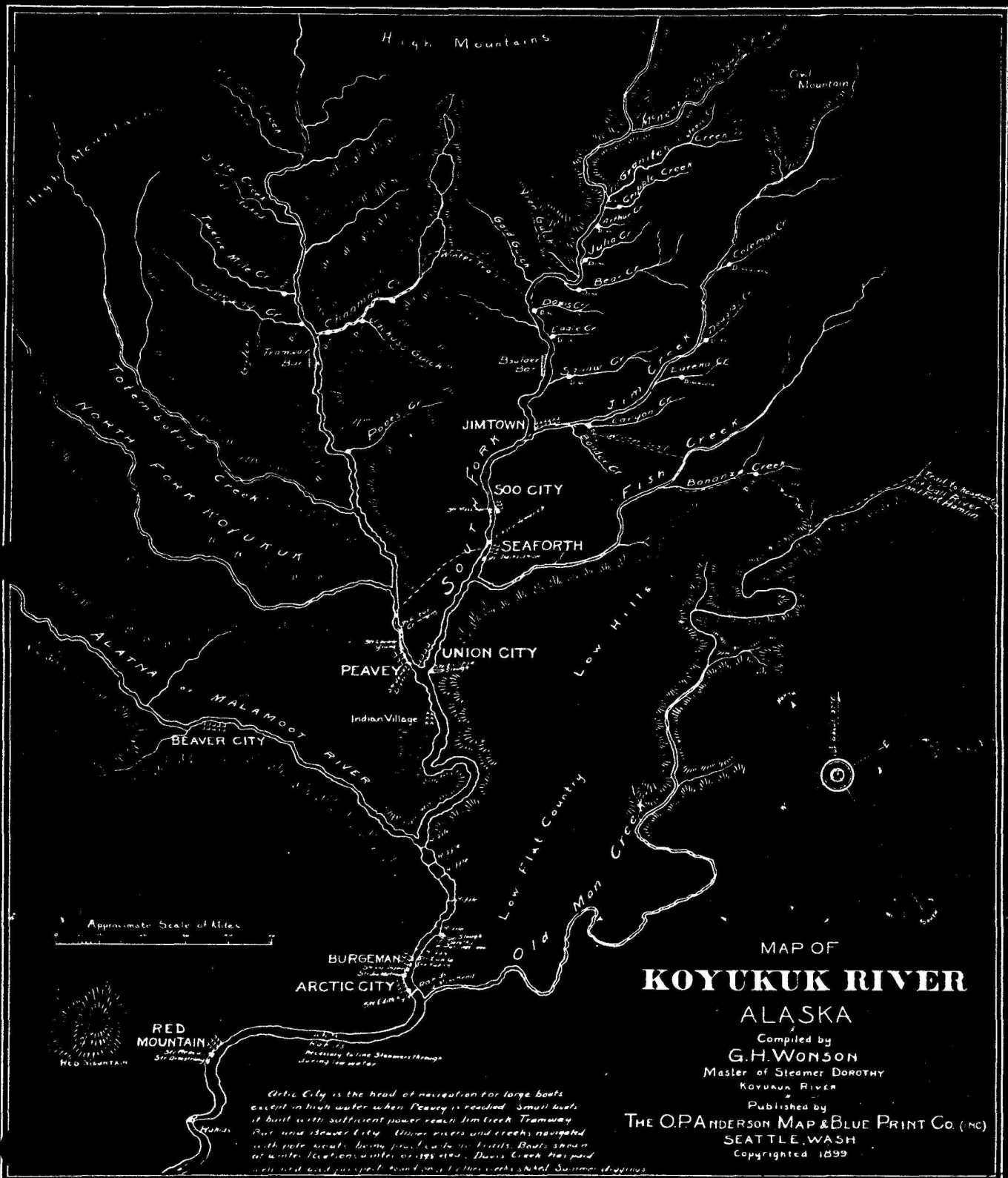
Caribou drying rack at Native camp on Noatak River. P.S. Smith photo  
771 of 1911. USGS Historical Photo Library, Denver.





**Mendenhall party pulling canoe through riffles on way to Kobuk River.  
W.C. Mendenhall photo 182 of 1901. USGS Historical Photo  
Library, Denver.**

An inaccurate guide map of 1899. Map 12025 of the Alaska Historical  
Maps Collection, Library of Congress.



MAP OF  
**KOYUKUK RIVER**  
 ALASKA

Compiled by  
**G. H. WILSON**  
 Master of Steamer DOROTHY  
 Koyukuk River

Published by  
**THE O. P. ANDERSON MAP & BLUE PRINT CO. (INC.)**  
 SEATTLE, WASH.  
 Copyrighted 1899

Approximate Scale of Miles  
 0 10 20 30 40



**RED MOUNTAIN**  
 36 Miles  
 570 feet

*Arctic City is the head of navigation for large boats except in high water when Peavey is reached. Small boats if built with sufficient power reach Jim Creek Tramway Port and Beaver City. Upper rivers and creeks navigated with pole boats being pushed by the trails. Boats shown at water location, water or logs used. Davis Creek has paid men and boat pushed to head of trail. This creek shall summer crossings*

Copyrighted March 1899 The O. P. Anderson Map & Blue Print Co. Inc. Seattle Wash.

This full-size section of the Alaska Road Commission general map of Alaska roads and trails in 1909 shows the locations of the many mining towns (most of them primitive camps) established during the 1898-99 rush to the Koyukuk. By the time this map was printed most of these sites were abandoned and in ruins. RG 126, Map 1, National Archives.

