

Steamer pushing barges upriver on the Yukon. J.B. Mertie photo 475 of 1916. USGS Historical Photo Library, Denver.



Teddy H. approaching Bettles with freight barges. Robert Marshall photo. Courtesy of the Bancroft Library, University of California, Berkeley.



Horse-drawn freight scow on Middle Fork, Koyukuk River, at Coldfoot, enroute from Bettles to Wiseman-Nolan mining camps. A.G. Maddren photo 19 of 1909. USGS Historical Photo Library, Denver.



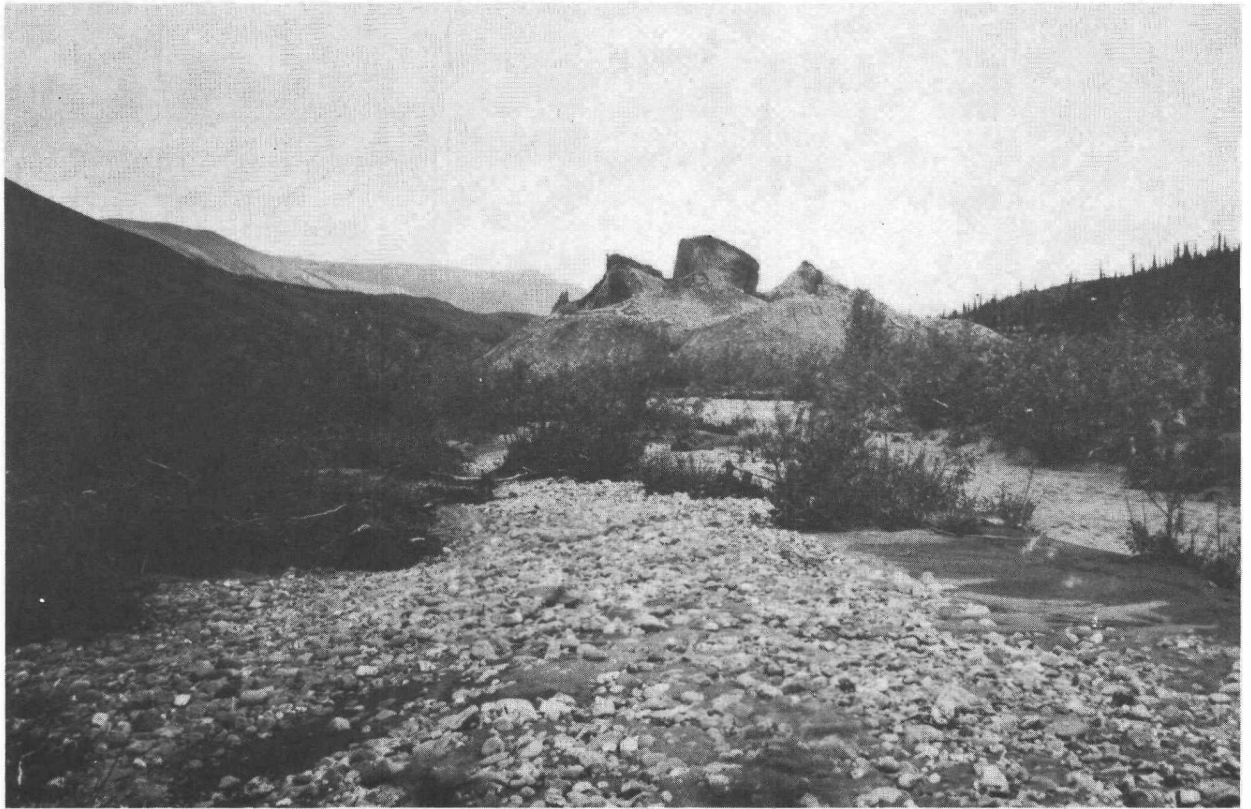
Hughes City on Koyukuk River. P.S. Smith photo 750 of 1911. USGS
Historical Photo Library, Denver.



Geologist at work with planetable on Koyukuk near Alatna. F.C.
Schrader photo 463 of 1899. USGS Historical Photo Library,
Denver.



Robert Camp of Gens de Large Indians near head of Robert Creek
on the portage to Koyukuk River. Natives from this camp
helped Schrader and his USGS party over the portage.
F.C. Schrader photo 335 of 1899. USGS Historical Photo
Library, Denver.



Remnant of John River Valley glacier rising 60 feet above valley floor.
F.C. Schrader photo 883 of 1901. USGS Historical Photo
Library, Denver.



USGS pack train on tributary of upper Kobuk River. H.M. Eakin photo
116 of 1910. USGS Historical Photo Library, Denver.



USGS party lining boat up Alatna River, approaching Alatna-Noatak portage. P.S. Smith photo 753 of 1911. USGS Historical Photo Library, Denver.



Mendenhall party dragging canoes through shallows of Helpmejack Creek,
near Alatna Portage. W.C. Mendenhall photo 215 of 1901.
USGS Historical Photo Library, Denver.



Sluicing gold placers on Myrtle Creek near Coldfoot. F.C. Schrader
photo 407 of 1899. USGS Historical Photo Library, Denver.

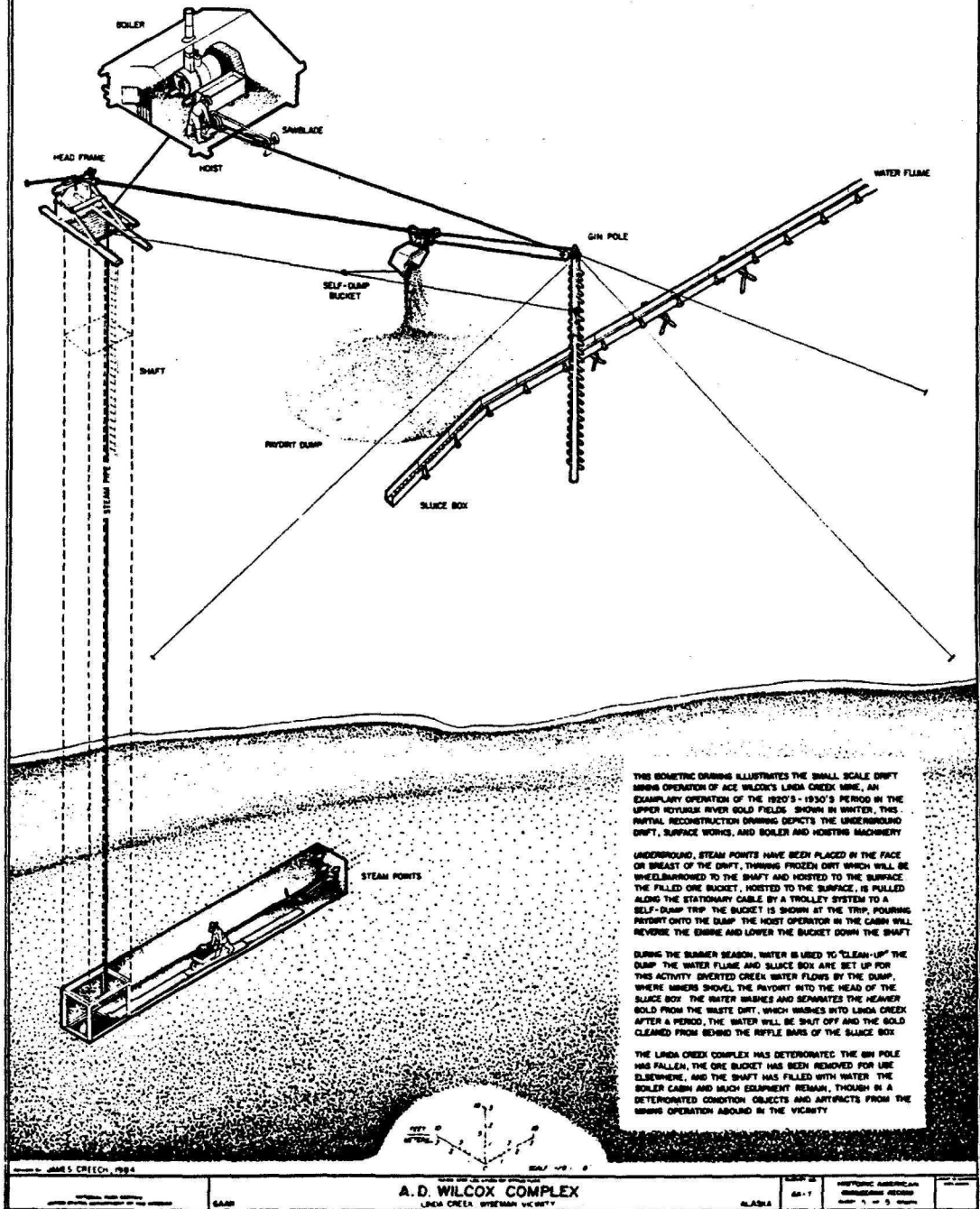


The Nolan Camp in its heyday showing boiler cabins, gin-poles, and dumps in operation. A.G. Maddren photo 37 of 1909. USGS Historical Photo Library, Denver.



A complete drift placer plant in operation at Nolan, showing miners' tents and cabins, left, gin-pole and dump, center, boiler cabin and stacked wood fuel, right, with water flume in background. A.G. Maddren photo 40 of 1909. USGS Historical Photo Library, Denver.

DRIFT MINING 1920 - 1930



ON MICROFILM

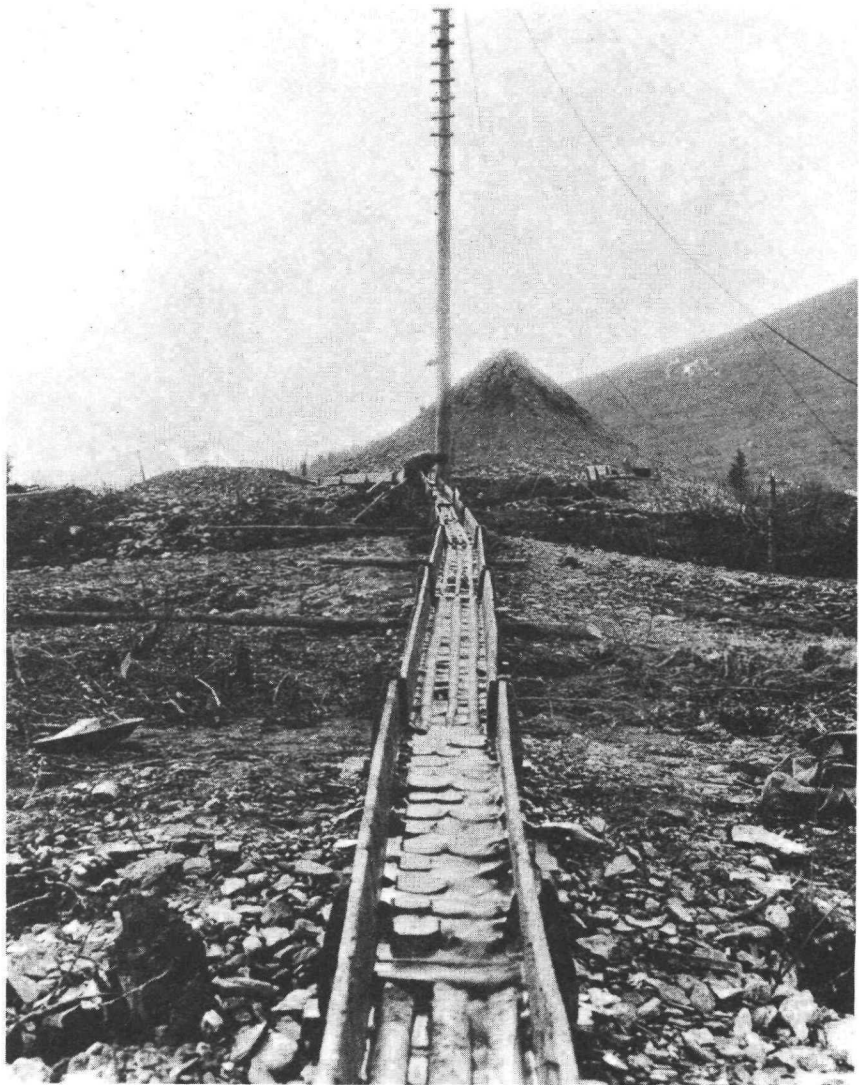
185/25001
1 of 1



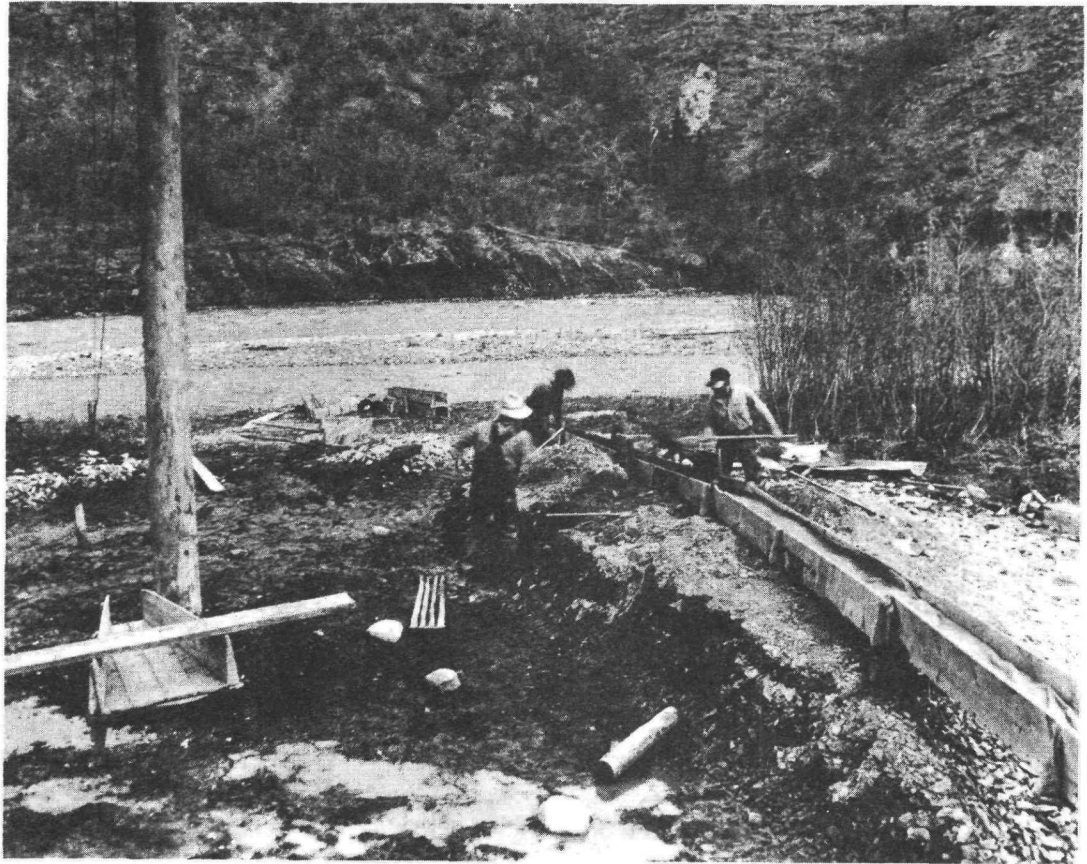
Nolan Creek drift mining plant, with Smith Creek Dome in background.
Robert Marshall photo. Courtesy of the Bancroft Library,
University of California. Berkeley.



August "Deep Hole" Tobin just before leaving Boston for the Gold Rush. Reproduced from a family photo loaned by Doris Bordine of Eagle River, Alaska, his grand-daughter.



Sluice boxes and gin-pole at Vern Watts' claims on Hammond River.
Robert Marshall photo. Courtesy of the Bancroft Library,
University of California, Berkeley.



Shoveling in at Vern Watts' claims on Hammond River. Robert Marshall photo. Courtesy of the Bancroft Library, University of California, Berkeley.



The settlement of Beaver on the Yukon River, entrepot to the Chandalar District. A.G. Maddren photo 149 of 1910. USGS Historical Photo Library, Denver.



Caro on the Chandalar River at Flat Creek. J.B. Mertie photo 930 of 1924. USGS Historical Photo Library, Denver.



ARC-built tram across Chandalar River at Caro. J.B. Mertie photo 1026
of 1924. USGS Historical Photo Library, Denver.



Stone cabin on Big Creek headwaters, Chandalar District. J.B. Mertie
photo 947 of 1924. USGS Historical Photo Library, Denver.



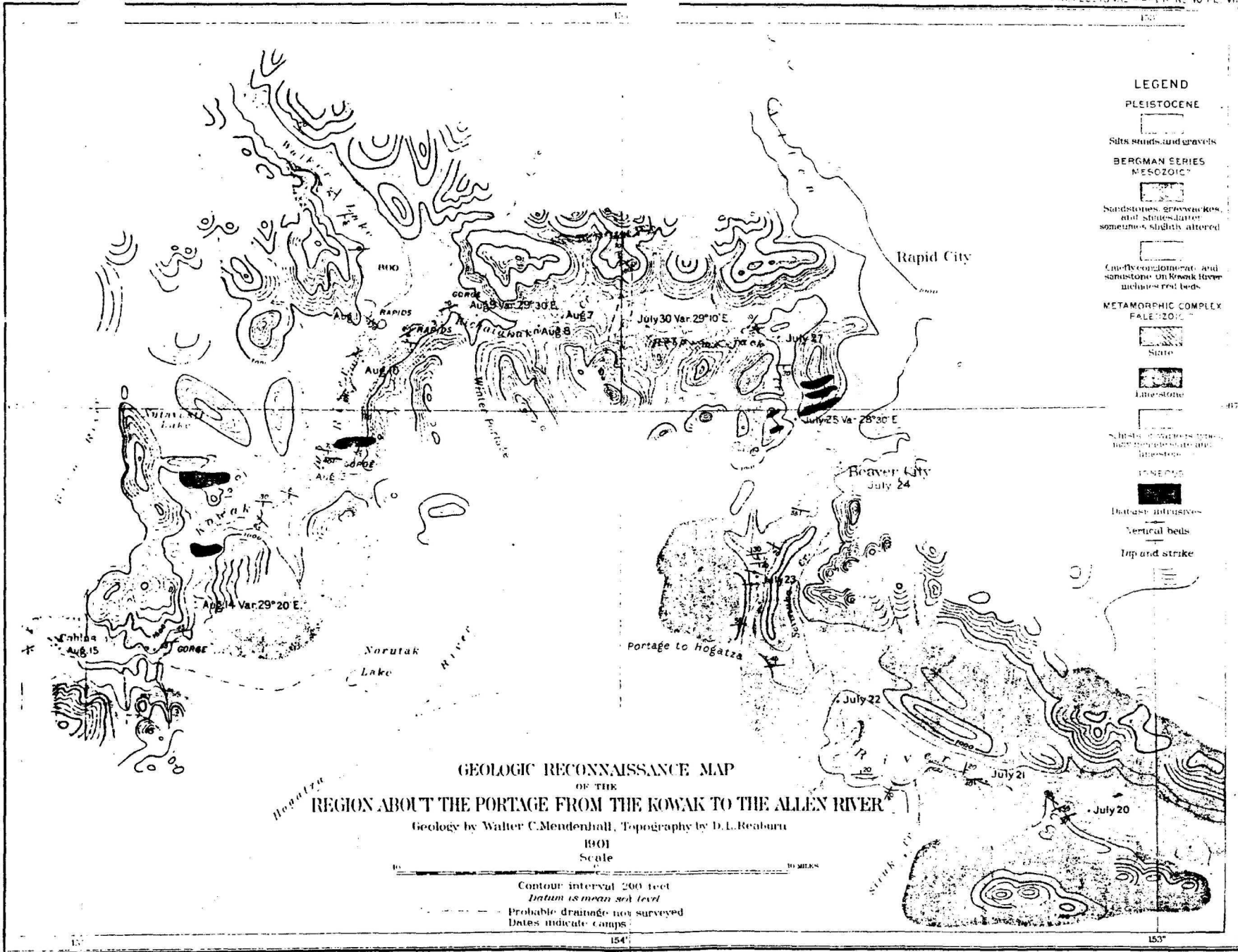
Gin-pole and self-dumping bucket at Big Creek mining operation, Chandalar District. J.B. Mertie photo 948 of 1924. USGS Historical Photo Library, Denver.



Creecy's open-cut operation on Big Squaw Creek, Chandalar District, showing flume and miners. J.B. Mertie photo 949 of 1924. USGS Historical Photo Library, Denver.



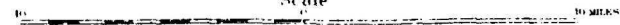
Ruby Creek Mine in Cosmos Hills near Shungnak of Kobuk River. P.S.
Smith photo 522 of 1910. USGS Historical Photo Library,
Denver.



GEOLOGIC RECONNAISSANCE MAP
 OF THE
REGION ABOUT THE PORTAGE FROM THE KOWAK TO THE ALLEN RIVER

Geology by Walter C. Mendenhall, Topography by D.L. Reaburn

1901
 Scale



Contour interval 200 feet
 Datum is mean sea level
 Probable drainage not surveyed
 Dates indicate camps

LEGEND

PLEISTOCENE

Silt, sand, and gravel

BERGMAN SERIES
MESOZOIC

Sandstone, graywacke, and shale, latter sometimes slightly altered

Crinoid stems and sandstone on Kowak (these include red beds)

METAMORPHIC COMPLEX
FALEZONIC

Slate

Limestone

Schistose granites, gneisses, and amphibolites

IGNEOUS

Diabase intrusives

Vertical beds

Dip and strike

This reduced section of the Alaska Road Commission general map of Alaska roads and trails in 1916 shows the tenuous pack trail connections between the Yukon River supply artery and the Koyukuk Mining District (Tanana-Fort Gibbon to Arctic City and on to Coldfoot). The Yukon River to Chandalar route begins at Beaver and goes via Caro. RG 126, Map 5, National Archives.



Koyukuk District

Chandalar District

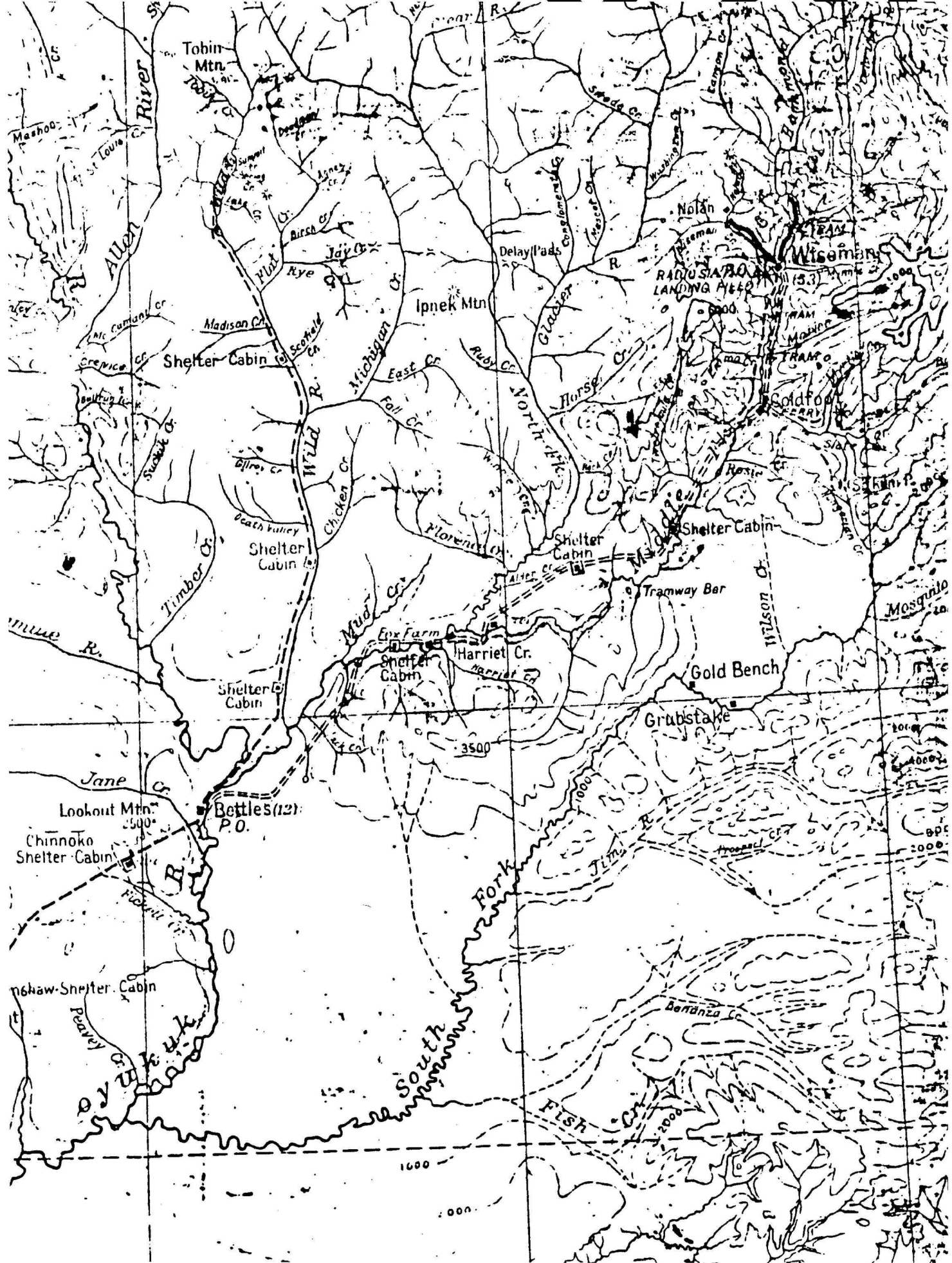
ARCTIC

CIRCLE

Beaver

FAIRBANKS

This full-size section of the Alaska Road Commission's Koyukuk District map of 1923 shows the pack trails (single dash) and sledge trails (double dash) in the Bettles to Wiseman and Wild Lake areas. Note the many ARC built shelter cabins, the tram and ferry connections across Middle Fork, and the importance of Wiseman, with its post office, wireless station, and landing field. The two spur wagon roads out of Wiseman serve the Nolan and Hammond River mining camps. RG 126, Map 21, National Archives.



This reduced section of the Alaska Road Commission's Fairbanks District map of 1924 shows the extended trail system from Beaver on the Yukon River to the Big Creek and Little Squaw Creek mining centers in the Chandalar District. Trail connections between the Wiseman-Coldfoot area and the Chandalar mines existed at this time, but were not maintained by ARC. Note the rapid adoption of the airplane even by 1924, with landing fields (*) at Bettles River, Gold Creek, Wiseman, Myrtle Creek, and Beaver. RG 126, Map 22, National Archives.

