



The Gates of the Arctic from Ernie Creek Valley. John Kauffmann photo.



Frigid Crags, one of the Gates. John Kauffmann photo.



Under Doonerak Mountain on the Koyukuk's North Fork. John Kauffmann photo.



Arrigetch Peaks. Robert Belous photo.



Mount Igikpak. Robert Belous photo.



Takahula Lake. Robert Belous photo.



Kobuk River. John Kauffmann photo.

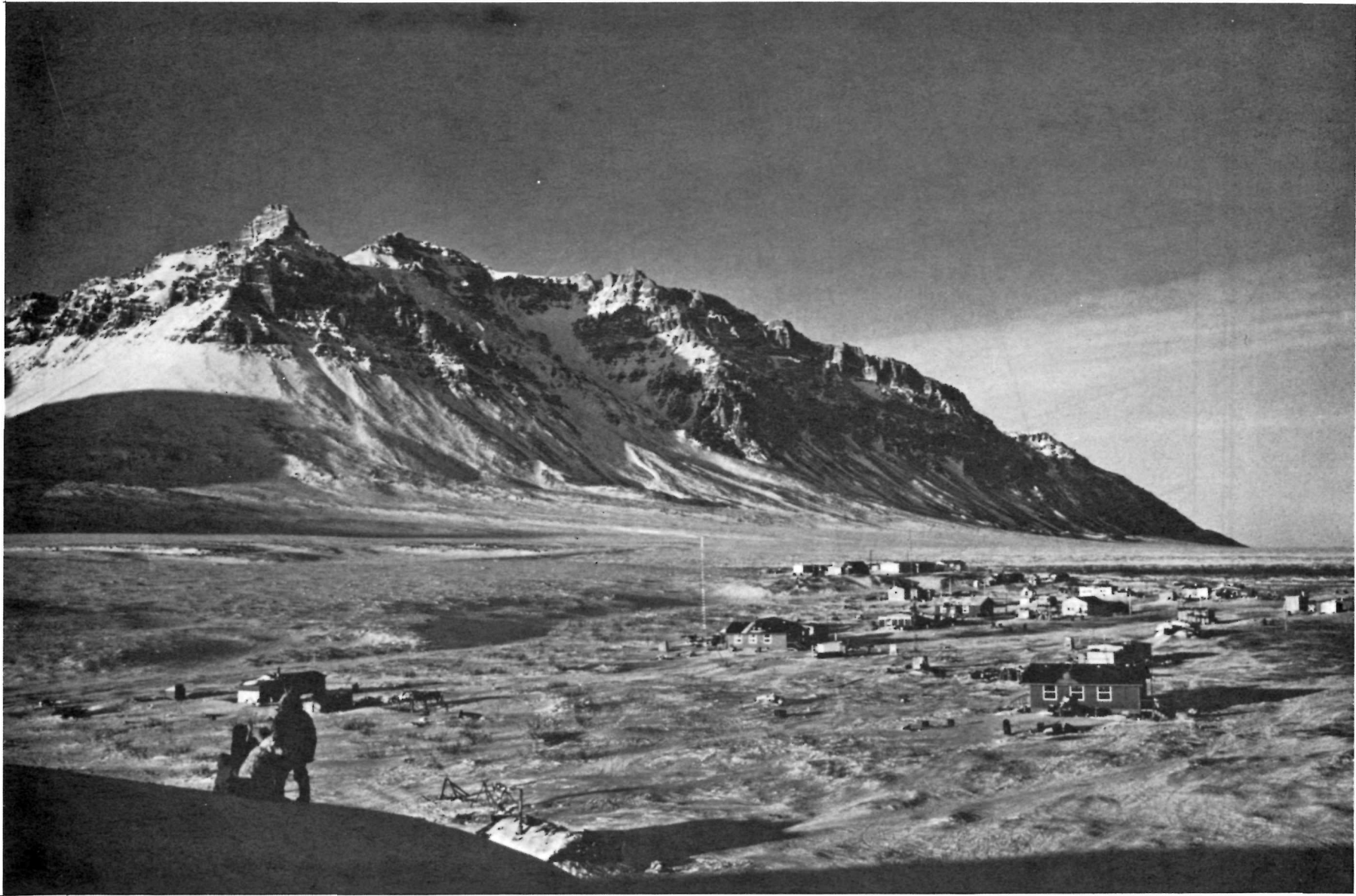


Narvak Lake. John Kauffmann photo.

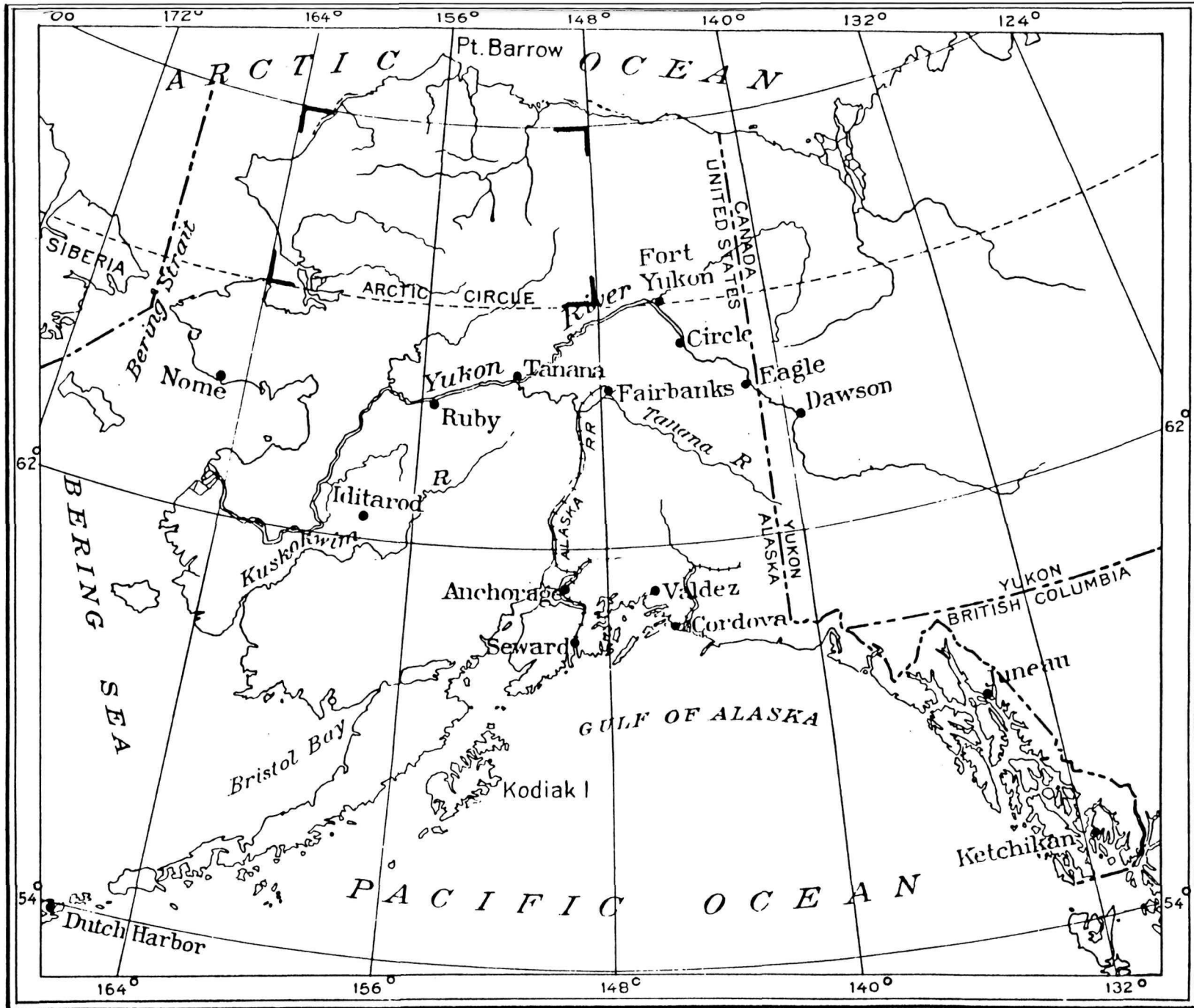




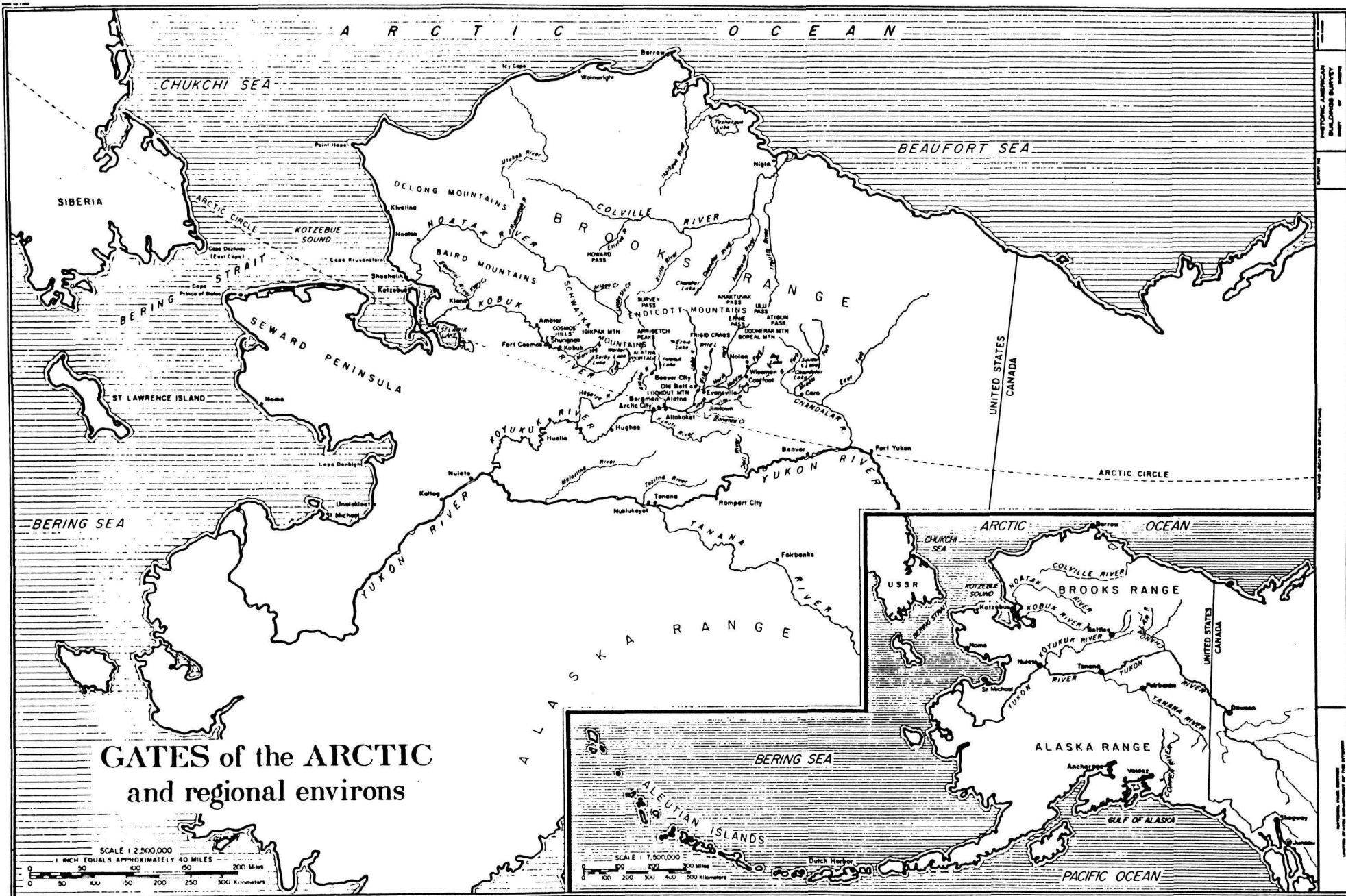
Killik River. John Kauffmann photo.



Anaktuvuk Pass Village. John Kauffmann photo.



Early USGS Alaska base map, showing Gates of the Arctic region.  
 (Source: USGS Technical Data Branch, Menlo Park, CA.)



HISTORIC AMERICAN  
BUILDINGS SURVEY  
NO. 100

THE NATIONAL SOCIETY OF PROFESSIONAL ARCHITECTS

UNIVERSITY MICROFILMS INTERNATIONAL

The Gates of the Arctic region from Operational Navigation Chart C-9, Defense Mapping Agency, U.S Air Force. For reference, Bettles is just to the right of lower center. This chart gives some idea of the intricate mountain terrain and drainage patterns of the region, once described by a person who flew over it regularly as "a file under magnification."

