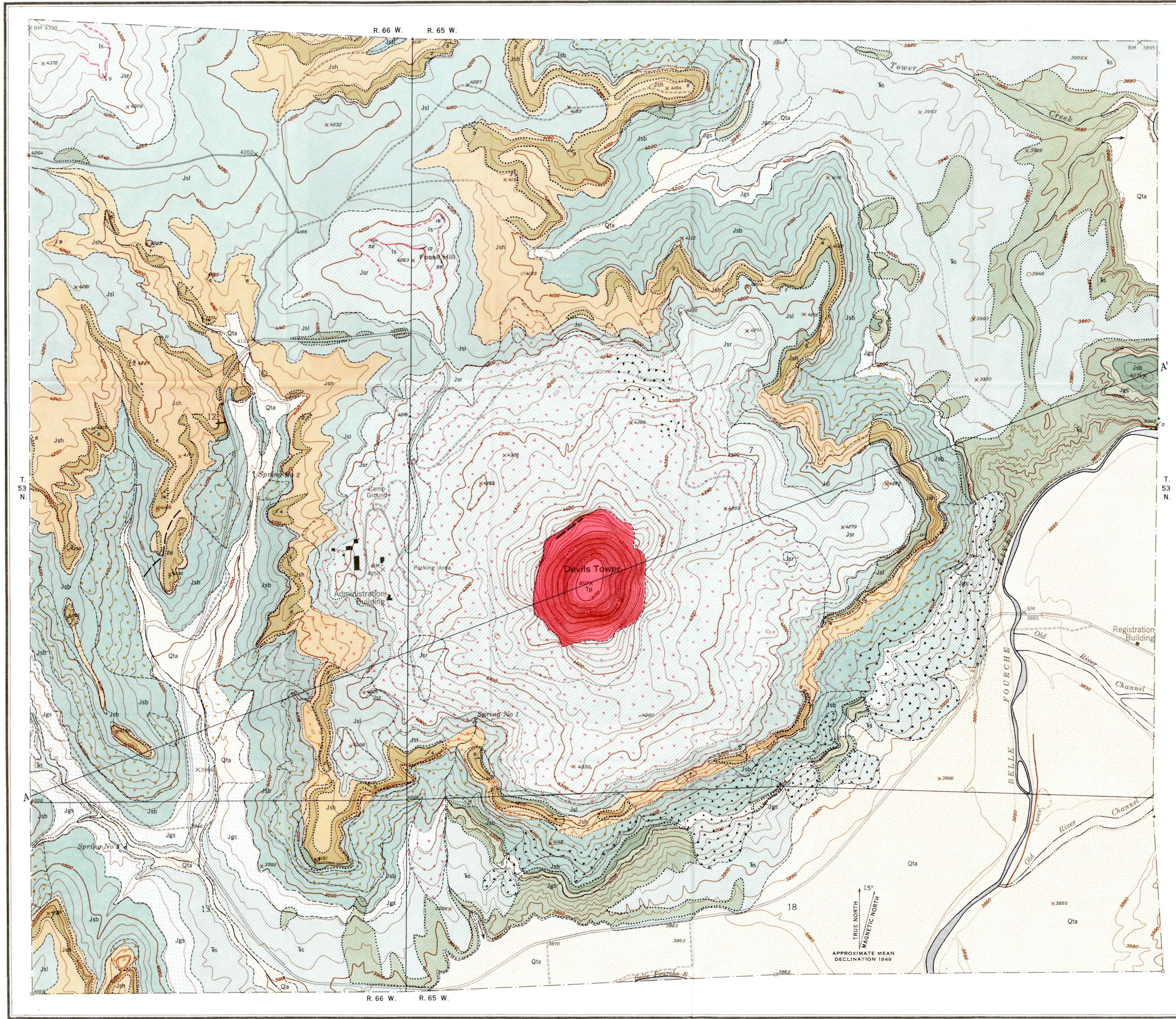
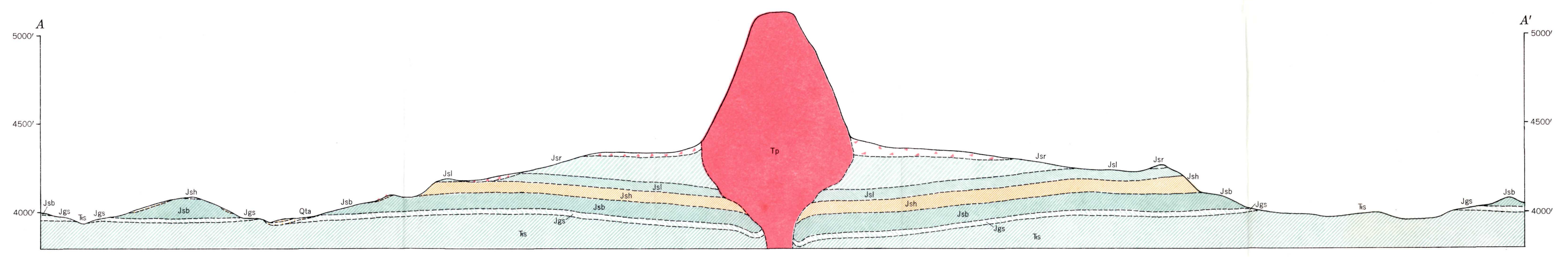


- EXPLANATION**
- Qtz
Stream terrace deposits and alluvium, undifferentiated
 - Tp
Phonolite porphyry
Dark-gray to black rock with conspicuous crystals of white feldspar
 - Jsr
Sundance formation
Jsr, Redwater shale member. Gray-green shale with thin sandstones in lower part, fossiliferous gray limestones in upper part. Forms slopes. ls, limestone beds.
Jsl, Lak member. Yellow poorly cemented fine-grained sandstone and siltstone. Forms gentle slopes.
Jsh, Hulett sandstone member. Yellow massive sandstone. Forms steep cliffs.
Jsb, Stockade Beaver shale member. Gray-green shale with thin fine-grained sandstones. Forms slopes
 - Jgs
UNCONFORMITY
Gypsum Spring formation
White massive gypsum with interbedded red mudstone
 - Tss
UNCONFORMITY
Spearfish formation
Red siltstone and sandstone with interbedded red shale
 - Talus and landslide material
Black pattern where composed of mixed rock types. Where composed chiefly of one rock type, color is same as rock type contained
 - Contact, dashed where approximately located
 - Indefinite contact
Contacts indefinitely located and contacts of surficial deposits
 - Concealed contact
 - Fault, dashed where approximately located
 - Strike and dip of beds
 - Outcrop



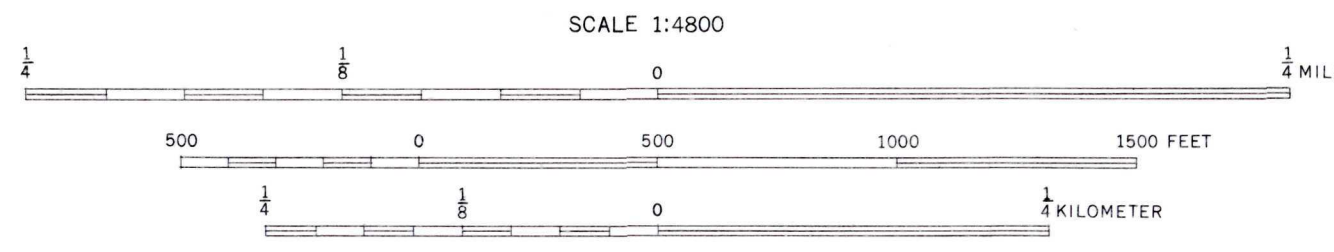
Base from U. S. Geological Survey special topographic map, 1949

Geology by Charles S. Robinson, 1954



INTERIOR—GEOLOGICAL SURVEY, WASHINGTON, D. C. M R-1518—1956

GEOLOGIC MAP AND SECTION OF DEVILS TOWER NATIONAL MONUMENT, WYOMING



CONTOUR INTERVAL 20 FEET
DOTTED LINES REPRESENT HALF INTERVAL CONTOUR
DATUM IS MEAN SEA LEVEL