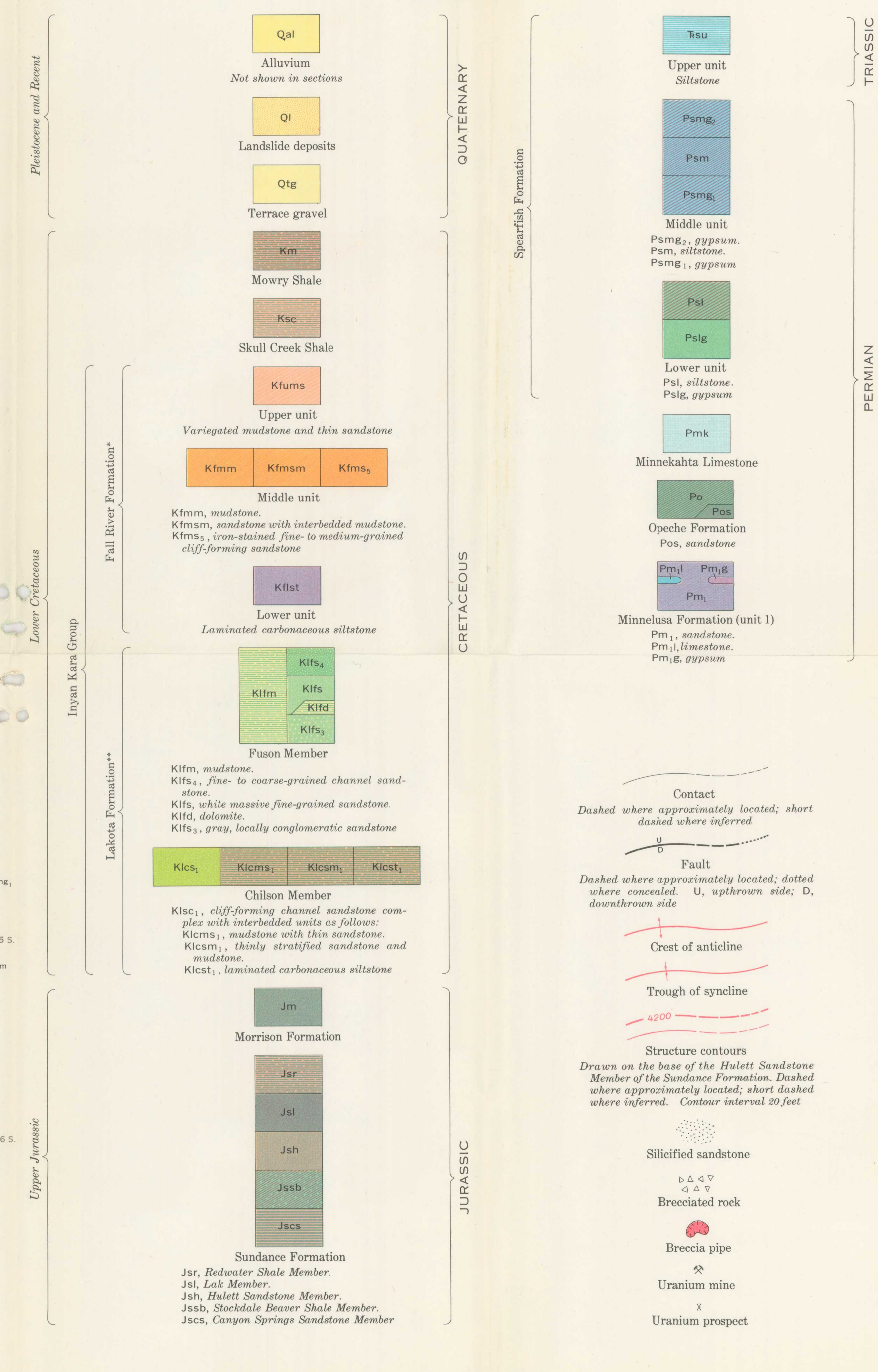
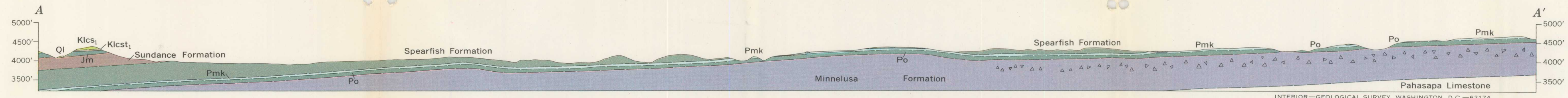


EXPLANATION

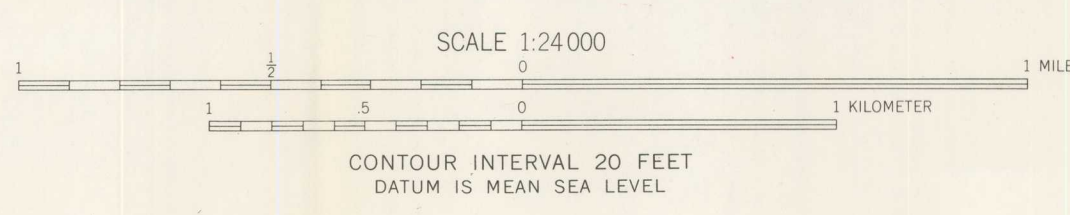


Base map by Topographic Division
U.S. Geological Survey, 1954

Geology by W. A. Braddock, George Carter,
and T. E. Bridge, 1955-56



GEOLOGIC MAP AND SECTION OF THE JEWEL CAVE SW QUADRANGLE, SOUTH DAKOTA



INTERIOR—GEOLOGICAL SURVEY, WASHINGTON, D. C.—62174