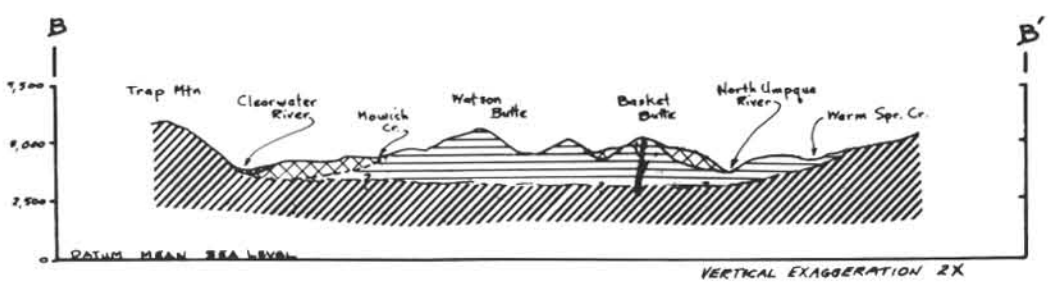
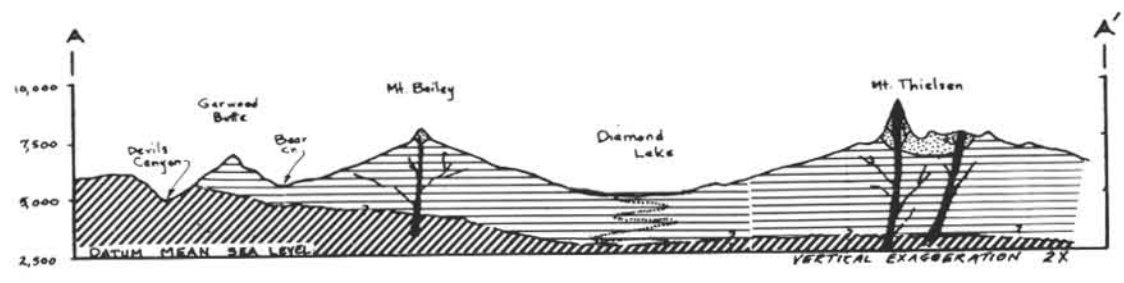


CRATER LAKE NATIONAL PARK

EXPLANATION

- boundary of Diamond Lake Ranger District
- streams
- springs
- geologic contacts
- boundary between lavas from different High Cascade volcanoes
- isopach lines showing thickness of pumice fall
- High Cascade lavas
- Western Cascade lavas
- intracanyon basalts
- glowing avalanche deposits
- igneous plugs
- cinder cones
- lava cones



RECONNAISSANCE GEOLOGIC MAP  
AND  
GEOLOGIC CROSS SECTIONS  
OF THE  
DIAMOND LAKE AREA,  
UMPQUA NATIONAL FOREST  
OREGON

GEOLOGY AFTER H. WILLIAMS, 1933 and 1942,  
WITH ADDITIONS AND MODIFICATIONS BY  
W. B. PURDOM, 1963