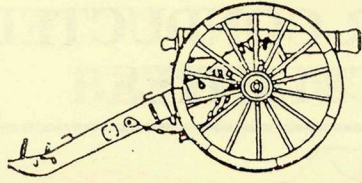


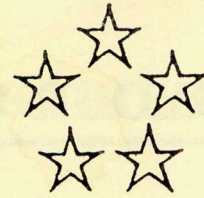
Gettysburg

National Military Park



Eisenhower

National Historic Site



PROGRAMS AND ACTIVITIES

SUMMER 1993



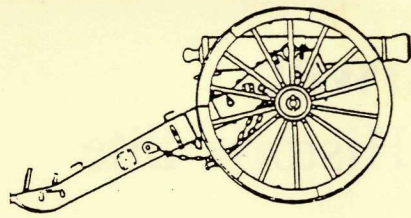
A Word from the Superintendent

Welcome to Gettysburg National Military Park and Eisenhower National Historic Site. We hope that this guide will help you take advantage of the many activities scheduled this summer. There are tours and battle walks on the battlefield, the Electric Map orientation program and the Museum of the Civil War in the Visitor Center, and a brand

new Cyclorama sound and light program featuring Richard Dreyfuss. The presidential retreat and retirement home of Dwight and Mamie Eisenhower features ranger programs and a house and grounds tour.

The National Park Service is charged with preserving these resources and

making them available for your enjoyment. Each activity, from maintaining the memorial landscape to conducting tours, is designed both to preserve your heritage and to help you understand and appreciate it. We hope your visit will be a pleasant, safe, and informative one.



SUMMER ACTIVITIES JUNE 19 – AUGUST 14

Gettysburg National Military Park

RANGER CONDUCTED ACTIVITIES



WALKING TOURS

Offered daily. Check at an information desk for schedule. The walks examine all three days of the battle and its aftermath. (Free)

*** THE FIRST DAY AT GETTYSBURG**

This 45 minute program focuses on the Gettysburg Campaign and the first day of the battle. Meet at the Eternal Light Peace Memorial.

*** DAY TWO: THE PEACH ORCHARD**

A 45 minute walk examines the Confederate assault on July 2. Meet at the Peach Orchard.

*** THE HIGH WATER MARK**

This 1/4 mile, 45 minute walk explains the outcome of the battle and its impact. Meet at the Cyclorama Center.

*** THE NATIONAL CEMETERY**

A 20 minute walk through the Cemetery explores the cost and significance of the battle. Meet at the Rostrum near the Cemetery entrance.

*** LIVING HISTORY**

Step back in time with interpreters who tell the story of Gettysburg through the experiences of people who were there. Walks begin at the Cyclorama Center and Cemetery entrance.

BATTLE WALKS

These two hour walks offer detailed explanations of the battle. A different walk is presented each day. Check at the information desks for schedule and directions. (Free)

*** THE OPENING CLASH**

Explore McPherson Ridge where the battle began.

*** VALLEY OF DEATH**

Little Round Top, Devil's Den, and the Wheatfield. Examine the 2nd day of fighting to see who gained the advantage.

*** PICKETT'S CHARGE**

Follow the route of the famous Confederate assault of the 3rd day and learn what it was like to face the guns on Cemetery Ridge.

*** RANGER SPECIAL**

Join a Ranger to examine other famous areas of action that occurred during the battle.

Eisenhower National Historic Site

The farm and house is the only home General and Mrs. Dwight D. Eisenhower ever owned. Looking forward to retirement, in 1950 they purchased this farm which was used as a "temporary White House" throughout his presidency. The Eisenhowers finally retired here in 1961.

VISITING THE SITE

Open 8:30 a.m. - 4:15 p.m. To visit the Eisenhower farm begin at the Eisenhower Tour Center located at the Gettysburg NMP Visitor Center/Electric Map building. Entrance to the farm is by shuttle bus only. Tickets are sold on a first-come, first-served basis for the next available tour. (Fee)

RANGER CONDUCTED PROGRAMS

Offered daily. Meet at the site's Reception Center. Check at information desk for topics and times. (Free)

*** EXPLORING EISENHOWER**

Explore the life and career of this extraordinary soldier/statesman during this 20 minute program.

*** FIVE-STAR FARMER**

Eisenhower took great pride in his black-Angus cattle operation and farm. Learn more about this aspect of the site during this 20 minute program.

CAMPFIRE PROGRAMS

Gather in the woods where Confederate soldiers sat around their campfires. Rangers present a different program every evening. Presented at 8:30 p.m., at the amphitheater located on West Confederate Avenue. Handicapped accessible. (Free)



ACTIVITIES

*** EISENHOWER FILM**

A free 10 minute film on Eisenhower's life and career is shown on a regular basis at the Eisenhower Tour Center.

*** TOUR OF THE HOUSE AND GROUNDS**

Once at the site, a self-guided walking tour covers the grounds and house itself. Rangers present a short orientation in the house and are available to answer questions.

*** FARM WALKING TOUR**

This self guided walking tour explores the Eisenhower farm and Angus cattle operation located just south of the main house.

*** THE SKEET RANGE**

Just a short walk from the Reception Center, an exhibit explains Eisenhower's use of the range.

*** WORLD WAR II EXHIBIT**

A display on Eisenhower's lieutenants, including artifacts and war memorabilia, is on display at the Reception Center at the farm.

PLANNING YOUR VISIT

Please check at the park information desks for exact time and location of guided walks and talks. Adjustments in schedules are sometimes made.

ATTRACTIONS

*** GETTYSBURG MUSEUM OF THE CIVIL WAR AND VISITOR CENTER**

Open 8:00 - 6:00. Extensive collection of artifacts and exhibits, information station and Electric Map program. (Free)

*** ELECTRIC MAP**

Orientation program which re-creates the battle on a large-scale relief map. This 30 minute program is an excellent way to begin your visit. (Fee)

*** CYCLORAMA PROGRAM**

Open 9:00 - 5:00. A colossal canvas painting surrounds the viewers, placing them in the middle of "Pickett's Charge." A new, state-of-the art, 20-minute sound and light program brings the painting to life. (Fee)

*** "Gettysburg 1863"**

A 20 minute film which describes the battle and aftermath, is shown throughout the day at the Cyclorama Center. (Free)

*** THE GETTYSBURG ADDRESS**

The first draft of Abraham Lincoln's address is displayed at the Cyclorama Center through Labor Day.

*** AUTO TOUR**

An 18 mile self-guiding tour of the battlefield begins at the Visitor Center. Tour maps are available at all information desks.

*** LICENSED BATTLEFIELD GUIDES**

Individuals tested and licensed by the park conduct personalized two-hour tours of the battlefield in your vehicle. Guides can be hired at the Visitor Center on a first-come first-served basis. (Fee) If you plan to hire a Guide, make arrangements early in the day.



Printed on Recycled Paper

SPECIAL EVENTS

* **CIVIL WAR ART EXHIBIT**
"Gettysburg" features over 50 artworks by Mort Kunstler, one of America's foremost historical artists. This exhibition will be displayed at the Cyclorama Center June 26 through October 17.

* **130TH ANNIVERSARY BATTLE WALKS** - Ranger led walks explain the three day battle as it progressed.

July 1 The Battle Opens, 10:00 a.m. West End Guide Station, Rt. 30 West

July 1 Outflanked and Outfought: The Union 11th Corps on July 1st. 3:00 p.m., Barlow Knoll.

July 2 The Struggle for Little Round Top 10:00 a.m. Meet at the intersection of Sedgwick Ave. and Wheatfield Road.

July 2 Assault on East Cemetery Hill, 3:00 p.m. Rostrum at Taneytown Road, Cemetery Entrance.

July 3 East Cavalry Field, 10:00 a.m. Check at information desk for details.

July 3 The Advance and Repulse of Pickett's Charge, 3:00 p.m., Virginia Memorial or Cyclorama. Check at information desk for details.

* **LIVING HISTORY ENCAMPMENTS**
Programs and encampments are held at various areas throughout the park. Check at information desk for times and locations.
June 12-13, 26-27, July 24-25, August 7-8, 21-22, and September 4-5.

* **CIVIL WAR MEDICINE**
This living history program depicts a typical aid station/field hospital and describes the role played by the U.S. Sanitary Commission as it assisted the wounded soldiers at Gettysburg. **July 31-August 1** at the Leister Farm (near the Cyclorama Center).

Need More Help?

Rangers are available in all park buildings. Park personnel frequently patrol park roads and are at work throughout the park. All are ready to help answer your questions about contemporary or historic Gettysburg.



Funded by Eastern National
Park and Monument Association



Eisenhower 50 Years Ago

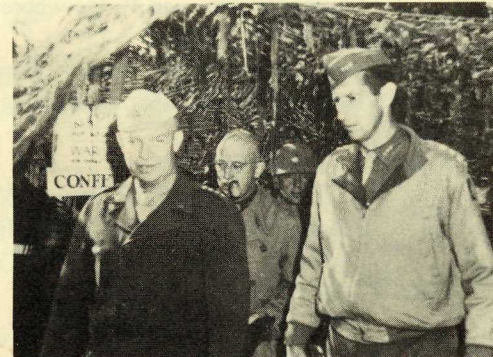
Fifty years ago the tide in the war for Europe had turned. In that year of 1943, the Allies took the initiative on all fronts.

The year began less than promisingly for Allied Supreme Commander, General Dwight D. Eisenhower. Not only had the Allied advance through North Africa become hopelessly bogged in mud, but Eisenhower also found himself embroiled in a raging political controversy over his willingness to deal with the fascist Vichy government in French Africa.

By May, however, the continent of Africa was entirely in Allied hands with 275,000 enemy troops having been captured. The Allies' next assault, the invasion of Sicily, was their first against the Axis position in Europe. On July 10, a half million troops under Eisenhower's command stormed the island in the largest amphibious assault ever attempted. The Allies continued to press their way up the Italian mainland until winter forced a stalemate.

By then, both allies and enemies acknowledged Eisenhower's ability to forge an effective alliance. He enjoyed great popularity among the enlisted troops, and he had won the respect of his superiors.

On December 7, 1943, President Roosevelt selected Eisenhower to be commander of Overlord. Thus, the year ended with Eisenhower shouldering the responsibility for one of the greatest military operations in history, the Normandy Invasion.



Eisenhower with Gen. Mark Clark
in Italy, 1943.

Park Rules & Safety Tips

HAVE A SAFE VISIT AND REMEMBER...

- * Heat can kill! Do not leave children or pets unattended in your car.
- * Protect valuables by locking your car at all times.
- * Please stay on park roads and obey the posted speed limits.
- * After walking in fields or wooded areas, check yourself carefully for ticks. Ticks can transmit Lyme disease.
- * Many park roads are One Way. Check for signs.
- * Bicycles are permitted on Park roads only. Please do not ride on trails or in field areas.
- * While driving, be alert for bicyclists, pedestrians, and deer crossing the road.
- * Help preserve the park resources. Do not climb on the monuments, cannons, stone walls or fences.
- * All plants, minerals, and objects must remain undisturbed. Relic hunting is NOT permitted.

In case of an accident or an emergency, contact any park employee, or call: 334-1124 (8:00 a.m. to 5:00 p.m.) 334-1812 (after hours) or "911."