

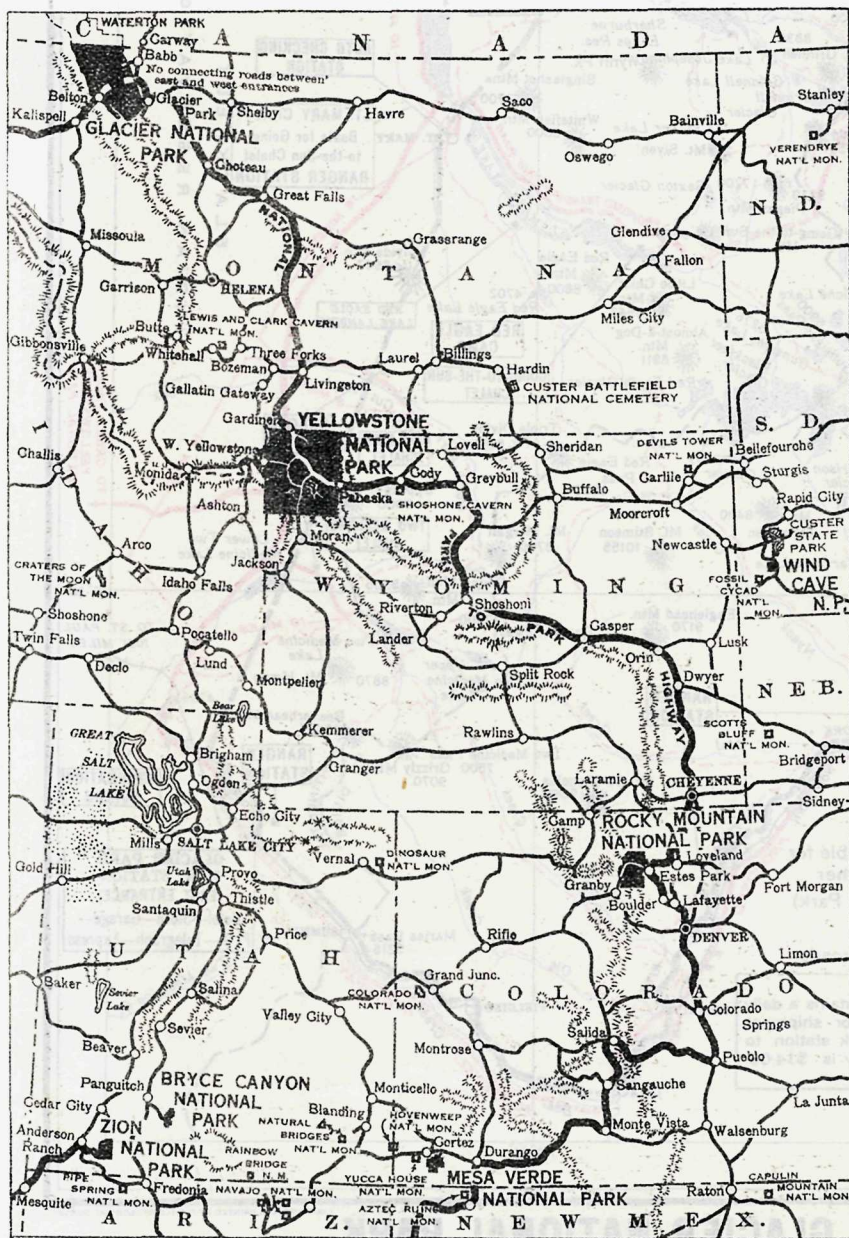
## CREATURES OF THE WILD

Glacier, once the favorite hunting ground of the Blackfeet Indians and now for 18 years strictly preserved, has a large and growing population of creatures of the wild. Its rocks and precipices fit it especially to be the home of the Rocky Mountain sheep and the mountain goat.

Both of these large and hardy climbers are found in Glacier in great numbers. They are a familiar sight in many of the places most frequented by tourists.

Trout fishing is particularly fine. There are half a dozen western varieties, of which perhaps the cutthroat is the most common. In the larger lakes the Mackinaw is caught up to 40 pounds in weight.

So widely are they distributed that it is difficult to name lakes of special fishing importance. Many of the best fishing lakes are seldom visited.



MAP SHOWING AUTOMOBILE ROUTES BETWEEN YELLOWSTONE, GLACIER, ROCKY MOUNTAIN, MESA VERDE, ZION, BRYCE CANYON, AND WIND CAVE NATIONAL PARKS.

## DEPARTMENT OF THE INTERIOR

ROY O. WEST, SECRETARY  
NATIONAL PARK SERVICE  
HORACE M. ALBRIGHT, DIRECTOR

# Motorists Guide GLACIER NATIONAL PARK MONTANA

1929

### USEFUL HINTS

This park is a National playground. Observance of the following rules and suggestions will make your visit pleasant and add to the pleasure of others.

Automobiles and motorcycles will be permitted on all of the park roads between the hours of 6:30 a. m. and 10:30 p. m. The park roads are divided into two systems, those west of the Continental Divide are known as the West Side Road System and those east of the Divide are known as the East Side Road System. The East Side Road System includes those sections of the road between Glacier Park Hotel, St. Mary Chalet, and Many Glacier Hotel, which lie within the limits of the Blackfeet Indian Reservation.

The entrance fee for automobiles and motorcycles in Glacier National Park is \$1.00.

All fees are payable in cash only and at points of entrance.

Careful driving is required at all times.

The speed limit is 15 miles per hour on grades and when rounding sharp curves. On straight stretches of road a speed of 25 miles is allowed.

Horns should be sounded when approaching curves, vehicles, pedestrians, or saddle animals.

Muffler cutouts must be closed when passing horses, hotels, or camps.

Do not drive in the ruts of the road. Observance of this suggestion will do much toward keeping the roads smooth and in good condition and may save you a broken spring.

When approaching saddle horses in narrow or dangerous places automobiles and engines will be stopped until riders pass. Saddle horses always have the right of way.

Teams have right-of-way at all times and in all places. If horses appear nervous, automobiles will take the outer edge of the road and engines will be stopped until horses have passed.

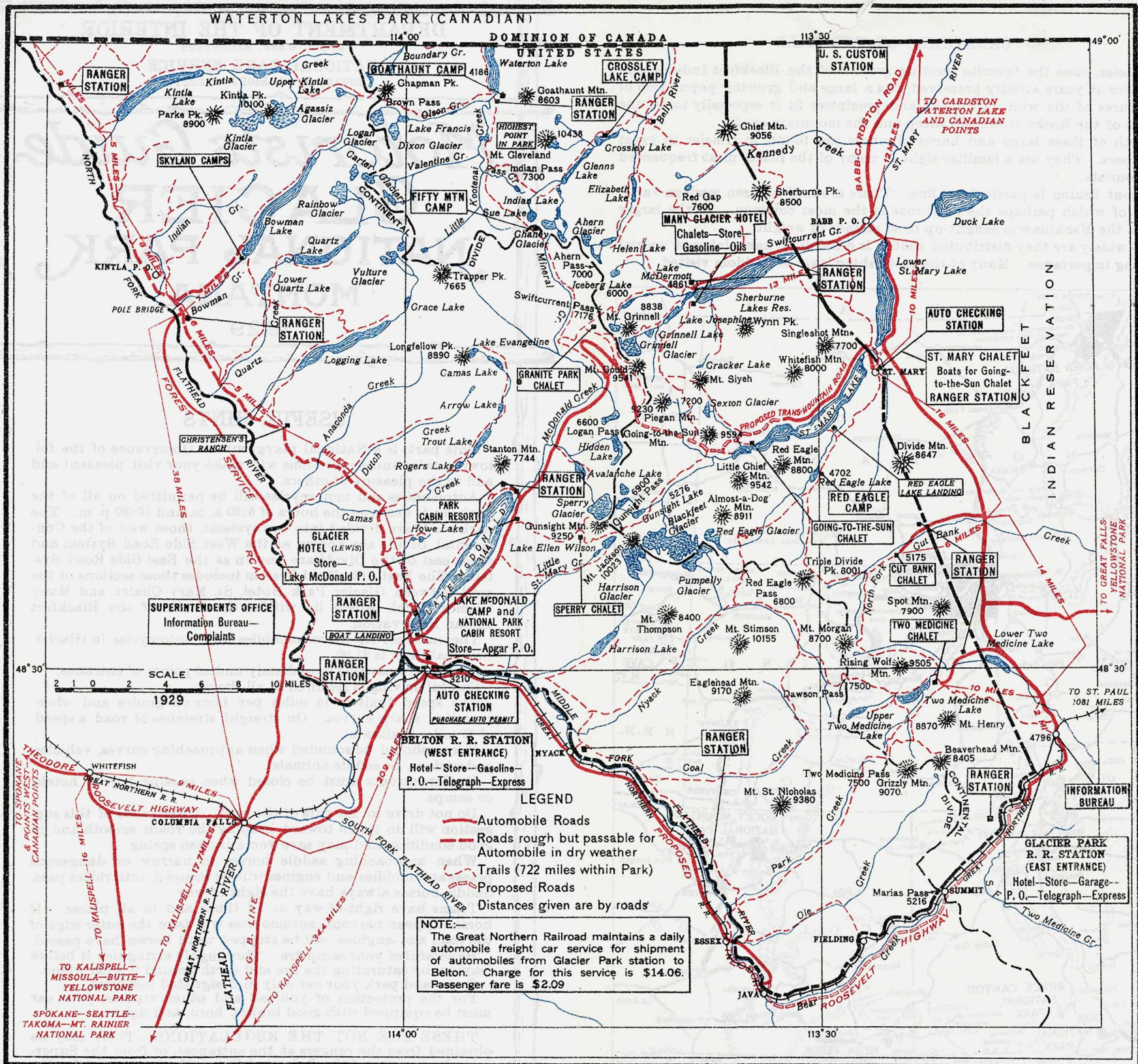
Be careful of your camp fire. Thoroughly extinguish it before leaving, by saturating the fire and earth around it with water.

Camp and park your car only in designated localities.

For the protection of yourself and other visitors, your car must be equipped with good brakes, horn, and lights.

THESE ARE NOT THE REGULATIONS.—There may be obtained from the rangers at the entrances, or from the Superintendent, copies of the Rules and Regulations pamphlet for the government of the Park and motor vehicle traffic therein. The Rules and Regulations pamphlet also contains general information regarding the park.

The Superintendent's office is at Park Headquarters at the west entrance, Belton, Montana; an administration and information office is also maintained at the east entrance, Glacier Park, Mont.



## GUIDE MAP SHOWING ROADS IN GLACIER NATIONAL PARK

**CAMPING** is permitted throughout the park on specially designated camp sites.

Leave clean grounds for the next camper.

**GLACIER NATIONAL PARK BELONGS TO YOU.  
HELP TAKE CARE OF IT.**

FOR FURTHER INFORMATION CONCERNING GLACIER  
OR OTHER NATIONAL PARKS ADDRESS THE  
NATIONAL PARK SERVICE,  
WASHINGTON, D. C.