

American Section WATERTON-GLACIER INTERNATIONAL PEACE PARK

# GLACIER

N A T I O N A L P A R K

*Montana*

# Glacier

MONTANA

*American Section* WATERTON-GLACIER

## Contents

Trick Falls . . . . .	Cover
International Peace Park . . . . .	6
The Park's Geological Story . . . . .	6
Flora and Fauna . . . . .	6
Indian Background . . . . .	7
Centers of Interest . . . . .	9
What To Do and See . . . . .	19
How To Reach the Park . . . . .	20
Park Highway System . . . . .	21
How To Dress . . . . .	22
Accommodations . . . . .	22

## Events OF HISTORICAL IMPORTANCE

- 1804-5 Lewis and Clark Expedition. Meriwether Lewis reached a point 40 miles east of the present park. Chief Mountain was indicated as King Mountain on the expedition map.
- 1810 First definitely known crossing of Marias Pass by white man.
- 1846 Hugh Monroe, known to the Indians as Rising Wolf, visited and named St. Mary Lake.
- 1853 Cutbank Pass over the Continental Divide was crossed by A. W. Tinkham, engineer of exploration party with Isaac I. Stevens, Governor of Washington Territory. Tinkham was in search of the present Marias Pass, described to Governor Stevens by Little Dog, the Blackfeet chieftain.
- 1854 James Doty explored the eastern base of the range and camped on lower St. Mary Lake from May 28 to June 6.
- 1855 Area now in park east of Continental Divide allotted as hunting grounds to the Blackfeet by treaty.
- 1872 International boundary survey authorized which fixed the location of the present north boundary of the park.
- 1882-83 Prof. Raphael Pumpelly made explorations in the region.
- 1885 George Bird Grinnell made the first of many trips to the region.
- 1889 J. F. Stevens explored Marias Pass as location of railroad line.

## NATIONAL PARK

Season • JUNE 15  
TO SEPTEMBER 15

## INTERNATIONAL PEACE PARK

Saddle-Horse Trips . . . . .	24
All-Expense Tours by Bus and Launch . . . . .	26
Transportation . . . . .	27
Launches and Rowboats . . . . .	28
Administration . . . . .	28
Naturalist Service . . . . .	28
Free Automobile Campgrounds . . . . .	29
Post Office, Telegraph, and Express Service . . . . .	29
Medical Service . . . . .	29
References . . . . .	30
Publications for Sale in Glacier National Park . . . . .	30

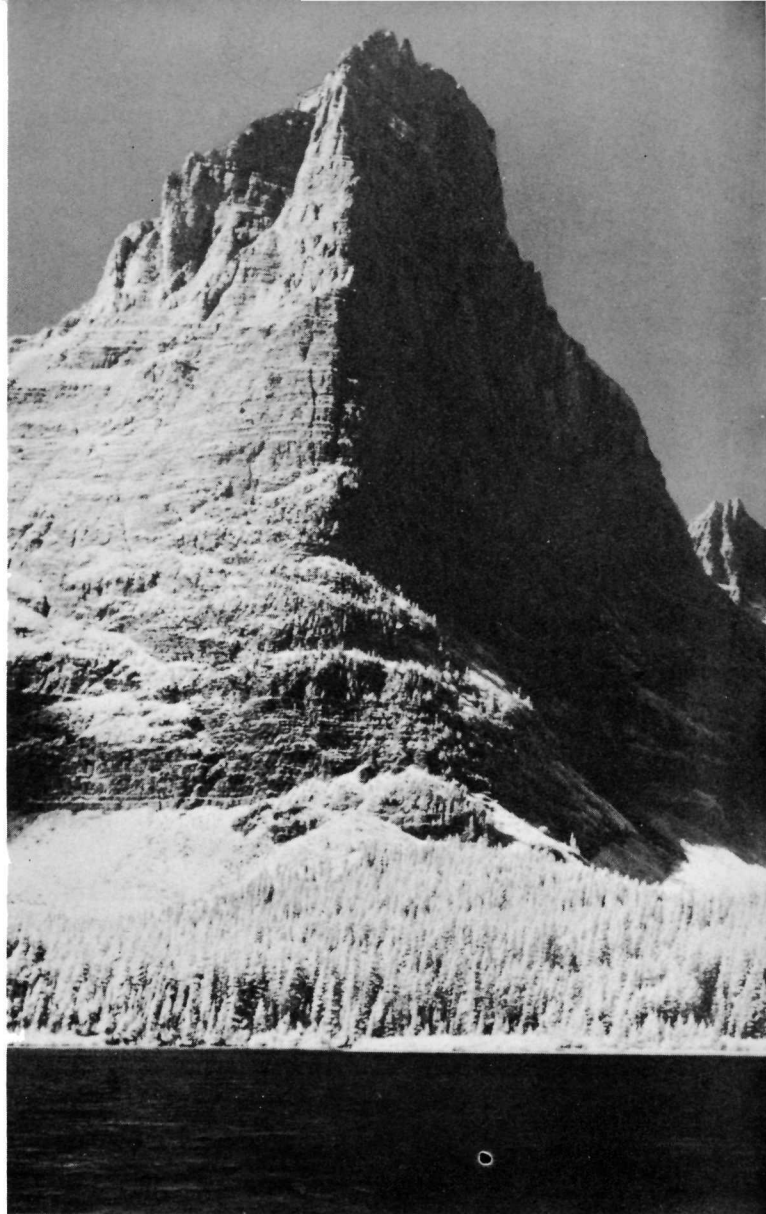
- 1891 Great Northern Railroad built through Marias Pass.
- 1895 Purchase of territory east of Continental Divide from the Blackfeet Indians for \$1,500,000, to be thrown open to prospectors and miners.
- 1901 George Bird Grinnell published an article in *Century Magazine* which first called attention to the exceptional grandeur and beauty of the region and need for its conservation.
- 1910 Bill creating Glacier National Park was signed by President Taft on May 11. Maj. W. R. Logan became first superintendent.
- 1932 Waterton-Glacier International Peace Park dedicated.
- 1933 Going-to-the-Sun Highway opened to travel throughout its length.
- 1934 Franklin D. Roosevelt first President to visit Glacier National Park.



UNITED STATES DEPARTMENT OF THE  
INTERIOR - - - Harold L. Ickes, *Secretary*

NATIONAL PARK SERVICE  
Arno B. Cammerer, *Director*

SHEPHERD  
GLACIER  
AND PYRAMID  
MOUNTAIN  
FROM  
GLENN LAKE



**G**LACIER NATIONAL PARK, in the Rocky Mountains of northwestern Montana, established by act of Congress May 11, 1910, contains 984,309 acres, or 1,537 square miles, of the finest mountain country in America. Nestled among the higher peaks are more than 60 glaciers and 200 beautiful lakes. During the summer months it is possible to visit most of the glaciers and many of the lakes with relatively little difficulty. Horseback and foot trails pene-

trate almost all sections of the park. Conveniently located trail camps, operated at a reasonable cost, make it possible for visitors to enjoy the mountain scenery without having to carry food and camping equipment. Many travelers hike or ride through the mountains for days at a time, resting each evening at one of these high mountain camps. The glaciers found in the park are among the few in the United States which are easily accessible.

## INTERNATIONAL PEACE PARK

The Waterton-Glacier International Peace Park was established in 1932 by Presidential proclamation, as authorized by the Congress of the United States and the Canadian Parliament.

At the dedication exercises in June of that year, the following message from the President of the United States was read:

"The dedication of the Waterton-Glacier International Peace Park is a further gesture of the good will that has so long blessed our relations with our Canadian neighbors, and I am gratified by the hope and the faith that it will forever be an appropriate symbol of permanent peace and friendship."

In the administration of these areas each component part of the Peace Park retains its nationality and individuality and functions as it did before the union.

### THE PARK'S GEOLOGICAL STORY

Most of the rocks in the park were laid down as sediments in shallow seas in the Algonkian era of geological time, when life was just beginning to manifest itself on earth. They consist of limestones and argillites, the latter being shales or mudstones hardened by pressure. During Tertiary times these were uplifted and folded. Acted upon by great pressure from the southwest a break, or fault, occurred, and a block of the crust of the earth, hundreds of miles long and scores of miles wide, was thrust upward over the rocks of the plains for distances of 7 to 22 miles. It was from this overthrust mass that erosional agents, principally glaciers, carved out the mountains, lake basins, and valleys of the park.

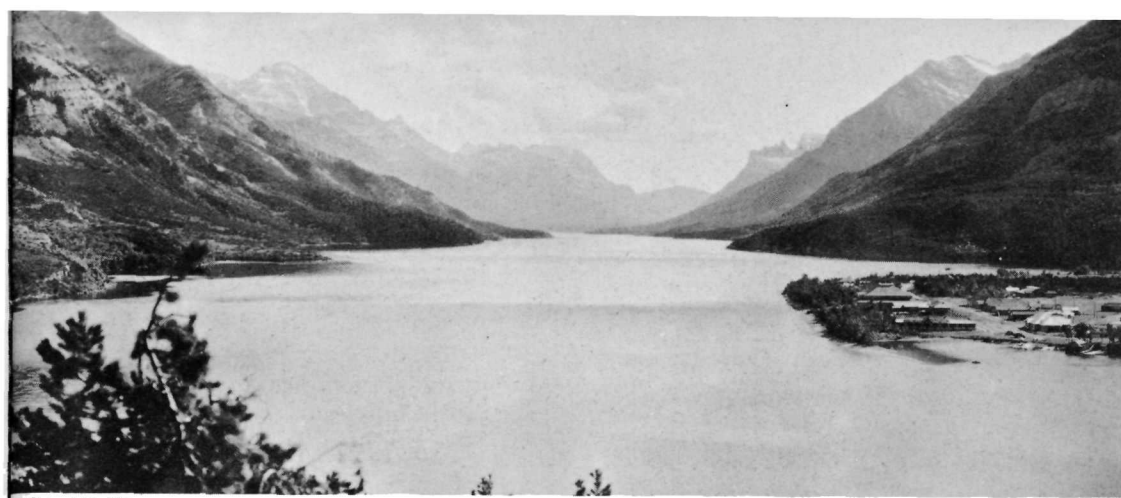
For more details of the story, the park publication "Origin of the Scenic Features of Glacier National Park" is recommended.

### FLORA AND FAUNA

Glacier National Park is exceptionally rich in many kinds of wildlife. Its rugged wilderness character, enhanced by numerous lakes and almost unlimited natural alpine gardens, combine to offer an unexcelled opportunity to enjoy and study nature.

Glacier is noted for its brilliant floral display which is most striking in early July. Above timber line hardy plants such as mosses and lichens, together with the delicately colored alpine flowers, are found. Lower on the mountains are heather, gentians, wild heliotrope, and stunted trees of alpine fir, white-barked pine, and alpine larch. The bear grass is one of the most characteristic plants of Glacier. The valleys on the east bear Engelmann spruce, alpine fir, lodgepole pine, Douglas fir, and limber pine.

The valleys of the west side are within an entirely different plant life



Copyright, Hileman

WATERTON LAKE—THE INTERNATIONAL PEACE LAKE

zone, typified by dense climax forests. For the most part these forests consist of red cedar and hemlock, with intermediate forests of larch, fir, spruce, and white pine. There are also younger stands of larch and lodgepole pine. Some of the white pines in McDonald Valley have reached huge dimensions. The deficiency of wild flowers found there is in part made up by the presence of sphagnum bogs with a typical fauna and flora of their own.

On the east, at lower elevations, representatives of the Great Plains flora are found, such as the passion flower, carpet pink, shooting star, scarlet paintbrush, red and white geraniums, bronze agoseris, the gaillardia, wild hollyhock, asters, and many other composites.

Of equal interest is the abundant animal life, including both the larger and smaller forms. Bighorn, mountain goats, moose, wapiti, grizzly and black bear, and western white-tailed and Rocky Mountain mule deer exist in as natural a condition as is possible in an area also utilized by man. Mountain caribou are occasional visitors to the park. The beaver, marmot, otter, marten, cony, and a host of smaller mammals are interesting and important members of the fauna. Among the birds, those that attract the greatest interest are the osprey, water ouzel, ptarmigan, Clark nutcracker, thrushes, and sparrows.

### INDIAN BACKGROUND

The earliest peoples inhabiting the northern Montana plains of which we have any record were apparently Snake Indians of Shoshonean stock. Later Nez Percés, Flatheads, and Kootenais pushed eastward through passes from the headwaters of the Columbia River system. Then came horses and firearms, and the whites themselves to set up an entirely different



BEAR GRASS GROWS IN ABUNDANCE

*Hileman photo*

state of affairs in their hitherto relatively peaceful existence. First, a growing and expounding Siouan race, pressed forward also by an expanding irresistible Algonkian stock, occupied the high plains and pushed back its peoples behind the wall of mountains. These were the Crows from the south, the Assiniboins to the east. Lastly, armed with strategy and Hudson's Bay Co. firearms, and given speed and range with horses, the dauntless Blackfeet came forth from their forests to become the terror of the north. They grew strong on the abundance of food and game on the Great Plains, and pushed the Crows beyond the Yellowstone River, until met by the forces of white soldiers and the tide of civilization.

Today the Blackfeet on the reservation adjoining the park on the east remain a pitiful but picturesque remnant of their former pride and glory. They have laid aside their former intense hostility to the whites and have reconciled themselves to the fate of irrepressible civilization. Dressed in colorful native costume, a few families of braves greet the park visitor at Glacier Park Station and Hotel. Here they sing, dance, and tell stories of their former greatness. In these are reflected in a measure the dignity, the nobility, the haughtiness, and the savagery of one of the highest and most interesting of aboriginal American peoples.

#### CENTERS OF INTEREST

##### GLACIER PARK STATION

Glacier Park, on the Great Northern Railway, is the eastern entrance to the park. It is located on the Great Plains, near the base of Glacier's Rockies. It is on United States Highway No. 2, which traverses from the east through northern Montana along the southern boundary of the park to Belton, the western entrance, and on to the Pacific coast. Glacier Park is also the southern terminus of the Blackfeet Highway which parallels the eastern boundary of the park and connects with the Alberta highway system. It is the southern end of the Inside Trail to Two Medicine, Cutbank, Red Eagle, and Sun Camp.

The commodious Glacier Park Hotel, several lesser hotels, auto camps, stores, an auxiliary park office, a Government fish hatchery, a post office and other structures are located here. The village gives a fine touch of western life, with Indians, cowboys, and picturesque characters contributing to its color. An encampment of Blackfeet is on Midvale Creek; these Indians sing, dance, and tell stories every evening at the hotel.

##### TWO MEDICINE

Two Medicine presents a turquoise mountain lake surrounded by majestic forest-covered peaks separated by deep glaciated valleys. A road leads into

it from the Blackfeet Highway and ends at the chalets near the foot of Two Medicine Lake. Across the water rises Sinopah Mountain, while to the north sweep upward the gray-green slopes of Rising Wolf to terminate in purple-red argillites and snow banks. One of the most inviting camp sites of the park is immediately below the outlet of the lake, not far from the chalets.

The cirques and broad mountain valleys above timber line are studded with cobalt blue lakes, and carpeted with multicolored beds of flowers. Mountain goats and sheep are frequently seen in these higher regions. Beaver colonies are located at the outlet of Two Medicine Lake and elsewhere around it, making this one of the best regions in the park to study these interesting mammals. An abundance of brook and rainbow trout in Two Medicine waters makes it a favorite spot for fishermen.

A campfire entertainment with a short popular talk is conducted every evening in the campfire circle of the auto camp by a resident ranger naturalist. Both chalet and campground guests avail themselves of the opportunity to meet for pleasure and instruction under the stars. Trails for hikers and saddle-horse parties radiate to adjacent points of interest. A daily afternoon launch trip across Two Medicine Lake brings the visitor to the foot of Sinopah, from which there is a short, delightful path through dense evergreen forest to the foot of Twin Falls. Trick Falls, near the highway bridge across Two Medicine River, 2 miles below the lake, is more readily accessible and should be visited by everyone entering the valley.

#### CUTBANK

Cutbank is a primitive, densely wooded valley with a singing mountain stream. Six miles above the Blackfeet Highway are a quiet chalet, a ranger station, and a small grove for auto campers. A spur lane, leaving the highway at Cutbank Bridge, 4 miles north of the Browning Wye, brings the autoist to this terminus. A more popular means of approach is on horseback, over Cutbank Pass from Two Medicine or over Triple Divide Pass from Red Eagle. Cutbank is a favorite site for stream fishermen. At the head of the valley above Triple Divide Pass is the Triple Divide Peak (8,001 feet) which parts its waters between the three oceans surrounding North America, i. e., its drainage is through the Missouri-Mississippi system to the Gulf of Mexico (Atlantic), through the Saskatchewan system to Hudson Bay (Arctic), and through the Columbia system to the Pacific.

#### RED EAGLE

Red Eagle Lake in Red Eagle Valley is reached by trail only from Cutbank over Triple Divide Pass or from St. Mary Chalets or Sun Camp via the Many Falls Trail. From the lake rise imposing Split, Almost-a-Dog,

and Red Eagle Mountains. On its sloping forested sides reposes Red Eagle Camp, which furnishes rest and shelter. It is a stopping place for travelers on the Inside Trail from Sun Camp or St. Mary to Glacier Park, and is a favorite spot for fishermen, as large, gamey, cutthroat trout abound in the waters of the lake. Reached by a secondary, picturesque trail that winds through magnificent forests, the head of Red Eagle Creek originates in a broad, grassy area almost as high as the Continental Divide. This bears Red Eagle Glacier and a number of small unnamed lakes, and is hemmed in by imposing rock walls and serrate peaks.

#### ST. MARY AND SUN CAMP

To many people St. Mary Lake is the most sublime of all mountain lakes of the world. From its foot roll the plains northeastward to Hudson Bay and the Arctic. Its long and slender surface is deep emerald green, nestled in a salient in the Front Range, with peaks rising majestically a mile sheer over three of its sides.

St. Mary Chalet at the lower end of the lake, Going-to-the-Sun Chalets (Sun Camp) near the upper end, Roes Creek Campgrounds on the north shore, and a hikers' camp at the outlet of Baring Creek furnish ample accommodations for all classes of visitors.

The celebrated Going-to-the-Sun Highway from St. Mary Junction over Logan Pass to Lake McDonald runs along the north shore of St. Mary Lake past Roes Creek Camp. Spurs connect the chalets. Trails centering at Sun Camp lead everywhere, and horseback riding and hiking are especially popular.

A ranger naturalist, stationed at Sun Camp, conducts field trips daily, lectures each evening in the chalet lobby, and maintains a cut-flower exhibit there. Small stores are maintained at both chalets; gasoline is obtainable at each. Scenic twilight launch rides on the lake are featured when the waters are calm. The ranger-naturalist generally accompanies these trips to impart interesting information about the lake and mountains.

#### MANY GLACIER REGION

For many Swiftcurrent Lake is the hub of points of interest, to be surpassed by no other spot in the park. From it branch numerous deep and interesting glacial valleys. Fishing, boating, swimming, hiking, photographing, mountain climbing, horseback riding, and nature study are to be enjoyed at their best here. It is reached by an excellent spur road from the Blackfeet Highway at Babb, or by trail from Sun Camp, Granite Park, and Waterton Lakes.

Many Glacier Hotel, the largest hotel in the park, is located on Swift-



Hileman photo

MANY GLACIER HOTEL OVERLOOKING SWIFTCURRENT LAKE

current Lake. Just beyond the hotel is an auto camp and a group of auto housekeeping cabins. The hotel has telegraph and telephone services, an information desk, curio shop, a grill room and soda fountain, swimming pool, barber and shoe-shining shop, photograph shop, a first-aid medical establishment, and other services. A garage is situated near the hotel. A store with an ample line of campers' needs, including fresh meat, bread, butter, and eggs, is located in the auto campground.

Ranger-naturalist service is available at Many Glacier. This includes daily field walks; a nightly lecture augmented by motion pictures and slides in the Convention Hall in the basement of the hotel; an evening campfire entertainment in the auto camp; a cut-flower and geological exhibit in the hotel lobby and in the auto camp; a small museum on the opposite shore of the lake from the hotel, on the road leading to the campground; a self-guiding trail around Swiftcurrent Lake; information service in the museum; a naturalist-accompanied launch trip on Swiftcurrent and Josephine Lakes in the afternoon. In addition to this last-named, several other launch trips are taken daily on these lakes. This service may be used to shorten hikers' distance to Grinnell Lake and Glacier.

Many Glacier is a center for fishermen, and in this region the possibility of seeing and studying wildlife is the best.

There are many excellent trails in the Swiftcurrent section, Morning Eagle Falls, Cataract Falls, Grinnell Lake, Grinnell Glacier, Iceberg Lake, and Ptarmigan Lake being all reached by oiled horseback trails. Good footpaths lead around Swiftcurrent and Josephine Lakes to the summit of Mount Altyn and to Appekunny Falls and Cirque.



Hileman photo

BIGHORN RAMS ARE AMONG THE INTERESTING ANIMALS SEEN IN GLACIER

#### BELLY RIVER VALLEY, WATERTON LAKE, AND GOATHAUNT

Though much like Swiftcurrent Valley in topographical make-up, the Belly River district is much wilder and more heavily forested. It is accessible by trail only from Many Glacier over Ptarmigan Wall or from Waterton Lake over Indian Pass. These, with spur trails to Helen and Margaret Lakes, make up the principal trail system. The Glacier Park Saddle Horse Co. maintains a comfortable mountain camp on Crossley Lake, where food and lodging are available at reasonable rates. Fishing is good in the lakes of the Belly River country. The 33-mile trip from Many Glacier to Waterton is one of the finest to be taken in the park. Crossley Lake Camp is approximately midway.

The International Waterton Lake and the northern boundary line of Glacier National Park mutually bisect each other at right angles. Mount Cleveland rises 6,300 feet sheer above the head of the lake. Waterton Lake townsite, Alberta, is located at the foot. It is reached by highway from Glacier Park, Babb, Cardston, Lethbridge, Calgary, and points in the Canadian Rockies. The modern Prince of Wales Hotel, several other hostelrys, cabin camps, garages, stores, and other conveniences are in the settlement. A 12-mile spur highway leads to Cameron Lake, another international body of water on whose northern (Canadian) shore is a fine example of a sphagnum bog. Another winding road leads to a colorful canyon known as "Red Rock."

A picturesque cut-off highway over aspen-covered foothills around the very base of majestic Chief Mountain, and beginning at a point 4 miles north of Babb, leads to Waterton Lakes Park in Canada.

Trails lead from the village to principal points of interest in the Canadian Park, as well as up the west shore to the head of the lake, at which are situated the Government ranger station and Goathaunt Camp. The head of the lake is more readily reached by the daily launch service from Waterton Village, or over trail from Many Glacier by Crossley Lake Camp, or by Granite Park and Flattop Mountain. A scenic trail leads to Rainbow Falls and up Olson Valley to Browns Pass, Bowman Lake, Hole-in-the-Wall Falls, Boulder Pass, and Kintla Lake in the northwest corner of the park. There are no hotel or camp accommodations at Bowman or Kintla Lakes.

Game is varied and abundant in this region; bird life also abounds because of the variety of cover.

#### FLATTOP MOUNTAIN AND GRANITE PARK

Glacier Park has within its boundary two parallel mountain ranges. The eastern, or front range, extends from the Canadian boundary almost without a break to New Mexico. The western, or Livingston Range, rises at the head of Lake McDonald, becomes the front range beyond the international line, and runs northwestward to Alaska. Between these two ranges in the center of the park is a broad swell which carries the Continental Divide from one to the other. This is Flattop Mountain, whose groves of trees are open and parklike, wholly unlike the dense forests of the lowlands with which every park visitor is well acquainted.

A trail leads south from Waterton over Flattop to the tent camp, called Fifty Mountain, and to Granite Park, where a comfortable high-mountain chalet is located. Here is exposed a great mass of lava, which once welled up from the interior of the earth and spread over the region which was then the bottom of a sea. The chalets command a fine view of the majestic grouping of mountains around Logan Pass, of the noble summits of the Livingston Range, and of systems far to the south and west of the park. Extending in the near foreground are gentle slopes covered with sparse clumps of stunted vegetation. In early July open spaces are gold-carpeted with glacier lilies and bizarrely streaked with lingering snow patches. Beyond are the deep, heavy forests of Upper McDonald Valley.

The chalets may also be reached from Sun Camp and Logan Pass over a trail along the Garden Wall, from the highway 2 miles above the western switchback by a 4-mile trail, from Avalanche Camp and Lake McDonald over the McDonald Valley trail, and from Many Glacier by the trail over Swiftcurrent Pass. A short distance from the chalets a spur from the trail to the Waterton Lake leads to Ahern Pass, from which there is an unexcelled view of Ahern Glacier, Mount Merritt, Helen and Elizabeth Lakes, and the South Fork of the Belly River. This spur is only a mile

from the chalets. At Fifty Mountain Camp, half-way between Granite Park and Waterton, a second spur, a quarter of a mile long, takes one above Flattop Mountain to the summit of the knife-edge. From here there is a fine panorama of Mount Cleveland, Sue Lake, and Middle Fork of Belly River.

A foot trail, 1 mile long, leads from the Granite Park chalet to the summit of Swiftcurrent Mountain upon which a fire lookout is located. For the small amount of effort required to make this ascent of 1,000 feet, no more liberal reward of mountain scenery could be possible. Another foot trail leads from the chalets to the rim of the Garden Wall, from which there are splendid views of Grinnell Glacier and the Swiftcurrent region.

Animal life is varied and easily studied at Granite Park. Bear and deer are common in this section. Mountain goats are frequently seen above Flattop Mountain or near Ahern Pass, and mountain sheep graze on the slopes of the Garden Wall. Ptarmigan should be looked for, especially above Swiftcurrent Pass.

Granite Park is a paradise for lovers of alpine flowers. On the Garden Wall, the connoisseur should seek for the rare, heavenly blue alpine columbine. Here are expanses of dryads, globe flowers, alpine firewood, and a wealth of others. Early July is the best time for floral beauty.

#### LOGAN PASS

Logan Pass lies between the headwaters of Logan and Reynolds Creeks. It crosses the Continental Divide and carries the Going-to-the-Sun Highway from Lake McDonald to Upper St. Mary Lake and the trail from Sun Camp to Granite Park.

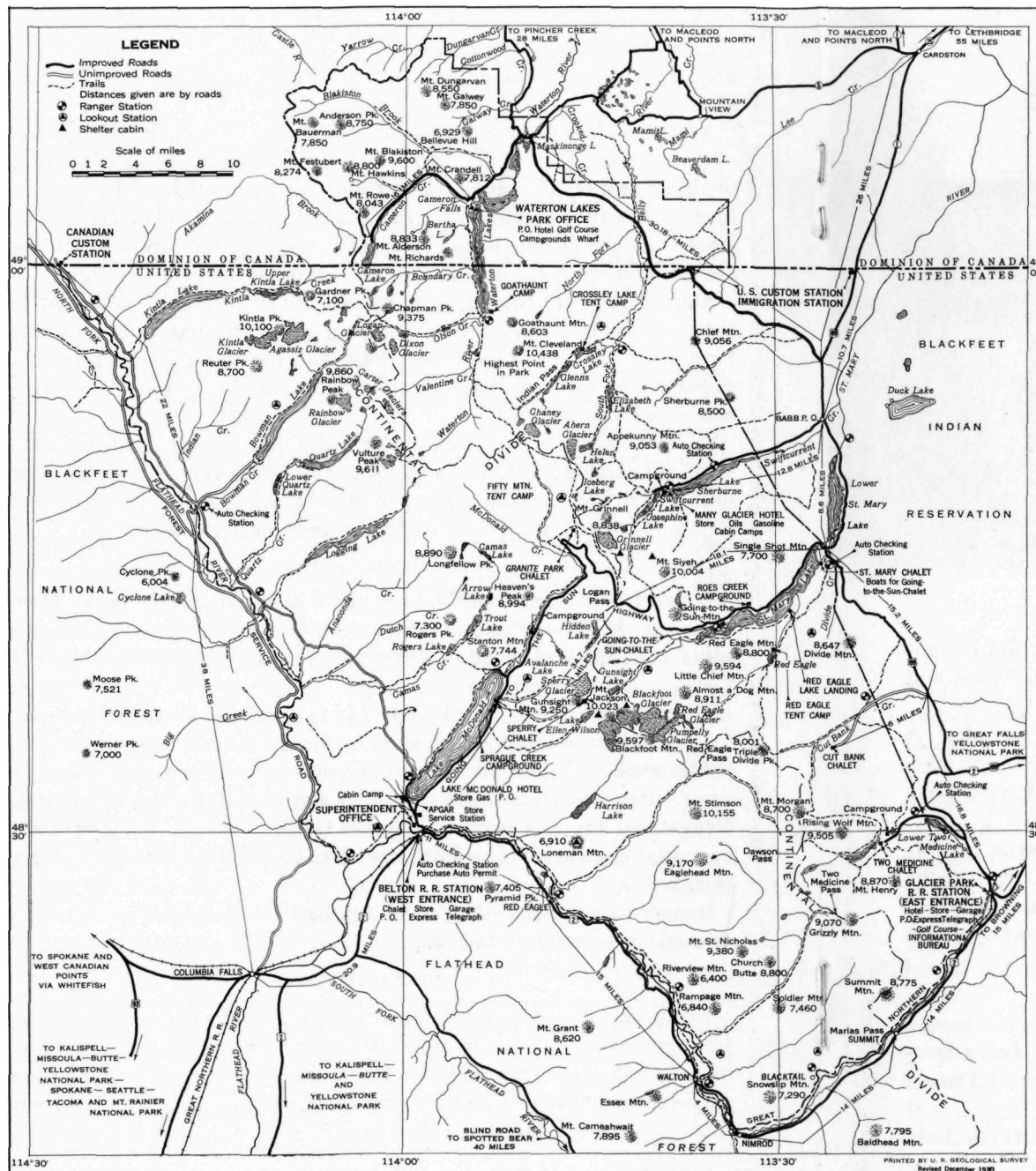
Though there are no overnight stopping places on the pass, its accessibility by automobile makes it a starting place for several delightful walks, chiefly to Hidden Lake, which occupies a basin only recently evacuated by ice, and tiny Clements Glacier, which sends its water to both the Arctic and Pacific Oceans and has been termed "Museum Glacier" because it encompasses in its few hundred acres of surficial area all of the principal features of a major glacier.

Ranger-naturalist services, including short field trips, are available daily throughout **summer** on the pass.

#### AVALANCHE CAMP

Avalanche auto camp is located in a grove of cedars and cottonwoods on a picturesque flat at the mouth of Avalanche Creek. It is equipped with modern toilets, showers, and laundry, but has no stores or gasoline station. A Government ranger naturalist and a camp tender serve the camp, which is on Going-to-the-Sun Highway.





MAP OF WATERTON-GLACIER INTERNATIONAL PEACE PARK

Near the upper end of the camp, Avalanche Creek has cut a deep, narrow gorge through brilliant red argillite. It is filled with potholes scoured out by stones swirled in the foaming torrent. Drooping hemlocks, festooned with goatsbeard lichen, keep the spot in cool, somber gloom even on the hottest midday. This gorge is the home of the water ouzel, which is often seen flying back and forth in the spray.

From the gorge, a self-guiding trail leads 2 miles to Avalanche Basin, a semicircular amphitheater with walls over 2,000 feet high over which plunge a half dozen snowy waterfalls. A dense forest and calm lake repose on the floor of the cirque. Fishing is good in the lake. The narrow canyon through which the trail leads from the camp offers fine views of Heaven's Peak, Mount Cannon, Bearhat Mountain, Gunsight Mountain with the cirque bearing Sperry Glacier, and the canyon in which Hidden Lake reposes. In the early season the walls of the basin and canyon are draped with countless waterfalls. The sides of Cannon and Bearhat offer one of the most opportune places for seeing mountain goats. In late season huckleberries are abundant.

A ranger naturalist conducts an entertainment five evenings a week in the campfire circle in the auto camp.

#### LAKE McDONALD

Lake McDonald is the largest lake in the park, being 10 miles long and a mile wide. Its shores are heavily forested with cedar, hemlock, white pine, and larch. At its head impressive, rocky summits rise to elevations 6,000 feet above its waters. The Going-to-the-Sun Highway runs along its southeastern shore. Its outlet is 2 miles above Belton station.

Lake McDonald Hotel is on the highway near the upper end of the lake. It has a store for general supplies, a gasoline station, curio shop, and all modern conveniences. Its dining room, facing the lake, is one of the most appropriate and charming in the park. Its lobby is filled with well-mounted animals and birds of the region. It is the focal point for trails to



Ruhle photo

#### ROCKY MOUNTAIN GOAT

Sperry Chalet and Gunsight Pass, Upper McDonald Valley, the summit of Mount Brown, and Arrow Lake. There is good fishing in Arrow and Snyder Lakes.

Private cabin camps are located at the head and foot of the lake. A general store and gasoline filling station are located at the foot of the lake. A well-equipped public auto campground is at Sprague Creek, near Lake McDonald Hotel. Trailers are restricted in this campground.

Ranger-naturalist services are available at the hotel. Lectures on popular natural history are delivered each evening in the hotel lobby and at the Sprague Creek campfire circle. A cut wild-flower exhibit is also placed in the hotel. Self-guiding trails lead to Fish and Johns Lakes, short distances from the hotel.

#### SPERRY CHALETS

Sperry Chalets are located in a picturesque high-mountain cirque, with precipitous, highly colored Edwards, Gunsight, and Lincoln Peaks hemming it in on three sides. It is reached by trail only from Lake McDonald and from Sun Camp via Gunsight and Lincoln Passes.

Mountain climbing, exploring Sperry Glacier, fishing in nearby Lake

Ellen Wilson, and meeting mountain goats are the chief diversions of this entrancing spot, located at timber line. During late afternoons goats are to be seen perched against the cirque walls. Practically every evening they start down for the chalets, to reach there after midnight. Besides these, deer, marmots, conies, clark nutcrackers, and other wildlife are abundant.

#### BELTON

Belton, on the Great Northern Railway, is the entrance to the west side of the park. It has stores, hotel, chalet, and a cabin camp to accommodate the visitor.

#### WHAT TO DO AND SEE

##### FISHING

The waters of Glacier National Park abound in fish. All well-known species of trout have been planted. They have thrived owing to the abundant natural fish foods and the nearly constant temperature of the waters the year around. Cutthroat, eastern brook, and rainbow are the most abundant. Fly fishing is the greatest sport, but spinners and the ever-abundant grasshopper may be used successfully by those not skilled in the use of the fly. All fishing must be in conformity with the park regulations. No license for fishing in the park is required.

##### HIKING AND MOUNTAIN CLIMBING

The park is a paradise for hikers and mountain climbers. There are numerous places of interest near all hotels and chalets which can be visited by easy walks; or trips can be made to occupy one or more days, stops being planned at various hostelryes or camping sites en route.

Hikers should secure a topographic map of the park which shows all streams, lakes, glaciers, mountains, and other principal features. This map can be purchased for 25 cents at the superintendent's office at Belton, the administration office at Glacier Park Station, the hotels, and all registration stations at the park entrances.

In this rugged country hikes of 15 miles or more should be attempted only by those who are accustomed to long, hard trips. Hikers should consult a ranger naturalist or information ranger before venturing on a hazardous, novel, or new undertaking. No one but an experienced mountaineer should attempt to spend a night in the open. Shelter cabins, for free use by parties overtaken by a storm, have been erected by the Government on Indian, Piegan, and Gunsight Passes. They are equipped with flagstone floors, stoves, and a limited supply of fuel wood. Mountain etiquette demands that they not be left in a disorderly state, that no more fuel be

consumed than is absolutely necessary, and that their privileges and advantages not be abused. Unless one is an experienced mountaineer and thoroughly familiar with the park, it is unwise to go far from the regular trails alone. He should not scorn the services of a guide on such trips. *Above all, he should not attempt to hike across country from one trail to another.* The many sheer cliffs make this extremely dangerous.

At each ranger station, hotel, chalet, and permanent camp in the park will be found a "Hiker's Register" book. Everyone is urged for his own protection to make use of these registers, entering briefly his name, home address, time of departure, plans, and probability of taking side trips or of changing plans. These precautions are to protect the park visitor. In case of injury or loss, rangers will immediately investigate.

#### SWIMMING

While it is possible for visitors to indulge in lake bathing, it will be found that the water of the lakes, usually just from the melting glaciers, is uncomfortably cold, and for this reason is not enjoyed except by the most hardy. Swimming pools and plunges with warmed water are provided at Glacier Park Hotel and Many Glacier Hotel.

#### PHOTOGRAPHY

Glacier offers exceptional views to delight the photographer. While the scenic attractions are most commonly photographed, the animals, the flowers, and the picturesque Blackfeet Indians provide interesting subjects. Photographic laboratories are maintained at Many Glacier, Lake McDonald, and Glacier Park Hotel, and at Belton village. Expert information regarding exposures and settings is also available at these places.

#### HOW TO REACH THE PARK

##### BY RAIL

The park entrances are on the main transcontinental line of the Great Northern Railway. Glacier Park Station, Mont., the eastern entrance, is 1,081 miles west of St. Paul, a ride of 30 hours. Belton, Mont., the western entrance, is 637 miles east of Seattle, a ride of 20 hours.

For information regarding railroad fares, service, etc., apply to railroad ticket agents or address A. J. Dickin, passenger-traffic manager, Great Northern Railway, St. Paul, Minn.

A regular bus schedule is maintained by the Glacier Park Transport Co. to accommodate persons arriving by rail.

##### BY BUS

The Intermountain Transportation Co. operates to Belton from Missoula on the south, connecting with the Washington Motor Coach Co. to points east and west, and from Bonner's Ferry on the west where connections are made with the Auto Interurban Transportation Co. and Washington Motor Coach Co. From the east the park gateway is reached by the Intermountain Transportation Co., via Shelby from Butte and Great Falls, Mont., or Williston, N. Dak., which company provides a through service from the East to points in the West via the park. The Great Falls Coach Lines Co. also serves the park from Great Falls, where connections are made with the Northland Greyhound Lines and the Intermountain Transportation Co. to eastern points. On the north the authorized park operator connects at Waterton Lakes with the Central Canadian Greyhound Lines from Lethbridge or McLeod.

##### BY AIRPLANE

Planes of the Western Air Express land at Glacier Park Airport on the Blackfeet Indian Reservation, 35 minutes by automobile from the east entrance to the park. Western Air Express connects at Salt Lake City with the United Air Lines' main transcontinental route and at Butte-Helena with the Northwest Airlines.

##### BY AUTOMOBILE

Glacier National Park may be reached by motorists over a number of well-marked automobile roads. The park approach roads connect with several transcontinental highways, including United States Highways Nos. 2, 89, and 93. From both the east and west sides automobile roads run north and connect with the road system in Canada, and motorists may continue over these roads to the Canadian national parks. Glacier National Park is the western terminus of the Custer Battlefield Highway.

A fee of \$1 is charged for a permit to operate an automobile in Glacier Park. This permit allows reentry into the park at any time during the current season. Maximum speed limit in the park is 35 miles per hour. On mountain climbs and winding roads, utmost care in driving is demanded. All cautionary signs must be observed.

##### PARK HIGHWAY SYSTEM

The Blackfeet Highway, United States Highway No. 89, lying along the east side of the park, is an improved road, leading from Glacier Park Station to the Canadian line via Babb, Mont., and from the line to Waterton Lakes Park and other Canadian points via Cardston, Alberta. The improved, picturesque Chief Mountain International Highway branches

from this road at Kennedy Creek Junction, 4 miles north of Babb, leading around the base of Chief Mountain to Waterton Lakes Park. Improved highways lead from the Blackfeet Highway to Two Medicine Lake, the Cutbank Chalets, and Many Glacier Hotel on Swiftcurrent Lake.

The Theodore Roosevelt Highway, United States Highway No. 2, follows the southern boundary of the park from Glacier Park Station to Belton, a distance of 58 miles, and a trip over this highway affords excellent views.

The spectacular Going-to-the-Sun Highway, well known as one of the outstanding scenic roadways of the world, links the east and west sides of the park, crossing the Continental Divide through Logan Pass at an altitude of 6,654 feet, and connects with the Blackfeet Highway at St. Mary Junction, a distance of 51 miles from Belton. East of the divide an improved spur road leads to Going-to-the-Sun Chalets on famous St. Mary Lake. On the west side at Apgar, 2 miles above Belton, a narrow dirt road follows the north fork of the Flathead River to Bowman and Kintla Lakes.

#### HOW TO DRESS

There is no need for formal clothes in the park. For saddle trips, hiking, or idling, both men and women wear riding breeches for greater comfort and freedom. Golf knickers are also satisfactory. "Shorts," such as are worn by Boy Scouts, are not generally feasible for use on long hikes in this park. Ordinary cotton khaki breeches will do, although woolen ones are preferable; lightweight woolen underwear and overshirt are advised because of rapid changes of temperature. A sweater or woolen mackinaw jacket, one or two pairs of cotton gloves, and a raincoat are generally serviceable. Waterproof slickers are furnished free with saddle horses.

Supplies and essential articles of clothing of good quality, including boots, shoes, leggings, socks, haversacks, shirts, slickers, blankets, camping equipment, and provisions, may be purchased at well stocked commissaries at Glacier Park, Many Glacier, and Lake McDonald Hotels and at the camp store at Many Glacier campground. The Glacier Park Hotel Co., which operates these commissaries, also makes a practice of renting, at a nominal figure, riding outfits, mackinaw coats, and other overgarments. Stores carrying a similar general line of articles most useful in making park trips are located at Belton and at Glacier Park village. There is a store carrying provisions, cigars, tobacco, and fishermen's supplies at the foot of Lake McDonald.

#### ACCOMMODATIONS

The Glacier Park Hotel Co., under franchise from the Department of the Interior, operates the hotel and chalet system in the park and the Belton Chalets. This system includes the Glacier Park Hotel at Glacier Park

*Glacier National Park . Montana*

Station, an imposing structure built of massive logs, nearly as long as the Capitol at Washington, accommodating 400 guests; the Many Glacier Hotel on Swiftcurrent Lake, accommodating over 500 guests; and the Lake McDonald Hotel on Lake McDonald, with capacity for 100 guests.

The chalet groups are from 10 to 18 miles apart, but within hiking distance of one another or of the hotels, and provide excellent accommodations for trail tourists. They are located at Two Medicine, Cutbank, St. Mary, Sun Camp, Granite Park, Sperry, and Belton. In addition to these, the Glacier Park Saddle Horse Co. maintains tent camps at Red Eagle Lake, Crossley Lake, Goathaunt, and Fifty Mountain.

There are also a few hotels and camps located on the west side, in or adjacent to the park, on private lands. The National Park Service exercises no control over their rates and operations. Private tourist cabins and hotels are operated outside the park at Glacier Park Station, Belton, St. Mary, Babb, and Browning Junction.

#### RATES

The Glacier Park, Many Glacier, and Lake McDonald Hotels are open from June 15 to September 15. The American-plan rates range from \$6.50



*Hileman photo*

HOUSEKEEPING CABINS AT MANY GLACIER CAMPGROUNDS

a day for a room, without bath, to \$14 a day for de luxe accommodations for one. Rooms may also be obtained on the European plan. Breakfast and lunch cost \$1 each; dinner, \$1.50. Children under 8 are charged half rates, and a discount of 10 percent on room rental is allowed for stays of a week or longer at any one hotel. Cabins are obtainable at Lake McDonald Hotel at a rate of \$5 each, American plan, for 3 persons in 1 room; 2 persons in room, \$5.50 each; 1 person, \$6.50.

Chalets operated during 1939 will be open from June 15 to September 15, except Sperry and Granite Park, which will open July 1 and close September 1. Minimum rates are computed on a basis of \$4.50 a day per person, special accommodations ranging as high as \$7.50. A 10-percent discount on room rental is allowed for stays of a week or more at any one chalet group. Tent camp rates are \$5 per day, per person, American plan.

The Swiftcurrent auto cabins are located a little more than a mile from Many Glacier Hotel. Here a 2-room cabin for 1 or 2 persons costs \$2.50 a day; 3 or 4 persons in a 3-room cabin, \$4 a day. Blankets and linen may be rented by the day. The 10 percent discount given at the hotels and chalets also applies to the housekeeping cabins.

#### SADDLE-HORSE TRIPS

Glacier National Park, with nearly 900 miles of trails, has the distinction of being the foremost trail park. More saddle horses are used than in any other park or like recreational region in this country. The Glacier Park Saddle Horse Co. has available during the season about 800 saddle animals.

At Glacier Park, Many Glacier, and Lake McDonald Hotels, Going-to-the-Sun Chalets, and Goathaunt Tent Camp, horses may be engaged or released for trips in the park, including camping trips. At Two Medicine Chalets horses may be engaged or released for local rides only.

A wonderful 3-day excursion is afforded by the Logan Pass Triangle trip. This trip may be started at either the Many Glacier Hotel and Chalets or Going-to-the-Sun Chalets. Beginning at Many Glacier Hotel, the first day's route follows up Swiftcurrent Pass to Granite Park Chalets, where luncheon is served and the overnight stop made. The second day the Garden Wall Trail to Logan Pass is followed, with a box luncheon on the way, and Going-to-the-Sun Chalets are reached in late afternoon in time for dinner. The return to Many Glacier Hotel is made the third day via Piegan Pass, Grinnell Lake, and Josephine Lake.

The South Circle trip requires 5 days to complete and may be started either from Many Glacier, Going-to-the-Sun Chalets, or Lake McDonald Hotel. Three of the principal passes are traversed—Swiftcurrent, Gunsight, and Piegan. The North Circle trip is also a 5-day tour via tent camps,



*Hileman photo*

HORSEBACK PARTY FORDING CLEVELAND CREEK

crossing Swiftcurrent Pass, Indian Pass, and Ptarmigan Wall. The trip starts from Many Glacier Hotel, Going-to-the-Sun Chalets, or Lake McDonald Hotel.

There is a 4-day inside trail trip from Glacier Park Hotel via Two Medicine, Cut Bank, and Red Eagle to Sun Camp. Many delightful specially scheduled trips of 1 and 2 days' duration are also available.

Information about saddle-horse trips may be obtained at any of the hotels or other points of concentration. Practically any type of trip desired can be arranged, from short excursions to special points of interest, such as the half-day trip from Glacier Park Hotel to Forty-Mile Creek for \$3.50, to pack trips of unlimited duration; the larger the party, the cheaper the rates. For minimum parties of 3 persons, the average rate for 1-day trips is \$5 or \$6. For parties of 3 or more, the all-expense Fifty Mountain Trail trip of 3 days is \$28.50; the 5-day North Circle trip, \$50.50. These are specifically mentioned merely to give an idea of the cost; many other fine trips are available at rates computed on a similar basis.

Special arrangements can be made for private camping parties making a trip of 10 days or more at rates amounting to \$11 a day each for groups of 7 or more; \$12 a day each for 6 persons; \$13 for 5; \$15 for 4; \$16 for 3; \$18 for 2; and \$27 for 1 person. A guide and cook are furnished for a party



Grant photo

RESTING AT THE SOUTH PORTAL OF THE TUNNEL ON PTARMIGAN WALL TRAIL

of one or more persons, and extra helpers are added, if the number of persons require it. Private trips of less than 10 days may also be arranged.

Experienced riders may rent horses for use on the floor of the valleys at \$1 an hour, \$3 for 4 hours, and \$5 for 8 hours.

#### ALL-EXPENSE TOURS BY BUS AND LAUNCH

The Glacier Park Transport Co., the Glacier Park Hotel Co., and the Glacier Park Boat Co. have jointly arranged very attractive all-expense tours of the park. These trips are priced reasonably and include auto fare, meals, hotel lodgings, and launch excursion. They begin at Glacier Park Station for west-bound passengers and at Belton for east-bound passengers and are made daily during the season.

*Trip No. 1—1-day tour.*—Between Glacier Park Hotel, Going-to-the-Sun Chalets, Lake McDonald Hotel and Belton Station, with side trip to Two Medicine Lake and launch trip on lake, per person, \$17.

*Trip No. 2—2-day tour.*—Between Glacier Park Hotel, Many Glacier Hotel, Going-to-the-Sun Chalets, Lake McDonald Hotel, and Belton Station, with side trip to Two Medicine Lake and launch trip on lake, per person, \$28.25.

*Glacier National Park . Montana*

26



Hileman photo

BUSES STOPPING AT GOING-TO-SUN CHALETS

*Trip No. 3—3-day tour.*—Between Glacier Park Hotel, Prince of Wales Hotel, Many Glacier Hotel, Going-to-the-Sun Chalets, Lake McDonald Hotel, and Belton Station, with side trip to Two Medicine Lake and launch trip on lake, per person, \$42.50.

#### TRANSPORTATION

The Glacier Park Transport Co. is operated in the park under franchise from the Department of the Interior. Daily stage service in each direction is maintained between Glacier Park Hotel and St. Mary Chalets, Many Glacier Hotel and Chalets, Waterton, and Going-to-the-Sun Chalets, Lake McDonald Hotel, and Belton Station. A daily bus trip is made from Glacier Park Hotel to Two Medicine Chalets on Two Medicine Lake, allowing sufficient time at the lake to fish or make the launch trip. Regular motorbus service is maintained between Glacier Park Hotel and Belton. On the west side daily bus service is maintained between Belton, the foot of Lake McDonald, and the Lake McDonald Hotel at the head of Lake McDonald, and between this hotel and Logan Pass on the Continental Divide.

The transportation company and launch companies allow each passenger

27

*Glacier National Park . Montana*

to carry with him 30 pounds of hand baggage without extra charge, which is usually sufficient for shorter trips. Trunks are forwarded at extra expense. Arrangements can be made for caring for trunks left at entrances during tour of park or rechecking them for passengers who enter at one side and leave by the other. Storage charges on baggage at Glacier Park Station and at Belton are waived while tourists are making park trips.

#### LAUNCHES AND ROWBOATS

The Glacier Park Hotel Co. operates launch service on Waterton Lake between Goathaunt Camp in Glacier Park, and the Waterton Lake town-site in Alberta, Canada, crossing the international boundary line about half-way up the lake. One way, the fare is 75 cents; round trip, \$1.50.

Twilight launch rides on St. Mary and McDonald Lakes are featured during fair weather.

The Glacier Park Boat Co. operates launch service on beautiful Two Medicine Lake, at a charge of 75 cents each for four or more passengers. For a smaller number the minimum charge for the trip around the lake is \$3. Trips around Josephine and Swiftcurrent Lakes may be made for \$1 each. The Glacier Park Boat Co. also rents rowboats for 50 cents an hour; \$2.50 a day, or \$15 a week for use on the following lakes: Two Medicine, St. Mary, Swiftcurrent, Josephine, Bullhead, and McDonald. Outboard motors may also be rented.

This booklet is issued once a year and *the rates mentioned herein may have changed slightly since issuance*, but the latest rates approved by the Secretary of the Interior are on file with the superintendent and the park operators.

#### ADMINISTRATION

The representative of the National Park Service in immediate charge of the park is the superintendent, D. S. Libbey, Belton, Mont.

William H. Lindsay is United States commissioner for the park and holds court in all cases involving violations of park regulations.

#### NATURALIST SERVICE

Throughout July and August a daily schedule of popular guided trips afield, all-day hikes, boat trips, campfire entertainments, and illustrated lectures is maintained at Many Glacier, Going-to-the-Sun, Roes Creek, Two Medicine, Lake McDonald, Sprague Creek, and Avalanche Auto Campgrounds, the leading tourist centers. Naturalists who conduct local field trips and walks to nearby Hidden Lake and Clements Glacier are stationed at Logan Pass daily from 9 to 4. Cut-flower exhibits are installed

at various hotels and chalets, and a special display of geological and other exhibits is maintained in Many Glacier Hotel.

Requests from special parties desiring ranger naturalist assistance are given every consideration. All park visitors are urged to avail themselves of the services of the naturalists who are there to assist them in learning of the untold wonders that abound everywhere in the park. Acceptance of gratuities for this free service is strictly forbidden.

For complete information on naturalist schedules and types of service offered consult the free pamphlet, Ranger-Naturalist Service, Glacier National Park, which is available at checking stations and information booths.

#### FREE AUTOMOBILE CAMPGROUNDS

A system of free automobile campgrounds has been developed in the park, where the motoring public will find pure water, firewood, cook-stoves, and sanitary facilities, but campers must bring their own equipment. The principal campgrounds have showers, laundry facilities, and rest room, and camp tender and ranger-naturalist services are available. They are located at Avalanche, with a store 5 miles away at Lake McDonald Hotel; Two Medicine, store, one-half mile at Two Medicine Chalets; and Many Glacier, with a store in the campgrounds. Camp tender and ranger-naturalist service is provided also at Sprague Creek and Roes Creek Campgrounds. The store at Lake McDonald Hotel, 1 mile, is closest to Sprague Creek, and that at St. Mary Chalets, 5 miles, serves the campers at Roes Creek. Other designated auto camping areas, which are undeveloped, are at Lower Kintla Lake, Bowman Lake, Quartz Creek, Logging Creek, Fish Creek, Cut Bank Creek, Kennedy Creek, and Walton.

Private cabins are available at Belton, Apgar, head of Lake McDonald, St. Mary, Many Glacier, and Glacier Park Station.

#### POST OFFICE, TELEGRAPH, AND EXPRESS SERVICE

The United States post offices are located at Glacier Park, Belton, Pole-bridge, and (during the summer season) at Lake McDonald Hotel, Lake McDonald, Mont. Mail for park visitors should include in the address the name of the stopping place as well as the post office. Mail addressed to Glacier National Park, Mont., goes to Glacier Park Station.

Telegraph and express service is available at all points of concentration.

#### MEDICAL SERVICE

Qualified nurses are in attendance at the hotels on both sides of the park, and there is a resident physician at Glacier Park Hotel.

## REFERENCES

- ALBRIGHT, HORACE M., and TAYLOR, FRANK J. Oh, Ranger! 1932.
- EATON, WALTER PRITCHARD:  
 Boy Scouts in Glacier Park. 1918.  
 Sky-Line Camps. 1922.
- ELROD, DR. MORTON J. Complete Guide to Glacier National Park. 1924.
- FARIS, JOHN T. Roaming the Rockies. 1930. Pp. 42-80.
- FENNEMAN, N. M. Physiography of Western United States. 1931.
- JEFFERS, LE ROY. The Call of the Mountains. 1922. Pp. 35-39.
- KANE, J. F. Picturesque America. 1935. Pp. 147-169.
- LAUT, AGNES C.:  
 The Blazed Trail of the Old Frontier. 1926.  
 Enchanted Trails of Glacier Park. 1926.
- MARSHALL, L. Seeing America. 1916. Pp. 193-200.
- MCCCLINTOCK, W. Old Indian Trails. 1923.
- MILLS, ENOS A. Your National Parks. 1917. Pp. 148-160, 475-487.
- RINEHART, MARY ROBERTS. Through Glacier Park. 1916.
- ROLFE, MARY A. Our National Parks, Book Two. 1928. Pp. 197-242.
- SANDERS, H. F.:  
 Trails Through Western Woods. 1910.  
 History of Montana, Vol. 1. 1913. Pp. 685-689.  
 The White Quiver. 1913.
- SCHULTZE, J. W. Blackfeet Tales of Glacier National Park. 1916.
- SPERRY, A. L. Avalanche. 1937.
- STEELE, DAVID M. Going Abroad Overland. 1917.
- YARD, ROBERT STERLING. The Book of the National Parks. 1926. Pp. 251-283.

## PUBLICATIONS FOR SALE IN GLACIER NATIONAL PARK

Wild Animals of Glacier National Park . . . . .	\$1.00
Plants of Glacier National Park . . . . .	.50
Origin of Scenic Features of Glacier . . . . .	.20
Geological Survey Map of Glacier . . . . .	.25
Fauna of the National Parks . . . . .	.20
National Parks Portfolio . . . . .	1.50
Portfolio of National Parks and Monuments. (Set of 4) . . . . .	.50

*Glacier National Park . Montana* 30

## FOREST FIRES

*Forest fires are a terrible and ever-present menace. There are thousands of acres of burned forests in Glacier National Park. Most of these "ghosts of forests" are hideous proofs of some person's criminal carelessness or ignorance.*

*Build camp fires only at designated camp sites. At times of high winds or exceptionally dry spell, build no fires outside, except in stoves provided at the free auto camps. At times of extreme hazard, it is necessary to restrict smoking to hotel and camp areas. Guests entering the park are so informed, and prohibitory notices are posted everywhere. Smoking on the highway, on trails, and elsewhere in the park is forbidden at such times. During the dry period, permits to build fires at any camp sites other than in auto camps must be procured in advance from the district ranger.*

*Be absolutely sure that your camp fire is extinguished before you leave it, even for a few minutes.*

*Do not rely upon dirt thrown on it for complete extinction.*

*Drown it completely with water.*

*Drop that lighted cigar or cigarette on the trail and step on it.*

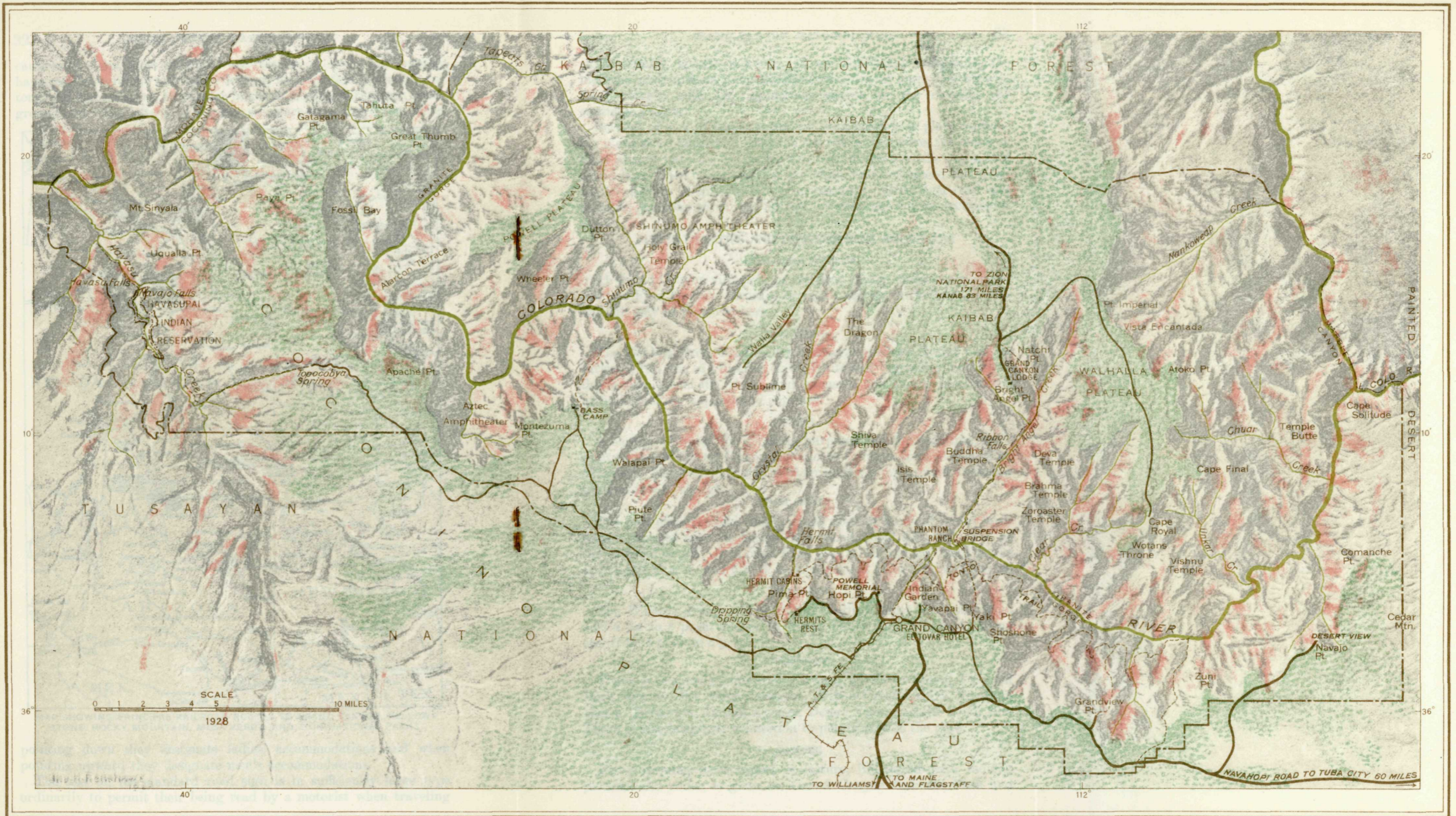
*Do the same with every match that is lighted.*

*Extreme caution is demanded at all times.*

*Anyone responsible for a forest fire will be prosecuted to the full extent of the law.*

*If you discover a forest fire, report it to the nearest ranger station or hotel.*





MAP OF GRAND CANYON NATIONAL PARK

ENGRAVED AND PRINTED BY THE GEOLOGICAL SURVEY

## RULES AND REGULATIONS

[Briefed]

THE PARK REGULATIONS are designed for the protection of the natural beauties as well as for the comfort and convenience of visitors. The complete regulations may be seen at the office of the superintendent and at ranger stations. The following synopsis of the rules and regulations is for the general guidance of visitors, who are requested to assist in the administration of the park by observing them.

**Fires.**—Fires are the greatest menace to the forests of Glacier National Park. Build camp fires only when necessary and at designated places. Know that they are out before you leave them. Be sure your cigarette, cigar, pipe ashes, and matches are out before you throw them away. During periods of high fire hazards, camp fires are not permitted at nondesignated campgrounds.

**Camps.**—Camping is restricted to designated campgrounds. Burn all combustible garbage in your camp fire; place tin cans and unburnable residue in garbage cans. There is plenty of pure water; be sure to get it. Visitors must not contaminate watersheds or water supplies.

**Natural features.**—The destruction, injury, or disturbance in any way of the trees, flowers, birds, or animals is prohibited. Picking wild flowers and removing plants are prohibited. Dead and fallen wood may be used for firewood.

**Bears.**—*Feeding bears is dangerous and is prohibited.* Do not leave foodstuffs in an unattended car or camp, for the bear will break into and damage your car or camp equipment to secure food. Suspend foodstuffs in a box, well out of their reach, or place in the care of the camp tender.

**Dogs and cats.**—When in the park, dogs and cats must be kept under leash, crated, or under restrictive control of the owner at all times.

**Fishing.**—No license for fishing in the park is required. The regular park limit of 10 fish per person, per day, shall govern, except that the total catch shall not have a net weight in excess of 20 pounds and one fish per person, per day. The limit of catch of whitefish shall be 20 fish per person, per day. Five fish per person, per day, shall constitute the limit in the waters of the Two Medicine, Red Eagle, Belly River, and Lake McDonald Valleys. The possession, or use for bait, of salmon eggs or other fish spawn is prohibited. Fishing with multiple spinner baits (lures with more than one spinner on a single line) is prohibited in all park waters.

**Hunting.**—Hunting within the park boundaries is prohibited. All firearms are to be declared and sealed upon entering the park.

**Traffic.**—Speed regulations: 15 miles per hour on sharp curves and through residential districts; 35 miles per hour on the straightaway. Keep gears enmeshed and out of free wheeling on long grades. Keep cutout closed. Drive carefully at all times. Secure automobile permit, fee \$1.

**Rangers.**—The rangers are here to assist and advise you as well as to enforce the regulations. When in doubt consult a ranger.