

# Motorists Guide

## WATERTON-GLACIER

## INTERNATIONAL

## PEACE PARK

MONTANA ALBERTA

U. S. A. CANADA



UNITED STATES  
DEPARTMENT OF THE INTERIOR

HAROLD L. ICKES, SECRETARY  
NATIONAL PARK SERVICE  
ARNO B. CAMMERER, DIRECTOR

**DON'T RUSH THROUGH THE PARK—  
ENJOY IT LEISURELY.**

### INTERNATIONAL PEACE PARK

Pursuant to legislation passed by the Congress of the United States, President Hoover issued a proclamation declaring the Waterton-Glacier International Peace Park established. Similar action was taken by the Canadian Government, and representatives of both countries were present at Glacier Park, Mont., on June 18, 1932, when appropriate dedication ceremonies were held. The purpose of this action was to commemorate the record of long-standing peace and good will between the two countries. For purposes of administration, the component parts of the Peace Park each retain its nationality and individuality and each unit will continue to function as it has in the past.

### GLACIER NATIONAL PARK SECTION

This park is a National playground. Observance of the following rules and suggestions will make your visit pleasant and add to the pleasure of others.

Automobiles and motorcycles will be permitted on all of the park roads between the hours of 6:30 a. m. and 10:30 p. m. The park roads are divided into two systems, those west of the Continental Divide are known as the West Side Road System and those east of the Divide are known as the East Side Road System. The East Side Road System includes those sections of the road between Glacier Park Hotel, St. Mary Chalet, and Many Glacier Hotel, which lie within the limits of the Blackfoot Indian Reservation.

A license to operate an automobile or motorcycle on the park roads must be obtained on entering the park.

The fee for this permit is \$1.00.

All fees are payable in cash only and at points of entrance.

Careful driving is required at all times.

The speed limit is 15 miles per hour on grades and when rounding sharp curves. On straight stretches of road a speed of 30 miles is allowed.

Horns should be sounded when approaching curves, vehicles, pedestrians, or saddle animals.

Muffler cut-outs must be closed at all times within the park boundaries.

When approaching saddle horses in narrow or dangerous places automobiles and engines will be stopped until riders pass. Saddle horses always have the right-of-way.

Teams have right-of-way at all times and at all places. If horses appear nervous, automobiles will take the outer edge of the road and engines will be stopped until horses have passed.

Be careful of your camp fire. Thoroughly extinguish it before leaving, by saturating the fire and earth around it with water.

Camp and park your car only in designated localities.

For the protection of yourself and other visitors, your car must be equipped with good brakes, horn, and lights.

THESE ARE NOT THE REGULATIONS.—There may be obtained from the rangers at the entrances, or from the Superintendent, copies of the Circular of General Information, which contains the prescribed rules and regulations for the government of the park and motor vehicle traffic therein. This circular also contains general information regarding the park.

The Superintendent's office is at Park Headquarters at the west entrance, Belton, Montana; an administration and information office is also maintained at the east entrance, Glacier Park, Mont.

### CREATURES OF THE WILD

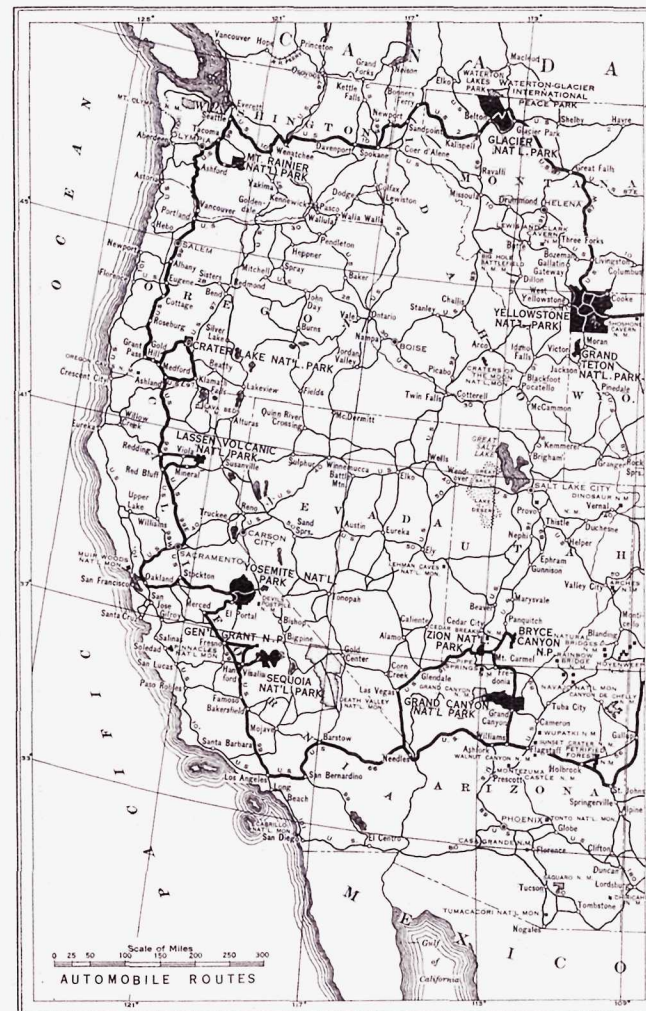
Glacier, once the favorite hunting ground of the Blackfoot Indians and now for 25 years strictly preserved, has a large and growing population of creatures of the wild. Its rocks and precipices fit it especially to be the home of the Rocky Mountain sheep and the mountain goat.

Both of these large and hardy climbers are found in Glacier in great numbers. They are a familiar sight in many of the places most frequented by tourists.

Trout fishing is particularly fine. There are half a dozen western varieties, of which perhaps the cutthroat is the most common. In the larger lakes the Makinaw is caught up to 40 pounds in weight.

So widely are they distributed that it is difficult to name lakes of special fishing importance. Many of the best fishing lakes are seldom visited.

**FOR FURTHER INFORMATION CONCERNING  
GLACIER OR OTHER UNITED STATES  
NATIONAL PARKS ADDRESS  
NATIONAL PARK SERVICE,  
WASHINGTON, D. C.**

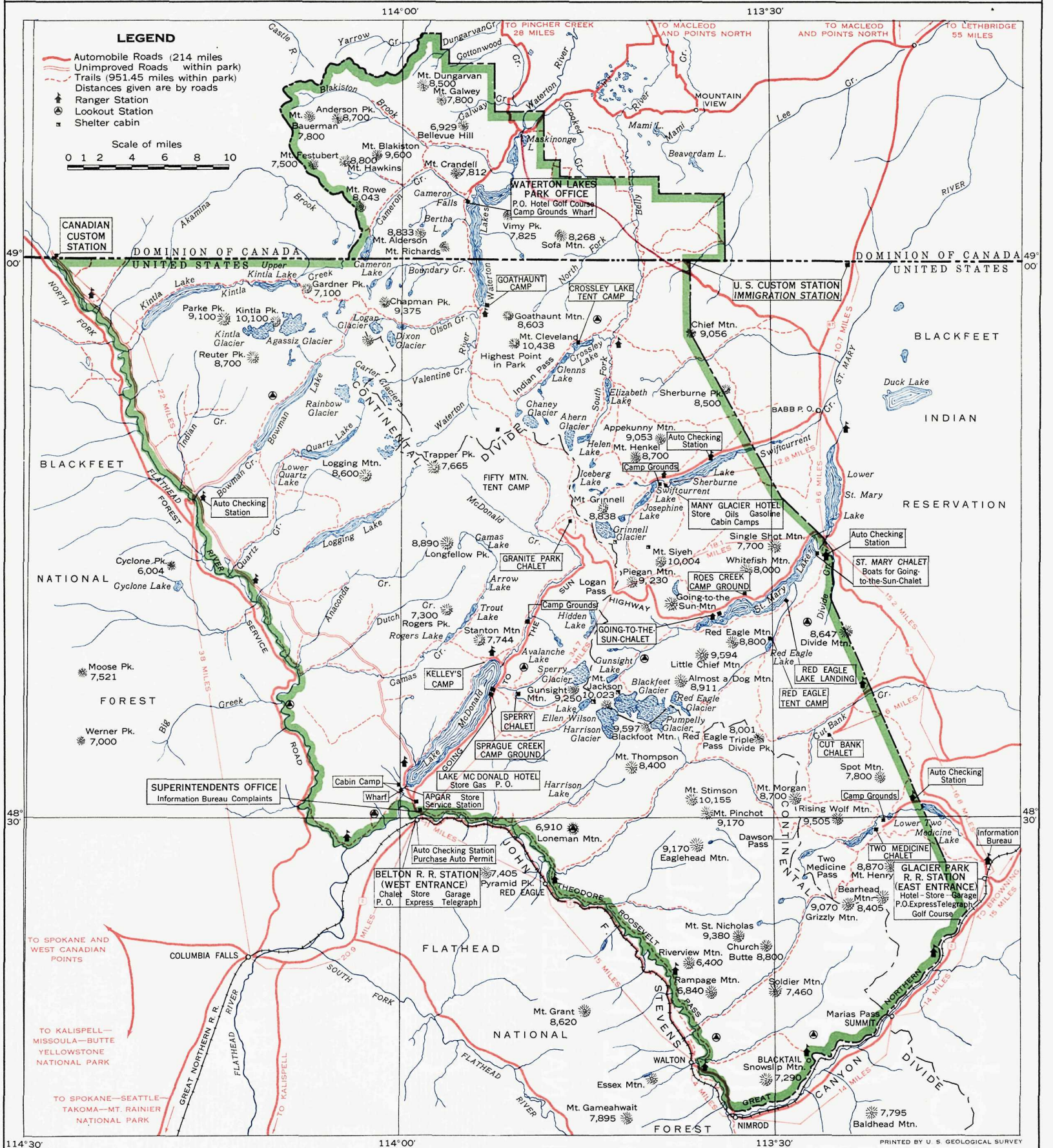


**CAMPING** is permitted throughout the park on specially designated camp sites easily recognized by signs. Leave clean grounds for the next camper.

**DON'T RUSH THROUGH THE PARK—  
ENJOY IT LEISURELY.**

**FOR FURTHER INFORMATION CONCERNING GLACIER  
OR OTHER NATIONAL PARKS ADDRESS**

**NATIONAL PARK SERVICE, WASHINGTON, D. C.**



**GUIDE MAP OF WATERTON-GLACIER NATIONAL PEACE PARK**