

Other Services

ROADSIDE AND TRAILSIDE EXHIBITS — At various locations along park roads and trails. Watch for approach signs along roads.

SELF-GUIDING NATURE TRAILS — Trail of the Cedars at Avalanche Campground; Swiftcurrent Lake Trail in Many Glacier Area; Trick Falls Trail in Two Medicine Area; Water Ouzel Trail from Sun Point to Sunrift Gorge via Baring Falls.

SPECIAL GROUPS—Organized groups desiring special naturalist services, arrange in advance with the Chief Park Naturalist, Park Headquarters, West Glacier, Montana.

Weekly Schedule of Naturalist Programs

Sunday . . . WHAT TO SEE AND DO IN GLACIER
 Monday . . . THROUGH THE YEARS IN GLACIER PARK
 Tuesday . . . WILDERNESS TRAILS
 Wednesday . . . ANIMAL FRIENDS OF GLACIER PARK
 Thursday . . . TREES AND FLOWERS OF THE PARK
 Friday . . . GEOLOGICAL STORY OF THE PARK
 Saturday . . . EXPLORING OUR NATIONAL PARKS

Publications On Sale

These, and other natural history publications, may be obtained throughout the Park: Park Headquarters at West Glacier; Sun Point, Logan Pass and Apgar Information Stations; Many Glacier and Polebridge Ranger Stations; and at stores and gift shops. Write the Glacier Natural History Association, West Glacier, Montana, for a complete list of publications sold. These prices include cost of mailing and handling.

Topographic Map of Glacier National Park \$.55
 Guide to Glacier National Park, G. C. Ruhle 1.60
 Motorist's Guide Going-to-the-Sun Highway, Beatty... .30
 Glaciers and Glaciation, J. L. Dyson30
 Geologic Story of Glacier, J. L. Dyson30
 Trees and Forests of Glacier, D. H. Robinson55
 101 Wildflowers of Glacier, G. W. Sharpe55
 Mammals of Glacier, R. R. Lechleitner 1.10
 Pete and Repete—The National Park Bears 1.15

MISSION 66 — WHAT IS IT?

MISSION 66 is a ten-year development program, now in progress, to enable the National Park Service to help you better enjoy and understand the parks and monuments and, at the same time, to preserve their scenic values for your children and for future generations.

Under the National Park Service's MISSION 66 program, additional naturalists have been provided this year to help you gain a better understanding and appreciation of the wonders of Glacier National Park.



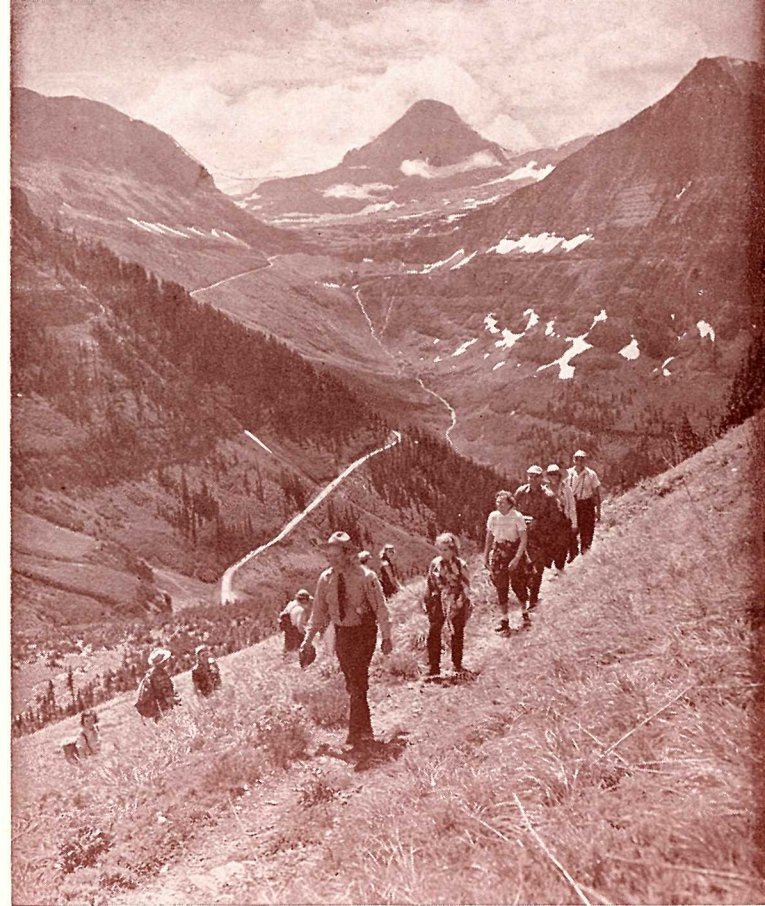
Please
 Don't Be
 A Litterbug

The GLACIER NATURAL HISTORY ASSOCIATION is a non-profit organization pledged to aid in the preservation and interpretation of the scenic, scientific and historic heritage of Glacier National Park for the benefit and enjoyment of its visitors. It cooperates with the National Park Service by assisting the Division of Interpretation of Glacier National Park in developing its library, museums and wayside exhibits; assists in the acquisition of non-federally owned lands within the Park; and cooperates with the Government in the interests of Glacier National Park.

Revenues obtained by the Association are devoted entirely to the purposes outlined. Any person interested in the furtherance of these purposes may become a member of the Association by payment of the annual fee of one dollar. Gifts and donations are also accepted for land acquisition or general use.

This program is provided free of charge as a public service by the Glacier Natural History Association.

O'NEIL PRINTERS  KALISPELL, MONTANA



NATURALIST PROGRAM



JULY & AUGUST, 1960

Glacier National Park

EDWARD A. HUMMEL
 SUPERINTENDENT

FRANCIS H. ELMORE
 CHIEF PARK NATURALIST

JAMES W. CORSON, ASSISTANT CHIEF PARK NATURALIST
 ROBERT A. GRUM, PARK NATURALIST

NATURALIST

ACTIVITIES

Headquarters—Apgar Area

NATURALIST LABORATORY AND WORKSHOP—Not a museum. At Park Headquarters. Open daily 8:00 a. m. to 5:00 p. m. Mounted birds and animals and scientific study collections. Reference library and information. Publications and maps on sale.

LAKE McDONALD BOAT TRIPS — Accompanied by Ranger Naturalist leaves Apgar boat dock at 9:30 a. m.

EVENING PROGRAM — Apgar Amphitheater at Apgar Campground on shore of Lake McDonald. Nightly. Half-hour musical program starts at 8:00 p. m. Followed by talk illustrated with color slides or movies. (See topics on back page.)

Lake McDonald—Avalanche Areas

Sperry Glacier

Naturalist-conducted trip leaves Lake McDonald Hotel, 8:00 a. m. Monday, Wednesday, Friday; returns about 4:30 p. m. Tuesday, Thursday, Saturday. Carry lunch. Overnight accommodations at Sperry Chalet. (Hotel to Chalet, about 6½ miles; Chalet to Glacier, about 3½ miles.)

AVALANCHE LAKE—Nature walk leaves from rear of Avalanche Campground at 9:00 a. m. daily. Interesting pothole canyon, deep glacial cirque with high waterfalls and colorful lake. Round trip 4 miles; time about 3 hours.

LAKE McDONALD — Naturalist-accompanied boat trip. Leaves Lake McDonald Hotel dock at 1:30 p. m. About 45 minutes.

EVENING PROGRAM—Lake McDonald Hotel Recreation Hall 8:30 p. m. nightly except Sunday. Illustrated with natural color slides or movies. (See topics on back page.)

CAMPFIRE PROGRAM—Avalanche Campground. Nightly except Sunday, 8:30 p. m. Informal talks and discussions on topics listed on back page.

Other walks as announced at evening programs.

Logan Pass

INFORMATION SERVICE—Naturalist on duty from 9:00 a. m. to 6:00 p. m. daily. Orientation path; free telescope during open hours for viewing mountain goats and scenery. Publications and maps on sale.

HIDDEN LAKE—Naturalist conducts easy walk to cirque lake overlook at 10:00 a. m. and 2:00 p. m. daily. Round trip about 4 miles; about 2 hours.

GARDEN WALL—All day nature walk along Garden Wall to Granite Park Chalet. Leaves Logan Pass 9:00 a. m. daily. About 11 miles. Carry lunch.

St. Mary—Rising Sun—Sun Point Areas

SUN POINT—Information Office. Naturalist on duty 8:30 a. m. to 5:00 p. m. daily. Outstanding scenic and photographic area only a short distance off main road. Flower exhibit, exhibits, maps, viewfinder, nature trail. Publications and maps on sale.

ST. MARY LAKE—Naturalist-accompanied boat and trail trip. Launch leaves Rising Sun dock at 9:30 a. m. daily. Stop at Sun Point for naturalist-conducted walk to Baring Falls. Walking party catches 11:00 a. m. boat at Sun Point to continue return boat trip. Round trip walking distance about 3½ miles.

ST. MARY LAKE — Naturalist-accompanied boat trip. Launch leaves Rising Sun dock 1:30 and 3:00 p. m. daily.

EVENING PROGRAM — St. Mary Dormitory 8:30 p. m. nightly. Illustrated with natural color slides or movies. Follow directional signs from intersection near St. Mary Entrance Station. (See topics on back page.)

CAMPFIRE PROGRAM—Rising Sun Campground. Nightly except Sunday, 8:30 p. m. Informal talks and discussions on topics listed on back page.

Many Glacier

GRINNELL GLACIER—All day trip. Leaves hotel lobby at 8:30 a. m. daily. Round trip 12 miles. (9:00 a. m. boat connects with walkers at head of Lake Josephine, reducing walking distance nearly one-half.) Carry lunch. Naturalist meets horseback party at the Glacier.

GRINNELL LAKE—Naturalist-accompanied boat and trail trip. Leaves hotel dock at 9:00 a. m. and 2:00 p. m. daily. Round trip walking distance 2½ miles, mostly level.

ICEBERG LAKE—All day trip. Leaves Swiftcurrent Motel at 9:00 a. m. Monday, Wednesday, Friday. Round trip about 10 miles. Carry lunch.

EVENING PROGRAM—Hotel Convention Hall. 8:30 p. m. nightly except Sunday. Illustrated with natural color slides or movies. (See topics on back page.)

CAMPFIRE PROGRAM—Swiftcurrent Campground. Nightly at 8:30 p. m. (Informal talks and discussions on topics listed on back page.)

Other walks as announced at evening programs.

Two Medicine

TWIN FALLS—Leaves daily except Thursday and Friday at 3:00 p. m. by launch from Two Medicine Lake boat dock. Walk of about two miles to Twin Falls and back. Return to dock via launch about 5:00 p. m.

NATURE WALK—Leaves campfire circle in campground at 9:00 a. m. daily. To nearby points of interest. Take lunch. Return about 2:00 p. m.

CAMPFIRE PROGRAM — Two Medicine Campground. Nightly except Thursday and Friday at 8:30 p. m. Informal talks and discussions on topics listed on back page.

East Glacier Park

EVENING PROGRAM — Glacier Park Lodge, Moccasin Room, 8:30 p. m. Thursdays only. Special movie or slide program.

NOTE: All guided trips and campfire programs subject to cancellation if weather is inclement or if less than five persons are present.