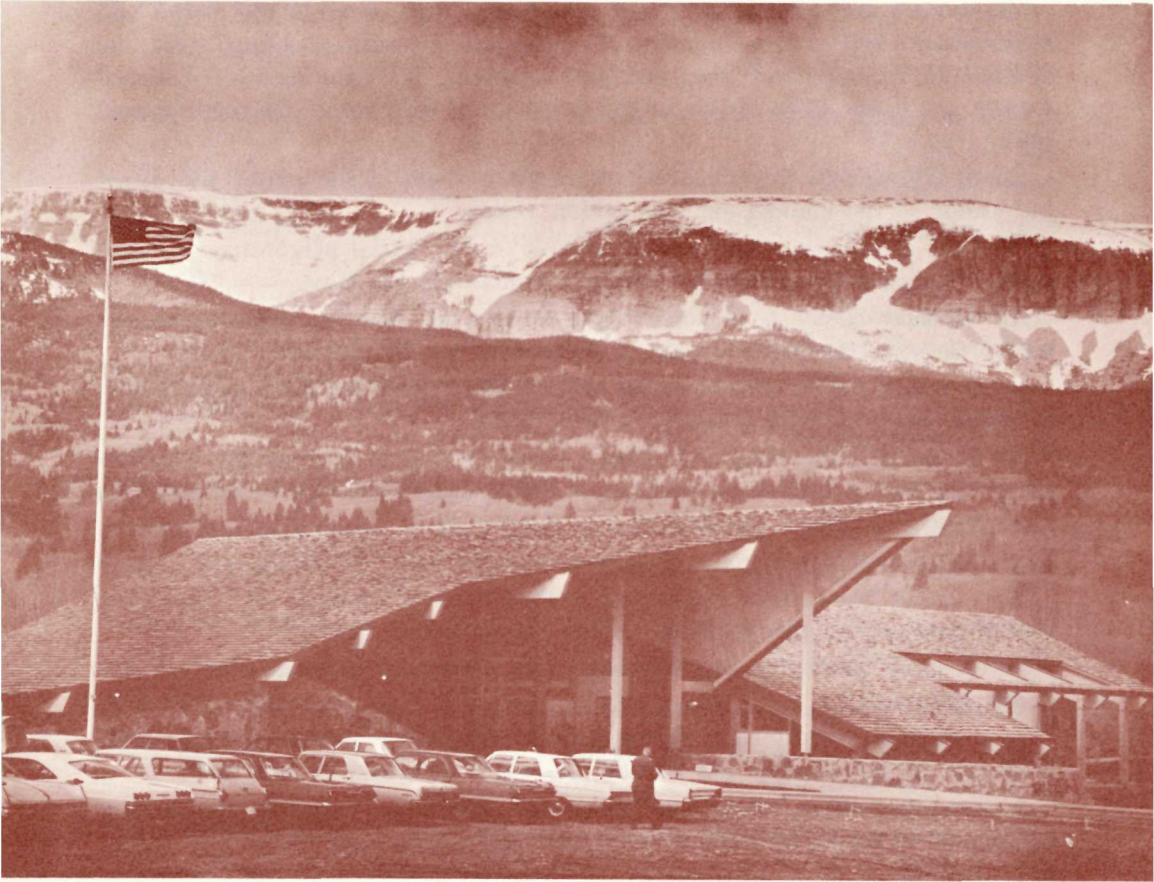


DEDICATION PROGRAM

St. Mary Visitor Center

GLACIER NATIONAL PARK, MONTANA



U. S. DEPARTMENT OF THE INTERIOR

Stewart L. Udall, Secretary

National Park Service

George B. Hartzog, Jr., Director



ST. MARY VISITOR CENTER

At the dedication of this beautiful new Visitor Center it is fitting that we recognize not only the completion of another MISSION 66 project, but also the celebration of the National Park Service's GOLDEN ANNIVERSARY. This Visitor Center, in the beautiful St. Mary Valley, was designed with roof lines echoing the distant mountains, and large windows to give the visitor an unobstructed and matchless view of the valley, lake, waterfalls, and snow-covered peaks.

Native rock and wood attractively complement each other in the design and construction. The center includes an information counter, lounge area, an auditorium, exhibits, restrooms and parking areas. The exhibits were designed to help orient the Park visitor to the outstanding features of Glacier National Park.

The lobby exhibits introduce the interpretive theme of the center and direct the visitor to the audiovisual and exhibit rooms.

Over the information counter is a large (5' x 15') aerial perspective painting of the Park, oriented from the visitor's location at St. Mary.

An unusual specimen of fossil algae is here on display, encouraging the visitor to enter the exhibit room to learn more of the geological story.

Other panels depict activities that are available parkwide, such as naturalist activities, boating, fishing and horseback riding.

An automatic slide program "Glacier Gold—And How to Find It" provides the visitor with a glimpse of park areas not covered elsewhere in the exhibits.

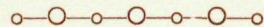
An exhibit "What's the Weather Today?" has a wind-speed indicator, a thermometer and a barometer. This completes the lobby exhibits.

The exhibit room, when completed, will contain 18 exhibits to explain the Park's geology and glaciation as well as the flora and fauna.

Seven small habitat groups will show how birds and animals adapt to life in the mountains.

In the 270-seat auditorium an audiovisual program is presented every half-hour and in the evening the regular naturalist program is presented.

A naturalist office, audiovisual projection room, and heating and cooling equipment is found upstairs.



ENGINEERING AND CONSTRUCTION

Architects and Engineers (Through Design and Construction,
San Francisco Planning and Service Center, NPS.) _____
_____ Brinkman and Lenon, Kalispell, Montana
General Contractor _____ Roy L. Shelby, Cut Bank, Montana
Roads and Parking Areas _____ Kiely Construction Co., Butte, Montana

Program provided as a public service by the Glacier Natural History Association, Inc.
Cover photo: Mel Ruder, Hungry Horse News.

DEDICATION PROGRAM

2:00 p. m. (MST), Sunday, August 28, 1966

Master of Ceremonies _____ George B. Hartzog, Jr.
Director, National Park Service
Washington, D. C.

Usherettes _____ Park Ranger-Naturalists

Musical Number _____ Flathead High School Summer Band
Kalispell, Montana
DeForest Shotwell, Director

Presentation of Colors _____ Blackfeet Indian Reservation American Legion
Post No. 127
Browning, Montana

National Anthem _____ Flathead High School Summer Band

Invocation _____ Fred A. Nebrig, Director,
A Christian Ministry in
Glacier National Park

Welcome to Glacier National Park
and Introduction of Master of Ceremonies _____ Keith Neilson, Superintendent,
Glacier National Park

Introduction of Special Guests _____ George B. Hartzog, Jr.
Director, National Park Service

Musical Number _____ Flathead High School Summer Band

Dedicatory Address _____ Hon. Lee Metcalf
U. S. Senator, Montana

Musical Number _____ Flathead High School Summer Band

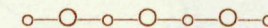
Benediction _____ Father Paul Kingston, Assistant Pastor,
Little Flower Parish, Browning, Montana

Retirement of Colors _____ Blackfeet Indian Reservation American Legion
Post No. 127

Ribbon Cutting.

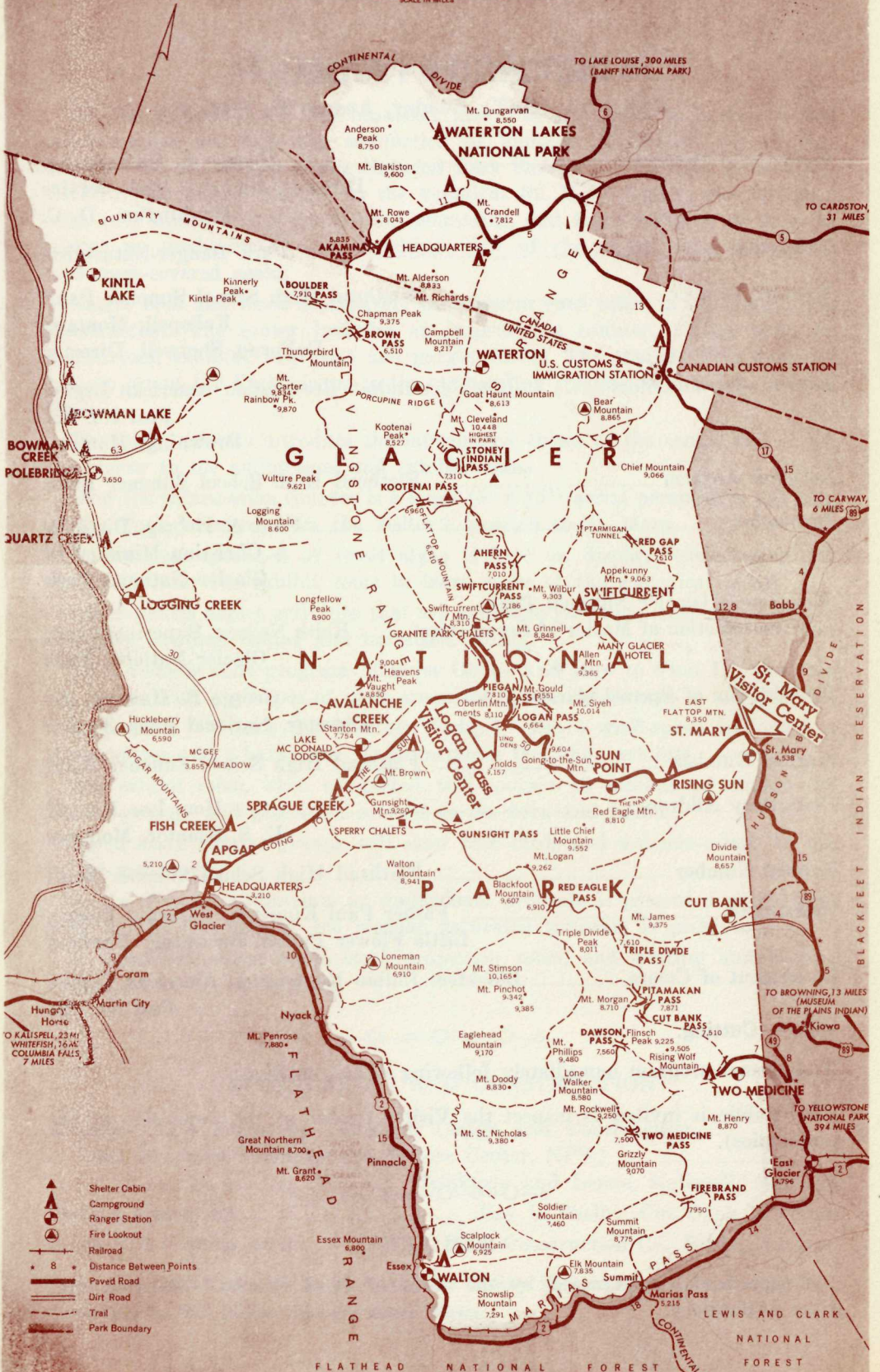
Audiovisual program immediately following ribbon cutting.

(The public is invited to inspect the Visitor Center at the conclusion of the ceremonies).



EXHIBITS

Designed and constructed by the National Park Service's Western Museum Laboratory.



- Shelter Cabin
- Campground
- Ranger Station
- Fire Lookout
- Railroad
- Distance Between Points
- Paved Road
- Dirt Road
- Trail
- Park Boundary