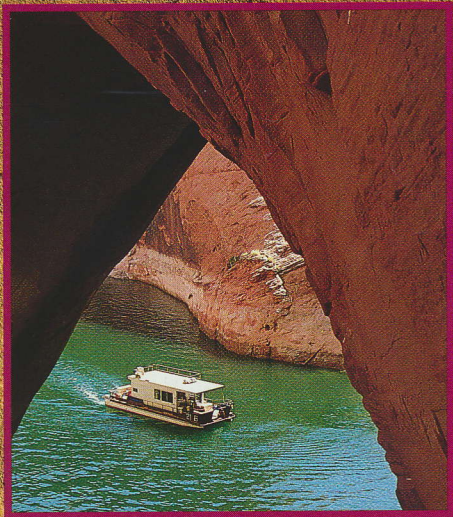


LAKE POWELL

Boat Rentals • Lodging • Boat Tours • Packages



*Glen Canyon National
Recreation Area*

AMERICA'S
NATURAL
PLAYGROUND®



Lake Powell, Glen Canyon National Recreation Area, Utah/Arizona.

Big. Bold. Beautiful. 186 miles long; 1,960 miles of shoreline. Massive sandstone cliffs and sandy beaches surrounding clear runoff waters, forming a hundred intriguing canyons. A 12-month playground to delight the hiker and camper as well as the boater, skier and fisherman. Intimate enough to cradle dreams, nurture hopes, foster friendships.

TABLE OF CONTENTS

Houseboats.....	3
Small Boats.....	5
Water Toys.....	7
Boat Terms, Conditions.....	8
Accommodations.....	9
Boat Tours.....	13
Map.....	14
Floats, Whitewater.....	15
Rainbow Bridge.....	16
Explorer Packages.....	17
National Park Service.....	21
Videos, Books.....	22
Retail Goods.....	23
How To Make Reservations.....	25



HOUSEBOATS

There's simply no better way to enjoy all that Lake Powell has to offer than from behind the wheel of one of our rental houseboats. With 1,960 miles of stunning lake shoreline to explore, you'll never run out of new places to sightsee, fish, and play. So if you've always wanted to be captain of your own ship, this is the perfect opportunity — and the perfect lake — to do it.

Piloting a houseboat is as easy as driving a car. Just follow a good map

and National Park Service buoys, and navigating will be a cinch.

Our houseboats come in three sizes and all feature the creature comforts of home: a bathroom with a hot shower, comfortable beds, a refrigerator/freezer, a fully-equipped kitchen including stove and oven, and a propane grill.

A Fishing Bonanza — Lake Powell, once known mainly for its largemouth bass and crappie fishing, now includes striped and small-mouth bass, plus walleye. Don't miss your chance to top one of these:

Current Records:

Largemouth 10 lbs., 2 oz.
Smallmouth 4 lbs., 4 oz.
Striped Bass 48 lbs., 11 oz.
Walleye 9 lbs., 15 oz.
Brown Trout 17 lbs.
Catfish 24 lbs.
Crappie 2 lbs., 14 oz.
N. Pike 15 lbs., 14 oz.

Houseboats

Sizes: 36' sleeps 6
44' sleeps 8-10
50' sleeps 12

Standard Features: Railed walkways; range and oven; refrigerator; gas grill; ice chest; cabin heater; 12-volt light system; shower; toilet; bunk beds; drapes; all weather cabin; two multi-compartment pontoon floats; two 60-horsepower outboard engines.

Safety

Features:

Fire extinguishers; life preservers; anchor; sound device; night light (as required by the Coast Guard).

Supplies Included: Silverware; pots and pans; biodegradable soap; plates; cups; trash bags and liners; buckets, mop, dust pan and broom; toilet tissue.

Water Supply: 40 gallons of drinking water on board; fresh water available at all marinas; unlimited non-drinking supply for showers, washing dishes, etc.

Toilets: Boats are equipped with a 100-gallon sewage holding tank. Each marina has pump-out facilities, if needed.

Limit of Responsibility: We are not responsible for loss of running time due to equipment failure, weather, illness, accidents or changes in plans.



bring a compass, a map of the area, a fishing guidebook and gear, binoculars, a battery-operated tape deck, and a flashlight. *There are no electrical outlets or generators on board.*

Operation: We recommend having two capable boat operators on board at all times. Operators must go through a brief check-out procedure (30 minutes to an hour) with an instructor at the marina. No special skills are needed — just basic boating rules and common courtesy.



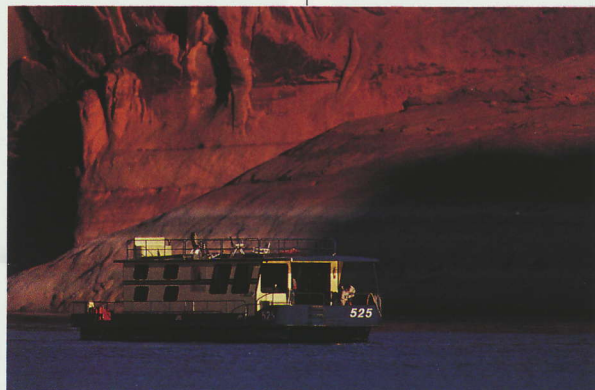
Rent a houseboat March 1-May 13, and we'll let you keep the boat an extra day for every day the sun doesn't shine!!

Maps: A necessity for first-time boaters. Available at all marina stores and boat rental offices or by calling 800-528-6154.

Free National Park Service maps are available at each NPS Visitor Center.

Houseboats serve as a base for family reunions (above) and/or general cruising and exploring (below).

What to Bring: Bedding; pillows; linens; towels; a shovel and any on-shore camping equipment if desired. You may also want to



SMALL BOATS

When you're ready to get out on the lake and really have fun, we've got the small boat you need, all gassed up and ready to go. Choose from our wide selection of sizes, horsepower and features. Whether you're skiing, towing water toys, camping, fishing or just setting out to explore the beautiful nooks and crannies of Lake Powell, we've got your boat! Small boats also make great houseboat tagalongs.

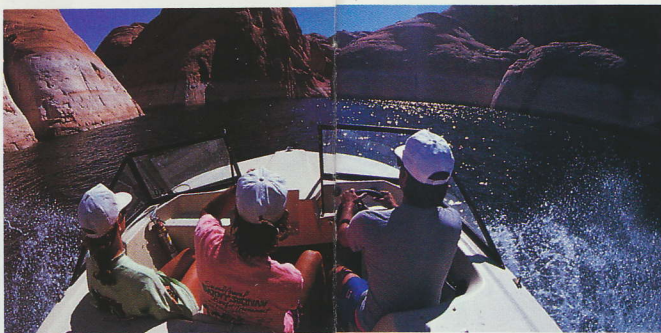
Note: Canopies were removed for photos of 18', 19' and patio boats.

18' Runabout

This multi-purpose boat features sturdy fiberglass hull with 120-horsepower motor. Easily pulls all our water toys. Includes storage area for camping gear or other necessities beneath bow. High gunwales make this beauty ideal for family fishing or cutting through rough water. Seats eight, six comfortably. One-half canopy. Tows well behind a houseboat.

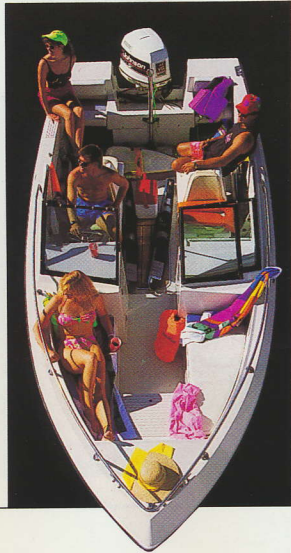


Our boats double for family fishing (left), skiing, and/or general exploring (below).



19' Runabout

Our largest, most powerful (150-horsepower) all-purpose boat. Excellent for skiing and pulling other water toys as well as family camping and fishing. Sturdy fiberglass hull. Open bow. Spacious storage areas. Half-canopy. Seats nine passengers.



Patio Boat

This aluminum pontoon boat is ideal for leisurely cruising the lake during the day, camping, or just relaxing with family and friends. Includes lots of storage space, and full, fixed canopy. Beaches nicely, easy to get on and off. Not designed for rough water traveling or towing water toys. Seats eight.



Make The Most Of Your Boat Trip

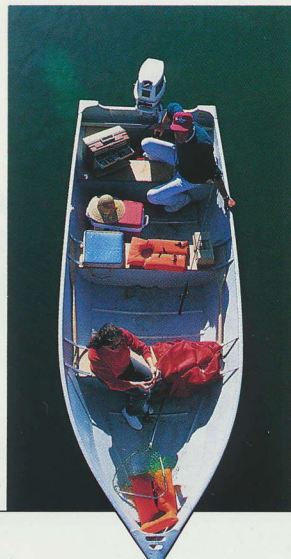
To make your boating experience safer and more enjoyable, we have a complete video and publications library featuring selections on the Lake Powell experience, and many other related topics. See the Learn More section for details.

Boating Safety

If you've made a deposit on a small boat or houseboat and wish to view a 12-minute video on boating safety recommended by the National Park Service, we'll send you a copy. Return it when you check out your boat. Or, each boat rental office offers the video daily. We suggest you view it, at home or at your marina.

16' Skiff

This smaller boat is ideal for short trips and day use. It also makes a great houseboat tagalong. Wooden seats. Aluminum V-hull. Motor steers by hand from back seat. Well-suited to cove and shoreline fishing. Seats six.



WATER TOYS

Ready to feel like a kid again? Just think of Lake Powell as a 160,000-acre bathtub and consider our boats, floats, boards and tubes as your toys. Then go ahead and play and splash as much as you want. (Just don't pull the drain plug.)



Kneeboard

Show off your aquatic agility with our kneeboard. Includes raised knee-well divider, raised and padded ankle supports, tow line and safety flag. Features removable strap and wide "V" tail.

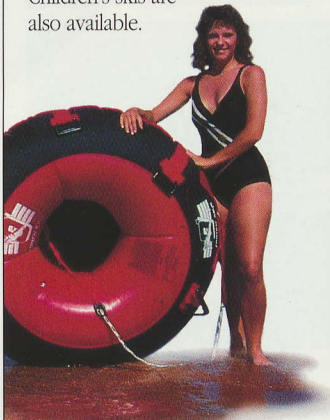
WaveRunner

Rev up the excitement with this easy-to-ride WaveRunner. Designed for one or two people, it features an engine with a lively jet drive, plus two convenient storage compartments. Reaches speeds up to 35 mph.



Ski Package

Lake Powell is a water-skier's paradise. We've got a quality ski package for rent with everything you need — ski vest, tow rope, safety flag and two skis (either can be used for slalom skiing). Children's skis are also available.



Ski Tube

Our ski tube is designed to give you the sensation of floating on the water. Features webbed seat for extra comfort. Package includes tow rope and safety flag.

TERMS & CONDITIONS

Houseboats

Deposits: Your houseboat deposit is a confirmation of your reservation, as well as a damage deposit. Your deposit does not apply toward the rental fee and is due in our office within 14 days after making your reservation (otherwise your reservation will be automatically cancelled). Damage deposits will be refunded (in the same method of payment) when boat is returned on time, in the same condition as it was checked out.

Payment: Full houseboat payment is required 45 days prior to boarding. Full rental fee (minus your deposit) will be retained unless reservation cancellation is received in writing 30 days prior to boarding. Cash, checks or major credit cards are all acceptable for rental and/or deposit payments. However, we request no personal checks within 30 days of arrival.

Check-out/Check-in: Renter must be at least 18 years old. All houseboats are rented by the day. Houseboat check-out is 8:00 a.m. Check-in is 2:00 p.m. on the last day of the contract. Houseboats may not be loaded until contract is signed and check-out is completed.

Note: Check-out with instructor takes approximately 30 minutes to an hour.

Damage Deposit Refund Policy: Service charges will be assessed based on when we receive written notice of cancellation:

91-120 days	
prior to arrival.....	\$75
46-90 days	
prior to arrival.....	\$150
Less than	
45 days	
prior to arrival.....	\$350

Fuel: Tanks are filled before check-out. Refueling is the renter's responsibility.

Waiver of Liability: An optional waiver of liability, limiting your liability responsibility to \$250 in the event the boat is damaged, may be purchased for an additional \$13.80 per day. Applicable taxes are not included.

Small Boats

Rental Day: Rental day begins when the marina opens and ends one hour before the marina is scheduled to close the same day. Marina operating hours vary from season to season.

Liability Waiver: An optional waiver of liability, limiting your liability responsibility to \$250 in the event a boat is damaged, may be purchased for an additional \$6.00 for 16' skiffs, \$7.25 for small boats and \$9.50 for patio boats. Applicable taxes not included.

Damage Deposit: Full deposit will be retained unless reservation is cancelled in writing 10 days prior to boarding.

All Boats

Limit of Responsibility: We are not responsible for loss of running time due to equipment failure, weather, illness, accidents or changes in plans.

Rebates: Will not be issued for late arrivals or early returns.

Damages: Charges will be made for damaged boats, props, and other lost/damaged items.

ACCOMMODATIONS

Designed To Suit Every Taste And Budget

From the awesome scenery that unfolds behind every bend on the lake, to our wide range of comfortable accommodations on the land, there's something to please everyone staying at Lake Powell.

If you're looking for our most upscale accommodations with all the amenities, take a closer look at Wahweap, near Page, AZ, and Defiance House, Bullfrog, UT. Both lodges offer rooms with sweeping views of the lake. Facilities for the physically challenged are included.

Or there are the cozy guest rooms of Lake Powell Motel near Wahweap, complete with an overview of the lake.

Perhaps you'd enjoy the privacy and spaciousness of one



Exquisite dining in Wahweap's Rainbow Room.



Wahweap Lodge pampers its guests.

of our freestanding housekeeping units at Bullfrog, Hall's Crossing and Hite marinas. They're especially nice for families because they offer all the necessities — from tub and shower to cooking utensils, so you'll feel right at home on the lake.

And finally, there's plenty of room to bring your own "home" to Lake Powell. We offer RV parks with full hook-ups and ancillary facilities.

Wahweap Lodge And Defiance House Lodge

Overlooking spectacular lake panoramas, each lodge offers a fine-dining restaurant, gift shop and lounge. Of course, all of the rooms feature air conditioning and televisions. During the summer, you'll enjoy Wahweap's swimming pool with a grand view of the scenery. Both lodges operate fast-food restaurants for those on the go during our busiest months.



Many Wahweap guest rooms feature spectacular views.

Lake Powell Motel

Perched atop a bluff overlooking Lake Powell and Wahweap Lodge, Lake Powell Motel offers cozy, comfortable rooms affordably priced all year long.

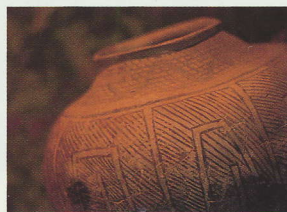


Housekeeping Units

These spacious units will be your home away from home. Bullfrog, Hall's Crossing and Hite marinas offer everything you'll need for a weekend or week. Features include stove and oven,



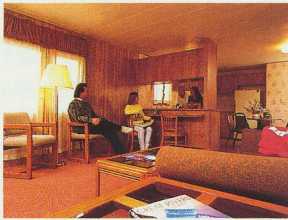
You'll enjoy all the amenities at Bullfrog's Defiance House Lodge.



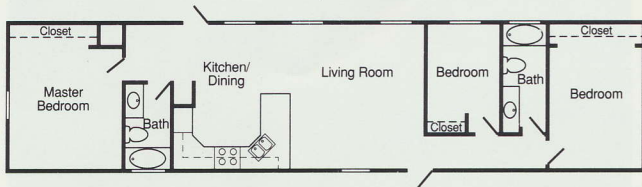
Centuries-old Anasazi pottery from Glen Canyon is displayed in Defiance House Lodge.

Overlooking Bullfrog Resort & Marina.

refrigerator, linens, kitchen dishes and utensils, living room, three bedrooms and one or more baths with combination shower/tub. Electricity and garbage collection included; telephone and television not included.



Our Housekeeping Units offer you the comfort of home.



RV Parks

If you prefer to bring your "home" with you, we have everything you need at Wahweap, Bullfrog and Hall's Crossing. Lights, water and sewer hook-ups are available, or you can just hook up your air conditioner or heater. Facilities include restrooms, showers and coin-operated laundry. LP gas is also available. A convenient supply store is within the RV park at Wahweap and Hall's Crossing and nearby at Bullfrog.

A Housekeeping setup is ideal for families or couples.

Houseboats

Sleep beneath the stars aboard one of our houseboats. For information on this unique multi-day accommodations option, see the Houseboats section.

The Perfect Setting To Mix Business With Pleasure

Lake Powell's soaring canyons, bright sunshine and sparkling waters can serve as both a boardroom and a playground for your next group meeting or seminar. Indoors, Wahweap Lodge offers 12,000 square feet of meeting and banquet space in five rooms, complete with food and beverage service.

Outdoors, pick a beach from among hundreds of miles of shoreline. A unique option is meeting and dining aboard our 95-foot Canyon King paddle-wheeler. Activity choices include boat tour packages and float trips with Wilderness River Adventures. There's a 9-hole golf course, tennis, hiking, bicycling, dam and museum tours, and more available near Wahweap. In short, we can help make your next meeting your most successful meeting ever. For meeting planner information, call (602) 331-5252.



We are versatile in accommodating your special meeting needs.



Wahweap amenities include a spacious pool, a seasonally operated "fast food" restaurant and Southwest Gifts, featuring special gifts and clothing plus a wide selection of wines.

Terms And Conditions

Deposits/Refunds: One night's rate required in advance as a deposit to reserve room or camper/RV space; refundable in full if cancelled 24 hours in advance. Taxes included.

Children: Lodges, motel, and housekeeping – free under 18 in same room. RV space – free under 6.

Check-In/Check-Out: 3:00 p.m. to 11:00 a.m., except RV Park which is 11:00 a.m. – 11:00 a.m.

Room Location: Can be requested but not guaranteed.

Pay Phones: Available at all properties except Dangling Rope.

Sharps Container: Available at front desk and/or boat rental office.

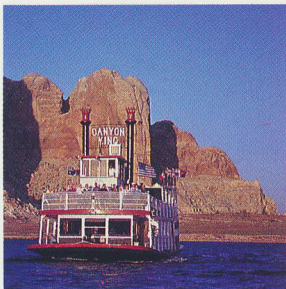


Mix business with pleasure at Lake Powell.

From shrimp scampi to other delectable entrees, dining in a remote canyon can be especially tasteful.



BOAT TOURS



Embark on an adventure aboard the Canyon King paddlewheeler.

Our tour boats offer a relaxing, pleasant way to take in the scenic delights of Lake Powell. Hop aboard and let us show you the amazing sites and magical places in style and comfort. Just sit back and take it all in, while your tour guide describes the history, geology and folklore of the scenic points along the way.

Wahweap Bay Paddlewheeler

Departs: Daily at 11:00 a.m., 12:30 p.m., 2:00 p.m. Wahweap only.

Length: Approximately 1 hour.

Highlights: A lovely ride aboard the authentic 95-foot steam-powered paddlewheel riverboat "Canyon King." Sights include Castle Rock, seen in the film "Greatest Story Ever Told."

Sunset Cruise (with or without dinner)

Departs: Schedule varies with time of sunset. Check with Wahweap tour departure desk.

Length: 2½ hours.

Highlights: An unforgettable evening aboard the romantic Canyon King paddlewheeler. You'll see the dramatic late afternoon color transformation of jagged Colorado sandstone plateaus. Buffet dinner optional.

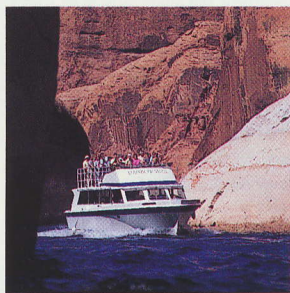
Drinks are available for all passengers. May be chartered for private groups of 20 or more.

All-Day Rainbow Bridge

Departs: 8:00 a.m./Bullfrog, 9:00 a.m./Wahweap.

Length: Approximately 7 hours.

Highlights: Docks at Rainbow Bridge National Monument allow passengers to walk to and photograph the tallest natural bridge in the world (approximately one-half mile round trip). Leisurely cruise one or more major canyons. Includes a box lunch. (Bullfrog stops at Hall's Crossing with advanced reservations only.)



Relax and enjoy the views from a tour boat.

Half-Day Rainbow Bridge

Departs: 7:30 a.m. & 1:00 p.m. daily/Wahweap only.

Note: Only one daily departure (11:00 a.m.) Nov. 1–March 31.

Length: Approximately 5 hours.

Highlights: Cruise main channel to Rainbow Bridge National Monument. Time allowed for a walk to Rainbow Bridge (approximately one-half mile round trip). Lunch not included.

Navajo Tapestry

Departs: 9:30 a.m. & 1:30 p.m. daily/Wahweap only.

Length: Approximately 2½ hours.

Highlights: Glide among the tapestry-like walls of Antelope Canyon. Cruise through beautiful Navajo Canyon.

Canyon Explorer

Departs: 5:00 p.m. daily/other times by arrangement/Bullfrog only.

Length: Approximately 2½ hours.

Highlights: A "Captain's Choice" tour. Possibilities include such intriguing canyons as Forgotten (home of Defiance House), Moki (including a sandstone-gouged Indian "stairway") and Lost Eden.

Packages

For information about packages combining boat tours and lodging, see the Packages section.

Terms And Conditions

Boat Tours

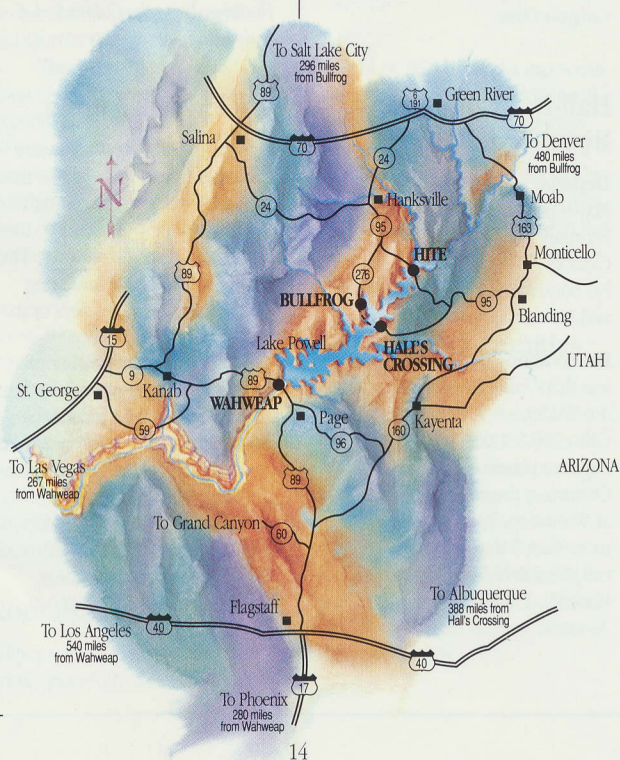
Check-in: Please check with the Boat Tours desk at least 30 minutes prior to departure.

Fares: Children's fares apply to kids under age 12; children age 2 and younger are free.

Boat Rest Room Facilities: Boats carrying 6 or more passengers are equipped with toilets.

Pets: Sorry, no pets are permitted on tour boats.

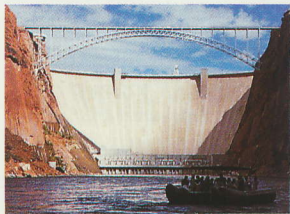
Reservations/Cancellations: To reserve a boat tour, a guarantee or full payment is required. Full payment is transferable or refundable if notice of cancellation is received 24 hours in advance of departure. Off-season tour departure times are subject to daily cancellation/consolidation. Advance reservations are recommended year-round.



FLOAT TRIPS & WHITE-WATER RAFTING

For an unforgettable experience, let us take you on a gentle raft float down the Colorado River. Skilled crews will guide you through the steep canyon walls on comfortable, flexible, and safe neoprene rafts.

It's a 15-mile adventure into the last undammed section of the Colorado River that John Wesley Powell named Glen Canyon. You'll see soaring sandstone cliffs rising 2,400 feet above river level. And you'll get a close look at ancient Indian petroglyphs. The trip concludes downstream at historic Lees Ferry with its early settler's cabins — a must for photographers.

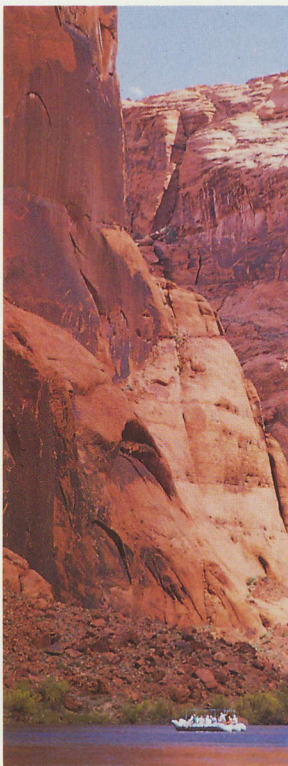


Float trips depart from near Glen Canyon Dam.

Half-Day Colorado River Float Trip

Departs: 7:00 a.m. and 1:00 p.m. May – September; 11:00 a.m. February 15 – April 30 and October 1 – November 15. No Sunday trips in February and November.

Reservations: For reservations less than 7 days in advance, visit the Wilderness River Adventures Office, 50 S. Lake Powell Blvd., Page, or phone 602-645-3279. Or contact the reservation desk at Wahweap. For reservations more than 7 days in advance, call 800-528-6154 (in Greater Phoenix, 278-8888).



Floating down the Colorado is a truly unforgettable experience.

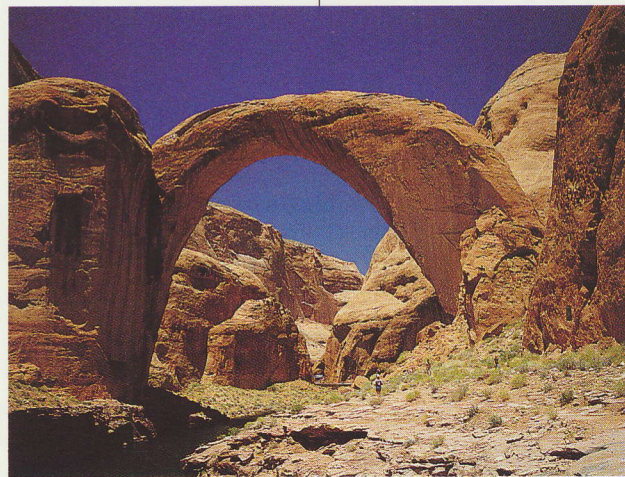
Whitewater Rafting

If you're looking for whitewater excitement, reserve your seat now for a rafting adventure through the Grand Canyon, operated by Wilderness River Adventures. You can embark on an exhilarating journey as short as 3½ days or as long as two weeks.

Due to the popularity of these trips, we suggest you make reservations as soon as possible. Many trips begin operating in May and most run through September.

For more information on whitewater trips for 1994, call 800-992-8022. Or write: Wilderness River Adventures, P.O. Box 717, Page, AZ 86040.

RAINBOW BRIDGE



Rainbow Bridge from the Navajo Mountain side, as Theodore Roosevelt and Zane Grey saw it in 1913.

A National Monument

Rainbow Bridge has fascinated America since it was "discovered" in 1909, featured by National Geographic magazine and declared a national monument in 1910.

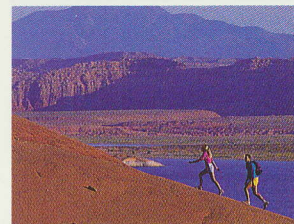
Theodore Roosevelt and Zane Grey, in separate horseback expeditions in 1913, skirted Navajo Mountain to see the world's tallest known bridge. Both were so impressed they were compelled to write about their experience.

By the 1950s, hospitality pioneer Art Greene was boating guests 63 miles upriver from Lees Ferry and hiking six miles to view Rainbow Bridge.

Even so, relatively few saw the bridge until Lake Powell began forming in 1963. Today, it remains the premier geological attraction in Glen Canyon National Recreation Area.

Nonnezoshi

With a span of 275 feet, Rainbow Bridge gracefully arches to a



Moderate slopes provide excellent vistas and opportunities for exercise.

height of 290 feet and a top width of up to 42 feet. A Navajo legend calls it Nonnezoshi, or "rainbow of stone." This soaring ribbon of sandstone is considered sacred by the Navajos. It nestles in a canyon carved by a stream en route to the Colorado River from the north flank of Navajo Mountain.

Hiking Opportunities

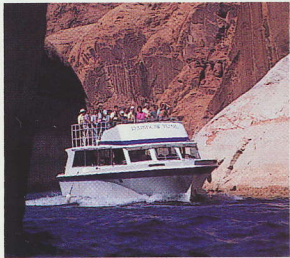
Lake Powell's 1,960 miles of shoreline are composed of side canyons, sandy beaches and moderately-sloped sandstones that form ideal hiking opportunities and vistas. There are no marked trails but back country opportunities abound because Lake Powell occupies only 13% of the huge Glen Canyon National Recreation Area.

EXPLORER PACKAGES

A Good Choice For Fun And Savings

Our Explorer Packages offer unique combinations of the different highlights here at Lake Powell. They're perfect for people on a budget of time and/or money.

- Four Explorer packages combine lodging or an RV space with boat tours.
- Two Explorer Packages combine lodging and boating.
- The Houseboat Explorer offers an extra houseboat day at no charge.
- Lake Powell packages offer 10% savings over seasonal prices.



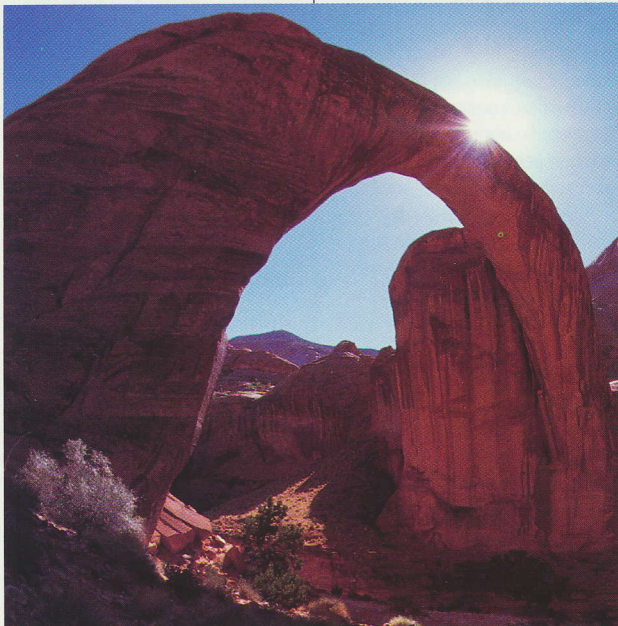
- All packages are year-round, unless noted.

Rainbow Explorer

All-Day: Rainbow Bridge National Monument — the world's tallest stone bridge — has been called one of the seven natural wonders of the world. Many don't consider a Lake Powell visit complete without seeing this spectacle (see page 16). Includes:

- 100-mile guided boat tour to Rainbow Bridge National Monument, including exploration of one or more major canyons. Approximately 7 hours from Wahweap, 7½ hours from Bullfrog.
- Lunch.
- 2 nights lodging at Wahweap Lodge or Bullfrog's Defiance House Lodge.
Departs 9:00 a.m. from Wahweap, 8:00 a.m. from Bullfrog.

One of Lake Powell's 96 major canyons (left). Rainbow Bridge National Monument (below).



Bullfrog departures in budget season with groups only.

Half-Day Includes:

- Guided tour to Rainbow Bridge. Approximately 5 hours.
- 2 nights lodging at Wahweap Lodge.

Departs from Wahweap only, 7:30 a.m. and 1:00 p.m. (from 11/1-3/31, at 11:00 a.m.).

RV Rainbow Explorer

All-Day Includes:

- 100-mile guided boat tour to Rainbow Bridge (see Rainbow Explorer).
- Lunch
- 2 nights RV space.

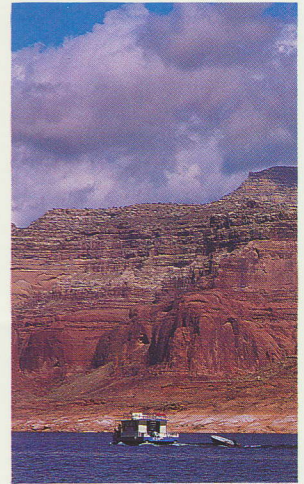
Departs 8:00 a.m. from Bullfrog, with pickup at Hall's Crossing by advance reservations, and 9:00 a.m. from Wahweap. Budget season tours from Bullfrog with groups only by advance reservations.

Half-Day Includes:

- Guided tour to Rainbow Bridge. Approximately 5 hours. Wahweap only.
- 2 nights hookup at Wahweap RV Park.

Senior Rainbow Explorer / Senior RV Rainbow Explorer

All-Day/Half-Day
These packages at Wahweap, Budget season, offer a 10% additional discount and choice of a full or half-day guided boat tour to Rainbow Bridge, plus two nights of lodging or RV space. Age 50 and older. Valid 11/1-3/31 at Wahweap only.



Heading toward adventure.

Colorado Combo Explorer

This trip is your opportunity to see Lake Powell *plus* the river that carved what John Wesley Powell called Glen Canyon. Includes:

- Half-day, 15-mile float trip to historic Lees Ferry.
- Stop on Colorado River to examine Anasazi petroglyphs.
- All-day guided boat tour to Rainbow Bridge.
- Lunch.
- 3 nights lodging at Wahweap Lodge.

Transportation to Page provided from Wahweap Lodge.

Float trips depart from Wilderness River Adventures, 50 South Lake Powell Blvd., Page, February 15 – November 15.

Houseboat/Lodging Explorer

Now you can afford to schedule that fishing trip or family getaway you've been talking about. Ideal for mini-vacations, long weekends and for those who want to "try out" Lake Powell houseboating. Valid 11/1-4/30. Includes:

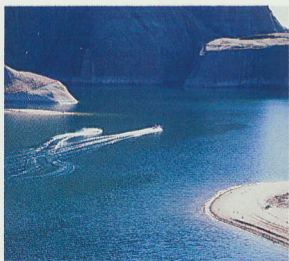
- 2 days of houseboating for the price of one.
- 1 night lodging at Wahweap or Bullfrog or 1 night housekeeping at Hall's Crossing or Hite.
– or –
2 nights RV space at Wahweap, Bullfrog or Hall's Crossing.

Small Boat/Lodging Explorer

Ideal for fishermen and families who want to explore or fish Lake Powell by day, yet enjoy the comforts of lodging and "catered" dining (at Wahweap and Bullfrog). Valid 11/1-4/30. Includes:

- 1 day of small boat rental (from marina opening to one hour before closing):
- 2 nights lodging at Wahweap or Bullfrog or 2 nights housekeeping at Hall's Crossing or Hite
– or –
2 nights RV space at Wahweap, Bullfrog or Hall's Crossing.

Whether by guided tour or rented boat, enjoy the fascinating sights and colors of Lake Powell by exploring its 96 major canyons and hundreds of coves.



Terms And Conditions

- Prices for all packages, except Houseboat and Small Boat Explorers, are per person in same room and include taxes. Lakeside rooms slightly higher.
- For Houseboat and Small Boat packages, maximum room occupancy is 4; per housekeeping unit, 6.
- Explorer adventures should be reserved in advance through our Central Reservations office.
- Full payment is required to reserve a package, transferable or refundable only if cancellation is received 24 hours in advance.
- Children's fare applies to those under 12 years. Age 2 and under – free.
- For dates of seasons, see 1994 rate brochure.

Standard Policies: We are authorized to serve the public by the National Park Service; the U.S. Coast Guard and Interstate Commerce Commission. We reserve the right to change equipment or cancel at any time for any reason (in our best judgment concerning weather, safety, etc.). If a trip is cancelled and alternative arrangements are not satisfactory, fares or deposits will be refunded. We also reserve the right to refuse use of equipment, facilities, etc., if the renter or customer in our judgment is ill or otherwise in a situation which might affect his own safety, or the safety of others. We also reserve the right to call in rented boats handled improperly or in an unsafe manner.

ADDITIONAL HIGHLIGHTS

More Lake Powell Services And Features

Beautiful Weather: Lake Powell averages 78% possible sunshine year-round.

Summer temperatures sometimes exceed 100 degrees, and winters are warmed by abundant Colorado plateau sunshine. Snow is rare. Spring and fall are delightful. Low humidity year-round increases the comfort factor.

Average Weather & Water Temperatures

	Jan.	Feb.	Mar.	Apr.	May	June
Maximum	45	53	61	72	82	90
Minimum	24	31	36	46	53	62
Water	47	46	52	54	64	70
	July	Aug.	Sept.	Oct.	Nov.	Dec.
Maximum	97	94	88	77	59	45
Minimum	71	69	60	46	36	25
Water	76	80	76	69	62	53

Off-season Specials: There are many reasons to visit Lake Powell at times other than the summer months: uncrowded conditions, moderate temperatures, great fishing, and lower boat rental and lodging rates.

Overland Tours: Available at Wahweap and Bullfrog with 5-passenger minimum and advanced reservations.

Well-Stocked Marina Stores: All marinas stock groceries, beer, ice, film, sundries, fishing licenses, tackle, bait, lures, boat supplies, etc.

Boat Docking and Storage: Short-term slip rentals, available at all road-accessible marinas, may be booked through Central Reservations when you make your vacation plans. (Maximum boat size: 10' x 30'). Contact the marina concerning long-term slip, buoy or dry storage needs.

Boat Service: Our authorized OMC, Mercury and Volvo mechanics can service most boats and motors. We also stock a large selection of parts.

Credit Cards: At Lake Powell, we honor all major credit cards.

Bullfrog/Hall's Crossing Ferry: Departs Hall's Crossing at 8:00 a.m. year-round, with 6 daily departures on consecutive even hours, 5/15-9/30, and 4 departures daily; 10/1-5/14. Returns from Bullfrog at 9:00 a.m. with 6 daily departures on consecutive uneven hours, 5/15-9/30, and 4 departures daily; 10/1-5/14. 20-minute crossing for passengers, vehicles and trailers.

Auto Services: Each resort/marina includes an auto service station. Hite, with limited services, is the only marina that does not offer diesel fuel. Page Airport offers auto rentals.

Private Aircraft Facilities: WAHWEAP (Page Airport): 5,000-foot surfaced, lighted runway with fueling facilities. Call Wahweap for transportation and reservation service. Rental cars available. BULLFROG: 3,500-foot surfaced runway with tie-downs. We'll meet your plane with advance notice via Unicom 122.8. HALL'S CROSSING: Transportation is provided by Cal Black Memorial Airport, a 10-mile trip.

Airline Service: Page, Arizona, is served daily by SkyWest Airlines (Delta Connection) from Phoenix, Salt Lake City and Las Vegas.

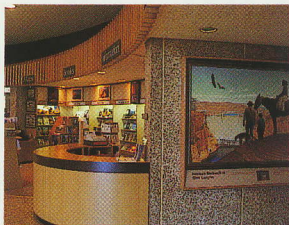
Travel Agent Policies: We pay 10% commission to authorized travel agents on all services. We suggest agents deduct this commission and remit net payment to Lake Powell Resorts & Marinas, Box 56909, Phoenix, AZ 85079.

Calendar of Events: There are special events taking place at Lake Powell every month. To make sure you don't miss your favorite, we'll be happy to send you a list of our upcoming attractions. Call or write today.

NATIONAL PARK SERVICE ACTIVITIES

The National Park Service (NPS) oversees Glen Canyon National Recreation Area (GCNRA), more than a million acres of incredibly diverse and beautiful land that is so rugged, it was the last in the United States to be mapped.

Lake Powell is often called the "jewel" of this vast panorama. It began to form in 1963 upon the closing of the gates at Glen Canyon Dam. When it first filled in 1980, Lake Powell had backed 186 river miles into 96 major canyons, forming 1,960 miles of shoreline. GCNRA exhibits and interpretive NPS personnel are found in two major locations.



Carl Hayden Visitor Center.

Carl Hayden Visitor Center

Two miles north of Page, AZ.

NPS exhibits here share the spotlight with the huge Glen Canyon Dam and its self-guided tours. The chief exhibit is a large-scale relief map of the entire area. Films shown daily. Children enjoy dinosaur footprints extracted from the canyon floor.

Hours:

Memorial Day thru Labor Day
7:00 a.m. – 7:00 p.m.

Winter Hours:

8:00 a.m. – 5:00 p.m.

Bullfrog Visitor Center

On Utah 276, adjacent to Bullfrog Resort & Marina.

Exhibits, developed around a geologic theme, include a recreation of a dramatic slot canyon unique to the Colorado Plateau and a display depicting the evolution of Glen Canyon plant and animal life from the Ice Age. Photography of the scenic beauty of Glen Canyon is also exhibited.

Hours:

Memorial Day thru Labor Day
7:00 a.m. – 7:00 p.m.*

Winter Hours:

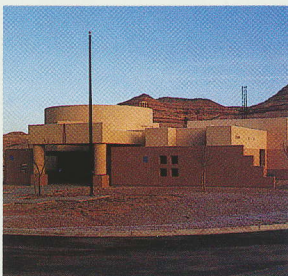
8:00 a.m. – 5:00 p.m.*
*funds permitting

Park Service Evening Programs

Available every summer at Wahweap and Bullfrog. Check at the Visitor Center or lodge desks for schedules.

Other Park Service Offices

Smaller NPS offices at Lees Ferry, Arizona, and uplake at Dangling Rope, Bullfrog, Hall's Crossing and Hite marinas in Utah are open on a limited basis during the summer.



Bullfrog Visitor Center.

LEARN MORE

Read The Book, See The Movie

It's easy to relax and enjoy your Lake Powell visit when you're fully informed about all there is to see and do. We feature a wide variety of informative and entertaining materials to enhance your experience. Most are available in our retail stores or you may order by phone with your credit card. See below for details.

Publications:

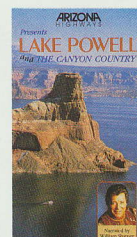
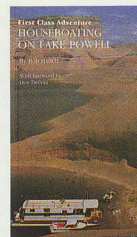
1. *Houseboating On Lake Powell* (by Bob Hirsch, 94 pp., \$6.95)
2. *Planning and Enjoying a Lake Powell Houseboat Vacation* (24 pp., \$1.00)
3. *Stan Jones Boating & Exploring Map* (\$4.00)
4. *Exploring the Southwest's Grand Circle* (48 pp., \$7.45)
5. *Glen Canyon-Lake Powell* (52pp; \$6.95)
6. *Powell Voyage of Discovery* (68pp; \$6.95)
7. *Lake Powell Boater's Guide* (180 pp., \$12.95)

Videos:

8. *Arizona Highways Presents Lake Powell and The Canyon Country* (60 min., \$29.95)
9. *Lake Powell Houseboating* (31 min., \$19.95)
10. *ABC's of Houseboating on Lake Powell* (12 min., \$4.50)

2 Easy Ways To Order:

- Phone in your credit card order: 1-800-528-6154 (278-8888 in Greater Phoenix)
- Mail your order to Lake Powell Resorts & Marinas, Box 56909, Phoenix, AZ 85079, with personal check, bank draft or money order. Please do not send cash.



Tax: Arizona residents must add 6.5% sales tax.

Postage And Handling: \$1.50 for one item; \$2.50 for two or more items.

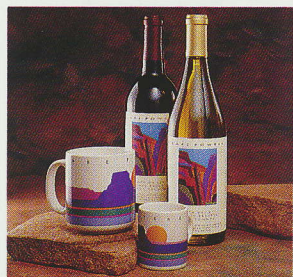
Timing: All phone and mail orders handled within 24 hours. Please allow 2-5 days for U.S. mail delivery.

RETAIL STORES

Supplies And Souvenirs

Not only do our marina stores stock groceries, beer, ice, film, sundries, fishing licenses, tackle, bait, lures, and boat supplies, you'll also find ample opportunity to purchase mementos of your exciting stay...T-shirts and sweat-shirts, caps, can coolers, hip packs, books, videos, and more.

Stylish resort and active wear from Wilderness River stores in Page (below) is also available at Lake Powell Marina outlets.



A great selection of fine wines at Southwest Gifts, Wahweap.

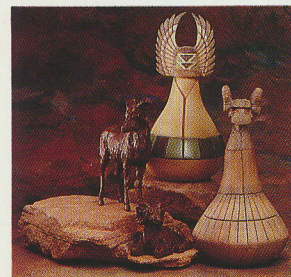
Gift Shops And Specialty Stores:

In addition to Wahweap and Bullfrog gift shops, Wilderness River Adventures operates two retail outlets in Page, AZ, featuring a wide selection of specialty clothing and outfitter items and gifts.

Look For The Lizard: Where we can, we stock such environmentally beneficial products in our marina stores as soaps, cleaning and paper products. Look for shelf markers displaying "the sign of the lizard." We have eliminated all glass soda and beer containers: we provide biodegradable liquid soap on all houseboats and use "friendly" cleaning agents in all our shops.

Native American Wares: Our proximity to and association with Navajo, Hopi and Zuni craftspeople means we can offer a selection of pottery, Kachina dolls and jewelry in Wahweap and Bullfrog gift shops and Hall's Crossing store. If you wish, we can secure handcrafted specialty items.

A variety of handmade and Native American handcrafted items.



Navajo Eagle Dancer Kachina.

RESERVATIONS

It's Easy To Plan Your Adventure

Our reservation office is open Monday through Friday, 7:30 a.m. to 4:30 p.m., Mountain Standard Time. Offices closed holidays. If lines are busy, we suggest trying later in the day.

Call toll-free: 800-528-6154 (278-8888 in Greater Phoenix); Fax: (602) 331-5258; or write: P.O. Box 56909, Phoenix, AZ 85079.

Other Key Addresses And Phone Numbers:

Wahweap Lodge & Marina
Box 1597, Page, AZ 86040
(602) 645-2433

Lake Powell Motel
c/o Wahweap Lodge & Marina
(602) 645-2477

Bullfrog Resort & Marina
Box 4055, Lake Powell, UT 84533
(801) 684-2233

Hall's Crossing Marina
Box 5101, Lake Powell, UT 84533
(801) 684-2261

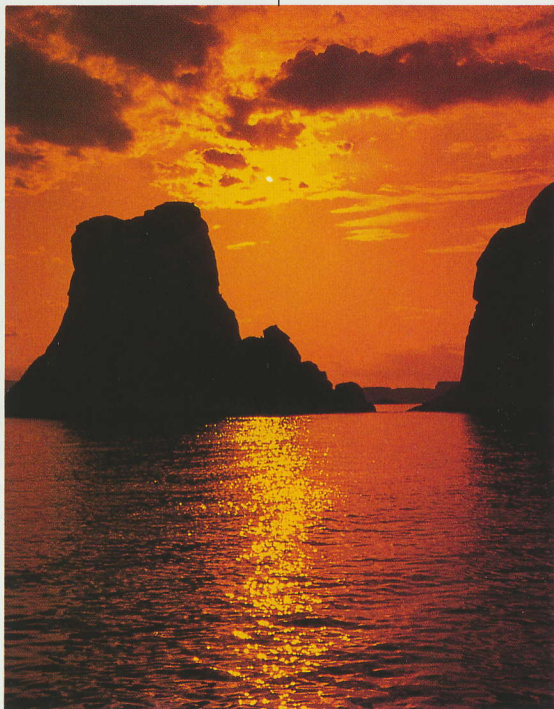
Hite Marina
Box 501, Lake Powell, UT 84533
(801) 684-2278

Wilderness River Adventures
Box 717, Page, AZ 86040
(602) 645-3279

Group Reservations: For groups of 20 or more adults, please call our Group Reservations at 800-341-8934 (In Greater Phoenix, call 331-5223). Fax: 602-331-5258.

SPECIAL NOTES -

1. Rates include set-aside funding for future capital improvements at Lake Powell as directed by the National Park Service.
2. Prices, equipment and/or conditions in this brochure and in a separate rate brochure are subject to change without notice.
3. For additional Lake Powell information, write to: National Park Service, Glen Canyon National Recreation Area, P.O. Box 1507, Page, AZ 86040.



1993 marked the beginning of the fourth decade for Lake Powell — a place like no other on Earth. To continue to enjoy this magical blend of scenery, climate and clean water, a commitment is necessary by all of us:

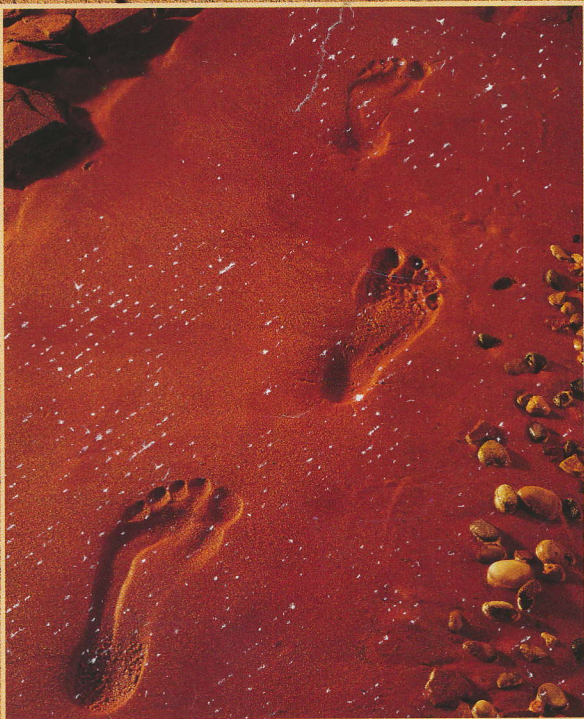
Everything brought onto Lake Powell must be brought out. No trash or debris is to be thrown into the lake or buried anywhere in Glen Canyon National Recreation Area.

Remember, take only pictures, leave only footprints.

Thank you!



ARA's family of companies provides lodging, recreation, and/or dining in such national park facilities as Mesa Verde, Shenandoah, Denali, Olympic, and Ellis Island.



*Take only pictures,
leave only footprints.*

800-528-6154

In Greater Phoenix, call 278-8888 • **Hours:** 7:30 a.m. to
4:30 p.m., Mountain Standard Time • **Fax:** 602-331-5258
Lake Powell Resorts and Marinas, Box 56909, Phoenix, AZ, 85079



Lake Powell Resorts & Marinas is operated by ARA Leisure Services,
a concessioner of the National Park Service, Glen Canyon National Recreation Area.