

**GREAT BASIN NATIONAL PARK
GENERAL MANAGEMENT PLAN**

alternatives workbook response

U.S. Department of the Interior / National Park Service



SUMMARY OF RESPONSES TO THE ALTERNATIVES WORKBOOK

INTRODUCTION

In January 1987 the National Park Service began a process for developing a general management plan for Great Basin National Park in Nevada. When completed, this general management plan will provide a basic management philosophy for resource protection and public use and enjoyment of the park, and it will guide park managers in addressing issues and achieving management objectives for a 5- to 10-year period.

To initiate the planning process, the Park Service held a series of public meetings and workshops during the summer of 1987 to gather information about the public's needs, interests, and expectations for the future of Great Basin National Park. Meetings were held in Baker, Ely, Reno, and Las Vegas, Nevada and in Salt Lake City, Utah. The issues, problems, and concerns expressed by the public in those meetings were recorded and distributed in a feedback document, which was sent to all people on the Great Basin National Park mailing list.

In October 1988 the Alternatives Workbook was distributed to the public, asking for opinions on alternatives being considered for incorporation into the proposed general management plan. Approximately 1,500 copies of the workbook were mailed, and 608 responses were received. Initially all responses were due on November 15, 1988; however, because of the interest expressed, the review period was extended to December 2, 1988. All responses were subsequently read and analyzed by the Great Basin planning team.

This Summary of Responses to the Alternatives Workbook contains two types of response information. The first is a tabulation of responses to questions concerning potential Recreational Opportunity Spectrum (ROS) classes, visitor uses, developments, and resource management practices in the park. Respondents were asked to check only one box (alternative) per question, and their selections have been tallied and presented in the following section.

The second half of the summary is a representative sample of the comments recorded on the "Additional Issues and Concerns" page of the workbook. People were encouraged to use this blank page to write any additional comments, and following review of all of the written comments, approximately 50 percent were randomly selected for presentation in this summary.

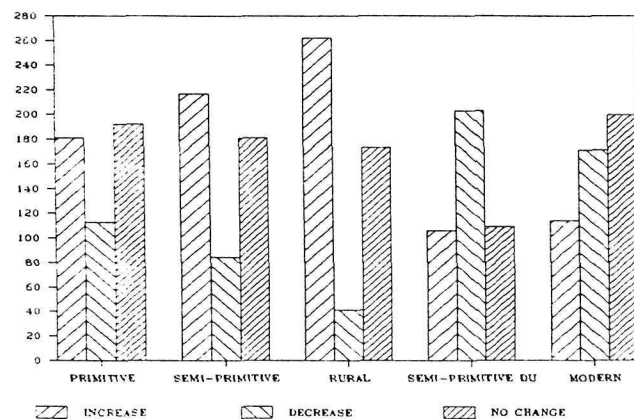


ALTERNATIVES WORKBOOK RESPONSES

RECREATION OPPORTUNITY SPECTRUM CLASSES

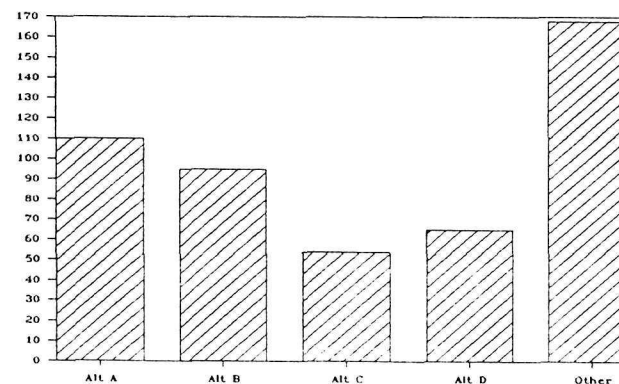
As described in the "Background and Alternatives" portion of the workbook, the recreation opportunity spectrum (ROS) provides a zoning scheme that establishes what activities can and cannot occur in specific park areas. The following represents a tabulation of the responses from the public when asked how they would like to see the existing conditions changed in Great Basin National Park.

ROS Class - Existing Conditions	Increase	Decrease	No Change	Total Responses
Primitive	<u>181</u>	<u>113</u>	<u>192</u>	<u>486</u>
Semi-primitive	<u>217</u>	<u>84</u>	<u>181</u>	<u>482</u>
Rural	<u>262</u>	<u>41</u>	<u>173</u>	<u>476</u>
Semi-primitive day use	<u>106</u>	<u>203</u>	<u>109</u>	<u>418</u>
Modern	<u>114</u>	<u>171</u>	<u>200</u>	<u>485</u>



The numbers and graphs below summarize the responses from the public when asked which of the alternative zoning schemes they preferred. In addition to these responses, there were many comments suggesting how zoning might be improved or how elements of the alternative zoning schemes could be combined into a different alternative.

Preference	Total Responses
Alternative A zoning classes	<u>110</u>
Alternative B zoning classes	<u>95</u>
Alternative C zoning classes	<u>54</u>
Alternative D zoning classes	<u>65</u>
Other	<u>168</u>

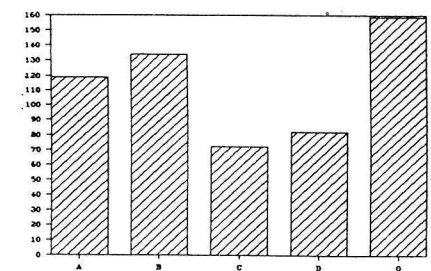
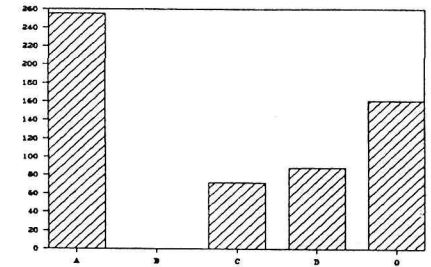


VISITOR USE AND RESOURCE MANAGEMENT

All the responses to specific questions in the Alternatives Workbook are tabulated below. Where more than 12 percent of the respondents indicated "other," an analysis of the written comments is included. Where similar responses are included for each question, the graphs lump the responses into one choice (i.e. where Alternative A provided a choice and Alternative B states "same as Alternative A," all responses for both Alternative A and B are represented on the graph as Alternative A)

USE AND DEVELOPMENT

Issue	Alternative A	Alternative B	Alternative C	Alternative D	Other
1. Should a new Great Basin interpretive center be built, and if so, where should it be located? Total number of responses = 576	Construct a new great Basin interpretive center at Baker Ridge. 191	Same as alternative A 64	Construct a new Great Basin interpretive center at Kious Basin 72	Construct a new Great Basin regional inter-agency interpretive center at Kious Basin 88	* the majority responding in this category felt that no new visitor center needed to be constructed 161
2. Where should the new entrance road be located? Total number of responses = 566	Obtain a right-of-way and construct a new entrance road from Nevada 487 to the new interpretive center, as depicted on the Alternative A map (would not cross private land) 119	Obtain a right-of-way and construct an entrance road from Nevada 488 to the new interpretive center, as depicted on the Alternative B map (would not cross private land) 134	Obtain a right-of-way and construct a new entrance road from Nevada 487 to the new interpretive center, with a continuing link to the Lehman Caves visitor center, as depicted on the Alternative C map (would not cross private land) 72	Obtain a right-of-way and construct a new entrance road from Nevada 487 to the new interagency interpretive center, as depicted on the Alternative D map (would not cross private land) 82	* the majority responding in this category felt that no new entrance road needed to be built 159



Issue

3. What type of access should be provided from the Lehman Caves developed area to the Wheeler Peak campground/day use area?

Alternative A

Remove the picnic area at Lehman Caves and replace with a 100-car parking lot; establish seasonal shuttle service to the Wheeler Peak day use area; develop a turnaround and 15-car parking lot at the end of the Wheeler Peak road for off-season use; during the peak season allow only motorists with camping permits to the Lehman campgrounds on the 12-mile road and do not allow them to drive beyond the campgrounds

Alternative B

Replace the Lehman Caves picnic area with a 100-car parking lot; provide vehicle access from the new parking lot to the Wheeler Peak campground and trailhead; develop a new 25-car parking lot at the end of the Wheeler Peak road

Alternative C

Same as alternative B, except develop a new 50-car parking lot at the end of the Wheeler Peak road

Alternative D

Same as alternative A, except allow motorists with camping permits to drive to the Wheeler Peak campground

Other * *the majority of those responding in this category suggested leaving the road as is; many did not want to see the picnic area at Lehman Caves replaced with a parking lot; some noted that a shuttle was not necessary on the Wheeler Peak Road at the present time*

Total number of responses = 587

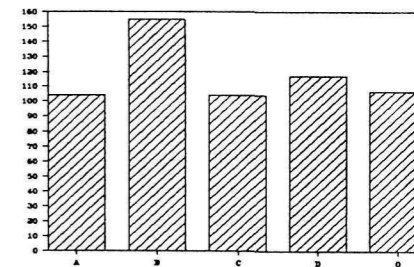
104

155

104

117

107



Issue

Alternative A

Alternative B

Alternative C

Alternative D

4. Should the Lehman Caves visitor center be retained, and if so, how would it be used?

Remove the Lehman Caves visitor center and existing parking area; reopen the historic cave entrance, and construct a new all-weather shelter near the entrance to protect cave visitors from inclement weather; move cave interpretation, concessions, and ticket sales to a new staging facility adjacent to the proposed Lehman Caves parking lot; develop a new trail from the parking lot to the cave entrance, and provide a shuttle for handicapped visitors; move administration to a new facility outside the park boundary along the proposed entrance road

Leave the cave interpretation, concession, and ticket sales functions in the existing visitor center and expand interpretation into the present offices; remove the lower level of the existing visitor center parking lot; retain the upper level to provide handicap and emergency parking; develop a new trail from the proposed parking lot to the existing Lehman Caves visitor center, with a shuttle for the handicapped; move administration to the town of Baker

Same as alternative B, except move administration to the proposed Great Basin interpretive center at Kiou Basin

Leave the cave interpretation function in the existing Lehman Caves visitor and expand it into the present concession area and offices; move concession, interpretive staff offices, and cave ticket sales to a new staging facility adjacent to the proposed Lehman Caves parking lot, remove the lower level of the existing visitor center parking lot; retain the upper level to provide handicap and emergency parking; develop a new trail from the proposed parking lot to the visitor center, with a shuttle for the handicapped; move administration to the proposed regional inter-agency interpretive center at Kiou Basin

Other ^{*}most of those responding in this category suggested leaving the cave visitor center as it currently exists; many were concerned about having parking further away from the caves; some commented that the visitor center should only be used for interpretation

Total number of responses = 575

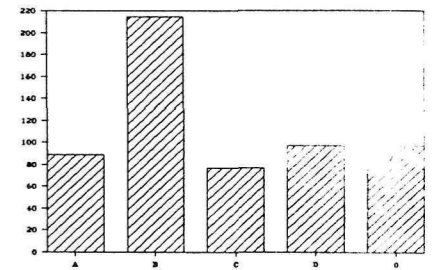
89

215

77

97

97



5. Should the historic orchard in the Lehman Caves developed area be reestablished?

Reestablish the historic lehman orchard (expand the current orchard from 8 trees to approximately 30 trees) to re-create the historic scene; use drip irrigation to conserve water

Retain the orchard as is

Same as alternative B

Same as alternative A, except reestablish the historic ditch to irrigate the orchard

Other

Total number of responses = 596

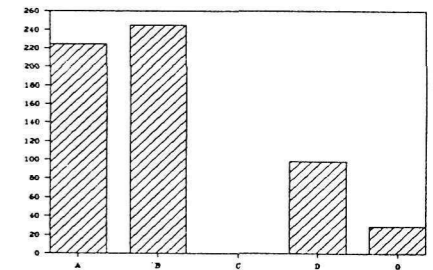
224

224

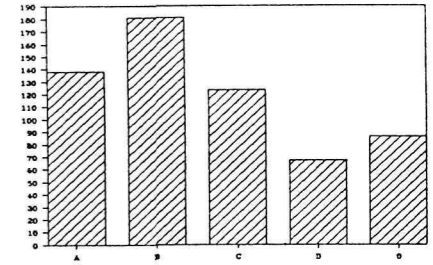
21

98

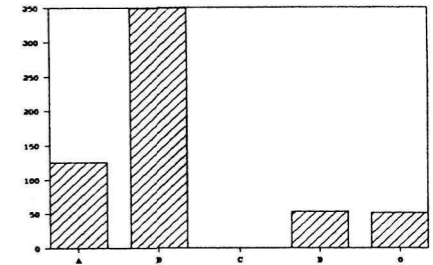
29



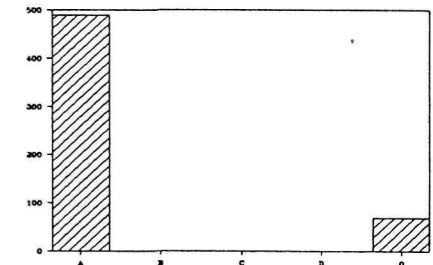
Issue	Alternative A	Alternative B	Alternative C	Alternative D	
6. Where should NPS developments (housing, maintenance, administration) be located?	Remove all housing, maintenance, and administration from the park and locate on a spur road adjacent to the proposed park entrance road	Remove all housing, maintenance, and administration from the park and locate within the town of Baker	Retain the existing housing area but do not expand; use an area below Baker Ridge as a site for additional housing; relocate maintenance to the gravel pit site; relocate administration to the new Great Basin interpretive center at Kious Basin	Same as alternative C, except expand the existing housing area to include additional housing	Other [*] <i>the majority responding in this category offered some other combination of locations for these facilities; some suggested that the NPS should only use those facilities that presently exist</i>
Total number of responses = 595	138	181	123	67	86



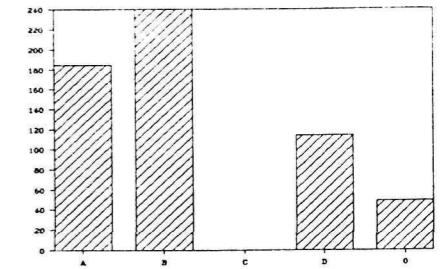
7. Where should the concession operation be located?	Move the concession operation to the new Lehman Caves staging facility adjacent to the proposed Lehman Caves parking lot	Leave the concession operation in the existing Lehman Caves visitor center	Same as alternative B	Move the concession operation to the new Lehman Caves staging facility	Other
Total number of responses = 578	125	311	38	53	51



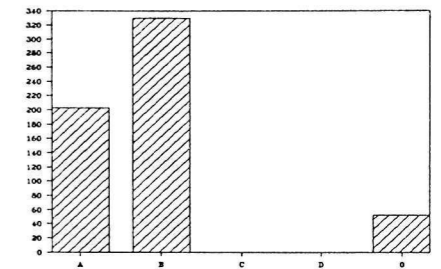
8. What type of access should be provided to Strawberry Creek?	Obtain rights-of-way and provide two-wheel-drive access (unsurfaced) for high-and low-clearance vehicles	Same as alternative A	Same as alternative A	Same as alternative A	Other
Total number of responses = 577	395	52	35	26	69



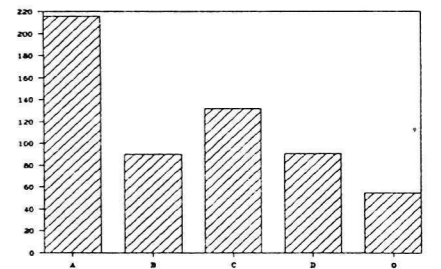
Issue	Alternative A	Alternative B	Alternative C	Alternative D	Other
9. What type of access should be provided to Snake Creek?	Obtain rights-of-way and provide two-wheel-drive access along a 3-mile dirt road to the Snake Creek trailhead	Obtain rights-of-way and provide two-wheel-drive access along a 6-mile dirt road to the Shoshone trailhead	Same as alternative B	Obtain rights-of-way and provide two-wheel-drive access along a 6-mile surfaced road to the Shoshone trailhead	
Total number of responses = 587	184	194	46	114	49



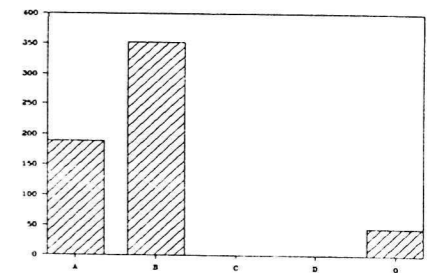
10. What type of access should be provided to Big Wash?	Obtain rights-of-way and provide four-wheel-drive access to the Big Wash trailhead	Obtain rights-of-way and provide two-wheel-drive access to the Big Wash trailhead	Same as alternative B	Same as alternative A	Other
Total number of responses = 586	185	289	41	18	53



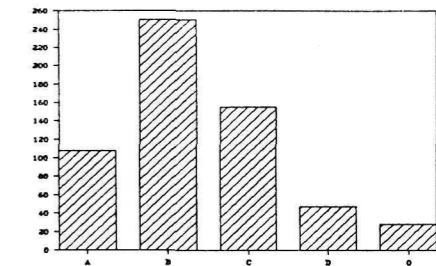
11. What type of access should be provided to Lexington Arch?	Obtain rights-of-way and provide two-wheel-drive access (unsurfaced) for high and low-clearance vehicles to the Lexington Arch day use area; establish a trailhead and parking	Obtain rights-of-way and provide two-wheel-drive access (unsurfaced) for high-clearance vehicles only to a new trailhead and parking area at Lexington Arch	Obtain rights-of-way and provide two-wheel-drive access (unsurfaced) for high and low clearance vehicles to both the Lexington Arch trailhead and the North Fork of Lexington Creek trailhead	Obtain rights-of-way and provide two-wheel-drive access (unsurfaced) for low and high-clearance vehicles to the Lexington Arch trailhead and allow four-wheel-drive access to the North Fork of Lexington Creek trailhead	Other
Total number of responses = 584	216	90	132	91	55



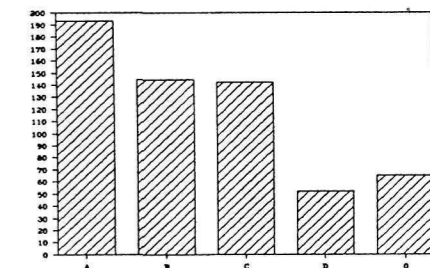
12. What type of access should be provided to Big Spring Wash?	Obtain rights-of-way and provide four wheel drive access to the Big Spring Wash trailhead	No maintained access provided by NPS	Same as alternative B	Same as alternative B	Other
Total number of responses = 587	189	299	31	23	45



Issue	Alternative A	Alternative B	Alternative C	Alternative D	Other
13. What type of access should be provided to Decathon Canyon?	Obtain rights-of-way and provide four-wheel-drive access to the Decathon Canyon south trailhead	No maintained access provided by NPS	Obtain rights-of-way and provide two-wheel-drive access to the Decathon Canyon north trailhead	Obtain rights-of-way and provide four-wheel-drive access to the Decathon Canyon north trailhead	
Total number of responses = 588	108	250	155	47	28

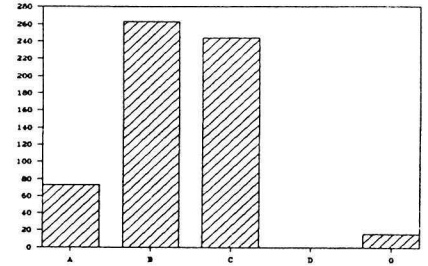


Issue	Alternative A	Alternative B	Alternative C	Alternative D	Other
14. What type of access should be provided to Mt. Washington?	Do not develop public access, but allow access by cross-country hikers from the east side of the park only	Provide for public access from the east side by trail but not from the west side	Obtain rights-of-way and up-grade the Mt. Washington road to the base of the summit (unsurfaced) to provide safe four-wheel-drive access for the public; construct a small ranger contact station and parking area at the base of the summit and a seasonal ranger residence inside the park boundary on the west side above the existing Pole Canyon mine site	Obtain rights-of-way and build a new Mt. Washington road from Lincoln Canyon to the base of the summit (unsurfaced) to provide access for concession-operated vehicles only; establish a small parking area and turnaround for concession vehicles at the base of the summit and an interpretive center with concession ticket sales, NPS offices, a small maintenance shop, and seasonal housing at the base of the mountain in Lincoln Canyon; construct a seasonal ranger residence inside the park boundary on the west side above the existing Pole Canyon mine site	
Total number of responses = 596	193	144	142	52	65

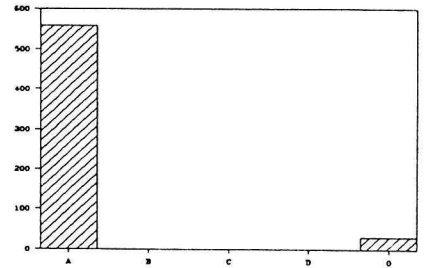


How many and what size campgrounds should be provided?

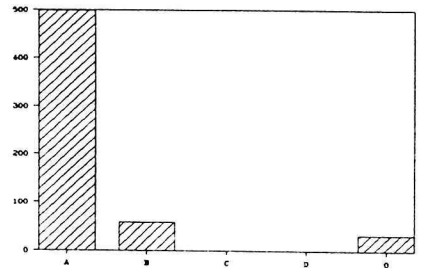
Issue	Alternative A	Alternative B	Alternative C	Alternative D	Other
15. Wheeler Peak - 37 existing designated sites (limited service)	Convert to a picnic area; no campsites	Convert to limited-service vehicle/tent camping only (no trailers or large RVs); 37 sites	Retain as is; limited service; 37 sites	Same as alternative B	Other
Total number of responses = 596	73	248	244	15	16



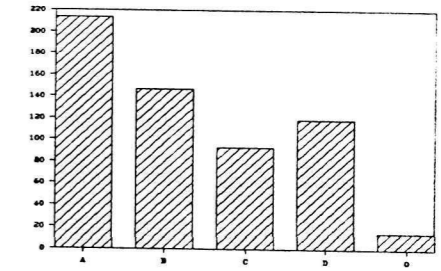
16. Upper Lehman - 24 existing designated sites (limited service)	Retain as is; limited service; 24 sites	Same as alternative A	Same as alternative A	Same as alternative A	Other
Total number of responses = 590	444	44	47	24	31



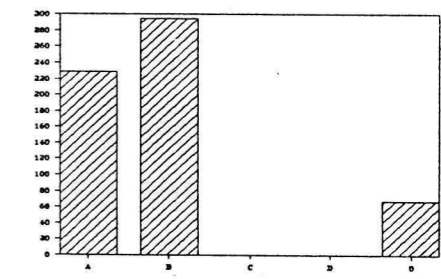
17. Lower Lehman - 11 existing designated sites (limited service)	Retain as is limited service; 11 sites	Eliminate campground; no sites	Same as alternative A	Same as alternative A	Other
Total number of responses = 590	426	58	47	26	33



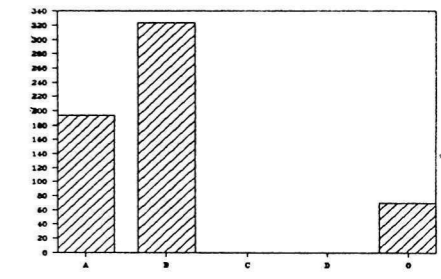
Issue	Alternative A	Alternative B	Alternative C	Alternative D	Other
18. Lehman Flats - no existing campsites	Leave as is; no sites	Develop a new limited-service campground; 25 sites	Develop a new full-service campground; 25 sites	Develop a new full-service campground; 50 sites	
Total number of responses = 588	214	147	93	119	15



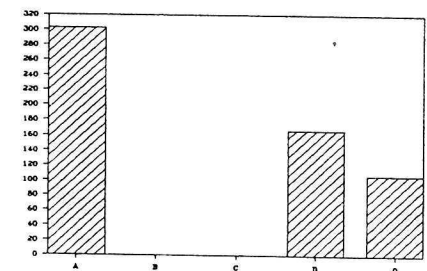
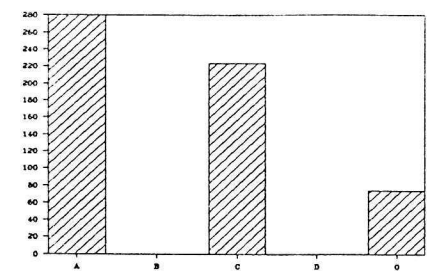
19. Baker Creek - 32 existing designated campsites (limited service)	Retain as is; add a corral; 32 sites	Add 10 additional campsites and a corral; limited service; 42 sites	same as alternative B	Same as alternative B	Other
Total number of responses = 591	229	251	26	18	67



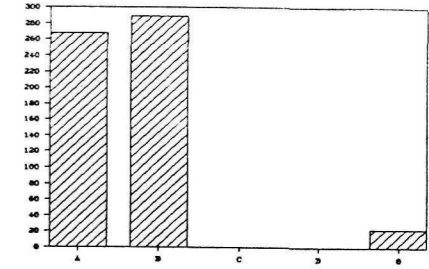
20. Grey Cliffs - 46 existing overflow sites	Eliminate campground; no sites	Upgrade to limited service; 46 sites	Same as alternative A	Same as alternative A	Other
Total number of responses = 588	160	324	17	17	70



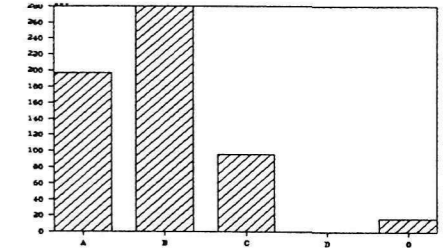
Issue	Alternative A	Alternative B	Alternative C	Alternative D	
21. Strawberry Creek - 5 existing undesignated sites	Develop a rustic group campground with a corral at the end of the road/trailhead; develop 5 rustic sites along the creek, 1 group site; 6 sites total	Same as alternative A	Develop a rustic campground (10 sites) with a corral at the end of the road/trailhead; develop 1 rustic group campsite; designate 5 rustic sites along the creek; 16 sites total	Same as alternative C	Other [*] <i>most responding in this category felt that there should be no additional development in the drainage; many felt there should be no corral</i>
Total number of responses = 577	252	28	204	19	74
22. Snake Creek - 10 existing undesignated sites	Eliminate camping; no sites	Develop a rustic group campground (6 sites) with a corral at Shoshone; designate rustic sites along upper Snake Creek; 10 sites total	Develop a rustic campground (10 sites) with a corral at Shoshone; designate 10 rustic campsites along the creek; 20 sites total	Develop a limited-service campground (20 sites) with a corral at Shoshone; develop a limited-service campground (10 sites) near Bonita Mine; develop and designate 10 limited-service campsites (rotation use) along lower Snake Creek; 40 sites total	Other
Total number of responses = 583	133	162	121	101	66
23. Big Wash - no existing campsites	Develop a rustic hiking/horse camp with a corral; 2 sites	Same as alternative A	Same as alternative A	Develop a rustic campground with a corral; 10 sites	Other [*] <i>most responding in this category felt that there should be no additional development in Big Wash; many felt there should be no corral</i>
Total number of responses = 577	239	35	29	167	107



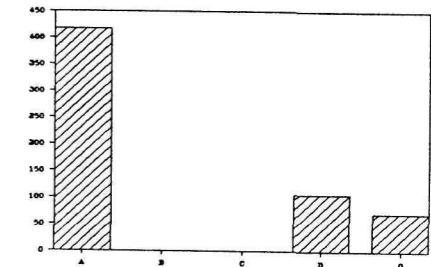
Issue	Alternative A	Alternative B	Alternative C	Alternative D	Other
24. Big Spring Wash - no existing campsites	Provide trail-head/parking only; no campsites	Leave as is; no development	Same as alternative B	Same as alternative A	
Total number of responses = 582	249	258	31	19	25



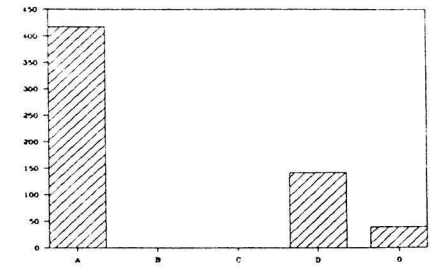
25. Decathon Canyon - no existing campsites	Develop rustic campsites/ trailhead parking; 6 sites	Leave as is; no development	Provide trailhead / parking only; no campsites	Same as alternative A	Other
Total number of responses = 588	171	280	95	26	16



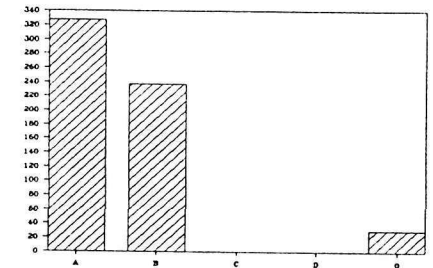
26. Should hang gliding be allowed, and if so, where?	No hang gliding	Same as alternative A	Same as alternative A	Provide hang-gliding launch sites at Mt. Washington and Kious Basin	Other <i>* most of those responding in this category felt that launching sites should not be on Mt. Washington; some felt that hang gliding should be allowed anywhere in the park; some felt the NPS should allow it, but not develop launching sites</i>
Total number of responses = 594	363	28	26	106	71



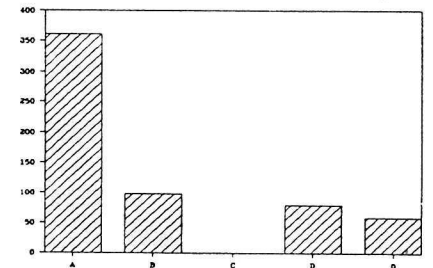
Issue	Alternative A	Alternative B	Alternative C	Alternative D	Other
27. Should snowmobiling be allowed, and if so, where?	No snowmobiling	Same as alternative A	Same as alternative A	Permit snowmobiling along the Snake Creek and Baker Creek roads	
Total number of responses = 598	363	27	28	141	39



28. Should cross-country skiing trails be maintained in the park?	Provide maintained cross-country skiing routes along the Baker Creek and Snake Creek roads	No maintained cross-country skiing trails	Same as alternative B	Same as alternative B	Other
Total number of responses = 594	327	206	17	14	30

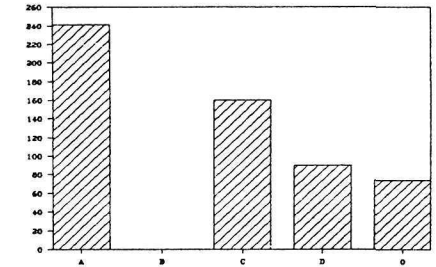


29. Should dogs be allowed away from developed areas, and if so, where?	Allow dogs in developed areas only	Allow dogs along trails and in developed areas in the modern and rural zones	Same as alternative B	Allow dogs along trails and in developed areas in modern, rural, and semi-primitive zones	Other
Total number of responses = 596	361	89	9	79	58

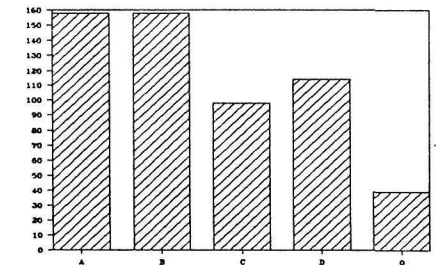


Resource Management

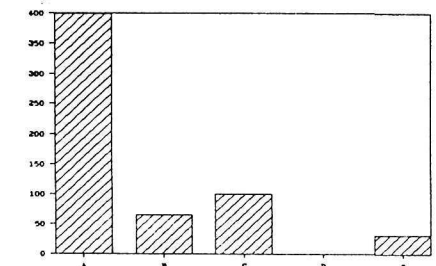
Issue	Alternative A	Alternative B	Alternative C	Alternative D	Other
30. Where should Bonneville cutthroat trout be reintroduced, and what fishing regulations should be established?	Reintroduce Bonneville cutthroat into all major streams; allow catch-and-release fishing only in streams where they are introduced	Same as alternative A	Reintroduce Bonneville cutthroat into Strawberry, Snake, and the South fork of Big Wash creeks; allow only catch-and-release fishing in those streams; in other streams establish standard Nevada creel limits	Reintroduce Bonneville cutthroat into the South Fork of Big Wash Creek; allow only catch-and-release fishing there; in all other streams establish standard Nevada creel limits	<i>*the majority responding in this category felt that fishing should be governed only by the State of Nevada's fishing regulations; many suggested only reintroducing the trout into the most suitable streams; some suggested that the NPS should not reintroduce the Bonneville trout in any streams</i>
Total number of responses = 565	209	32	160	90	74



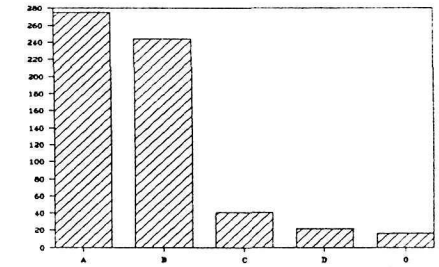
31. Should fish stocking by the state of Nevada for consumptive angling (put-and-take fishery) be permitted, and if so, where?	Do not allow any stocking of nonnative fish species in any of the streams in the park; reestablish subalpine lakes as fish-free aquatic habitats	Do not allow any stocking of nonnative fish species in any of the streams in the park; do not allow any additional fish stocking in subalpine lakes, but leave any fish that may be present	Allow stocking of nonnative fish species in Baker and Lehman creeks; do not allow any additional fish stocking in subalpine lakes, but leave any fish that may be present	Allow stocking of nonnative fish species in all streams except the South Fork of Big Wash Creek; allow fish stocking in Johnson Lake only; leave any fish that may be present in other subalpine lakes	Other
Total number of responses = 567	158	158	98	114	39



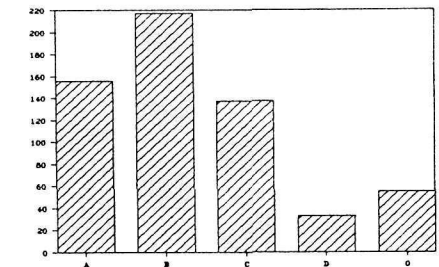
32. What measures should be taken for the protection of bighorn sheep?	Maintain as much separation as possible between bighorn sheep and domestic livestock; work with the state to prevent hunting of the herd outside park boundaries as long as the population remains low	Maintain as much separation as possible between bighorn sheep and domestic livestock	Monitor the bighorn herd, but do not manage grazing just to protect the sheep	Same as alternative C	Other
Total number of responses = 595	399	65	94	6	31



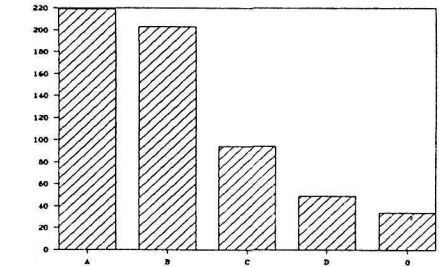
Issue	Alternative A	Alternative B	Alternative C	Alternative D	Other
33. Should elk be re-introduced into the park?	Encourage the reintroduction of elk	Allow the reintroduction of elk if they move into the park on their own	Try to prevent the reintroduction of elk by working with the state; if elk move into the park on their own, allow them to re-establish a viable herd	Eliminate any elk that enter the park because of potential conflicts with stock grazing	
Total number of responses = 599	275	244	41	22	17



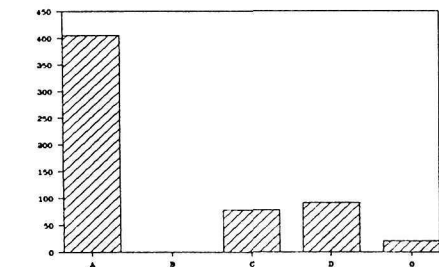
34. Should deer populations be controlled, and if so, how?	Do not attempt to modify populations of mule deer; allow populations to fluctuate in response to habitat changes and other environmental factors	Protect predator populations to control the deer numbers without hunting	Work with the state to manage herd size, with special hunts outside the park boundary	reduce deer numbers when any range deterioration is noted	Other
Total number of responses = 598	156	217	137	33	55



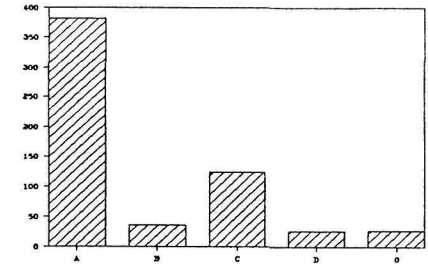
35. Should native predators be controlled, and if so, how?	Actively seek protection of all native predators regardless of conflicts with grazing stock	Allow predator populations to fluctuate freely in response to changing prey populations	Actively participate with adjacent land managers to control known problem predators outside park boundaries	Control predator populations within the park to protect grazing livestock	Other
Total number of responses = 599	219	203	94	49	34



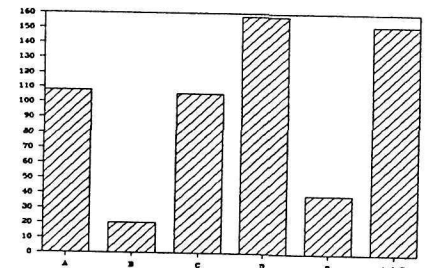
36. What measures should be taken to protect bald eagles and peregrine falcons	Work actively to reestablish these species	Same as alternative A	Prevent any disruption to potential habitat for these species, but do not try to reestablish them	Let the state of Nevada Fish and U. S. Fish & Wildlife Service develop any reintroduction plan and define critical habitats	Other
Total number of responses = 596	375	30	78	92	21



Issue	Alternative A	Alternative B	Alternative C	Alternative D	Other
37. What measures should be taken to protect federal or state threatened and endangered subalpine plant species?	Prohibit grazing in those areas where threatened and endangered species are known to exist	Fence or otherwise protect known populations of threatened and endangered species	Monitor threatened and endangered species, but continue to allow grazing in those areas where they exist unless a clear problem arises	Do not restrict grazing to protect threatened and endangered species under any circumstances	
Total number of responses = 598	382	36	124	26	27



38. What boundary adjustments are necessary to improve management of the park?	Transfer two sections (approximately 1,280 acres) of Forest Service land immediately adjacent and east of Baker Creek to the Park Service to protect the view from the proposed Great Basin interpretive center at Baker Ridge	Same as alternative A	No boundary additions proposed	Transfer approximately 1,600 acres of Forest Service land along the west side of Mt. Washington to the Park Service to provide additional protection for Mt. Washington and associated sensitive resources.	Other
Total number of responses = 583	108*	20	106	158*	39



*Number selecting both A & D = 152

ADDITIONAL ISSUES AND CONCERNS

Of all issues addressed by the public, the issue receiving the most comments was domestic livestock grazing in the park. Of those comments, 105 comments supported eliminating grazing from the park either immediately or over time; 30 comments supported placing more restrictions on cattle grazing to protect resources or scenic values; 5 comments suggested the NPS compensate cattle owners for losses to predators; and 3 comments supported the continued grazing within Great Basin National Park.

The following represents a 50 percent random sample of all of the public comments recorded in the "Additional Issues and Concerns" section of the Alternatives Workbook.

- | | | |
|--|--|---|
| <ul style="list-style-type: none">* Desire a quality park experience in all five ROS classes* Provide an experience maybe limited in scope to the handicapped* Conservation rather than preservation should be planning emphasis* Baker Road should not be in Modern class* Entry Road intersecting NV 488 and leading to Baker Creek would disrupt natural movement of wildlife; would disturb nesting habitat for many bird species* Natural resources come first, recreation should come next to last* Snowmobiling allowed on roads only* Need signs designating trail to Arch from highway* Keep Great Basin wild -- I feel it is time that the | <p>American public learns to enjoy nature more on its terms rather than demanding nature to conform to mans desired comfort level so no RVs please; Great Basin is a gem: a small glimpse into the past that hasn't been trampled by the hand of man. I believe we should make every effort to preserve it as a testament to the old American West.</p> <ul style="list-style-type: none">* Did not enjoy cattle in campgrounds* A cave management program should be developed for Lehman Caves before the park is developed.* Any housing expansion must be given serious consideration since the area is unstable geologically.* The Petroglyph trail should be removed; it is offensive and greatly detracts from the relative value of the resource* I believe that if people were required to hike more often to their destination rather than drive they would have more respect for themselves and thus a | <p>greater respect and sensitivity for these surroundings. While not everyone can hike, I still believe more people would if they didn't have a choice.</p> <ul style="list-style-type: none">* I would like more access for more people, especially 2-wheel drive vehicles* Develop more short (less than 2 miles) trails from campgrounds or roads* Provide showers and laundry* Provide better trails map* Hold construction of roads and buildings to a minimum, use all available funds to increase activities such as skiing, hiking, horseback riding, etc. Give top priority to making Great Basin a year round tourist attraction* Establish rustic cabins (motel type area) for non-campers in Upper and Lower Lehman area |
|--|--|---|

- * Establish rustic cabins (motel type area) for non-campers in Upper and Lower Lehman area
- * No cows within the park boundary
- * The park should have potable water
- * Get some Basin Ecosystem for Great Basin National Park, even if not contiguous with existing park
- * Encourage some development of lodging and dining facilities in Baker
- * Establish evening interpretive programs May - September
- * We are retired and on a fixed income; we need graded roads and a decent campground to visit national parks.
- * Include the Osceola Arch, cave, tunnel, and ghost town; include Mt. Moriah, BLM archeological sites, all of Big Spring, all of Spring Valley within the park boundary
- * Should not use Forest Service Zoning system
- * Should have an alternative that eliminates grazing - the only national park legislated to allow grazing in perpetuity should be reason enough for the NPS to take a strong stand to oppose this activity. The efforts of our senators for a few ranchers has compromised a basic ingredient of protection of a National Park. To accept grazing without an argument of its consequences is evidence that the NPS no longer stands up for its principles!
- * Extensive development proposed by some of these alternatives would be a mistake whenever the day comes that Great Basin includes lands that should be part of the park.
- * Leave the park as it is, I would like it to be in the forefront of a movement that retains the natural beauty of the park as opposed to the circus atmosphere that has ruined so many other parks.
- * A new visitor center and new entrance road are unwarranted. The existing road and existing Lehman Caves Visitor Center is quite adequate. Use development money in other parks with higher needs; stop empire building
- * It would appear that development alternatives should not be considered at present. There has not been enough time to learn about hydrology, history, caves and other resources to make sure that these are protected and not destroyed by the NPS.
- * In general the park should be managed as at present. Only limited development should take place as the need arises.
- * I strongly recommend that a road be constructed to the Wheeler Peak Bristlecone Pine area and an improved path installed so more people can enjoy the unusualness of the Bristlecones. The park's two most important resource (the cave and bristlecones) should be easily accessible.
- * Please separate RVs from tent campers and make all changes slowly.
- * Provide handicapped sites and facilities
- * Dogs on leash only, please
- * While planning the park, think with perspective of how many overdeveloped parks NPS already has. What we need is more nature and less progress. Please do not go on a building spree, paving over paradise to put up parking lots.
- * Expand facilities in the area of the park that already has development.
- * The park needs land from the Basin itself. I believe the campsites should be left limited. Lodging, food, groceries, showers, etc. can be provided by the local community such as Baker. Expansion of those services in the park will destroy it.
- * Establish a cave management protection plan; the current proposal to build at Baker Ridge could disrupt several delicate caves immediately adjacent.
- * The quality and quantity of caves in this area is phenomenal but the NPS does not seem to know they exist.
- * Help keep the ecological systems intact
- * No generators and music in campgrounds
- * One of the park alternatives I read referred to grazing as "part of the park's ecosystem" and I find this cavalier and offensive
- * I would place as much emphasis as possible on preserving the view sheds east of the park boundary and on keeping the Mt. Washington area as primitive as possible.

- * Keep development to a minimum; ban livestock grazing; close 50% of the park's primitive roads
- * A cultural resource study should be done immediately with the idea of preserving the important historical areas within the park
- * I feel it is important to maintain grazing as is because it is so much part of the present ecosystem.
- * If its not broken don't fix it
- * Please no full service campgrounds!
- * Reintroduce elk and other native species; restrict grazing; why should a natural park, a property commonly owned by all americans, be run in such a way as to provide financial benefits for a few ranchers. I find it hard to believe that in a country where people may be forcibly removed from their homes to allow construction of another highway that the federal government wasn't able to take the grazing rights away from some ranchers.
- * Your concession to local grazing people will cause present and future problems. I hope it will be finally eliminated.
- * Catch and release fishing with forceful instructions can give you excellent results, if you have the guts to enforce.
- * Leave wild caves open
- * Cattle should not be allowed in any campgrounds or on major roads
- * With a new visitor center built, emphasis on Lehman Caves should be reduced and trips only with numbers not exceeding 20 persons should be allowed on cave tours for the protection of the cave environment
- * It would be nice to see some more trails put into the park as well as trail improvement but the trail development itself should be set at a minimum; simple natural bridges, important erosion work is O.K. but leave as much of the backcountry experience as possible.
- * Let BLM and USFS provide 4-wheel drive areas
- * Rustic spread out campsites will give campers the feeling of wilderness
- * Leave sport activities like hang gliding, snowmobiling and cross country skiing to BLM and USFS
- * Keep dogs out of the park
- * NPS business is plants and wildlife not game and fish management
- * Restrict grazing
- * You really missed the boat in not getting Mt. Moriah included in the park.
- * Increase existing Wheeler Peak campgrounds; provide amphitheater at Wheeler Peak campgrounds; provide camping facilities for large groups (like scouts) at Wheeler Peak.
- * Reintroduce native cutthroat trout wherever feasible and destroy all German Brown trout
- * I favor a non-development policy in the park. The ranchers should be compensated for their loss of grazing and permanently prohibited from grazing their herds.
- * Do not remove or destroy any existing facilities unless there is sufficient need to justify the cost.
- * All 2wd roads should provide for low clearance
- * Expand existing campgrounds as needed but no new 2000 site campground
- * Animals (dogs, etc.) should be allowed only in modern areas.
- * Do not tear out existing roads or buildings
- * Use money for resources protection and not new facilities.
- * Vehicle access on Mt. Washington should be prohibited.
- * If you make Wheeler Peak campground inaccessible to us (22 foot motor home) we will lose all interest in Great Basin National Park;
- * The park will not become a major national park so don't over develop it. A new visitor center is not needed, nor is a shuttle nor a new entrance road.
- * The existing Wheeler Peak campground is superb and should be left alone.
- * Riparian habitat is the most limited, but most important to wildlife in the Great Basin ecotype.

Increased development or public use in these areas will negatively impact wildlife resources

- * I believe that bicycles have a place in our parks as they are noiseless and non-polluting. At least bicycle lanes should be provided along all roadways
- * Please phase out grazing; this can be done by prescribing limitations, conditions and regulations that eliminate economic incentives to grazing on the park. It is really a terrible contradiction to establish three ROS zone classes that provide only limited access yet allow grazing.
- * All forms of livestock should be eliminated within the park
- * I would like to ride horses in the park but would like to have sensitive areas marked so as not to damage the resource.
- * I do not want to see mining or drilling in the park.
- * A park should be a healthy ecosystem and not a park designed for human comfort.
- * Actively work toward elimination of all livestock from the park by departmental and legislative means. Eliminate all grazing leases with the current generation of lease holders. This park should cater to all Americans not a select few ranchers.
- * No additional access to backcountry should be constructed. This is a very small park and additional auto access would spoil the primitive nature of the park. Existing conditions allow reasonable access and preserve an out-of-the way character.

- * The existing visitor center is quite sufficient and offers as much if not more information as modern centers in Yellowstone. All administration and housing should be moved to Baker.
- * Park size needs to be increased.
- * Snowmobiles have no place in the park.
- * Plenty of cows in Nevada not enough elk, big horns, etc.
- * Please include wilderness in the plan.
- * I favor more access to areas in the park by vehicle, consistent with preserving the beauty of the parks.
- * Americans can see domestic livestock all over the State of Nevada, it would be nice if the park would provide an opportunity to see native species.
- * I would like a place in the park to purchase fresh milk and groceries.
- * No grazing of domestic livestock within the park boundaries.
- * Mountain bicycles should be allowed on all trails that horses are. There should be mostly hiker only trails but have some horse, bike and hiker trails.
- * I think it could be interesting if a portion of the lowland desert environments surrounding Wheeler Peak could be added to the park.
- * Do not allow private or commercial companies or individuals to lease or operate campgrounds within

the park

- * Actively seek designation as Wilderness Area for all primitive lands proposed in Alternative A.
- * Actively try to acquire Mt. Moriah area as part of the National Park.
- * Allow no domestic livestock or mining in the National Park
- * Silence is one of the wonderful characteristics of wilderness, please take this opportunity to ensure that this national park can offer what is rapidly vanishing: undeveloped, protected land, kept as pristine as possible, it is a treasure.
- * We are not against making more park areas accessible but let's not make it more difficult for these people to choose what to do for an hour or two. Lets not confuse them with too many choices. Do not build roads to the tops of mountains. Do not provide access to everything. Build a visitor center with a film and gift shop for most of the visitors and leave the remainder of the park to those who want to explore nature on its own terms.
- * Expand publication / print / video / clothing sales area.
- * I wouldn't favor a shuttle system until traffic becomes horrid.
- * I believe the candlelight tours should be available for reservation 1 day in advance.
- * Don't let non-campers cruise through the

campground at night.

- * Don't change the park with the exception of improving some trails and some campsites; do not over develop since you are too far away for a big draw; would much rather the USFS manage this land; this park was a political blunder to make a few politicians look good; don't like rangers with firearms and all the people you seem to need; can't feel that I can go there with all the NPS people for fear of doing something wrong; it's now a church with strange people, no longer fit for those who like to sit on Wheeler Peak and feel close to God and feel the winds of real freedom; I don't go to the park anymore.
- * Federal land is suppose to be for everyone but you don't allow hunting or trapping. The park doesn't seem to have a plan for managing game.
- * I would like to see as much development of roads (2wd) and various types of campsites and picnic areas as possible in existing developed areas; keep commercial facilities and concessionaires outside the park. Preserve all undeveloped area as much as possible; restrict grazing gradually; stock streams near roads and developed campsites with non-native fish.
- * Do not build a new entrance road and use the extra money to buy out grazing AUMS.
- * I am appalled that the Park Service would even consider Alternative D for issues 33-35, namely the extermination of native elk, deer and predators for the benefit of non-native livestock. The purpose of the NPS is to protect and preserve our public lands

in their natural state for present and future generations.

- * Don't build another visitor center, the center at Lehman Cave is sufficient for a park of this size; modify or enlarge existing facility.
- * Move as much development as possible to the town of Baker; horses should not be allowed on any trails; allow catch and release of cutthroat trout only.
- * The focus of this effort should be changing the mandate under which the park was set up and eliminate the grazing of domestic livestock. The contention that domestic grazing is part of the Great Basin scene and so should be allowed to be part of the park is a poor conclusion.
- * Hang gliding and snowmobiling have many outlets outside of a National Park and do not need to have provisions made for them inside the park.
- * I am opposed to the policy of allowing domestic grazing within the park. It is destructive to both the fauna and flora the National Parks were created to save.
- * Please delay the new visitor center until visitors numbers warrant the effort
- * Do not develop the Mt. Washington area
- * Two wheel drive dirt roads will allow access to primitive areas by serious conservation minded people.
- * The drive to Wheeler Peak is too good to lose

- * Save the Park; if people want roads and parking lots, go to other national parks
- * Grazing of domestic livestock should be eliminated from the park; grazing also creates a health hazard around campsites.
- * History reminds us that those who have tried to be all things to all people have generally failed regardless of nobility of intent; we feel certain activities can never be conducted in harmony with a natural area, specifically recreational operation of 4 wheel drive or all terrain vehicles, snowmobiling and grazing. These are destructive activities and have no place in a national park.
- * We hope the cost of a new visitor center cannot be justified.
- * Need campsites for RVs; existing ones are too small for RVs.
- * I believe the NPS should open up areas to the public, provide the most possible recreation opportunities consistent with needs to provide the least disruption; however I oppose hang gliding and snowmobiling; I would like to see easier access to scenic areas for hiking, camping and fishing.
- * Do not build any new visitor center anywhere. Remove present concession out of park and use this space.
- * Develop a series of high mountain camps similar to Yosemite's high sierra's camps.
- * Was the cost of this brochure necessary? NO!

- * Prohibit all grazing. Domestic livestock have no place in NPS.
- * It is apparent that the NPS will be unable to meet its mandate of preserving the Great Basin scene if livestock grazing continues ... NPS should encourage and seek legislation to phase out grazing.
- * The backcountry trail system should maximize scenic diversity and use loop routes to disperse use and encourage exploration.
- * The National Park Service should encourage, assist, and facilitate independent baseline scientific studies of natural resources in the park by non-National Park Service individuals and groups. These studies should be scientific, periodic, and public in nature. The resulting data can then be used by both the National Park Service and interested citizens and groups to assess policy as it affects resource management. The primary objective of such research should be to enhance the presence of native species and resources. In actual planning and implementation of plans, priority should be given to native species, even if this may restrict the "freedom" of non-native species such as cattle and sheep. The results of such scientific research can also be useful in the future if and when discussions concerning wilderness designations within the park are pursued.
- * There are at least two ways to further enhance the character and ecosystem of Great Basin National Park. The first would be to add, where feasible, more land to encompass in the park the typical topography of the Great Basin region. It would be my hope that in the long run "basin" as well as "range" could be a part of the park. The addition

suggested in A and D under #38 make a beginning in at least protecting the "range" section, especially the bighorn sheep area. The second way would be to work with the National Forest Service to develop plans for designating adjacent portions of the Humboldt National Forest as wilderness thus providing a buffer zone. This would assist in working through some of the practical problems of species movement in and out of the park boundaries. National parks in California have successfully pursued this tactic.

- * Though ranching is no doubt an important part of the livelihood of the residents of the area, I would like to see some restrictions placed on cattle grazing so that a National Park can return to a Natural Park.
- * I suggest that you undertake an internal NPS study to see if this unit can ever become an "intelligent" representation of the Great Basin. Explore if the present Great Basin National Park should be renamed - Wheeler Peak/Lehman Caves National Monument - Bristlecone National Monument - Nevada National Park or even Rancher's National Park. Then I suggest that you initiate another study to find a more appropriate site for the Nation's Great Basin National Park. Maybe the present area can be rescued by a massive park enlargement. At a minimum you should recommend for the immediate expansion to include all the National Forest Service unit from which the park has been formed. Eventually the park should be expanded to 1 million acres so as to capture the Great Basin topography. If not here try areas in western Utah. Presently this park is almost a joke as a National Park, which verges on a national disgrace on the quality of the National Park Service.

- * A very small national park with continued grazing by legislation and no water rights has three strikes against it to start. Development had best be exceedingly limited until park supporters can effect modification of size, have fewer cattle and more water.
- * Need adequate camping facilities ranging from full service to backcountry. Concessions should be available in Baker, or near the park entrance or at Lehman Caves. You need to have trails of all lengths and ability levels. Allowing skiing, hang gliding, snow mobiles is O.K. as long as they don't dominate the park; I'd rather see an elk or an eagle on a hike rather than a hereford.
- * I would like to see the park enjoyed for its pristine beauty.
- * I would like to ride my mountain bicycle to Snake Creek, Lexington Arch and Mt. Washington. We will see when we return to Nevada just what the park designation means in terms of asphalt, concrete and cinderblock improvements.
- * There seems to be some tippy-toeing as far as cattle grazing within the park. I would like to see no grazing in the national parks. The cattle should at least be eliminated from campground areas, using appropriate fencing and cattle guards. Campgrounds full of fresh "cow paddies" attract flies and drives parents crazy trying to keep their children's feet out of them.
- * I strongly protest restricted travel (the shuttle) to Wheeler Peak.

- * Designate a cyclists only section in both Wheeler Peak and lower Lehman campgrounds. Consider providing one fire ring, two tables and two cooking grills in each cyclists only section.
- * Further development of the park would destroy the beauty that is there now.
- * Do not trade resource protection for visitor exploitation.
- * Retain as much primitive area as possible.
- * Recommend Mt. Washington and other suitable areas for wilderness.
- * Our RV was dirtier after a short visit to the park in June than in the rest of our 6000 mile trip. Please pave major roads and camp areas. You have so much land that more should be developed.
- * My stay at the park was a very enjoyable experience, please add more trails to the trails system.
- * The cows are obvious destructive element especially hiking into Baker Lake.
- * Grazing should be phased out in a few years; please establish backcountry campgrounds.
- * If a way to diaper the cattle were found, it would improve the esthetics appearance of the park and keep your shoes clean.
- * Presently there are only about 12 campsites in Great Basin National Park that can accommodate RVs; more sites should be leveled and enlarged for RVs.
- * Dogs should be allowed in parks; in areas where there are lots of people, the dogs should be on a leash; dogs do not damage the area any more than people.
- * Do your best to conserve all of the park's natural beauty, but adding, as you can carefully planned expansion.
- * Although I know local pressure from ranchers must be great, a national park can only allow grazing as a low priority, preservation of plant and animal wildlife must come first, as well convenience of access to park visitors must be secondary to the natural habitat.
- * Need more camping within the park and recommend that an RV park be developed nearby but outside the park.
- * We loved the park; try to prohibit the cattlemen from setting the tone for our park. Just because they used the area for years does not give them this right forever.
- * Don't build a new visitor center; provide adequate camping; if a clear problem arises, restrict grazing until problem is taken care of.
- * While limited access must be made it should be on a minimal impact basis only. Use of the park by private concerns should be eliminated (grazing) as soon as possible. Wilderness designation should be sought for the peak, the arch and other delicate areas of the park.
- * Only people camping in Wheeler Peak campground should be allowed to drive beyond the trailhead
- parking lot. No trailers or RVs should be permitted in that campground.
- * Discourage collecting of firewood in full and limited service campgrounds by selling bundle wood. Minimize size of fire pits to discourage practice of building bonfires; prohibit all wood fires in backcountry campsites.
- * I feel development within the park should be left about what it is now. To me, an increase in the quality of material things (roads, etc.) eventually decreases the quality of the experience
- * At the present time a new visitor center is not needed, especially with all the money being spent to renovate the old one; do not spoil a beautiful place like Kious Basin with a visitor center; if necessary move administration to Baker and maintenance to the gravel pit. If a new visitor center is absolutely needed put it on Baker Ridge.
- * The rumor is that many wild caves will be gated and access restricted. This does not seem practical and an environmental impact statement should be done prior to closure of wild caves.
- * Don't try to do too much for all people; keep it a get away park since you must have wanted to go there because it is out-of-the-way. Separate 4 wheel drive type campsites form RVs; use the existing visitor center with a few changes and don't spend money on a new visitor center; don't make this park like the other big parks (Zion, Brice, Yellowstone) where you can't get away from people.
- * Eliminate grazing; most of the park should be

in the park; the existing visitor center is too small; no mining or hunting should occur in the park; the federal government should own all the water rights.

- * Eliminate livestock grazing above 8000' level to protect alpine & subalpine habitats: begin a large scale long term enclosure experiment to assess impact of livestock grazing on all park habitats: eliminate livestock grazing around Mt. Washington; remember the objective of preserving a sample of the Great Basin natural ecosystem; this objective must take precedence over grazing in those areas where park studies show grazing to be detrimental to the natural resources.
- * The only additional intrusions on the park should be to protect and re-establish natural values. Grazing is an outrage, financed by urban taxpayers through direct & indirect subsidies. Put park associated facilities in Baker, such as a campground & parking lot. Let the campground be operated privately. Provide free & low cost shuttle service to the park. Let the impacts of visitors be moved to Baker & this encourage a shift of the local economy from grazing to tourism.
- * Major assets of the park: it offers more a sense of history and solitude than being overwhelmed at some natural wonder; it is a symbol that the country is still committed to preservation even in difficult times; it provides a variety of experiences, a genuine oasis.
- * Plan for changes in the law that will phase out livestock grazing
- * Please keep a national park wilderness a wilderness

that is free of development & habituated with its natural species

- * Please remember that you are creating something for the future generations as well as for the population you see now. When I think of a National Park, I envision solitude, peace, quiet and the splendor of wilderness.
- * We would be in favor of having a permit system for visiting the NPS. Allow only so many visitors & once that number is reached allow no more; set limit for each park at a certain number depending upon how much usage the park could withstand so as to manage in an unaltered state.
- * Cave tours cannot presently accommodate as many visitors as can park in parking lot. More parking facilities will create more visitors to wait longer for tours.
- * Please change as little as possible
- * We have been visiting Great Basin National Park for over 25 years. I hope it doesn't get overdeveloped & spoiled like other national parks.
- * Keep primitive; use existing facility to save money; place administration outside the park; retain Wheeler Peak Campground
- * The NPS should favor wild creatures over livestock
- * Do not build new roads across fragile lands; keep existing entrance road. Work with park neighbors to limit commercial development to Baker townsite. Develop contact area for visitors in Baker. Integrate

water & sewage plan for town with new visitor center. Use present visitor center for interpretive displays & offices. Use new center for administration and maintenance. Move residences to Baker. Reconsider all these expensive plans which would disturb existing natural resources. Developing Baker area will discourage development along Highway 488 & keep the park entrance simple.

- * Please maintain the beauty & isolation
- * Snowmobiling & trail biking should not be allowed
- * Although our dog would enjoy hiking with us, we realize that dogs pollute the trails & intimidate wildlife
- * The park's attractions cannot be enjoyed in one day, but for those not equipped to camp the commute to Ely is too long. Can the park service encourage/underwrite the development of tourist facilities in Baker?
- * Develop picnic sites along Baker Creek; provide tent only spaces & all campgrounds to tenters will not be taking camping spaces built to accommodate RVs.
- * Trail work is needed on top third of Wheeler Peak trail.
- * Great Basin is supposed to preserve a representative segment of the Great Basin physiographic province. At present the park does not include low lying areas. We feel that such lands should be acquired, either as a separate unit or adjoining the existing national park. We envision a Great Basin N.P. of which Wheeler Peak unit is only a beginning.

- * Develop in a way which will retain its rural wilderness characteristics while allowing access to a wide range of population; keep motels, full service campgrounds outside of the park; retain Wheeler Peak campground; Baker Creek campground is great as is; develop the park slowly & thoughtfully in gradual stages.

UNITED STATES
DEPARTMENT OF THE INTERIOR
NATIONAL PARK SERVICE
GREAT BASIN PLANNING TEAM
DENVER SERVICE CENTER
P.O. BOX 25287
DENVER, CO 80225-0287

OFFICIAL BUSINESS
PENALTY FOR PRIVATE USE, \$300