

# Wheeler Peak Scenic Area

HUMBOLDT NATIONAL FOREST



# Information



The Forest Service designated 28,000 acres as the Wheeler Peak Scenic Area in 1959. The Scenic Area recognizes the exceptional scenic, botanical, and geological attractions of the range and provides protection for the ancient bristlecone pine forest on Wheeler Peak and Mt. Washington. Wheeler Peak, dominating the scenic Area, rises in elevation to 13,063 feet, making it the highest point wholly within Nevada. Complementing Wheeler Peak are several peaks rising above 11,000 feet elevation.

Lehman Caves National Monument is located adjacent to the Scenic Area. Here the National Park Service protects and maintains one of the largest limestone solution caverns in the western United States. The National Park Service and the Forest Service jointly operate a visitor center at Lehman Caves National Monument where specific information may be obtained from the Forest Service about off-road vehicle use, group reservation sites for picnics, and other points of interest within the Scenic Area.

Information and directions to Mt. Moriah, Lexington Arch, and the Osceola Ditch are also available at the visitor center.

For further information concerning the Wheeler Peak Scenic Area of the Humboldt National Forest, contact the Forest Supervisor, Humboldt National Forest, P.O. Box 1072, Elko, Nevada 89801; the Ely District Ranger, P.O. Box 539, Ely, Nevada 89301; or Baker Ranger Station, Baker, Nevada 89311.

To order visitor maps for the Humboldt National Forest, send your request to:

Humboldt National Forest  
P.O. Box 7  
Baker, Nevada 89311

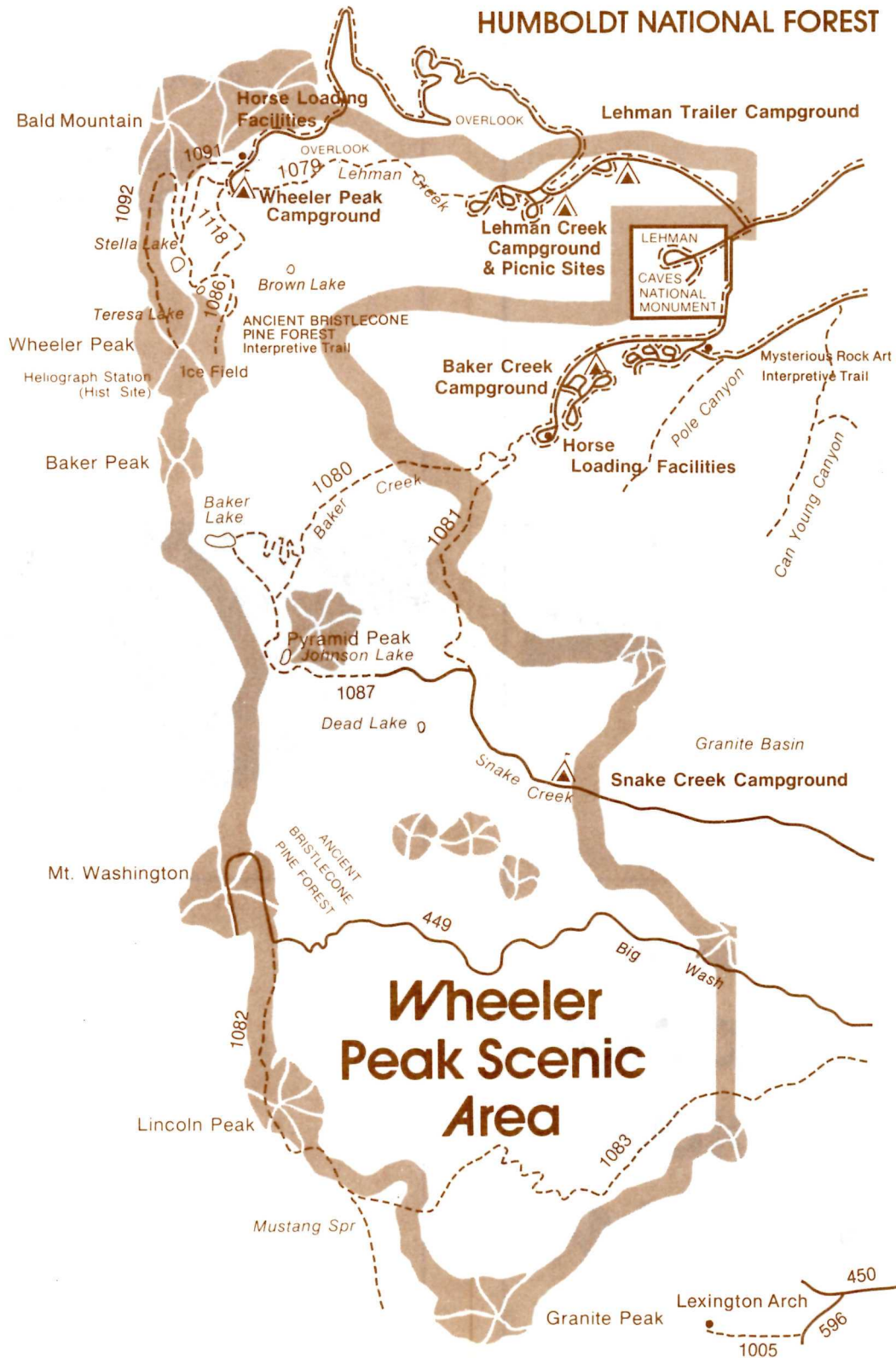
Make checks or money orders payable in advance to Forest Service, USDA.

## **Forest Visitor Map—\$1.00 each**

Humboldt National Forest—White Pine and Ely Division  
Wheeler Peak Scenic Area

Topography maps are not available from the Forest Service. They can be obtained from the U.S. Geological Survey or backpacking stores in your area. The quadrangles of the Scenic Area are: Sacramento Pass, Wheeler Peak, and Garrison.

# HUMBOLDT NATIONAL FOREST



## Caution to Hikers

Wheeler Peak Campground is at 10,000 feet. All hiking being done in the upper reaches of these mountains is at elevations above those normally encountered. People who are not in excellent physical condition should not attempt strenuous activities at these elevations.

### Wheeler Peak National Recreation Trail System

The Wheeler Peak Trail system is comprised of a continuous loop trail and three spur trails known as the Wheeler Peak Summit Trail, Stella Lake Horse Trail, and the Bristlecone-Icefield Trail.

#### Solace Trail 1118

The Solace Loop Trail begins and ends at the Wheeler Peak Campground and forms a three-mile loop. The trail starts in dense forest, passes through aspen stands and alpine meadows as it loops past Stella and Teresa Lakes. The Solace Loop Trail is part of the National Recreation Trail system.

#### Stella Lake Horse Trail 1091

The Stella Lake Horse Trail connects to the Solace Loop Trail below Stella Lake. This trail begins 1/2 mile from the Wheeler Peak Campground, where horse unloading facilities are provided.

#### Wheeler Peak Trail 1092

The Wheeler Peak Summit Trail branches from the Solace Loop Trail below Stella Lake. This

strenuous trail climbs 2,600 feet in four miles to the summit of Wheeler Peak (elevation: 13,063 feet).

### Bristlecone and Icefield Trail 1086

The Bristlecone and Icefield Trail branches from the Solace Loop Trail near Teresa Lake. It winds one mile to the bristlecone pine forest. Along the signed interpretive trail, both ancient and young bristlecone pines can be seen. The trail continues into the chasm-like cirque at the base of Wheeler Peak, where the hiker can view the unusual geological "rock glacier" or icefield.

### Lehman Creek Trail 1079

This trail starts at the upper end of Lehman Campground and extends approximately four miles up the Lehman Creek to the Wheeler Peak Campground at 10,000 feet elevation.

### Baker Creek Trail 1080

This trail starts at approximately one mile above the Baker Creek Campground. It leads seven miles up Baker Creek drainage to Baker Lake, situated at the base of the Baker Cirque, 10,600 feet altitude.

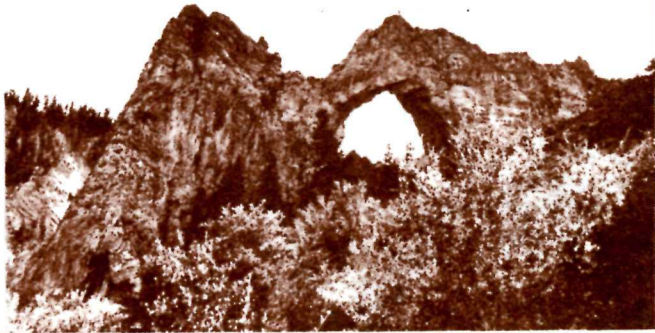
### Lexington Arch

This interesting arch is located near the Scenic Area. It consists of a large limestone arch estimated at six stories high. Access to the arch is gained by following a dirt and gravel road along Lexington Creek, then proceeding on a hiking trail for approximately two miles to the arch.

Name of Recreation Site	General Information			Facilities							Activities and Attractions			
	Elevation	Season of Use	Miles from Baker, Nevada	Camping—fee	Camping—Non-Fee	Group Reservation Picnic Area	Drinking Water	No. of Family Camping Units	Trailers	Handicap Unit	Fishing	Hunting	Stream	Special Features Nearby
Lehman Trailer	7,500	May 16 Oct. 15	7	X			X	11	X		X	X	X	
Lehman Creek	7,800	May 16 Oct. 15	8	X		X	X	24	X	X	X	X	X	Largest Mountain Mahogany in the world.
Wheeler Peak	10,000	July 1 Sept. 15	18	X			X	37	X			X	X	Trail to Stella Lake, Teresa Lake, Wheeler Peak, Bristlecone Pine Forest and Icefield. Horse loading facilities.
Baker Creek	8,000	May 16 Oct. 15	8	X			X	14	X		X	X	X	Trail to Baker Lake. Horse loading facilities.
Snake Creek	7,800	May 16 Sept. 30	16		X			8			X	X	X	

# Wheeler Peak Scenic Area

HUMBOLDT NATIONAL FOREST



U.S. DEPARTMENT OF AGRICULTURE  
FOREST SERVICE

ELKO, NEVADA