

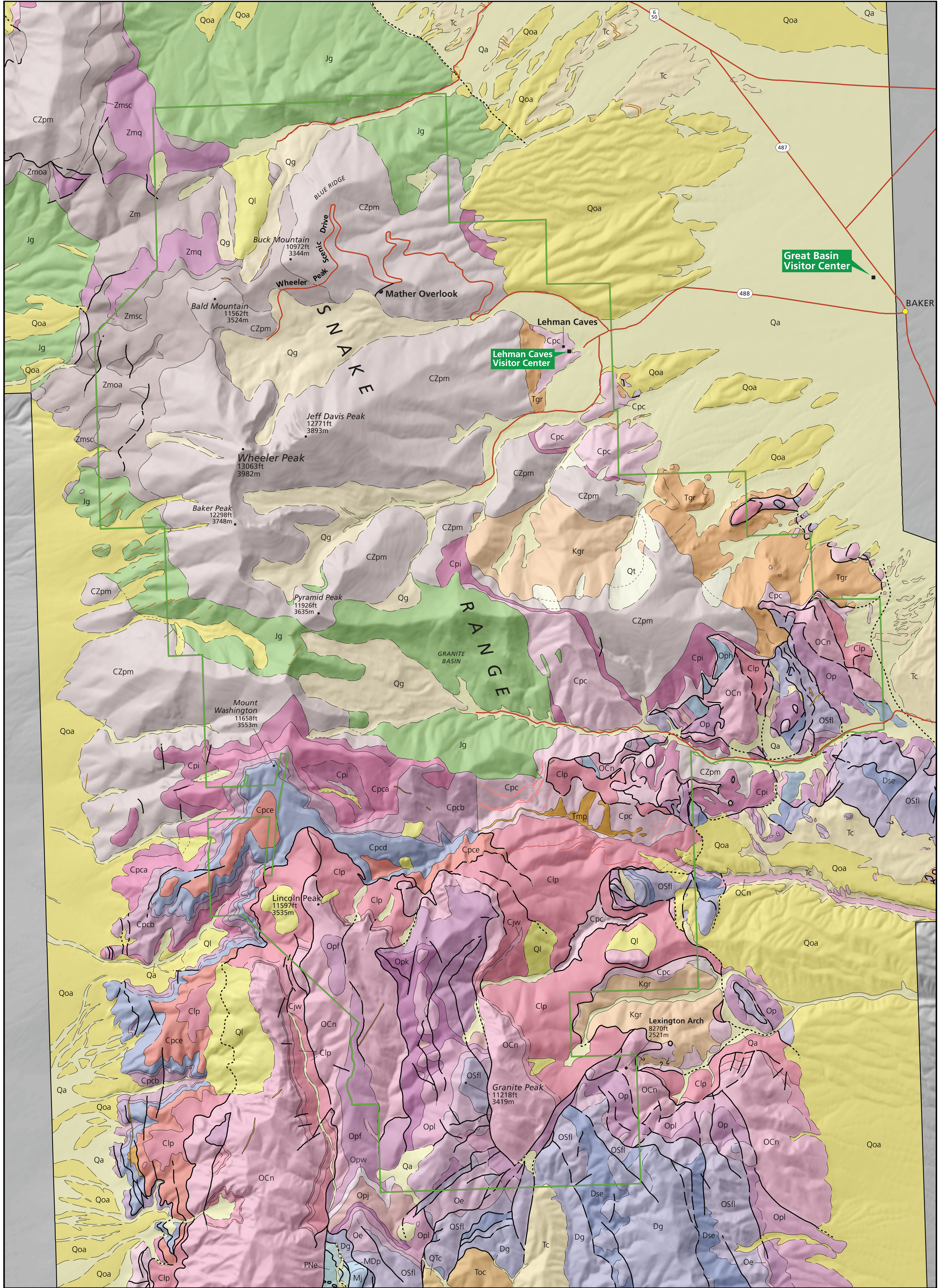
# Geologic Map of Great Basin National Park

Nevada

National Park Service  
U.S. Department of the Interior



Geologic Resources Inventory



**NPS Boundary**

**Infrastructure**

- points of interest
- cities
- roads

**Linear Marker Beds**

- Tcmb - Conglomerate, marker bed, known or certain
- Cljmb - Lincoln Peak Formation, marker bed, known or certain
- Cpcmb - Pole Canyon Limestone, undifferentiated, marker bed, known or certain

**Linear Dikes**

- Tmp - Muscovite-bearing rhyolite porphyry dikes and sills, known or certain

**Faults**

- normal fault or detachment fault/decollement, solid where known, dashed where approximate or inferred, dotted where concealed, and '?' indicates queried

**Geologic Contacts**

- solid where known, dashed where approximate or inferred, dotted where concealed

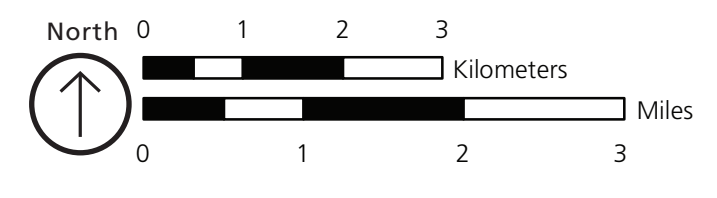
**Geologic Units**

- Qt Talus
- Qa Alluvium
- Qlg Lacustrine gravels
- Ql Landslide deposits
- Qg Glacial deposits
- Qoa Older alluvium
- Qtc Conglomerate
- Tc Conglomerate
- Tnr Needles Range Formation
- Tl Lacustrine deposits
- Tlf Latite flows
- Trdi Rhyodacite flows and subvolcanic intrusive rocks
- Toc Older conglomerate
- Tgr Biotite granite

- Kgr Granite
- Jg Granite
- PNe Ely Limestone
- Mc Chainman Shale
- Mj Joana Limestone
- MDp Pilot Shale
- Dg Guimette Formation
- Ds Simonson Dolomite
- Dse Seyv Dolomite
- OSfl Fish Haven and Laketown Dolomites, undifferentiated
- Oe Eureka Quartzite
- Op Pogonip Group, undifferentiated
- Opk Pogonip Group, Kanosh Shale
- Opj Pogonip Group, Juab Limestone
- Opw Pogonip Group, Wahwah Limestone

- Opfi Pogonip Group, Fillmore Limestone
- Opfh Pogonip Group, House Limestone
- OCn Notch Peak Limestone
- Ccs Corset Spring Shale
- Cjw Johns Wash Limestone
- Clp Lincoln Peak Formation
- Cpc Pole Canyon Limestone, undifferentiated
- Cpce Pole Canyon Limestone, E member
- Cpcd Pole Canyon Limestone, D member
- Cpcc Pole Canyon Limestone, C member
- Cpcb Pole Canyon Limestone, B member
- Cpca Pole Canyon Limestone, A member
- Cpi Pioche Shale
- Czpm Prospect Mountain Quartzite
- Zm McCoy Creek Group, undifferentiated

- Zmoa Osceola Argillite of the McCoy Creek Group
- Zmsc McCoy Creek Group, Shingle Creek Shale
- Zmq McCoy Creek Group, quartzite



This figure is an overview of compiled digital geologic data. It is not a substitute for site-specific investigations.

Minor inaccuracies may exist regarding the location of geologic features relative to other geologic or geographic features on the figure. Based on the source map scale (1:24,000) and U.S. National Map Accuracy Standards, geologic features represented here are within 12 meters / 40 feet (horizontally) of their true location.

This figure was prepared as part of the NPS Geologic Resources Division's Geologic Resources Inventory. The source map used in creation of the digital geologic data product was:

Miller, E.L., and the Stanford Geological Survey, 2007 (mapping 1993-1997). Geologic Map of Great Basin National Park and Environs, Southern Snake Range, Nevada (1:24,000 scale). Stanford Geological Survey.

Digital geologic data and cross sections for Great Basin National Park, and all other digital geologic data prepared as part of the Geologic Resources Inventory, are available online at the NPS Integrated Resource Management Applications Portal (IRMA): <https://irma.nps.gov/App/Reference/Search>. (Enter "GRI" as the search text and select Great Basin National Park from the unit list.)