

Rhodes Cabin  
Lehman Caves National Monument  
White Pine County  
Nevada

HABS No. NEV-17-1

HABS  
NEV  
17-  
1-

PHOTOGRAPHS  
WRITTEN HISTORICAL AND DESCRIPTIVE DATA  
REDUCED COPIES OF MEASURED DRAWINGS

HISTORIC AMERICAN BUILDINGS SURVEY  
NATIONAL PARK SERVICE  
Western Office, Division of Design and Construction  
450 Golden Gate Avenue  
San Francisco, California

PHOTOGRAPH-DATA BOOK REPORT  
HISTORIC AMERICAN BUILDINGS SURVEY

NEV-17-1

Page 1

RHODES CABIN

Lehman Caves National Monument  
White Pine County, Nevada

LOCATION: Eastward from the cave entrance  
OWNER: National Park Service  
OCCUPANT: None  
USE: Formerly Cabin Shelter for Cave Visitors

**HISTORICAL AND ARCHITECTURAL SIGNIFICANCE**

The Rhodes Cabin is the only remaining cabin of several built near the Lehman Cave entrance area. This type of simple log shelter was built by the pioneer homesteaders throughout this section of the West, but they are rapidly disappearing and few remain today.

**HISTORICAL INFORMATION**

The caves were discovered in 1885 by Ab (Absalom) Lehman, a pioneer homesteader of the area; a date, "1898", on the cave walls near the original entrance is the earliest evidence of exploration.

Some consider that Rhodes Cabin and other similar cabins were built by Lehman in the last century, but others believe that the cabins were built by C. T. Rhodes in 1928 to serve as shelters for visitors to the caves.

In 1932 the National Monument was established under the jurisdiction of the Department of Agriculture; in 1933 the area was transferred to the National Park Service. The approach road, parking area and the Visitors Center were constructed in 1962.

## ARCHITECTURAL INFORMATION

The Rhodes Cabin is a one-story, one-room building built of log construction. The outside dimensions are approximately 11'6" x 20'0".

### EXTERIOR

The site on the gravelly slope was levelled, and the base logs were placed directly on the ground. The logs, of white fir and Englemann spruce, are quite variable in size and have considerable taper. At the corners, they are notched and project eight to twelve inches. Joints between the logs were originally chinked with cement mortar, but little remains in place. Logs and dimensioned lumber were never painted or treated. The logs on the ground are somewhat decayed, but other material is quite sound. Window and door bucks are warped excessively in several openings; they are roughly shaped of two inch pine lumber. The sash, without glass, is still in place in one of the windows, but others are missing. One plank door, built of one inch material, is available in the storage yard. Apparently a wood latch was lifted with a chain through a hole in the door.

The low-pitched ridge roof was constructed with two layers of wood planks over which there is a layer of earth fill. There is evidence that the two-inch planks were salvaged from the Osceola Irrigation flume, which was constructed in the late 1880's and later abandoned.

### INTERIOR

The floor is of tamped earth, and the inside walls are the rough, unfinished logs. On the side walls, there are wood timbers supporting a seven inch square beam upon which the log ridge-pole and purlins rest. The rough planking is exposed on the ceiling. Probably little used in winter months, no heating was provided.

NEV  
17-1

NEV-17-1  
Page 3

REFERENCES

Brochure, Lehman Caves National Monument, Nevada, 1962,3  
Department of Interior, National Park Service.

Interview with Robert Jacobsen, Superintendent, Lehman Caves  
National Monument.

Prepared by,

*Melvin M. Rotsch*

Melvin M. Rotsch, Professor  
Texas A&M University

August 1965

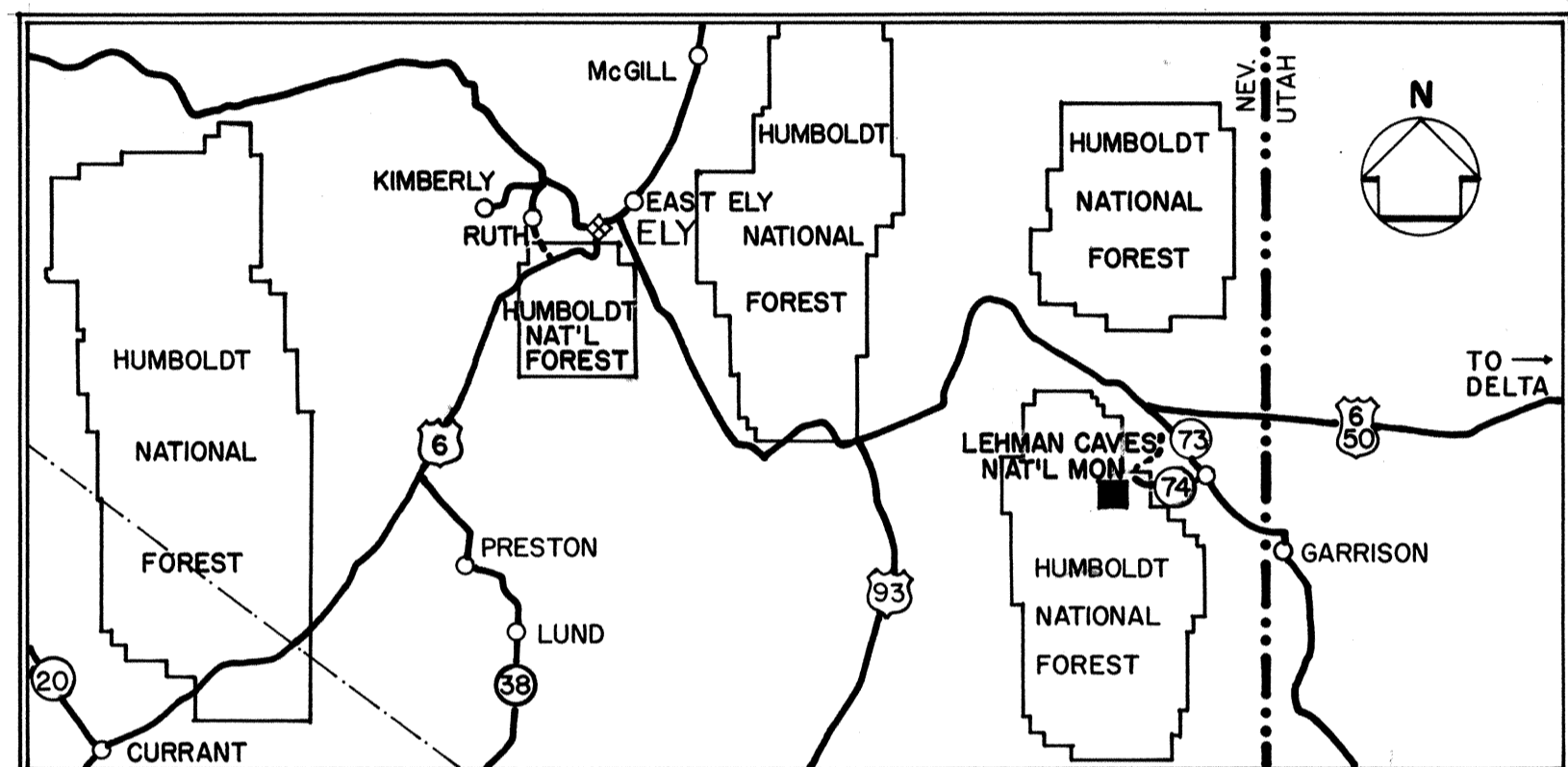
APPROVED: *Charles S. Pope*  
Charles S. Pope, AIA  
Supervising Architect, Historic Structures  
Western Office, Design and Construction  
National Park Service

DATE: August 1965.

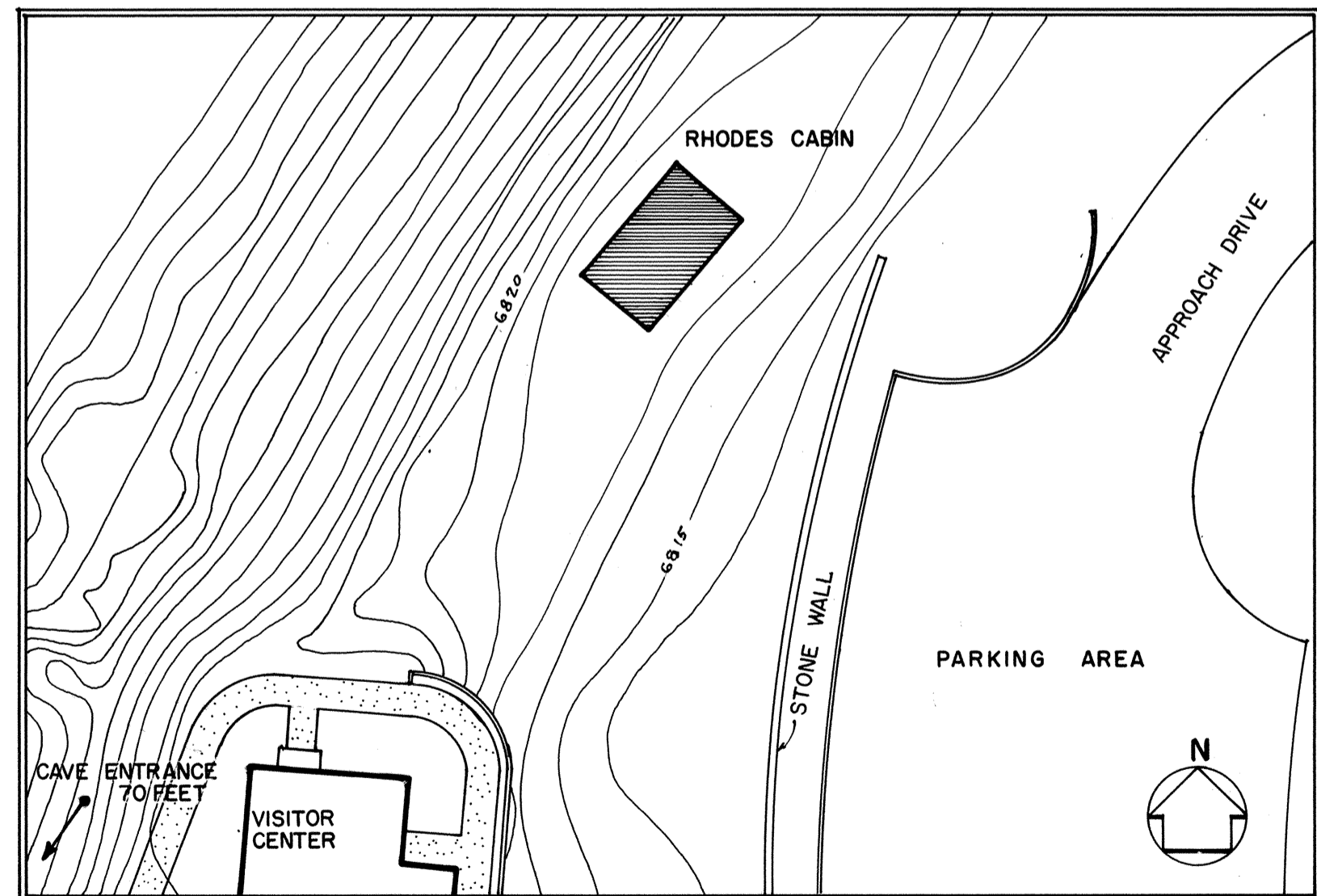
# RHODES CABIN

## LEHMAN CAVES NATIONAL MONUMENT

### WHITE PINE COUNTY, NEV.



LOCATION MAP



SITE PLAN

DRAWN BY: JAMES M. CARPENTER

SCHOOL OF ARCHITECTURE  
TEXAS A&M UNIVERSITY  
UNDER DIRECTION OF THE NATIONAL PARK SERVICE,  
UNITED STATES DEPARTMENT OF THE INTERIOR

NAME AND LOCATION OF STRUCTURE  
**RHODES CABIN**  
LEHMAN CAVES NATIONAL MONUMENT, WHITE PINE COUNTY, NEVADA

SURVEY NO.  
NEV.  
17-1

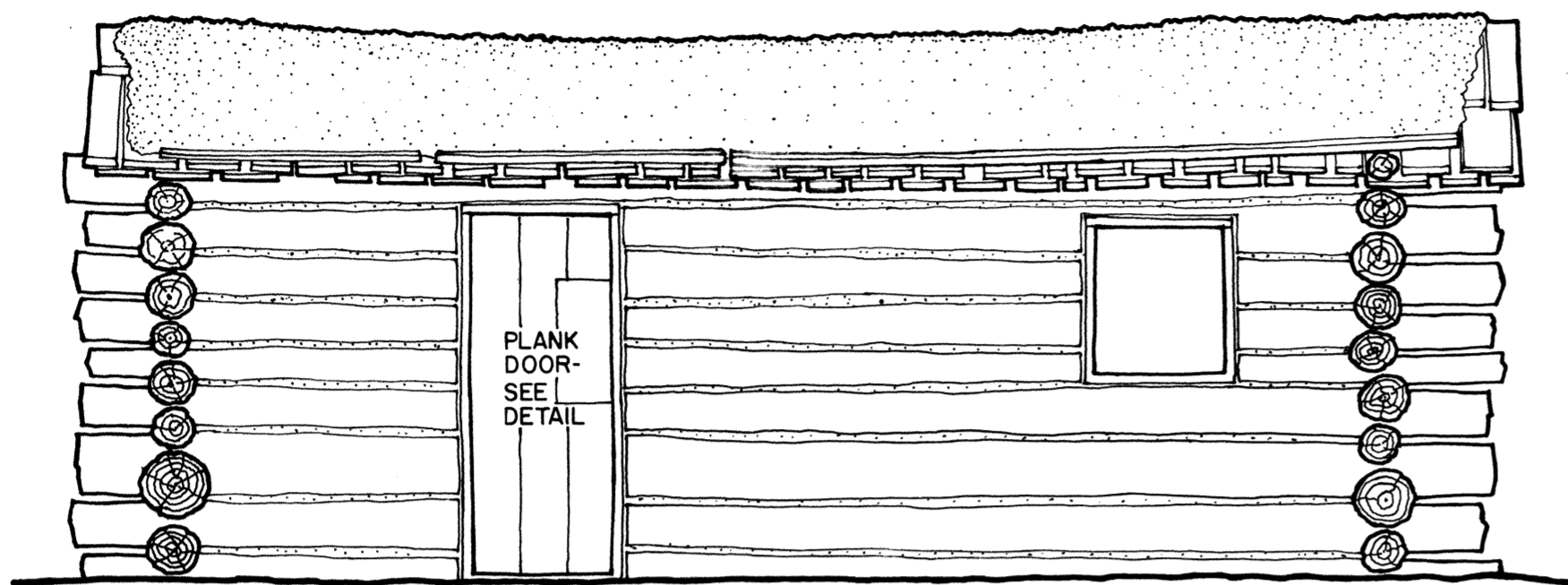
HISTORIC AMERICAN  
BUILDINGS SURVEY  
SHEET 1 OF 2 SHEETS

LIBRARY OF CONGRESS  
INDEX NUMBER

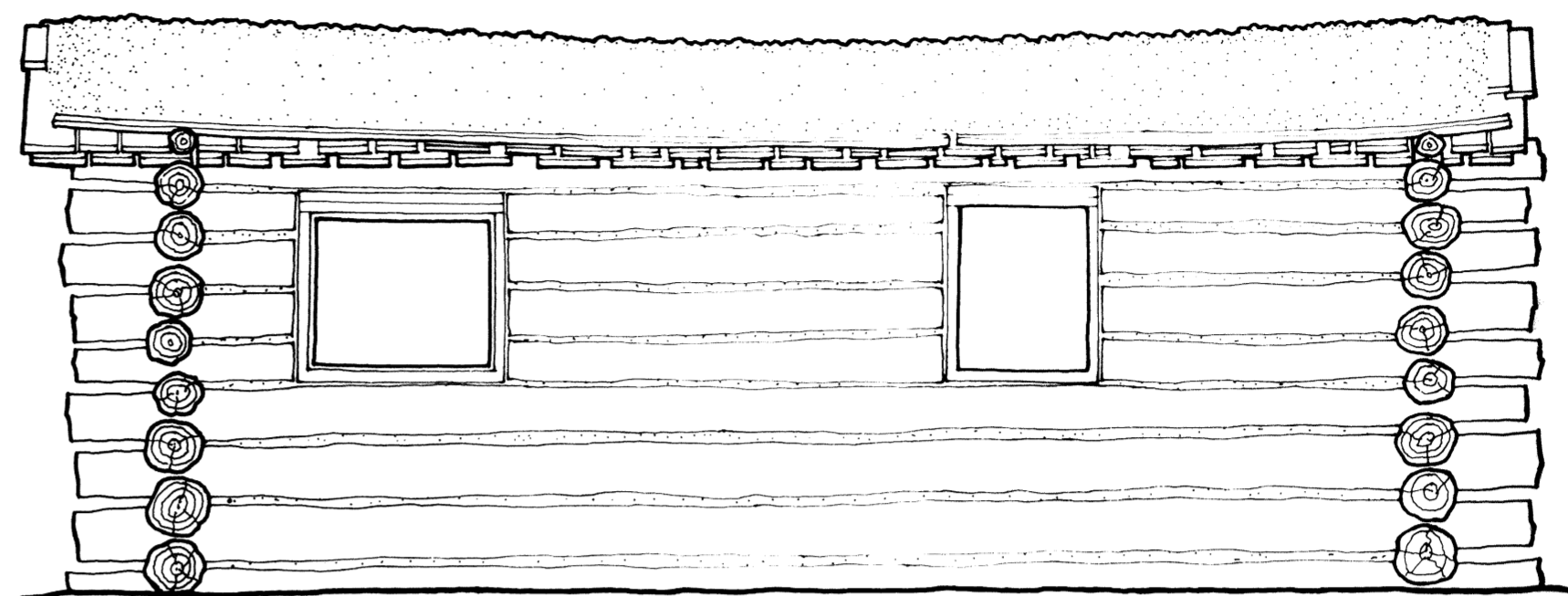
THE CAVES WERE DISCOVERED IN THE LATE 1880'S BY AB LEHMAN. THE NATIONAL MONUMENT WAS ESTABLISHED IN 1922, AND A YEAR LATER CAME UNDER THE JURISDICTION OF THE NATIONAL PARK SERVICE.

CABINS, TO SERVE AS SHELTERS FOR CAVE VISITORS, WERE BUILT BY C.T. RHODES IN 1925 TO 1928. SEVERAL CABINS EXISTED NEAR THE CAVE ENTRANCE, BUT ONLY ONE REMAINS. THIS TYPE OF SIMPLE LOG SHELTER WAS BUILT BY THE PIONEER HOMESTEADERS THROUGHOUT THIS SECTION OF THE WEST.

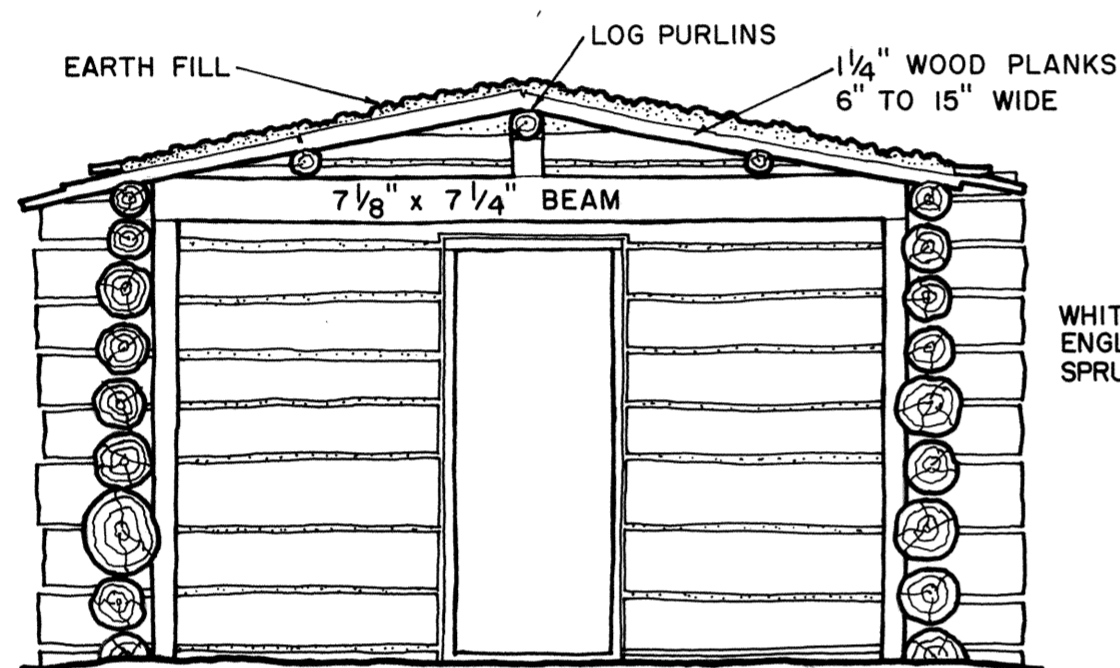
THESE DRAWINGS WERE DEVELOPED AS AN HISTORIC AMERICAN BUILDINGS SURVEY PROJECT OF THE NATIONAL PARK SERVICE, CHARLES S. POPE, SUPERVISING ARCHITECT, HISTORIC STRUCTURES, WODC, AND WAS FINANCED BY FUNDS OF THE MISSION 66 PROGRAM. MEASURED AND DRAWN UNDER THE DIRECTION OF MELVIN M. ROTSCHE, ARCHITECT OF TEXAS A & M UNIVERSITY. DRAWINGS PREPARED BY STUDENT-ARCHITECT JAMES M. CARPENTER, 1965.



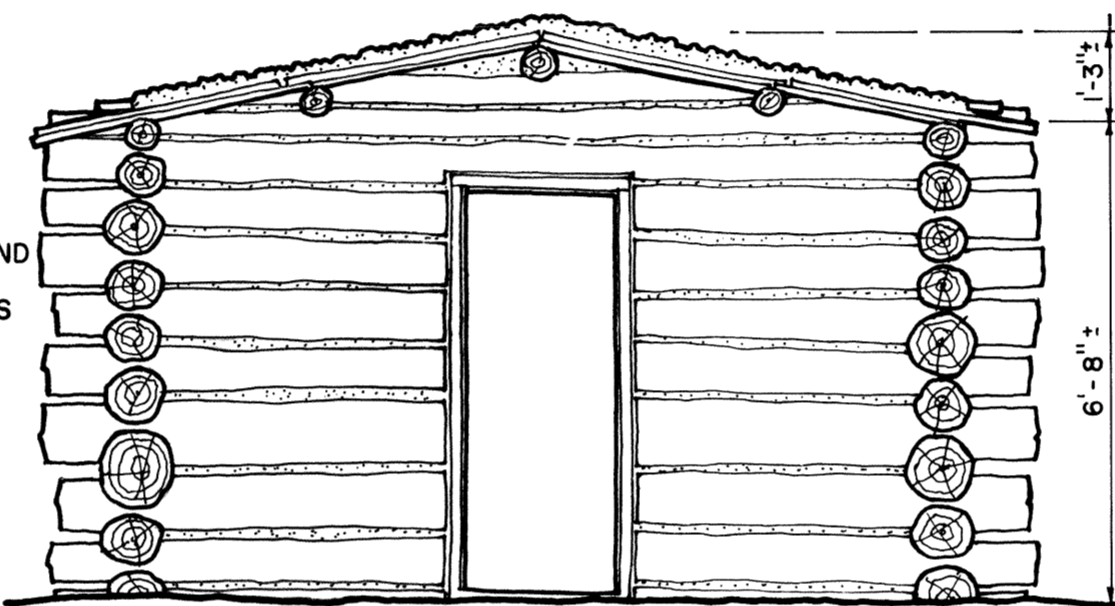
SOUTHEAST ELEVATION



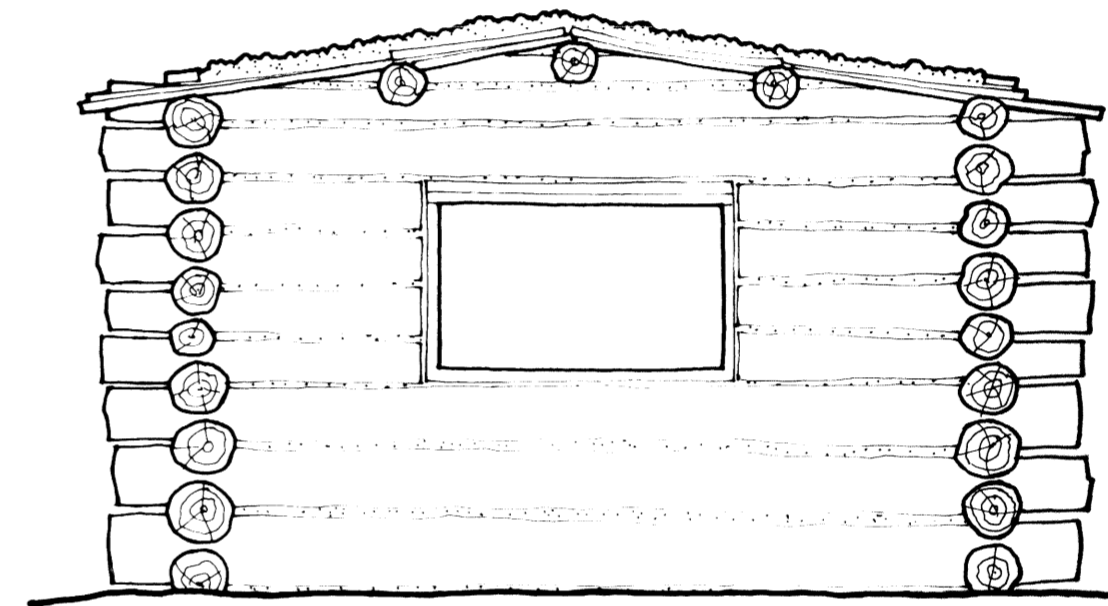
NORTHWEST ELEVATION



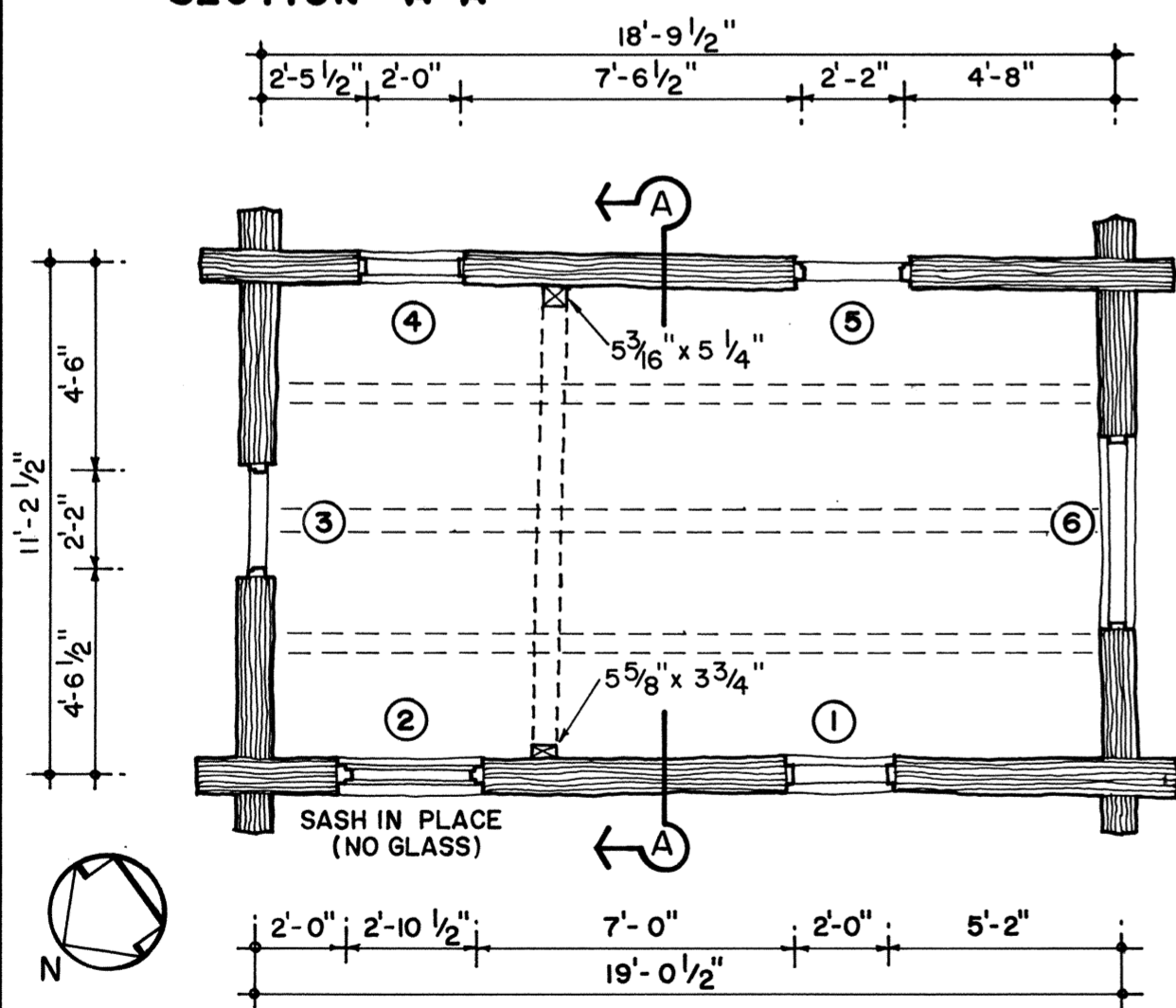
SECTION A-A



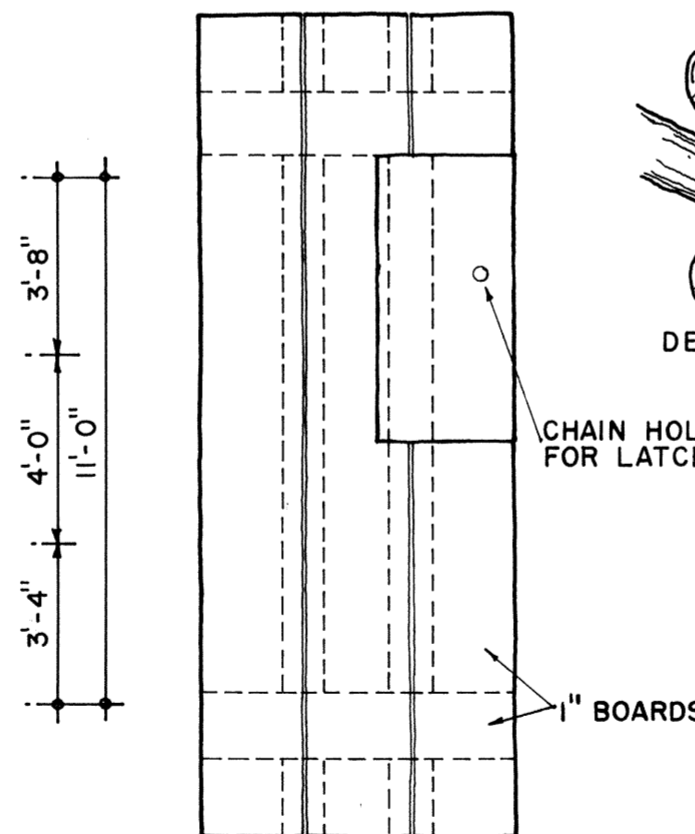
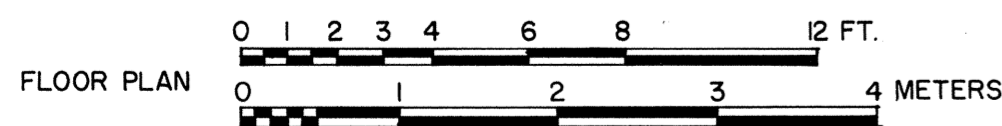
NORTHEAST ELEVATION



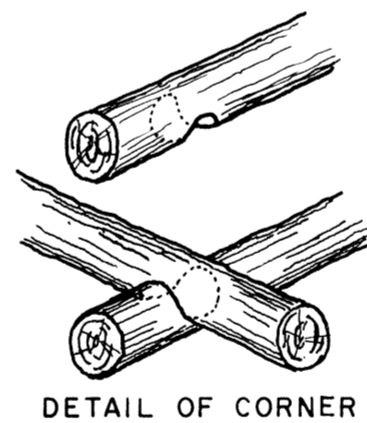
SOUTHWEST ELEVATION



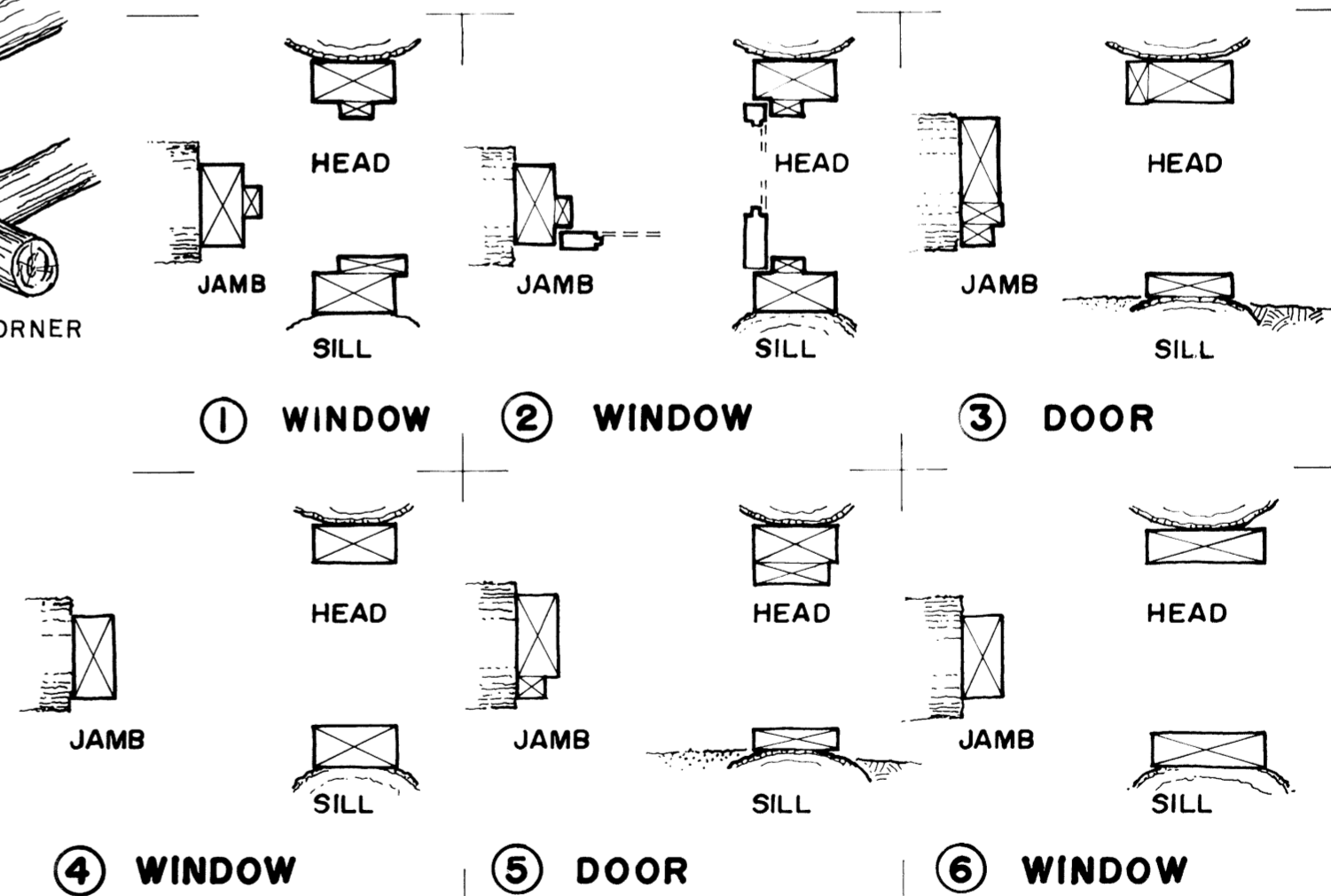
FLOOR PLAN



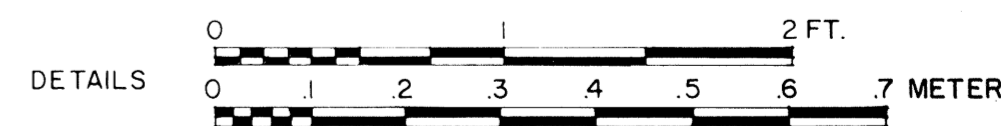
DETAIL OF DOOR  
SCALE 3/4" = 1'-0"



DETAIL OF CORNER



① WINDOW ② WINDOW ③ DOOR  
④ WINDOW ⑤ DOOR ⑥ WINDOW



DRAWN BY: JAMES M. CARPENTER

SCHOOL OF ARCHITECTURE  
TEXAS A&M UNIVERSITY  
UNDER DIRECTION OF THE NATIONAL PARK SERVICE,  
UNITED STATES DEPARTMENT OF THE INTERIOR

NAME AND LOCATION OF STRUCTURE  
**RHODES CABIN**  
LEHMAN CAVES NATIONAL MONUMENT, WHITE PINE COUNTY, NEVADA

SURVEY NO.  
NEV.  
17-1

HISTORIC AMERICAN  
BUILDINGS SURVEY  
SHEET 2 OF 2 SHEETS

LIBRARY OF CONGRESS  
INDEX NUMBER

NEV. 17 - — — 1 -

Nevada

White Pine

Nr. cave entrance

Lehman Caves NM

State

County

Town or Vicinity

2s  
7p  
3d

Rhodes Cabin

(NEV-17-1)

Structure

Library Material: Pages of a Report, 3; Photographs, 7;  
Measured Drawings, 2.

History: Last remaining of several cabins built about 1925 to 1928 by C. T. Rhodes for use as shelters for visitors to the caves. This log cabin is typical of the simple houses built by pioneer homesteaders throughout this area. NO COVER

1 SET REPRODUCIBLES

1 " CRONAR PGS. INK

(over)

Description: One-story, one room cabin of fir and spruce logs, chinked with cement mortar. It has a dirt floor and the low-pitched plank roof is covered with earth fill. Most window sash are missing; one door, of plank construction remains.

References: Brochure - Lehman Caves National Monument, Nevada, Department of Interior, National Park Service, 1962. Interview with Robt. Jacobsen, Supt., Lehman Caves.

Index Card Prepared by: Melvin M. Rotsch, Professor, Texas A&M University, Summer Advisory Architect, HABS, WODC  
August 1965



HRBS No. NEV-17-1





HABS T6. NEV-17-1

22



HRBS No. NEY-17-1

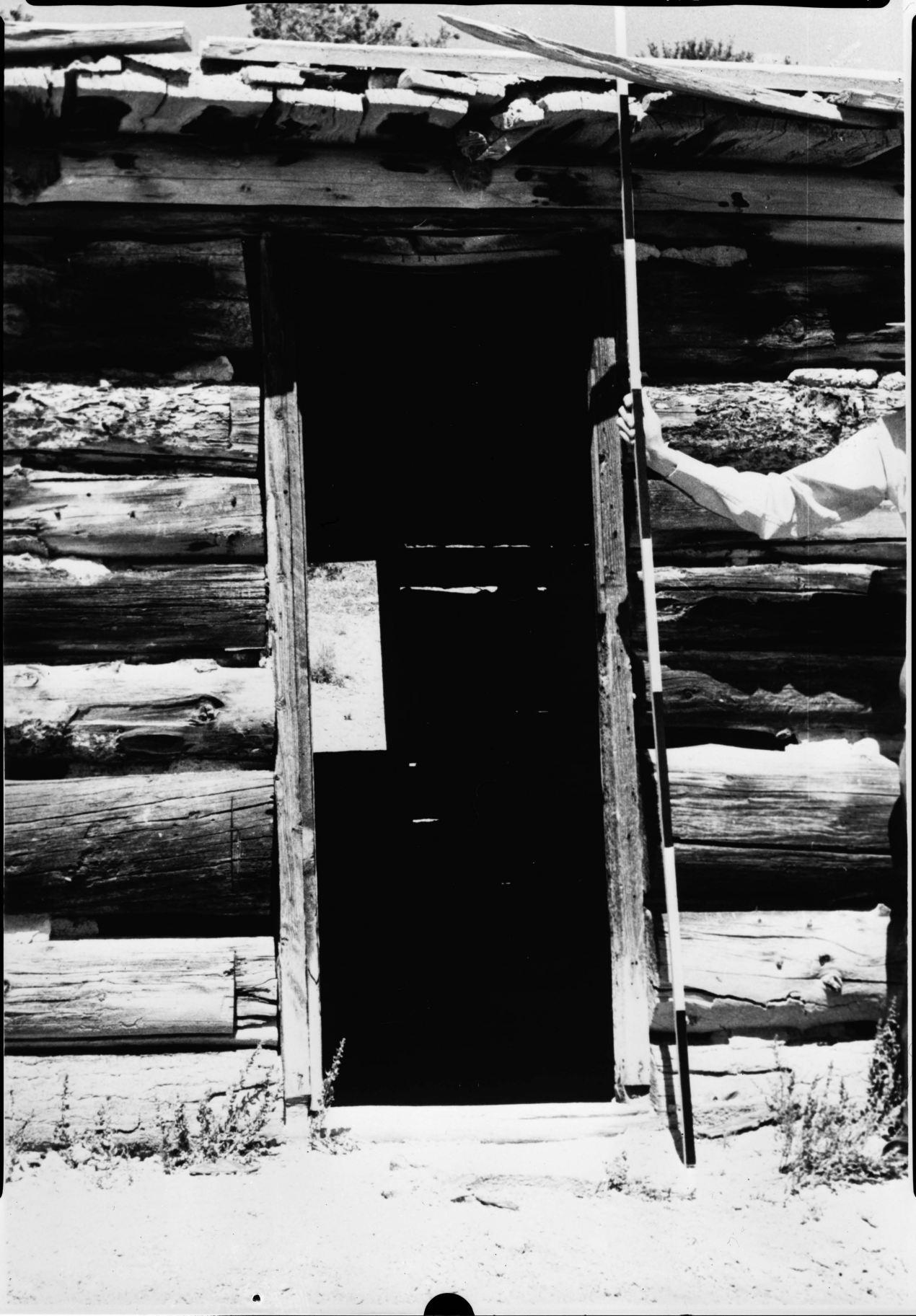


HRBS No. NEV-17-1

HRBS No. NEV-17-1



HRS No. NEV-17-1



HRBS No. NEV-17-1

